



## PRODUCTION AND DELIVERIES OF ENERGY PRODUCTS, JANUARY 2012<sup>1</sup>

Production of solid fuels in January 2012 compared to December 2011 decreases by 14.7% to 2 922 thousand tonnes, liquefied petroleum gases - by 10.0% to 9 thousand tonnes, unleaded motor gasoline - by 10.1% to 116 thousand tonnes, transport diesel - by 12.3% to 135 thousand tonnes and electricity - by 3.0% to 4 643 GWh (Table 1).

Production of solid fuels in January 2012 compared to January 2011 decreases by 4.4%, liquefied petroleum gases - by 10.0%, unleaded motor gasoline - by 14.1%, transport diesel by 9.4% and electricity - by 6.6%.

Deliveries of natural gas in January 2012 compared to December 2011 increase by 13.4% to 407 million standard cubic metres and electricity - by 8.8% to 3 725 GWh. Decrease is reported for the deliveries of solid fuels by 12.7% to 3 258 thousand tonnes, liquefied petroleum gases - by 34.5% to 19 thousand tonnes, unleaded motor gasoline - by 21.7% to 36 thousand tonnes and transport diesel - by 13.9% to 143 thousand tonnes (Table 2).

Deliveries of unleaded motor gasoline in January 2012 compared to January 2011 increase by 2.9%, transport diesel - by 50.5%, natural gas – by 2.0% and electricity - by 2.6%. Decrease is reported for the deliveries of solid fuels by 3.5% and liquefied petroleum gases - by 20.8%.

<sup>1</sup> Preliminary data. Data series can be found on: [www.nsi.bg](http://www.nsi.bg), section Energy/Table data and Graphs/ Latest data.



## METHODOLOGICAL NOTES

The survey on energy products is conducted every month in accordance with the adopted Regulation of the European Parliament and of the Council on energy statistics. The survey aims to submit information on the production and inland deliveries of the main energy products – electricity, solid fuels, natural gas and petroleum products. Respondents of the survey are producers, importers and exporters of energy products. Production and deliveries of the energy products are the main observed indicators.

### Solid fuels

*Production* – Include Hard coal, Lignite and Solid fuels from coal. Producers report quantities, calculated after any operation for removal of inert matter.

*Deliveries* – quantities delivered to the internal market. Equal to the total of the deliveries to the different types of consumers: producers' own use, main activity power stations, coking plants and patent fuel plants, industry, iron and steel industry and others.

### Petroleum products

*Production* – production of finished products at a refinery or blending plant.

*Deliveries* – the observed delivery of finished petroleum products from primary sources.

Deliveries of petroleum products are defined as: primary product receipts + gross refinery output + recycled products – refinery fuel + imports – exports – international marine bunkers + interproduct transfers – products transferred – stock changes.

### Natural gas

*Production* – all dry marketable production within national boundaries including offshore production.

Production is

measured after purification and extraction of NGLs and sulphur.

*Deliveries* – total natural gas, distributed for the internal market, including own use and losses. This is defined as: *Indigenous production + Imports – Exports – Stock change*.

Data are presented in million standard cubic metres – at international standard conditions 15° C and 760 mm Hg.

### Electricity

*Production* – produced electricity from Thermal power plants, Nuclear power plant, Hydro power plants, Pumped storage plant and electricity, obtained from wind generators and solar collectors.

*Deliveries* – sum of net produced electricity and net import.

ANNEX

Table 1

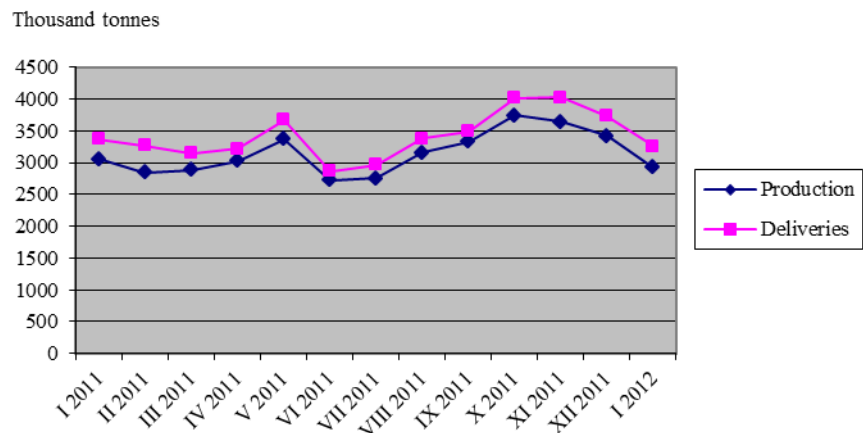
Production of energy products														
	Measure	January 2011	February 2011	March 2011	April 2011	May 2011	June 2011	July 2011	August 2011	September 2011	October 2011	November 2011	December 2011	January 2012
Solid fuels	thousand tonnes	3057	2850	2885	3032	3370	2726	2759	3156	3331	3745	3640	3426	2922
Total petroleum products	thousand tonnes	489	303	550	490	451	538	481	498	542	539	455	466	442
including:														
Liquefied petroleum gases	thousand tonnes	10	6	10	12	10	11	10	9	11	10	10	10	9
Unleaded motor gasoline	thousand tonnes	135	72	153	132	124	141	124	126	141	135	124	129	116
Transport diesel	thousand tonnes	149	93	184	162	140	163	136	126	176	203	145	154	135
Natural gas	million standard cubic metres	..	..	..	..	..	..	..	..	..	..	..	..	..
Electricity	GWh	4971	4508	4401	3850	3661	3727	4237	4029	3810	4013	4516	4787	4643

Table 2

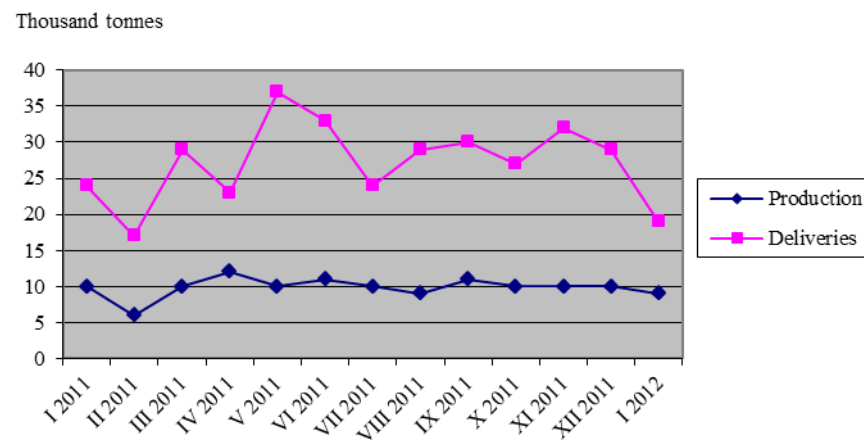
Deliveries of energy products														
	Measure	January 2011	February 2011	March 2011	April 2011	May 2011	June 2011	July 2011	August 2011	September 2011	October 2011	November 2011	December 2011	January 2012
Solid fuels	thousand tonnes	3375	3268	3145	3221	3674	2870	2964	3377	3494	4014	4024	3733	3258
Total petroleum products	thousand tonnes	199	124	222	216	255	231	281	323	287	364	288	282	234
including:														
Liquefied petroleum gases	thousand tonnes	24	17	29	23	37	33	24	29	30	27	32	29	19
Unleaded motor gasoline	thousand tonnes	35	26	46	24	38	32	43	59	44	16	56	46	36
Transport diesel	thousand tonnes	95	40	92	115	120	100	136	155	143	199	126	166	143
Natural gas	million standard cubic metres	399	360	348	251	217	176	184	204	164	225	331	359	407
Electricity	GWh	3630	3268	3286	2601	2380	2450	2595	2577	2446	2837	3246	3425	3725



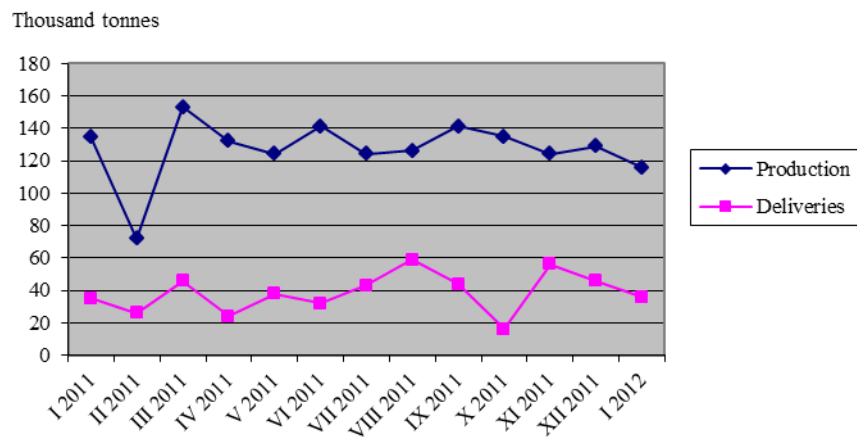
**Figure 1. Solid fuels**



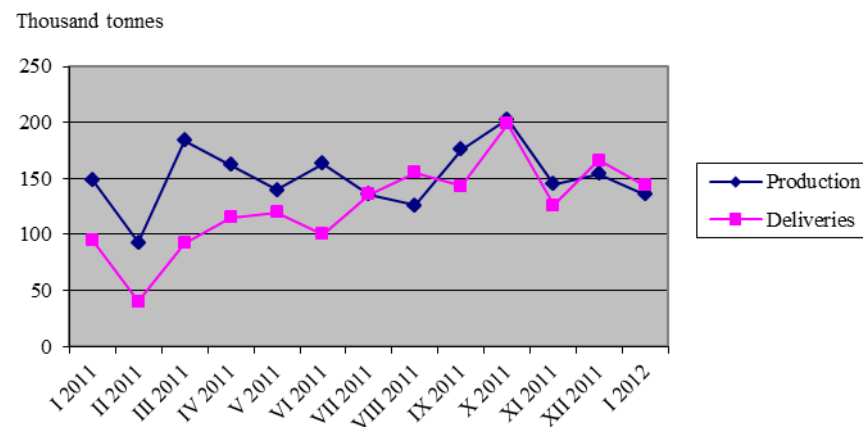
**Figure 2. Liquefied petroleum gases**



**Figure 3. Unleaded motor gasoline**



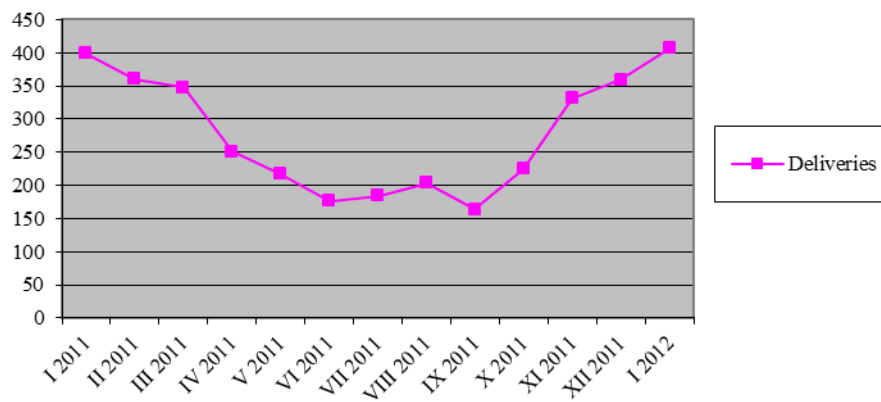
**Figure 4. Transport diesel**





**Figure 5. Natural gas**

Million standard cubic metres



**Figure 6. Electricity**

GWh

