



PRODUCTION AND DELIVERIES OF ENERGY PRODUCTS, SEPTEMBER - NOVEMBER 2011

September 2011

The production of solid fuels in September 2011 compared to August 2011 increases by 5.5% to 3 331 thousand tonnes, liquefied petroleum gases - by 22.2% to 11 thousand tonnes, unleaded motor gasoline - by 11.9% to 141 thousand tonnes and transport diesel - by 39.7% to 176 thousand tonnes. The production of electricity decreases by 5.4% to 3 810 GWh (Table 1).

The production of solid fuels in September 2011 compared to September 2010 increases by 9.7%, liquefied petroleum gases - by 22.2%, unleaded motor gasoline - by 6.8%, transport diesel - by 29.4% and electricity - by 9.0%.

The deliveries of solid fuels in September 2011 compared to August 2011 increase by 3.5% to 3 494 thousand tonnes and liquefied petroleum gases - by 3.4% to 30 thousand tonnes. Decrease is reported for the deliveries of unleaded motor gasoline - by 25.4% to 44 thousand tonnes, transport diesel - by 7.7% to 143 thousand tonnes, natural gas - by 19.6% to 164 million standard cubic metres and electricity - by 5.1% to 2 446 GWh (Table 2).

The deliveries of solid fuels in September 2011 compared to September 2010 increase by 5.9%, liquefied petroleum gases - by 3.4%, natural gas - by 4.5% and electricity - by 6.2%. Decrease is reported for the deliveries of unleaded motor gasoline - by 33.3% and transport diesel - by 13.9%.

October 2011¹

The production of solid fuels in October 2011 compared to September 2011 increases by 12.4% to 3 745 thousand tonnes, transport diesel - by 15.3% to 203 thousand tonnes and electricity - by 5.3% to 4 013 GWh. The production of liquefied petroleum gases decreases by 9.1% to 10 thousand tonnes and unleaded motor gasoline - by 4.3% to 135 thousand tonnes (Table 1).

The production of solid fuels in October 2011 compared to October 2010 increases by 7.2%, transport diesel - by 37.2% and electricity - by 3.2%. Decrease is reported for the production of liquefied petroleum gases by 9.1% and unleaded motor gasoline - by 6.9%.

The deliveries of solid fuels in October 2011 compared to September 2011 increase by 14.9% to 4 014 thousand tonnes, transport diesel - by 39.2% to 199 thousand tonnes, natural gas - by 37.2% to 225 million standard cubic metres and electricity - by 16.0% to 2 837 GWh. Decrease is reported for the deliveries of liquefied petroleum gases by 10.0% to 27 thousand tonnes and unleaded motor gasoline - by 63.6% to 16 thousand tonnes (Table 2).

The deliveries of solid fuels in October 2011 compared to October 2010 increase by 1.8%, transport diesel - by 41.1%, natural gas - by 1.8% and electricity - by 0.9%. Decrease is reported for the deliveries of liquefied petroleum gases by 12.9% and unleaded motor gasoline - by 65.2%.



November 2011¹

The production of electricity in November 2011 compared to October 2011 increases by 12.5% to 4 516 GWh. The production of solid fuels decreases by 2.8% to 3 640 thousand tonnes, unleaded motor gasoline - by 8.1% to 124 thousand tonnes and transport diesel - by 28.6% to 145 thousand tonnes. There is no change in the production of liquefied petroleum gases (Table 1).

The production of solid fuels in November 2011 compared to November 2010 increases by 11.7% and electricity - by 15.2%. Decrease is reported for the production of liquefied petroleum gases by 28.6%, unleaded motor gasoline - by 19.5% and transport diesel - by 15.2%.

The deliveries of solid fuels in November 2011 compared to October 2011 increase by 0.2% to 4 024 thousand tonnes, liquefied petroleum gases - by 18.5% to 32 thousand tonnes, unleaded motor gasoline - by 250.0% to 56 thousand tonnes, natural gas - by 47.1% to 331 million standard cubic metres and electricity - by 14.4% to 3 246 GWh. Decrease is reported for the deliveries of transport diesel by 36.7% to 126 thousand tonnes (Table 2).

The deliveries of solid fuels in November 2011 compared to November 2010 increase by 12.2%, liquefied petroleum gases - by 18.5%, unleaded motor gasoline - by 9.8%, natural gas - by 26.8% and electricity - by 22.5%. Decrease is reported for the deliveries of transport diesel by 16.6%.

¹ Preliminary data. Data series can be found on: www.nsi.bg, section Energy/Table data and Graphs/ Latest data.



METHODOLOGYCAL NOTES

The survey on energy products is conducted every month in accordance with the adopted Regulation of the European Parliament and of the Council on energy statistics. The survey aims to submit information on the production and inland deliveries of the main energy products – electricity, solid fuels, natural gas and petroleum products. Respondents of the survey are producers, importers and exporters of energy products. Production and deliveries of the energy products are the main observed indicators.

Solid fuels

Production – Include Hard coal, Lignite and Solid fuels from coal. Producers report quantities, calculated after any operation for removal of inert matter.

Deliveries – quantities delivered to the internal market. Equal to the total of the deliveries to the different types of consumers: producers' own use, main activity power stations, coking plants and patent fuel plants, industry, iron and steel industry and others.

Petroleum products

Production – production of finished products at a refinery or blending plant.

Deliveries – the observed delivery of finished petroleum products from primary sources.

Deliveries of petroleum products are defined as: primary product receipts + gross refinery output + recycled products – refinery fuel + imports – exports – international marine bunkers + interproduct transfers – products transferred – stock changes.

Natural gas

Production – all dry marketable production within national boundaries including offshore production. Production is

measured after purification and extraction of NGLs and sulphur.

Deliveries – total natural gas, distributed for the internal market, including own use and losses. This is defined as: *Indigenous production + Imports – Exports – Stock change*.

Data are presented in million standard cubic metres – at international standard conditions 15° C and 760 mm Hg.

Electricity

Production – produced electricity from Thermal power plants, Nuclear power plant, Hydro power plants, Pumped storage plant and electricity, obtained from wind generators and solar collectors.

Deliveries – sum of net produced electricity and net import.

Table 1

Production of energy products²																
	Measure	September 2010	October 2010	November 2010	December 2010	January 2011	February 2011	March 2011	April 2011	May 2011	June 2011	July 2011	August 2011	September 2011	October 2011	November 2011
Solid fuels	thousand tonnes	3036	3493	3258	2752	3057	2850	2885	3032	3370	2726	2759	3156	3331	3745	3640
Total petroleum products	thousand tonnes	505	523	566	473	489	303	550	490	451	538	481	498	542	539	455
including:																
Liquefied petroleum gases	thousand tonnes	9	11	14	9	10	6	10	12	10	11	10	9	11	10	10
Unleaded motor gasoline	thousand tonnes	132	145	154	131	135	72	153	132	124	141	124	126	141	135	124
Transport diesel	thousand tonnes	136	148	171	144	149	93	184	162	140	163	136	126	176	203	145
Natural gas	million standard cubic metres
Electricity	GWh	3496	3890	3919	4650	4971	4508	4401	3850	3661	3727	4237	4029	3810	4013	4516

Table 2

Deliveries of energy products²																
	Measure	September 2010	October 2010	November 2010	December 2010	January 2011	February 2011	March 2011	April 2011	May 2011	June 2011	July 2011	August 2011	September 2011	October 2011	November 2011
Solid fuels	thousand tonnes	3298	3942	3585	3051	3375	3268	3145	3221	3674	2870	2964	3377	3494	4014	4024
Total petroleum products	thousand tonnes	334	274	297	251	199	124	222	216	255	231	281	323	287	364	288
including:																
Liquefied petroleum gases	thousand tonnes	29	31	27	26	24	17	29	23	37	33	24	29	30	27	32
Unleaded motor gasoline	thousand tonnes	66	46	51	44	35	26	46	24	38	32	43	59	44	16	56
Transport diesel	thousand tonnes	166	141	151	121	95	40	92	115	120	100	136	155	143	199	126
Natural gas	million standard cubic metres	157	221	261	367	399	360	348	251	217	176	184	204	164	225	331
Electricity	GWh	2304	2812	2650	3323	3630	3268	3286	2601	2380	2450	2595	2577	2446	2837	3246

²Data are operational.

.. 'Confidential data.



Figure 1. Solid fuels

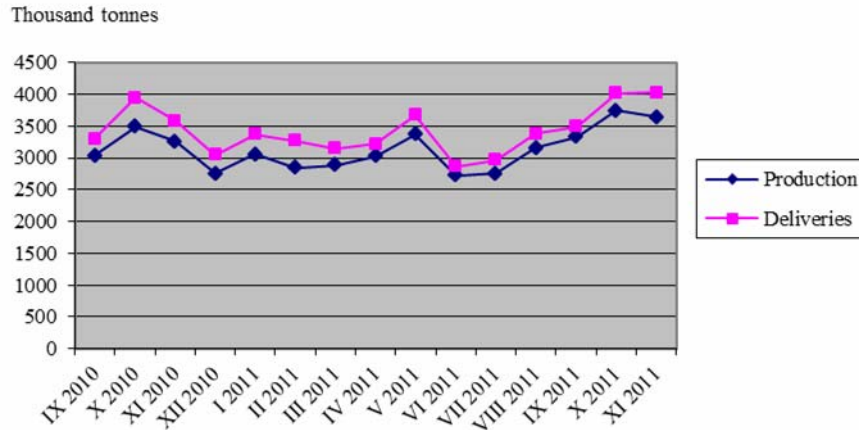


Figure 2. Liquefied petroleum gases

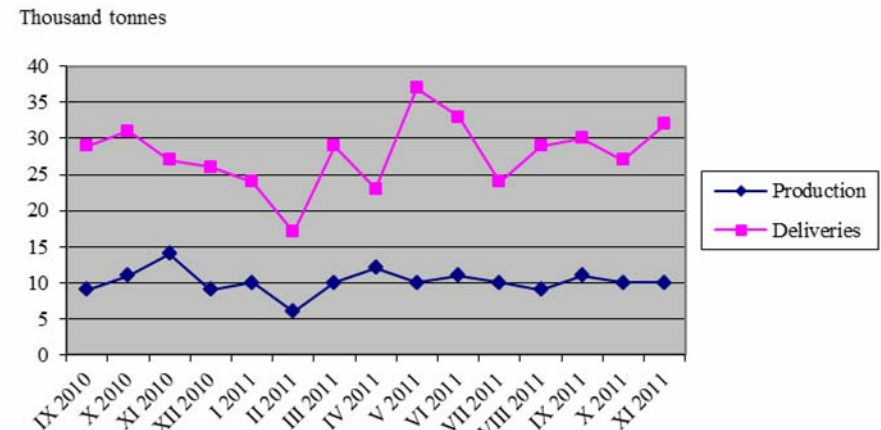


Figure 3. Unleaded motor gasoline

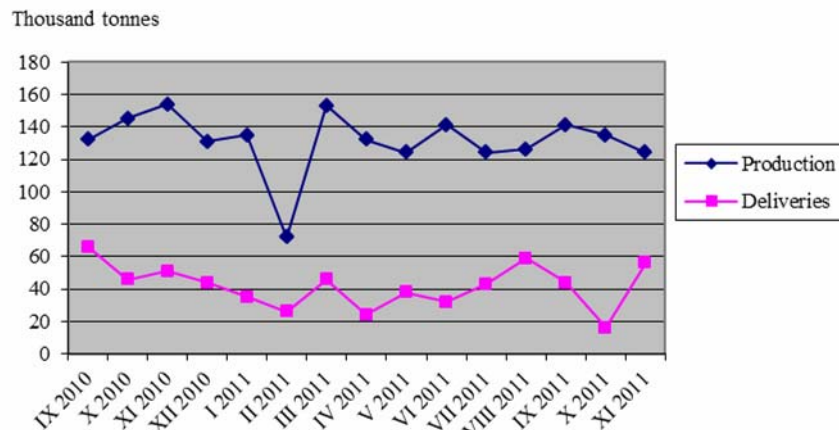


Figure 4. Transport diesel

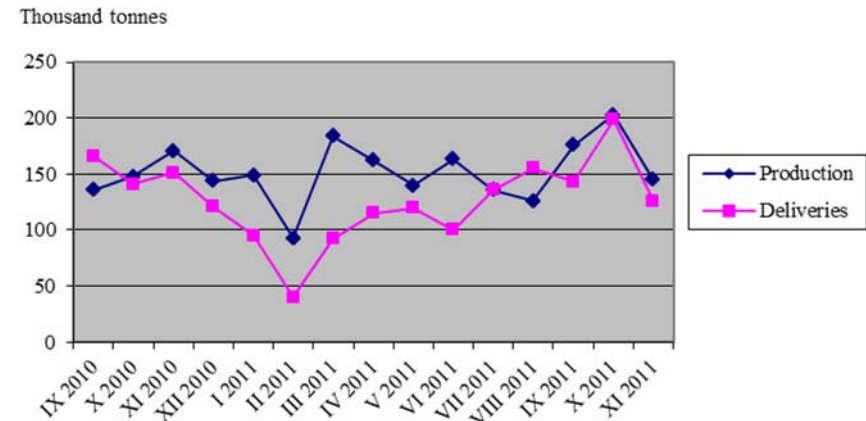




Figure 5. Natural gas

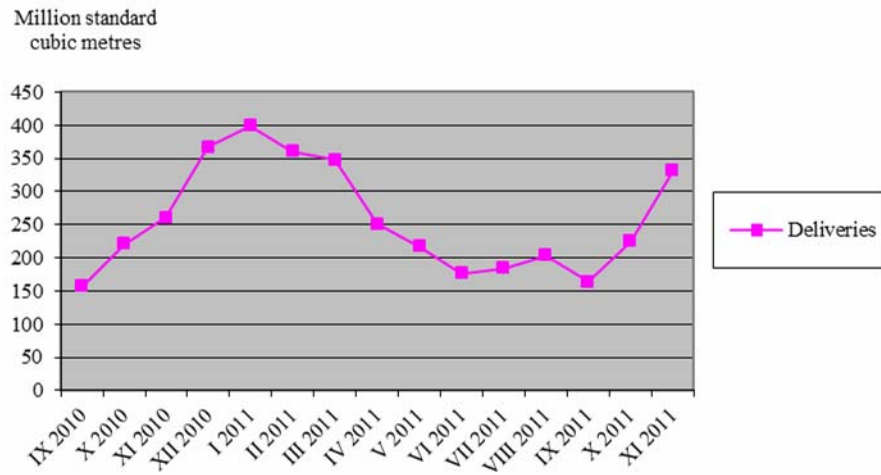


Figure 6. Electricity

