



EMPLOYEES UNDER LABOUR CONTRACT AND GROSS AVERAGE WAGES AND SALARIES, FIRST QUARTER OF 2018

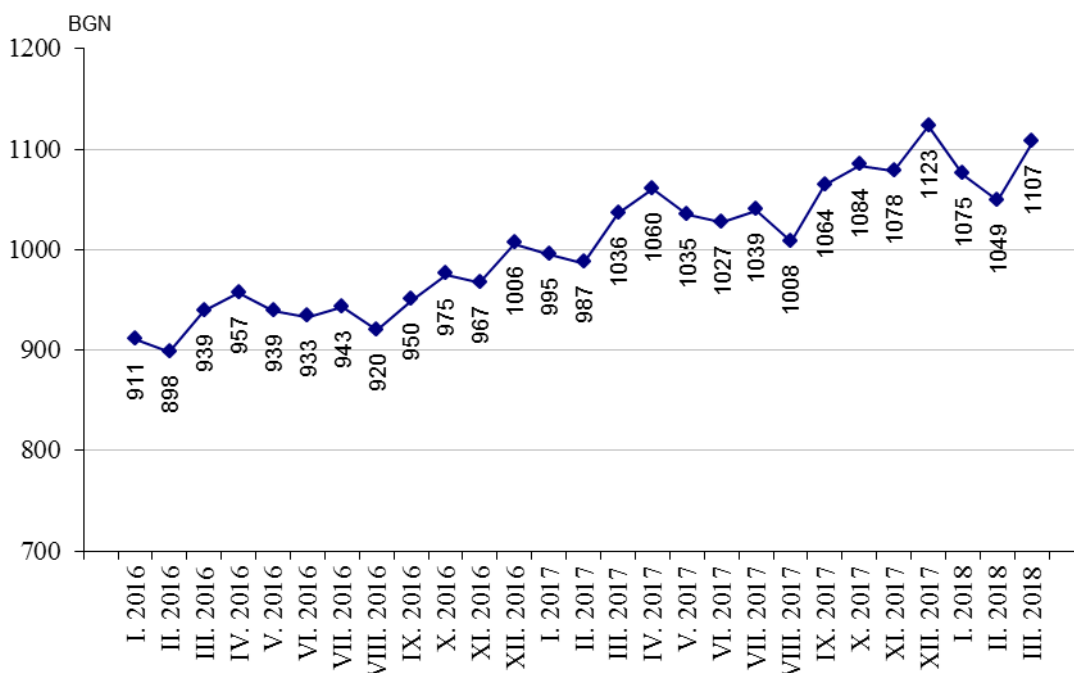
According to the preliminary data of the National Statistical Institute (NSI) at the end of March 2018 the **number of employees** under labour contract increased by 35.2 thousand or 1.5% as compared to the end of December 2017 and reached 2.31 million. The highest increase was observed in economic activities: ‘Arts, entertainment and recreation’ - 4.8%, ‘Information and communication’ - 4.5% and ‘Agriculture, forestry and fishing’ - 4.2%. The highest decrease of the number of employees was recorded in ‘Electricity, gas, steam and air conditioning supply’ - by 0.8%.

In the structure of employees by economic activities the biggest relative share of employees was in ‘Manufacturing’ - 22.4% and ‘Wholesale and retail trade; repair of motor vehicles and motorcycles’ - 17.1%.

At the end of March 2018 as compared to March 2017 the number of employees under labour contract increased by 34.5 thousand or 1.5%. The highest increase in absolute figures was observed in economic activities ‘Manufacturing’ - 6.4 thousand, ‘Accommodation and food service activities’ - 5.2 thousand, and ‘Construction’ - 4.9 thousand and the highest decrease - in ‘Real estate activities’ - 1.0 thousand. In percentages the highest increase at the end of March 2018 as compared to March 2017 was in economic activity ‘Accommodation and food service activities’ - by 5.1% and ‘Information and communication’ - by 5.0%, as the highest decrease was reported in ‘Real estate activities’ - by 4.3%.

The **average monthly wages and salaries** of the employees under labour contract in January was 1 075 BGN, in February - 1 049 BGN and in March 2018 - 1 107 BGN.

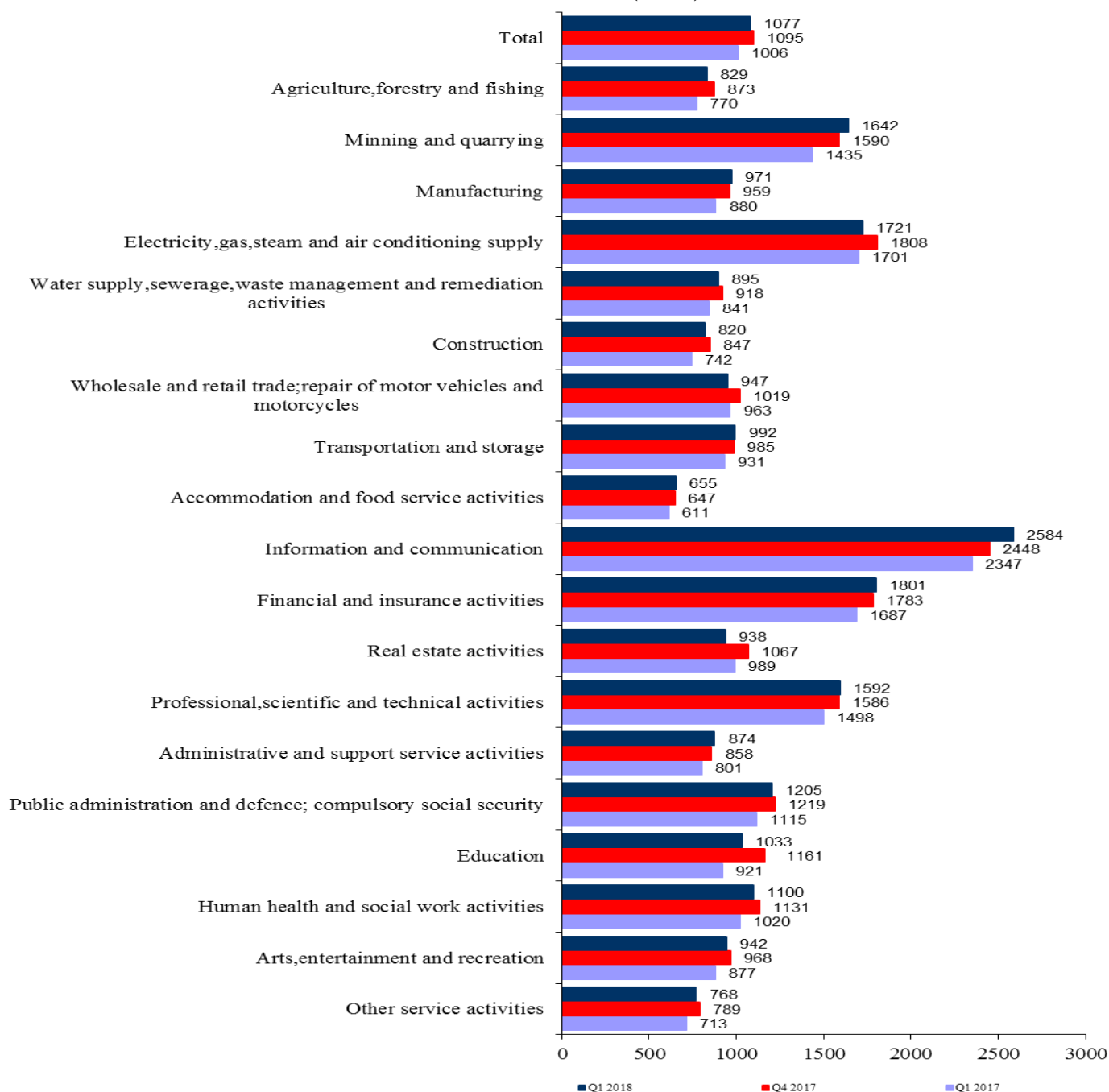
Figure 1. Gross average wages and salaries by months





In the first quarter of 2018 in comparison with the fourth quarter of 2017 the average monthly wages and salaries decreased by 1.6% getting 1 077 BGN. The highest decrease in wages and salaries was reported in 'Real estate activities' - by 12.1%, 'Education' - by 11.0% and 'Wholesale and retail trade; repair of motor vehicles and motorcycles' - by 7.1%.

Figure 2. Gross average monthly wages and salaries of the employees under labour contract by economic activities (BGN)





Compared to the first quarter of 2017 the average monthly wages and salaries in the first quarter of 2018 rose by 7.1%. The highest growth rates were recorded in economic activities: ‘Mining and quarrying’ - 14.4%, ‘Education’ - 12.2% and ‘Construction’ - 10.5%.

The economic activities with the highest wages and salaries in the first quarter of 2018 were:

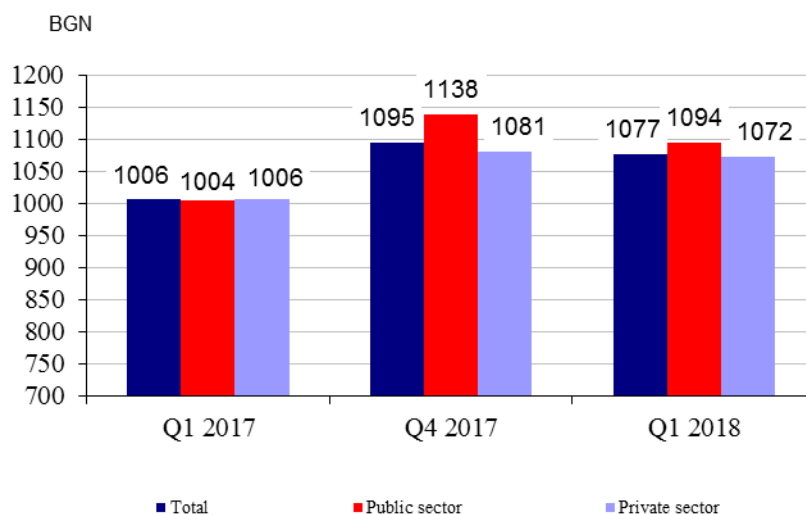
- ‘Information and communication’ - 2 584 BGN
- ‘Financial and insurance activities’ - 1 801 BGN
- ‘Electricity, gas, steam and air conditioning supply’ - 1 721 BGN.

The lowest wages and salaries were recorded in:

- ‘Accommodation and food service activities’ - 655 BGN
- ‘Other service activities’ - 768 BGN
- ‘Construction’ - 820 BGN.

In comparison with a year earlier the average monthly wages and salaries in public sector grew by 9.0% while in private sector - by 6.6%.

Figure 3. Gross average monthly wages and salaries by kind of ownership





Methodological notes

The source of information is the Quarterly Survey on employees, hours worked, wages and salaries, and other expenditures paid by the employer. It is sample survey which main purpose is to make a study of the current state and dynamics of some main aspects of labour market. The sample used for the survey is a stratified random sample without replacement. Stratification criteria used include: economic activity (NACE rev. 2), size of the enterprise (according to the number of employees) and regional breakdown (28 districts, NUTS3).

More methodological information on the quarterly survey and data could be found on the NSI official website:

http://www.nsi.bg/sites/default/files/files/metadata/Labour_Method_1.1_EN.pdf;

<http://www.nsi.bg/en/content/6398/short-term-statistics>.



Annex

Table 1

Employees under labour contract at the end of the month by economic activities in 2018¹

(Number)

Economic activities	2018		
	January	February	March
Total	2305111	2308505	2311783
Agriculture, forestry and fishing	67918	68797	70486
Mining and quarrying	21793	21781	21880
Manufacturing	518737	518652	518600
Electricity, gas, steam and air conditioning supply	30073	30041	30020
Water supply, sewerage, waste management and remediation activities	36538	36532	36691
Construction	122034	121946	122001
Wholesale and retail trade; repair of motor vehicles and motorcycles	394616	395147	395230
Transportation and storage	143041	143369	143657
Accommodation and food service activities	107523	107345	106658
Information and communication	88802	88893	88736
Financial and insurance activities	58232	57902	57919
Real estate activities	21554	21430	21434
Professional, scientific and technical activities	80998	81220	81296
Administrative and support service activities	117547	117491	117890
Public administration and defence; compulsory social security	111575	112242	113204
Education	167971	168289	168232
Human health and social work activities	142866	143786	144314
Arts, entertainment and recreation	35684	36020	35984
Other service activities	37609	37622	37551

¹ Preliminary data.



Table 2

Gross average monthly wages and salaries of the employees under labour contract by economic activities in 2018¹

Economic activities	(BGN)		
	2018		
	January	February	March
Total	1075	1049	1107
Agriculture, forestry and fishing	813	813	859
Mining and quarrying	1588	1501	1836
Manufacturing	961	945	1007
Electricity, gas, steam and air conditioning supply	1656	1675	1832
Water supply, sewerage, waste management and remediation activities	892	872	922
Construction	798	812	848
Wholesale and retail trade; repair of motor vehicles and motorcycles	943	926	971
Transportation and storage	997	971	1007
Accommodation and food service activities	656	643	665
Information and communication	2562	2500	2689
Financial and insurance activities	1775	1722	1906
Real estate activities	920	923	971
Professional, scientific and technical activities	1532	1589	1653
Administrative and support service activities	873	846	902
Public administration and defence; compulsory social security	1365	1103	1147
Education	1027	1028	1045
Human health and social work activities	1096	1087	1118
Arts, entertainment and recreation	933	927	965
Other service activities	762	767	775

¹ Preliminary data.