



EMPLOYEES UNDER LABOUR CONTRACT AND GROSS AVERAGE WAGES AND SALARIES, FOURTH QUARTER OF 2015

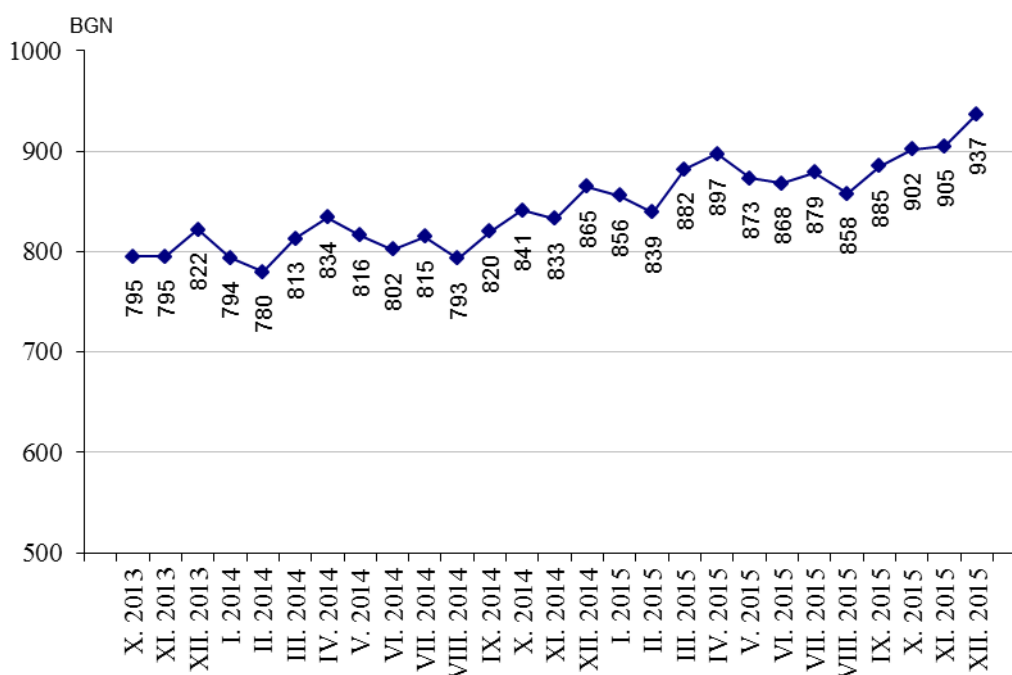
According to the preliminary data of the National Statistical Institute (NSI) at the end of December 2015 the **number of employees** under labour contract decreased by 50.8 thousand or 2.2% as compared to the end of September 2015 and reached 2.22 million. The highest decrease was observed in economic activities: ‘Accommodation and food service activities’ - 15.1%, ‘Agriculture, forestry and fishing’ - 11.2% and ‘Administrative and support service activities’ - 6.5%. Increase of the number of employees was recorded in ‘Information and communication’ - 0.8% and ‘Education’ - 0.6%.

In the structure of employees by economic activities the biggest relative share of employees was in ‘Manufacturing’ - 22.3% and ‘Wholesale and retail trade; repair of motor vehicles and motorcycles’ - 17.5%.

At the end of December 2015 as compared to December 2014 the number of employees under labour contract increased by 17.6 thousand or 0.8%. The highest increase in absolute figures was observed in economic activities ‘Information and communication’ - 6.7 thousand, ‘Manufacturing’ - 6.0 thousand and ‘Transportation and storage’ - 5.7 thousand. In percentages the highest increase was in ‘Information and communication’ - 9.5%, ‘Transportation and storage’ - by 4.4% and ‘Accommodation and food service activities’ - by 4.1%. The highest decrease at the end of December 2015 as compared to December 2014 was registered in economic activity ‘Administrative and support service activities’ - in absolute figures by 5.6 thousand and in percentages - by 4.9%.

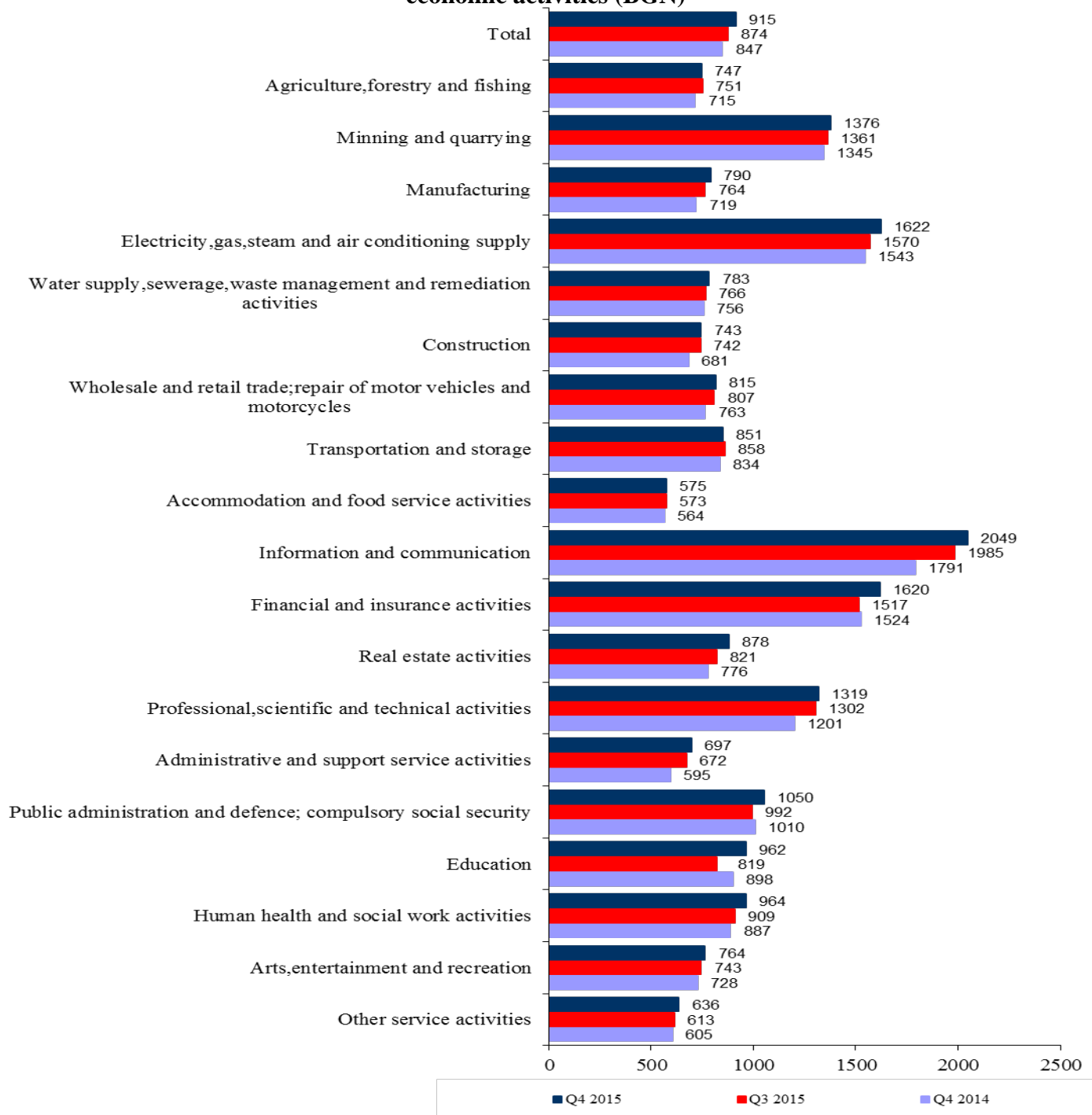
The **average monthly wages and salaries** of the employees under labour contract in October was 902 BGN, in November - 905 BGN and in December 2015 - 937 BGN.

Figure 1. Gross average wages and salaries by months



In the fourth quarter of 2015 in comparison with the third quarter of 2015 the average monthly wages and salaries increased by 4.7% getting 915 BGN. The highest increase in wages and salaries was reported in 'Education' - 17.5%, 'Real estate activities' - 6.9% and 'Financial and insurance activities' - 6.8%.

Figure 2. Gross average monthly wages and salaries of the employees under labour contract by economic activities (BGN)





Compared to the fourth quarter of 2014 the average monthly wages and salaries in the fourth quarter of 2015 rose by 8.0%. The highest growth rates were recorded in economic activities: ‘Administrative and support service activities’ - 17.1%, ‘Information and communication’ - 14.4%, and ‘Real estate activities’ - 13.1%.

The economic activities with the highest wages and salaries in the fourth quarter of 2015 were:

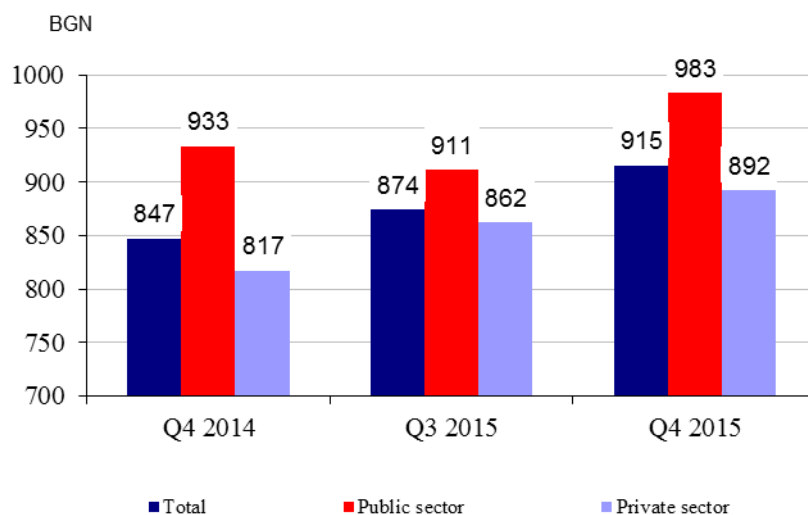
- ‘Information and communication’ - 2 049 BGN
- ‘Electricity, gas, steam and air conditioning supply’ - 1 622 BGN
- ‘Financial and insurance activities’ - 1 620 BGN.

The lowest wages and salaries were recorded in:

- ‘Accommodation and food service activities’ - 575 BGN
- ‘Other services activities’ - 636 BGN
- ‘Administrative and support service activities’ - 697 BGN.

In comparison with a year earlier the average monthly wages and salaries in public sector grew by 5.4% while in private sector - by 9.2%.

Figure 3. Gross average monthly wages and salaries by kind of ownership





Methodological notes

The source of information is the Quarterly Survey on employees, hours worked, wages and salaries, and other expenditures paid by the employer. It is sample survey which main purpose is to make a study of the current state and dynamics of some main aspects of labour market. The sample used for the survey is a stratified random sample without replacement. Stratification criteria used include: economic activity (NACE rev.2), size of the enterprise (according to the number of employees) and regional breakdown (28 districts, NUTS3).

More methodological information on the quarterly survey and data could be found on the NSI official website:

http://www.nsi.bg/sites/default/files/files/metadata/Labour_Method_1.1_EN.pdf

<http://www.nsi.bg/en/content/6398/short-term-statistics>

Annex

Table 1

Employees under labour contract at the end of the month by economic activities in 2015¹

(Number)

Economic activities	2015		
	October	November	December
Total	2244309	2235816	2220733
Agriculture, forestry and fishing	74111	71068	68390
Mining and quarrying	23867	23785	23358
Manufacturing	498983	497672	494714
Electricity, gas, steam and air conditioning supply	30507	30628	30512
Water supply, sewerage, waste management and remediation activities	35440	35267	34941
Construction	128372	128441	123520
Wholesale and retail trade; repair of motor vehicles and motorcycles	389877	389959	388295
Transportation and storage	135557	135507	134445
Accommodation and food service activities	100827	98653	100333
Information and communication	76432	76889	76833
Financial and insurance activities	56505	56661	56549
Real estate activities	22000	21950	21877
Professional, scientific and technical activities	74636	74886	74155
Administrative and support service activities	109979	107892	107463
Public administration and defence; compulsory social security	113512	112675	112259
Education	169535	169861	169043
Human health and social work activities	137664	137842	137930
Arts, entertainment and recreation	32565	32144	32392
Other service activities	33940	34036	33724

¹ Preliminary data.



Table 2

Gross average monthly wages and salaries of the employees under labour contract by economic activities in 2015¹

Economic activities	(BGN)		
	2015		
	October	November	December
Total	902	905	937
Agriculture, forestry and fishing	723	750	770
Mining and quarrying	1345	1316	1468
Manufacturing	777	795	798
Electricity, gas, steam and air conditioning supply	1545	1551	1771
Water supply, sewerage, waste management and remediation activities	759	778	813
Construction	735	746	748
Wholesale and retail trade; repair of motor vehicles and motorcycles	796	813	835
Transportation and storage	842	843	868
Accommodation and food service activities	571	566	588
Information and communication	2041	2010	2095
Financial and insurance activities	1537	1674	1647
Real estate activities	861	877	897
Professional, scientific and technical activities	1286	1314	1356
Administrative and support service activities	677	694	722
Public administration and defence; compulsory social security	1206	961	980
Education	926	918	1043
Human health and social work activities	940	965	986
Arts, entertainment and recreation	747	751	794
Other service activities	620	628	661

¹ Preliminary data.