



EMPLOYEES UNDER LABOUR CONTRACT AND AVERAGE GROSS WAGES AND SALARIES, FOURTH QUARTER OF 2013

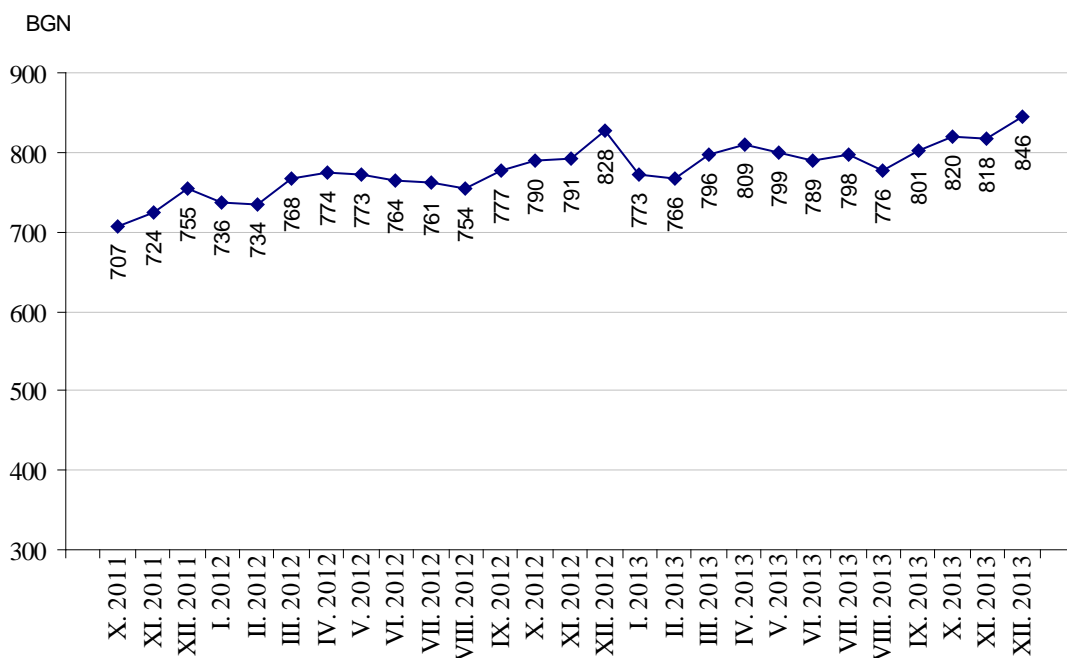
According to the preliminary data of the National Statistical Institute (NSI) at the end of December 2013 the **number of employees** under labour contract has decreased by 57.1 thousands or 2.5% as compared to the end of September 2013 and has reached 2.21 million. The highest decrease was observed in economic activities “Accommodation and food service activities” - 20.0%, “Agriculture, forestry and fishing” - 9.4% and “Arts, entertainment and recreation”- 7.4%. Increase of employees was recorded in “Information and communication” - 1.0%.

In the structure of employees by economic activities the biggest relative share of employees was in “Manufacturing” - 21.8% and “Wholesale and retail trade; repair of motor vehicles and motorcycles” - 17.5%.

At the end of December 2013 as compared to December 2012 the number of employees under labour contract has declined by 12.5 thousands or 0.6%. The highest decrease in absolute figures was observed in economic activities “Manufacturing” - 8.5 thousands, “Administrative and support service activities” - 4.5 thousands and “Accommodation and food service activities” - 4.1 thousands. In percentages, the highest decrease was in “Real estate activities” - 4.2%, “Accommodation and food service activities” - 4.1% and “Administrative and support service activities”- by 3.6%.

The **average gross monthly wages** and salaries of the employees under labour contract in October was 820 BGN, in November - 818 BGN and in December 2013 - 846 BGN.

Figure 1. Average wages and salaries by months

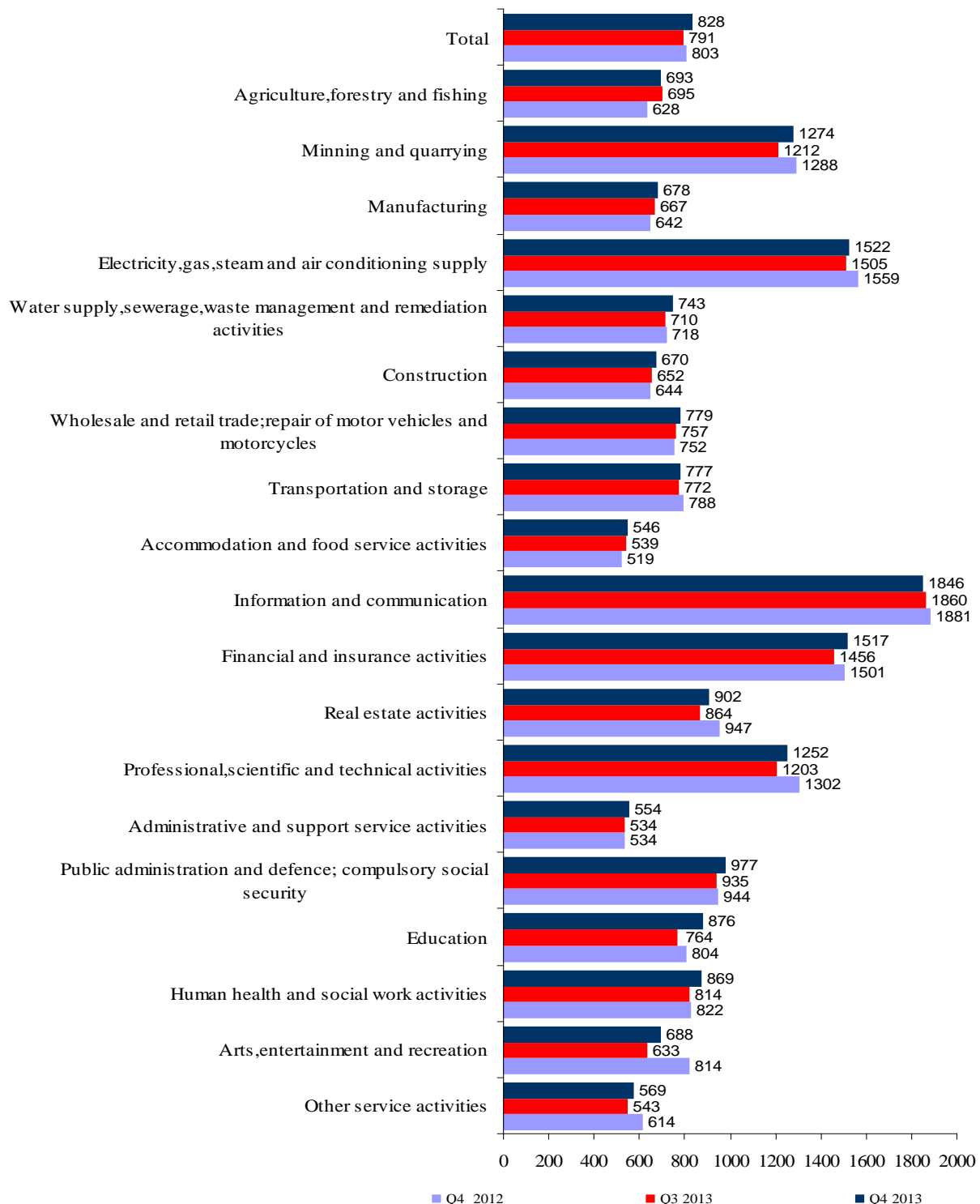




www.nsi.bg

In the fourth quarter of 2013 in comparison with the third quarter of 2013 the average monthly wages and salaries have increased by 4.7% getting 828 BGN. The highest decrease in wages and salaries was reported in “Education” - 14.7%, “Arts, entertainment and recreation” - 8.7% and “Human health and social work activities” - 6.8%.

Figure 2. Average monthly wages and salaries of the employees under labour contract by economic activities (BGN)





Compared to the fourth quarter of 2012 the average monthly wages and salaries in the fourth quarter of 2013 have risen by 3.1%. The highest growth rates were recorded in economic activities: “Agriculture, forestry and fishing” - 10.4%, “Education” - 9.0% and “Human health and social work activities” - 5.7%.

The economic activities with the highest wages and salaries in the fourth quarter of 2013 were:

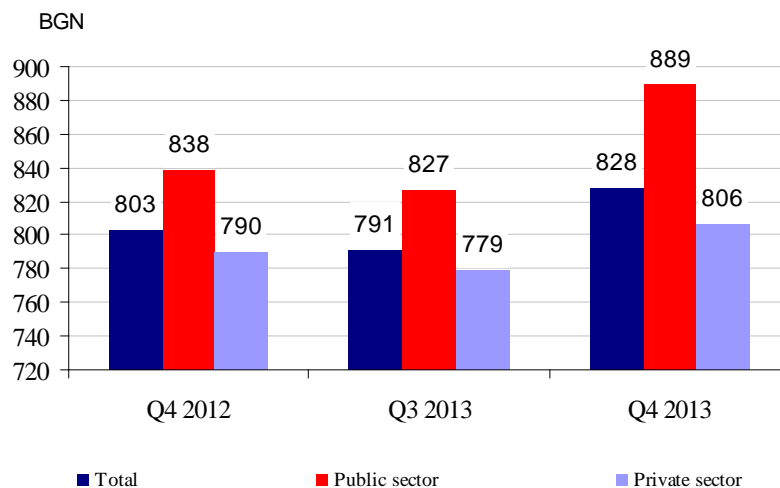
- “Information and communication” - 1 846 BGN
- “Electricity, gas, steam and air conditioning supply” - 1 522 BGN
- “Financial and insurance activities” - 1 517 BGN.

The lowest wages and salaries were recorded in:

- “Accommodation and food service activities” - 546 BGN
- “Administrative and support service activities” - 554 BGN
- “Other services activities” - 569 BGN.

In comparison with a year earlier the average monthly wages and salaries in public sector have grown by 6.1%, while in private sector - by 2.0%.

Figure 3. Average monthly wages and salaries by kind of ownership





Methodological notes

The source of information is the Quarterly Survey on employees, hours worked, wages and salaries, and other expenditures paid by the employer. It is a sample survey with the main purpose to make a study of the current state and dynamics of some main aspects of the labour market. The sample used for the survey is a stratified random sample without replacement. Stratification criteria used include: economic activity (NACE rev.2), size of the enterprise (according to the number of employees) and regional breakdown (28 districts, NUTS3).

More methodological information on the quarterly survey and data could be found on the NSI web-site -<http://www.nsi.bg/en>.



Annex

Table 1

Employees under labour contract at the end of the month by economic activities in 2013¹

(Number)

Economic activity	2013		
	October	November	December
Total	2235433	2227396	2207601
Agriculture, forestry and fishing	71222	69092	65662
Mining and quarrying	23826	23730	23544
Manufacturing	486836	486216	482079
Electricity, gas, steam and air conditioning supply	30334	30409	30292
Water supply, sewerage, waste management and remediation activities	36650	36583	36347
Construction	130516	130673	126356
Wholesale and retail trade; repair of motor vehicles and motorcycles	386769	386625	385245
Transportation and storage	133558	133261	132154
Accommodation and food service activities	98160	95950	95060
Information and communication	68020	68170	68066
Financial and insurance activities	55691	55703	55650
Real estate activities	22737	22722	22692
Professional, scientific and technical activities	72178	72172	71999
Administrative and support service activities	129484	126086	122635
Public administration and defence; compulsory social security	115986	116165	115953
Education	168486	169073	168480
Human health and social work activities	137903	138042	138075
Arts, entertainment and recreation	32190	31977	32540
Other service activities	34887	34747	34772

¹ Preliminary data.



Table 2

Average monthly wages and salaries of the employees under labour contract by economic activities in 2013¹

(BGN)

Economic activity	2013		
	October	November	December
Total	820	818	846
Agriculture, forestry and fishing	709	660	710
Mining and quarrying	1145	1241	1438
Manufacturing	670	680	683
Electricity, gas, steam and air conditioning supply	1473	1499	1595
Water supply, sewerage, waste management and remediation activities	718	732	778
Construction	660	688	661
Wholesale and retail trade; repair of motor vehicles and motorcycles	762	778	797
Transportation and storage	751	784	797
Accommodation and food service activities	539	540	560
Information and communication	1809	1823	1906
Financial and insurance activities	1428	1533	1591
Real estate activities	890	893	922
Professional, scientific and technical activities	1208	1253	1294
Administrative and support service activities	548	543	573
Public administration and defence; compulsory social security	1166	873	892
Education	866	827	934
Human health and social work activities	855	877	876
Arts, entertainment and recreation	669	692	704
Other service activities	552	568	587

¹ Preliminary data.