



EMPLOYEES UNDER LABOUR CONTRACT AND AVERAGE WAGES AND SALARIES, SECOND QUARTER OF 2013

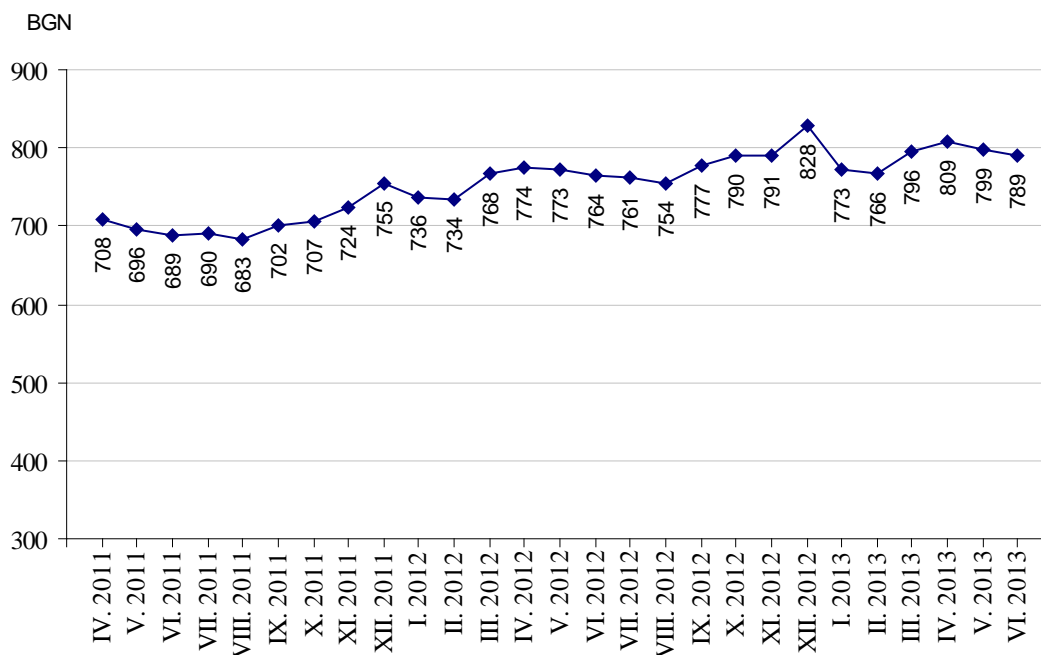
According to the preliminary data of the National Statistical Institute at the end of June 2013 the number of employees under labour contract increased by 74.9 thousands or 3.4% as compared to the end of March 2013 and reached 2.31 million. The highest increase was observed in seasonal economic activities “Accommodation and food service activities” - 52.9%, “Arts, entertainment and recreation” - 13.6% and “Agriculture, forestry and fishing”- 10.5%. A decrease of employees was recorded in “Education” - 2.0% and “Administrative and support service activities” - 0.4%.

In the structure of employees by economic activities the biggest relative share of employees was in “Manufacturing” - 21.3% and “Wholesale and retail trade; repair of motor vehicles and motorcycles” - 16.7%.

At the end of June 2013 as compared to June 2012 the number of employees under labour contract declined by 13.3 thousands or 0.6%. The highest decrease in absolute figures was observed in economic activities “Manufacturing” - 15.6 thousands and “Wholesale and retail trade; repair of motor vehicles and motorcycles” - 8.7 thousands. In percentages the highest decrease was in “Other service activities” - 7.8% and “Construction” - by 4.9%.

The average monthly wages and salaries of the employees under labour contract in April was 809 Levs, in May - 799 Levs and in June 2013 - 789 Levs.

Figure 1. Average wages and salaries by months

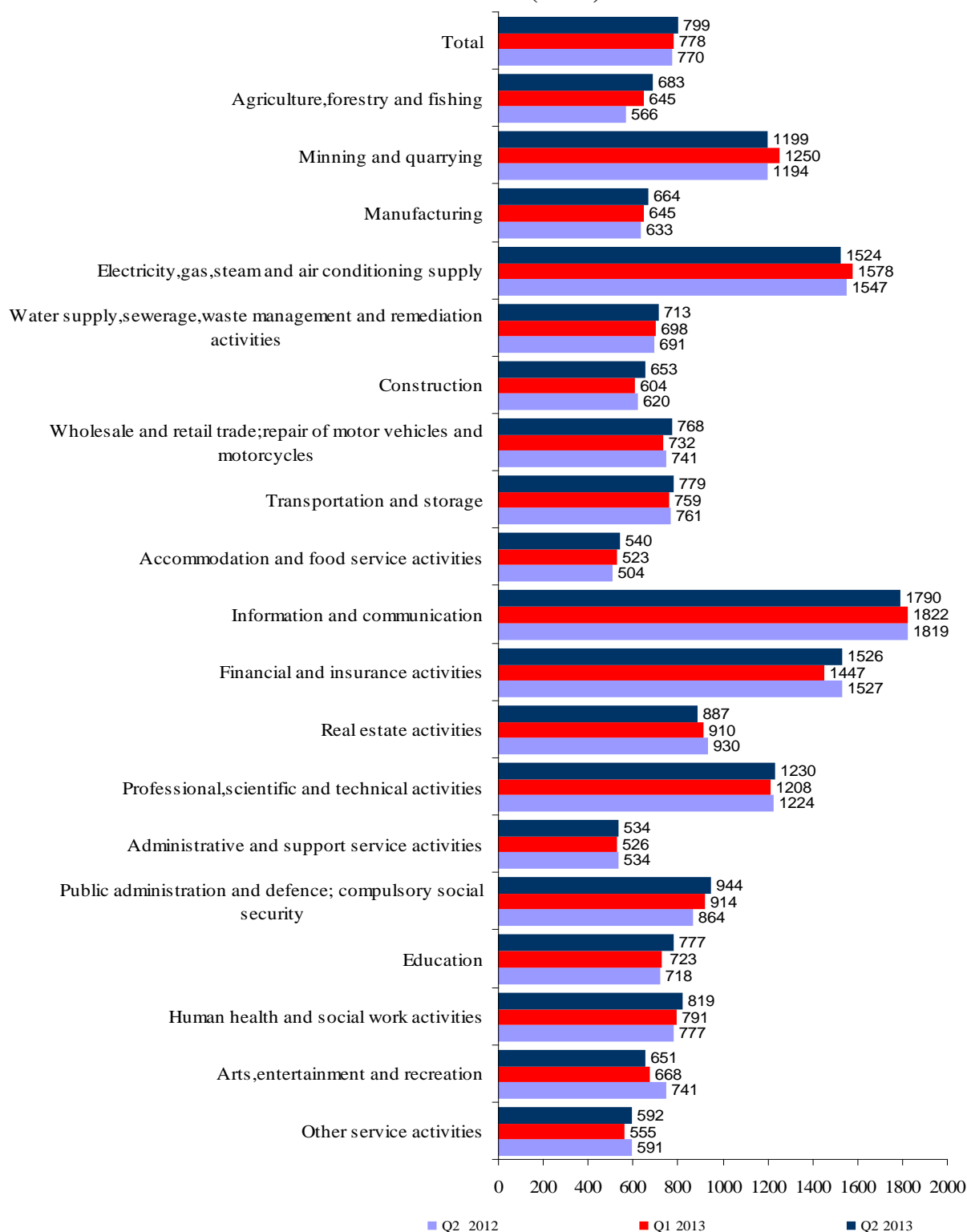




www.nsi.bg

In the second quarter of 2013 in comparison with the first quarter of 2013 the average monthly wages and salaries increased by 2.7% getting 799 Levs. The highest increase in wages and salaries was reported in “Construction - 8.1% and “Education” - 7.5%.

Figure 2. Average monthly wages and salaries of the employees under labour contract by economic activities (BGN)





Compared to the second quarter of 2012 the average monthly wages and salaries in the second quarter of 2013 rose by 3.8%. The highest growth rates were recorded in economic activities: “Agriculture, forestry and fishing” - 20.7%, “Public administration and defence; compulsory social security” - 9.3% and “Education” - 8.2%.

The economic activities with the highest wages and salaries in the second quarter of 2013 were:

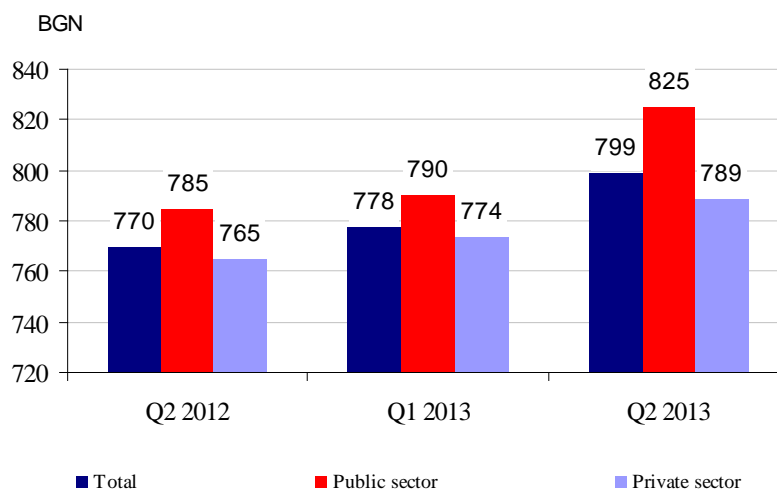
- “Information and communication” - 1 790 Levs
- “Financial and insurance activities” - 1 526 Levs
- “Electricity, gas, steam and air conditioning supply” - 1 524 Levs.

The lowest wages and salaries were recorded in:

- “Administrative and support service activities” - 534 Levs
- “Accommodation and food service activities” - 540 Levs
- “Other services activities” - 592 Levs.

In comparison with a year earlier the average monthly wages and salaries in public sector grew by 5.1%, while in private sector - by 3.1%.

Figure 3. Average monthly wages and salaries





Methodological notes

The source of information is the Quarterly Survey on employees, hours worked, wages and salaries, and other expenditures paid by the employer. It is sample survey which main purpose is to make a study of the current state and dynamics of some main aspects of labour market. The sample used for the survey is a stratified random sample without replacement. Stratification criteria used include: economic activity (NACE rev.2), size of the enterprise (according to the number of employees) and regional breakdown (28 districts, NUTS3).

More methodological information on the quarterly survey and data could be found on NSI official web page - <http://www.nsi.bg/otrasalen.php?otr=51>.



Annex

Table 1

Employees under labour contract at the end of the month by economic activities in 2013¹

(Numbers)

Economic activity	2013		
	April	May	June
Total	2248925	2280139	2305513
Agriculture, forestry and fishing	69916	71916	73517
Mining and quarrying	24589	24613	24764
Manufacturing	488675	489275	490759
Electricity, gas, steam and air conditioning supply	30521	30564	30681
Water supply, sewerage, waste management and remediation activities	37143	37277	37263
Construction	129595	130306	130939
Wholesale and retail trade; repair of motor vehicles and motorcycles	383030	384599	385648
Transportation and storage	133736	134219	135167
Accommodation and food service activities	106305	128560	148078
Information and communication	67647	67620	67629
Financial and insurance activities	55900	56070	56273
Real estate activities	23241	23426	23790
Professional, scientific and technical activities	72210	72036	72005
Administrative and support service activities	133366	134126	133994
Public administration and defence; compulsory social security	116061	116390	116482
Education	168593	167755	165235
Human health and social work activities	138239	138862	139547
Arts, entertainment and recreation	34003	36079	37242
Other service activities	36155	36446	36500

¹Preliminary data.



Table 2

Average monthly wages and salaries of the employees under labour contract by economic activities in 2013¹

Economic activity	(BGN)		
	2013		
	April	May	June
Total	809	799	789
Agriculture, forestry and fishing	683	654	712
Mining and quarrying	1078	1156	1361
Manufacturing	653	665	672
Electricity, gas, steam and air conditioning supply	1535	1548	1489
Water supply, sewerage, waste management and remediation activities	702	731	707
Construction	647	654	657
Wholesale and retail trade; repair of motor vehicles and motorcycles	775	770	758
Transportation and storage	767	812	759
Accommodation and food service activities	522	562	534
Information and communication	1764	1796	1810
Financial and insurance activities	1698	1400	1481
Real estate activities	909	887	865
Professional, scientific and technical activities	1235	1219	1237
Administrative and support service activities	527	546	530
Public administration and defence; compulsory social security	1087	880	867
Education	772	810	747
Human health and social work activities	825	827	804
Arts, entertainment and recreation	676	662	618
Other service activities	605	588	582

¹Preliminary data.