



EMPLOYEES UNDER LABOUR CONTRACT AND AVERAGE WAGES AND SALARIES, SECOND QUARTER OF 2012

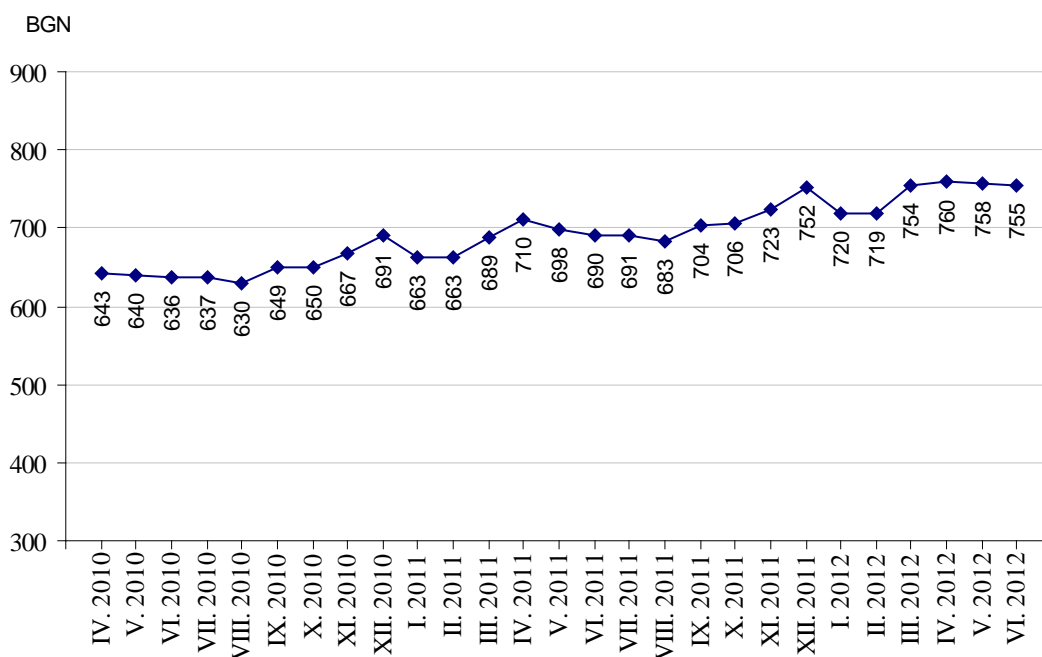
According to the preliminary data of the National Statistical Institute (NSI) at the end of June 2012 the number of employees under labour contract increased by 47.5 thousands or 2.3% as compared to the end of March 2012 and reached 2.15 million. The highest increase was observed in seasonal economic activities “Accommodation and food service activities” - 37.3%, “Agriculture, forestry and fishing”- 7.2% as well as in “Real estate activities” and “Other service activities” - by 6.3%. The highest decrease of employees was recorded in economic activity “Education”- 3.0%.

In the structure of employees by economic activities the biggest relative share of employees was in “Manufacturing” - 22.1% and “Wholesale and retail trade; repair of motor vehicles and motorcycles” - 17.9%.

At the end of June 2012 as compared to June 2011 the number of employees under labour contract declined by 47.5 thousands or 2.2%. The highest decrease in absolute figures was observed in economic activities “Manufacturing” - 18.1 thousands and “Construction” - 7.0 thousands. In percentages the highest decrease was in “Real estate activities” - 10.4% and “Construction” - 5.3%.

The average monthly wages and salaries of the employees under labour contract in April, May and June 2012 was 760, 758 and 755 Levs respectively.

Figure 1. Average wages and salaries by months

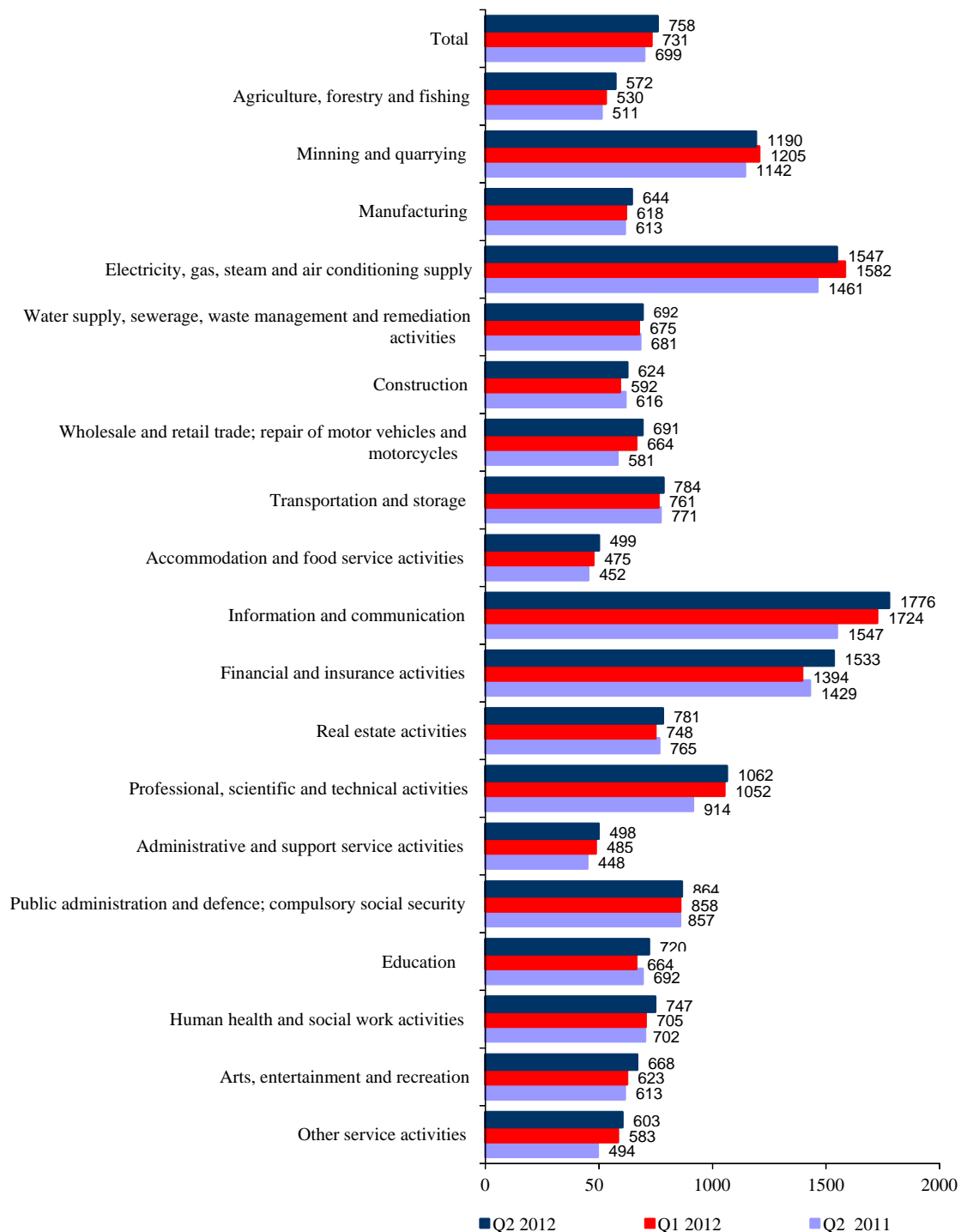




www.nsi.bg

In the second quarter of 2012 in comparison with the first quarter of 2012 the average monthly wages and salaries increased by 3.7% getting 758 Levs. The highest increase in wages and salaries was reported in “Financial and insurance activities” - 10.0%, “Education” - 8.4% and “Agriculture, forestry and fishing” - 7.9%.

Figure 2. Average monthly wages and salaries of the employees under labour contract by economic activities (BGN)





Compared to the second quarter of 2011 the average monthly wages and salaries in the second quarter of 2012 rose by 8.4%. The highest growth rates were recorded in economic activities: “Other services” - 22.1%, “Wholesale and retail trade; repair of motor vehicles and motorcycles” - 18.9% and “Professional, scientific and technical activities” - 16.2%.

The economic activities with the highest wages and salaries in the second quarter of 2012 were:

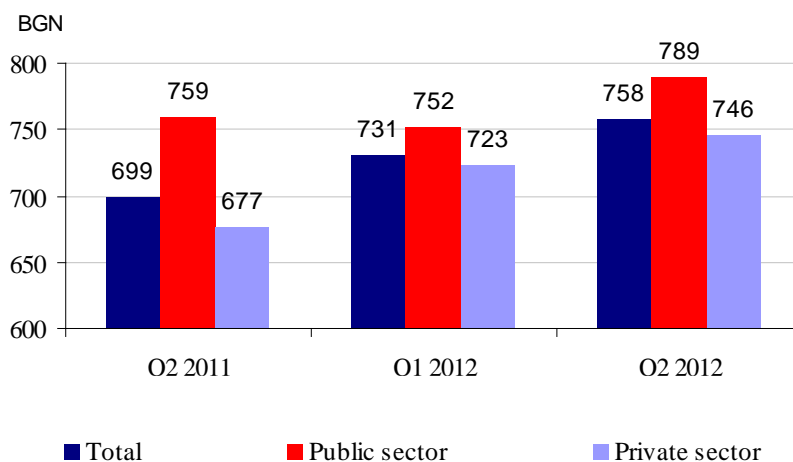
- “Information and communication” - 1 776 Levs
- “Electricity, gas, steam and air conditioning supply” - 1 547 Levs
- “Financial and insurance activities” - 1 533 Levs.

The lowest wages and salaries were recorded in:

- “Administrative and support service activities” - 498 Levs
- “Accommodation and food service activities” - 499 Levs
- “Agriculture, forestry and fishing” - 572 Levs.

In comparison with a year earlier the average monthly wages and salaries in public sector grew by 4.0%, while in private sector - by 10.2%.

Figure 3. Average monthly wages and salaries





Methodological notes

The source of information is the Quarterly Survey on employees, hours worked, wages and salaries, and other expenditures paid by the employer. It is sample survey which main purpose is to make a study of the current state and dynamics of some main aspects of labour market. The sample used for the survey is a stratified random sample without replacement. Stratification criteria used include: economic activity (NACE rev.2), size of the enterprise (according to the number of employees) and regional breakdown (28 districts, NUTS3).

More methodological information on the quarterly survey and data could be found on NSI official web page - <http://www.nsi.bg/otrasalen.php?otr=51>.



Annex

Table 1

Employees under labour contract at the end of the month by economic activities in 2012¹

Economic activity	(Numbers)		
	2012		
	April	May	June
Total	2120508	2137886	2151989
Agriculture, forestry and fishing	59389	60561	61459
Mining and quarrying	24646	24684	24690
Manufacturing	476742	478155	476260
Electricity, gas, steam and air conditioning supply	30559	30587	30691
Water supply, sewerage, waste management and remediation activities	36442	36374	36465
Construction	124741	124654	124529
Wholesale and retail trade; repair of motor vehicles and motorcycles	383488	383487	385410
Transportation and storage	123811	124218	124589
Accommodation and food service activities	90131	102373	113064
Information and communication	63007	62891	63016
Financial and insurance activities	54381	54228	54277
Real estate activities	19289	19664	20497
Professional, scientific and technical activities	60287	60092	60218
Administrative and support service activities	105245	107426	108624
Public administration and defence; compulsory social security	115434	115653	116065
Education	166413	165549	162242
Human health and social work activities	130205	130258	130430
Arts, entertainment and recreation	28133	28671	29618
Other service activities	28165	28361	29845

¹Preliminary data



Table 2

Average monthly wages and salaries of the employees under labour contract by economic activities in 2012¹

(BGN)

Economic activity	2012		
	April	May	June
Total	760	758	755
Agriculture, forestry and fishing	567	538	611
Mining and quarrying	1162	1170	1237
Manufacturing	640	645	647
Electricity, gas, steam and air conditioning supply	1548	1507	1586
Water supply, sewerage, waste management and remediation activities	684	692	700
Construction	626	623	622
Wholesale and retail trade; repair of motor vehicles and motorcycles	690	688	695
Transportation and storage	784	778	790
Accommodation and food service activities	501	505	491
Information and communication	1804	1736	1786
Financial and insurance activities	1684	1427	1488
Real estate activities	786	779	778
Professional, scientific and technical activities	1070	1052	1064
Administrative and support service activities	508	497	488
Public administration and defence; compulsory social security	844	898	849
Education	693	774	692
Human health and social work activities	755	750	735
Arts, entertainment and recreation	654	690	659
Other service activities	559	585	660

¹Preliminary data