



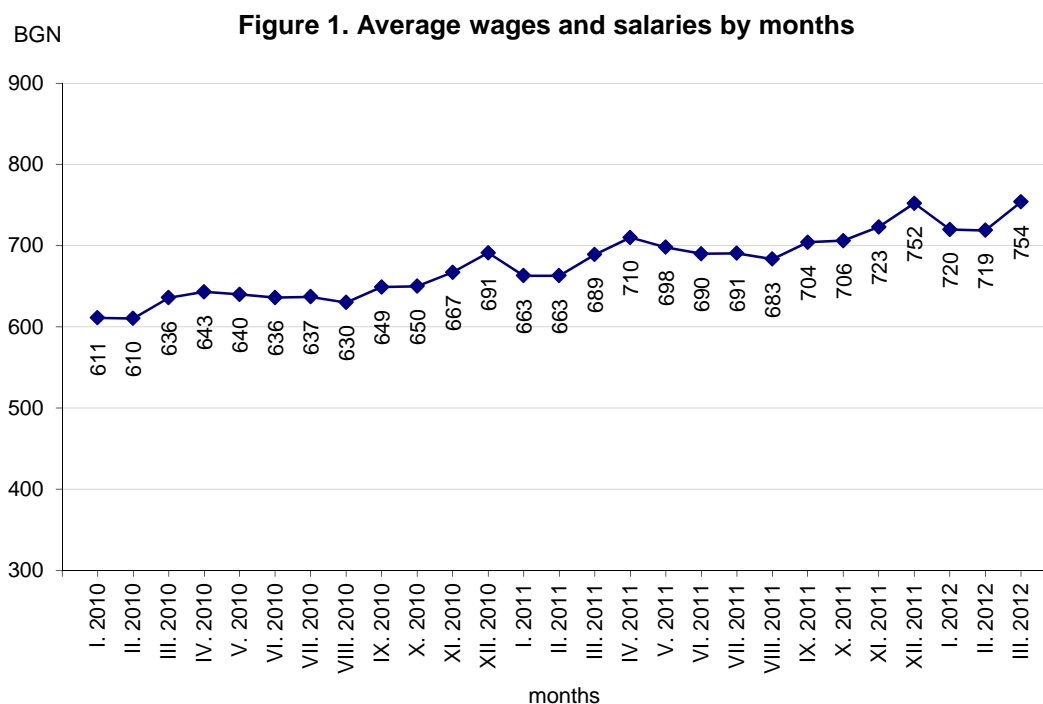
EMPLOYEES UNDER LABOUR CONTRACT AND AVERAGE WAGES AND SALARIES, FIRST QUARTER OF 2012

According to the preliminary data of the National Statistical Institute (NSI) at the end of March 2012 the number of employees under labour contract decreased by 27.9 thousands or 1.3% as compared to the end of December 2011 and reached 2.10 million. The highest decrease was observed in economic activity “Administrative and support service activities”- 4.6%, “Accommodation and food service activities”- 4.0% and “Other service activities” - 3.7%. The highest increase of employees was recorded in economic activity “Water supply, sewerage, waste management and remediation activities”- 6.6%.

In the structure of employees by economic activities the largest share of employees was in “Manufacturing” - 22.5% and “Wholesale and retail trade; repair of motor vehicles and motorcycles” - 18.1%.

At the end of March 2012 as compared to March 2011 the number of employees under labour contract was declined by 44.6 thousands or 2.1%. The highest decrease in absolute figures was observed in economic activities “Manufacturing” - 15.4 thousands, “Wholesale and retail trade; repair of motor vehicles and motorcycles” - 10.5 thousands and “Construction” - 8.5 thousands. In percentages the highest decrease was in “Real estate activities” – 11.9%, “Construction” - 6.5% and “Agriculture, forestry and fishing” - 5.6%.

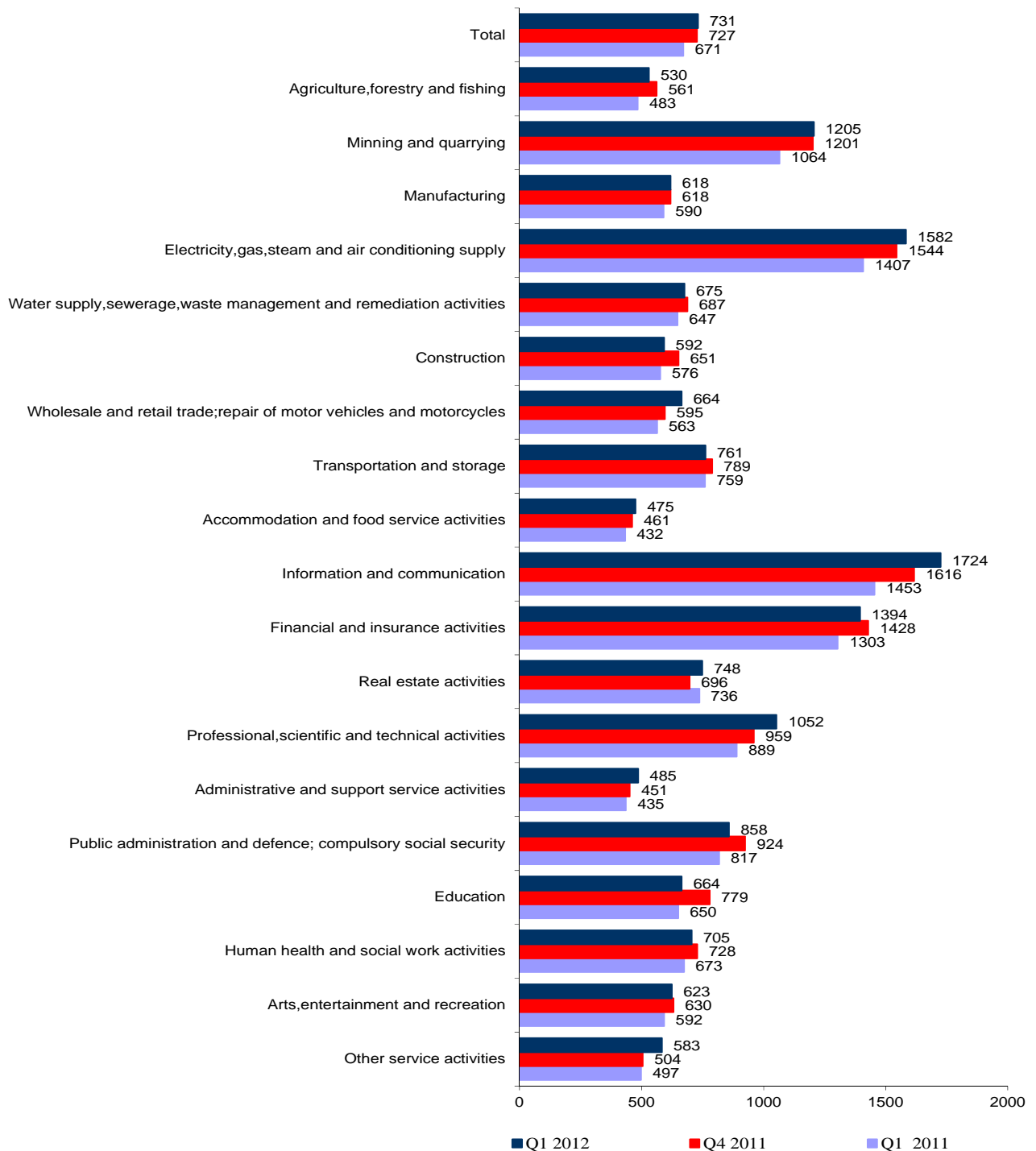
The average monthly wages and salaries of the employees under labour contract in January, February and March 2012 were 720, 719 and 754 Levs respectively.





In the first quarter of 2012 in comparison with the fourth quarter of 2011 the average monthly wages and salaries increased by 0.6% getting 731 Levs. The highest increase in wages and salaries was reported in “Other service activities” - 15.7%, “Wholesale and retail trade; repair of motor vehicles and motorcycles” – 11.6% and “Professional, scientific and technical activities” - 9.7%.

Figure 2. Average monthly wages and salaries of the employees under labour contract by economic activities (BGN)





Compared to the first quarter of 2011 the average monthly wages and salaries in the first quarter of 2012 rose by 8.9%. The highest growth rates were recorded in economic activities: “Information and communication” - 18.7% and “Professional, scientific and technical activities” - 18.3%.

The economic activities with the highest wages and salaries in the first quarter of 2012 were:

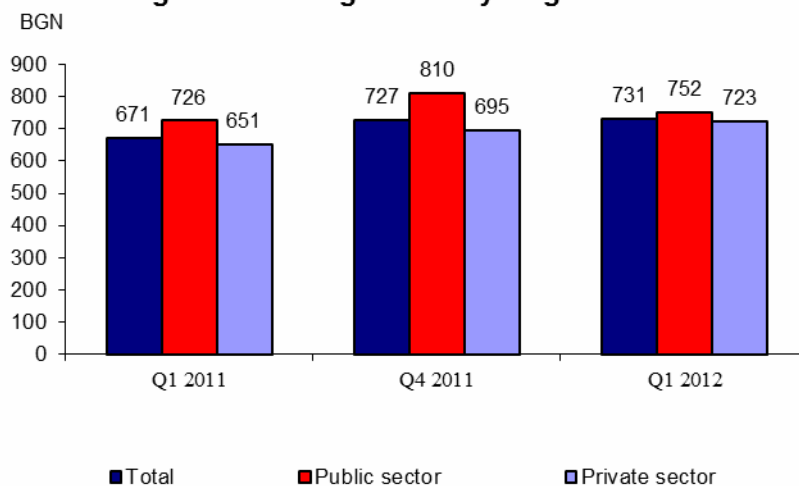
- “Information and communication” - 1 724 Levs;
- “Electricity, gas, steam and air conditioning supply” - 1 582 Levs;
- “Financial and insurance activities” - 1 394 Levs.

The lowest wages and salaries were recorded in:

- “Accommodation and food service activities” - 475 Levs
- “Administrative and support service activities” - 485 Levs
- “Agriculture, forestry and fishing” - 530 Levs.

In comparison with the same quarter of the previous year as basis the average monthly wages and salaries in public sector grew by 3.6%, while in private sector - by 11.1%.

Figure 3. Average monthly wages and salaries





Methodological notes

The source of information is the Quarterly Survey on employees, hours worked, wages and salaries, and other expenditures paid by the employer. It is sample survey which main purpose is to make a study of the current state and dynamics of some main aspects of labour market. The sample used for the survey is a stratified random sample without replacement. Stratification criteria used include: economic activity (NACE rev.2), size of the enterprise (according to the number of employees) and regional breakdown (28 districts, NUTS3).

More methodological information on the quarterly survey and data could be found on NSI official web page - <http://www.nsi.bg/otrasalen.php?otr=51>.



ANNEX

Table 1

Employees under labour contract at the end of the month by economic activities in 2012¹

Economic activity	(Numbers)		
	January	February	March
Total	2115232	2104860	2104458
Agriculture, forestry and fishing	54752	55348	57342
Mining and quarrying	24522	24454	24474
Manufacturing	477951	474238	473768
Electricity, gas, steam and air conditioning supply	30701	30532	30537
Water supply, sewerage, waste management and remediation activities	36431	36163	36322
Construction	121714	119398	120944
Wholesale and retail trade; repair of motor vehicles and motorcycles	384205	383076	380428
Transportation and storage	124393	123573	123430
Accommodation and food service activities	84110	82969	82361
Information and communication	63093	63163	62935
Financial and insurance activities	55318	54735	54377
Real estate activities	19469	19388	19291
Professional, scientific and technical activities	59711	59730	59965
Administrative and support service activities	109466	108539	108927
Public administration and defence; compulsory social security	115741	115764	115890
Education	166944	167208	167282
Human health and social work activities	130265	130010	129744
Arts, entertainment and recreation	28281	28523	28352
Other service activities	28165	28049	28089

¹Preliminary data.



Table 2

Average monthly wages and salaries of the employees under labour contract by economic activities in 2012¹

Economic activity	(BGN)		
	January	February	March
Total	720	719	754
Agriculture, forestry and fishing	510	524	555
Mining and quarrying	1077	1028	1509
Manufacturing	607	604	643
Electricity, gas, steam and air conditioning supply	1648	1550	1548
Water supply, sewerage, waste management and remediation activities	682	672	672
Construction	594	562	619
Wholesale and retail trade; repair of motor vehicles and motorcycles	656	650	686
Transportation and storage	748	770	765
Accommodation and food service activities	473	469	484
Information and communication	1691	1707	1773
Financial and insurance activities	1443	1333	1406
Real estate activities	752	732	759
Professional, scientific and technical activities	1008	1032	1117
Administrative and support service activities	489	475	490
Public administration and defence; compulsory social security	805	914	855
Education	660	658	674
Human health and social work activities	703	691	720
Arts, entertainment and recreation	608	607	653
Other service activities	530	538	681

¹Preliminary data.