



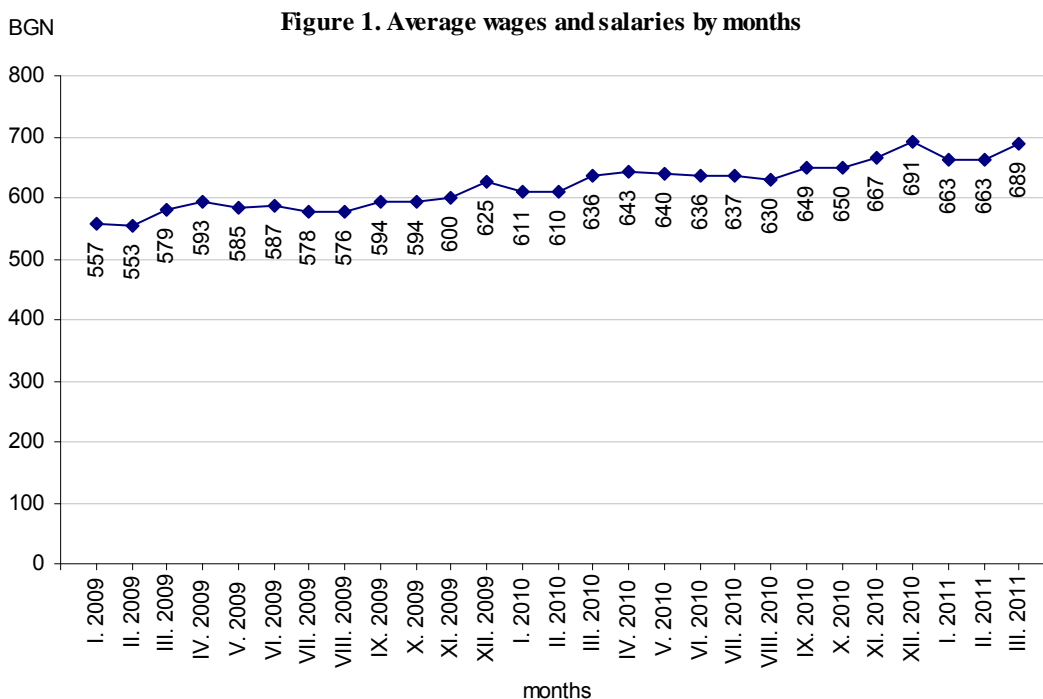
## EMPLOYEES UNDER LABOUR CONTRACT AND AVERAGE WAGES AND SALARIES, FIRST QUARTER OF 2011

According to the preliminary data of the National Statistical Institute (NSI) at the end of March 2011 the number of employees under labour contract decreased by 1.3 thous. or 0.1% as compared to the end of December 2010 and reached 2.15 millions. The highest decrease of employees was in economic activities “Electricity, gas, steam and air conditioning supply”- 3.9%, “Construction” - 3.7% and “Manufacturing” - 2.6%. The highest increase was observed in economic activity “Real estate activities”- 19.0% and “Agriculture, forestry and fishing”- 9.7%.

In the structure of employees by economic activities the biggest relative share of employees was in “Manufacturing” - 22.8% and “Wholesale and retail trade; repair of motor vehicles and motorcycles” - 18.2%.

At the end of March 2011 as compared to March 2010 the number of employees under labour contract was declined by 41 thous. or 1.9%. The highest decrease in absolute figures was observed in economic activities “Manufacturing” - 19.4 thous., “Construction” - 18.8 thous. and “Wholesale and retail trade; repair of motor vehicles and motorcycles” - 12.5 thousands. In percentages the highest decrease was in “Construction” - 12.7%, “Electricity, gas, steam and air conditioning supply” - 7.0% and “Public administration and defence; compulsory social security” - 5.8%.

The average monthly wages and salaries of the employees under labour contract in January, February and March 2011 was 663, 663 and 689 levs respectively.

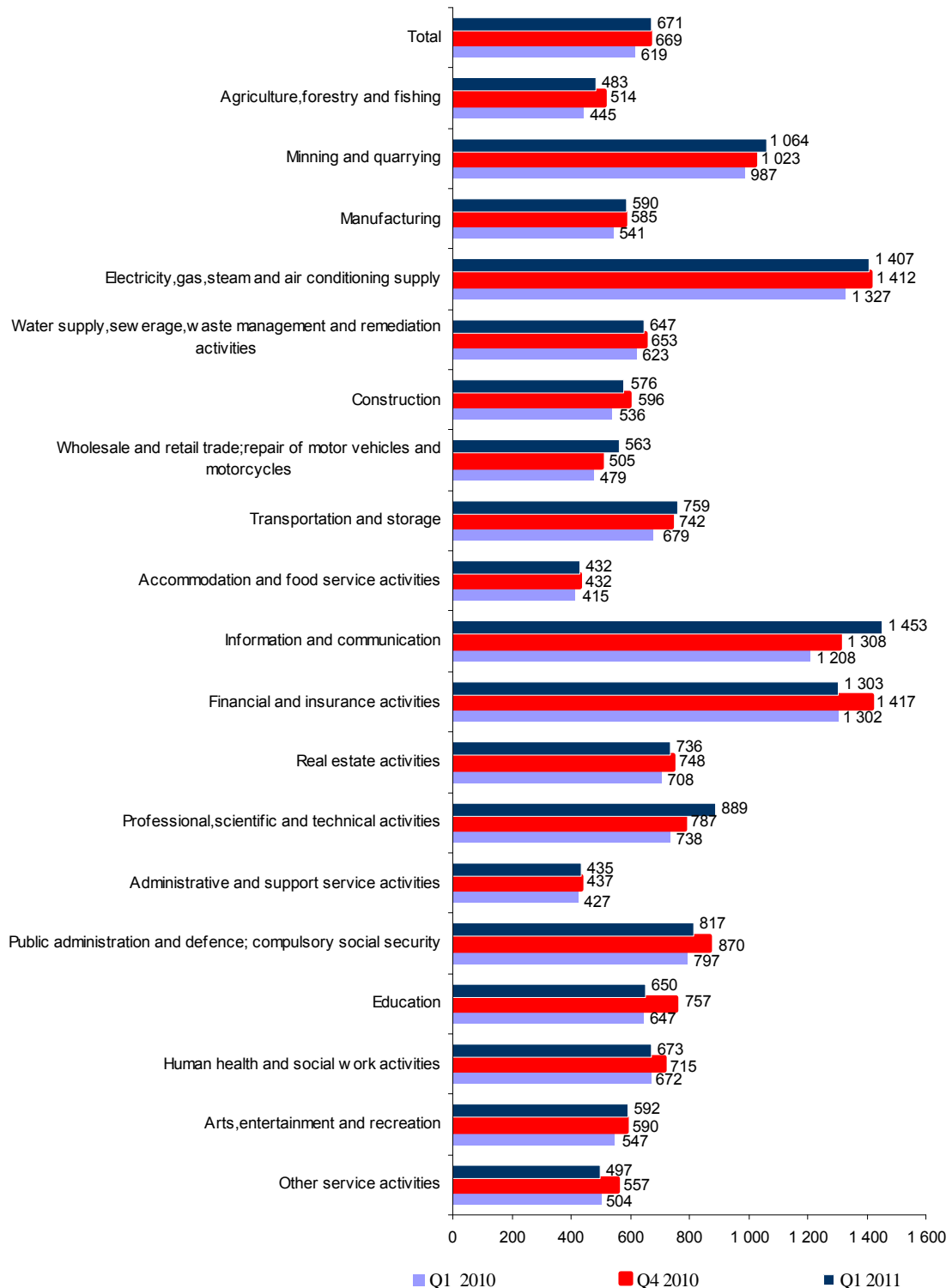




www.nsi.bg

In the first quarter of 2011 in comparison with the fourth quarter of 2010 the average monthly wages and salaries increased by 0.3% getting 671 levs. The highest decrease in wages and salaries was reported in “Professional, scientific and technical activities - 13.0%, “Wholesale and retail trade; repair of motor vehicles and motorcycles” - 11.5% and “Information and communication” - 11.1%.

**Figure 2. Average monthly wages and salaries of the employees under labour contract by economic activities (BGN)**





The highest decrease in average monthly wages and salaries in first quarter of 2011 as compared to the fourth quarter of 2010 was observed in economic activities: “Education” - 14.1% and “Other service activities” - 10.8%.

Compared to the first quarter of 2010 the average monthly wages and salaries in the first quarter of 2011 rose by 8.4%. The highest growth rates were recorded in economic activities: “Professional, scientific and technical activities” - 20.5%’ “Information and communication” - 20.3% and “Wholesale and retail trade; repair of motor vehicles and motorcycles” - 17.5%.

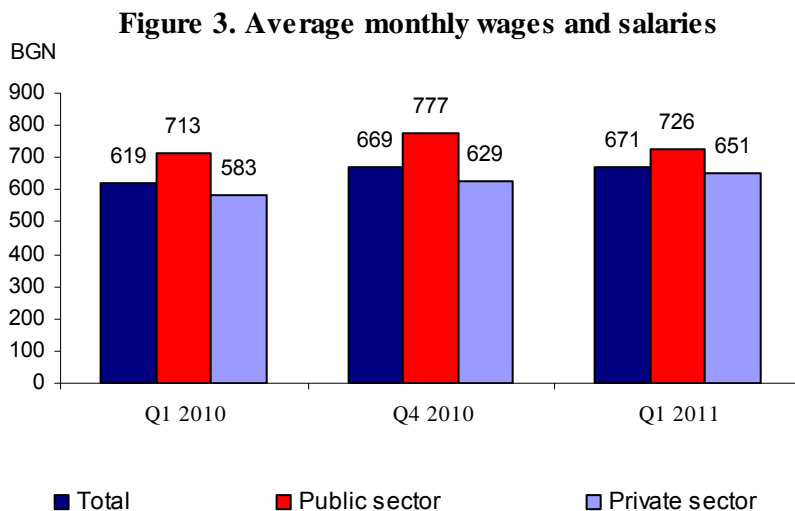
The economic activities with the highest wages and salaries in the first quarter of 2011 were:

- “Information and communication” - 1 453 levs
- “Electricity, gas, steam and air conditioning supply” - 1 407 levs
- “Financial and insurance activities” - 1 303 levs.

The lowest wages and salaries were recorded in:

- “Accommodation and food service activities” - 432 levs
- “Administrative and support service activities” - 435 levs
- “Agriculture, forestry and fishing”- 483 levs.

In comparison with a year earlier the average monthly wages and salaries in public sector grew by 1.8%, while in private sector - by 11.7%.





### **Methodological notes**

The source of information is the Quarterly Survey on employees, hours worked, wages and salaries, and other expenditures paid by the employer. It is sample survey which main purpose is to make a study of the current state and dynamics of some main aspects of labour market. The sample used for the survey is a stratified random sample without replacement. Stratification criteria used include: economic activity (NACE rev.2), size of the enterprise (according to the number of employees) and regional breakdown (28 districts, NUTS3).

More methodological information on the quarterly survey and data could be found on NSI official web page - <http://www.nsi.bg/otrasalen.php?otr=51>.



Annex

**Table 1**

**Employees under labour contract at the end of the month by economic activities in 2011<sup>1</sup>**

Economic activity	(Number)		
	January	February	March
<b>Total</b>	<b>2140610</b>	<b>2142636</b>	<b>2149139</b>
Agriculture, forestry and fishing	56145	57699	60745
Mining and quarrying	24722	24868	24966
Manufacturing	489229	490721	489188
Electricity, gas, steam and air conditioning supply	30935	30889	30868
Water supply, sewerage, waste management and remediation activities	33190	33380	33496
Construction	129499	128834	129402
Wholesale and retail trade; repair of motor vehicles and motorcycles	391935	389651	390914
Transportation and storage	127452	127047	126432
Accommodation and food service activities	84086	83102	83909
Information and communication	58667	59123	59447
Financial and insurance activities	54990	55085	55158
Real estate activities	21313	21880	21887
Professional, scientific and technical activities	61970	62111	62060
Administrative and support service activities	105593	105964	109203
Public administration and defence; compulsory social security	115534	116072	114456
Education	168469	168822	168692
Human health and social work activities	128509	128509	129645
Arts, entertainment and recreation	29292	29506	29175
Other service activities	29080	29373	29496

<sup>1</sup>Preliminary data.



**Table 2**

**Average monthly wages and salaries of the employees under labour contract by economic activities in 2011<sup>1</sup>**

Economic activity	(BGN)		
	January	February	March
<b>Total</b>	<b>663</b>	<b>663</b>	<b>689</b>
Agriculture, forestry and fishing	463	458	524
Mining and quarrying	968	956	1266
Manufacturing	580	579	610
Electricity, gas, steam and air conditioning supply	1351	1432	1440
Water supply, sewerage, waste management and remediation activities	632	648	659
Construction	569	564	594
Wholesale and retail trade; repair of motor vehicles and motorcycles	557	552	579
Transportation and storage	753	771	755
Accommodation and food service activities	432	419	444
Information and communication	1438	1435	1487
Financial and insurance activities	1354	1248	1307
Real estate activities	698	708	801
Professional, scientific and technical activities	861	875	930
Administrative and support service activities	441	433	432
Public administration and defence; compulsory social security	791	847	814
Education	645	647	657
Human health and social work activities	673	655	691
Arts, entertainment and recreation	583	580	612
Other service activities	498	491	503

<sup>1</sup>Preliminary data.