



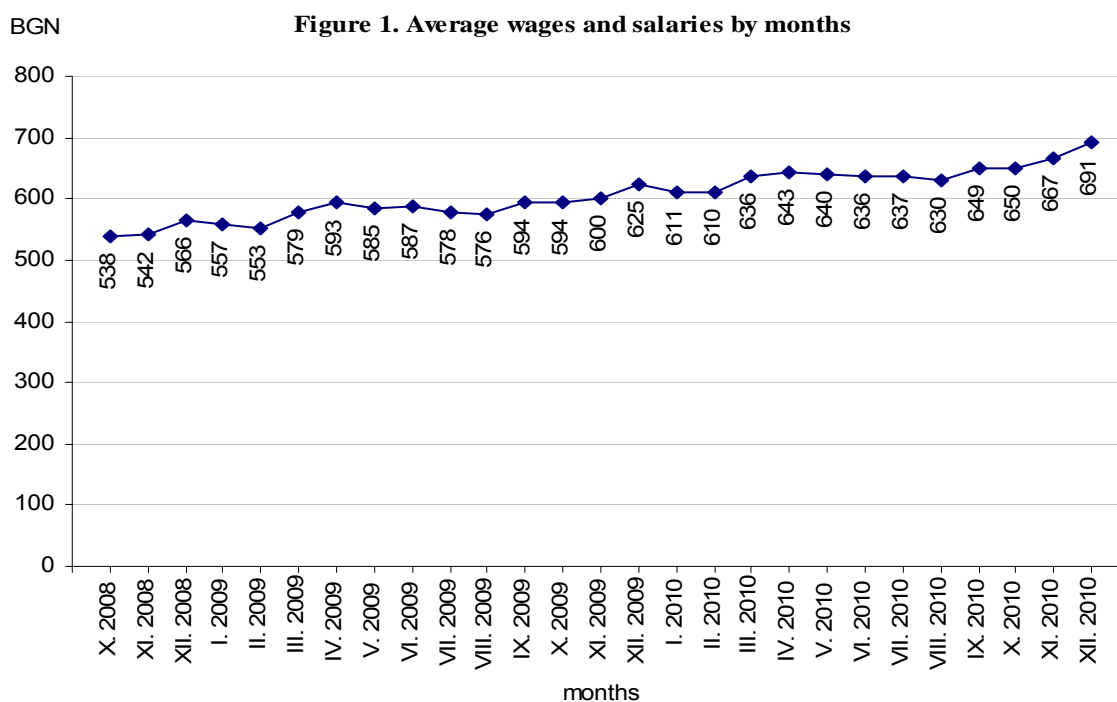
## EMPLOYEES UNDER LABOUR CONTRACT AND AVERAGE WAGES AND SALARIES, FOURTH QUARTER OF 2010

According to the preliminary data of the National Statistical Institute (NSI) at the end of December 2010 the number of employees under labour contract decreased by 50 thousands or 2.3% as compared to the end of September 2010 and reached 2.15 millions. The highest decrease of employees was mainly in seasonal economic activities “Accommodation and food service activities” - 17.4%, “Agriculture, forestry and fishing” - 14.3% and “Construction” - 6.9%. The highest increase was observed in economic activity “Administrative and support service activities”- 6.2%.

In the structure of employees by economic activities the biggest relative share of employees was in “Manufacturing” - 23.4% and “Wholesale and retail trade; repair of motor vehicles and motorcycles” - 18.5%, where the number of employees at the end of December 2010 compared to September 2010 decreased by 2.3 and 1.0% respectively.

At the end of December 2010 as compared to December 2009 the number of employees under labour contract was declined by 106 thousands or 4.7%. The highest decrease in absolute figures was observed in economic activities “Wholesale and retail trade; repair of motor vehicles and motorcycles” - 29 thousands, “Construction”- 26 thousands and “Manufacturing” - 20 thousands. In percentages the highest decrease was in “Construction” - 16.1%, “Accommodation and food service activities” - 12.9% and “Professional, scientific and technical activities” - 10.3%.

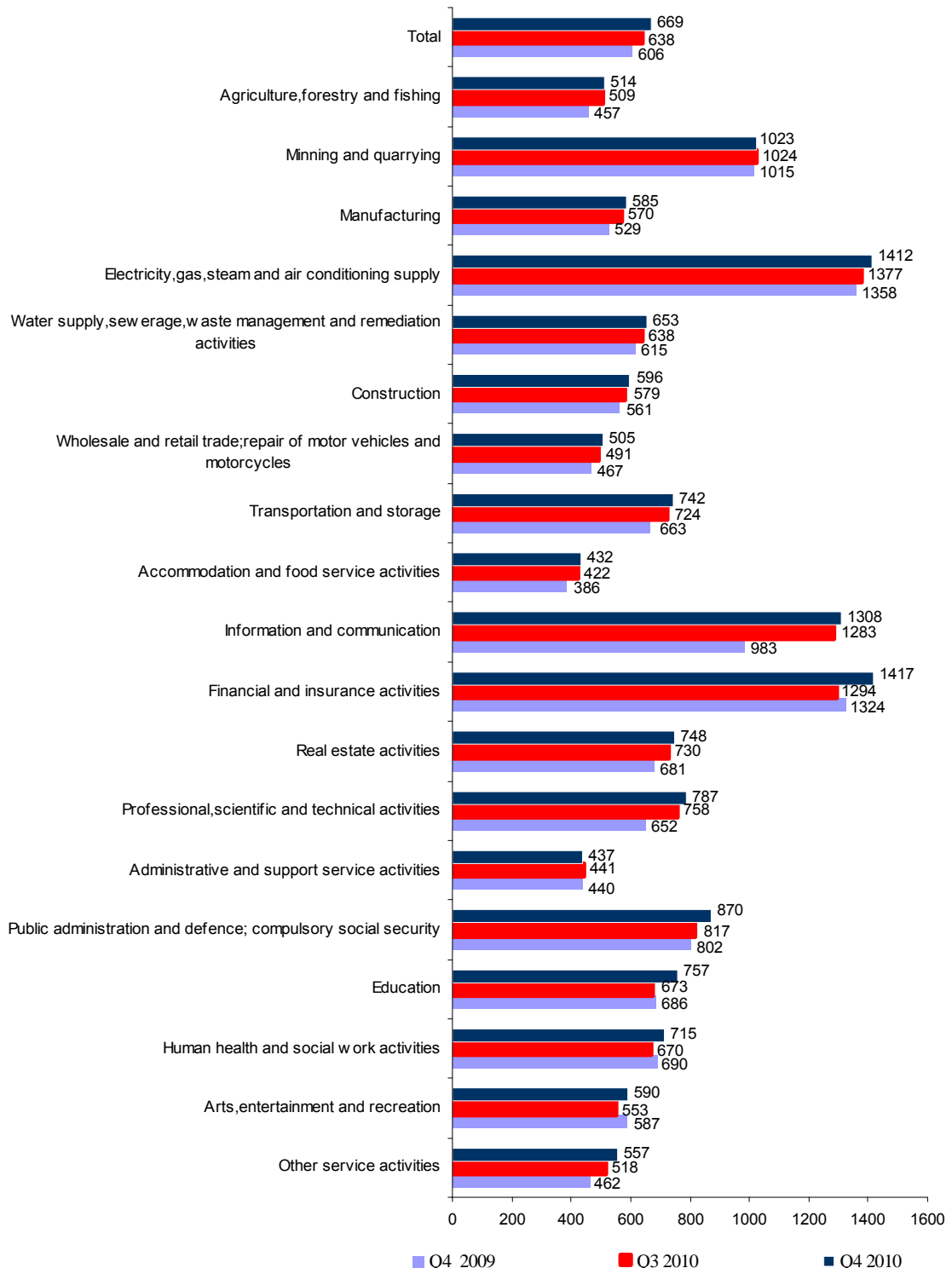
The average monthly wages and salaries of the employees under labour contract in October, November and December 2010 was 650, 667 and 691 levs respectively.





In the fourth quarter of 2010 in comparison with the third quarter of 2010 the average monthly wages and salaries increased by 4.9% getting 669 levs. The highest decrease in wages and salaries was reported in “Education” – 12.5%, “Financial and insurance activities” - 9.5% and “Other service activities” - 7.5%.

**Figure 2. Average monthly wages and salaries of the employees under labour contract by economic activities (BGN)**





Decrease in average monthly wages and salaries in fourth quarter of 2010 as compared to the third quarter of 2010 was observed in economic activities: “Administrative and support service activities” - 0.9% and “Mining and quarrying” - 0.1%.

Compared to the fourth quarter of 2009 the average monthly wages and salaries in the fourth quarter of 2010 rose by 10.4%. The highest growth rates were recorded in economic activities: “Information and communication” - 33.1%, “Professional, scientific and technical activities” - 20.7% and “Other service activities” - 20.6%.

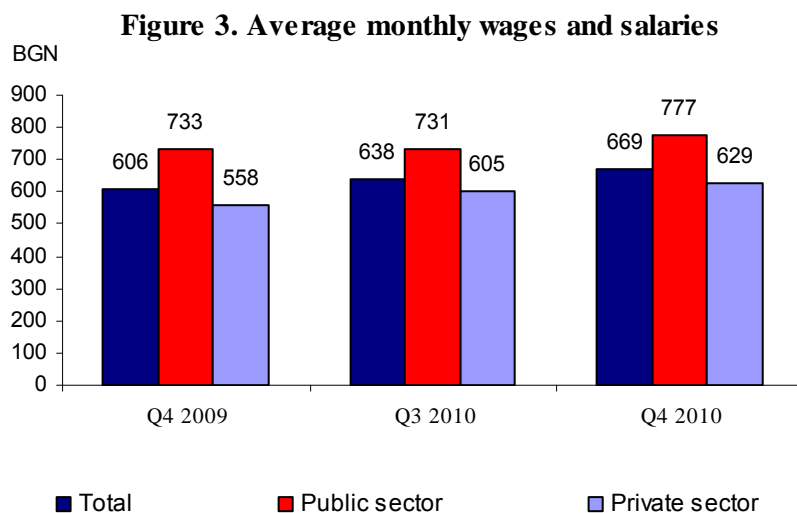
The economic activities with the highest wages and salaries in the fourth quarter of 2010 were:

- “Financial and insurance activities” - 1 417 levs
- “Electricity, gas, steam and air conditioning supply” - 1 412 levs
- “Information and communication” - 1 308 levs

The lowest wages and salaries were recorded in:

- “Accommodation and food service activities” - 432 levs
- “Administrative and support service activities” - 437 levs
- “Wholesale and retail trade; repair of motor vehicles and motorcycles” - 505 levs.

In comparison with a year earlier the average monthly wages and salaries in public sector grew by 6.0%, while in private sector - by 12.7%.





### **Methodological notes**

The source of information is the Quarterly Survey on employees, hours worked, wages and salaries, and other expenditures paid by the employer. It is sample survey which main purpose is to make a study of the current state and dynamics of some main aspects of labour market. The sample used for the survey is a stratified random sample without replacement. Stratification criteria used include: economic activity (NACE rev.2), size of the enterprise (according to the number of employees) and regional breakdown (28 districts, NUTS3).

More methodological information on the quarterly survey and data could be found on NSI official web page - <http://www.nsi.bg/otrasalen.php?otr=51>.



Annex

**Table 1**

**Employees under labour contract at the end of the month by economic activities in 2010<sup>1</sup>**

Economic activity	(Numbers)		
	October	November	December
<b>Total</b>	<b>2180432</b>	<b>2170241</b>	<b>2147792</b>
Agriculture, forestry and fishing	62717	60081	55351
Mining and quarrying	25781	25778	25471
Manufacturing	511222	509205	502065
Electricity, gas, steam and air conditioning supply	32555	32383	32132
Water supply, sewerage, waste management and remediation activities	32263	32327	32258
Construction	141923	139388	134305
Wholesale and retail trade; repair of motor vehicles and motorcycles	400901	400371	397804
Transportation and storage	127124	126581	125918
Accommodation and food service activities	84869	81667	81681
Information and communication	56695	56773	56534
Financial and insurance activities	52577	52726	52748
Real estate activities	18285	18228	18399
Professional, scientific and technical activities	62012	61780	61510
Administrative and support service activities	104736	104996	104933
Public administration and defence; compulsory social security	117513	117779	117314
Education	166461	167205	166142
Human health and social work activities	127361	127726	127453
Arts, entertainment and recreation	27226	27065	27606
Other service activities	28211	28182	28168

<sup>1</sup>Preliminary data.



**Table 2**

**Average monthly wages and salaries of the employees under labour contract by economic activities in 2010<sup>1</sup>**

(BGN)

Economic activity	October	November	December
<b>Total</b>	<b>650</b>	<b>667</b>	<b>691</b>
Agriculture, forestry and fishing	494	528	521
Mining and quarrying	953	979	1137
Manufacturing	576	583	597
Electricity, gas, steam and air conditioning supply	1355	1363	1518
Water supply, sewerage, waste management and remediation activities	627	643	689
Construction	591	610	587
Wholesale and retail trade; repair of motor vehicles and motorcycles	495	500	519
Transportation and storage	714	747	764
Accommodation and food service activities	427	428	442
Information and communication	1263	1298	1363
Financial and insurance activities	1292	1422	1535
Real estate activities	730	732	780
Professional, scientific and technical activities	778	758	824
Administrative and support service activities	428	430	453
Public administration and defence; compulsory social security	836	899	874
Education	740	733	796
Human health and social work activities	698	730	718
Arts, entertainment and recreation	584	583	604
Other service activities	522	544	605

<sup>1</sup>Preliminary data.