

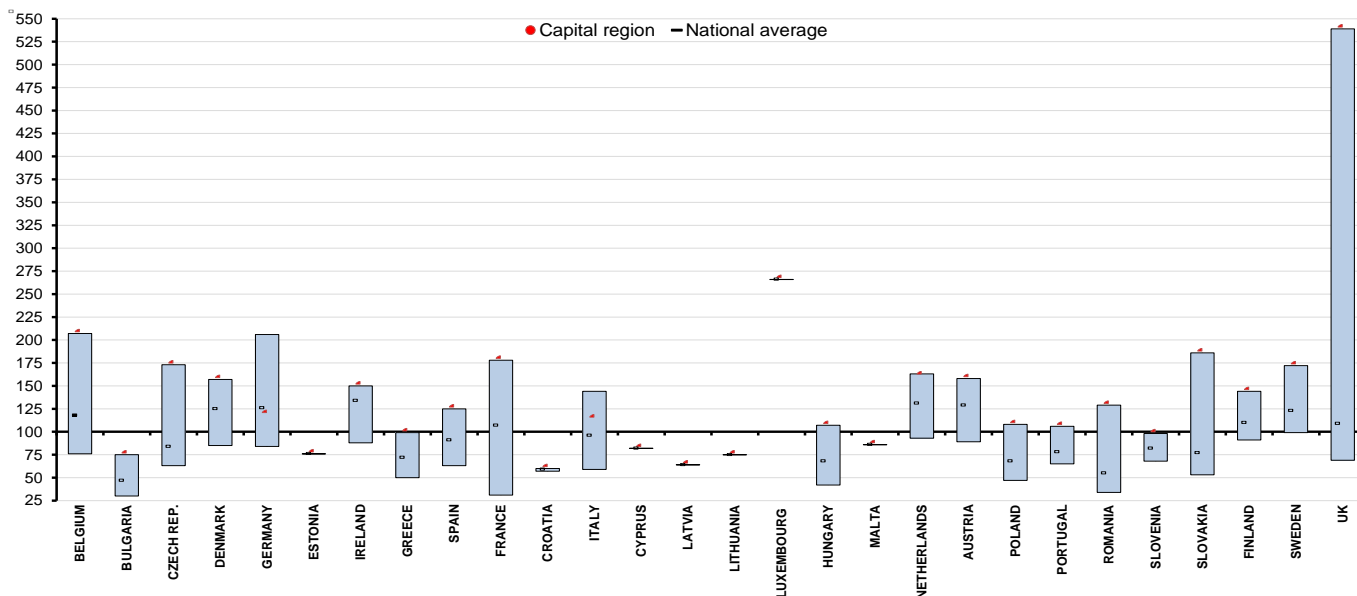
2014 GDP per capita in 276 EU regions

**Twenty-one regions below half of the EU average...
...and five regions over double the average**

In 2014, regional GDP per capita, expressed in terms of purchasing power standards, ranged from 30% of the European Union (EU) average in the Bulgarian region of **Severozapaden**, to 539% of the average in **Inner London - West** in the United Kingdom.

This information is taken from data released by **Eurostat, the statistical office of the European Union.**

Regional GDP per capita by EU Member State in 2014
in PPS, EU28 = 100



The bar shows for each Member State the range from the region with the lowest value to that with the highest value.

The leading regions in the ranking of regional GDP per capita in 2014, after **Inner London - West** in the United Kingdom (539% of the average), were the **Grand Duchy of Luxembourg** (266%), **Bruxelles/Brussel** in Belgium (207%), **Hamburg** in Germany (206%), **Inner London - East** in the United Kingdom (204%) and **Bratislava** in Slovakia (186%).

There were 21 regions with GDP per capita 50% or more above the EU average: five were in Germany, three each in the Netherlands and the United Kingdom, two in Austria, one each in Belgium, the Czech Republic, Denmark, Ireland, France, Slovakia and Sweden, as well as the Grand Duchy of Luxembourg.

After **Severozapaden** in Bulgaria (30%) the lowest regions in the ranking were **Mayotte** in France (31%), **Yuzhen tsentralen** (32%) and **Severen tsentralen** (34%) in Bulgaria and **Nord-Est** in Romania (34%).

Among the 21 regions with GDP per capita below 50% of the EU average, five each were in Bulgaria, Poland and Romania, four in Hungary, and one each in Greece and France.

It should be noted, however, that in some regions the GDP per capita figures can be significantly influenced by commuter flows. Net commuter inflows in these regions push up production to a level that could not be achieved by the resident active population on its own. There is a corresponding effect in regions with commuter outflows.

Regional GDP per capita in the EU in 2014
(in PPS, EU28 = 100)

The highest:			The lowest:		
1	Inner London - West (UK)*	539	1	Severozapaden (BG)	30
2	Luxembourg (LU)*	266	2	Mayotte (FR)	31
3	Bruxelles-Cap. / Brussel Hfdst. (BE)*	207	3	Yuzhen tsentralen (BG)	32
4	Hamburg (DE)	206	4	Severen tsentralen (BG)	34
5	Inner London - East (UK)	204	4	Nord-Est (RO)	34
6	Bratislavský kraj (SK)*	186	6	Severoiztochen (BG)	39
7	Oberbayern (DE)	179	6	Yugoiztochen (BG)	39
8	Île de France (FR)*	178	8	Sud-Vest Oltenia (RO)	41
9	Praha (CZ)*	173	9	Észak-Magyarország (HU)	42
10	Stockholm (SE)*	172	10	Észak-Alföld (HU)	43
11	North Eastern Scotland (UK)	164	10	Sud-Muntenia (RO)	43
12	Groningen (NL)	163	12	Dél-Dunántúl (HU)	45
12	Darmstadt (DE)	163	13	Lubelskie (PL)	47
14	Stuttgart (DE)	162	13	Dél-Alföld (HU)	47
15	Noord-Holland (NL)*	161	15	Nord-Vest (RO)	48
15	Bremen (DE)	161	15	Podkarpackie (PL)	48
17	Wien (AT)*	158	15	Warmińsko-Mazurskie (PL)	48
18	Hovedstaden (DK)*	157	18	Podlaskie (PL)	49
19	Utrecht (NL)	154	18	Świętokrzyskie (PL)	49
20	Salzburg (AT)	152	20	Sud-Est (RO)	50
21	Southern & Eastern (IE)*	150	20	Anatoliki Makedonia, Thraki (EL)	50

* Capital region

Geographical information

These data are based on the **Nomenclature of Territorial Units for Statistics (NUTS) 2013** as set out in Commission Regulation (EU) No 1319/2013 of 9 December 2013. NUTS 2013 provides a uniform, consistent breakdown of territorial units for the production of regional statistics for the EU.

Level 2 of the nomenclature has 276 regions: Belgium (11), Bulgaria (6), the Czech Republic (8), Denmark (5), Germany (38), Ireland (2), Greece (13), Spain (19), France (27), Croatia (2), Italy (21), Hungary (7), the Netherlands (12), Austria (9), Poland (16), Portugal (7), Romania (8), Slovenia (2), Slovakia (4), Finland (5), Sweden (8) and the United Kingdom (40). Estonia, Cyprus, Latvia, Lithuania, Luxembourg and Malta are all considered as single regions at NUTS 2 level.

Methods and definitions

GDP, and thus **GDP per capita**, provides a measure of the total economic activity in a region. It may be used to compare the degree of economic development of regions. GDP does not measure the income ultimately available to private households in a region.

The **PPS** (purchasing power standard) is an artificial currency that takes into account differences in national price levels. This unit allows meaningful volume comparisons of economic indicators over countries. Aggregates expressed in PPS are derived by dividing aggregates in current prices and national currency by the respective Purchasing Power Parity (PPP).

For more information

Overview of [NUTS](#)


Eurostat manual on [regional accounts methods](#)

Eurostat [website section](#) dedicated to regional statistics

The data can be found [here](#).

Issued by: **Eurostat Press Office**


Tim ALLEN
Tel: +352-4301-33 444
eurostat-pressoffice@ec.europa.eu

 ec.europa.eu/eurostat/

For further information about the data:

Andreas KRUEGER
Tel: +352-4301-36 397
andreas.krueger@ec.europa.eu

 [@EU_Eurostat](https://twitter.com/EU_Eurostat)

 **Media requests:** Eurostat media support / Tel: +352-4301-33 408 / eurostat-mediasupport@ec.europa.eu

Regional GDP in the European Union, 2014

Region (NUTS 2013)	GDP €million	GDP per capita €	GDP million PPS	GDP per capita PPS	GDP per capita PPS, EU28=100
EU	13 959 739	27 500	13 959 739	27 500	100
BELGIUM	400 643	35 900	362 995	32 500	118
<i>Bruxelles-Cap. / Brussel Hfdst.</i>	<i>73 381</i>	<i>62 900</i>	<i>66 486</i>	<i>57 000</i>	<i>207</i>
<i>Vlaams Gewest</i>	<i>233 433</i>	<i>36 400</i>	<i>211 497</i>	<i>33 000</i>	<i>120</i>
Prov. Antwerpen	75 418	41 800	68 331	37 900	138
Prov. Limburg (BE)	25 507	29 800	23 110	27 000	98
Prov. Oost-Vlaanderen	48 210	32 800	43 680	29 700	108
Prov. Vlaams Brabant	43 230	39 000	39 168	35 300	129
Prov. West-Vlaanderen	41 067	35 000	37 208	31 700	115
<i>Région Wallonne</i>	<i>93 551</i>	<i>26 200</i>	<i>84 760</i>	<i>23 700</i>	<i>86</i>
Prov. Brabant Wallon	15 484	39 500	14 029	35 800	130
Prov. Hainaut	30 797	23 100	27 903	21 000	76
Prov. Liège	28 638	26 200	25 947	23 800	87
Prov. Luxembourg (BE)	6 425	23 200	5 821	21 000	76
Prov. Namur	12 207	25 200	11 060	22 800	83
<i>Extra-regio*</i>	<i>278</i>		<i>252</i>		
BULGARIA	42 751	5 900	92 498	12 800	47
<i>Severna i Yugoiztochna Bulgaria</i>	<i>16 677</i>	<i>4 600</i>	<i>36 084</i>	<i>9 900</i>	<i>36</i>
Severozapaden	3 033	3 800	6 563	8 200	30
Severen tsentralen	3 558	4 300	7 697	9 300	34
Severoiztochen	4 759	5 000	10 298	10 800	39
Yugoiztochen	5 327	5 000	11 526	10 800	39
<i>Yugozapadna i Yuzhna Tsentralna Bulgaria</i>	<i>26 074</i>	<i>7 300</i>	<i>56 414</i>	<i>15 800</i>	<i>57</i>
Yugozapaden	20 238	9 500	43 788	20 600	75
Yuzhen tsentralen	5 835	4 000	12 626	8 700	32
CZECH REPUBLIC	154 739	14 700	244 249	23 200	84
Praha	37 673	30 100	59 465	47 500	173
Střední Čechy	17 559	13 400	27 717	21 200	77
Jihozápad	15 959	13 200	25 191	20 800	76
Severozápad	12 288	10 900	19 397	17 200	63
Severovýchod	18 296	12 100	28 880	19 200	70
Jihovýchod	23 093	13 700	36 451	21 700	79
Střední Morava	14 910	12 200	23 535	19 300	70
Moravskoslezsko	14 960	12 300	23 614	19 400	70
DENMARK	260 582	46 200	193 153	34 200	125
Hovedstaden	102 153	58 100	75 719	43 000	157
Sjælland	25 875	31 600	19 179	23 400	85
Syddanmark	49 785	41 300	36 903	30 700	112
Midtjylland	52 923	41 300	39 228	30 600	112
Nordjylland	23 028	39 600	17 069	29 300	107
<i>Extra-regio*</i>	<i>6 818</i>		<i>5 054</i>		

* **Extra-regio:** The extra-regio territory is made up of parts of the economic territory of a country which cannot be assigned to a single region. It consists of the national air-space, territorial waters and the continental shelf lying in international waters over which the country enjoys exclusive rights, territorial exclaves, deposits of oil, natural gas etc. worked by resident units.

Until 2011, the gross value added (GVA) produced in the extra-regio was allocated pro-rata to the inhabited regions of the country concerned. The order of magnitude of the extra-regio GVA depends in particular on the resource endowment in terms of natural gas and oil. For EU Member States the share of extra-regio GVA varies typically from almost zero to about 2.5% of total GVA at national level. In 2011, Member States and the European Commission agreed to give countries the possibility to calculate regional GDP also for the extra-regio. The resulting GDP is available only in absolute values, because the extra-regio territory by definition does not have a resident population.

Member States are entitled, but not obliged to calculate GDP for the extra-regio. In the table extra-regio GDP appears only for those Member States which decided to make use of this possibility.

Regional GDP in the European Union, 2014

Region (NUTS 2013)	GDP €million	GDP per capita €	GDP million PPS	GDP per capita PPS	GDP per capita PPS, EU28=100
EU	13 959 739	27 500	13 959 739	27 500	100
GERMANY	2 915 650	36 000	2 795 700	34 500	126
Baden-Württemberg	440 057	41 200	421 954	39 500	144
Stuttgart	184 808	46 300	177 205	44 400	162
Karlsruhe	109 149	40 200	104 658	38 600	140
Freiburg	76 468	35 000	73 322	33 600	122
Tübingen	69 632	38 900	66 767	37 300	136
Bayern	524 064	41 400	502 504	39 700	145
Oberbayern	229 930	51 200	220 471	49 100	179
Niederbayern	41 522	34 800	39 814	33 400	121
Oberpfalz	39 687	36 700	38 054	35 200	128
Oberfranken	34 513	32 700	33 094	31 300	114
Mittelfranken	66 333	38 800	63 604	37 200	135
Unterfranken	47 170	36 300	45 229	34 800	127
Schwaben	64 909	35 800	62 238	34 300	125
Berlin	117 750	34 200	112 906	32 800	119
Brandenburg	62 150	25 300	59 593	24 300	88
Bremen	30 360	46 000	29 111	44 100	161
Hamburg	103 566	59 000	99 305	56 600	206
Hessen	251 517	41 400	241 169	39 700	145
Darmstadt	178 983	46 600	171 620	44 700	163
Gießen	32 016	31 200	30 699	29 900	109
Kassel	40 518	33 800	38 851	32 400	118
Mecklenburg-Vorpommern	38 634	24 200	37 045	23 200	84
Niedersachsen	254 659	32 600	244 182	31 300	114
Braunschweig	61 663	39 100	59 126	37 500	136
Hannover	73 047	34 700	70 042	33 300	121
Lüneburg	42 256	25 200	40 518	24 200	88
Weser-Ems	77 693	31 700	74 496	30 400	111
Nordrhein-Westfalen	627 219	35 600	601 415	34 200	124
Düsseldorf	196 222	38 500	188 149	36 900	134
Köln	164 845	37 900	158 063	36 400	132
Münster	80 420	31 200	77 112	29 900	109
Detmold	70 827	34 900	67 913	33 500	122
Arnsberg	114 906	32 300	110 179	31 000	113
Rheinland-Pfalz	128 135	32 000	122 863	30 700	112
Koblenz	45 034	30 500	43 182	29 300	107
Trier	14 789	28 400	14 181	27 200	99
Rheinhausen-Pfalz	68 312	34 000	65 501	32 600	119
Saarland	33 685	34 000	32 299	32 600	119
Sachsen	109 097	26 900	104 609	25 800	94
Dresden	43 186	27 100	41 409	26 000	95
Chemnitz	36 741	25 100	35 229	24 000	87
Leipzig	29 170	29 400	27 970	28 200	103
Sachsen-Anhalt	55 845	24 900	53 547	23 900	87
Schleswig-Holstein	84 364	29 900	80 894	28 700	104
Thüringen	54 549	25 300	52 305	24 200	88
ESTONIA	19 963	15 200	27 526	20 900	76
IRELAND	189 046	41 000	169 646	36 800	134
Border, Midland & Western	33 186	27 100	29 781	24 300	88
Southern & Eastern	155 860	46 000	139 865	41 300	150
GREECE	177 559	16 200	217 176	19 900	72
Voreia Ellada	38 708	12 400	47 345	15 100	55
Anatoliki Makedonia, Thraki	6 820	11 200	8 341	13 700	50
Kentriki Makedonia	23 859	12 500	29 183	15 300	56
Dytiki Makedonia	4 125	14 800	5 045	18 100	66
Ipeiros	3 904	11 400	4 776	14 000	51
Kentriki Ellada	35 748	12 900	43 724	15 800	57
Thessalia	9 085	12 300	11 112	15 100	55
Ionia Nisia	3 137	15 100	3 836	18 400	67
Dytiki Ellada	8 181	12 100	10 007	14 800	54
Stereia Ellada	7 734	13 800	9 460	16 900	61
Peloponnisos	7 611	13 000	9 309	15 900	58
Attiki	85 579	22 200	104 673	27 100	99
Nisia Aigaiou, Kriti	17 524	15 000	21 434	18 400	67
Voreio Aigaio	2 545	12 800	3 113	15 700	57
Notio Aigaio	6 045	18 000	7 394	22 000	80
Kriti	8 934	14 100	10 927	17 300	63

Regional GDP in the European Union, 2014

Region (NUTS 2013)	GDP €million	GDP per capita €	GDP million PPS	GDP per capita PPS	GDP per capita PPS, EU28=100
EU	13 959 739	27 500	13 959 739	27 500	100
SPAIN	1 041 160	22 400	1 163 000	25 000	91
<i>Noroeste</i>	86 515	19 800	96 639	22 100	80
Galicia	53 858	19 700	60 160	22 000	80
Principado de Asturias	20 793	19 700	23 226	22 000	80
Cantabria	11 864	20 200	13 252	22 600	82
<i>Noreste</i>	121 571	27 400	135 798	30 600	111
País Vasco	63 394	29 300	70 812	32 700	119
Comunidad Foral de Navarra	17 623	27 700	19 685	30 900	113
La Rioja	7 727	24 600	8 631	27 500	100
Aragón	32 828	24 700	36 669	27 600	100
<i>Comunidad de Madrid</i>	196 118	30 700	219 068	34 300	125
<i>Centro (ES)</i>	105 718	18 700	118 089	20 900	76
Castilla y León	52 348	21 100	58 473	23 500	86
Castilla-La Mancha	36 463	17 600	40 730	19 700	72
Extremadura	16 907	15 500	18 885	17 300	63
<i>Este</i>	320 763	23 800	358 299	26 600	97
Cataluña	197 004	26 600	220 058	29 700	108
Comunidad Valenciana	97 430	19 700	108 831	22 000	80
Illes Balears	26 329	23 500	29 410	26 200	96
<i>Sur</i>	168 893	16 800	188 658	18 800	69
Andalucía	139 099	16 600	155 377	18 500	67
Región de Murcia	26 808	18 300	29 945	20 500	74
Ciudad Autónoma de Ceuta	1 580	18 700	1 765	20 900	76
Ciudad Autónoma de Melilla	1 406	16 700	1 571	18 700	68
<i>Canarias</i>	40 753	19 200	45 522	21 500	78
<i>Extra-regio*</i>	830		927		
FRANCE	2 132 449	32 200	1 937 806	29 300	107
<i>Île de France</i>	649 101	53 900	589 853	49 000	178
<i>Bassin parisien</i>	287 055	26 500	260 854	24 100	88
Champagne-Ardenne	37 811	28 300	34 360	25 700	94
Picardie	45 769	23 700	41 592	21 600	78
Haute-Normandie	52 164	28 100	47 402	25 600	93
Centre	68 883	26 700	62 596	24 300	88
Basse-Normandie	38 084	25 800	34 608	23 400	85
Bourgogne	44 344	27 100	40 296	24 600	90
<i>Nord-Pas-de-Calais</i>	104 461	25 700	94 926	23 400	85
<i>Est</i>	138 711	25 700	126 050	23 400	85
Lorraine	56 299	24 000	51 160	21 800	79
Alsace	54 904	29 300	49 892	26 700	97
Franche-Comté	27 509	23 300	24 998	21 200	77
<i>Ouest</i>	241 581	27 500	219 530	25 000	91
Pays de la Loire	106 572	28 800	96 845	26 200	95
Bretagne	87 752	26 700	79 742	24 300	88
Poitou-Charentes	47 257	26 300	42 944	23 900	87
<i>Sud-ouest</i>	197 725	28 000	179 678	25 400	93
Aquitaine	93 061	27 800	84 567	25 300	92
Midi-Pyrénées	86 860	29 200	78 932	26 500	96
Limousin	17 804	24 200	16 179	22 000	80
<i>Centre-est</i>	242 288	30 900	220 173	28 100	102
Rhône-Alpes	207 243	32 000	188 326	29 100	106
Auvergne	35 046	25 800	31 847	23 400	85
<i>Méditerranée</i>	229 252	28 400	208 326	25 800	94
Languedoc-Roussillon	67 451	24 300	61 294	22 100	81
Provence-Alpes-Côte d'Azur	153 031	30 800	139 062	28 000	102
Corse	8 771	27 000	7 970	24 500	89
<i>Départements d'Outre-Mer</i>	42 274	20 000	38 416	18 200	66
Guadeloupe	8 928	22 100	8 113	20 100	73
Martinique	8 850	23 300	8 042	21 200	77
Guyane	4 469	17 700	4 061	16 000	58
La Réunion	17 926	21 100	16 290	19 200	70
Mayotte	2 101	9 300	1 909	8 400	31
CROATIA	43 020	10 200	68 233	16 100	59
Jadranska Hrvatska	13 731	9 800	21 779	15 500	57
Kontinentalna Hrvatska	29 288	10 300	46 454	16 400	60

Regional GDP in the European Union, 2014

Region (NUTS 2013)	GDP €million	GDP per capita €	GDP million PPS	GDP per capita PPS	GDP per capita PPS, EU28=100
EU	13 959 739	27 500	13 959 739	27 500	100
ITALY	1 613 859	26 500	1 604 114	26 400	96
<i>Nord Ovest</i>	<i>522 032</i>	<i>32 400</i>	<i>518 880</i>	<i>32 200</i>	<i>117</i>
Piemonte	122 936	27 700	122 194	27 600	100
Valle d'Aosta / Vallée d'Aoste	4 714	36 700	4 685	36 500	133
Liguria	45 767	28 800	45 490	28 700	104
Lombardia	348 615	34 900	346 510	34 700	126
<i>Nord Est</i>	<i>364 829</i>	<i>31 300</i>	<i>362 626</i>	<i>31 100</i>	<i>113</i>
Provincia Autonoma di Bolzano / Bozen	20 649	39 900	20 524	39 700	144
Provincia Autonoma di Trento	18 217	33 900	18 107	33 700	123
Veneto	147 498	29 900	146 607	29 800	108
Friuli-Venezia Giulia	34 325	27 900	34 118	27 800	101
Emilia-Romagna	144 140	32 400	143 270	32 200	117
<i>Centro (IT)</i>	<i>355 045</i>	<i>29 400</i>	<i>352 901</i>	<i>29 200</i>	<i>106</i>
Toscana	108 154	28 800	107 501	28 700	104
Umbria	21 614	24 100	21 483	24 000	87
Marche	39 541	25 500	39 303	25 300	92
Lazio	185 737	31 600	184 615	31 400	114
<i>Sud</i>	<i>249 955</i>	<i>17 700</i>	<i>248 446</i>	<i>17 500</i>	<i>64</i>
Abruzzo	30 972	23 200	30 785	23 100	84
Molise	6 483	20 600	6 444	20 500	75
Campania	98 381	16 800	97 787	16 700	61
Puglia	70 973	17 400	70 545	17 200	63
Basilicata	11 052	19 100	10 985	19 000	69
Calabria	32 094	16 200	31 900	16 100	59
<i>Isole</i>	<i>120 387</i>	<i>17 800</i>	<i>119 660</i>	<i>17 700</i>	<i>64</i>
Sicilia	87 131	17 100	86 605	17 000	62
Sardegna	33 256	20 000	33 055	19 900	72
<i>Extra-regio*</i>	<i>1 611</i>		<i>1 601</i>		
CYPRUS	17 394	20 400	19 094	22 400	82
LATVIA	23 581	11 800	34 936	17 500	64
LITHUANIA	36 444	12 400	60 411	20 600	75
LUXEMBOURG (GRAND-DUCHY)	48 898	87 600	40 759	73 000	266
HUNGARY	104 239	10 600	183 988	18 600	68
<i>Közép Magyarország</i>	<i>49 740</i>	<i>16 700</i>	<i>87 794</i>	<i>29 500</i>	<i>107</i>
<i>Dunántúl</i>	<i>27 457</i>	<i>9 300</i>	<i>48 463</i>	<i>16 400</i>	<i>60</i>
Közép Dunántúl	10 160	9 500	17 932	16 800	61
Nyugat Dunántúl	10 885	11 100	19 214	19 500	71
Dél Dunántúl	6 412	7 000	11 317	12 400	45
<i>Alföld es Észak</i>	<i>27 042</i>	<i>6 900</i>	<i>47 731</i>	<i>12 200</i>	<i>44</i>
Észak Magyarország	7 725	6 600	13 636	11 600	42
Észak-Alföld	9 897	6 700	17 469	11 800	43
Dél-Alföld	9 420	7 400	16 626	13 000	47
MALTA	8 106	19 000	10 097	23 600	86
Excluding extra-regio	8 091	18 900	10 078	23 600	86
<i>Extra-regio*</i>	<i>16</i>		<i>19</i>		
NETHERLANDS	662 770	39 300	605 554	35 900	131
<i>Noord-Nederland</i>	<i>60 476</i>	<i>35 200</i>	<i>55 255</i>	<i>32 100</i>	<i>117</i>
Groningen	28 563	49 000	26 098	44 800	163
Friesland (NL)	18 093	28 000	16 531	25 600	93
Drenthe	13 820	28 300	12 627	25 800	94
<i>Oost-Nederland</i>	<i>115 256</i>	<i>32 300</i>	<i>105 307</i>	<i>29 600</i>	<i>108</i>
Overijssel	36 506	32 000	33 354	29 300	107
Gelderland	66 709	33 000	60 950	30 100	110
Flevoland	12 042	30 000	11 003	27 400	100
<i>West-Nederland</i>	<i>344 956</i>	<i>43 200</i>	<i>315 177</i>	<i>39 500</i>	<i>144</i>
Utrecht	58 412	46 400	53 369	42 400	154
Noord-Holland	133 358	48 500	121 846	44 300	161
Zuid-Holland	141 758	39 500	129 520	36 100	131
Zeeland	11 429	30 000	10 442	27 400	100
<i>Zuid-Nederland</i>	<i>136 953</i>	<i>38 000</i>	<i>125 130</i>	<i>34 700</i>	<i>126</i>
Noord-Brabant	100 261	40 400	91 605	36 900	134
Limburg (NL)	36 693	32 800	33 526	30 000	109
<i>Extra-regio*</i>	<i>5 127</i>		<i>4 685</i>		

Regional GDP in the European Union, 2014

Region (NUTS 2013)	GDP €million	GDP per capita €	GDP million PPS	GDP per capita PPS	GDP per capita PPS, EU28=100
EU	13 959 739	27 500	13 959 739	27 500	100
AUSTRIA	329 296	38 500	303 217	35 500	129
<i>Ostösterreich</i>	143 029	38 700	131 702	35 600	130
Burgenland	7 638	26 500	7 033	24 400	89
Niederösterreich	51 180	31 400	47 127	28 900	105
Wien	84 211	47 300	77 542	43 500	158
<i>Südösterreich</i>	60 216	33 900	55 448	31 200	114
Kärnten	17 937	32 200	16 517	29 700	108
Steiermark	42 279	34 700	38 931	32 000	116
<i>Westösterreich</i>	125 961	41 000	115 985	37 800	138
Oberösterreich	56 170	39 200	51 722	36 100	132
Salzburg	24 256	45 200	22 335	41 600	152
Tirol	29 893	41 200	27 525	38 000	138
Vorarlberg	15 642	41 500	14 404	38 200	139
<i>Extra-regio*</i>	90		83		
POLAND	410 845	10 700	714 521	18 600	68
<i>Region Centralny</i>	116 243	14 800	202 165	25 800	94
Łódzkie	25 055	10 000	43 574	17 400	63
Mazowieckie	91 188	17 100	158 591	29 800	108
<i>Region Południowy</i>	83 006	10 400	144 360	18 100	66
Małopolskie	32 053	9 500	55 746	16 600	60
Śląskie	50 953	11 100	88 614	19 300	70
<i>Region Wschodni</i>	51 221	7 600	89 082	13 200	48
Lubelskie	16 062	7 500	27 934	13 000	47
Podkarpackie	16 107	7 600	28 012	13 200	48
Świętokrzyskie	9 840	7 800	17 113	13 500	49
Podlaskie	9 213	7 700	16 022	13 400	49
<i>Region Północno-Zachodni</i>	64 351	10 400	111 917	18 000	66
Wielkopolskie	39 811	11 500	69 238	20 000	73
Zachodniopomorskie	15 371	8 900	26 733	15 600	57
Lubuskie	9 169	9 000	15 946	15 600	57
<i>Region Południowo-Zachodni</i>	43 408	11 100	75 493	19 300	70
Dolnośląskie	34 735	11 900	60 409	20 800	76
Opolskie	8 672	8 600	15 083	15 000	55
<i>Region Północny</i>	52 615	9 000	91 506	15 700	57
Kujawsko-Pomorskie	18 176	8 700	31 610	15 100	55
Warmińsko-Mazurskie	11 047	7 600	19 212	13 300	48
Pomorskie	23 393	10 200	40 684	17 700	64
PORTUGAL	173 446	16 700	222 589	21 400	78
<i>Continente</i>	165 516	16 700	212 412	21 500	78
Norte	50 347	13 900	64 612	17 800	65
Algarve	7 348	16 600	9 430	21 300	78
Centro (PT)	32 708	14 400	41 975	18 500	67
Area Metropolitana de Lisboa	64 010	22 800	82 146	29 300	106
Alentejo	11 104	15 000	14 250	19 300	70
<i>Região Autónoma dos Açores</i>	3 731	15 100	4 788	19 400	71
<i>Região Autónoma da Madeira</i>	4 085	15 700	5 242	20 200	73
<i>Extra-regio*</i>	114		147		
ROMANIA	150 230	7 500	301 801	15 200	55
<i>Macroregiunea Unu</i>	33 525	6 800	67 350	13 600	50
Nord-Vest	16 925	6 500	34 001	13 100	48
Centru	16 600	7 100	33 349	14 200	52
<i>Macroregiunea Doi</i>	32 322	5 600	64 932	11 300	41
Nord-Est	15 387	4 700	30 912	9 500	34
Sud-Est	16 935	6 800	34 020	13 600	50
<i>Macroregiunea Trei</i>	58 687	11 000	117 897	22 000	80
Sud - Muntenia	18 234	5 900	36 630	11 900	43
București - Ilfov	40 453	17 700	81 267	35 600	129
<i>Macroregiunea Patru</i>	25 573	6 700	51 375	13 400	49
Sud-Vest Oltenia	11 288	5 600	22 677	11 200	41
Vest	14 285	7 900	28 698	15 800	58
<i>Extra-regio*</i>	123		247		
SLOVENIA	37 303	18 100	46 648	22 600	82
Vzhodna Slovenija	16 416	15 000	20 528	18 800	68
Zahodna Slovenija	20 888	21 600	26 120	27 000	98
SLOVAKIA	75 561	13 900	114 215	21 100	77
Bratislavský kraj	21 075	33 900	31 856	51 200	186
Západné Slovensko	24 064	13 100	36 375	19 800	72
Stredné Slovensko	14 877	11 000	22 487	16 700	61
Východné Slovensko	15 544	9 600	23 496	14 600	53

Regional GDP in the European Union, 2014

Region (NUTS 2013)	GDP €million	GDP per capita €	GDP million PPS	GDP per capita PPS	GDP per capita PPS, EU28=100
EU	13 959 739	27 500	13 959 739	27 500	100
FINLAND**	205 268	37 600	165 378	30 300	110
<i>Manner-Suomi</i>	203 848	37 500	164 234	30 200	110
Länsi-Suomi	46 476	33 800	37 445	27 200	99
Helsinki-Uusimaa	78 461	49 200	63 214	39 600	144
Etelä-Suomi	38 496	33 100	31 015	26 700	97
Pohjois- ja Itä-Suomi	40 414	31 100	32 561	25 000	91
<i>Åland</i>	1 354	47 000	1 091	37 900	138
<i>Extra-regio*</i>	65		53		
SWEDEN	430 642	44 400	326 823	33 700	123
<i>Östra Sverige</i>	197 255	52 000	149 700	39 500	144
Stockholm	135 631	62 200	102 933	47 200	172
Östra Mellansverige	61 623	38 200	46 767	29 000	106
<i>Södra Sverige</i>	168 067	40 100	127 550	30 400	111
Småland med öarna	30 898	37 500	23 449	28 500	104
Sydsverige	54 404	37 900	41 288	28 800	105
Västsverige	82 765	42 800	62 812	32 500	118
<i>Norra Sverige</i>	65 214	38 100	49 492	28 900	105
Norra Mellansverige	29 832	35 900	22 640	27 200	99
Mellersta Norrland	14 314	38 800	10 863	29 400	107
Övre Norrland	21 067	41 200	15 988	31 300	114
<i>Extra-regio*</i>	106		81		
UNITED KINGDOM	2 254 297	34 900	1 933 613	29 900	109
<i>North East (England)</i>	66 700	25 500	57 212	21 800	80
Tees Valley & Durham	28 237	23 800	24 220	20 500	74
Northumberland and Tyne & Wear	38 465	26 800	32 993	23 000	84
<i>North West (England)</i>	209 557	29 400	179 746	25 200	92
Cumbria	15 027	30 200	12 889	25 900	94
Greater Manchester	80 253	29 400	68 837	25 200	92
Lancashire	38 687	26 300	33 184	22 500	82
Cheshire	36 079	39 500	30 947	33 900	123
Merseyside	39 511	26 000	33 890	22 300	81
<i>Yorkshire & the Humber</i>	148 869	27 800	127 692	23 800	87
East Yorkshire & Northern Lincolnshire	24 447	26 500	20 970	22 700	83
North Yorkshire	25 191	31 300	21 608	26 800	98
South Yorkshire	33 349	24 400	28 605	20 900	76
West Yorkshire	65 882	29 100	56 510	25 000	91
<i>East Midlands (England)</i>	133 084	28 700	114 152	24 600	90
Derbyshire & Nottinghamshire	60 075	28 000	51 529	24 000	87
Leicestershire, Rutland & Northamptonshire	54 089	30 800	46 395	26 400	96
Lincolnshire	18 919	25 900	16 227	22 200	81
<i>West Midlands (England)</i>	160 458	28 100	137 632	24 100	88
Herefordshire, Worcestershire & Warwickshire	40 978	31 200	35 148	26 700	97
Shropshire & Staffordshire	41 815	26 300	35 867	22 500	82
West Midlands	77 665	27 700	66 617	23 700	86
<i>East of England</i>	194 081	32 200	166 472	27 700	101
East Anglia	79 072	32 300	67 824	27 700	101
Bedfordshire & Hertfordshire	64 867	36 100	55 639	30 900	113
Essex	50 143	28 300	43 010	24 300	88
<i>London</i>	509 402	59 700	436 937	51 200	186
Inner London - West	193 762	172 600	166 198	148 000	539
Inner London - East	148 704	65 400	127 550	56 100	204
Outer London - East & North East	47 990	26 100	41 163	22 400	81
Outer London - South	40 027	31 500	34 333	27 100	98
Outer London - West & North West	78 918	38 800	67 692	33 300	121
<i>South East (England)</i>	335 161	37 800	287 483	32 400	118
Berkshire, Buckinghamshire & Oxfordshire	111 967	47 900	96 040	41 100	149
Surrey, East & West Sussex	103 686	36 900	88 936	31 600	115
Hampshire & Isle of Wight	69 369	35 800	59 501	30 700	112
Kent	50 140	28 100	43 008	24 100	88
<i>South West (England)</i>	169 288	31 200	145 206	26 800	97
Gloucestershire, Wiltshire & Bristol/Bath area	86 831	36 000	74 479	30 800	112
Dorset & Somerset	37 515	28 800	32 179	24 700	90
Cornwall & Isles of Scilly	13 230	24 200	11 348	20 700	75
Devon	31 711	27 300	27 200	23 500	85
<i>Wales</i>	75 976	24 600	65 168	21 100	77
West Wales & The Valleys	42 879	22 000	36 779	18 900	69
East Wales	33 097	28 900	28 389	24 800	90
<i>Scotland</i>	172 744	32 300	148 171	27 700	101
Eastern Scotland	65 091	31 700	55 831	27 200	99
South Western Scotland	68 059	29 100	58 377	25 000	91
North Eastern Scotland	25 639	52 400	21 991	44 900	164
Highlands & Islands	13 956	29 900	11 971	25 600	93
<i>Northern Ireland</i>	48 078	26 100	41 239	22 400	82
<i>Extra-regio*</i>	30 897		26 502		

** Finland: Regional data for 2014 estimated by Eurostat