



HOMES FOR MEDICO-SOCIAL CARE FOR CHILDREN IN 2012

The number of Homes for medico-social care for children at the end of 2012 was 30 with capacity of 3 624 places. 2 087 children are accommodated there. 1 169 of them were boys and 918 - girls.

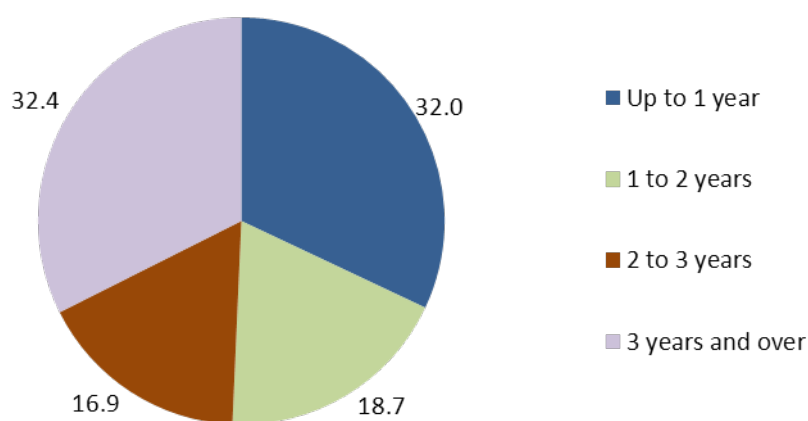
The trend of decreasing of the total number of accommodated in the Homes for medico-social care for children continued in 2012. The decrease by 10.0% compared to the end of 2011 was observed as of 31.12.2012 and compared to the end of 2005 decrease is 29.5%.

1. Children in the Homes for medico-social care for children during the period 2005 - 2012

	2005	2006	2007	2008	2009	2010	2011	2012
Accommodated as of 31.12.	2 960	3 063	3 020	2 771	2 681	2 455	2 319	2 087

As of 31.12.2012, the share of children accommodated in the Homes for medico-social care aged up to 1 year - 32.0%. The relative share of children aged 1 to 2 years was 18.7%, within the age group 2 - 3 years - 16.9%, and 3 years and over - 32.4% of children, although Homes for medico-social care carry out continuous medical observation and provide specific care for children up to 3 years (Figure 1).

Figure 1. Structure of accommodated children in the Homes for medico-social care for children as of 31.12.2011 by age – %



2 485 children were entered in the Homes for medico-social care for children in 2012. 62.8% of them were up to 1 year, 16.3% - belong to age group from 1 to 2 years, 8.7% - from 2 to 3 years and 12.2% - 3 and over (Table 2).



2. Children new entrants in the Homes for medico-social care for children in 2012 by age

Entrants during the year	Number	Structure - %
Total	2485	100.0
Up to 1 year	1561	62.8
1 to 2 years	405	16.3
2 to 3 years	217	8.7
3 years and over	302	12.2

Practically everybody of the accommodated in the homes for medico-social care for children have parents. At the end of 2012, 2 048 children, or 98.1% of the accommodated children have one or two parents. Complete orphans and foundlings were only 39 children, or 1.9% of the total number of accommodated children at the end of the year.

3. Children in the Homes for medico-social care for children at the end of 2012

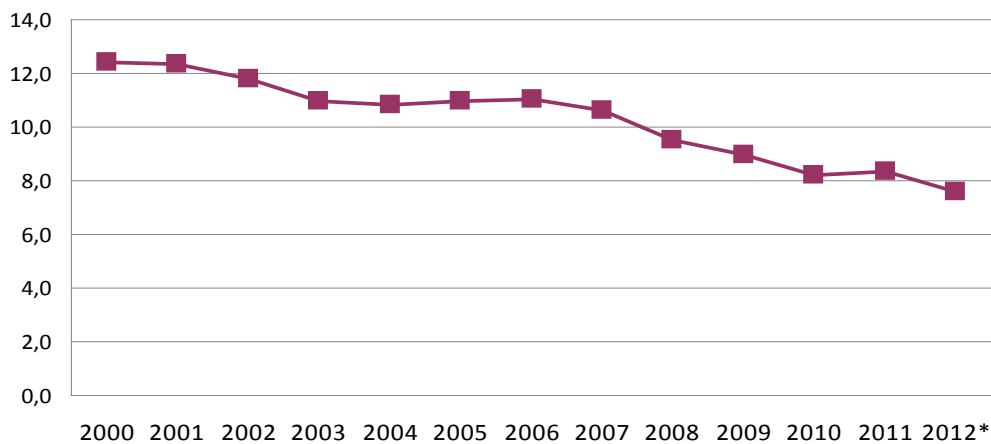
	(Number)		
	Total	Boys	Girls
Total	2087	1169	918
Complete orphans – two parents deceased	7	5	2
Foundlings	32	12	20
With parents	2048	1152	896
of which:			
With one parents	1106	605	501
With two parents	942	547	395

The number of discharged from the Homes for medico-social care for children in 2012 was 2 644. 107 (4.0%) of them are transferred to other institution due to completion of age, 2 537 children were leading away the institutions through adoptions or application of different protection measures in compliance with the Law for Child Protection.

The decrease of coefficient of institutionalization of children aged up to 3 years continues in 2012. That coefficient is expressed by ratio of the number of children accommodated in the Homes for medico-social care for children at the end of the year per 1 000 of children of the same age group within the population. The coefficient of institutionalization as of 31.12.2012 was 7.6 and decrease by 0.7 percentage points was observed compared to 2011 (Figure 2).



Figure 2. Children in the Homes for medico-social care for children per 1 000 of total population aged up to 3 completed years



* Preliminary data on population were used for 2012 coefficient calculation

The medical care and the attendance of children accommodated in Homes for medico-social care for children in 2012 were provided by 2 567 people's staff working on a basic labour contract. The distribution of the personnel by categories is presented in table 4.

4. Personnel in Homes for medico-social care for children by categories at the end of 2012

	(Number)
Total	2 567
Physicians	128
of which: Pediatricians	106
Medical specialists on Health cares	1156
of which:	
Nurses	1052
Physiotherapists	52
Other non-medical personnel	1283



METHODOLOGICAL NOTES

The survey on Homes for medico-social care for children an exhaustive survey carried out by the National Statistical Institute annually.

Sources of data are homes for medico-social care for children. Data on personnel, beds, distribution of children by main health and social categories are collected.

In accordance with the Law for Health Establishments, the Homes for medico-social care for children are registered as "other health establishments" where medical and other specialists carry out continuous medical observation and provide specific care for children up to 3 years of age with chronic diseases and medico-social problems.

In accordance with the Law for Child Protection the accommodation of children in specialised institutions is implemented only in the cases when the opportunities for accommodation of the children in family environment have been exhausted.

According to the Regulation for organization and activity of homes for medico-social care for children in addition to cases of accommodation in accordance with the Law for Child Protection, children with low weight due to premature can be admitted based on their parents or guardian agreement. The number of these children is included in the total number of institutionalized children for the period of stay in the homes.

Additional statistical information about the Survey on homes for medico-social care for children can be provided through the NSI's "User Services" Department, or by e-mail: info@nsi.bg.