



CRIMES CONCLUDED WITH PENALTY INFLICTED AND PERSONS CONVICTED IN FIRST SEMESTER OF 2012 (PRELIMINARY DATA)

According to the preliminary data of the National Statistical Institute for the first semester of 2012, the trials ended with inflicted penalty cover 14 250 committed crimes.

The number of persons convicted with penalties come into force amounted to 15 711. The number of persons with effective sentence of conviction amounted to 8 755 and conditionally sentenced were 6 956 persons.

There were not considerable changes in the structure of crimes, ended with penalties inflicted, by chapters of the Penal Code in the first half of 2012. The **crimes of general danger** (such committed in a way presenting a general danger or by means of general danger at the transport and communication, directed against public health or environment, related to the usage of nuclear energy for peace purposes, and other crimes of general danger) hold the first place as a number and relative share in the total number of punished criminality. 5 255 crimes of this kind have been punished in the first half of 2012. The relative share of these crimes in the total number of punished criminality was 36.9%. The number of convicted persons for this kind of crimes amounts to 5 124, or 32.6% from the total number of convicted persons.

- The punished cases of crimes against the transport and communications were 4 303. Convicted persons for this kind of crimes were 4 245, that present 82.8% from the total number of persons convicted for crimes of general danger.
- During the first half of 2012 the number of punished drug related crimes (contraband of drugs, production, processing, possessing, dissemination, transportation, carrying and other) was 578, as convicted persons were 539.

On the second place in the structure of punished criminality were **crimes against the property**. They include theft and robbery of property, misappropriation, fraud, extortion, receiving stolen goods, destroying and damaging of property. The number of punished crimes of this kind in first semester of 2012 was 5 089. The share of these crimes in the punished criminality was 35.7%. The number of persons convicted for this kind of crimes was 6 588 which presents 41.9% of the total number of convicted persons.

- 3 952 crimes “thefts of property” were concluded with infliction of penalty as the number of convicted persons for this kind of crime was 5 388.
- 459 persons were convicted for 384 robberies.

Punished **crimes against the person** (homicide, assault and battery, discrediting, kidnapping and illegal constraint, compulsion, disclosure of a secret of another, insult and libel, debauchery, rape and traffic of people) amounted to 794 in the first half of 2012, which constituted 5.6% from the total number of crimes concluded with infliction of penalty. The number of persons convicted was 739 (4.7%).

- 353 crimes “bodily harm” were concluded with penalties inflicted in the first half of 2012 and the number of persons convicted for committed bodily harms was 359.
- Trials for 60 intentional homicides (committed and attempted) were concluded with penalties inflicted, as 63 persons were convicted for that kind of crimes.
- The number of persons convicted for rape (committed and attempted) in the same period was 43.

Figure 1. Crimes with penalties inflicted and persons convicted in the first semesters of 2009 – 2012



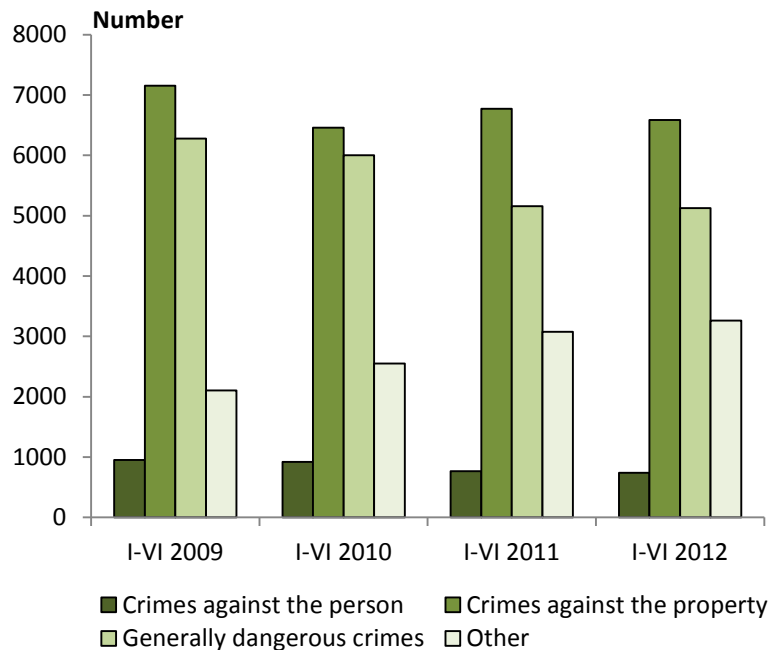
Persons convicted for “other kinds of crimes” commitment

In the first half of 2012 persons were convicted for “other kinds of crimes” commitment as follow:

- for crimes against the economy - 1 173 persons;
- for committed crimes against the activity of state bodies, public organizations and persons performing public duties - 797 persons;
- for crimes against the order and public peace - 283 persons;
- for crimes against the marriage, family and youth - 395 persons;
- for crimes against the financial, tax and insurance systems - 66 persons.



Figure 2. Persons convicted by chapters of the Penal Code in the first semesters of 2009, 2010, 2011 and 2012



Persons convicted by gender and age

In the first half of 2012 14 611 males and 1 100 females were convicted.

The highest was the share of convicted persons belonging to the age group from 18 to 24 years – 4 420 persons convicted (28.1%).

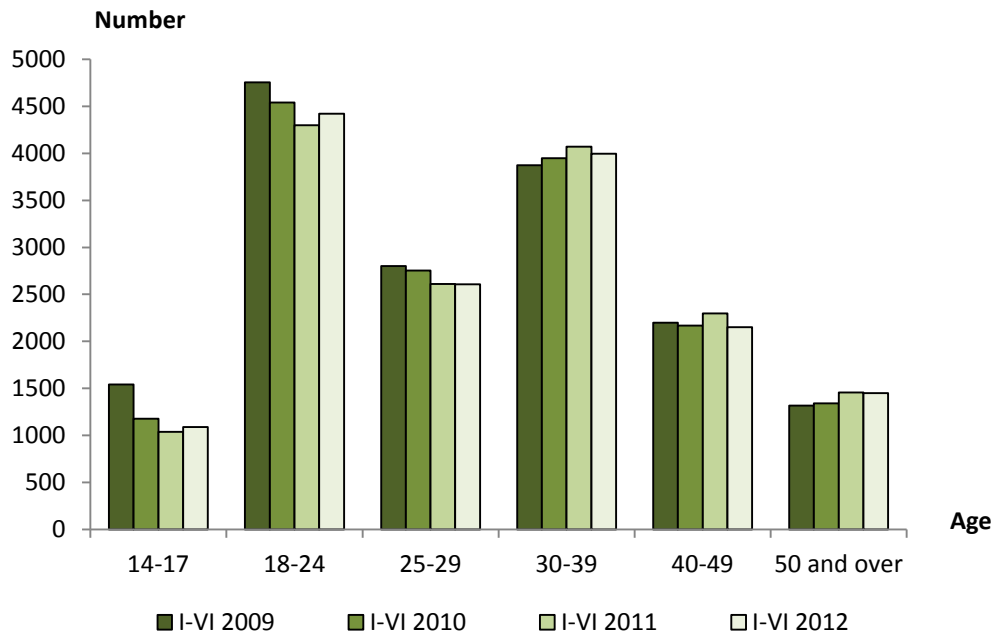
Second place was for 30 - 39 age group – 3 996 persons or 25.5%.

Persons convicted aged from 25 to 29 years were 2 607 (16.6% from the total number of convicted persons), followed by 40 - 49 age group, which were 2 151 persons (13.7%) and over 50 – 1 449 (9.2%).

The smallest was group of convicted juveniles – 1 088 persons aged from 14 to 18 years that presents 6.9% of the total number of convicted persons.



Figure 3. Persons convicted by age in the first semesters of 2009, 2010, 2011 and 2012



Persons convicted by penalty imposed

In the first half of 2012, 15 711 persons were convicted, as 8 755 - with effective sentences (55.7%) and 6 956 (44.3%) persons were convicted conditionally. There was not considerable change in the previous period's tendency of gradually decreasing of number of persons with effective sentences and lightly growth of conditionally sentenced.

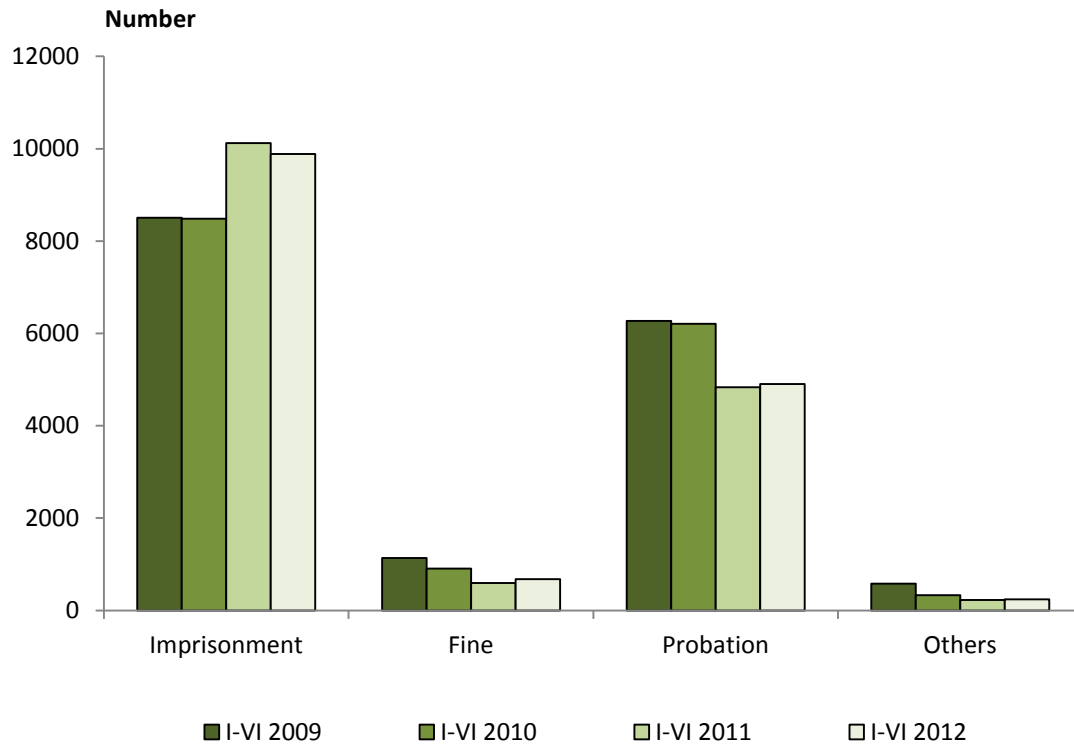
The number of persons convicted to imprisonment in first six months of 2012 was 9 889 or 62.9% of the total number of convicted persons.

The highest number and rate were persons convicted to imprisonment up to 6 months - 4 687 persons (47.4%) and from 6 months to 1 year - 2 974 persons (30.1%). Two persons were convicted to "Life imprisonment".

Penalty of probation was imposed to 4 906 persons (31.3% of the total number of convicted persons) and fine - 674 persons.



Figure 4. Persons convicted by penalty imposed in the first semesters of 2009, 2010, 2011 and 2012





METHODOLOGICAL NOTES

Data on crimes and persons convicted are obtained by processing six months information received from the regional, district and military courts on penal trials.

The survey object is the activity of the regional and district courts on penal trials of general, private and administrative character. Since 1998 the information for the activity of military courts has been also included. The information about the activity of Supreme Court of Cassation has not been included. Data from Prosecutor's Office of the Republic of Bulgaria are not included in statistical data for first half of the year.

Surveyed units are crimes, concluded with penalty inflicted and persons convicted with sentences come into force.

The numbers of crimes and persons convicted for certain reference year or period include those with sentence that has come into force during the same year or period.

Persons convicted with all kinds of inflicted penalty, including conditionally sentenced persons are included in the total number of persons convicted.

In the number of crimes concluded with penalty inflicted are included all crimes with inflicted penalty regardless they had been committed by one or more persons.

The age of persons convicted is given in completed years. Persons who have completed 14, but not 18 years are considered juveniles.

Convicted juvenile persons are included in the total number of persons convicted.

For additional information see NSI' web page - <http://www.nsi.bg/otrasalen.php?otr=50>



ANNEX

Table 1

CRIMES WITH PENALTY INFLICTED AND PERSONS CONVICTED FOR THE FIRST SEMESTER OF THE PERIOD 2009 - 2012¹

(Number)

Kind of crime	First semester of 2009		First semester of 2010		First semester of 2011		First semester of 2012 ²	
	Crimes with penalty inflicted	Persons convicted	Crimes with penalty inflicted	Persons convicted	Crimes with penalty inflicted	Persons convicted	Crimes with penalty inflicted	Persons convicted
Total³	14863	16486	14656	15930	14165	15769	14250	15711
of which:								
Crimes against the person	961	951	937	922	818	767	794	739
of which:								
Homicide								
(committed and attempted)	72	77	62	63	60	64	60	63
Bodily harm	464	498	487	505	360	367	353	359
Debauchery	187	171	151	144	137	116	131	121
of which: rape								
(committed and attempted)	71	73	69	74	38	41	41	43
Crimes against marriage, family and youth	199	206	245	231	295	281	394	395
Crimes against the property	5523	7155	5099	6457	5059	6771	5089	6588
of which:								
Theft	4021	5540	3623	4863	3932	5560	3952	5388
Robbery	443	533	487	603	381	467	384	459
Misappropriation	88	94	68	66	71	79	70	72
Fraud	279	297	289	321	212	230	224	225
Extortion	21	23	36	39	26	27	36	38
Destruction and damaging of property	336	331	346	320	208	182	209	190



CRIMES WITH PENALTY INFLICTED AND PERSONS CONVICTED FOR THE FIRST SEMESTER OF THE PERIOD 2009 - 2012¹

(Continued)

(Number)

Kind of crime	First semester of 2009		First semester of 2010		First semester of 2011		First semester of 2012 ²	
	Crimes with penalty inflicted	Persons convicted	Crimes with penalty inflicted	Persons convicted	Crimes with penalty inflicted	Persons convicted	Crimes with penalty inflicted	Persons convicted
Crimes against the economy	371	467	511	570	1120	1191	1121	1173
of which: crimes								
against the customs regime	35	65	50	62	78	86	75	78
Crimes against the financial, tax and insurance system	56	50	71	64	75	49	75	66
Crimes against the activity of state bodies, public organisations and persons performing public duties	579	617	682	789	652	757	662	797
of which:								
Illegal crossing of the boundary	378	408	425	521	416	524	404	543
Bringing of persons across the boundary	36	48	45	59	48	60	49	65
Bribery	38	37	65	64	35	32	60	54
Documentary crimes	391	335	507	418	473	405	476	430
Crimes against the order and the public peace	320	303	357	359	268	289	275	283
of which: hooliganism	268	246	292	283	183	179	185	170
Generally dangerous crimes	6352	6276	6125	6000	5300	5156	5255	5124
of which:								
Arson	40	39	39	40	34	34	33	35
Illegal production, possessing and use of weapon, explosion and ammunition	211	188	238	197	226	193	222	191



CRIMES WITH PENALTY INFLICTED AND PERSONS CONVICTED FOR THE FIRST SEMESTER OF THE PERIOD 2009 - 2012¹

(Continued and end)

(Number)

Kind of crime	First semester of 2009		First semester of 2010		First semester of 2011		First semester of 2012 ²	
	Crimes with penalty inflicted	Persons convicted	Crimes with penalty inflicted	Persons convicted	Crimes with penalty inflicted	Persons convicted	Crimes with penalty inflicted	Persons convicted

Crimes against the transport and communications	5477	5403	5040	4953	4368	4273	4303	4245
Theft of motor vehicles	161	178	131	149	84	103	84	90
Drug-related crimes	439	445	651	638	574	541	578	539
Military crimes	25	27	35	31	4	4	12	20

¹According to sentences come into force.

²Preliminary data.

³Incl. persons convicted for crimes committed abroad.



Table 2

**PERSONS CONVICTED BY SEX AND AGE FOR FIRST SEMESTERS
OF THE PERIOD 2009 - 2012¹**

(Number)

Age	First semester of 2009			First semester of 2010			First semester of 2011			First semester of 2012 ²		
	Total	Male	Female	Total	Male	Female	Total	Male	Female	Total	Male	Female
Total³	16486	15559	927	15930	14960	970	15769	14704	1065	15711	14611	1100
Juveniles (14 - 17)	1543	1468	75	1179	1128	51	1038	1002	36	1088	1050	38
Adults (over 18)	14943	14091	852	14751	13832	919	14731	13702	1029	14623	13561	1062
18-24	4754	4530	224	4539	4330	209	4297	4103	194	4420	4163	257
25-29	2800	2642	158	2754	2614	140	2611	2467	144	2607	2465	142
30-39	3874	3649	225	3948	3685	263	4071	3771	300	3996	3691	305
40-49	2197	2050	147	2169	1996	173	2296	2088	208	2151	1966	185
50 and over	1318	1220	98	1341	1207	134	1456	1273	183	1449	1276	173

¹According to sentences come into force.

²Preliminary data.

³Incl. persons convicted for crimes committed abroad.

Table 3

PERSONS CONVICTED BY PENALTIES IMPOSED IN THE FIRST SEMESTERS OF THE PERIOD 2009 - 2012 ¹

(Number)

Penalties imposed	First semester of 2009	First semester of 2010	First semester of 2011	First semester of 2012 ²
Total³	16486	15930	15769	15711
Effective sentences	11271	10749	9254	8755
Conditional sentences	5215	5181	6515	6956
Imprisonment	8504	8488	10120	9889
Up to 6 months	4657	4385	5001	4687
From 6 months to 1 year	2086	2223	2908	2974
From 1 to 3 years	1499	1572	1853	1894
From 3 to 5 years	160	197	232	220
From 5 to 10 years	63	75	77	79
From 10 to 15 years	26	15	30	14
Over 15 years	13	21	19	21
Life imprisonment	-	3	2	2
Life imprisonment without parole	1	-	2	-
Fine	1132	905	593	674
Probation	6270	6209	4832	4906
Others	579	325	220	240

¹According to sentences come into force.

²Preliminary data.

³Incl. persons convicted for crimes committed abroad.