



## CRÈCHES IN 2011

The number of detached crèches and groups in kindergartens functioning in the country at the end of 2011 is 753 with 29 612 places in them. There are 627 crèches in urban areas with 27 250 places and 126 crèches with 2 362 places in rural areas respectively.

The tendencies of increasing of the establishments' number as well as the number of places in them continue in 2011. The number of places in detached crèches and groups in kindergartens as of 31.12.2011 increases by 1 473 (5.2%) compared to the end of 2010. The total increase is mainly due to the increase of number of places in groups in kindergartens – by 1 159 (8.0%).

Table 1. **CRÈCHES AND PLACES IN CRÈCHES**

	(Number)						
	2005	2006	2007	2008	2009	2010	2011
Establishments	641	668	671	673	701	731	753
Places	22 094	23 478	24 409	25 091	26 952	28 139	29 612

The number of children new entrants in detached crèches and groups in kindergartens in 2011 is 29 380 or 2 354 children more than the children new entrants in 2010. At the end of the year 31 611 children are raised and brought up in crèches. 16 293 of them are boys, and – 15 318 girls.

Table 2. **CHILDREN IN CRÈCHES**

	(Number)						
	2005	2006	2007	2008	2009	2010	2011
Entrants during the year	22 675	24 082	24 597	25 023	27 395	27 026	29 380
Children, as of 31.12.	22 993	25 040	26 689	27 297	30 066	29 507	31 611

The distribution of children raised in crèches by age remains without changes in 2011. The highest is the share of children aged 2 to 3 years – 78.5%, the share of children aged 1 to 2 years is 18.4%. The smallest is the share of children aged up to 1 year - 38 or 0.1%. The number of children aged 3 years and over is 954 or 3.0%.

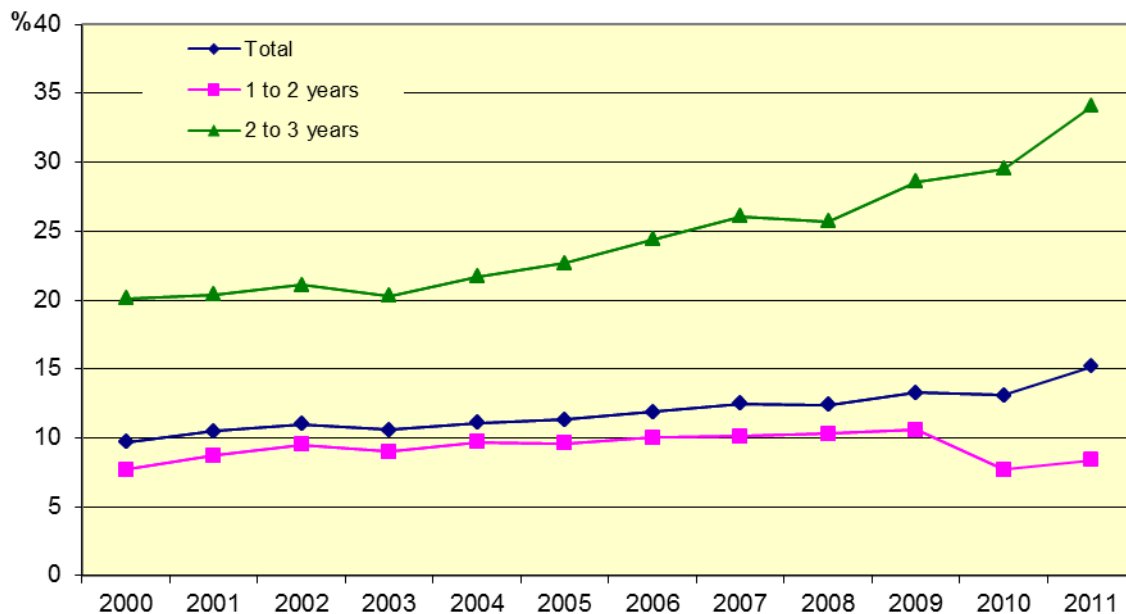


Table 3. **CHILDREN IN CRECHES AS OF 31.12. 2011 BY AGE**

	Number	Structure - %
<b>Children - total</b>	<b>31 611</b>	<b>100.0</b>
Up to 1 year	38	0.1
1 to 2 years	5 822	18.4
2 to 3 years	24 797	78.5
3 years and over	954	3.0

The coverage of children brought up in crèches at the end of 2011 is 15.2%, as increasing by 2 percentage points compared to the end of 2010. The indicator is expressed by ratio of the number of children aged up to 3 years brought up in detached crèches and groups in kindergartens per 100 of children of the same age group of the total population. The increase of the coverage of children aged 2 years is more significant – from 29.5% in 2010 to 34.1% in 2011. The coverage of children aged 1 year at the end of 2011 is 8.4%.

Figure 1. **COVERAGE OF CHILDREN AGED UP TO 3 YEARS BROUGHT IN CRECHES AND GROUPS IN KINDERGARTEN AS OF 31.12.**





7 062 persons are working on a basic labour contract in crèches at the end of 2011 in order to ensure conditions for physical and mental development and education of the children. The number of medical specialists on Health care is 3 838. The most of them are nurses (3 692) and midwives (114). The attendance of children is provided by 3 215 persons - non-medical personnel.

Table 4. **PERSONNEL IN CRECHES BY CATEGORIES AS OF 31.12**

Year	Medical specialists on Health cares			Other non-medical personnel
	Total	Nurses	Midwives	
2005	3 598	3 497	72	2 770
2006	3 796	3 690	76	2 859
2007	3 861	3 751	73	2 879
2008	3 925	3 821	68	2 842
2009	3 801	3 671	97	2 947
2010	3 783	3 654	100	3 121
2011	3 838	3 692	114	3 215



## METHODOLOGICAL NOTES

The survey “Crèches” is an exhaustive survey carried out by the National Statistical Institute annually. Detached crèches as well as groups in kindergartens are covered.

Sources of data are detached crèches and groups in kindergartens. Data on personnel, places in crèches and number of children as well as their distribution by age are collected.

Crèches are set up to support families in raising children up to the age of three years and to ensure their normal physical and mental development in accordance with the Law on Health and Ordinance № 26 / 18.11.2008 of the Minister of Health. Crèches are organizationally distinct structures, where medical and other specialists raise, educate and train children aged from three months to three years.

Groups for children aged between 3 months and 3 years could be opened at daily and weekly kindergartens as the organization of work there do not differ from the work of detached crèches.

Additional statistical information about the Survey on crèches can be provided through the NSI’s “User Services” Division, or by e-mail: [info@nsi.bg](mailto:info@nsi.bg).