



Construction Production Indices in March 2010^{1,2}

In March 2010, the total production in construction was 20.2% less compared to the same month of the previous year. A decline of 29.4% was registered in the production of building construction, while in the civil engineering production it was 1.4%.

Construction Production Indices in March 2010

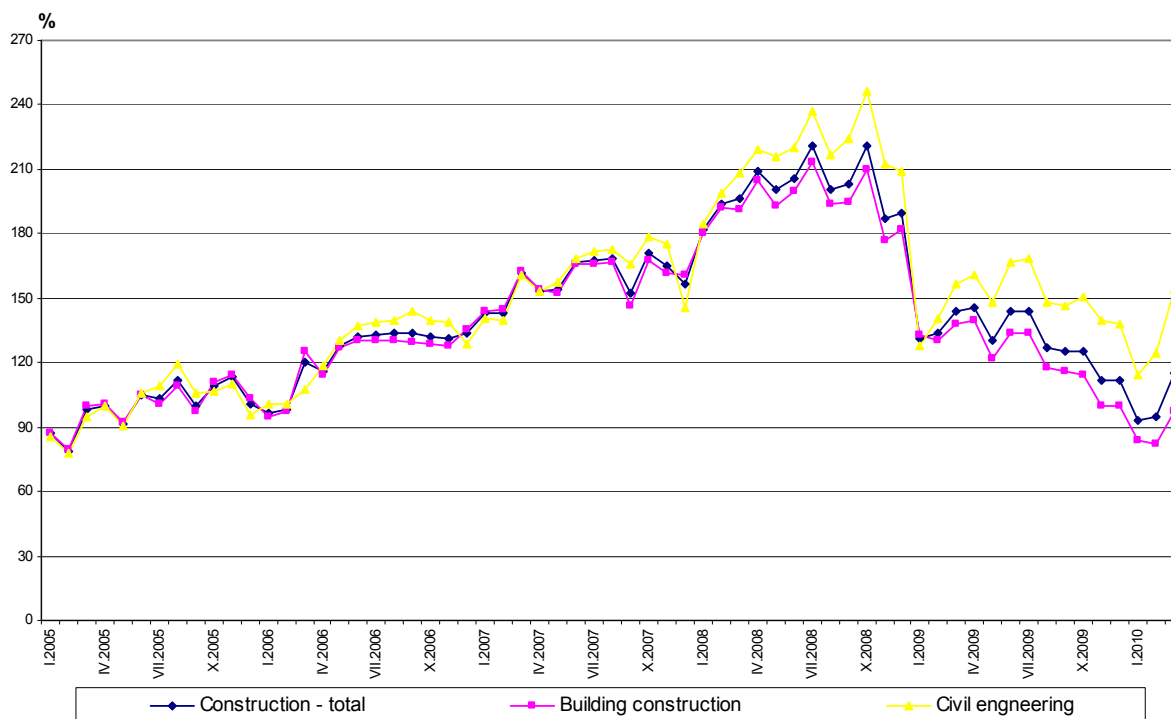
(Preliminary data)

	March		January -
	2005 = 100	Previous month = 100	March The same period of 2009 = 100
Construction - total	114.9	120.9	79.8
Building construction	97.7	119.1	70.6
Civil engineering	154.4	123.7	98.6

According to the preliminary data of the NSI, the construction production in March 2010 was 20.9% above the level of the previous month. An increase of 19.1% was registered in the production of building construction but in the civil engineering production it was 23.7%.

In the first quarter of 2010, the total production in construction fell by 25.9% compared to the same period of 2009. The drop in the building construction was 34.5%, while a decrease of 7.3% was registered in the civil engineering production.

Construction Production Indices (2005 = 100)



¹ Data for March 2010 is preliminary.

² Since January 2009 Construction Production Indices are calculated under the new classification NACE rev. 2. At the same time the base year was changed and indices were calculated on the base 2005. Data for the previous periods back to 2000, has been recalculated under NACE rev. 2.

The monthly indices show the short-term changes in the construction production between two comparable periods. This information can be used to analyze the current state of the construction activity in the country, as well as short-term forecast for its future development. The indices are calculated on the base of information on hours worked in the construction. The data is collected with monthly sample survey, which includes construction enterprises, which production exceeds 75% of the total production in construction.

Construction Production Indices - total and separately for building construction and civil engineering are calculated on the base (2005 = 100) for actual hours worked from all directly employed with the construction works.

According to the Classification of types of constructions (CC) the building construction includes construction of residential and no-residential buildings and civil engineering - infrastructure construction of roads, bridges, pipelines, power lines, telecommunication and other construction equipment.