

ACTIVITY OF ACCOMMODATION ESTABLISHMENTS¹ IN JUNE 2022

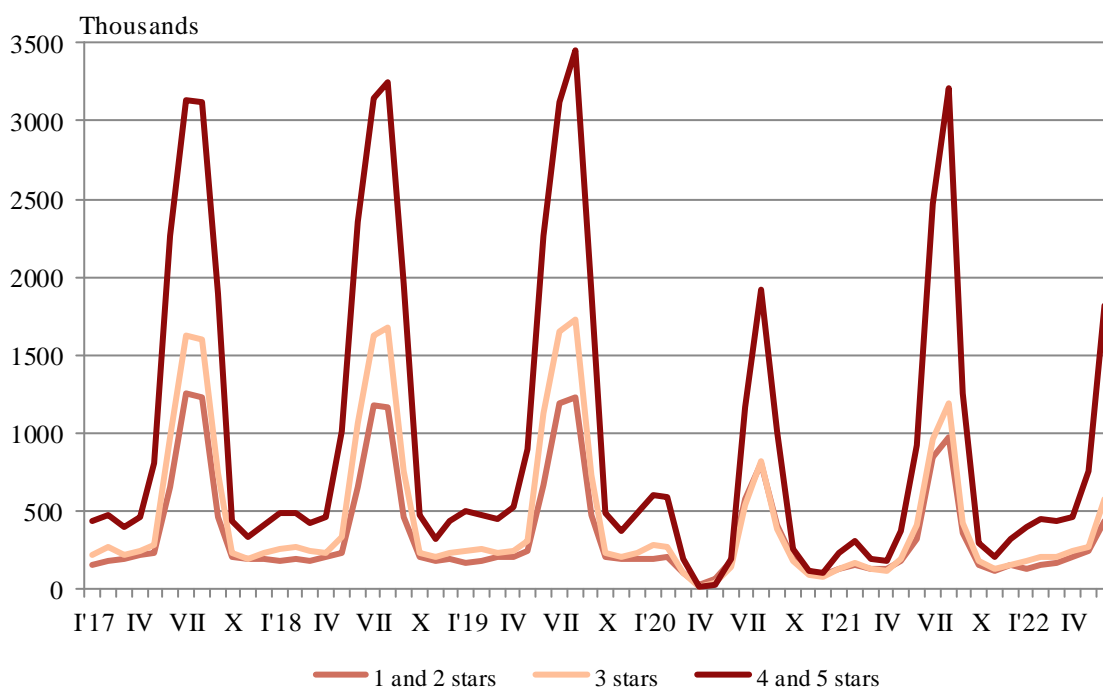
The most visited are the hotels and guest houses with 4 and 5 stars (with 10 or more bed-places) operating in June 2022

In June 2022, 3 090 accommodation establishments - hotels, motels, camping sites, mountain chalets and other establishments for short-term accommodation with more than 10 bed-places, functioned in the country (Annex, Table 1). The total number of rooms in them was 131.4 thousand and the bed-places were 295.0 thousand. In comparison with June 2021, the total number of accommodation establishments (functioned during the period) increased by 20.1% and the bed-places in them - by 20.6%.

The total number of nights spent in all accommodation establishments registered in June 2022 was 2 824.7 thousand, or 71.5% more in comparison with the same month of the previous year. The nights spent by foreigners were 1 698.1 thousand and by Bulgarians - 1 126.6 thousand.

In June 2022, 75.5% of all nights spent by foreign citizens and 47.2% of all nights spent by Bulgarians were realized in 4- and 5-stars hotels. In 3-star accommodation establishments, were spent 16.9% of all nights by foreigners and 25.4% of all nights by Bulgarian residents, while in the rest of the accommodation establishments (with 1 and 2 stars), they were 7.6% and 27.4%, respectively.

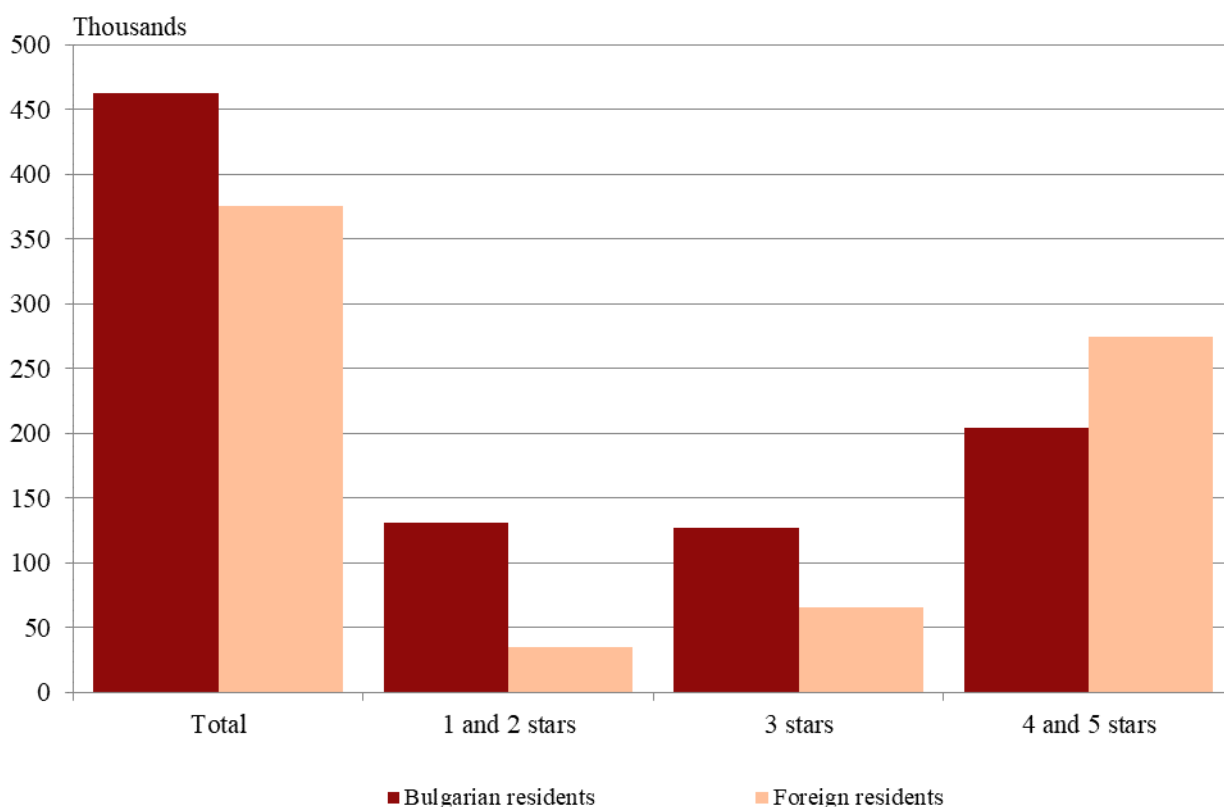
Figure 1. Nights spent in accommodation establishments by categories and months



¹ According to instructions from Eurostat the refugees from Ukraine are not included in the survey.

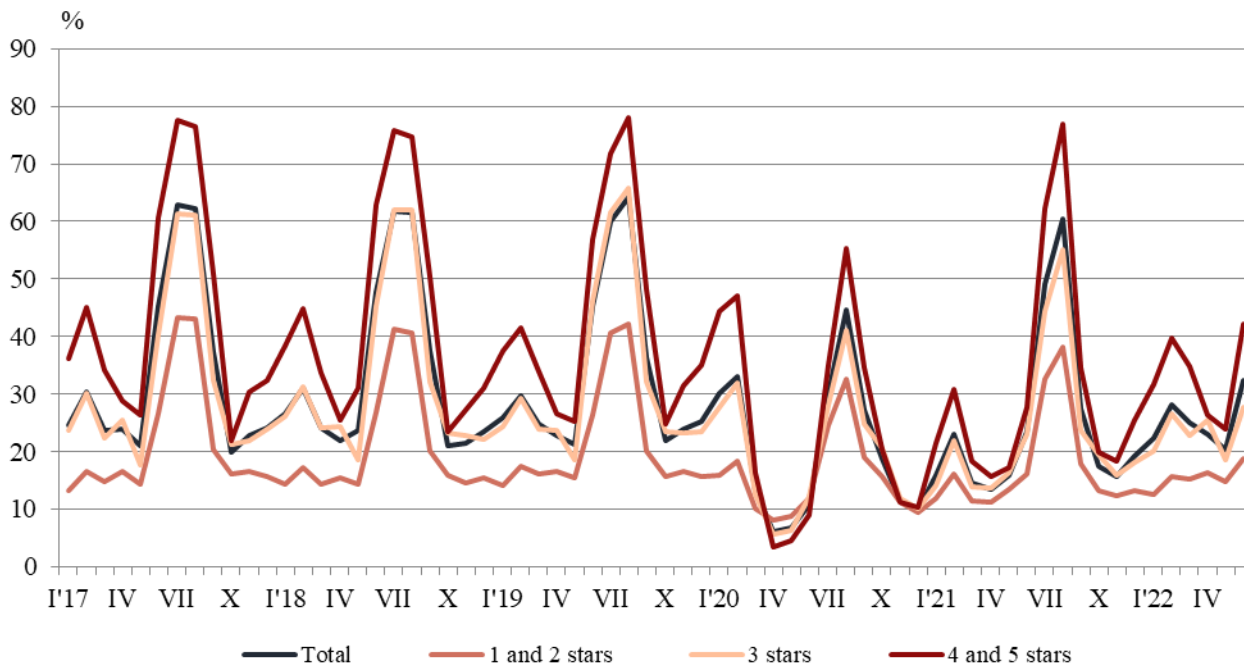
In June 2022, the number of arrivals in all accommodation establishments increased by 49.0% compared to the same month of 2021, and reached 838.1 thousand. Bulgarians spent nights in accommodation establishments in June 2022 were 462.5 thousand and spent 2.4 nights on average. The arrivals of foreigners were 375.6 thousand, and had 4.5 nights on average, as 73.2% of them spent nights in hotels with 4 and 5 stars.

Figure 2. Arrivals in accommodation establishments by categories in June 2022



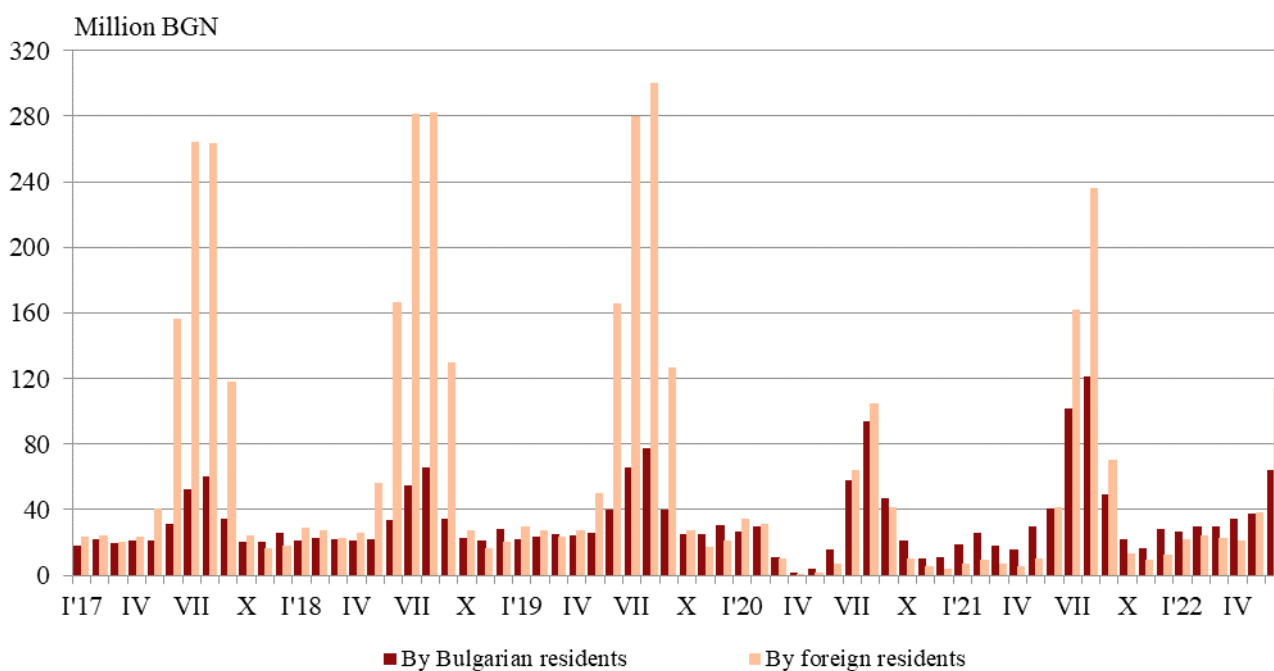
In June 2022, the total occupancy of the bed-places in accommodation establishments was 32.4% and increased by 9.0 percentage points compared to June 2021. The highest occupancy of the bed-places was in 4- and 5-stars accommodation establishments - 42.1%, followed by 3-star accommodation establishments - 27.8%, and with 1 and 2 stars - 18.7%.

Figure 3. Occupation of the bed-places in accommodation establishments by categories and months



The total revenues from nights spent in June 2022 reached 178.8 million BGN, as 114.6 million BGN were from foreigners and 64.2 million BGN - from Bulgarians.

Figure 4. Revenues from nights spent in accommodation establishments by months





Methodological notes

Since 2012, the statistical survey on **accommodation establishments** has been carried out monthly in compliance with the Regulation 692/2011 of the European Parliament and of the Council concerning European statistics on tourism and the Regulation 1051/2011 of the Commission implementing Regulation 692/2011 of the European Parliament and of the Council concerning European statistics on tourism, as regards the structure of the quality reports and the transmission of the data.

All categorized hotels, camping sites and other types of accommodation establishments with more than 10 bed-places in use during the reporting period are included in the observation.

The indicator **other accommodation establishments** includes holiday settlements, hostels, guest houses, bungalows, rest houses, mountain chalets, private rooms and flats and other establishments for short accommodation.

Available Bed Capacity is the maximum number of bed-places on offer for each day of the reference month.

The **revenues from nights spent** in accommodation establishments include the sums paid by the guests, without the extra services.

Time series: Tourism:

https://www.nsi.bg/sites/default/files/files/data/timeseries/TUR_2.1.1_en.xls

Statistical domain: Accommodation Establishments:

www.nsi.bg/en/node/1847/

IS Infostat: Accommodation Establishments:

https://infostat.nsi.bg/infostat/pages/module.jsf?x_2=237

Metadata and Methodology: Accommodation Establishments:

<https://www.nsi.bg/en/node/1972/>

Annex

Table 1

Activity of accommodation establishments in June 2022¹

Districts	Establishments - in numbers	Bed-places - in numbers	Available bed-nights - in numbers	Nights spent - in numbers		Arrivals in accommodation establishments - in numbers		Revenues from nights spent - Thousand BGN	
				Total	Of which: By foreigners	Total	Of which: Foreigners	Total	Of which: By foreigners
Total	3090	294993	8707765	2824745	1698165	838082	375634	178755	114583
Blagoevgrad	165	12285	365471	81732	13586	37603	5257	5484	1027
Burgas	691	117886	3471970	1277427	905555	257447	156187	78587	56883
Varna	306	53167	1589078	552031	454709	131256	93664	37673	31665
Veliko Tarnovo	124	4589	137220	32111	6895	18829	4621	1511	448
Vidin	27	856	26880	8072	1121	4502	781	372	62
Vratsa	35	1233	36990	11776	1807	5978	719	368	69
Gabrovo	72	3437	100810	23515	1699	13073	848	979	102
Dobrich	150	24107	676949	178030	124808	50416	30744	11121	7832
Kardzhali	70	2205	65370	12634	1432	7439	939	675	69
Kyustendil	95	3379	98758	17271	1789	9918	1018	930	115
Lovech	82	3479	101605	26872	2217	13405	916	1442	78
Montana	37	1360	40800	9146	478	3702	236	355	24
Pazardzhik	87	6681	199698	71062	6786	28121	1585	4420	444
Pernik	13	510	15300	4324	878	1641	345	160	44
Pleven	25	1315	39450	10469	1888	6043	946	479	131
Plovdiv	254	12264	362327	115865	23737	58590	9977	6941	1702
Razgrad	16	600	18000	4720	1014	2333	456	240	61
Ruse	63	2340	70200	16881	4417	10865	3043	920	297
Silistra	24	766	22920	4867	533	2857	379	220	34
Sliven	50	1765	52530	7353	1298	4477	613	410	106
Smolyan	226	9174	274812	46710	2049	20739	1002	2272	114
Sofia	86	6334	189160	35822	3903	17785	1729	1846	221
Sofia (stolitsa)	151	14884	446520	194889	121137	95656	53291	16885	12081
Stara Zagora	67	4924	143097	47902	7260	18365	2448	2591	435
Targovishte	15	591	17730	3230	636	1934	234	208	52
Haskovo	66	2592	76260	18218	4648	9068	2878	1076	376
Shumen	72	1554	46380	7072	1124	4150	506	349	65
Yambol	21	716	21480	4744	761	1890	272	241	46

¹ In use.