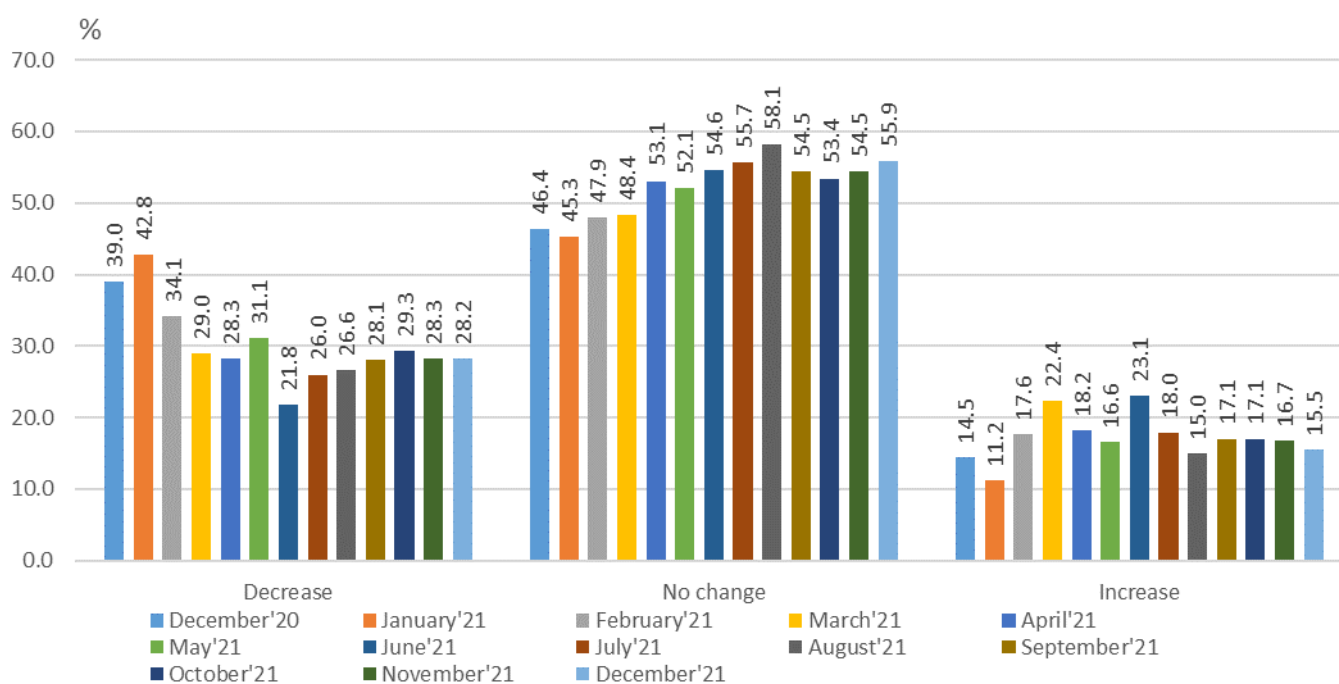


SITUATION OF THE NON-FINANCIAL ENTERPRISES IN THE EPIDEMIC SITUATION DECEMBER 2021

The National Statistical Institute of Bulgaria conducted short business survey amongst non-financial enterprises aiming to collect and present to the society and policy makers information on the economic effects from the declared state of emergency and the ensuing epidemic situation in the country due to COVID-19.

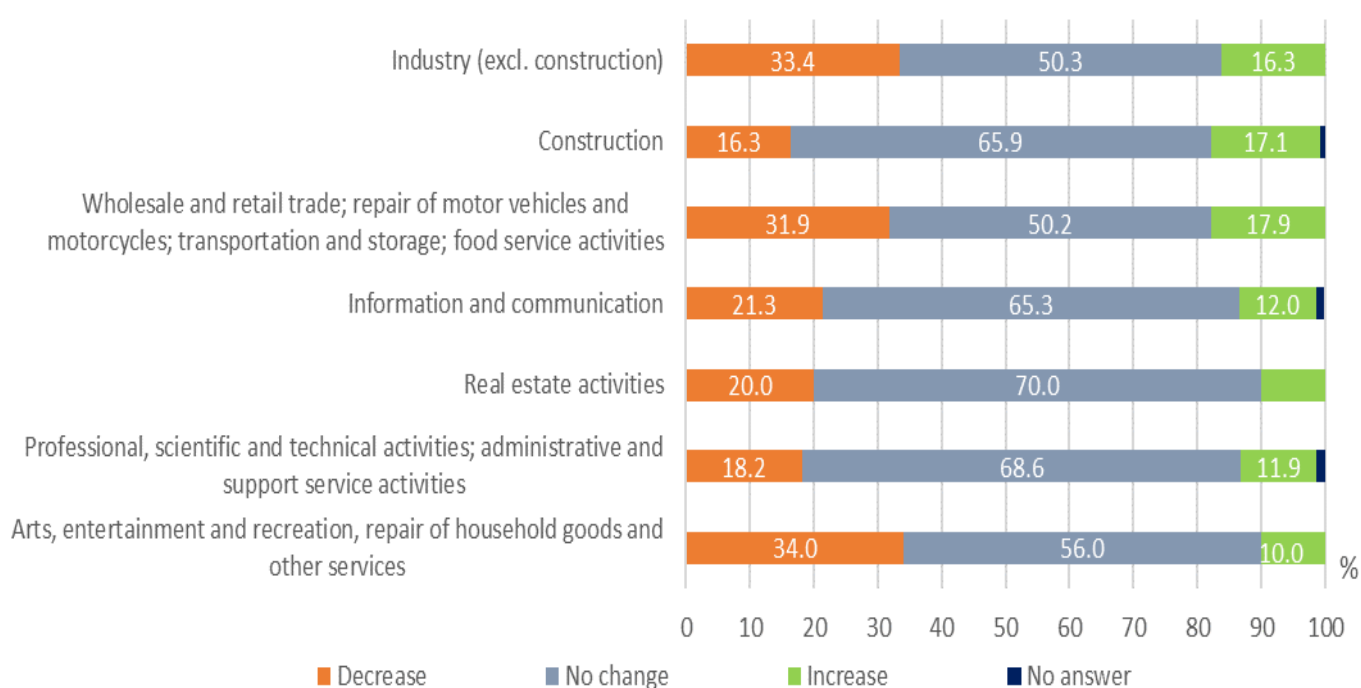
In December 2021, 28.2% of the responding non-financial enterprises declared a decrease in revenues from sales of goods and services compared to November 2021, 55.9% declared no change and 15.5% - an increase. A year earlier (December 2020), a decrease in revenues from sales of goods and services compared to previous month declared 39.0% of the responding non-financial enterprises, 46.4% declared no change and 14.5% - an increase (Figure 1).

Figure 1. Change in revenues from sales of goods and services in non-financial enterprises as compared to previous month, 2020 and 2021



The breakdown by economic sectors showed that in December 2021, 34.0% of the non-financial enterprises in ‘Arts, entertainment and recreation, repair of household goods and other services’ had a decrease in revenues from sales of goods and services, followed by ‘Industry’ with 33.4% and ‘Wholesale and retail trade; repair of motor vehicles and motorcycles; transportation and storage; food service activities’ with 31.9% (Figure 2).

Figure. 2. Change in revenues from sales of goods and services in non-financial enterprises in December 2021 as compared to previous month, by economic sectors



As regards the employees, 18.2% from the responding non-financial enterprises answered that they had to use ‘Paid leave’ as a measure for reducing the effects from the state of emergency and the epidemic situation (25.3% in December 2020), followed by ‘Teleworking’ - 10.0% (16.4% in December 2020) and ‘Unpaid leave’ - 9.6% (20.3% in December 2020). In December 2021, 5.2% from the responding non-financial enterprises answered that they had to employ new staff (4.8% in December 2020) (Figure 3).

Figure 3. Measures taken concerning employees in the enterprise

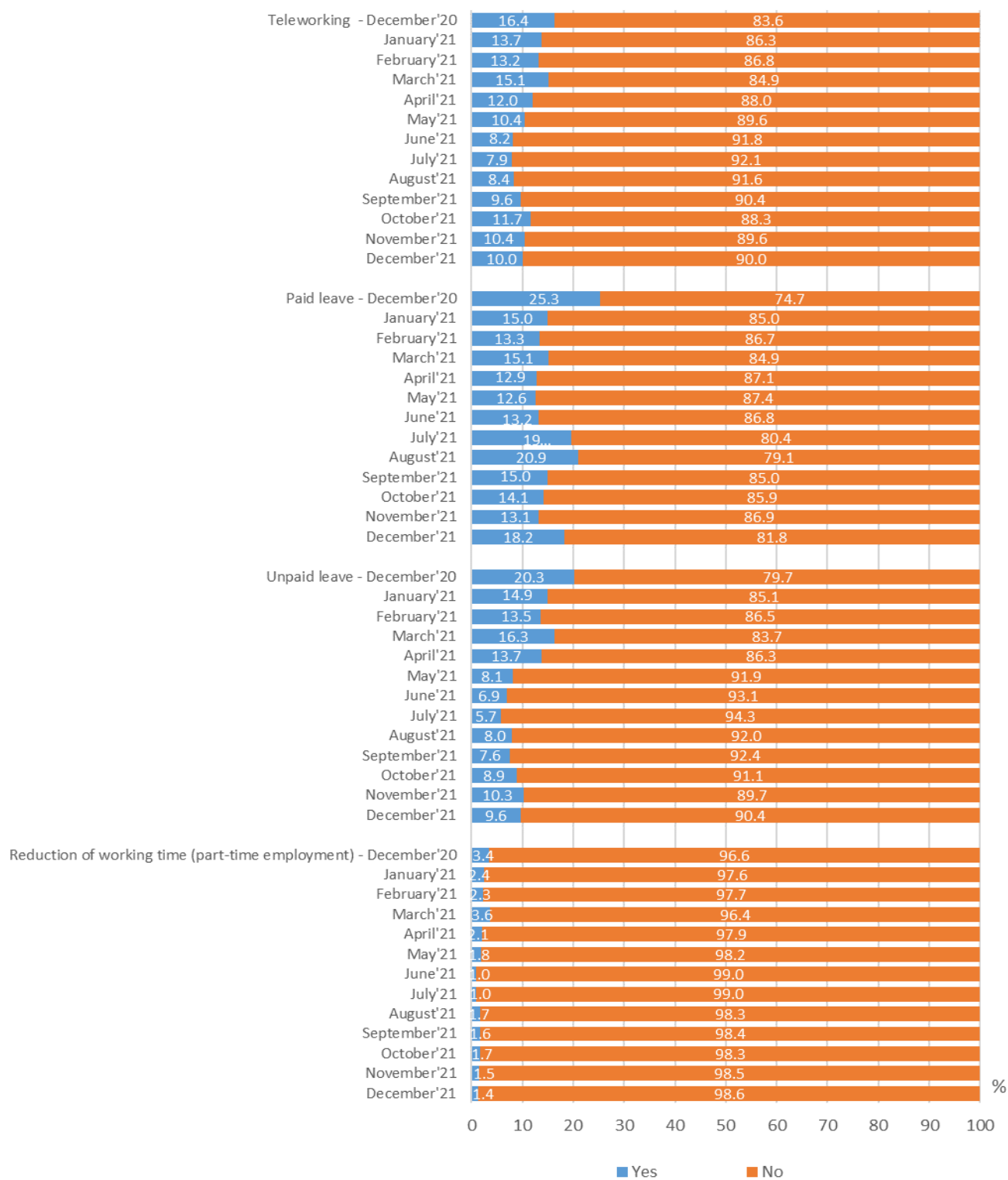


Figure 3. Measures taken concerning employees in the enterprise (continued and end)

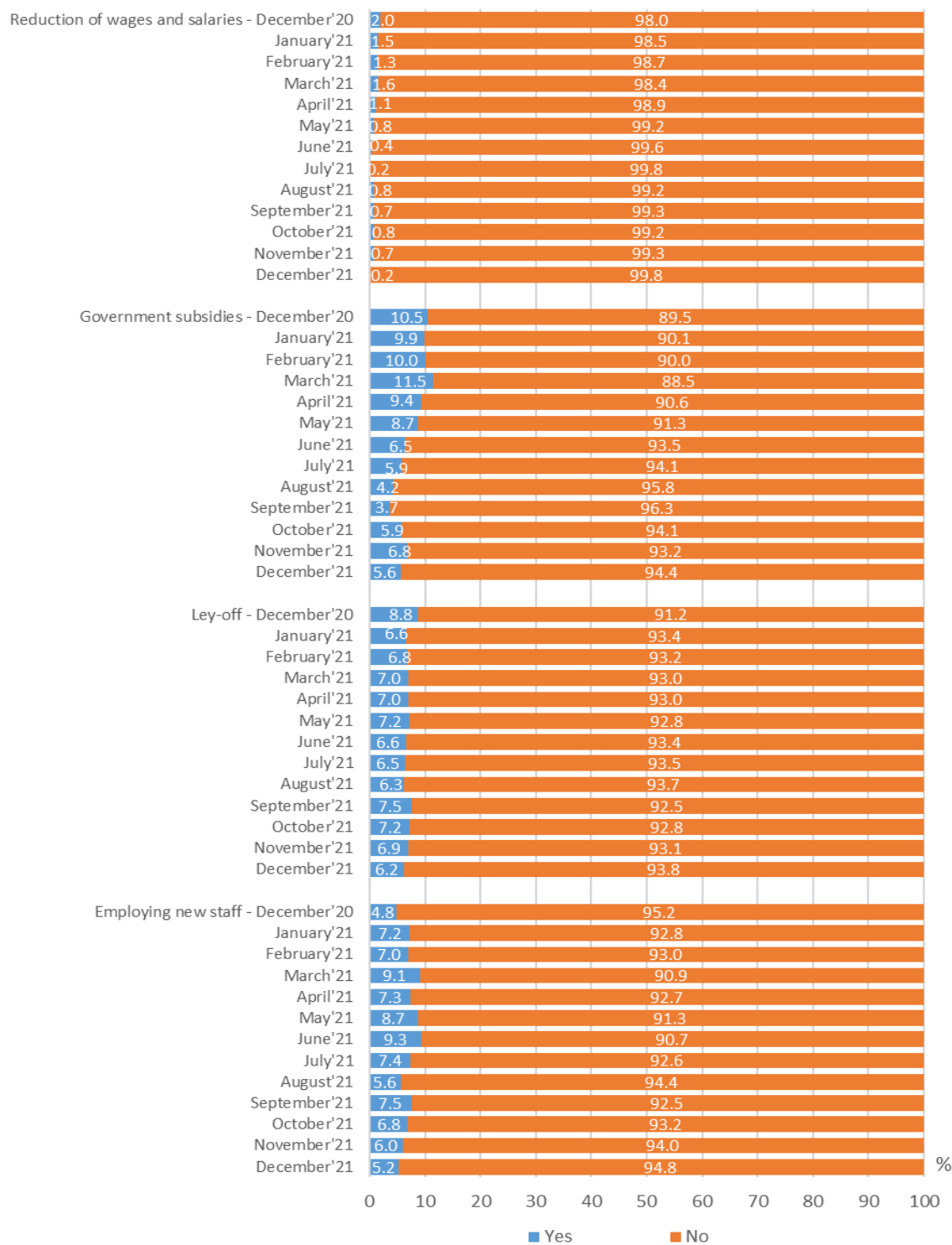
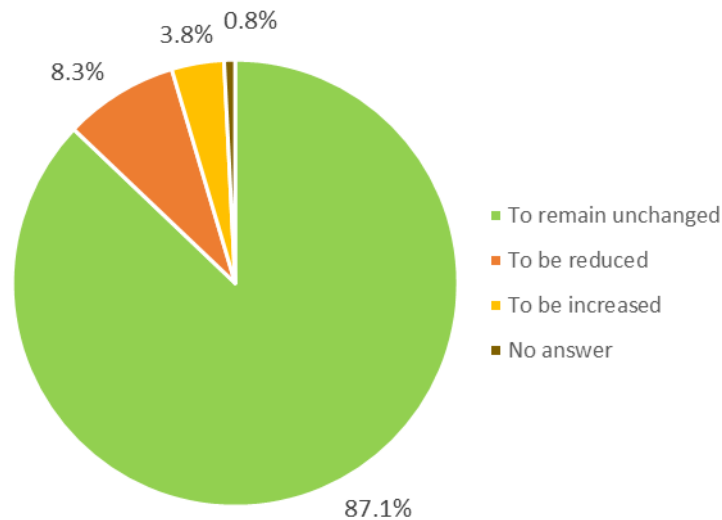


Figure 4. Expectations about the number of employees in the enterprise in short-term period (1 month)



In the following month, 94.4% from the responding non-financial enterprises expect that they will be able to continue their current activity, 2.5% expect to stop performing economic activity temporary and 1.8% expect to close their business (Table 1).

1. Expectations about the enterprise future in short-term period (1 month)

(Per cent)

Period	To continue to perform its current activity	To stop to perform economic activity temporary	To stop to perform economic activity at all	To change its activity	No answer
December 2020	92.0	4.7	1.7	1.1	0.5
January 2021	92.9	3.4	2.0	1.1	0.5
February 2021	93.7	2.1	1.9	1.8	0.5
March 2021	93.4	2.3	1.9	1.4	1.1
April 2021	95.1	1.3	2.5	0.7	0.4
May 2021	94.6	1.7	2.2	0.9	0.7
June 2021	94.9	1.3	2.3	0.6	0.9
July 2021	95.8	1.6	1.5	0.3	0.7
August 2021	94.4	1.6	2.2	1.0	0.9
September 2021	94.7	2.1	2.1	0.8	0.3
October 2021	94.2	1.7	2.3	1.2	0.6
November 2021	94.0	2.6	1.8	1.3	0.3
December 2021	94.4	2.5	1.8	0.8	0.5



Methodological notes

The survey of 'Non-financial enterprises' was carried out in January, in the sample were included 3 770 enterprises with at about 230 thousand employees. The participation in the survey was voluntary.

The unit of observation is the enterprise, which carries out one or more activities on one or more locations and produces goods or services for third parties. The definition of the enterprise meets the requirements of Regulation (EC) No. 696/93 for statistical units. The data refer to the activities of non-financial enterprises carried out on the territory of the country.

The coverage of economic activities is as follows: Industry; Construction; Wholesale and retail trade; repair of motor vehicles and motorcycles; transportation and storage; food service activities; Real estate activities; Information and communication; Professional, scientific and technical activities; administrative and support service activities; Arts, entertainment and recreation, repair of household goods and other services.

Not covered by the survey are economic activities: Agriculture, forestry and fishing; Financial and insurance activities; Human health and social work activities; Education; Public administration and defense; compulsory social security.