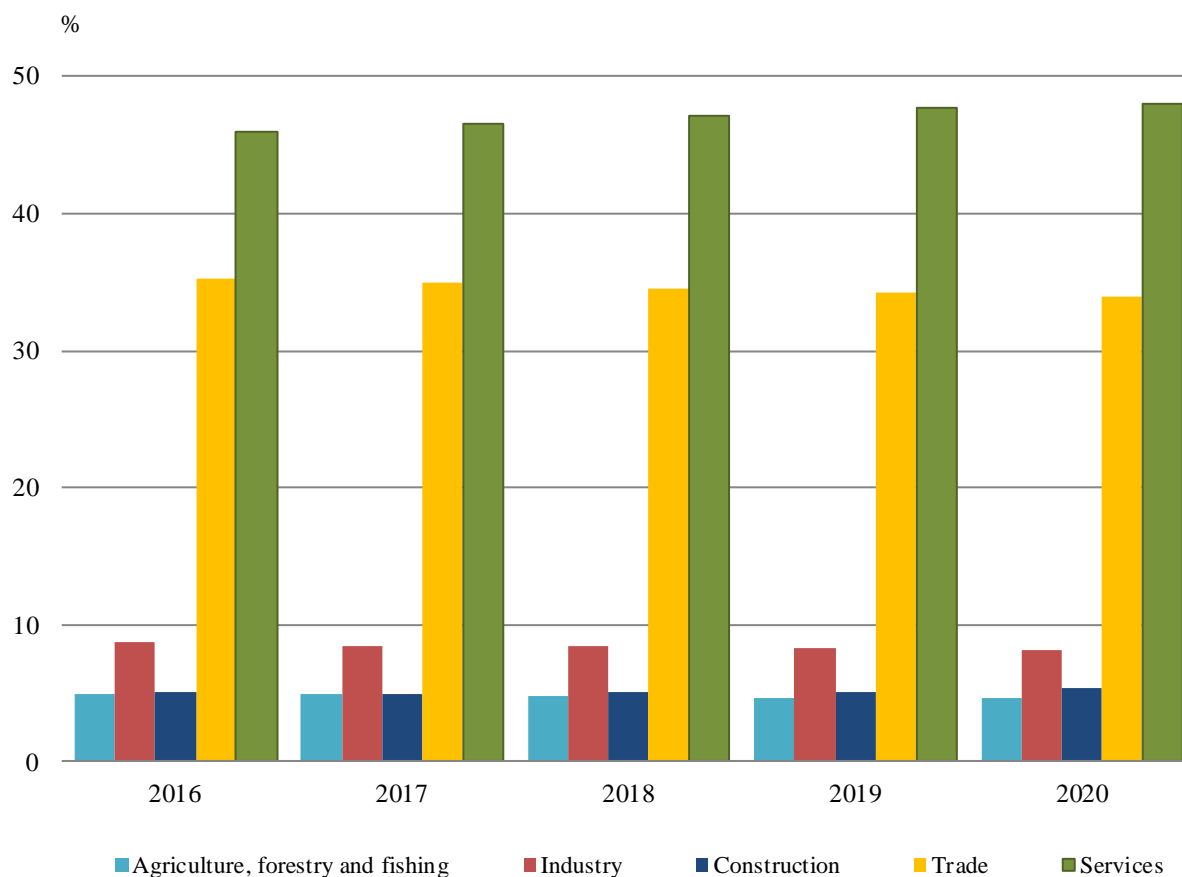


ACTIVITY OF NON-FINANCIAL ENTERPRISES¹ FOR 2020 (PRELIMINARY DATA)

1. Overview

Annual reports on their activity for 2020 were submitted at the National Statistical Institute (NSI) by 410 785 non-financial enterprises, which was 2.1% less than the previous year, as their structure by economic sectors changed insignificantly compared to the previous year.

Figure 1. Percentage share of enterprises by economic sectors and by years



¹ The non-financial enterprises include all sections by NACE Rev. 2 with the exception of 'Financial and insurance activities', 'Public administration and defence, compulsory social security', 'Activities of membership organisations' and 'Activities of households'.

www.nsi.bg

According to preliminary data in 2020 the number of persons employed full-time equivalent (FTE) in the non-financial enterprises was 2 092 062 or by 5.4% less than 2019. The production value at current prices amounted to 189 813 million BGN and a positive financial result of 19 499 million BGN was realized.

Figure 2. Production value per employee by economic sectors and by years

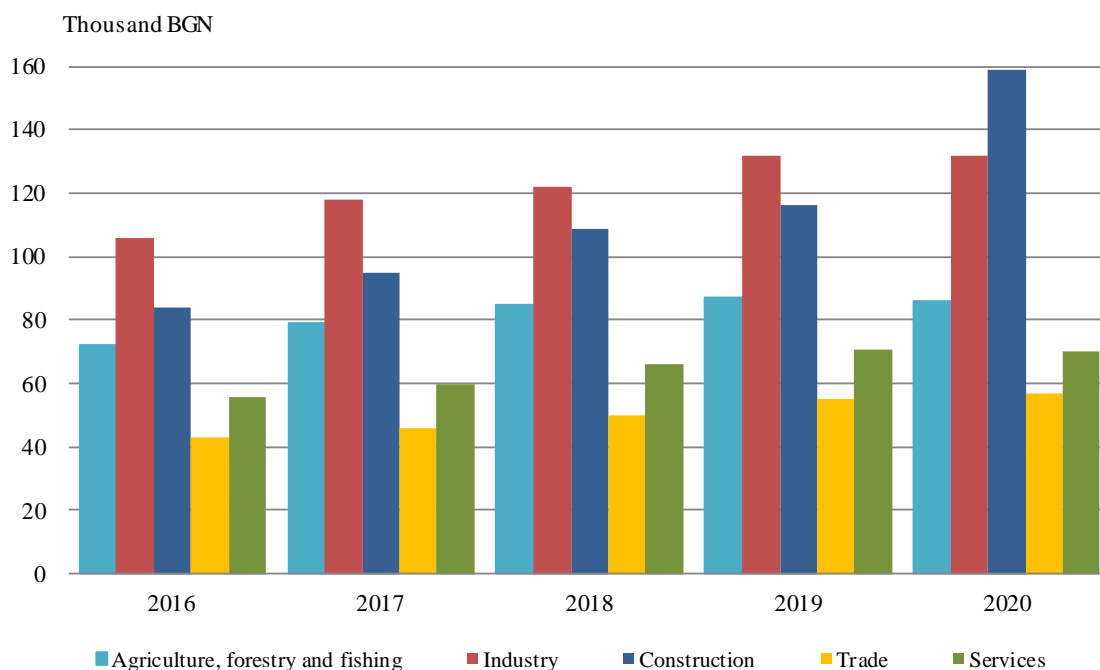
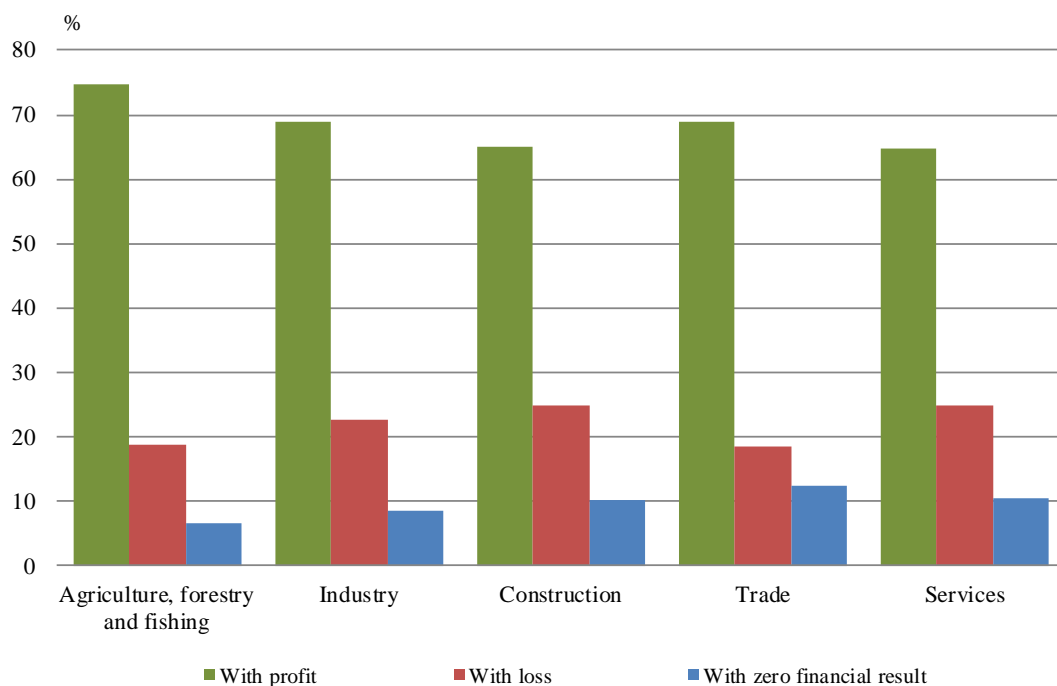


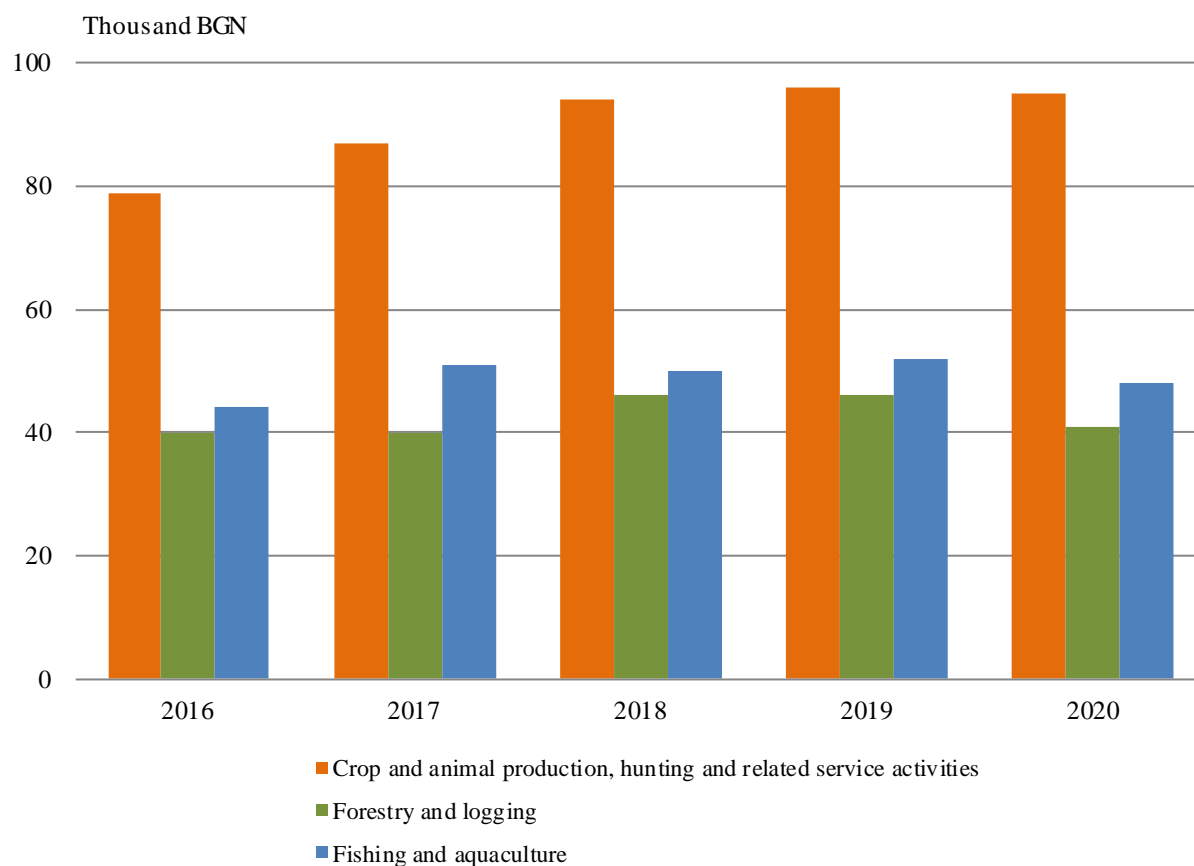
Figure 3. Percentage share of enterprises according to the financial result by economic sectors for 2020



2. Agriculture, Forestry and Fishing

At the NSI 19 049 enterprises in sector ‘Agriculture, Forestry and Fishing’ submitted annual reports on their activity for 2020 or 4.6% of the total number of the reported non-financial enterprises. These enterprises employed 81 624 persons who generated production value of 7 007 million BGN at current prices. Compared to 2019, the decline in persons employed in FTE was 3.6%. A positive financial result of 981 million BGN was reported, as 74.6% of the enterprises finished 2020 with profit, 18.8% - with loss and 6.6% with zero financial result.

Figure 4. Production value per employee by Agriculture, Forestry and Fishing sectors and by years

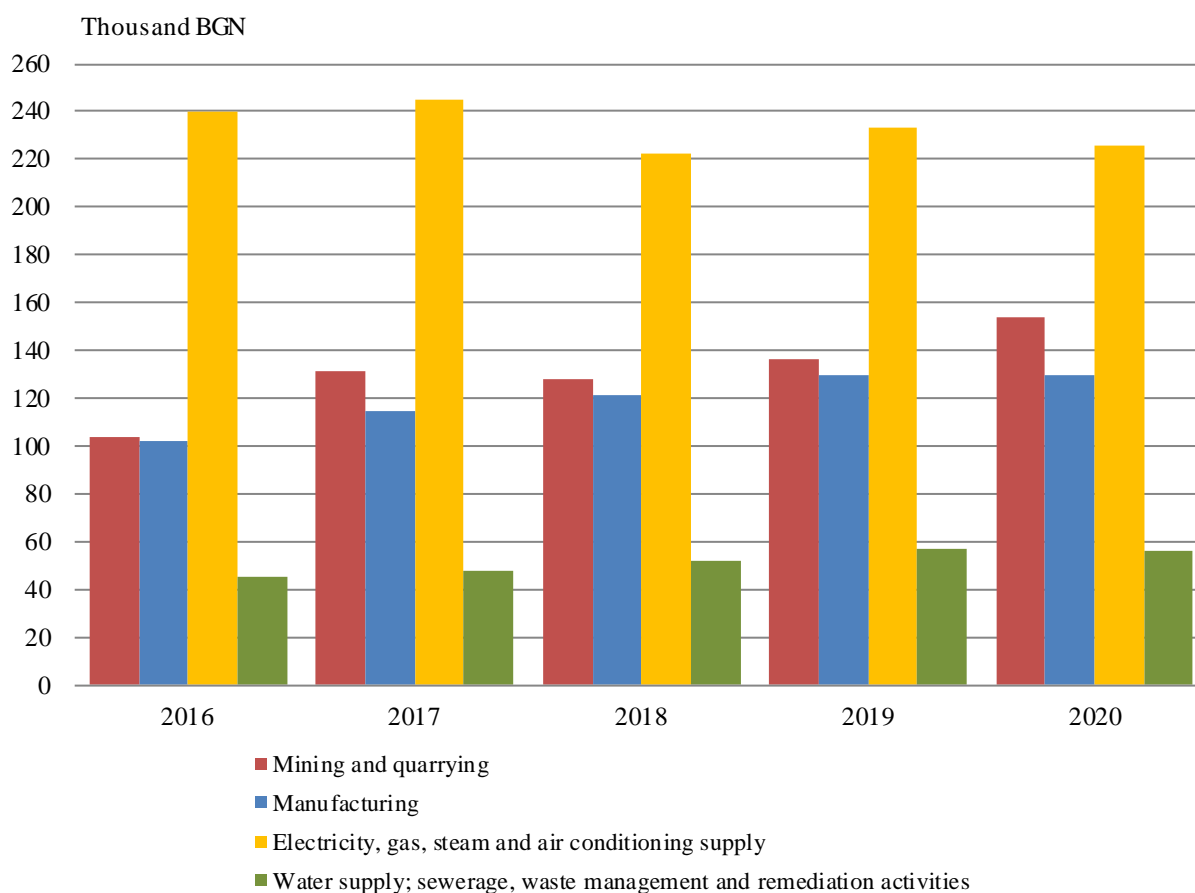


3. Industry

Annual reports on their activities for 2020 were submitted in NSI by 33 792 industrial enterprises or 8.2% of the total number of the reported non-financial enterprises at the NSI, as the largest share had sector 'Manufacturing' - 90.2%.

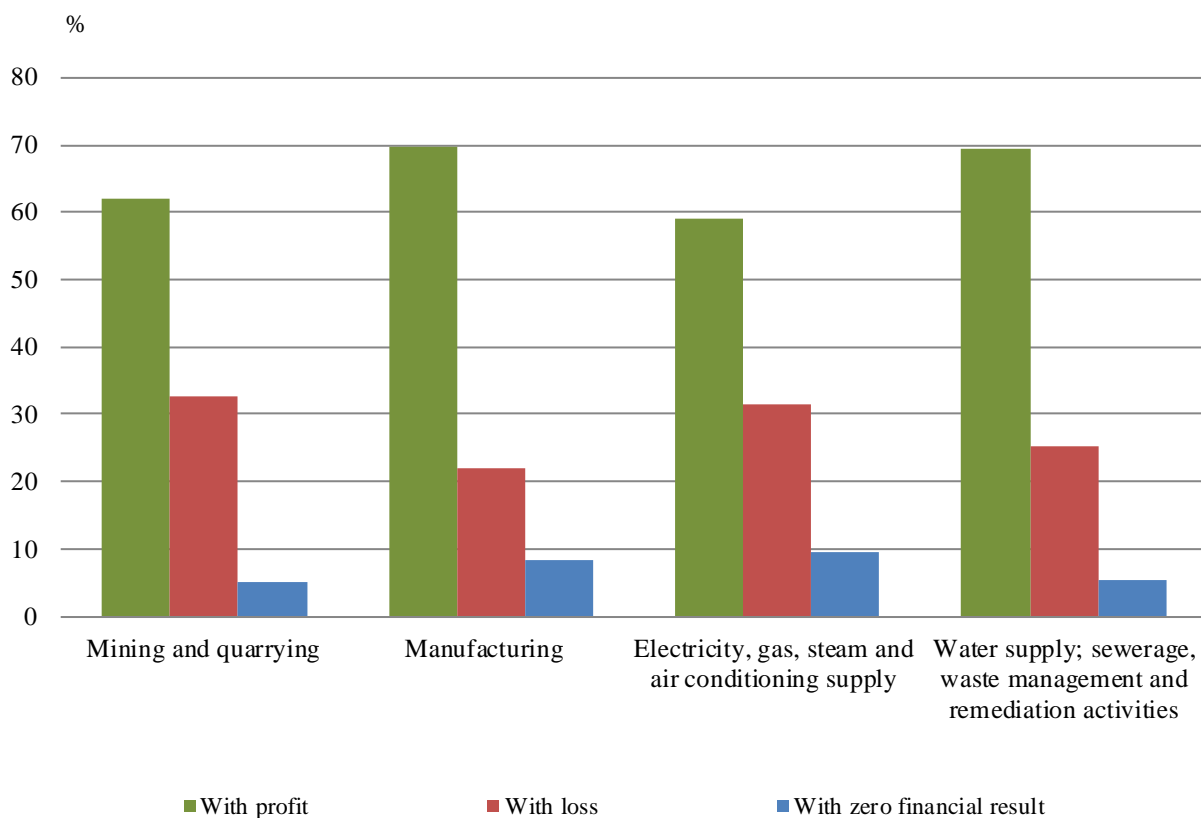
In 2020 the production value at current prices, manufactured by industrial sector amounted to 75 626 million BGN, which formed 39.8% of the total production value of non-financial enterprises. This sector employed 574 401 persons or 27.5% of the total number of persons employed in non-financial enterprises. Compared to 2019, the decline in persons employed in FTE was 6.2%.

Figure 5. Production value per employee by industrial sectors and by years



The industrial enterprises finished 2020 with a positive financial result of 4 977 million BGN at current prices. The largest contribution had sector ‘Manufacturing’, which formed 70.7% of that result.

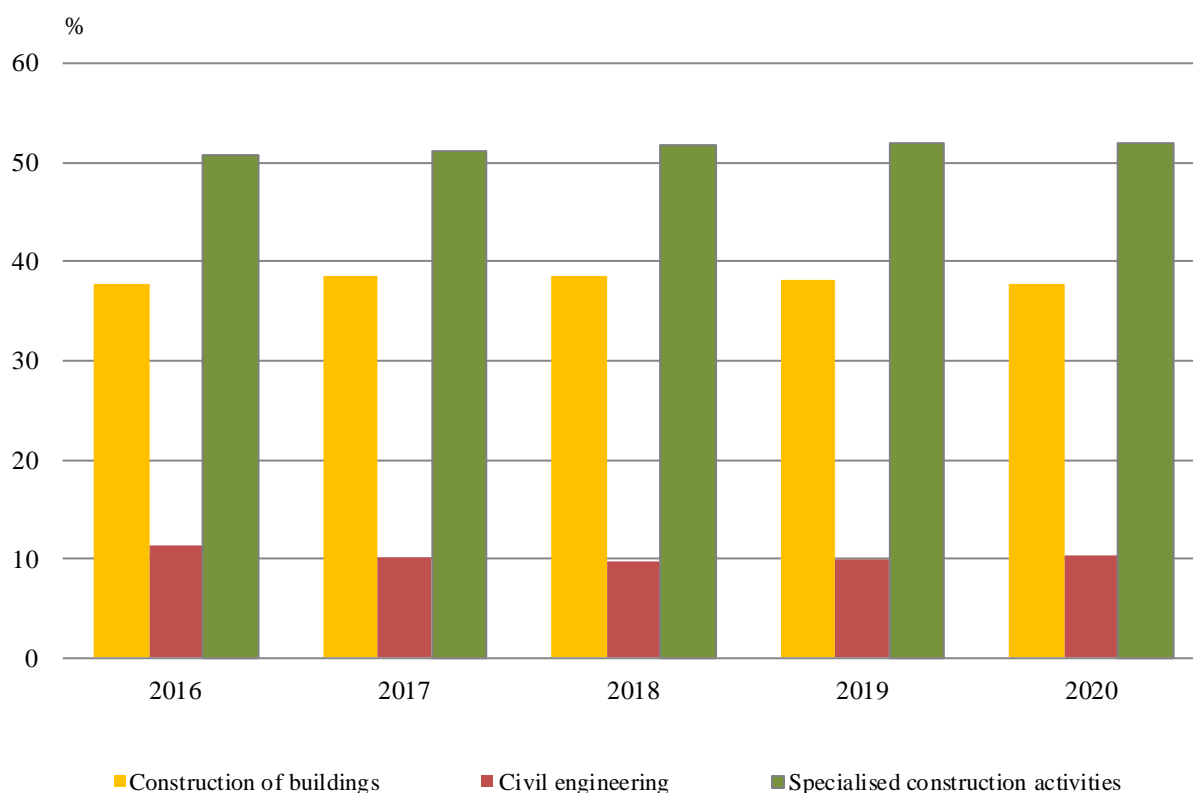
Figure 6. Percentage share of industrial enterprises according to the financial result for 2020



4. Construction

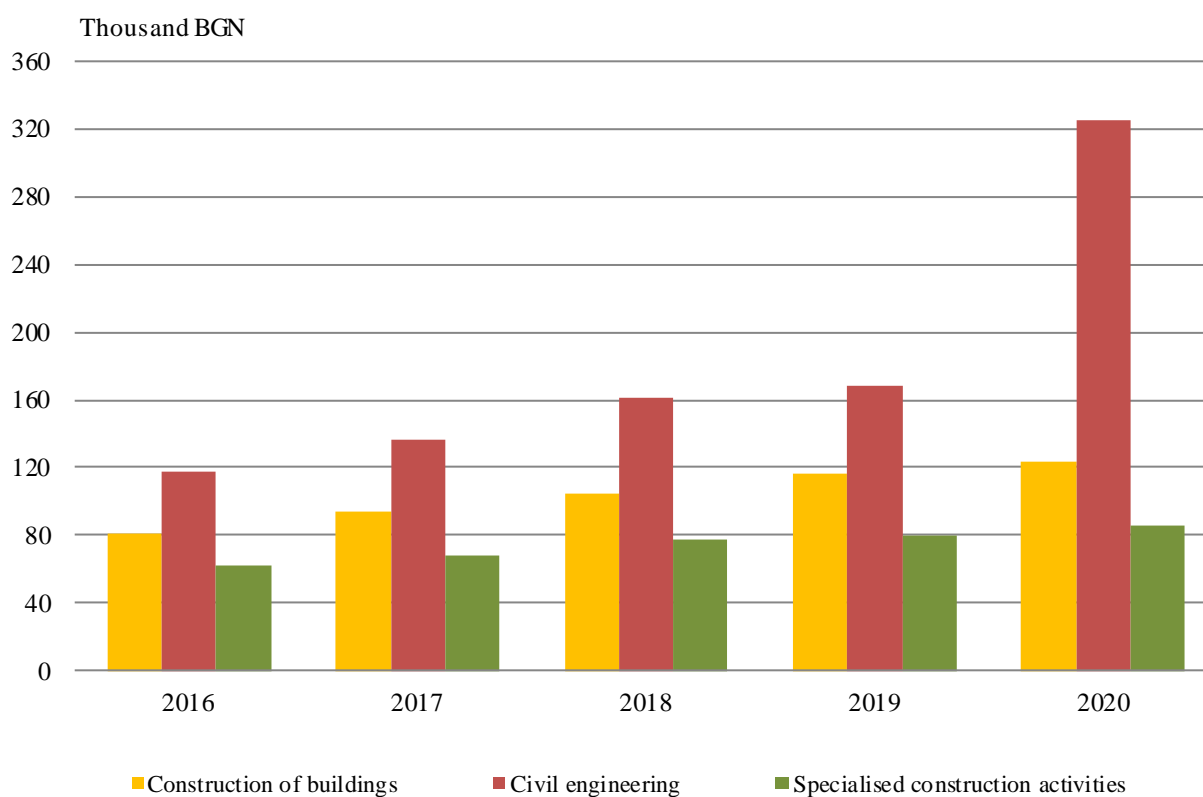
At the NSI 21 866 construction enterprises submitted annual reports on their activity for 2020 or 5.3% of the total number of the reported non-financial enterprises. The largest share had the enterprises engaged in specialized construction activities - 52.0%.

Figure 7. Percentage share of enterprises by construction activities and by years



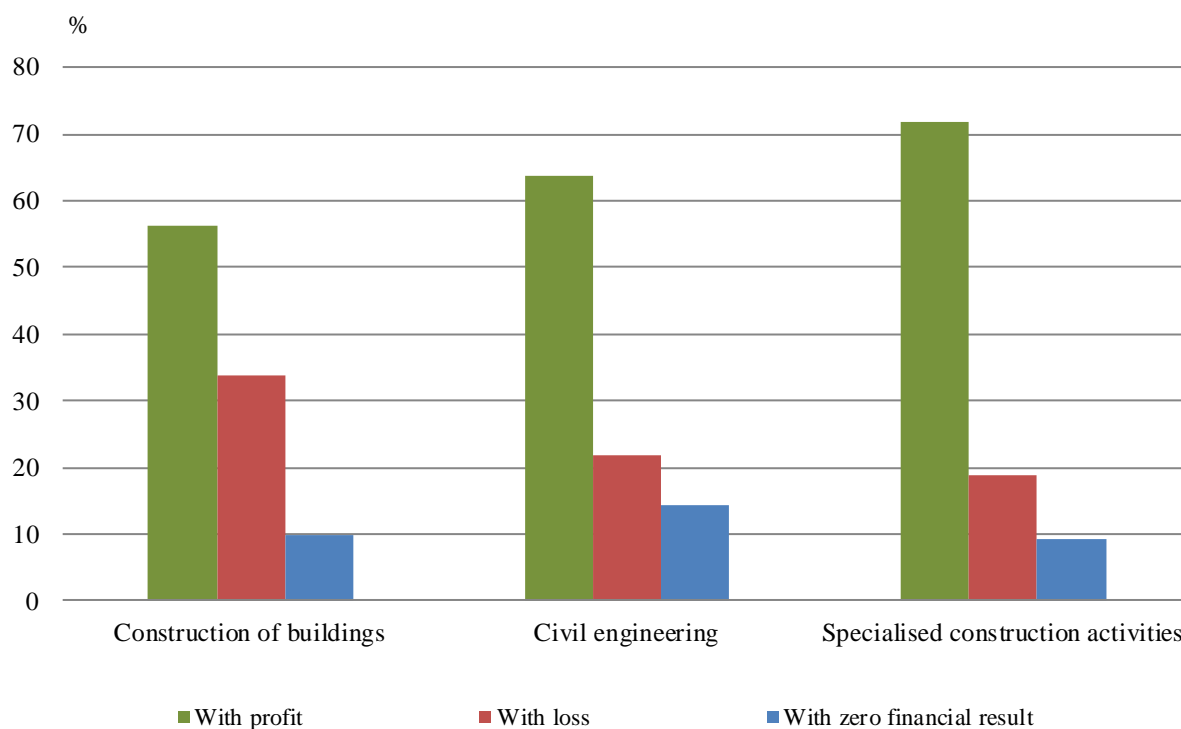
In 2020 the construction sector generated production value of 23 182 million BGN at current prices or 12.2% of the total production value of non-financial enterprises. The construction enterprises employed 145 379 persons or 6.9% of the total number of persons employed in non-financial enterprises. Compared to 2019, the decline in persons employed in FTE was 2.6%.

Figure 8. Production value per employee by construction activities and by years



The construction sector finished 2020 with a positive financial result of 1 995 million BGN at current prices.

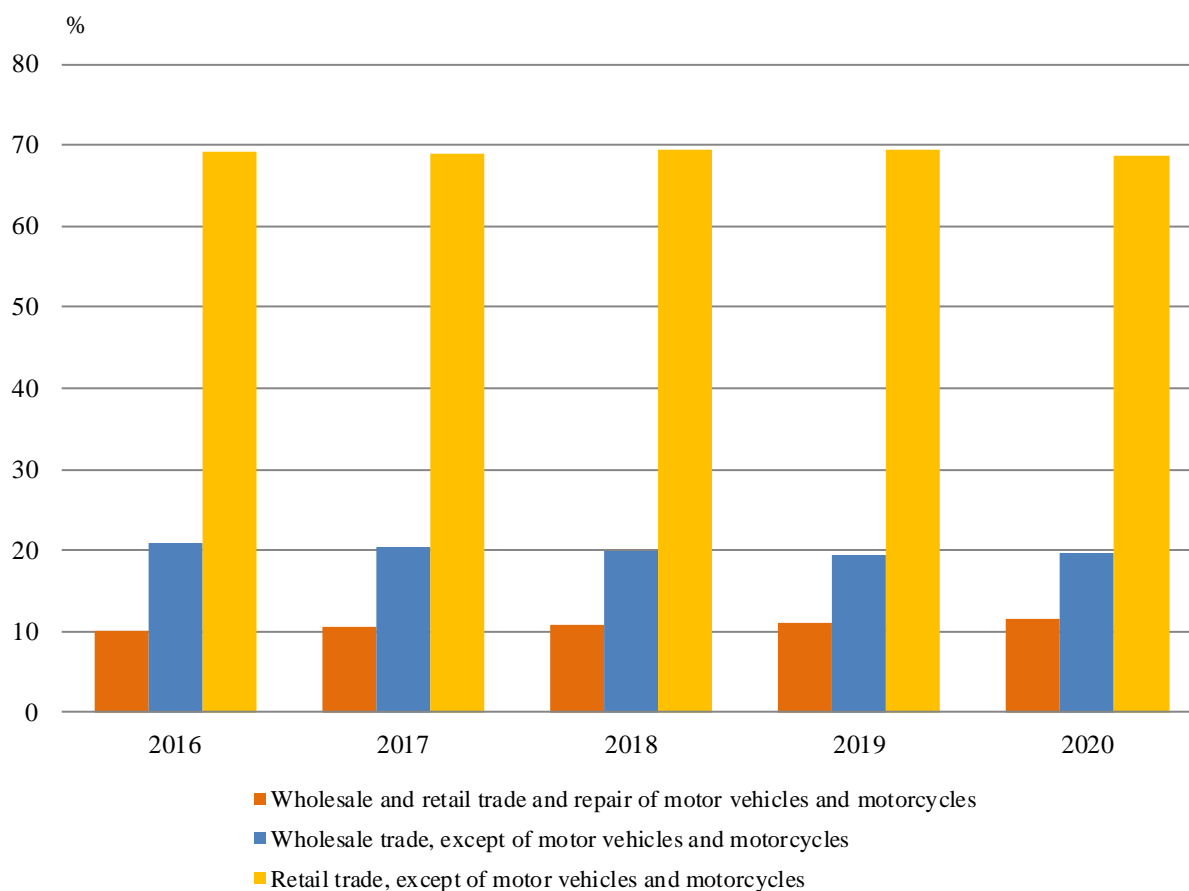
Figure 9. Percentage share of construction enterprises according to the financial result for 2020



5. Wholesale and retail trade; repair of motor vehicles and motorcycles

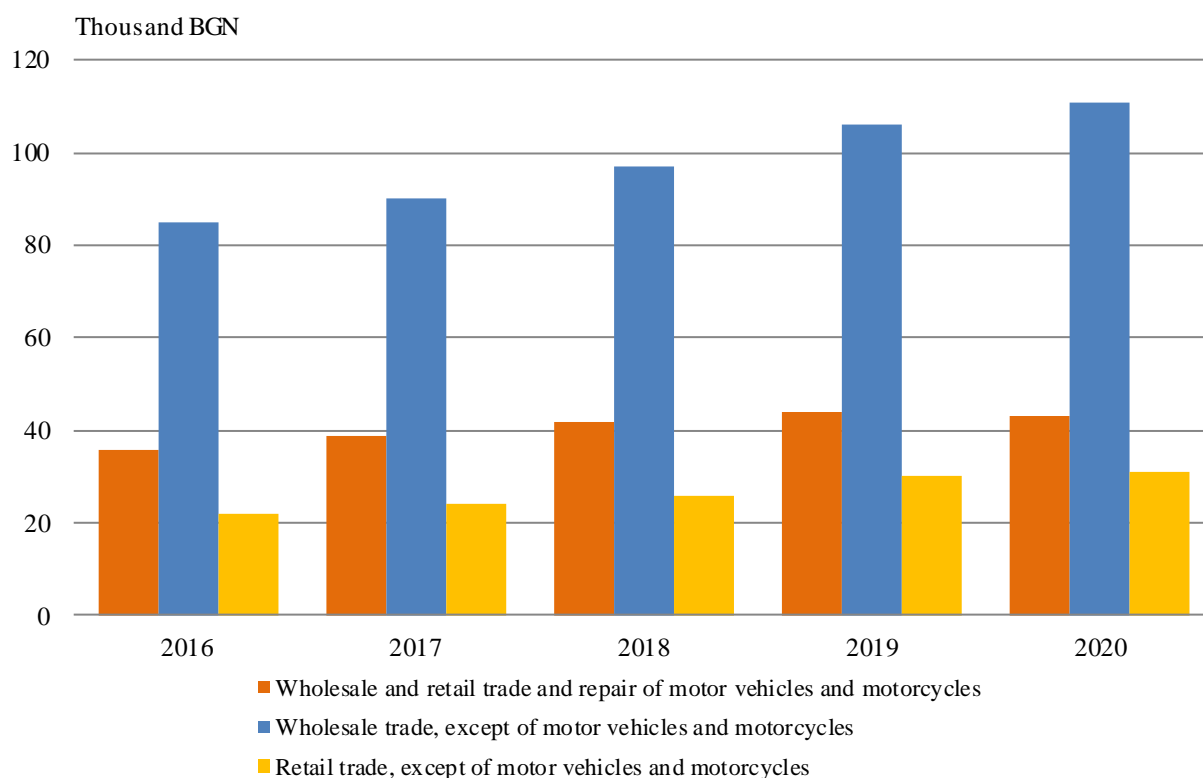
Annual reports on their activity for 2020 were submitted at the NSI by 139 003 trade enterprises or 33.9% of the total number of the reported non-financial enterprises. The largest share of all trade enterprises had 'Retail trade, except of motor vehicles and motorcycles' - 68.8%.

Figure 10. Percentage share of enterprises by trade activities and by years



In 2020 the trade sector generated production value of 27 344 million BGN at current prices or 14.4% of the total production value of non-financial enterprises. This sector engaged 476 169 persons or 22.8% of the total number of persons employed in non-financial enterprises. Compared to 2019, the decline in persons employed in FTE was 4.4%.

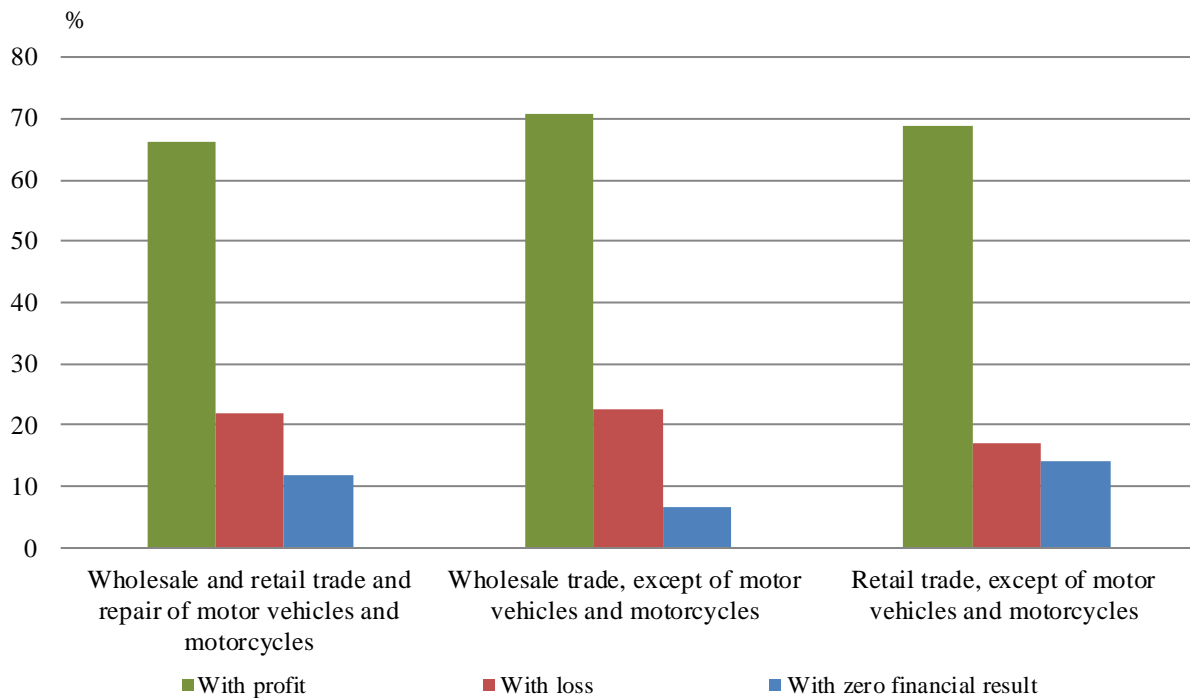
Figure 11. Production value per employee by trade activities and by years



www.nsi.bg

The trade enterprises realized a positive financial result of 5 201 million BGN in 2020 at current prices and 'Wholesale trade, except of motor vehicles and motorcycles' formed 68.4% of that result.

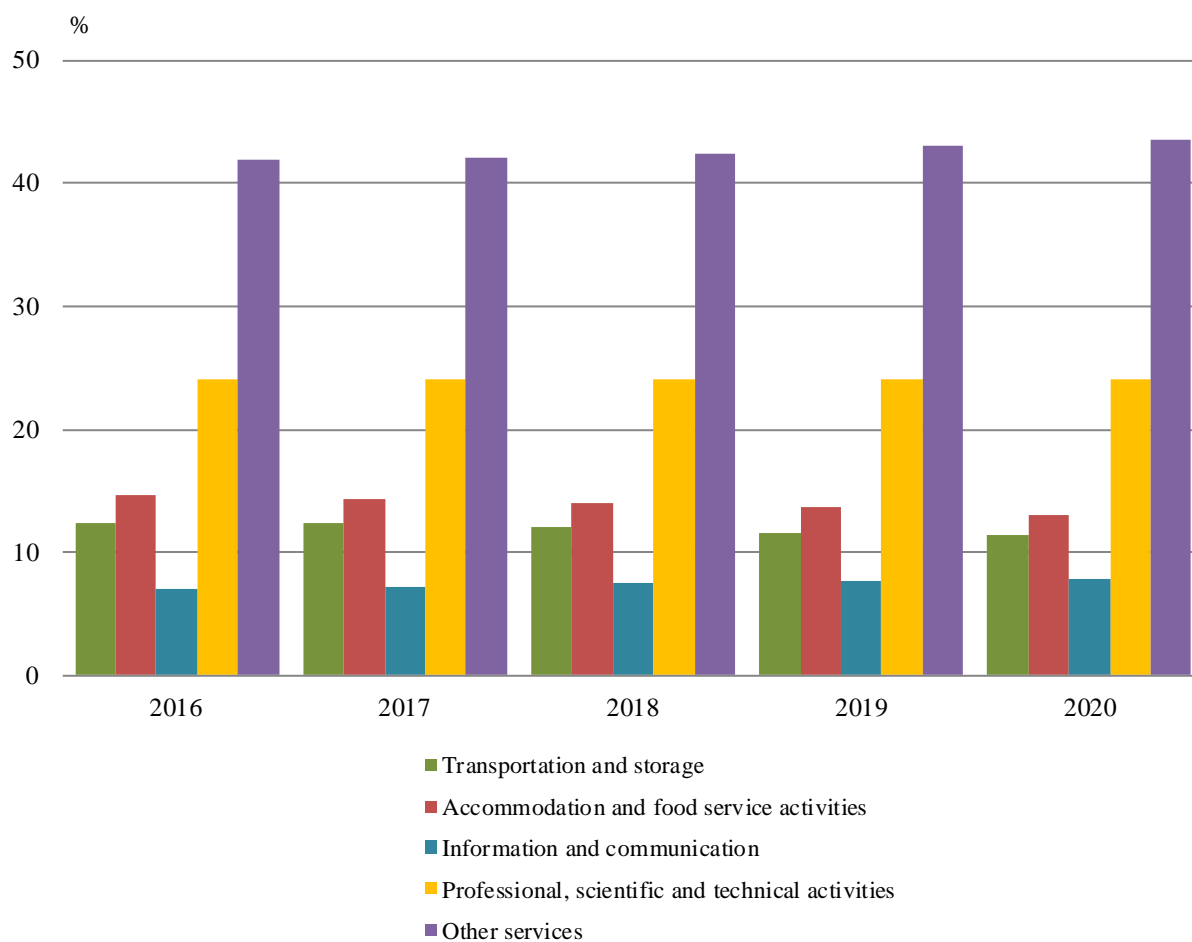
Figure 12. Percentage share of trade enterprises according to the financial result for 2020



6. Services

At the NSI 197 075 enterprises in service sector submitted annual reports on their activity for 2020 or 48.0% of the total number of reported non-financial enterprises.

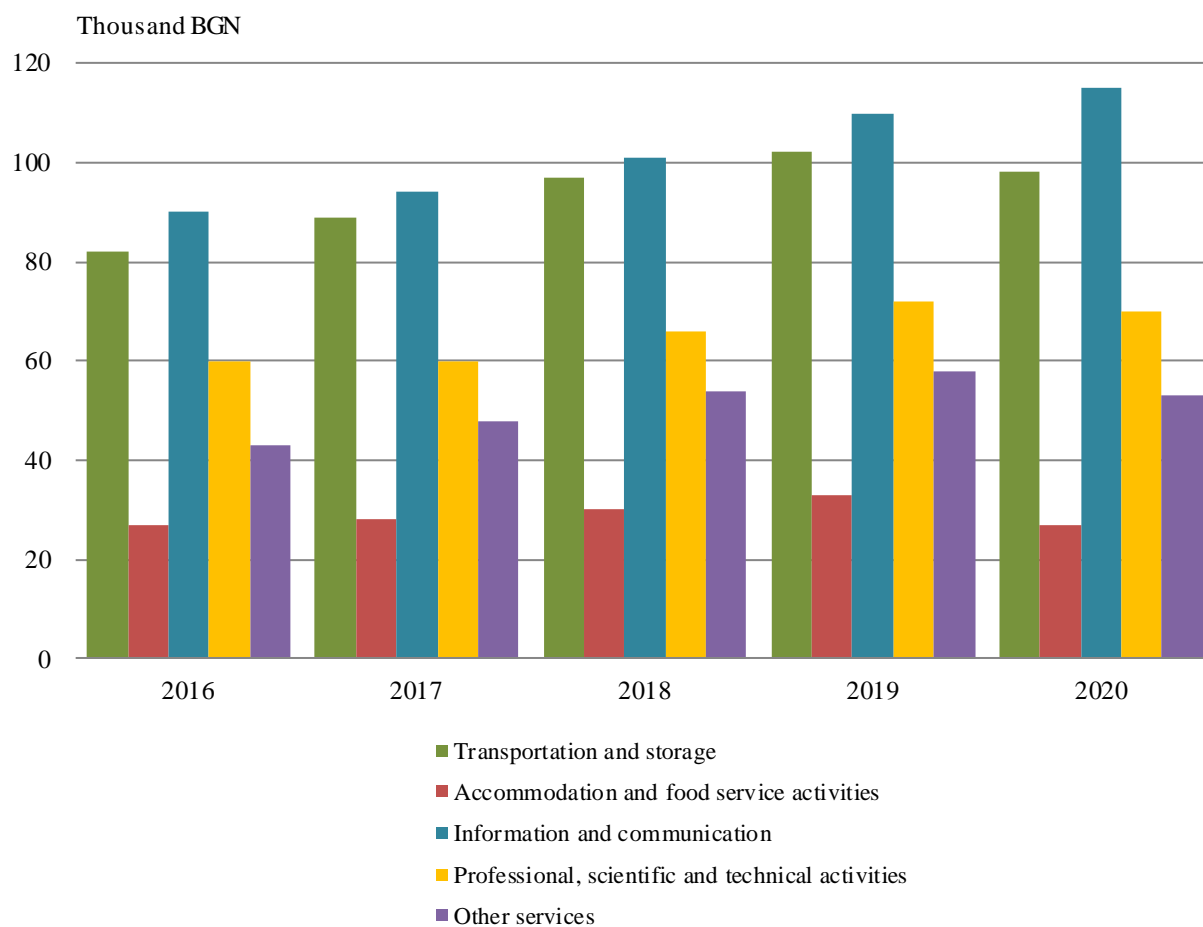
Figure 13. Percentage share of enterprises by type of services and by years



www.nsi.bg

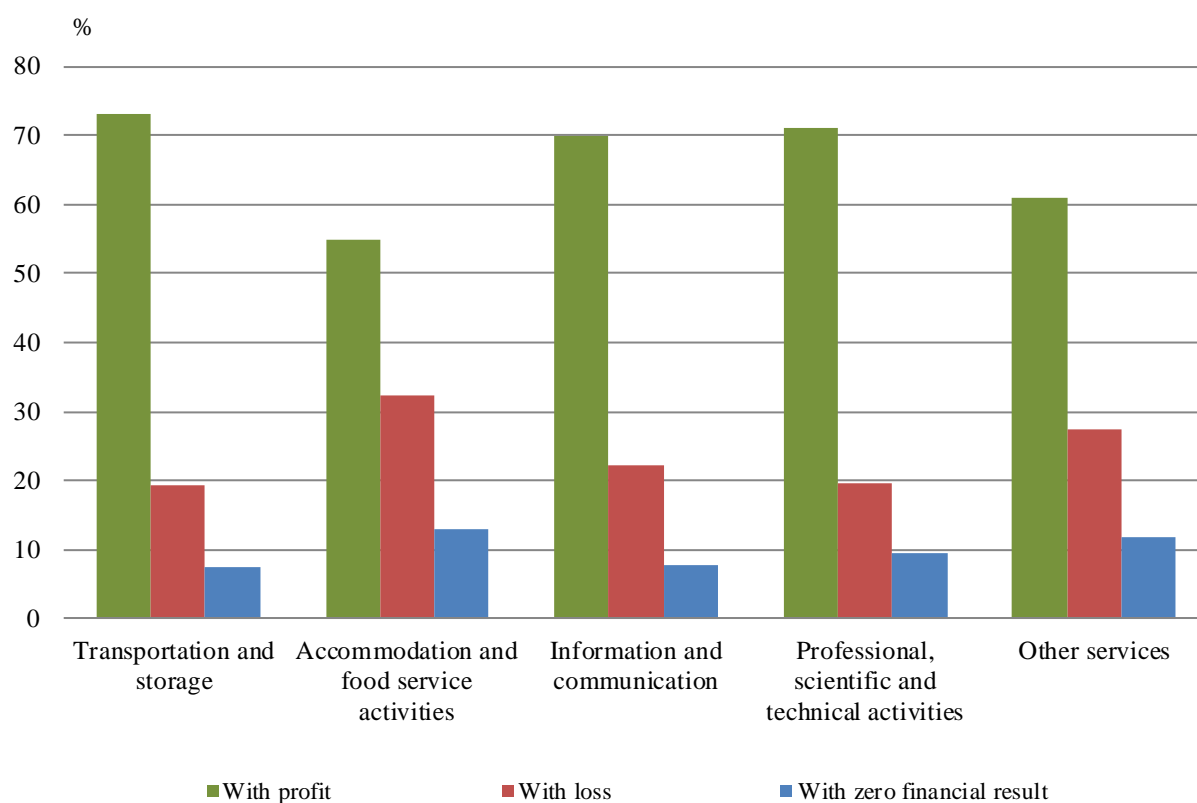
At current prices, in the service sector in 2020 was generated production value of 56 654 million BGN that formed 29.9% of the total production value of non-financial enterprises. This sector employed 814 489 persons in 2020 or 38.9% of the total number of persons employed in non-financial enterprises. Compared to 2019, the decline in persons employed in FTE was 6.0%.

Figure 14. Production value per employee by type of services and by years



The service sector finished 2020 with a positive financial result of 6 345 million BGN and 33.0% of that result were realized by 'Information and communication'. Only 'Accommodation and food service activities' finished 2020 with a negative financial result of 40 million BGN.

Figure 15. Percentage share of service enterprises according to the financial result for 2020



Methodological notes

Coverage - all sections by NACE Rev. 2 with the exception of ‘Financial and insurance activities’, ‘Public administration and defence, compulsory social security’, ‘Activities of membership organisations’ and ‘Activities of households’.

Number of enterprises - all non-financial enterprises, which were active during whole or part of the reference year and have submitted their annual reports in the National statistical Institute and/or National Revenue Agency.

Turnover - the value of all revenue from sales of own products, goods bought and sold in the same condition, services provided and raw materials sold, including accrued excise duties, which are invoiced during the reference period. It does not include the revenue from sales of fixed assets, the income from financing, the financial and the extraordinary revenue. The value of turnover does not include accrued taxes on the type of value added tax (VAT) which are charged to the end user.

Production value - the value of turnover, reduced by the balance sheet of assets sold without own fixed assets. The changes in stocks of products and work in progress, as well as the costs incurred to acquire the assets by economic means are also included.

Value added at factor cost - the production value, reduced by the amount of the excise duties and operating expenses, excluding those for the personnel and for depreciation, and increased by the income from financing.

Financial result - the difference between the profit and the loss for a given aggregation level.

Number of persons employed - all persons employed working in a given enterprise on full or part-time, including seasonal workers (converted into full-time equivalent), home workers, working owners, employees under contract for management and control, employees in civil contracts that do not work with another employer and unpaid family workers. It does not include those absent for an unlimited time, as well as those provided under contract by other companies.

Annex

Table 1

Economic indicators of non-financial enterprises for the period 2016 - 2020

Economic activities by NACE Rev. 2	Enterprises - number					Production value - million BGN ¹				
	2016	2017	2018	2019	2020*	2016	2017	2018	2019	2020*
Non-financial enterprises	404937	406310	413535	419681	410785	151284	168150	180987	194337	189813
Agriculture, forestry and fishing	19908	19880	19923	19265	19049	6320	6827	7358	7342	7007
Mining and quarrying	407	374	368	343	351	2497	2852	2759	2587	3097
Manufacturing	31962	31733	31874	31601	30478	55236	62623	65631	68924	63716
Electricity, gas, steam and air conditioning supply	1871	1786	1790	1820	2137	7648	7739	7003	7263	7049
Water supply; sewerage, waste management and remediation activities	872	826	823	843	826	1482	1553	1697	1832	1764
Construction	20533	20370	20936	21580	21866	11559	13452	15748	17311	23182
Wholesale and retail trade; repair of motor vehicles and motorcycles	142830	142174	142938	143555	139003	21154	23046	24669	27409	27344
Transportation and storage	23006	23355	23449	23304	22528	13443	14784	16245	17065	15778
Accommodation and food service activities	27456	27299	27330	27473	25557	3549	3879	4225	4584	2907
Information and communication	13063	13700	14513	15375	15614	8394	9293	10610	12408	13325
Real estate activities	23635	23280	24031	25083	25507	2890	3571	4074	3996	3673
Professional, scientific and technical activities	44749	45309	46935	48129	47566	6208	6407	7202	8165	7662
Administrative and support service activities	11323	11579	11885	12200	11799	3634	4056	4578	5081	4925
Education	3499	3761	3949	4236	4208	264	293	357	391	372
Human health and social work activities	13847	13925	14140	14281	14276	3484	3840	4223	4618	5035
Arts, entertainment and recreation	5555	5842	6209	6574	5800	3034	3318	3838	4458	2232
Repair of computers and communication equipment; other personal service activities	20421	21117	22442	24019	24220	488	617	770	903	745

Table 1

Economic indicators of non-financial enterprises for the period 2016 - 2020

(Continued and end)

Economic activities by NACE Rev. 2	Value added - million BGN ¹					Persons employed - number				
	2016	2017	2018	2019	2020*	2016	2017	2018	2019	2020*
Non-financial enterprises	54033	59980	64135	70781	72288	2156511	2193508	2208432	2210488	2092062
Agriculture, forestry and fishing	2636	2947	3070	2947	3066	87768	86888	86615	84678	81624
Mining and quarrying	1100	1419	1331	1213	1788	23963	21843	21522	19022	20086
Manufacturing	13953	15189	15231	16265	15784	539111	546441	544545	529865	491421
Electricity, gas, steam and air conditioning supply	3409	3537	3634	4081	3873	31926	31549	31570	31234	31148
Water supply; sewerage, waste management and remediation activities	753	798	843	920	971	33031	32332	32398	32365	31746
Construction	2680	3112	3639	4205	5227	137468	140936	144621	149229	145379
Wholesale and retail trade; repair of motor vehicles and motorcycles	10349	11397	12077	13493	14346	490658	496406	495238	498045	476169
Transportation and storage	4267	4573	4944	5326	5119	163141	165912	166943	166767	160234
Accommodation and food service activities	1548	1798	1891	2105	1383	133011	137778	139151	140879	108086
Information and communication	4563	5208	6014	7338	8186	93216	99214	105344	112415	115559
Real estate activities	1174	1540	1970	1742	1650	35371	36758	37777	38287	37922
Professional, scientific and technical activities	2776	3088	3421	4249	3943	103044	106432	109857	112683	109799
Administrative and support service activities	1669	1931	2180	2527	2518	107709	109379	110037	109272	105013
Education	142	160	197	222	229	10471	11344	11674	12384	11952
Human health and social work activities	1960	2157	2413	2736	3189	106667	107165	107253	107797	107588
Arts, entertainment and recreation	832	864	966	1089	708	24664	26462	26555	26795	21731
Repair of computers and communication equipment; other personal service activities	222	262	314	323	308	35292	36669	37332	38771	36605

¹ Data at current prices.

* Preliminary data.

Table 2

Financial results of non-financial enterprises for the period 2016 - 2020

Economic activities by NACE Rev. 2	Financial result - million BGN ¹				
	2016	2017	2018	2019	2020*
Non-financial enterprises	13457	16726	17061	19208	19499
Agriculture, forestry and fishing	836	1116	1089	972	981
Mining and quarrying	239	293	367	116	631
Manufacturing	3771	4697	3454	3781	3520
Electricity, gas, steam and air conditioning supply	412	453	321	907	648
Water supply; sewerage, waste management and remediation activities	119	153	150	157	178
Construction	446	829	945	1303	1995
Wholesale and retail trade; repair of motor vehicles and motorcycles	3584	4118	4353	4710	5201
Transportation and storage	929	819	945	1040	795
Accommodation and food service activities	217	318	262	208	-40
Information and communication	702	760	1069	1592	2096
Real estate activities	-91	531	1074	593	414
Professional, scientific and technical activities	1346	1712	1800	2448	1812
Administrative and support service activities	280	159	335	402	416
Education	21	22	24	28	32
Human health and social work activities	198	256	328	427	550
Arts, entertainment and recreation	376	386	424	411	167
Repair of computers and communication equipment; other personal service activities	72	104	121	113	103

¹ Data at current prices.

* Preliminary data.

Table 3

Total Production, selected manufactured products for the period 2018 - 2020

Products	Unit	2018	2019	2020*	2020/2019 (%)
Copper ores and concentrates	thous. t	31258	31623	32407	102.5
Lead, zinc and tin ores and concentrates	thous. t	868	898	825	91.9
Sausages and similar products of meat, offal or blood and food preparations based thereon (excluding liver sausages and prepared meals and dishes)	thous. t	100	100	102	102.0
Refined sunflower-seed and safflower oil and their fractions (excluding chemically modified)	thous. t	171	166	151	91.0
Jams, marmalades, fruit jellies, purees and pastes	t	11646	12522	11319	90.4
Uncooked pasta (excluding containing eggs, stuffed or otherwise prepared)	t	9346	8987	11042	122.9
Rice	t	26653	25564	23247	90.9
Spirits obtained from distilled grape wine or grape marc	thous. l alc 100%	8074	7609	5969	78.4
Beer made from malt (excluding non-alcoholic beer, beer containing ≤ 0.5% by volume of alcohol)	mln. l	528	491	445	90.6
Waters, with added sugar, other sweetening matter or flavored, i.e. soft drinks (including mineral and aerated)	mln. l	469	512	497	97.1
Cigarettes containing tobacco or mixtures of tobacco and tobacco substitutes	mln. units	14242	
Fabrics of cotton	thous. sq. m	7352	6470	6014	93.0
Particle board, of wood	thous. cub. m	609	610	717	117.5
Toothpaste	thous. units	79930	78658	75334	95.8
Denatured ethyl alcohol and other denatured spirits; of any strength	thous. l	43160	51188	59375	116.0
Shampoos	t	5671	5130	4911	95.7
Non-refractory clay building bricks	thous. cub. m	605	572	484	84.6
Portland cement	thous. t	2300	2437	2243	92.0
Quicklime, slaked lime and hydraulic lime	thous. t	1545	1457	1274	87.4
Ready-mixed concrete	thous. t	10876	12373	11671	94.3
Electrical instantaneous or storage water heaters and immersion heaters	thous. units	1088	1168	1198	102.6
Self-propelled fork-lift trucks powered by an electric motor, with a lifting height ≥ 1 m	units	201	62	42	67.7
Self-propelled trucks fitted with lifting or handling equipment, non-powered by an electric motor	units	167	80	58	72.5
Domestic electric cookers with at least an oven and a hob	units	26757	
Accounting machines and similar machines incorporating a calculating device; ticket-issuing machines; automatic cash register; word - processing machines (without typewriters)	thous. units	753	778	1194	153.5
Bicycles	thous. units	713	638	438	68.7

* Data is preliminary and sample-based (based on an annual sample).

„...“ - Confidential data.