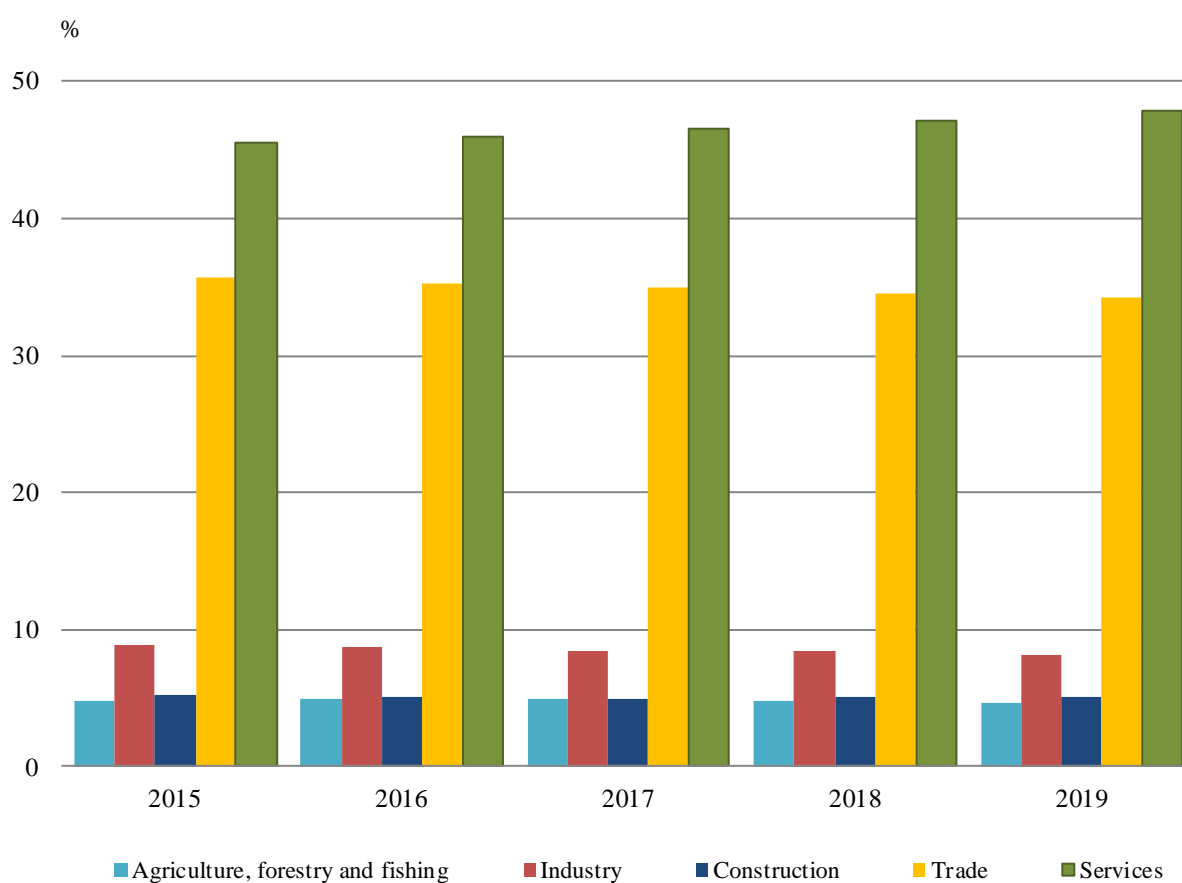


ACTIVITY OF NON-FINANCIAL ENTERPRISES¹ FOR 2019 (PRELIMINARY DATA)

1. Overview

Annual reports on their activity for 2019 were submitted at the National Statistical Institute (NSI) by 418 616 non-financial enterprises.

Figure 1. Percentage share of enterprises by economic sectors and by years



According to preliminary data in 2019 the number of persons employed in the non-financial enterprises was 2 211 342, the production value at current prices amounted to 194 504 million BGN and a positive financial result of 19 259 million BGN was realized.

¹ The non-financial enterprises include all sections by NACE Rev. 2 with the exception of 'Financial and insurance activities', 'Public administration and defence, compulsory social security', 'Activities of membership organisations' and 'Activities of households'.

Figure 2. Production value per employee by economic sectors and by years

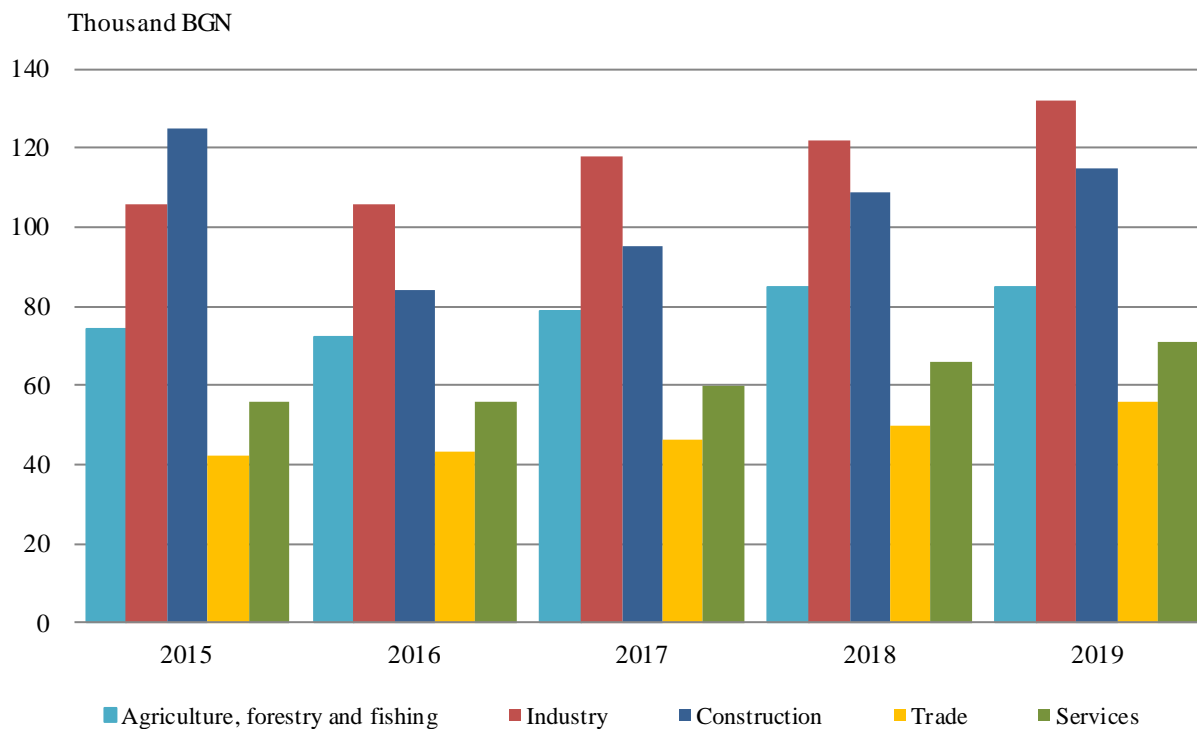
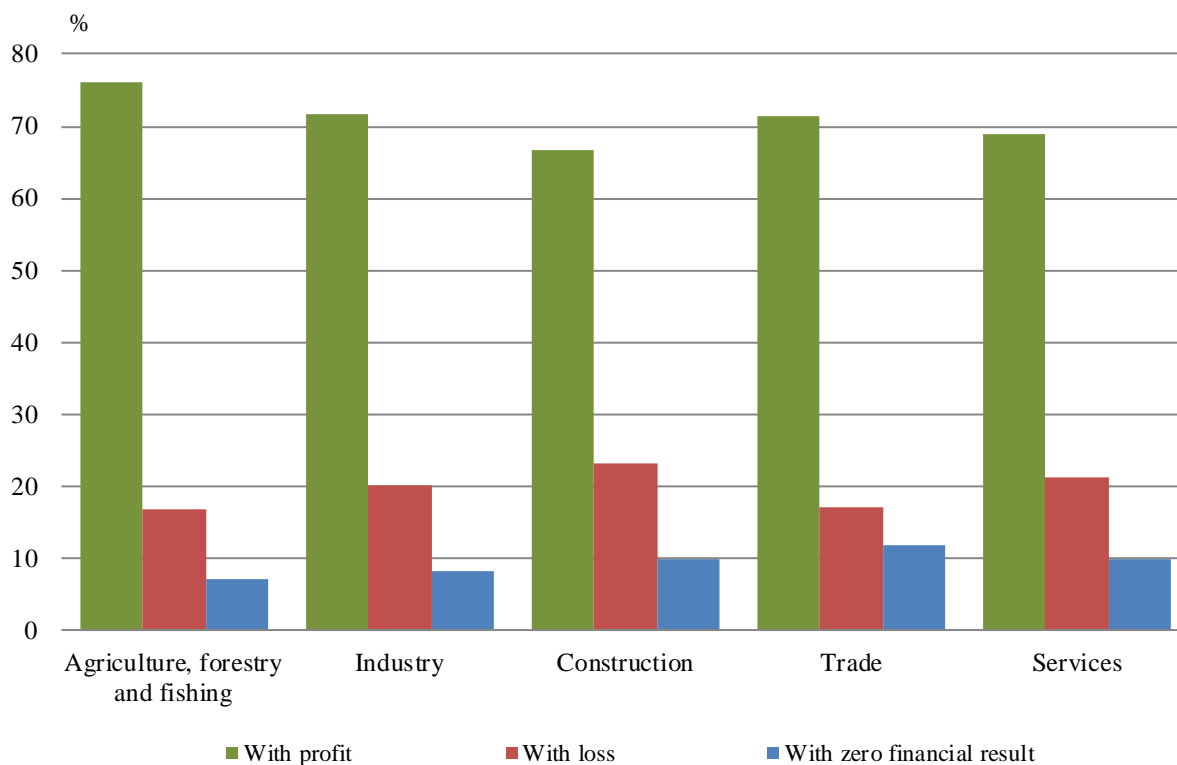


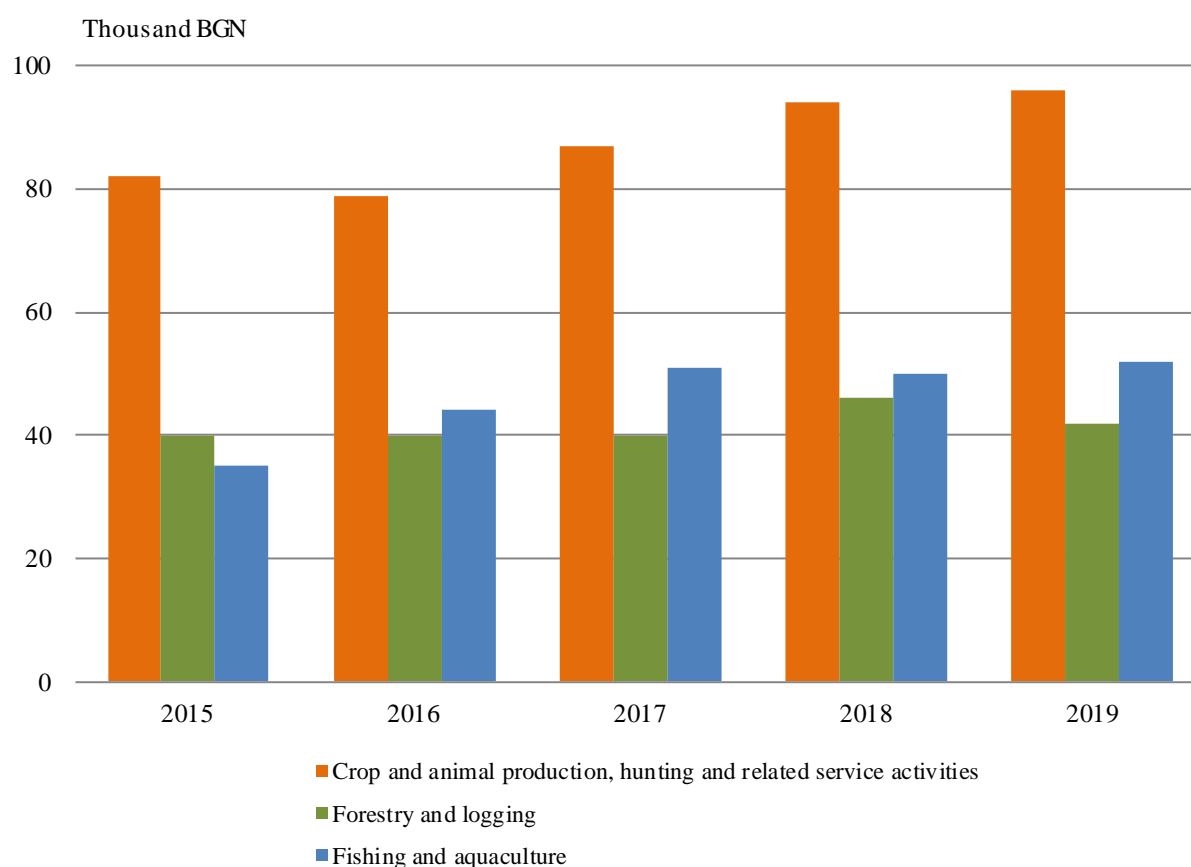
Figure 3. Percentage share of enterprises according to the financial result by economic sectors for 2019



2. Agriculture, Forestry and Fishing

At the NSI 19 184 enterprises in sector ‘Agriculture, Forestry and Fishing’ submitted annual reports on their activity for 2019 or 4.6% of the total number of the reported non-financial enterprises. These enterprises generated production value of 7 349 million BGN at current prices and employed 86 087 persons. A positive financial result of 975 million BGN was reported, as 76.1% of the enterprises finished 2019 with profit, 16.9% - with loss and 7.0% with zero financial result.

Figure 4. Production value per employee by Agriculture, Forestry and Fishing sectors and by years

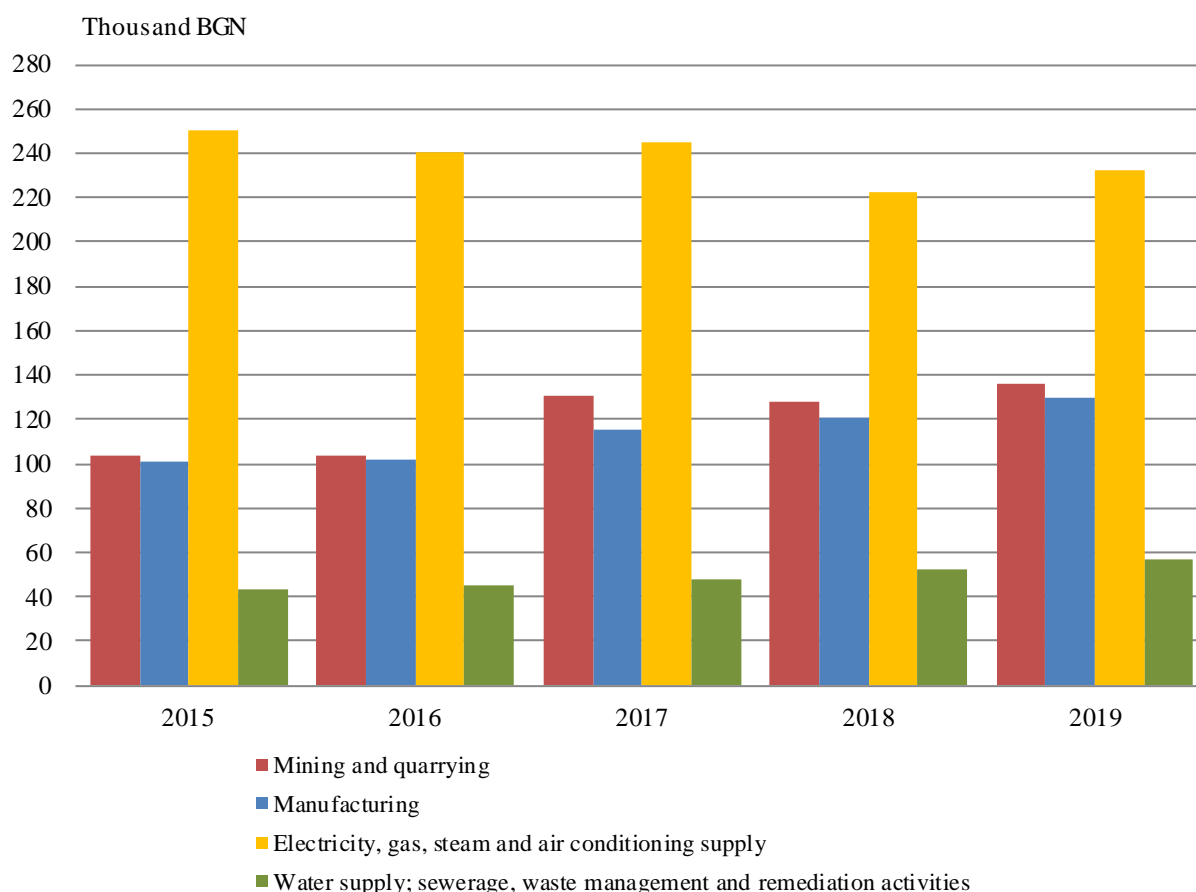


3. Industry

Annual reports on their activities for 2019 were submitted in NSI by 34 551 industrial enterprises or 8.2% of the total number of the reported non-financial enterprises at the NSI, as the largest share had sector 'Manufacturing' - 91.3%.

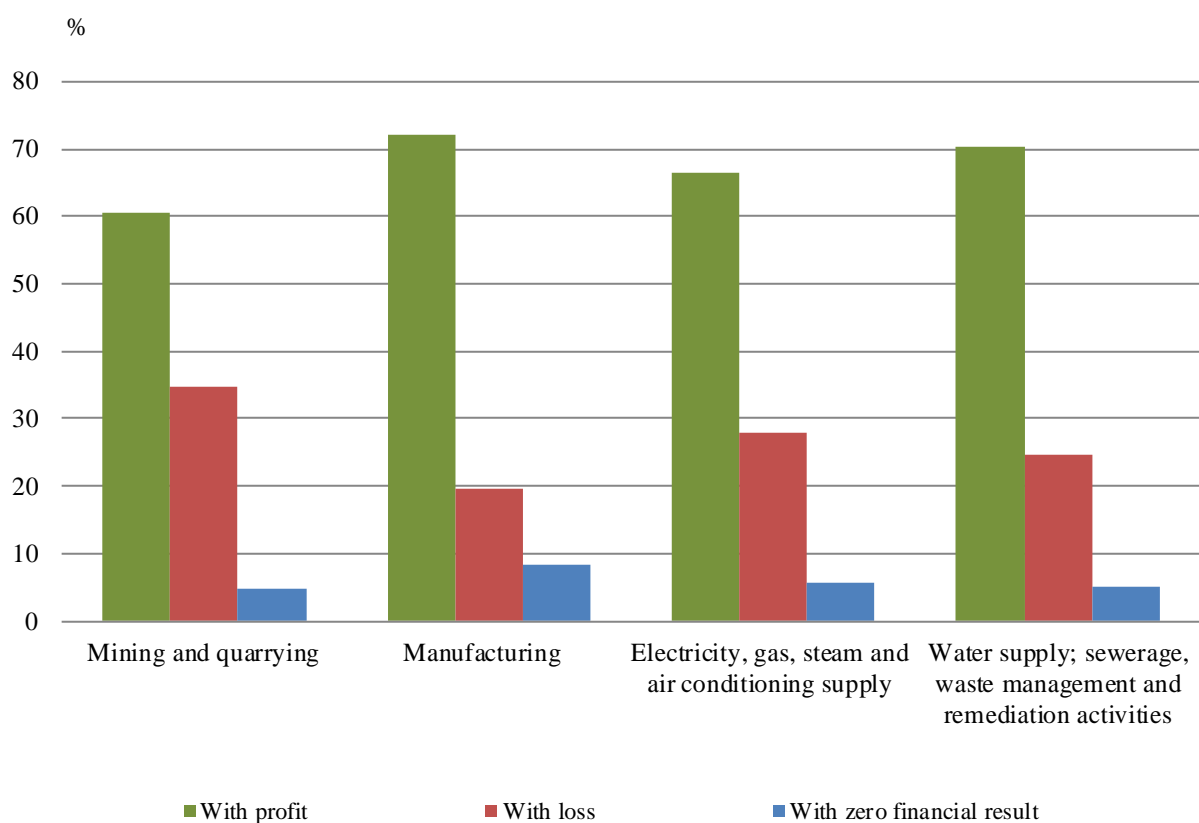
In 2019 the production value at current prices, manufactured by industrial sector amounted to 80 496 million BGN, which formed 41.4% of the total production value of non-financial enterprises. This sector employed 612 127 persons or 27.7% of the total number of persons employed in non-financial enterprises.

Figure 5. Production value per employee by industrial sectors and by years



The industrial enterprises finished 2019 with a positive financial result of 4 973 million BGN at current prices. The largest contribution had sector ‘Manufacturing’, which formed 76.2% of that result.

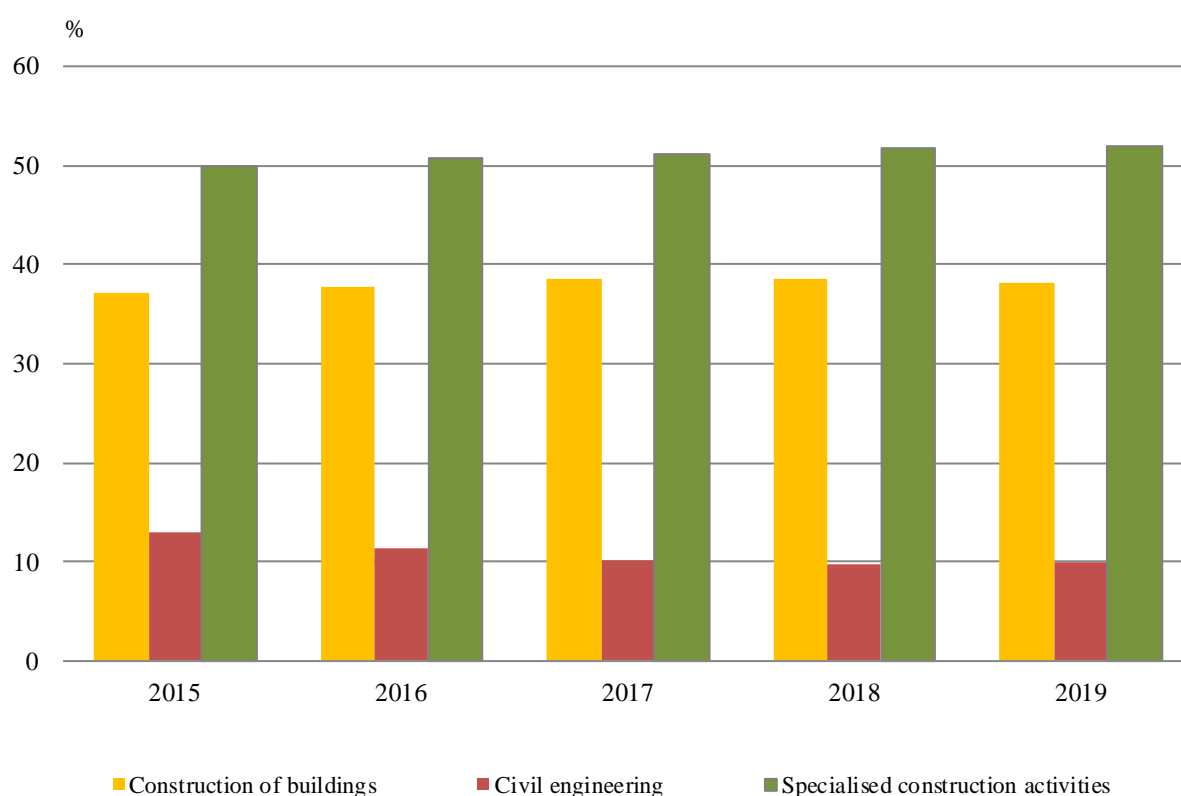
Figure 6. Percentage share of industrial enterprises according to the financial result for 2019



4. Construction

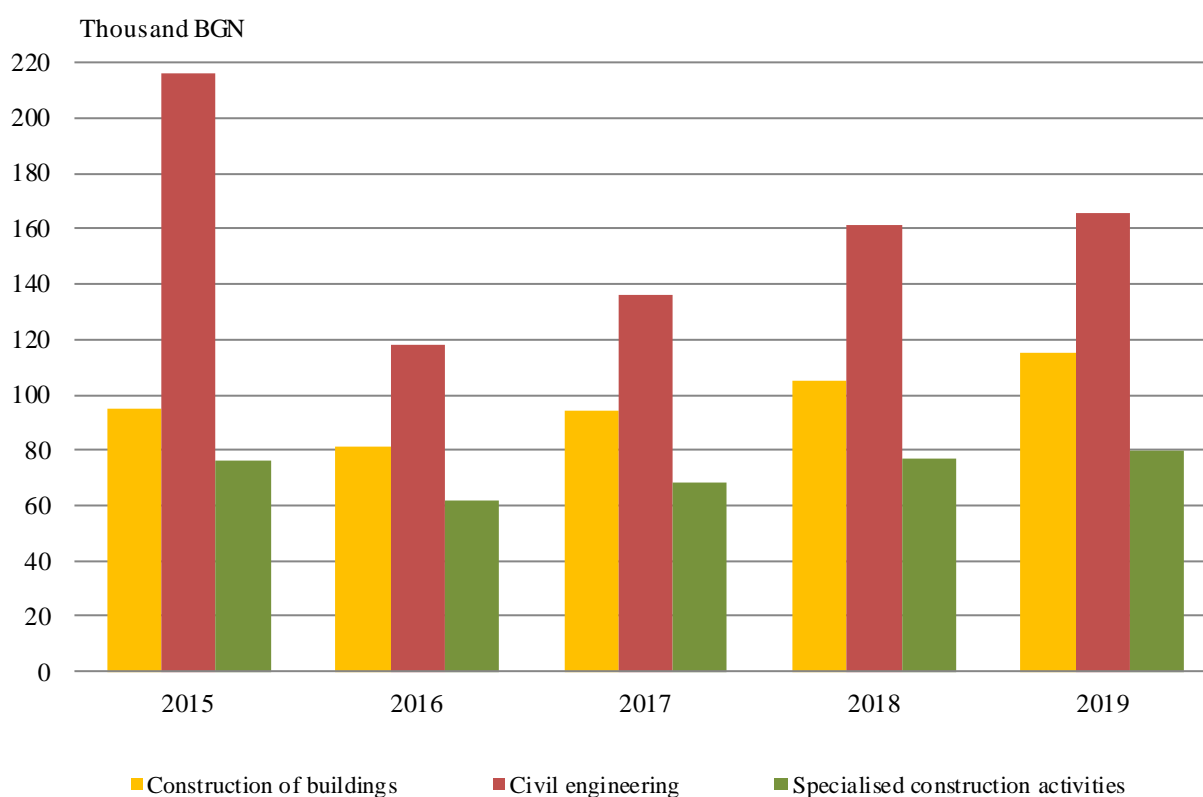
At the NSI 21 515 construction enterprises submitted annual reports on their activity for 2019 or 5.1% of the total number of the reported non-financial enterprises. The largest share had the enterprises engaged in specialized construction activities - 51.9%.

Figure 7. Percentage share of enterprises by construction activities and by years



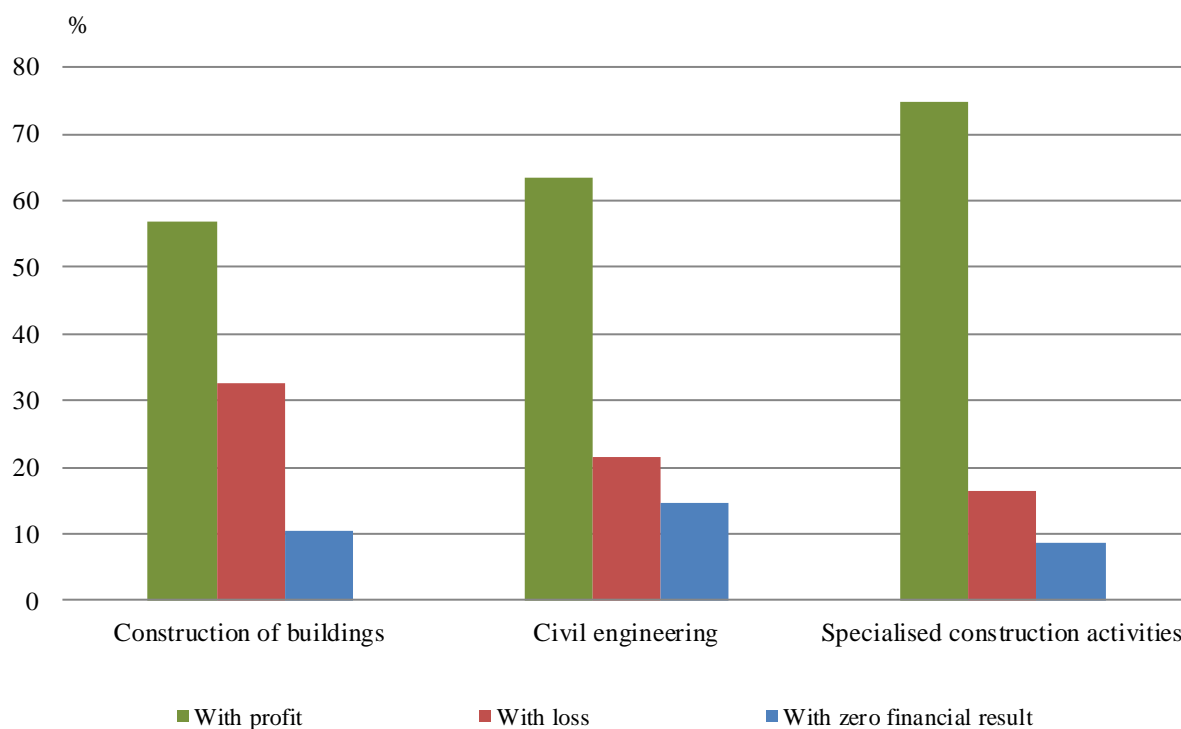
In 2019 the construction sector generated production value of 17 232 million BGN at current prices or 8.8% of the total production value of non-financial enterprises. The construction enterprises employed 149 544 persons or 6.8% of the total number of persons employed in non-financial enterprises.

Figure 8. Production value per employee by construction activities and by years



The construction sector finished 2019 with a positive financial result of 1 299 million BGN at current prices.

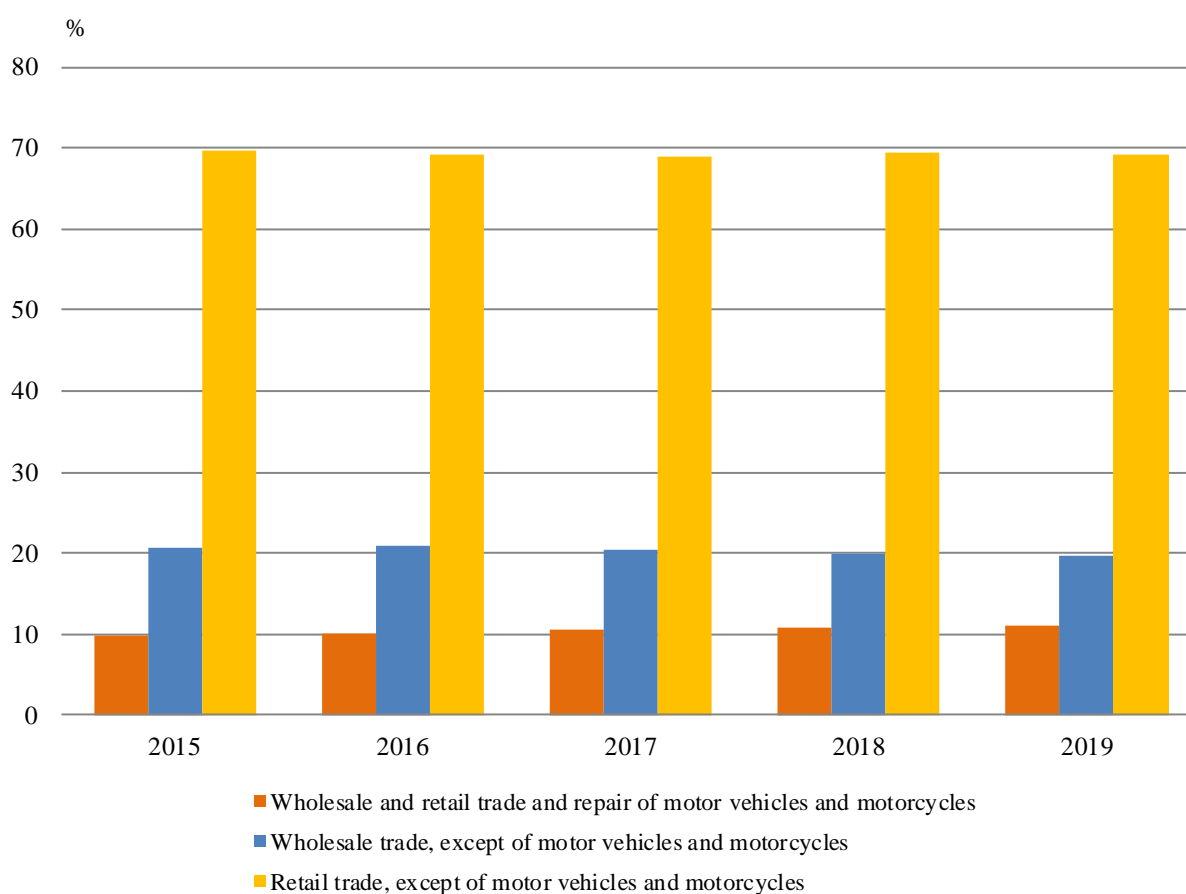
Figure 9. Percentage share of construction enterprises according to the financial result for 2019



5. Wholesale and retail trade; repair of motor vehicles and motorcycles

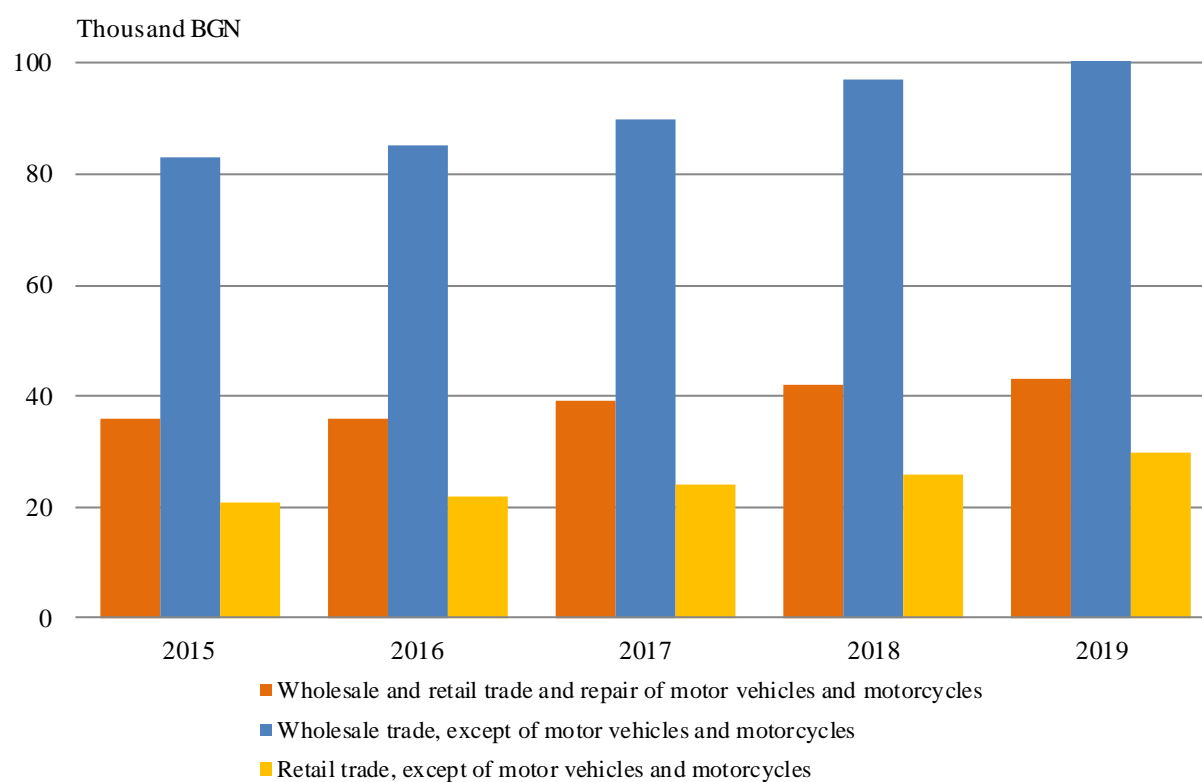
Annual reports on their activity for 2019 were submitted at the NSI by 143 024 trade enterprises or 34.2% of the total number of the reported non-financial enterprises. The largest share of enterprises had 'Retail trade, except of motor vehicles and motorcycles' - 69.3% of the trade enterprises.

Figure 10. Percentage share of enterprises by trade activities and by years



In 2019 the trade sector generated production value of 27 939 million BGN at current prices or 14.4% of the total production value of non-financial enterprises. This sector engaged 497 905 persons or 22.5% of the total number of persons employed in non-financial enterprises.

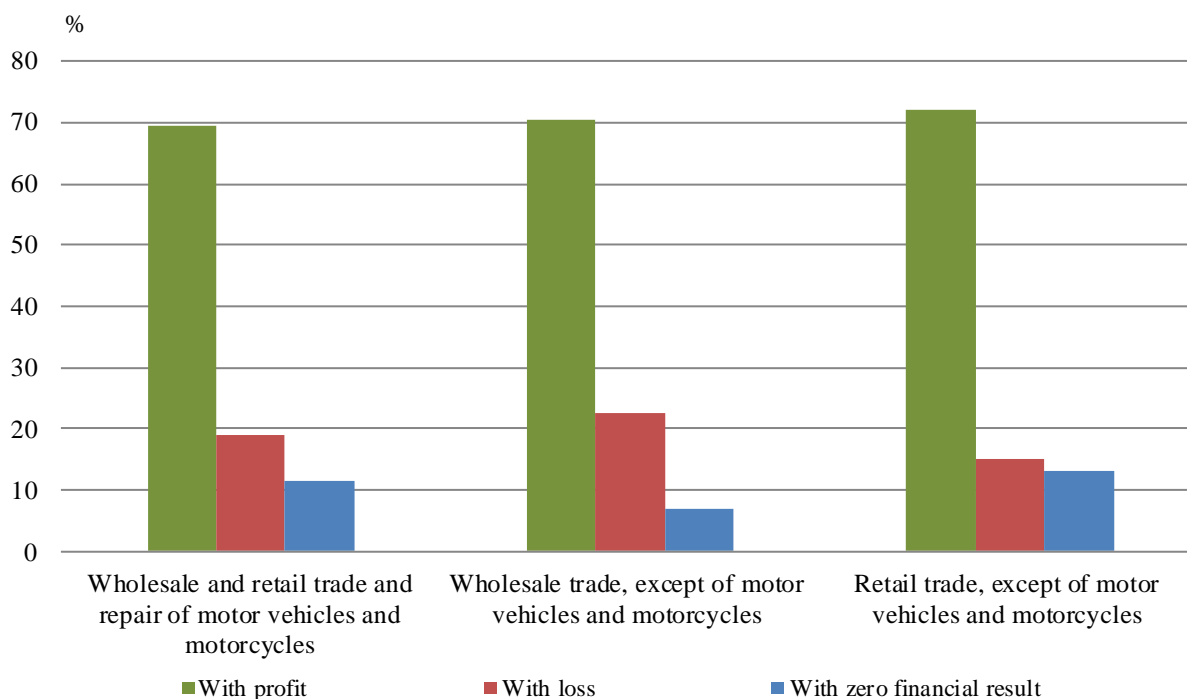
Figure 11. Production value per employee by trade activities and by years



www.nsi.bg

The trade enterprises realized a positive financial result of 4 726 million BGN in 2019 at current prices and ‘Wholesale trade, except of motor vehicles and motorcycles’ formed 67.4% of that result.

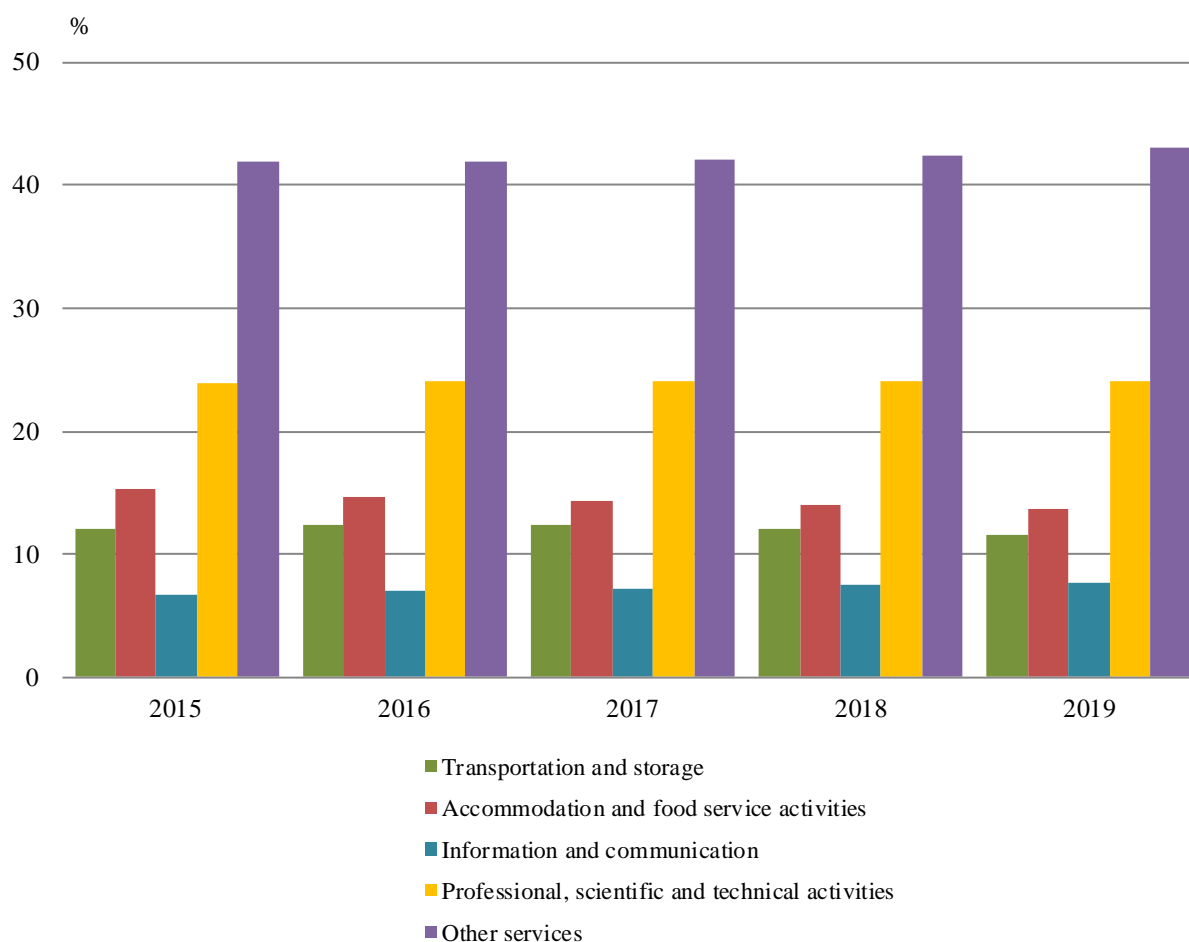
Figure 12. Percentage share of trade enterprises according to the financial result for 2019



6. Services

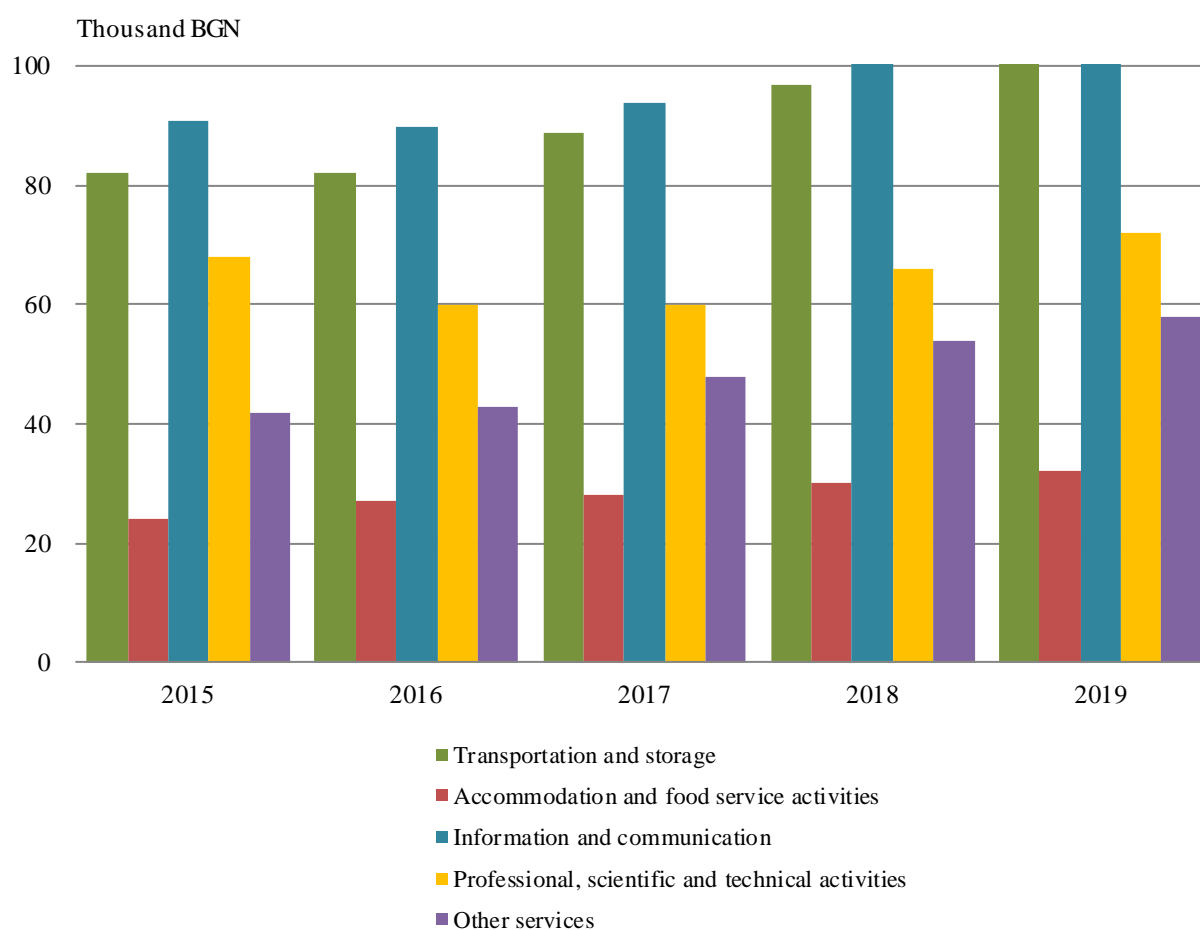
At the NSI 200 342 enterprises in service sector submitted annual reports on their activity for 2019 or 47.9% of the total number of reported non-financial enterprises.

Figure 13. Percentage share of enterprises by type of services and by years



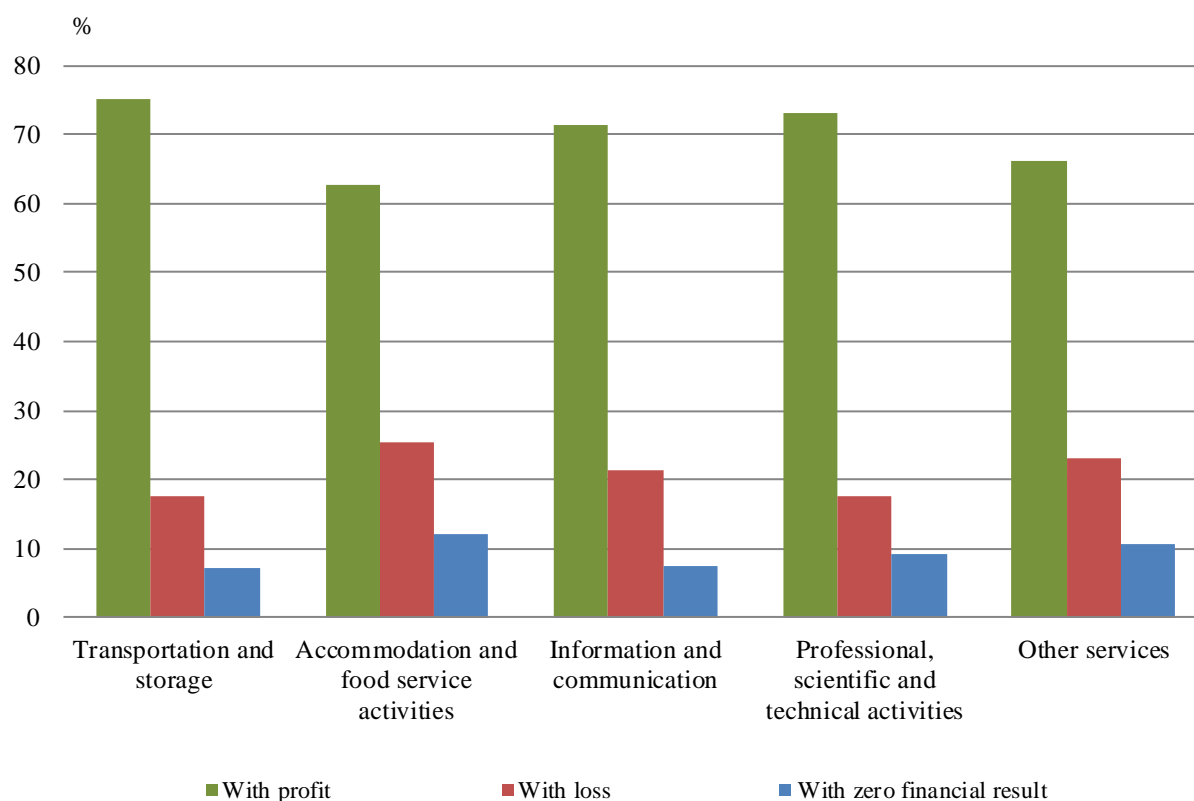
At current prices, in the service sector in 2019 was generated production value of 61 488 million BGN that formed 31.6% of the total production value of non-financial enterprises. This sector employed 865 679 persons in 2019 or 39.1% of the total number of persons employed in non-financial enterprises.

Figure 14. Production value per employee by type of services and by years



The service sector finished 2019 with a positive financial result of 7 286 million BGN and 33.6% of that result were realized by ‘Professional, scientific and technical activities’.

Figure 15. Percentage share of service enterprises according to the financial result for 2019



Methodological notes

Coverage - all sections by NACE Rev. 2 with the exception of 'Financial and insurance activities', 'Public administration and defence, compulsory social security', 'Activities of membership organisations' and 'Activities of households'.

Number of enterprises - all non-financial enterprises, which were active during whole or part of the reference year and have submitted their annual reports in the National statistical Institute and/or National Revenue Agency.

Turnover - the value of all revenue from sales of own products, goods bought and sold in the same condition, services provided and raw materials sold, including accrued excise duties, which are invoiced during the reference period. It does not include the revenue from sales of fixed assets, the income from financing, the financial and the extraordinary revenue. The value of turnover does not include accrued taxes on the type of value added tax (VAT) which are charged to the end user.

Production value - the value of turnover, reduced by the balance sheet of assets sold without own fixed assets. The changes in stocks of products and work in progress, as well as the costs incurred to acquire the assets by economic means are also included.

Value added at factor cost - the production value, reduced by the amount of the excise duties and operating expenses, excluding those for the personnel and for depreciation, and increased by the income from financing.

Financial result - the difference between the profit and the loss for a given aggregation level.

Number of persons employed - all persons employed working in a given enterprise on full or part-time, including seasonal workers, home workers, working owners, employees under contract for management and control, employees in civil contracts that do not work with another employer and unpaid family workers. It does not include those absent for an unlimited time, as well as those provided under contract by other companies.

Annex

Table 1

Economic indicators of non-financial enterprises for the period 2015 - 2019

Economic activities by NACE Rev. 2	Enterprises - number					Production value - million BGN ¹				
	2015	2016	2017	2018	2019*	2015	2016	2017	2018	2019*
Non-financial enterprises	393460	404937	406310	413535	418616	153275	151284	168150	180987	194504
Agriculture, forestry and fishing	19055	19908	19880	19923	19184	6398	6320	6827	7358	7349
Mining and quarrying	422	407	374	368	340	2579	2497	2852	2759	2585
Manufacturing	31573	31962	31733	31874	31554	54235	55236	62623	65631	68822
Electricity, gas, steam and air conditioning supply	1945	1871	1786	1790	1816	7899	7648	7739	7003	7257
Water supply; sewerage, waste management and remediation activities	838	872	826	823	841	1420	1482	1553	1697	1832
Construction	20377	20533	20370	20936	21515	17853	11559	13452	15748	17232
Wholesale and retail trade; repair of motor vehicles and motorcycles	140566	142830	142174	142938	143024	19958	21154	23046	24669	27939
Transportation and storage	21543	23006	23355	23449	23275	12775	13443	14784	16245	16998
Accommodation and food service activities	27270	27456	27299	27330	27405	3042	3549	3879	4225	4559
Information and communication	12042	13063	13700	14513	15348	7694	8394	9293	10610	12364
Real estate activities	23216	23635	23280	24031	25033	2591	2890	3571	4074	3992
Professional, scientific and technical activities	42698	44749	45309	46935	48075	6551	6208	6407	7202	8134
Administrative and support service activities	10636	11323	11579	11885	12152	3349	3634	4056	4578	5055
Education	3351	3499	3761	3949	4233	256	264	293	357	388
Human health and social work activities	13625	13847	13925	14140	14266	3242	3484	3840	4223	4622
Arts, entertainment and recreation	5033	5555	5842	6209	6568	2937	3034	3318	3838	4474
Repair of computers and communication equipment; other personal service activities	19270	20421	21117	22442	23987	496	488	617	770	902

Table 1

Economic indicators of non-financial enterprises for the period 2015 - 2019

(Continued and end)

Economic activities by NACE Rev. 2	Value added - million BGN ¹					Persons employed - number				
	2015	2016	2017	2018	2019*	2015	2016	2017	2018	2019*
Non-financial enterprises	50094	54033	59980	64135	71173	2101095	2156511	2193508	2208432	2211342
Agriculture, forestry and fishing	2425	2636	2947	3070	2949	85988	87768	86888	86615	86087
Mining and quarrying	1153	1100	1419	1331	1216	24862	23963	21843	21522	18974
Manufacturing	12151	13953	15189	15231	16246	535278	539111	546441	544545	529552
Electricity, gas, steam and air conditioning supply	3135	3409	3537	3634	4076	31590	31926	31549	31570	31248
Water supply; sewerage, waste management and remediation activities	739	753	798	843	920	32864	33031	32332	32398	32353
Construction	3308	2680	3112	3639	4202	142495	137468	140936	144621	149544
Wholesale and retail trade; repair of motor vehicles and motorcycles	9831	10349	11397	12077	13944	477886	490658	496406	495238	497905
Transportation and storage	3979	4267	4573	4944	5304	156399	163141	165912	166943	166338
Accommodation and food service activities	1321	1548	1798	1891	2089	127781	133011	137778	139151	140621
Information and communication	3900	4563	5208	6014	7326	84713	93216	99214	105344	112274
Real estate activities	1078	1174	1540	1970	1765	33190	35371	36758	37777	38354
Professional, scientific and technical activities	2694	2776	3088	3421	4239	96108	103044	106432	109857	112572
Administrative and support service activities	1427	1669	1931	2180	2516	102274	107709	109379	110037	109310
Education	133	142	160	197	221	9640	10471	11344	11674	12352
Human health and social work activities	1836	1960	2157	2413	2738	105123	106667	107165	107253	107981
Arts, entertainment and recreation	790	832	864	966	1098	22778	24664	26462	26555	27051
Repair of computers and communication equipment; other personal service activities	194	222	262	314	324	32126	35292	36669	37332	38826

¹ Data at current prices.

* Preliminary data.

Table 2

Financial results of non-financial enterprises for the period 2015 - 2019

Economic activities by NACE Rev. 2	Financial result - million BGN ¹				
	2015	2016	2017	2018	2019*
Non-financial enterprises	11253	13457	16726	17061	19259
Agriculture, forestry and fishing	746	836	1116	1089	975
Mining and quarrying	271	239	293	367	120
Manufacturing	2838	3771	4697	3454	3790
Electricity, gas, steam and air conditioning supply	298	412	453	321	906
Water supply; sewerage, waste management and remediation activities	156	119	153	150	157
Construction	956	446	829	945	1299
Wholesale and retail trade; repair of motor vehicles and motorcycles	3259	3584	4118	4353	4726
Transportation and storage	826	929	819	945	1036
Accommodation and food service activities	123	217	318	262	204
Information and communication	450	702	760	1069	1600
Real estate activities	-481	-91	531	1074	619
Professional, scientific and technical activities	1263	1346	1712	1800	2446
Administrative and support service activities	-80	280	159	335	400
Education	28	21	22	24	27
Human health and social work activities	217	198	256	328	428
Arts, entertainment and recreation	333	376	386	424	412
Repair of computers and communication equipment; other personal service activities	50	72	104	121	114

¹ Data at current prices.

* Preliminary data.

Table 3

Total production, selected manufactured products for the period 2017 - 2019

Products	Unit	2017	2018	2019*	2019/2018 (%)
Copper ores and concentrates	thous. t	30550	31258	31623	101.2
Lead, zinc and tin ores and concentrates	thous. t	793	868	898	103.5
Sausages and similar products of meat, offal or blood and food preparations based thereon (excluding liver sausages and prepared meals and dishes)	thous. t	99	100	100	100.0
Refined sunflower-seed and safflower oil and their fractions (excluding chemically modified)	thous. t	135	171	166	97.1
Jams, marmalades, fruit jellies, purees and pastes	t	13138	11646	12497	107.3
Uncooked pasta (excluding containing eggs, stuffed or otherwise prepared)	t	8785	9346	8987	96.2
Rice	t	45373	26653	25564	95.9
Spirits obtained from distilled grape wine or grape marc	thous. l alc 100%	11058	8074	7351	91.0
Beer made from malt (excluding non-alcoholic beer, beer containing ≤ 0.5% by volume of alcohol)	mln. l	499	528	491	93.0
Waters, with added sugar, other sweetening matter or flavored, i.e. soft drinks (including mineral and aerated)	mln. l	453	469	511	109.0
Cigarettes containing tobacco or mixtures of tobacco and tobacco substitutes	mln. units	19733	14242	..	
Fabrics of cotton	thous. sq. m	7428	7352	6366	86.6
Particle board, of wood	thous. cub. m	599	609	610	100.2
Toothpaste	thous. units	80263	79930	80392	100.6
Shampoos	t	5382	5671	5115	90.2
Non-refractory clay building bricks	thous. cub. m	619	605	572	94.5
Portland cement	thous. t	2107	2300	2437	106.0
Quicklime, slaked lime and hydraulic lime	thous. t	1506	1545	1457	94.3
Ready-mixed concrete	thous. t	9036	10876	12256	112.7
Electrical instantaneous or storage water heaters and immersion heaters	thous. units	1052	1088	1168	107.4
Self-propelled fork-lift trucks powered by an electric motor, with a lifting height ≥ 1 m	units	121	199	62	31.2
Self-propelled trucks fitted with lifting or handling equipment, non-powered by an electric motor	units	132	167	80	47.9
Domestic electric cookers with at least an oven and a hob	units	31314	26757	..	
Accounting machines and similar machines incorporating a calculating device; ticket-issuing machines; automatic cash register; word - processing machines (without typewriters)	thous. units	264	753	916	121.6
Lead-acid accumulators for starting piston engines	thous. units	2677	
Bicycles	thous. units	758	713	672	94.2

* 2019 data is preliminary and sample-based (based on an annual sample).

‘..’ - Confidential data.