

Hans Diefenbacher

Roland Zieschank

In cooperation with Dorothee Rodenhäuser

Measuring Welfare in Germany.

A suggestion for a new welfare index.

Final report on the Research Project FKZ 3707 11 101/01

– A time series calculation for welfare indicators –

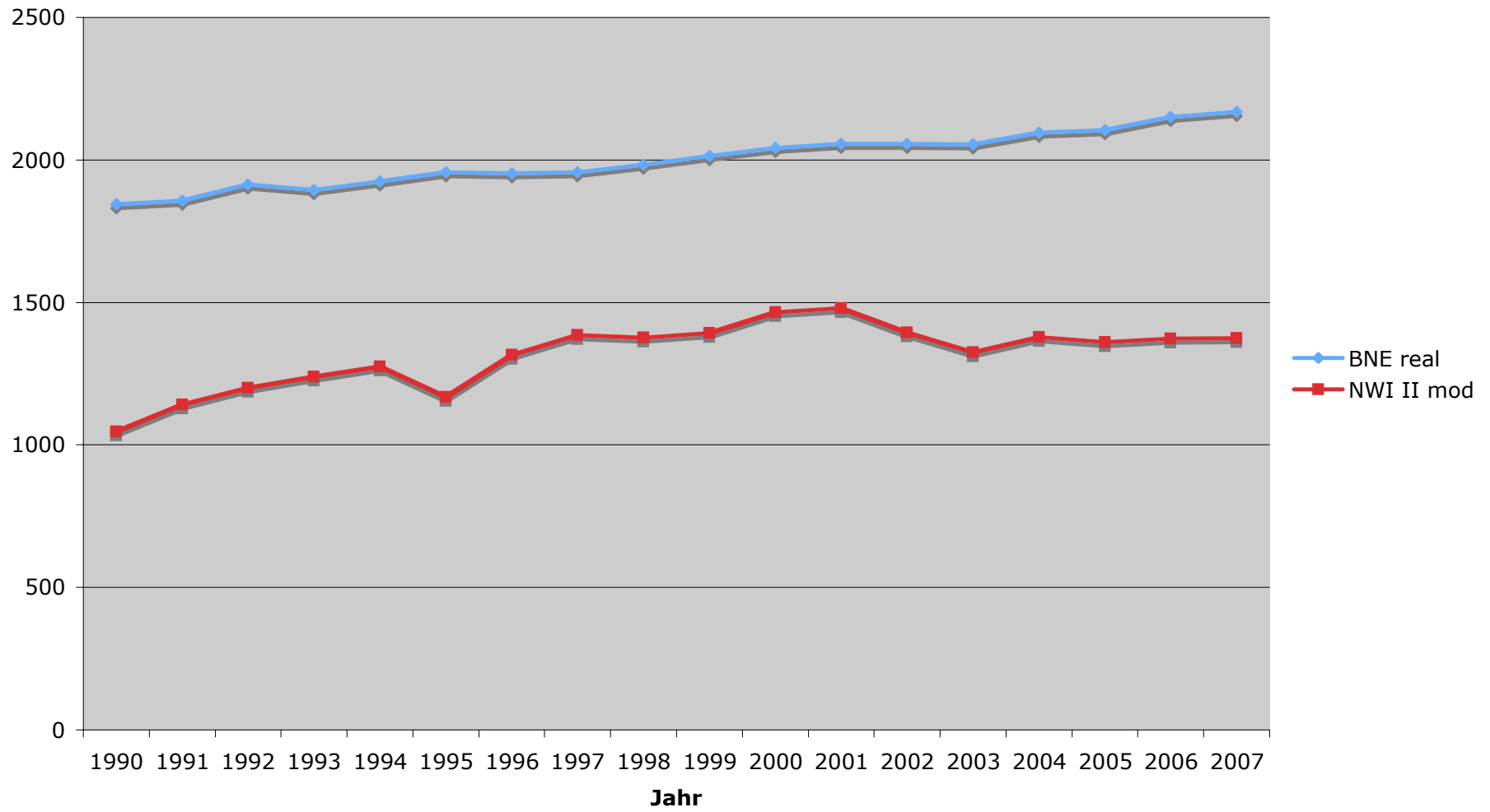
sponsored with funds of the German Federal Environmental Agency¹

Heidelberg/Berlin, October 2009

Research Centre of the
Evangelischen Studiengemeinschaft (FEST)
– Institute for interdisciplinary research –
Schmeilweg 5 • 69118 Heidelberg
hans.diefenbacher@fest-heidelberg.de

Research Centre for Environmental Policy
Faculty of Political - and Social Sciences
Freie Universität Berlin
Ihnestr. 22 • 14195 Berlin
zieschan@zedat.fu-berlin.de

BNE und modifizierter NWI



modifizierter NWI /BNE im Vergleich: 2000 = 100

