

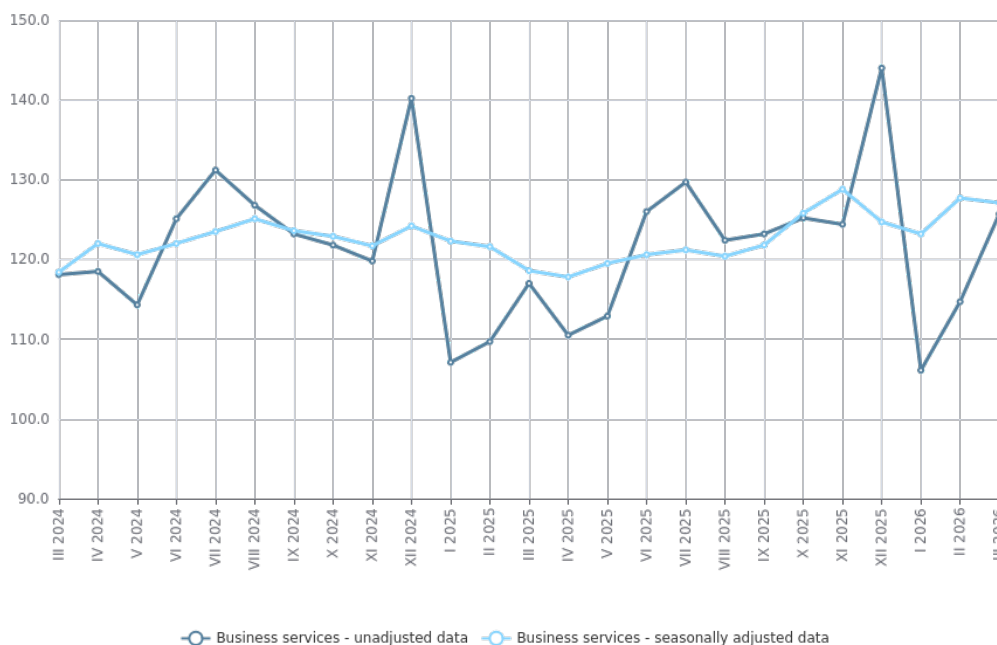


## SERVICES PRODUCTION INDICES - MARCH 2026

In March 2026, the total production index in **Services of the business economy**<sup>[1]</sup> decreased by 0.5% compared to the previous month. The data are preliminary and seasonally adjusted.

Compared to March 2025, a rise of 7.3% was registered in the calendar-adjusted index according to preliminary data.

**Figure 1. Production indices for Business services (2021 = 100)**

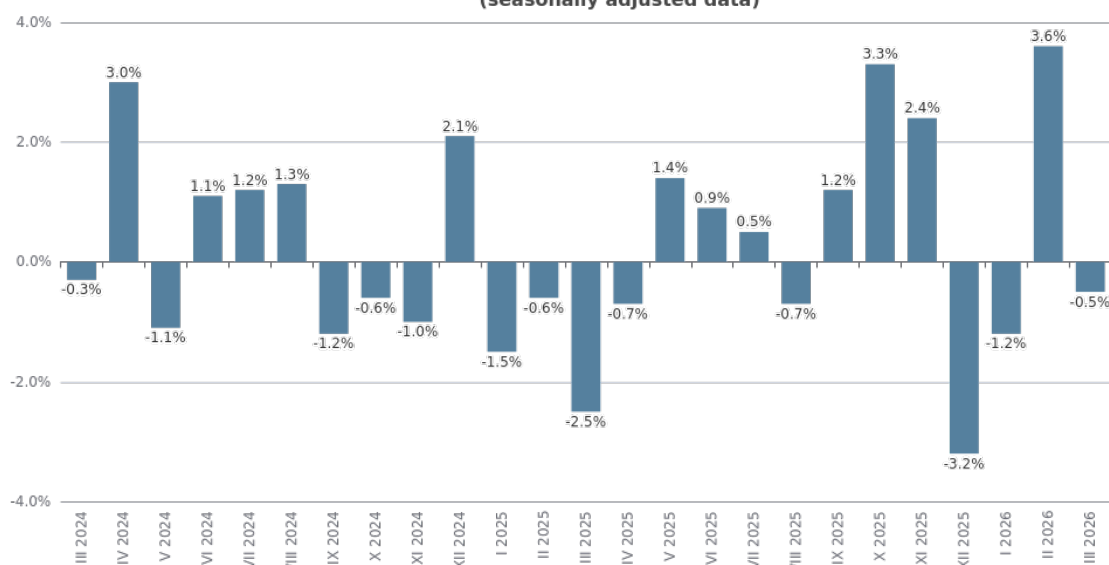


<sup>[1]</sup> Business services include the following sectors from NACE.BG - 2008: H - Transportation and storage, I - Accommodation and food service activities, J - Information and communication, L - Real estate activities, M\_STS - Professional, scientific and technical activities (specific grouping under Regulation (EU) 2019/2152), and N - Administrative and support service activities.

### Monthly changes

A decrease, compared to the previous month, was reported in the sectors 'Professional, scientific and technical activities' (by 4.0%) and 'Information and communication' (by 2.3%). An increase was seen in the following sectors: 'Real estate activities' - by 5.5%, 'Administrative and support service activities' - by 2.1%, 'Transportation and storage' - by 1.0%, and 'Accommodation and food service activities' - by 0.3%.

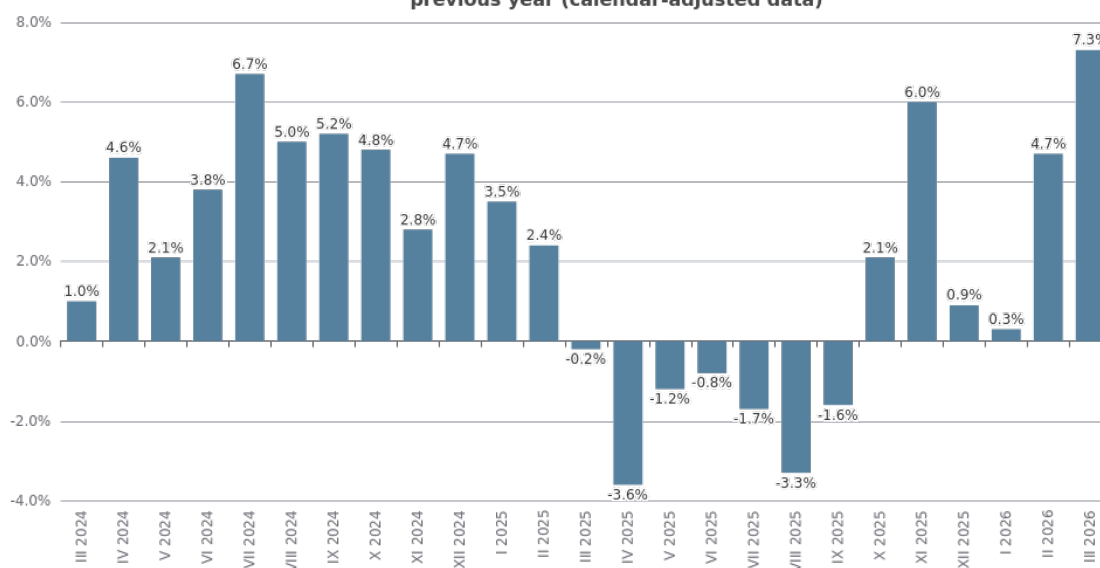
**Figure 2. Changes of production indices for Business services compared to the previous month (seasonally adjusted data)**



## Annual changes

On an annual basis, a growth was observed in the following sectors: 'Real estate activities' - by 13.3%, 'Information and communication' - by 10.5%, 'Professional, scientific and technical activities' - by 7.1%, 'Transportation and storage' - by 6.9%, and 'Administrative and support service activities' - by 4.7%. A decrease was registered in the sector 'Accommodation and food service activities' - by 0.6%.

**Figure 3. Changes of production indices for Business services compared to the same month of the previous year (calendar-adjusted data)**



## Methodological notes

Monthly indices of production in services are calculated and published two months after the reference period (M+2) in accordance with the requirements of Regulation (EU) 2019/2152 of the European Parliament and of the Council for European Business Statistics.

Production indices in services are calculated by deflating the turnover indices for each activity with the corresponding producer price indices. The purpose of the production index is to measure changes in output volume at monthly intervals. The indices are calculated with 2021 as a base year.

Seasonal adjustment is a statistical method, which eliminates the seasonal component of time series.

Calendar adjustment is an adjustment for variations caused by calendar effects, a different number of calendar and working days in the months, national holidays and outliers (for example, the presence of more non-working days in May could contribute to the decline in some activities).

Changes of production indices in services (compared to the previous month) - seasonally adjusted data							
							(Per cent)
<b>Economic activities</b>	<b>NACE.BG - 2008</b>	<b>X.2025</b>	<b>XI.2025</b>	<b>XII.2025</b>	<b>I.2026</b>	<b>II.2026</b>	<b>III.2026*</b>
<b>Services of the business economy (except trade and financial and insurance activities)</b>	<b>HTNXK</b>	<b>3.3</b>	<b>2.4</b>	<b>-3.2</b>	<b>-1.2</b>	<b>3.6</b>	<b>-0.5</b>
<b>Transportation and storage</b>	<b>H</b>	<b>1.2</b>	<b>1.4</b>	<b>-1.2</b>	<b>-0.2</b>	<b>3.9</b>	<b>1.0</b>
Land transport and transport via pipelines	H49	-0.6	1.3	1.1	-2.2	1.7	-0.2
Water transport	H50	-15.5	4.2	20.1	-2.5	18.8	0.3
Air transport	H51	8.8	14.2	-15.2	16.6	15.4	-6.0
Warehousing and support activities for transportation	H52	3.4	-0.1	-3.2	-0.8	4.1	5.1
Postal and courier activities	H53	1.3	-7.0	4.6	-1.4	0.9	4.7
<b>Accommodation and food service activities</b>	<b>I</b>	<b>1.7</b>	<b>-0.8</b>	<b>2.7</b>	<b>0.0</b>	<b>-4.3</b>	<b>0.3</b>
Accommodation	I55	4.2	-3.1	6.6	1.2	-2.7	1.5
Food and beverage service activities	I56	-0.1	1.6	-0.6	-0.9	-6.5	-1.0
<b>Information and communication</b>	<b>J</b>	<b>2.8</b>	<b>4.9</b>	<b>-1.9</b>	<b>-6.3</b>	<b>8.5</b>	<b>-2.3</b>
Publishing activities	J58	1.3	-5.4	14.4	-5.9	-3.2	-0.6
Motion picture, video, television programme production; programming and broadcasting activities	J59	20.7	-15.4	-10.7	33.3	24.4	7.8
Programming and broadcasting activities	J60	-8.1	-9.8	15.2	13.5	-12.6	-9.4
Telecommunications	J61	2.8	14.6	-3.6	-5.3	8.1	1.1
Computer programming, consultancy and related activities	J62	2.1	4.4	-2.9	-9.0	9.7	-5.5
Information service activities	J63	6.2	-14.7	6.8	-5.0	7.0	0.9
<b>Real estate activities</b>	<b>L</b>	<b>-0.5</b>	<b>-10.8</b>	<b>-1.4</b>	<b>14.8</b>	<b>4.7</b>	<b>5.5</b>
<b>Professional, scientific and technical activities (specific grouping under Regulation (EU) 2019/2152)</b>	<b>M_STS</b>	<b>13.4</b>	<b>3.8</b>	<b>-12.3</b>	<b>-0.4</b>	<b>1.3</b>	<b>-4.0</b>
Legal and accounting activities	M69	3.1	-3.0	-6.1	16.4	3.0	-0.8
Management consultancy activities	M702	-1.6	-8.5	2.9	20.6	-6.5	3.3
Architectural and engineering activities; technical testing and analysis	M71	53.9	12.6	-27.4	-20.9	8.1	-20.6
Advertising and market research	M73	-4.2	-7.2	4.5	10.6	2.3	1.0
Other professional, scientific and technical activities	M74	-3.7	10.6	-6.3	-5.6	-4.6	6.9
<b>Administrative and support service activities</b>	<b>N</b>	<b>-2.9</b>	<b>8.1</b>	<b>-2.5</b>	<b>-1.3</b>	<b>3.6</b>	<b>2.1</b>
Rental and leasing activities	N77	-7.1	9.3	-4.7	-5.4	11.6	2.2
Employment activities	N78	-8.6	8.5	-9.6	18.8	-0.9	1.7
Travel agency, tour operator reservation service and related activities	N79	9.3	-1.8	-1.0	7.1	1.6	-2.7
Security and investigation activities	N80	-4.2	17.5	-1.9	-6.7	5.9	-5.0
Services to buildings and landscape activities	N81	12.9	-3.7	5.5	-9.1	-3.1	20.9
Office administrative, office support and other business support activities	N82	-4.8	5.3	-0.2	-5.6	2.4	7.5
* Preliminary data.							

Table 2

Changes of production indices in services (compared to the same month of the previous year) - calendar-adjusted data							
							(Per cent)
<b>Economic activities</b>	<b>NACE.BG - 2008</b>	<b>X.2025</b>	<b>XI.2025</b>	<b>XII.2025</b>	<b>I.2026</b>	<b>II.2026</b>	<b>III.2026*</b>
<b>Services of the business economy (except trade and financial and insurance activities)</b>	<b>HTNXK</b>	<b>2.1</b>	<b>6.0</b>	<b>0.9</b>	<b>0.3</b>	<b>4.7</b>	<b>7.3</b>
<b>Transportation and storage</b>	<b>H</b>	<b>2.4</b>	<b>4.6</b>	<b>0.6</b>	<b>-1.6</b>	<b>-3.9</b>	<b>6.9</b>
Land transport and transport via pipelines	H49	0.7	1.6	1.0	-1.1	0.8	2.8
Water transport	H50	-27.8	-26.6	-8.1	-4.4	26.6	23.2
Air transport	H51	7.9	65.1	0.1	41.0	68.2	27.4
Warehousing and support activities for transportation	H52	8.0	10.1	0.2	-6.6	-20.9	10.3
Postal and courier activities	H53	-4.3	-12.2	1.1	-8.3	-6.2	8.0
<b>Accommodation and food service activities</b>	<b>I</b>	<b>1.9</b>	<b>-1.1</b>	<b>6.1</b>	<b>5.6</b>	<b>-2.3</b>	<b>-0.6</b>
Accommodation	I55	20.5	7.4	26.1	32.3	14.0	21.6
Food and beverage service activities	I56	-8.3	-5.5	-5.0	-10.0	-14.3	-13.7
<b>Information and communication</b>	<b>J</b>	<b>-0.7</b>	<b>8.8</b>	<b>2.4</b>	<b>-4.0</b>	<b>12.2</b>	<b>10.5</b>
Publishing activities	J58	-1.6	-12.3	8.8	-5.1	3.9	2.1
Motion picture, video, television programme production; programming and broadcasting activities	J59	-32.6	-34.2	-24.1	-20.7	25.7	32.6
Programming and broadcasting activities	J60	-19.7	-11.4	-0.3	8.7	3.0	11.1
Telecommunications	J61	-11.8	4.2	0.5	3.0	9.3	12.9
Computer programming, consultancy and related activities	J62	7.6	15.8	5.2	-6.5	17.2	7.8
Information service activities	J63	18.6	14.1	-0.9	-13.0	-0.9	14.2
<b>Real estate activities</b>	<b>L</b>	<b>-2.9</b>	<b>-8.1</b>	<b>-22.1</b>	<b>6.3</b>	<b>2.6</b>	<b>13.3</b>
<b>Professional, scientific and technical activities (specific grouping under Regulation (EU) 2019/2152)</b>	<b>M_STS</b>	<b>9.9</b>	<b>16.7</b>	<b>4.0</b>	<b>4.3</b>	<b>13.6</b>	<b>7.1</b>
Legal and accounting activities	M69	-1.6	2.4	-1.4	9.0	20.6	15.3
Management consultancy activities	M702	-16.2	-35.2	-18.3	-6.3	-5.6	11.3
Architectural and engineering activities; technical testing and analysis	M71	62.1	89.3	32.2	-6.8	21.8	-10.8
Advertising and market research	M73	1.4	-1.1	-6.3	12.0	22.9	20.6
Other professional, scientific and technical activities	M74	-7.5	-1.4	-8.4	17.0	5.4	7.9
<b>Administrative and support service activities</b>	<b>N</b>	<b>-0.1</b>	<b>-1.1</b>	<b>4.7</b>	<b>0.0</b>	<b>4.7</b>	<b>4.7</b>
Rental and leasing activities	N77	8.6	26.6	23.0	1.9	10.0	10.7
Employment activities	N78	3.1	10.5	-13.5	14.3	10.6	14.2
Travel agency, tour operator reservation service and related activities	N79	-9.9	-19.6	-22.8	-15.3	-7.3	-14.6
Security and investigation activities	N80	-4.7	7.3	4.4	-6.5	5.4	9.0
Services to buildings and landscape activities	N81	19.4	4.2	22.0	11.9	8.5	45.4
Office administrative, office support and other business support activities	N82	-4.6	-24.4	14.2	-0.9	-1.7	-12.7
* Preliminary data.							

Table 3

Production indices in services - seasonally adjusted (2021 = 100)													
NACE.BG - 2008	III.2025	IV.2025	V.2025	VI.2025	VII.2025	VIII.2025	IX.2025	X.2025	XI.2025	XII.2025	I.2026	II.2026	III.2026*
<b>HTNXK</b>	<b>118.6</b>	<b>117.8</b>	<b>119.5</b>	<b>120.6</b>	<b>121.2</b>	<b>120.4</b>	<b>121.8</b>	<b>125.8</b>	<b>128.8</b>	<b>124.7</b>	<b>123.2</b>	<b>127.7</b>	<b>127.1</b>
<b>H</b>	<b>111.8</b>	<b>111.9</b>	<b>112.3</b>	<b>112.1</b>	<b>109.5</b>	<b>110.5</b>	<b>111.9</b>	<b>113.2</b>	<b>114.8</b>	<b>113.4</b>	<b>113.2</b>	<b>117.6</b>	<b>118.7</b>
H49	103.9	102.8	104.6	105.7	102.4	104.3	105.1	104.4	105.8	106.9	104.6	106.4	106.2
H50	133.6	140.4	142.2	154.0	159.5	147.7	133.1	112.5	117.1	140.6	137.1	162.9	163.4
H51	321.0	304.4	317.4	314.7	269.5	306.4	302.7	329.4	376.1	318.9	371.7	428.8	403.0
H52	105.8	109.8	105.0	102.6	104.2	101.0	104.5	108.1	107.9	104.4	103.6	107.8	113.4
H53	112.5	112.4	116.9	114.2	115.9	115.0	116.9	118.5	110.2	115.2	113.6	114.6	120.0
<b>I</b>	<b>141.3</b>	<b>140.5</b>	<b>140.6</b>	<b>142.9</b>	<b>142.5</b>	<b>144.0</b>	<b>143.2</b>	<b>145.5</b>	<b>144.4</b>	<b>148.4</b>	<b>148.4</b>	<b>142.0</b>	<b>142.4</b>
I55	160.7	163.3	161.9	170.9	172.2	172.3	175.9	183.2	177.5	189.2	191.5	186.4	189.2
I56	130.2	127.1	128.4	127.0	124.9	127.1	123.5	123.4	125.4	124.7	123.6	115.6	114.4
<b>J</b>	<b>117.0</b>	<b>120.3</b>	<b>118.8</b>	<b>126.0</b>	<b>122.9</b>	<b>128.7</b>	<b>124.0</b>	<b>127.5</b>	<b>133.8</b>	<b>131.2</b>	<b>122.9</b>	<b>133.3</b>	<b>130.2</b>
J58	86.0	92.1	95.5	90.5	86.4	83.0	90.1	91.3	86.3	98.7	92.9	89.9	89.4
J59	90.7	84.9	94.2	71.4	77.8	99.7	71.3	86.1	72.8	65.0	86.7	107.8	116.2
J60	59.6	84.4	77.4	78.3	71.1	77.5	81.5	74.9	67.6	77.8	88.3	77.2	69.9
J61	116.3	114.3	111.9	116.0	113.2	113.5	110.9	114.0	130.7	126.0	119.4	129.0	130.5
J62	122.6	127.3	124.7	137.8	133.7	144.4	137.5	140.5	146.6	142.4	129.6	142.1	134.4
J63	129.9	142.7	147.8	151.9	151.5	149.2	149.5	158.8	135.5	144.7	137.4	147.1	148.5
<b>L</b>	<b>106.9</b>	<b>101.4</b>	<b>104.3</b>	<b>100.6</b>	<b>101.3</b>	<b>97.7</b>	<b>107.3</b>	<b>106.8</b>	<b>95.3</b>	<b>94.0</b>	<b>107.9</b>	<b>113.0</b>	<b>119.3</b>
<b>M_STS</b>	<b>118.0</b>	<b>116.9</b>	<b>126.9</b>	<b>121.3</b>	<b>126.9</b>	<b>119.1</b>	<b>127.5</b>	<b>144.5</b>	<b>150.1</b>	<b>131.6</b>	<b>131.1</b>	<b>132.8</b>	<b>127.6</b>
M69	132.4	126.0	133.8	134.0	122.1	129.1	134.0	138.2	134.0	125.8	146.4	150.8	149.6
M702	98.2	102.1	122.4	91.3	96.8	100.4	101.4	99.8	91.3	94.0	113.3	106.0	109.4
M71	123.3	112.3	129.8	142.3	154.8	117.1	136.2	209.7	236.1	171.4	135.6	146.6	116.5
M73	111.5	122.6	116.7	120.1	127.2	118.2	126.2	120.8	112.1	117.1	129.5	132.5	133.8
M74	117.2	121.0	127.3	108.2	123.7	127.0	132.8	127.9	141.5	132.5	125.1	119.3	127.6
<b>N</b>	<b>127.0</b>	<b>117.2</b>	<b>118.4</b>	<b>120.2</b>	<b>131.9</b>	<b>119.0</b>	<b>122.0</b>	<b>118.5</b>	<b>128.1</b>	<b>124.9</b>	<b>123.3</b>	<b>127.7</b>	<b>130.4</b>
N77	116.1	104.8	103.2	105.8	100.7	107.6	122.4	113.7	124.3	118.4	112.1	125.1	127.8
N78	137.3	141.5	141.0	144.4	137.3	144.7	144.7	132.2	143.5	129.7	154.1	152.7	155.3
N79	196.5	193.8	199.9	188.6	191.6	172.0	156.5	171.1	168.0	166.3	178.1	181.0	176.1
N80	101.6	102.0	102.4	103.8	148.3	106.3	106.9	102.4	120.3	118.0	110.1	116.6	110.7
N81	107.5	109.2	121.0	127.8	132.6	128.8	125.3	141.5	136.2	143.7	130.7	126.6	153.0
N82	147.5	109.3	109.4	112.4	109.4	107.4	115.4	109.9	115.7	115.4	109.0	111.6	120.0
* Preliminary data.													

Table 4

Production indices in services - calendar-adjusted (2021 = 100)													
NACE.BG - 2008	III.2025	IV.2025	V.2025	VI.2025	VII.2025	VIII.2025	IX.2025	X.2025	XI.2025	XII.2025	I.2026	II.2026	III.2026*
<b>HTNXK</b>	<b>118.1</b>	<b>111.3</b>	<b>115.2</b>	<b>128.0</b>	<b>131.2</b>	<b>126.2</b>	<b>124.3</b>	<b>124.6</b>	<b>126.0</b>	<b>141.9</b>	<b>106.4</b>	<b>115.6</b>	<b>126.7</b>
<b>H</b>	<b>113.5</b>	<b>109.9</b>	<b>112.4</b>	<b>118.4</b>	<b>121.2</b>	<b>111.9</b>	<b>113.7</b>	<b>118.5</b>	<b>113.7</b>	<b>110.8</b>	<b>95.5</b>	<b>106.0</b>	<b>121.4</b>
H49	110.6	101.4	105.0	110.1	109.6	97.6	103.4	110.4	110.7	107.7	89.0	101.8	113.6
H50	130.9	143.7	153.6	161.3	193.3	164.5	137.3	119.8	106.0	136.8	104.0	133.4	161.3
H51	223.9	244.8	327.7	413.5	425.5	489.5	403.7	324.4	218.6	211.8	200.3	246.9	285.3
H52	107.5	112.2	104.2	105.0	112.7	101.5	105.0	113.3	108.1	101.8	94.2	98.4	118.5
H53	114.2	109.8	112.1	113.5	113.8	108.3	111.0	122.3	120.4	128.9	111.1	110.3	123.3
<b>I</b>	<b>124.8</b>	<b>120.8</b>	<b>131.4</b>	<b>159.5</b>	<b>197.3</b>	<b>219.5</b>	<b>154.9</b>	<b>125.1</b>	<b>109.8</b>	<b>134.0</b>	<b>125.3</b>	<b>118.4</b>	<b>124.0</b>
I55	125.1	127.5	132.2	202.5	277.1	311.5	204.9	142.9	110.2	154.3	156.9	158.5	152.1
I56	124.6	116.9	130.9	134.4	150.7	165.9	125.7	114.8	109.6	122.1	106.9	95.0	107.6
<b>J</b>	<b>119.8</b>	<b>113.8</b>	<b>112.9</b>	<b>131.6</b>	<b>120.2</b>	<b>122.1</b>	<b>123.2</b>	<b>129.9</b>	<b>136.9</b>	<b>164.6</b>	<b>109.9</b>	<b>121.6</b>	<b>132.4</b>
J58	73.2	80.9	86.7	96.2	104.4	79.7	110.7	96.1	87.5	115.0	81.4	71.7	74.7
J59	88.4	73.0	81.3	68.8	72.4	86.4	59.5	104.8	82.2	117.0	65.8	87.6	117.2
J60	58.0	89.1	81.9	83.0	58.5	56.2	79.2	97.2	88.8	81.6	65.4	72.8	64.4
J61	114.6	109.1	110.6	119.9	114.7	115.7	113.8	114.0	130.2	138.3	111.9	121.6	129.4
J62	130.2	119.1	115.8	146.0	127.9	133.9	134.3	143.1	149.1	192.7	113.3	126.8	140.3
J63	133.4	141.7	141.6	151.8	145.5	133.7	143.2	156.1	151.9	176.6	125.4	142.3	152.3
<b>L</b>	<b>105.7</b>	<b>96.1</b>	<b>97.1</b>	<b>104.7</b>	<b>103.5</b>	<b>97.6</b>	<b>116.7</b>	<b>102.2</b>	<b>90.0</b>	<b>109.5</b>	<b>101.8</b>	<b>111.2</b>	<b>119.8</b>
<b>M_STS</b>	<b>122.8</b>	<b>111.6</b>	<b>121.5</b>	<b>127.3</b>	<b>128.8</b>	<b>107.5</b>	<b>123.3</b>	<b>140.7</b>	<b>156.3</b>	<b>184.1</b>	<b>108.3</b>	<b>120.5</b>	<b>131.5</b>
M69	137.8	126.3	134.2	142.5	122.7	117.8	129.7	135.2	129.1	153.2	132.0	140.9	158.8
M702	104.5	98.2	112.5	92.4	96.3	92.0	109.6	96.9	86.2	124.3	99.4	98.6	116.3
M71	128.0	97.8	119.1	150.9	166.3	108.0	123.7	191.5	260.3	284.8	96.4	127.9	114.2
M73	109.6	123.9	116.8	125.1	123.9	100.8	119.6	135.0	131.3	156.0	93.5	112.3	132.1
M74	125.2	114.4	121.7	113.0	121.2	114.0	130.2	126.2	138.3	167.5	115.3	113.7	135.1
<b>N</b>	<b>121.1</b>	<b>110.1</b>	<b>115.4</b>	<b>130.2</b>	<b>142.2</b>	<b>128.2</b>	<b>131.1</b>	<b>118.0</b>	<b>126.7</b>	<b>130.8</b>	<b>106.6</b>	<b>117.6</b>	<b>126.8</b>
N77	109.6	98.1	107.0	109.0	106.3	109.4	125.5	109.5	132.3	135.0	98.8	113.8	121.3
N78	140.6	141.8	137.7	143.2	136.1	143.2	143.1	133.5	144.0	148.6	138.2	150.3	160.6
N79	139.8	141.5	172.4	273.3	309.8	308.7	236.8	167.7	85.7	105.7	101.7	116.6	119.5
N80	99.5	100.9	100.4	103.9	150.8	108.9	108.6	104.3	118.9	127.0	101.1	116.4	108.5
N81	101.7	105.2	124.8	139.4	146.5	133.6	123.1	146.7	139.0	155.9	107.3	108.9	147.8
N82	147.5	102.8	105.5	123.4	104.8	98.0	126.9	106.3	130.7	120.5	100.7	104.4	128.8
* Preliminary data.													