

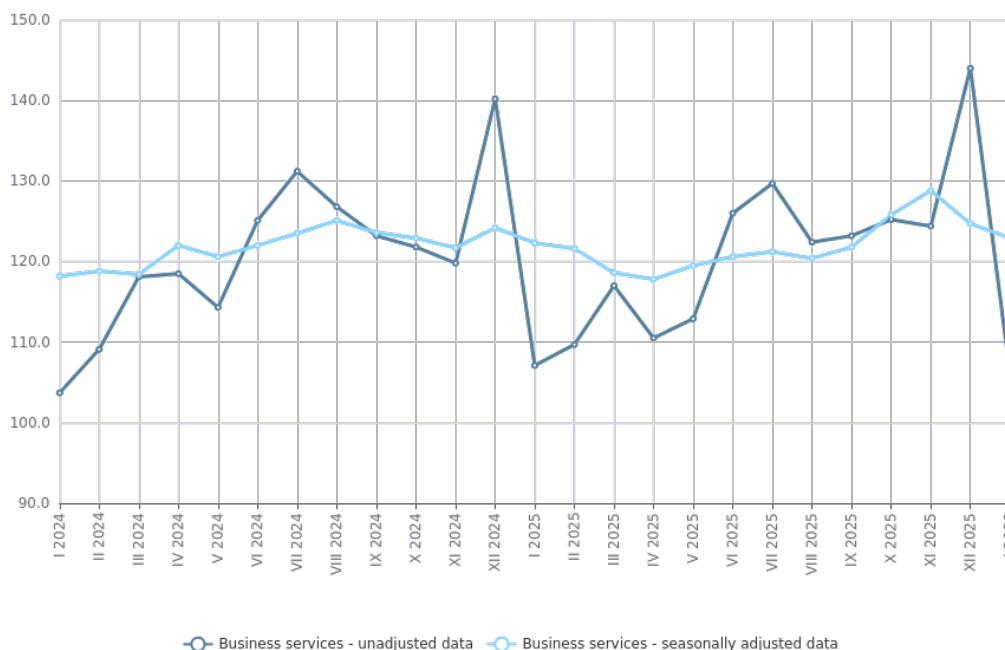


SERVICES PRODUCTION INDICES - JANUARY 2026

In January 2026, the total production index in **Services of the business economy**^[1] decreased by 1.4% compared to the previous month. The data are preliminary and seasonally adjusted.

Compared to January 2025, a rise of 0.3% was registered in the calendar-adjusted index according to preliminary data.

Figure 1. Production indices for Business services (2021 = 100)

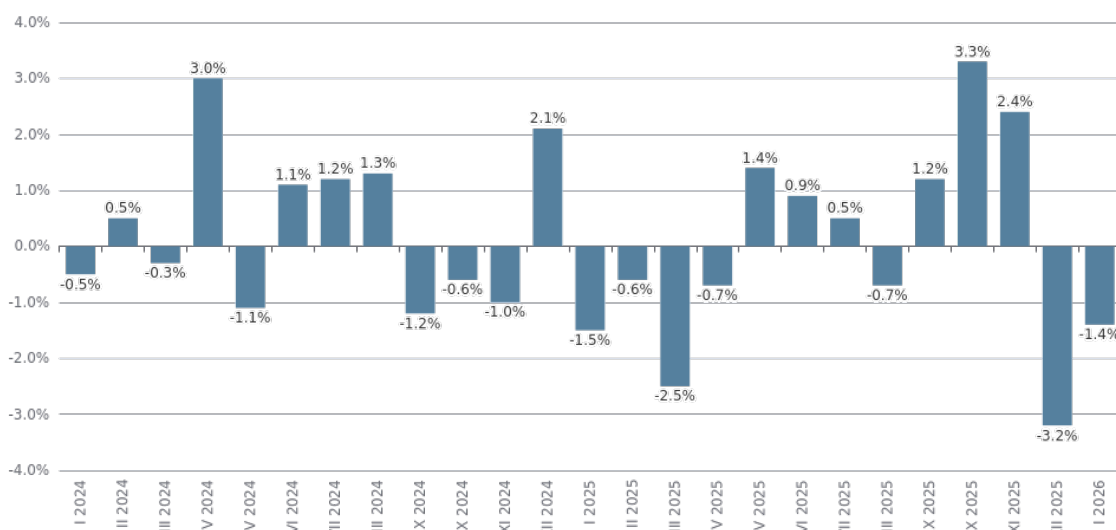


[1] Business services include the following sectors from NACE.BG - 2008: H - Transportation and storage, I - Accommodation and food service activities, J - Information and communication, L - Real estate activities, M_STS - Professional, scientific and technical activities (specific grouping under Regulation (EU) 2019/2152), and N - Administrative and support service activities.

Monthly changes

A decrease, compared to the previous month, was reported in the following sectors: 'Information and communication' - by 6.7%, 'Professional, scientific and technical activities' - by 1.2%, 'Administrative and support service activities' - by 0.9%, and 'Transportation and storage' - by 0.7%. An increase was registered in the sector 'Real estate activities' - by 15.6%, while the sector 'Accommodation and food service activities' remained unchanged.

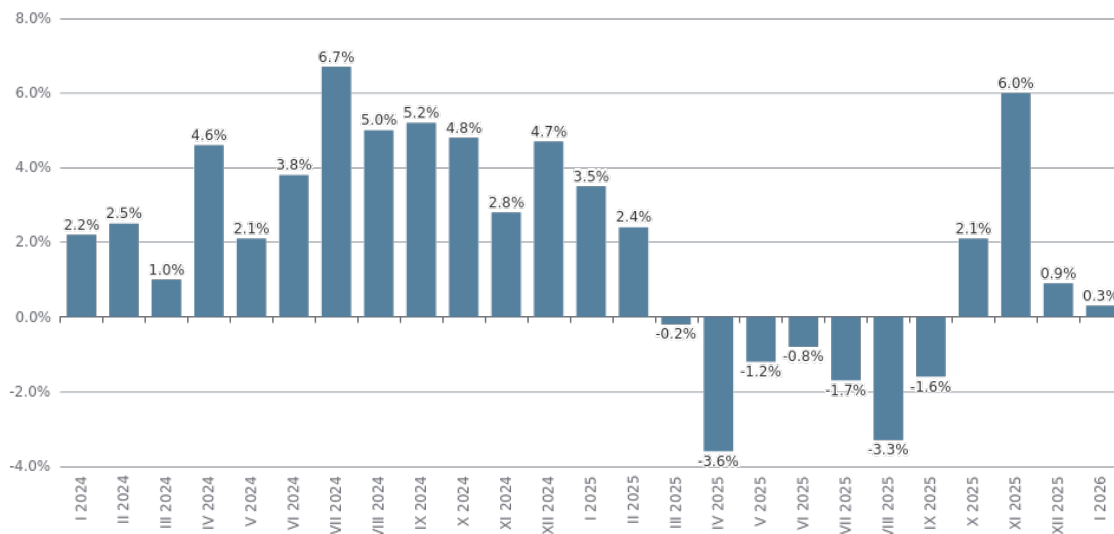
Figure 2. Changes of production indices for Business services compared to the previous month (seasonally adjusted data)



Annual changes

On an annual basis, a growth was observed in the following sectors: 'Real estate activities' - by 6.8%, 'Accommodation and food service activities' - by 5.6%, 'Professional, scientific and technical activities' - by 4.0%, and 'Administrative and support service activities' - by 0.3%. A decrease was registered in the sectors 'Information and communication' - by 3.9%, and 'Transportation and storage' - by 1.5%.

Figure 3. Changes of production indices for Business services compared to the same month of the previous year (calendar-adjusted data)



Methodological notes

Monthly indices of production in services are calculated and published two months after the reference period (M+2) in accordance with the requirements of Regulation (EU) 2019/2152 of the European Parliament and of the Council for European Business Statistics.

Production indices in services are calculated by deflating the turnover indices for each activity with the corresponding producer price indices. The purpose of the production index is to measure changes in output volume at monthly intervals. The indices are calculated with 2021 as a base year.

Seasonal adjustment is a statistical method, which eliminates the seasonal component of time series.

Calendar adjustment is an adjustment for variations caused by calendar effects, a different number of calendar and working days in the months, national holidays and outliers (for example, the presence of more non-working days in May could contribute to the decline in some activities).

Changes of production indices in services (compared to the previous month) - seasonally adjusted data							
							(Per cent)
Economic activities	NACE.BG - 2008	VIII.2025	IX.2025	X.2025	XI.2025	XII.2025	I.2026*
Services of the business economy (except trade and financial and insurance activities)	HTNXK	-0.7	1.2	3.3	2.4	-3.2	-1.4
Transportation and storage	H	1.0	1.2	1.2	1.4	-1.2	-0.7
Land transport and transport via pipelines	H49	1.8	0.8	-0.6	1.3	1.1	-2.4
Water transport	H50	-7.4	-9.9	-15.5	4.2	20.1	-2.6
Air transport	H51	13.7	-1.2	8.8	14.2	-15.2	8.1
Warehousing and support activities for transportation	H52	-3.1	3.5	3.4	-0.1	-3.2	0.7
Postal and courier activities	H53	-0.7	1.6	1.3	-7.0	4.6	-2.1
Accommodation and food service activities	I	1.0	-0.6	1.7	-0.8	2.7	0.1
Accommodation	I55	0.0	2.1	4.2	-3.1	6.6	2.7
Food and beverage service activities	I56	1.8	-2.8	-0.1	1.6	-0.6	-2.4
Information and communication	J	4.8	-3.7	2.8	4.9	-1.9	-6.7
Publishing activities	J58	-3.9	8.6	1.3	-5.4	14.4	-5.7
Motion picture, video, television programme production; programming and broadcasting activities	J59	28.1	-28.5	20.7	-15.4	-10.7	34.4
Programming and broadcasting activities	J60	9.1	5.1	-8.1	-9.8	15.2	13.6
Telecommunications	J61	0.3	-2.3	2.8	14.6	-3.6	-6.6
Computer programming, consultancy and related activities	J62	8.0	-4.8	2.1	4.4	-2.9	-8.8
Information service activities	J63	-1.6	0.2	6.2	-14.7	6.8	-5.2
Real estate activities	L	-3.6	9.8	-0.5	-10.8	-1.4	15.6
Professional, scientific and technical activities (specific grouping under Regulation (EU) 2019/2152)	M_STS	-6.2	7.1	13.4	3.8	-12.3	-1.2
Legal and accounting activities	M69	5.7	3.8	3.1	-3.0	-6.1	15.2
Management consultancy activities	M702	3.8	1.0	-1.6	-8.5	2.9	21.2
Architectural and engineering activities; technical testing and analysis	M71	-24.4	16.4	53.9	12.6	-27.4	-21.8
Advertising and market research	M73	-7.1	6.7	-4.2	-7.2	4.5	10.4
Other professional, scientific and technical activities	M74	2.7	4.6	-3.7	10.6	-6.3	-7.0
Administrative and support service activities	N	-9.8	2.6	-2.9	8.1	-2.5	-0.9
Rental and leasing activities	N77	6.9	13.8	-7.1	9.3	-4.7	-5.8
Employment activities	N78	5.4	0.0	-8.6	8.5	-9.6	20.9
Travel agency, tour operator reservation service and related activities	N79	-10.3	-9.0	9.3	-1.8	-1.0	6.5
Security and investigation activities	N80	-28.3	0.6	-4.2	17.5	-1.9	-7.0
Services to buildings and landscape activities	N81	-2.9	-2.7	12.9	-3.7	5.5	-8.6
Office administrative, office support and other business support activities	N82	-1.8	7.5	-4.8	5.3	-0.2	-4.3
* Preliminary data.							

Table 2

Changes of production indices in services (compared to the same month of the previous year) - calendar-adjusted data							
							(Per cent)
Economic activities	NACE.BG - 2008	VIII.2025	IX.2025	X.2025	XI.2025	XII.2025	I.2026*
Services of the business economy (except trade and financial and insurance activities)	HTNXK	-3.3	-1.6	2.1	6.0	0.9	0.3
Transportation and storage	H	2.8	3.6	2.4	4.6	0.6	-1.5
Land transport and transport via pipelines	H49	0.3	2.1	0.7	1.6	1.0	-1.1
Water transport	H50	2.0	-5.1	-27.8	-26.6	-8.1	-4.4
Air transport	H51	35.0	15.9	7.9	65.1	0.1	32.2
Warehousing and support activities for transportation	H52	-1.7	3.9	8.0	10.1	0.2	-4.9
Postal and courier activities	H53	-5.4	0.0	-4.3	-12.2	1.1	-9.2
Accommodation and food service activities	I	0.8	-1.1	1.9	-1.1	6.1	5.6
Accommodation	I55	1.6	3.9	20.5	7.4	26.1	32.3
Food and beverage service activities	I56	0.0	-5.5	-8.3	-5.5	-5.0	-10.0
Information and communication	J	0.6	-4.4	-0.7	8.8	2.4	-3.9
Publishing activities	J58	-51.5	-4.5	-1.6	-12.3	8.8	-5.1
Motion picture, video, television programme production; programming and broadcasting activities	J59	-5.0	-36.2	-32.6	-34.2	-24.1	-20.0
Programming and broadcasting activities	J60	1.3	6.6	-19.7	-11.4	-0.3	8.9
Telecommunications	J61	-8.5	-14.7	-11.8	4.2	0.5	3.0
Computer programming, consultancy and related activities	J62	10.1	2.1	7.6	15.8	5.2	-6.2
Information service activities	J63	17.9	9.7	18.6	14.1	-0.9	-13.3
Real estate activities	L	-12.9	-8.3	-2.9	-8.1	-22.1	6.8
Professional, scientific and technical activities (specific grouping under Regulation (EU) 2019/2152)	M_STS	-17.3	-1.9	9.9	16.7	4.0	4.0
Legal and accounting activities	M69	-11.8	-3.2	-1.6	2.4	-1.4	9.1
Management consultancy activities	M702	-43.1	-31.2	-16.2	-35.2	-18.3	-6.0
Architectural and engineering activities; technical testing and analysis	M71	-9.4	17.3	62.1	89.3	32.2	-8.0
Advertising and market research	M73	3.0	15.2	1.4	-1.1	-6.3	11.9
Other professional, scientific and technical activities	M74	-16.5	1.1	-7.5	-1.4	-8.4	16.4
Administrative and support service activities	N	-5.3	-0.7	-0.1	-1.1	4.7	0.3
Rental and leasing activities	N77	0.4	16.8	8.6	26.6	23.0	1.6
Employment activities	N78	14.4	13.2	3.1	10.5	-13.5	16.4
Travel agency, tour operator reservation service and related activities	N79	-25.1	-34.2	-9.9	-19.6	-22.8	-15.1
Security and investigation activities	N80	-7.9	-4.0	-4.7	7.3	4.4	-6.5
Services to buildings and landscape activities	N81	16.8	8.9	19.4	4.2	22.0	11.9
Office administrative, office support and other business support activities	N82	-4.4	12.8	-4.6	-24.4	14.2	-0.9
* Preliminary data.							

Table 3

Production indices in services - seasonally adjusted (2021 = 100)													
NACE.BG - 2008	I.2025	II.2025	III.2025	IV.2025	V.2025	VI.2025	VII.2025	VIII.2025	IX.2025	X.2025	XI.2025	XII.2025	I.2026*
HTNXK	122.3	121.6	118.6	117.8	119.5	120.6	121.2	120.4	121.8	125.8	128.8	124.7	122.9
H	113.2	121.1	111.8	111.9	112.3	112.1	109.5	110.5	111.9	113.2	114.8	113.4	112.6
H49	105.4	105.9	103.9	102.8	104.6	105.7	102.4	104.3	105.1	104.4	105.8	106.9	104.3
H50	143.3	130.1	133.6	140.4	142.2	154.0	159.5	147.7	133.1	112.5	117.1	140.6	136.9
H51	260.2	268.5	321.0	304.4	317.4	314.7	269.5	306.4	302.7	329.4	376.1	318.9	344.6
H52	110.6	136.8	105.8	109.8	105.0	102.6	104.2	101.0	104.5	108.1	107.9	104.4	105.1
H53	124.2	121.9	112.5	112.4	116.9	114.2	115.9	115.0	116.9	118.5	110.2	115.2	112.8
I	143.1	142.6	141.3	140.5	140.6	142.9	142.5	144.0	143.2	145.5	144.4	148.4	148.5
I55	160.1	165.9	160.7	163.3	161.9	170.9	172.2	172.3	175.9	183.2	177.5	189.2	194.4
I56	133.3	129.3	130.2	127.1	128.4	127.0	124.9	127.1	123.5	123.4	125.4	124.7	121.7
J	127.3	119.2	117.0	120.3	118.8	126.0	122.9	128.7	124.0	127.5	133.8	131.2	122.5
J58	98.1	85.2	86.0	92.1	95.5	90.5	86.4	83.0	90.1	91.3	86.3	98.7	93.1
J59	109.5	88.7	90.7	84.9	94.2	71.4	77.8	99.7	71.3	86.1	72.8	65.0	87.4
J60	82.3	76.5	59.6	84.4	77.4	78.3	71.1	77.5	81.5	74.9	67.6	77.8	88.4
J61	114.0	119.1	116.3	114.3	111.9	116.0	113.2	113.5	110.9	114.0	130.7	126.0	117.7
J62	137.8	121.6	122.6	127.3	124.7	137.8	133.7	144.4	137.5	140.5	146.6	142.4	129.8
J63	157.9	148.2	129.9	142.7	147.8	151.9	151.5	149.2	149.5	158.8	135.5	144.7	137.2
L	101.9	111.3	106.9	101.4	104.3	100.6	101.3	97.7	107.3	106.8	95.3	94.0	108.6
M_STS	125.4	117.5	118.0	116.9	126.9	121.3	126.9	119.1	127.5	144.5	150.1	131.6	130.1
M69	133.4	126.4	132.4	126.0	133.8	134.0	122.1	129.1	134.0	138.2	134.0	125.8	144.9
M702	121.1	111.6	98.2	102.1	122.4	91.3	96.8	100.4	101.4	99.8	91.3	94.0	113.9
M71	143.2	124.3	123.3	112.3	129.8	142.3	154.8	117.1	136.2	209.7	236.1	171.4	134.1
M73	115.5	108.3	111.5	122.6	116.7	120.1	127.2	118.2	126.2	120.8	112.1	117.1	129.2
M74	105.9	111.3	117.2	121.0	127.3	108.2	123.7	127.0	132.8	127.9	141.5	132.5	123.3
N	122.4	121.8	127.0	117.2	118.4	120.2	131.9	119.0	122.0	118.5	128.1	124.9	123.8
N77	109.9	114.2	116.1	104.8	103.2	105.8	100.7	107.6	122.4	113.7	124.3	118.4	111.6
N78	134.7	139.0	137.3	141.5	141.0	144.4	137.3	144.7	144.7	132.2	143.5	129.7	156.8
N79	195.5	194.6	196.5	193.8	199.9	188.6	191.6	172.0	156.5	171.1	168.0	166.3	177.1
N80	117.4	111.7	101.6	102.0	102.4	103.8	148.3	106.3	106.9	102.4	120.3	118.0	109.7
N81	117.3	113.6	107.5	109.2	121.0	127.8	132.6	128.8	125.3	141.5	136.2	143.7	131.4
N82	108.5	109.3	147.5	109.3	109.4	112.4	109.4	107.4	115.4	109.9	115.7	115.4	110.4
* Preliminary data.													

Table 4

Production indices in services - calendar-adjusted (2021 = 100)													
NACE.BG - 2008	I.2025	II.2025	III.2025	IV.2025	V.2025	VI.2025	VII.2025	VIII.2025	IX.2025	X.2025	XI.2025	XII.2025	I.2026*
HTNXK	106.1	110.3	118.1	111.3	115.2	128.0	131.2	126.2	124.3	124.6	126.0	141.9	106.5
H	97.0	110.4	113.5	109.9	112.4	118.4	121.2	111.9	113.7	118.5	113.7	110.8	95.5
H49	90.0	101.0	110.6	101.4	105.0	110.1	109.6	97.6	103.4	110.4	110.7	107.7	89.0
H50	108.8	105.4	130.9	143.7	153.6	161.3	193.3	164.5	137.3	119.8	106.0	136.8	104.0
H51	142.0	146.8	223.9	244.8	327.7	413.5	425.5	489.5	403.7	324.4	218.6	211.8	187.7
H52	100.9	124.5	107.5	112.2	104.2	105.0	112.7	101.5	105.0	113.3	108.1	101.8	96.0
H53	121.2	117.6	114.2	109.8	112.1	113.5	113.8	108.3	111.0	122.3	120.4	128.9	110.1
I	118.7	121.2	124.8	120.8	131.4	159.5	197.3	219.5	154.9	125.1	109.8	134.0	125.3
I55	118.5	139.0	125.1	127.5	132.2	202.5	277.1	311.5	204.9	142.9	110.2	154.3	156.9
I56	118.8	110.8	124.6	116.9	130.9	134.4	150.7	165.9	125.7	114.8	109.6	122.1	106.9
J	114.5	108.3	119.8	113.8	112.9	131.6	120.2	122.1	123.2	129.9	136.9	164.6	110.0
J58	85.8	68.9	73.2	80.9	86.7	96.2	104.4	79.7	110.7	96.1	87.5	115.0	81.4
J59	83.0	69.6	88.4	73.0	81.3	68.8	72.4	86.4	59.5	104.8	82.2	117.0	66.4
J60	60.1	70.6	58.0	89.1	81.9	83.0	58.5	56.2	79.2	97.2	88.8	81.6	65.5
J61	108.6	111.2	114.6	109.1	110.6	119.9	114.7	115.7	113.8	114.0	130.2	138.3	111.9
J62	121.2	108.2	130.2	119.1	115.8	146.0	127.9	133.9	134.3	143.1	149.1	192.7	113.7
J63	144.1	143.7	133.4	141.7	141.6	151.8	145.5	133.7	143.2	156.1	151.9	176.6	124.9
L	95.8	108.4	105.7	96.1	97.1	104.7	103.5	97.6	116.7	102.2	90.0	109.5	102.3
M_STS	103.8	106.1	122.8	111.6	121.5	127.3	128.8	107.5	123.3	140.7	156.3	184.1	107.9
M69	121.1	116.8	137.8	126.3	134.2	142.5	122.7	117.8	129.7	135.2	129.1	153.2	132.1
M702	106.1	104.4	104.5	98.2	112.5	92.4	96.3	92.0	109.6	96.9	86.2	124.3	99.8
M71	103.5	105.0	128.0	97.8	119.1	150.9	166.3	108.0	123.7	191.5	260.3	284.8	95.2
M73	83.5	91.4	109.6	123.9	116.8	125.1	123.9	100.8	119.6	135.0	131.3	156.0	93.4
M74	98.6	107.9	125.2	114.4	121.7	113.0	121.2	114.0	130.2	126.2	138.3	167.5	114.7
N	106.6	112.4	121.1	110.1	115.4	130.2	142.2	128.2	131.1	118.0	126.7	130.8	107.0
N77	97.0	103.5	109.6	98.1	107.0	109.0	106.3	109.4	125.5	109.5	132.3	135.0	98.5
N78	121.0	136.0	140.6	141.8	137.7	143.2	136.1	143.2	143.1	133.5	144.0	148.6	140.9
N79	120.1	125.8	139.8	141.5	172.4	273.3	309.8	308.7	236.8	167.7	85.7	105.7	102.0
N80	108.1	110.5	99.5	100.9	100.4	103.9	150.8	108.9	108.6	104.3	118.9	127.0	101.1
N81	95.9	100.4	101.7	105.2	124.8	139.4	146.5	133.6	123.1	146.7	139.0	155.9	107.3
N82	101.7	106.2	147.5	102.8	105.5	123.4	104.8	98.0	126.9	106.3	130.7	120.5	100.8
* Preliminary data.													