

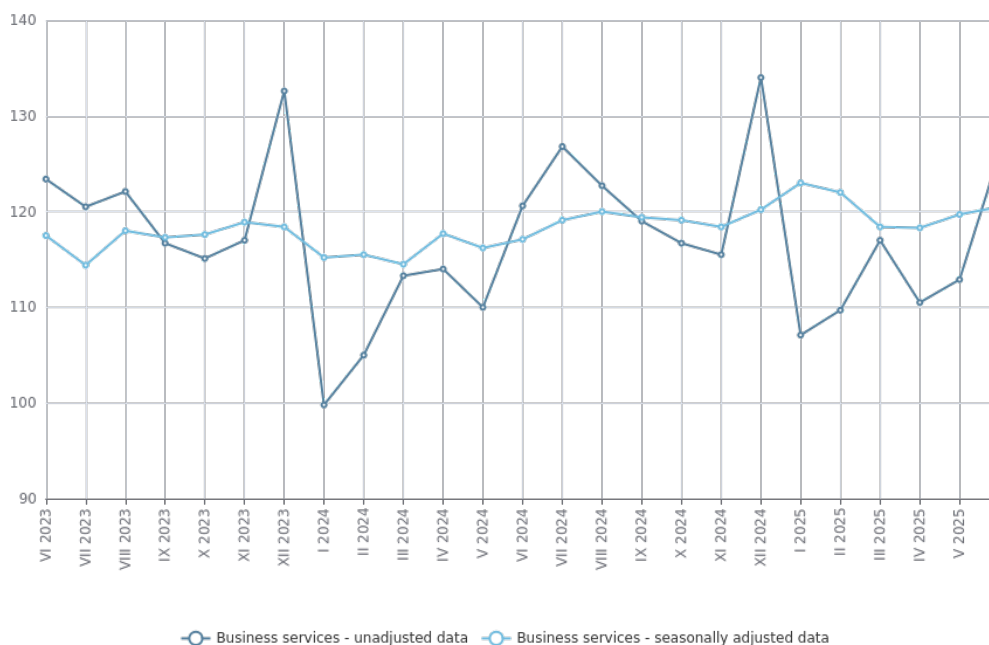


SERVICES PRODUCTION INDICES - JUNE 2025

In June 2025, the total production index in **Services of the business economy**^[1] increased by 0.7% compared to the previous month. The data are preliminary and seasonally adjusted.

Compared to June 2024, an increase of 2.9% was registered in the calendar-adjusted index according to preliminary data.

Figure 1. Production indices for Business services (2021 = 100)

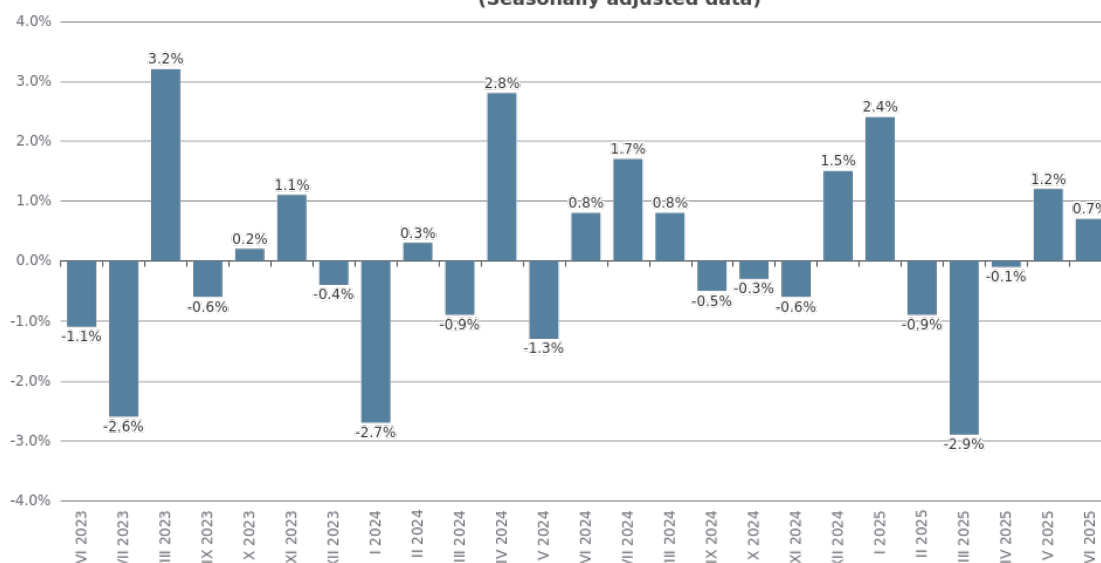


[1] Business services include the following sectors from NACE.BG - 2008: H - Transportation and storage, I - Accommodation and food service activities, J - Information and communication, L - Real estate activities, M_STG - Professional, scientific and technical activities (specific grouping under Regulation (EU) 2019/2152), and N - Administrative and support service activities.

Monthly changes

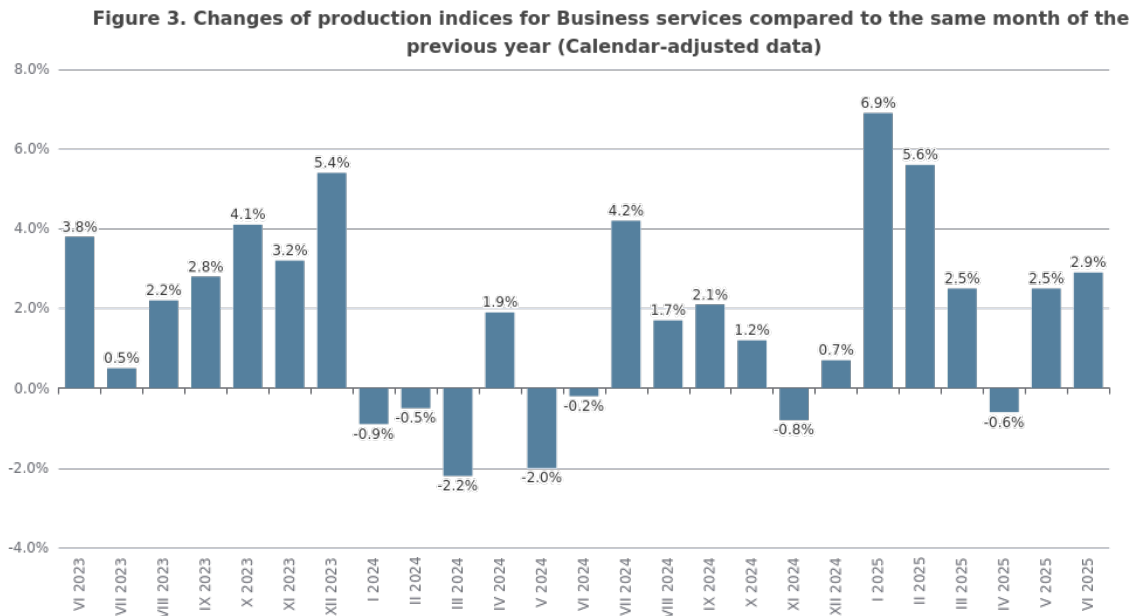
An increase, compared to the previous month, was reported in the following sectors: 'Information and communication' - by 5.6%, 'Accommodation and food service activities' - by 2.5%, and 'Administrative and support service activities' - by 1.4%. A decrease was seen in the sectors: 'Professional, scientific and technical activities' - by 4.9%, 'Real estate activities' - by 3.0%, and 'Transportation and storage' - by 1.0%.

Figure 2. Changes of production indices for Business services compared to the previous month (Seasonally adjusted data)



Annual changes

On an annual basis, a rise was observed in the following sectors: ‘Information and communication’ - by 9.6%, ‘Professional, scientific and technical activities’ - by 1.5%, ‘Transportation and storage’ - by 1.4%, and ‘Administrative and support service activities’ - by 1.2%. A decline was registered in the sector ‘Real estate activities’ - by 4.0%, while in the sector ‘Accommodation and food service activities’ was kept the level of previous year.



Methodological notes

Monthly indices of production in services are calculated and published two months after the reference period (M+2) in accordance with the requirements of Regulation (EU) 2019/2152 of the European Parliament and of the Council for European Business Statistics.

Production indices in services are calculated by deflating the turnover indices for each activity with the corresponding producer price indices. The purpose of the production index is to measure changes in output volume at monthly intervals. The indices are calculated with 2021 as a base year.

Seasonal adjustment is a statistical method, which eliminates the seasonal component of time series.

Calendar adjustment is an adjustment for variations caused by calendar effects, a different number of calendar and working days in the months, national holidays and outliers (for example, the presence of more non-working days in May could contribute to the decline in some activities).

Since July 2024, all dynamic rows have been recalculated based on the 2021 base year and have been published in IS Infostat.

Table 1

Changes of production indices in services (Compared to the previous month) - seasonally adjusted data							
							(Per cent)
Economic activities	NACE.BG - 2008	I.2025	II.2025	III.2025	IV.2025	V.2025	VI.2025*
Services of the business economy (except trade and financial and insurance activities)	HTNXK	2.4	-0.9	-2.9	-0.1	1.2	0.7
Transportation and storage	H	0.1	4.9	-8.1	0.8	0.4	-1.0
Land transport and transport via pipelines	H49	-0.5	-2.0	-2.9	0.5	2.2	-0.6
Water transport	H50	4.0	-9.0	3.0	5.2	1.6	8.4
Air transport	H51	-17.3	6.0	18.0	-4.9	4.3	-0.3
Warehousing and support activities for transportation	H52	6.1	20.6	-21.9	3.3	-4.9	-2.2
Postal and courier activities	H53	0.7	-2.4	-7.8	-0.3	4.0	-2.4
Accommodation and food service activities	I	1.0	-0.5	-1.7	-0.9	0.4	2.5
Accommodation	I55	1.4	0.6	-3.4	-0.1	1.3	5.4
Food and beverage service activities	I56	-1.9	0.7	-1.4	-1.9	0.5	-1.7
Information and communication	J	4.3	-5.3	-1.9	2.2	-0.8	5.6
Publishing activities	J58	16.2	-12.3	0.9	6.3	3.7	-5.0
Motion picture, video, television programme production; programming and broadcasting activities	J59	35.6	-21.7	3.2	-6.2	10.7	-24.4
Programming and broadcasting activities	J60	9.0	-9.7	-17.7	22.5	-2.6	0.9
Telecommunications	J61	-5.6	4.5	-2.3	-2.5	-2.1	3.6
Computer programming, consultancy and related activities	J62	6.7	-10.1	0.8	3.6	-1.5	9.8
Information service activities	J63	20.0	-4.8	-13.4	11.0	4.0	1.9
Real estate activities	L	0.5	7.2	-3.5	-4.5	2.3	-3.0
Professional, scientific and technical activities (specific grouping under Regulation (EU) 2019/2152)	M_STS	2.4	-5.8	-1.1	2.7	6.0	-4.9
Legal and accounting activities	M69	20.0	-7.2	2.3	-4.1	7.4	-1.0
Management consultancy activities	M702	-11.5	-7.1	-9.5	1.9	12.6	-25.4
Architectural and engineering activities; technical testing and analysis	M71	12.5	-10.4	-5.2	5.0	8.5	8.6
Advertising and market research	M73	-7.9	-6.8	3.0	10.1	-4.8	2.9
Other professional, scientific and technical activities	M74	-6.4	5.4	4.8	3.5	4.4	-14.8
Administrative and support service activities	N	5.9	-1.0	3.9	-8.2	0.8	1.4
Rental and leasing activities	N77	5.2	-1.7	-0.2	-13.0	1.4	2.0
Employment activities	N78	1.4	1.3	-2.6	5.2	-0.3	2.3
Travel agency, tour operator reservation service and related activities	N79	3.8	-0.4	-0.6	-0.1	-2.7	-6.3
Security and investigation activities	N80	17.6	-3.8	-8.6	-0.1	-0.7	0.0
Services to buildings and landscape activities	N81	1.3	-1.7	-4.9	2.3	12.2	7.7
Office administrative, office support and other business support activities	N82	-1.7	2.1	36.7	-27.4	1.4	4.0
* Preliminary data.							

Table 2

Changes of production indices in services (Compared to the same month of the previous year) - calendar-adjusted data							
							(Per cent)
Economic activities	NACE.BG - 2008	I.2025	II.2025	III.2025	IV.2025	V.2025	VI.2025*
Services of the business economy (except trade and financial and insurance activities)	HTNXK	6.9	5.6	2.5	-0.6	2.5	2.9
Transportation and storage	H	4.7	7.8	-2.1	-5.2	1.6	1.4
Land transport and transport via pipelines	H49	2.8	-2.6	-5.1	-9.2	0.0	-1.2
Water transport	H50	19.9	0.6	11.4	6.2	18.0	18.8
Air transport	H51	19.7	18.2	49.6	17.0	16.3	26.5
Warehousing and support activities for transportation	H52	6.8	31.8	-2.6	0.9	0.7	0.0
Postal and courier activities	H53	1.5	1.0	-5.9	-15.0	-1.3	-6.3
Accommodation and food service activities	I	3.2	1.1	-2.8	-5.1	-4.4	-0.1
Accommodation	I55	-0.9	7.3	-5.0	-4.1	-7.7	2.3
Food and beverage service activities	I56	6.4	-3.3	-1.2	-5.8	-1.9	-2.6
Information and communication	J	11.7	3.4	2.1	3.5	0.0	9.6
Publishing activities	J58	19.9	-5.4	-0.2	4.7	5.3	2.6
Motion picture, video, television programme production; programming and broadcasting activities	J59	20.0	-17.9	-12.2	-9.4	13.4	-44.1
Programming and broadcasting activities	J60	7.3	-21.1	-22.5	-10.6	-6.3	5.0
Telecommunications	J61	-1.0	0.5	-1.2	-2.9	-8.5	-3.9
Computer programming, consultancy and related activities	J62	16.5	4.6	3.3	6.9	2.3	19.2
Information service activities	J63	38.5	26.2	20.9	19.0	23.7	41.5
Real estate activities	L	9.9	18.1	15.9	1.3	10.8	-4.0
Professional, scientific and technical activities (specific grouping under Regulation (EU) 2019/2152)	M_STS	7.1	2.5	5.6	2.2	11.7	1.5
Legal and accounting activities	M69	19.3	7.5	21.0	6.6	4.0	13.3
Management consultancy activities	M702	-11.7	-17.1	-1.0	-9.6	10.6	-40.4
Architectural and engineering activities; technical testing and analysis	M71	30.4	24.3	-0.6	0.7	18.4	39.8
Advertising and market research	M73	-13.7	-14.3	-6.2	-4.2	1.4	-2.9
Other professional, scientific and technical activities	M74	5.1	9.1	10.7	15.9	24.9	-4.5
Administrative and support service activities	N	1.6	7.4	9.4	0.7	0.8	1.2
Rental and leasing activities	N77	-30.5	-5.8	-11.0	-24.9	-14.4	-16.6
Employment activities	N78	21.9	25.8	18.7	39.3	11.8	18.8
Travel agency, tour operator reservation service and related activities	N79	14.4	9.0	10.6	1.5	6.4	-9.7
Security and investigation activities	N80	19.4	10.7	1.6	1.8	-0.7	3.7
Services to buildings and landscape activities	N81	1.1	1.8	-7.8	-6.7	17.0	19.7
Office administrative, office support and other business support activities	N82	-3.9	2.2	35.4	1.1	-0.9	3.6
* Preliminary data.							

Table 3

Production indices in services - seasonally adjusted (2021 = 100)													
NACE.BG - 2008	VI.2024	VII.2024	VIII.2024	IX.2024	X.2024	XI.2024	XII.2024	I.2025	II.2025	III.2025	IV.2025	V.2025	VI.2025*
HTNXK	117.1	119.1	120.0	119.4	119.1	118.4	120.2	123.0	122.0	118.4	118.3	119.7	120.5
H	109.7	113.0	109.5	109.9	114.0	109.9	114.9	115.0	120.7	110.9	111.9	112.3	111.2
H49	105.2	107.0	104.0	104.0	106.6	104.4	107.4	106.8	104.7	101.6	102.2	104.4	103.8
H50	131.4	128.0	136.1	125.0	125.1	127.9	137.1	142.5	129.7	133.6	140.6	142.8	154.8
H51	255.0	250.9	229.1	256.4	309.1	240.3	313.3	259.1	274.7	324.3	308.4	321.7	320.8
H52	100.9	107.0	103.6	103.1	104.7	102.1	107.1	113.6	137.0	107.0	110.6	105.1	102.8
H53	120.2	130.2	127.3	126.2	133.1	132.8	124.2	125.1	122.2	112.6	112.3	116.8	114.0
I	143.7	144.4	143.6	144.0	143.7	144.4	144.0	145.4	144.7	142.2	141.0	141.5	145.0
I55	188.6	190.7	188.6	187.2	179.9	178.6	179.4	182.0	183.2	176.9	176.7	179.0	188.6
I56	119.7	117.9	117.8	118.8	122.3	124.2	123.2	120.9	121.8	120.1	117.8	118.4	116.4
J	115.9	119.7	120.3	122.0	120.4	116.6	121.1	126.3	119.6	117.3	119.9	118.9	125.6
J58	88.6	110.6	150.4	86.2	85.1	89.0	84.8	98.5	86.4	87.2	92.6	96.0	91.2
J59	123.6	109.6	87.4	109.5	106.7	107.0	82.2	111.5	87.3	90.0	84.4	93.5	70.7
J60	75.0	76.6	82.1	79.7	77.7	73.5	78.7	85.7	77.4	63.7	78.0	76.0	76.6
J61	120.9	122.2	120.7	125.6	125.7	123.4	122.4	115.5	120.7	118.0	115.1	112.6	116.7
J62	116.8	121.2	122.7	124.9	122.3	120.3	126.1	134.5	120.9	121.9	126.3	124.4	136.6
J63	110.6	122.6	115.6	123.3	120.6	92.7	130.9	157.1	149.6	129.6	143.8	149.5	152.3
L	105.3	94.9	97.0	103.5	96.5	88.9	102.2	102.7	110.1	106.2	101.5	103.9	100.7
M_STS	119.0	125.6	135.6	124.4	124.0	128.8	122.6	125.6	118.3	117.0	120.2	127.4	121.2
M69	117.7	124.9	136.5	129.3	128.9	119.0	114.4	137.3	127.4	130.4	125.1	134.4	133.1
M702	144.3	170.4	199.9	174.5	148.4	174.8	144.1	127.5	118.4	107.2	109.2	123.0	91.7
M71	105.2	109.7	113.9	109.4	116.0	126.4	120.3	135.4	121.3	115.0	120.7	131.0	142.3
M73	123.9	115.2	115.8	111.5	120.8	114.1	126.0	116.0	108.1	111.4	122.6	116.7	120.0
M74	112.2	115.4	120.8	104.4	109.6	114.3	113.6	106.3	112.0	117.4	121.6	127.0	108.2
N	117.9	114.9	115.2	116.0	113.3	125.3	117.0	123.9	122.7	127.5	117.1	118.0	119.7
N77	126.3	129.3	119.0	120.1	118.6	114.2	113.4	119.4	117.4	117.1	101.9	103.3	105.4
N78	121.1	111.1	112.9	116.3	115.9	119.1	134.9	136.8	138.6	134.9	141.9	141.5	144.8
N79	205.7	200.6	207.4	199.9	191.1	194.7	197.3	204.8	203.9	202.8	202.5	197.1	184.6
N80	98.8	97.6	103.4	101.9	96.3	100.4	99.9	117.5	113.0	103.3	103.2	102.5	102.5
N81	108.3	101.2	100.2	103.9	105.6	112.7	110.7	112.1	110.2	104.9	107.3	120.4	129.7
N82	110.9	107.4	105.6	109.3	108.4	153.4	107.4	105.6	107.8	147.3	106.9	108.4	112.8
* Preliminary data.													

Table 4

Production indices in services - calendar-adjusted (2021 = 100)													
NACE.BG - 2008	VI.2024	VII.2024	VIII.2024	IX.2024	X.2024	XI.2024	XII.2024	I.2025	II.2025	III.2025	IV.2025	V.2025	VI.2025*
HTNXK	124.2	129.8	126.8	122.5	117.6	114.9	134.4	106.1	110.2	117.1	111.5	114.9	127.8
H	115.6	126.2	111.1	111.4	118.7	110.2	110.4	97.6	109.9	111.4	110.0	111.9	117.2
H49	109.4	115.4	98.5	101.8	112.9	109.5	104.7	91.0	100.1	107.1	101.7	104.2	108.1
H50	135.8	153.3	151.0	129.5	134.9	116.6	133.2	108.8	105.4	130.9	143.7	153.6	161.3
H51	326.8	424.3	373.6	350.6	301.8	131.9	212.9	142.0	146.8	223.9	244.8	327.7	413.5
H52	105.1	116.6	106.8	104.3	108.0	100.9	104.9	100.9	124.5	107.7	112.1	104.2	105.0
H53	120.8	127.4	119.1	118.7	134.4	146.7	136.3	121.2	117.6	114.2	109.8	112.1	113.2
I	161.3	202.4	222.1	158.1	121.4	109.5	124.9	117.6	121.4	123.7	120.2	130.3	161.1
I55	220.4	302.2	341.3	219.5	132.0	114.2	136.3	132.0	154.8	139.2	142.0	147.2	225.5
I56	126.9	144.1	152.5	122.3	115.1	106.7	118.2	109.2	102.5	114.6	107.4	120.4	123.6
J	120.0	117.4	113.4	121.3	122.0	119.7	150.8	114.5	108.3	119.8	113.8	112.9	131.6
J58	93.7	135.1	149.8	105.7	89.0	91.0	96.4	85.8	68.9	73.2	80.9	86.7	96.2
J59	123.0	98.8	70.1	93.1	123.4	122.8	153.7	83.0	69.6	88.3	73.0	81.3	68.8
J60	79.0	64.5	60.1	75.0	95.8	100.5	82.5	60.1	70.6	58.0	89.1	81.9	83.0
J61	124.8	124.2	123.5	130.2	126.3	123.8	134.4	108.6	111.2	114.6	109.1	110.6	119.9
J62	122.5	115.6	111.1	121.2	123.6	120.2	168.8	121.2	108.2	130.2	119.1	115.8	146.0
J63	107.3	116.4	102.0	116.4	115.1	115.6	158.7	144.1	143.7	133.4	141.7	141.6	151.8
L	109.3	96.8	97.7	111.2	91.4	85.5	123.4	95.8	108.4	105.7	96.1	97.1	104.9
M_STS	125.4	126.4	126.0	122.3	122.8	129.4	168.8	103.8	106.0	121.1	113.1	121.4	127.2
M69	125.8	127.7	122.7	122.6	123.9	114.3	142.7	120.7	116.8	138.7	126.3	134.2	142.5
M702	155.1	179.0	197.9	195.9	145.4	167.4	187.1	106.1	104.4	104.5	98.2	112.5	92.4
M71	107.7	108.7	109.8	97.5	109.6	127.5	199.2	103.5	104.6	121.0	103.7	118.8	150.5
M73	128.9	111.3	98.8	105.0	134.8	134.7	168.4	83.5	91.4	109.6	123.9	116.8	125.1
M74	118.6	113.1	108.3	102.3	109.0	111.9	145.1	98.7	107.9	124.8	114.5	121.6	113.3
N	128.1	126.7	127.0	126.1	111.7	121.1	118.4	106.3	112.8	120.9	110.4	115.4	129.6
N77	130.0	141.2	121.5	121.6	113.1	115.3	123.3	97.6	103.5	109.4	98.3	106.3	108.5
N78	120.5	110.4	111.2	114.4	117.6	119.1	155.4	121.0	136.0	137.6	141.8	137.7	143.2
N79	301.7	326.0	370.5	323.1	167.3	95.8	123.0	120.1	125.8	139.8	141.5	172.4	272.5
N80	98.9	98.9	105.6	103.9	98.9	99.6	107.6	106.9	111.8	100.2	101.5	101.0	102.6
N81	116.5	109.9	103.4	102.9	106.0	112.7	116.3	95.9	100.4	101.7	105.2	124.8	139.4
N82	119.1	105.8	100.2	111.7	108.3	167.5	104.8	101.7	106.2	147.5	102.8	105.5	123.4
* Preliminary data.													