



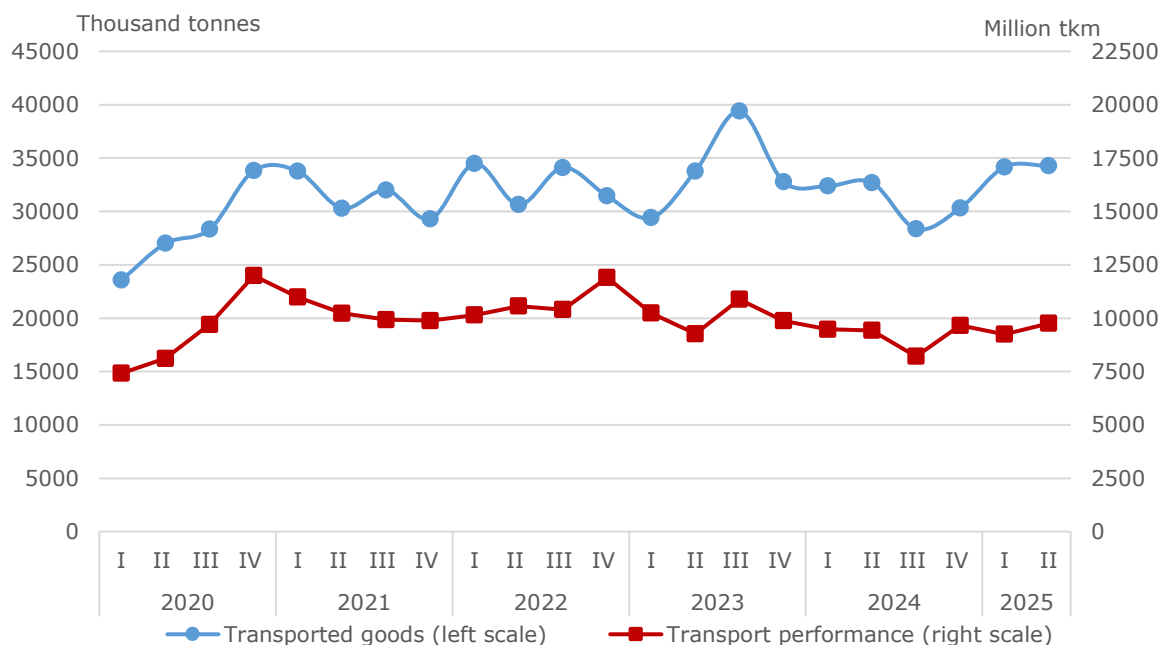
TRANSPORT (RAILWAY TRANSPORT, PASSENGER BUS TRANSPORT, MARITIME TRANSPORT, INLAND WATERWAY TRANSPORT, FREIGHT ROAD TRANSPORT AND URBAN ELECTRICAL TRANSPORT) IN THE SECOND QUARTER OF 2025 (PRELIMINARY DATA)

Transport - Total

Quarterly changes

In the second quarter of 2025, there was an increase of 0.3% in the goods carried by land and water **freight transport** and the transport performance rose by 5.5% in comparison with the previous quarter (Figure 1). The data are preliminary and seasonally adjusted.

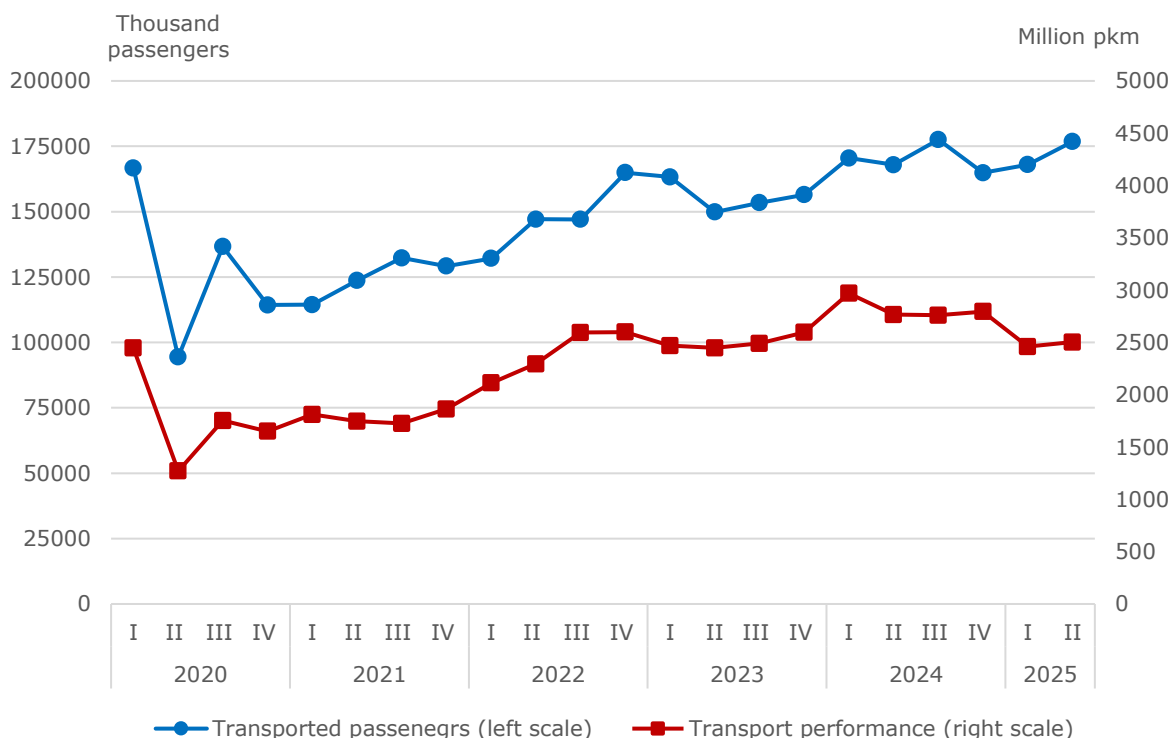
Figure 1. Goods carried and transport performance of freight transport by quarter for the period 2020 - 2025 (Seasonally adjusted data)



The passengers carried by **passenger transport** (land, water and urban electrical transport) as well as the transport performance went up - by 5.3 and 1.8% respectively (Figure 2).

TRANSPORT (RAILWAY TRANSPORT, PASSENGERS BUS TRANSPORT, MARITIME TRANSPORT, INLAND WATERWAY TRANSPORT, FREIGHT ROAD TRANSPORT AND URBAN ELECTRICAL TRANSPORT) IN THE SECOND QUARTER OF 2025 (PRELIMINARY DATA)

Figure 2. Transported passengers and transport performance of passenger transport by quarter for the period 2020 - 2025 (Seasonally adjusted data)



Annual changes

In the second quarter of 2025, the goods carried by land and water **freight transport** marked an increase of 5.0% and the transport performance rose by 3.6% in comparison with the same quarter of 2024. The data are preliminary.

The number of passengers carried by of **passenger transport** (land, water and urban electrical transport) increased by 5.3%, while the transport performance dropped by 9.5%. The data are preliminary.

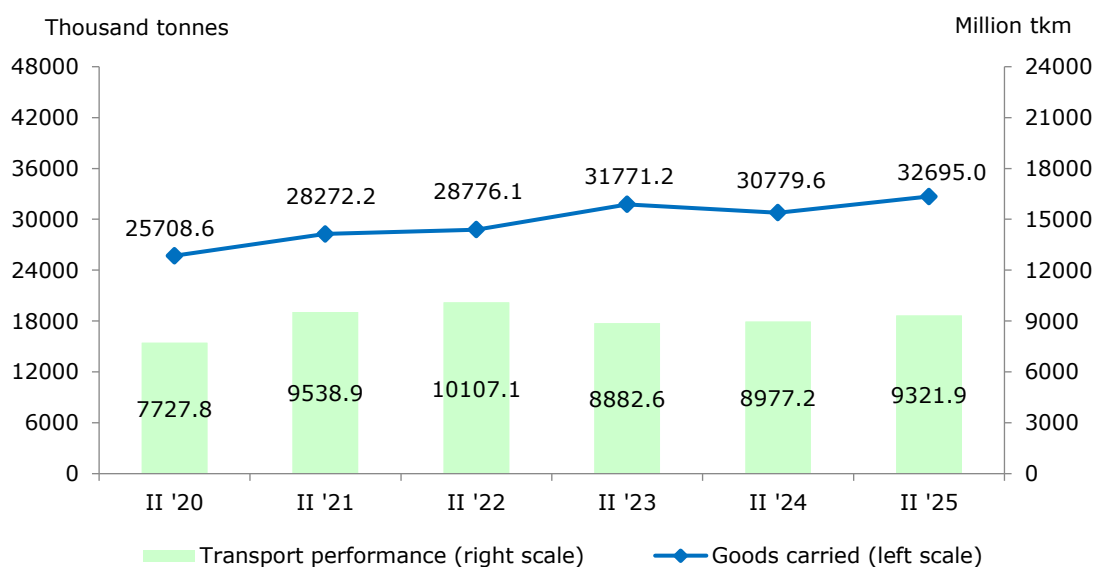
Freight land transport

The **goods carried** by land transport in the second quarter of 2025 totalled 32 695.0 thousand tonnes, which was 6.2% up on the same quarter of 2024 (Figure 3). Both national and international carriages increased by 6.6% and 5.3% respectively.

TRANSPORT (RAILWAY TRANSPORT, PASSENGERS BUS TRANSPORT, MARITIME TRANSPORT, INLAND WATERWAY TRANSPORT, FREIGHT ROAD TRANSPORT AND URBAN ELECTRICAL TRANSPORT) IN THE SECOND QUARTER OF 2025 (PRELIMINARY DATA)

The **transport performance** stood at 9 321.9 million tkm, which was 3.8% more than in the same quarter of the previous year (Figure 3).

Figure 3. Transported goods and transport performance of land transport in the second quarter of the respective year



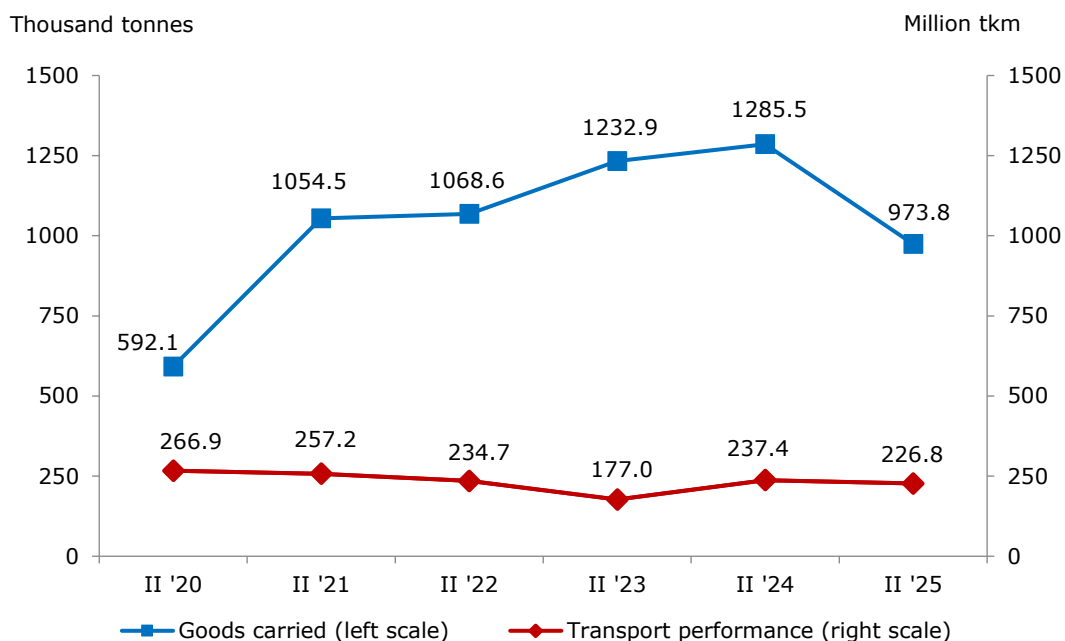
Freight water transport

The **goods carried** by sea and inland waterway transport were 311.7 thousand tonnes less than in the second quarter of 2024, due to the smaller volumes of goods carried by inland waterway transport (Figure 4).

The **transport performance**, measured in tonne-kilometres, decreased by 4.5% on the same period of the previous year.

**TRANSPORT (RAILWAY TRANSPORT, PASSENGERS BUS TRANSPORT, MARITIME TRANSPORT, INLAND WATERWAY TRANSPORT, FREIGHT ROAD TRANSPORT AND URBAN ELECTRICAL TRANSPORT) IN THE SECOND QUARTER OF 2025
(PRELIMINARY DATA)**

Figure 4. Transported goods and transport performance of water transport in the second quarter of the respective year



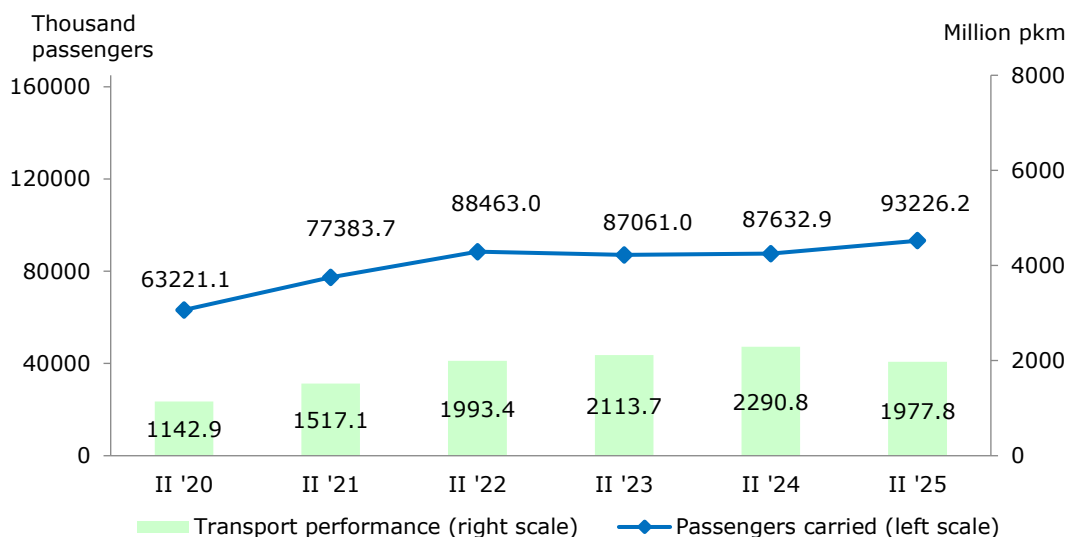
Passengers land transport

The number of **transported passengers** by land transport was 93 226.2 thousand, or 6.4% more compared to the second quarter of 2024 (Figure 5). Bus passenger numbers rose by 7.0%, while rail passengers declined by 2.0%.

The **transport performance** reached 1 977.8 million passenger-kilometres, which represented a 13.7% drop on the corresponding quarter of 2024, as a result of a reduced activity in both bus and rail passenger transport.

**TRANSPORT (RAILWAY TRANSPORT, PASSENGERS BUS TRANSPORT, MARITIME TRANSPORT, INLAND WATERWAY TRANSPORT, FREIGHT ROAD TRANSPORT AND URBAN ELECTRICAL TRANSPORT) IN THE SECOND QUARTER OF 2025
(PRELIMINARY DATA)**

Figure 5. Transported passengers and transport performance of land transport in the second quarter of the respective year



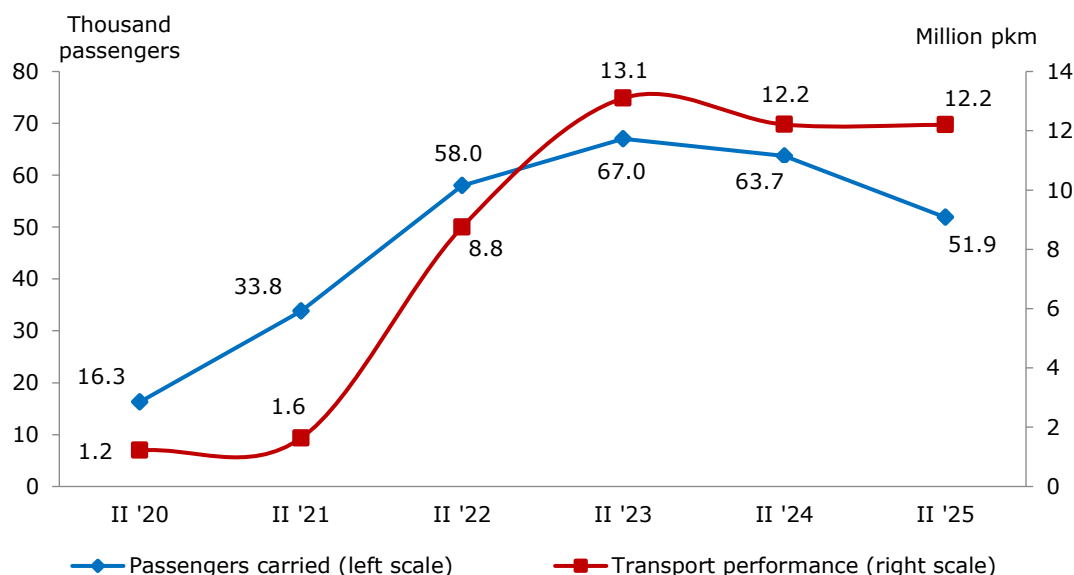
Passenger water transport

There was a fall of 11.8 thousand passengers in the number of **passengers carried** by water transport, compared to the same period of 2024, due to the smaller number of passengers carried by inland waterway transport.

Meanwhile, the **transport performance** remains at the same level as it was in the second quarter of the previous year (Figure 6).

**TRANSPORT (RAILWAY TRANSPORT, PASSENGERS BUS TRANSPORT, MARITIME TRANSPORT, INLAND WATERWAY TRANSPORT, FREIGHT ROAD TRANSPORT AND URBAN ELECTRICAL TRANSPORT) IN THE SECOND QUARTER OF 2025
(PRELIMINARY DATA)**

Figure 6. Transported passengers and transport performance of water transport in the second quarter of the respective year

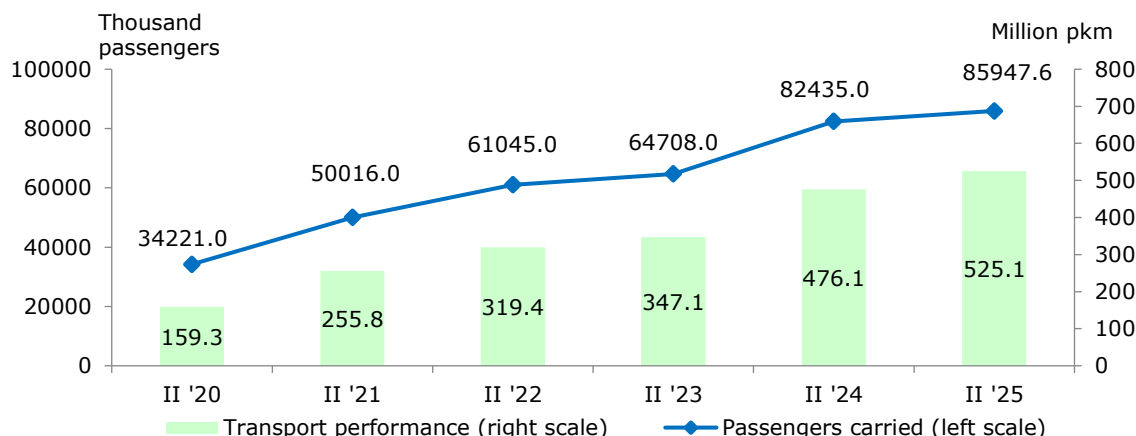


Urban electrical transport

During the period April - June 2025, the enterprises performing urban electric transport carried a total of 85 947.6 thousand **passengers**, or 4.3% more than in the same period of 2024 (Figure 7).

The **transport performance** also increased by 10.3% and reached 525.1 million passenger-kilometres.

Figure 7. Transported passengers and transport performance of urban electrical transport in the second quarter of the respective year



**TRANSPORT (RAILWAY TRANSPORT, PASSENGERS BUS TRANSPORT, MARITIME
TRANSPORT, INLAND WATERWAY TRANSPORT, FREIGHT ROAD TRANSPORT
AND URBAN ELECTRICAL TRANSPORT) IN THE SECOND QUARTER OF 2025
(PRELIMINARY DATA)**

Methodological notes

Land freight transport covers the freight carriages by road and rail transport from vehicles with Bulgarian registration as well as transmission of goods by pipelines.

Land passenger transport covers the passengers' carriages by road and rail transport from vehicles with Bulgarian registration.

Water transport covers the passengers' and freight carriages and transport performance by maritime and IWW vessels with Bulgarian registration.

Urban electrical transport includes passengers carried and transport performance of trolleybus and electric bus transport in the country, tramway transport and metro in Sofia.

Goods carried (tonnes) - measures the total volume of goods carried **for hire or reward** between two places (place of loading and place of unloading).

Transport performance of freight transport (tonne-kilometres) - corresponds to the transportation of one tonne over one kilometre.

Passengers carried (in numbers) - measures the total number of passengers **with paid fares** carried by the corresponding type of transport between two places (place of embarkation and place of disembarkation)

Transport performance of passenger transport (passenger-kilometres) - corresponds to the transportation of one passenger over one kilometre.

**TRANSPORT (RAILWAY TRANSPORT, PASSENGERS BUS TRANSPORT, MARITIME
TRANSPORT, INLAND WATERWAY TRANSPORT, FREIGHT ROAD TRANSPORT
AND URBAN ELECTRICAL TRANSPORT) IN THE SECOND QUARTER OF 2025
(PRELIMINARY DATA)**

Annex

Table 1

**Main indicators of the freight transport activity,
second quarter of 2024 and 2025**

Freight transport	II-nd quarter 2024	II-nd quarter 2025	Index of change compared to the second quarter of 2024
Land transport - transported goods			
Total - thousand tonnes	30779.6	32695.0	106.2
National	22068.7	23523.8	106.6
International	8711.0	9171.2	105.3
Land transport - transport performance			
Total - million tkm	8977.2	9321.9	103.8
National	3486.5	2883.4	82.7
International	5490.7	6438.5	117.3
Water transport - transported goods			
Total - thousand tonnes	1285.5	973.8	75.8
National	- ¹	-	-
International	1285.5	973.8	75.8
Water transport - transport performance			
Total - million tkm	237.4	226.8	95.5
National	-	-	-
International	237.4	226.8	95.5

¹ "-" – no registered case

**TRANSPORT (RAILWAY TRANSPORT, PASSENGERS BUS TRANSPORT, MARITIME
TRANSPORT, INLAND WATERWAY TRANSPORT, FREIGHT ROAD TRANSPORT
AND URBAN ELECTRICAL TRANSPORT) IN THE SECOND QUARTER OF 2025
(PRELIMINARY DATA)**

Table 2

**Main indicators of the passenger transport activity,
second quarter of 2024 and 2025**

Passenger transport	II-nd quarter 2024	II-nd quarter 2025	Index of change compared to the second quarter of 2024
Land transport - transported passengers			
Total - thousands	87632.9	93226.2	106.4
National	86481.0	92203.1	106.6
International	1151.9	1023.1	88.8
Land transport - transport performance			
Total - million pkm	2290.8	1977.8	86.3
National	1827.9	1691.1	92.5
International	462.9	286.7	61.9
Water transport - transported passengers			
Total - thousands	63.7	51.9	81.5
National	1.1	2.7	245.5
International	62.6	49.2	78.6
Water transport - transport performance			
Total - million pkm	12.2	12.2	99.9
National	0.0	0.1	1000.0
International	12.2	12.1	99.2
Urban electrical transport - transported passengers			
Total - thousands	82435.0	85947.6	104.3
Urban electrical transport - transport performance			
Total - million pkm	476.1	525.1	110.3