

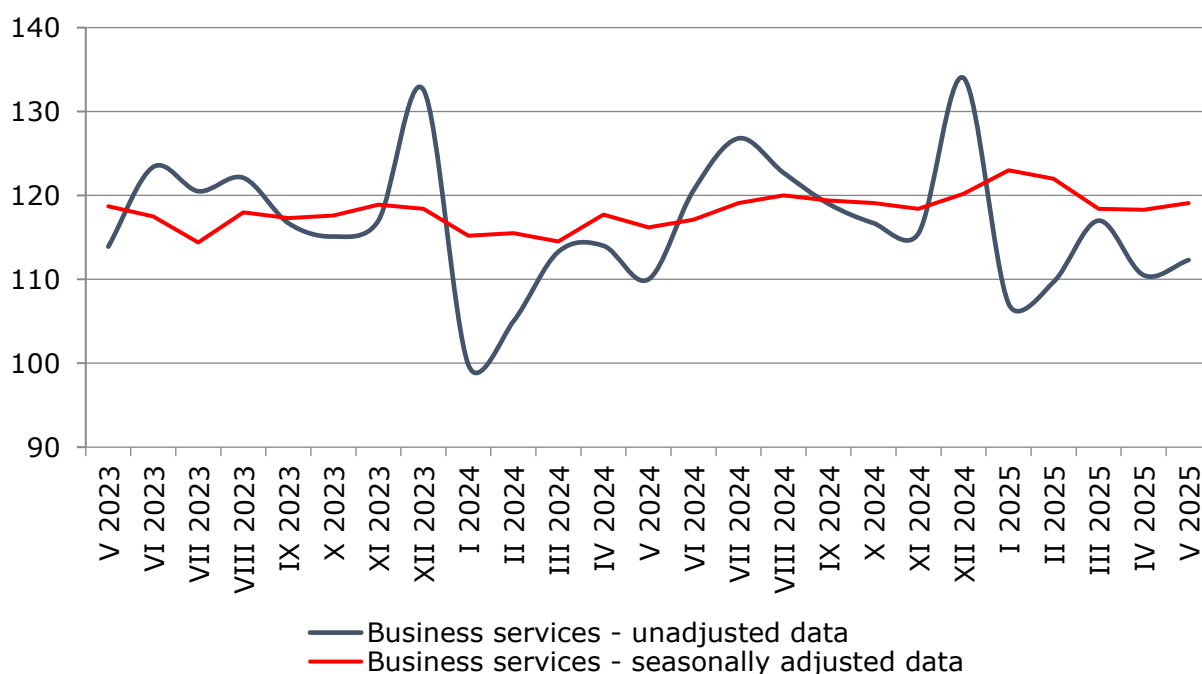


SERVICES PRODUCTION INDICES IN MAY 2025

In May 2025, the total production index in **Services of the business economy**¹ increased by 0.7% compared to the previous month. The data are preliminary and seasonally adjusted.

Compared to May 2024, an increase of 1.9% was registered in the calendar-adjusted index according to preliminary data.

Figure 1. Production indices for Business services (2021 = 100)

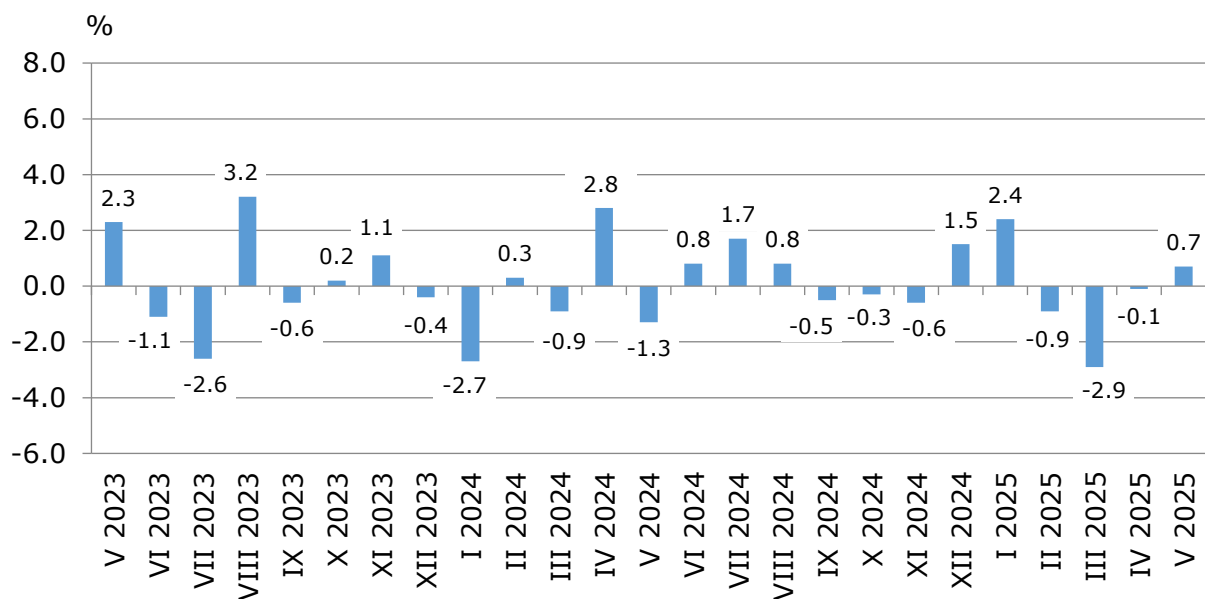


¹ Business services include the following sectors from NACE.BG - 2008: H - Transportation and storage, I - Accommodation and food service activities, J - Information and communication, L - Real estate activities, M_STS - Professional, scientific and technical activities (specific grouping under Regulation (EU) 2019/2152), and N - Administrative and support service activities.

Monthly changes

An increase, compared to the previous month, was reported in the following sectors: 'Professional, scientific and technical activities' - by 3.8%, 'Real estate activities' - by 3.7%, 'Administrative and support service activities' - by 1.1%, and 'Transportation and storage' - by 0.5%. A decrease was seen in the sector 'Information and communication' - by 1.5%, while in the sector 'Accommodation and food service activities' was kept the level of previous month.

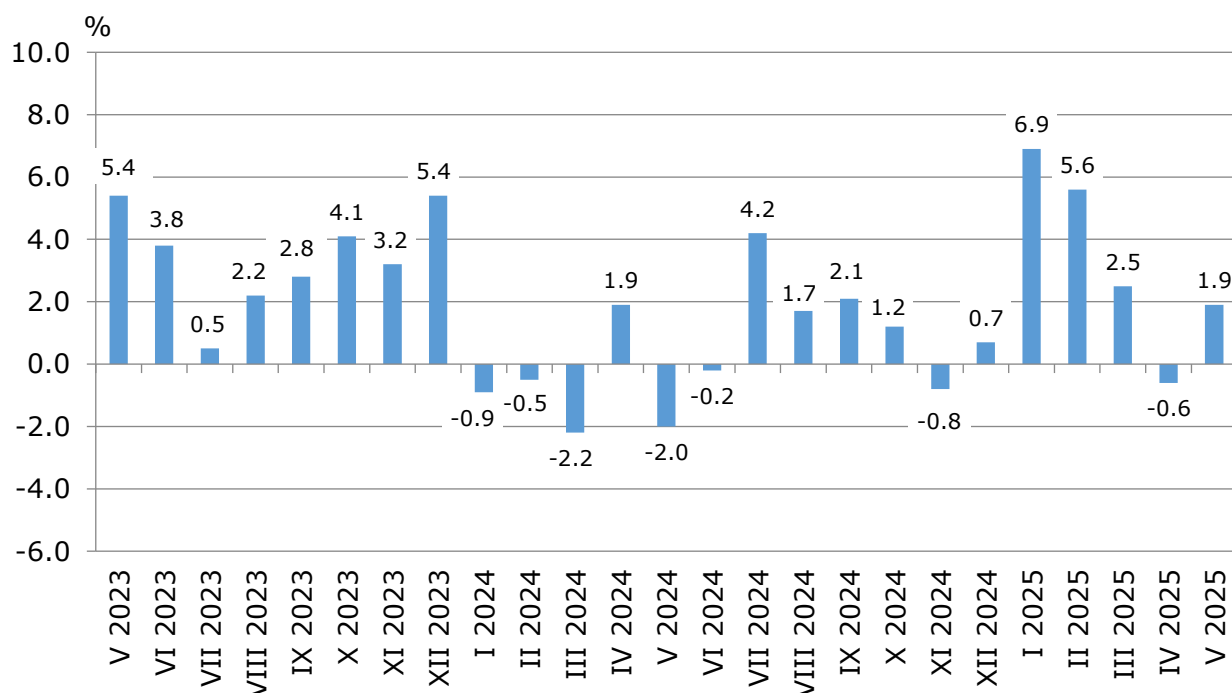
**Figure 2. Changes of production indices for Business services
compared to the previous month
(Seasonally adjusted data)**



Annual changes

On an annual basis, a rise was observed in the following sectors: 'Real estate activities' - by 10.7%, 'Professional, scientific and technical activities' - by 9.0%, 'Transportation and storage' - by 1.5%, and 'Administrative and support service activities' - by 0.8%. A decline was registered in the sectors: 'Accommodation and food service activities' - by 4.4%, and 'Information and communication' - by 0.4%.

**Figure 3. Changes of production indices for Business services
compared to the same month of the previous year
(Calendar-adjusted data)**



Methodological notes

Monthly indices of production in services are calculated and published two months after the reference period (M+2) in accordance with the requirements of Regulation (EU) 2019/2152 of the European Parliament and of the Council for European Business Statistics.

Production indices in services are calculated by deflating the turnover indices for each activity with the corresponding producer price indices. The purpose of the production index is to measure changes in output volume at monthly intervals. The indices are calculated with 2021 as a base year.

Seasonal adjustment is a statistical method, which eliminates the seasonal component of time series.

Calendar adjustment is an adjustment for variations caused by calendar effects, a different number of calendar and working days in the months, national holidays and outliers (for example, the presence of more non-working days in May could contribute to the decline in some activities).

Since July 2024, all dynamic rows have been recalculated based on the 2021 base year and have been published in IS Infostat.

SERVICES PRODUCTION INDICES IN MAY 2025

Annex

Table 1

Changes of production indices in services¹ (Compared to the previous month)

(Per cent)

Economic activities	NACE.BG - 2008	2024	2025				
		XII	I	II	III	IV	V*
Services of the business economy (except trade and financial and insurance activities)	HTNXK	1.5	2.4	-0.9	-2.9	-0.1	0.7
Transportation and storage	H	4.5	0.1	4.9	-8.1	0.8	0.5
Land transport and transport via pipelines	H49	2.9	-0.5	-2.0	-2.9	0.5	2.0
Water transport	H50	7.2	4.0	-9.0	3.0	5.2	1.4
Air transport	H51	30.4	-17.3	6.0	18.0	-4.9	4.6
Warehousing and support activities for transportation	H52	4.9	6.1	20.6	-21.9	3.3	-4.3
Postal and courier activities	H53	-6.5	0.7	-2.4	-7.8	-0.3	4.1
Accommodation and food service activities	I	-0.3	1.0	-0.5	-1.7	-0.9	-0.1
Accommodation	I55	0.5	1.4	0.6	-3.4	-0.1	-1.6
Food and beverage service activities	I56	-0.7	-1.9	0.7	-1.4	-1.9	1.1
Information and communication	J	3.9	4.3	-5.3	-1.9	2.2	-1.5
Publishing activities	J58	-4.7	16.2	-12.3	0.9	6.3	3.7
Motion picture, video, television programme production; programming and broadcasting activities	J59	-23.1	35.6	-21.7	3.2	-6.2	11.3
Programming and broadcasting activities	J60	7.1	9.0	-9.7	-17.7	22.5	-2.9
Telecommunications	J61	-0.9	-5.6	4.5	-2.3	-2.5	-2.2
Computer programming, consultancy and related activities	J62	4.8	6.7	-10.1	0.8	3.6	-2.6
Information service activities	J63	41.3	20.0	-4.8	-13.4	11.0	2.8
Real estate activities	L	14.9	0.5	7.2	-3.5	-4.5	3.7
Professional, scientific and technical activities (specific grouping under Regulation (EU) 2019/2152)	M_STS	-4.8	2.4	-5.8	-1.1	2.7	3.8
Legal and accounting activities	M69	-3.8	20.0	-7.2	2.3	-4.1	7.3
Management consultancy activities	M702	-17.6	-11.5	-7.1	-9.5	1.9	1.0
Architectural and engineering activities; technical testing and analysis	M71	-4.8	12.5	-10.4	-5.2	5.0	6.6
Advertising and market research	M73	10.5	-7.9	-6.8	3.0	10.1	-5.1
Other professional, scientific and technical activities	M74	-0.6	-6.4	5.4	4.8	3.5	5.3
Administrative and support service activities	N	-6.6	5.9	-1.0	3.9	-8.2	1.1
Rental and leasing activities	N77	-0.7	5.2	-1.7	-0.2	-13.0	1.7
Employment activities	N78	13.2	1.4	1.3	-2.6	5.2	-0.4
Travel agency, tour operator reservation service and related activities	N79	1.3	3.8	-0.4	-0.6	-0.1	1.8
Security and investigation activities	N80	-0.4	17.6	-3.8	-8.6	-0.1	-0.9
Services to buildings and landscape activities	N81	-1.8	1.3	-1.7	-4.9	2.3	11.8
Office administrative, office support and other business support activities	N82	-30.0	-1.7	2.1	36.7	-27.4	0.2

¹ Seasonally adjusted data.

* Preliminary data.

Table 2

Changes of production indices in services¹
(Compared to the same month of the previous year)

(Per cent)

Economic activities	NACE.BG - 2008	2024	2025				
		XII	I	II	III	IV	V*
Services of the business economy (except trade and financial and insurance activities)	HTNXK	0.7	6.9	5.6	2.5	-0.6	1.9
Transportation and storage	H	6.5	4.7	7.8	-2.1	-5.2	1.5
Land transport and transport via pipelines	H49	7.1	2.8	-2.6	-5.1	-9.2	-0.2
Water transport	H50	-22.8	19.9	0.6	11.4	6.2	18.0
Air transport	H51	59.8	19.7	18.2	49.6	17.0	16.3
Warehousing and support activities for transportation	H52	-0.6	6.8	31.8	-2.6	0.9	0.8
Postal and courier activities	H53	10.8	1.5	1.0	-5.9	-15.0	-1.3
Accommodation and food service activities	I	0.1	3.2	1.1	-2.8	-5.1	-4.4
Accommodation	I55	0.9	-0.9	7.3	-5.0	-4.1	-7.7
Food and beverage service activities	I56	-0.4	6.4	-3.3	-1.2	-5.8	-1.9
Information and communication	J	0.4	11.7	3.4	2.1	3.5	-0.4
Publishing activities	J58	-20.3	19.9	-5.4	-0.2	4.7	5.3
Motion picture, video, television programme production; programming and broadcasting activities	J59	-24.6	20.0	-17.9	-12.2	-9.4	13.3
Programming and broadcasting activities	J60	-3.6	7.3	-21.1	-22.5	-10.6	-6.3
Telecommunications	J61	6.6	-1.0	0.5	-1.2	-2.9	-8.5
Computer programming, consultancy and related activities	J62	-1.1	16.5	4.6	3.3	6.9	1.5
Information service activities	J63	9.8	38.5	26.2	20.9	19.0	22.5
Real estate activities	L	-5.6	9.9	18.1	15.9	1.3	10.7
Professional, scientific and technical activities (specific grouping under Regulation (EU) 2019/2152)	M_STS	-1.9	7.1	2.5	5.6	2.2	9.0
Legal and accounting activities	M69	-11.7	19.3	7.5	21.0	6.6	4.0
Management consultancy activities	M702	22.6	-11.7	-17.1	-1.0	-9.6	-7.2
Architectural and engineering activities; technical testing and analysis	M71	-2.4	30.4	24.3	-0.6	0.7	18.8
Advertising and market research	M73	-6.0	-13.7	-14.3	-6.2	-4.2	1.1
Other professional, scientific and technical activities	M74	-6.9	5.1	9.1	10.7	15.9	25.4
Administrative and support service activities	N	0.7	1.6	7.4	9.4	0.7	0.8
Rental and leasing activities	N77	-1.0	-30.5	-5.8	-11.0	-24.9	-14.2
Employment activities	N78	13.1	21.9	25.8	18.7	39.3	11.8
Travel agency, tour operator reservation service and related activities	N79	-4.0	14.4	9.0	10.6	1.5	6.2
Security and investigation activities	N80	-5.0	19.4	10.7	1.6	1.8	-0.8
Services to buildings and landscape activities	N81	0.6	1.1	1.8	-7.8	-6.7	17.2
Office administrative, office support and other business support activities	N82	2.1	-3.9	2.2	35.4	1.1	-0.9

¹ Calendar-adjusted data.

* Preliminary data.

SERVICES PRODUCTION INDICES IN MAY 2025

Table 3

Production indices in services - seasonally adjusted (2021 = 100)

NACE.BG - 2008	2024								2025				
	V	VI	VII	VIII	IX	X	XI	XII	I	II	III	IV	V*
HTNXK	116.2	117.1	119.1	120.0	119.4	119.1	118.4	120.2	123.0	122.0	118.4	118.3	119.1
H	110.8	109.7	113.0	109.5	109.9	114.0	109.9	114.9	115.0	120.7	110.9	111.9	112.4
H49	104.7	105.2	107.0	104.0	104.0	106.6	104.4	107.4	106.8	104.7	101.6	102.2	104.2
H50	121.0	131.4	128.0	136.1	125.0	125.1	127.9	137.1	142.5	129.7	133.6	140.6	142.5
H51	283.2	255.0	250.9	229.1	256.4	309.1	240.3	313.3	259.1	274.7	324.3	308.4	322.6
H52	103.8	100.9	107.0	103.6	103.1	104.7	102.1	107.1	113.6	137.0	107.0	110.6	105.8
H53	118.1	120.2	130.2	127.3	126.2	133.1	132.8	124.2	125.1	122.2	112.6	112.3	116.9
I	142.9	143.7	144.4	143.6	144.0	143.7	144.4	144.0	145.4	144.7	142.2	141.0	140.8
I55	182.0	188.6	190.7	188.6	187.2	179.9	178.6	179.4	182.0	183.2	176.9	176.7	173.8
I56	120.7	119.7	117.9	117.8	118.8	122.3	124.2	123.2	120.9	121.8	120.1	117.8	119.1
J	117.5	115.9	119.7	120.3	122.0	120.4	116.6	121.1	126.3	119.6	117.3	119.9	118.1
J58	92.4	88.6	110.6	150.4	86.2	85.1	89.0	84.8	98.5	86.4	87.2	92.6	96.1
J59	83.1	123.6	109.6	87.4	109.5	106.7	107.0	82.2	111.5	87.3	90.0	84.4	93.9
J60	82.0	75.0	76.6	82.1	79.7	77.7	73.5	78.7	85.7	77.4	63.7	78.0	75.7
J61	121.4	120.9	122.2	120.7	125.6	125.7	123.4	122.4	115.5	120.7	118.0	115.1	112.6
J62	120.0	116.8	121.2	122.7	124.9	122.3	120.3	126.1	134.5	120.9	121.9	126.3	123.0
J63	121.0	110.6	122.6	115.6	123.3	120.6	92.7	130.9	157.1	149.6	129.6	143.8	147.8
L	95.5	105.3	94.9	97.0	103.5	96.5	88.9	102.2	102.7	110.1	106.2	101.5	105.3
M_STS	115.2	119.0	125.6	135.6	124.4	124.0	128.8	122.6	125.6	118.3	117.0	120.2	124.7
M69	130.0	117.7	124.9	136.5	129.3	128.9	119.0	114.4	137.3	127.4	130.4	125.1	134.2
M702	116.7	144.3	170.4	199.9	174.5	148.4	174.8	144.1	127.5	118.4	107.2	109.2	110.3
M71	111.1	105.2	109.7	113.9	109.4	116.0	126.4	120.3	135.4	121.3	115.0	120.7	128.7
M73	114.9	123.9	115.2	115.8	111.5	120.8	114.1	126.0	116.0	108.1	111.4	122.6	116.3
M74	102.9	112.2	115.4	120.8	104.4	109.6	114.3	113.6	106.3	112.0	117.4	121.6	128.1
N	116.3	117.9	114.9	115.2	116.0	113.3	125.3	117.0	123.9	122.7	127.5	117.1	118.3
N77	116.3	126.3	129.3	119.0	120.1	118.6	114.2	113.4	119.4	117.4	117.1	101.9	103.6
N78	124.6	121.1	111.1	112.9	116.3	115.9	119.1	134.9	136.8	138.6	134.9	141.9	141.4
N79	197.0	205.7	200.6	207.4	199.9	191.1	194.7	197.3	204.8	203.9	202.8	202.5	206.1
N80	103.2	98.8	97.6	103.4	101.9	96.3	100.4	99.9	117.5	113.0	103.3	103.2	102.3
N81	103.3	108.3	101.2	100.2	103.9	105.6	112.7	110.7	112.1	110.2	104.9	107.3	120.0
N82	107.5	110.9	107.4	105.6	109.3	108.4	153.4	107.4	105.6	107.8	147.3	106.9	107.1

* Preliminary data.

SERVICES PRODUCTION INDICES IN MAY 2025

Table 4

Production indices in services - calendar-adjusted (2021 = 100)

NACE.BG - 2008	2024								2025				
	V	VI	VII	VIII	IX	X	XI	XII	I	II	III	IV	V*
HTNXK	112.1	124.2	129.8	126.8	122.5	117.6	114.9	134.4	106.1	110.2	117.1	111.5	114.2
H	110.2	115.6	126.2	111.1	111.4	118.7	110.2	110.4	97.6	109.9	111.4	110.0	111.8
H49	104.2	109.4	115.4	98.5	101.8	112.9	109.5	104.7	91.0	100.1	107.1	101.7	104.0
H50	130.2	135.8	153.3	151.0	129.5	134.9	116.6	133.2	108.8	105.4	130.9	143.7	153.6
H51	281.8	326.8	424.3	373.6	350.6	301.8	131.9	212.9	142.0	146.8	223.9	244.8	327.7
H52	103.4	105.1	116.6	106.8	104.3	108.0	100.9	104.9	100.9	124.5	107.7	112.1	104.2
H53	113.6	120.8	127.4	119.1	118.7	134.4	146.7	136.3	121.2	117.6	114.2	109.8	112.2
I	136.3	161.3	202.4	222.1	158.1	121.4	109.5	124.9	117.6	121.4	123.7	120.2	130.3
I55	159.5	220.4	302.2	341.3	219.5	132.0	114.2	136.3	132.0	154.8	139.2	142.0	147.2
I56	122.7	126.9	144.1	152.5	122.3	115.1	106.7	118.2	109.2	102.5	114.6	107.4	120.4
J	112.9	120.0	117.4	113.4	121.3	122.0	119.7	150.8	114.5	108.3	119.8	113.8	112.4
J58	82.4	93.7	135.1	149.8	105.7	89.0	91.0	96.4	85.8	68.9	73.2	80.9	86.8
J59	71.7	123.0	98.8	70.1	93.1	123.4	122.8	153.7	83.0	69.6	88.3	73.0	81.2
J60	87.4	79.0	64.5	60.1	75.0	95.8	100.5	82.5	60.1	70.6	58.0	89.1	81.9
J61	120.8	124.8	124.2	123.5	130.2	126.3	123.8	134.4	108.6	111.2	114.6	109.1	110.6
J62	113.2	122.5	115.6	111.1	121.2	123.6	120.2	168.8	121.2	108.2	130.2	119.1	114.9
J63	114.5	107.3	116.4	102.0	116.4	115.1	115.6	158.7	144.1	143.7	133.4	141.7	140.3
L	87.7	109.3	96.8	97.7	111.2	91.4	85.5	123.4	95.8	108.4	105.7	96.1	97.1
M_STS	108.7	125.4	126.4	126.0	122.3	122.8	129.4	168.8	103.8	106.0	121.1	113.1	118.4
M69	129.0	125.8	127.7	122.7	122.6	123.9	114.3	142.7	120.7	116.8	138.7	126.3	134.1
M702	101.7	155.1	179.0	197.9	195.9	145.4	167.4	187.1	106.1	104.4	104.5	98.2	94.4
M71	100.3	107.7	108.7	109.8	97.5	109.6	127.5	199.2	103.5	104.6	121.0	103.7	119.2
M73	115.2	128.9	111.3	98.8	105.0	134.8	134.7	168.4	83.5	91.4	109.6	123.9	116.5
M74	97.4	118.6	113.1	108.3	102.3	109.0	111.9	145.1	98.7	107.9	124.8	114.5	122.1
N	114.5	128.1	126.7	127.0	126.1	111.7	121.1	118.4	106.3	112.8	120.9	110.4	115.4
N77	124.2	130.0	141.2	121.5	121.6	113.1	115.3	123.3	97.6	103.5	109.4	98.3	106.5
N78	123.1	120.5	110.4	111.2	114.4	117.6	119.1	155.4	121.0	136.0	137.6	141.8	137.7
N79	162.0	301.7	326.0	370.5	323.1	167.3	95.8	123.0	120.1	125.8	139.8	141.5	172.0
N80	101.7	98.9	98.9	105.6	103.9	98.9	99.6	107.6	106.9	111.8	100.2	101.5	100.9
N81	106.6	116.5	109.9	103.4	102.9	106.0	112.7	116.3	95.9	100.4	101.7	105.2	125.0
N82	106.5	119.1	105.8	100.2	111.7	108.3	167.5	104.8	101.7	106.2	147.5	102.8	105.6

* Preliminary data.