

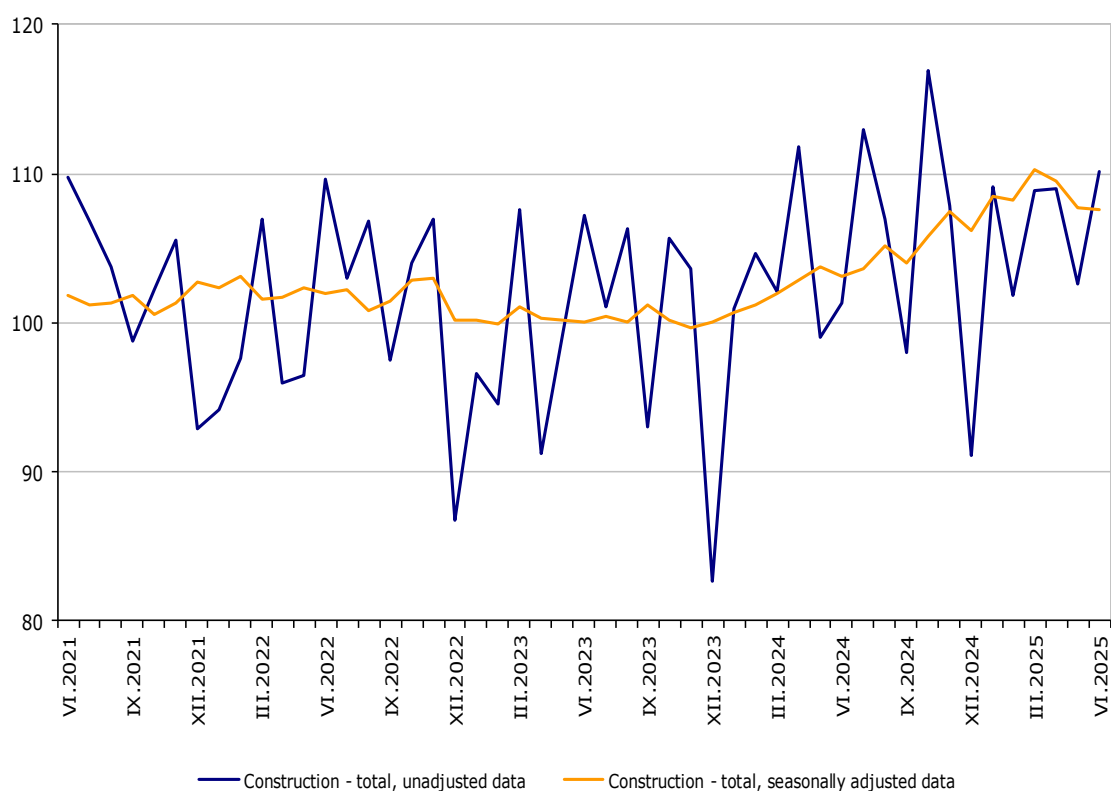


CONSTRUCTION PRODUCTION INDICES IN JUNE 2025

In June 2025, the production index in the 'Construction' section decreased by 0.2% compared to the previous month (Table 1). The data are preliminary and seasonally adjusted.

The calendar-adjusted data showed a rise of 4.3% in the construction production compared to the same month of 2024 (Table 2).

Figure 1. Construction Production Indices (2021 = 100)

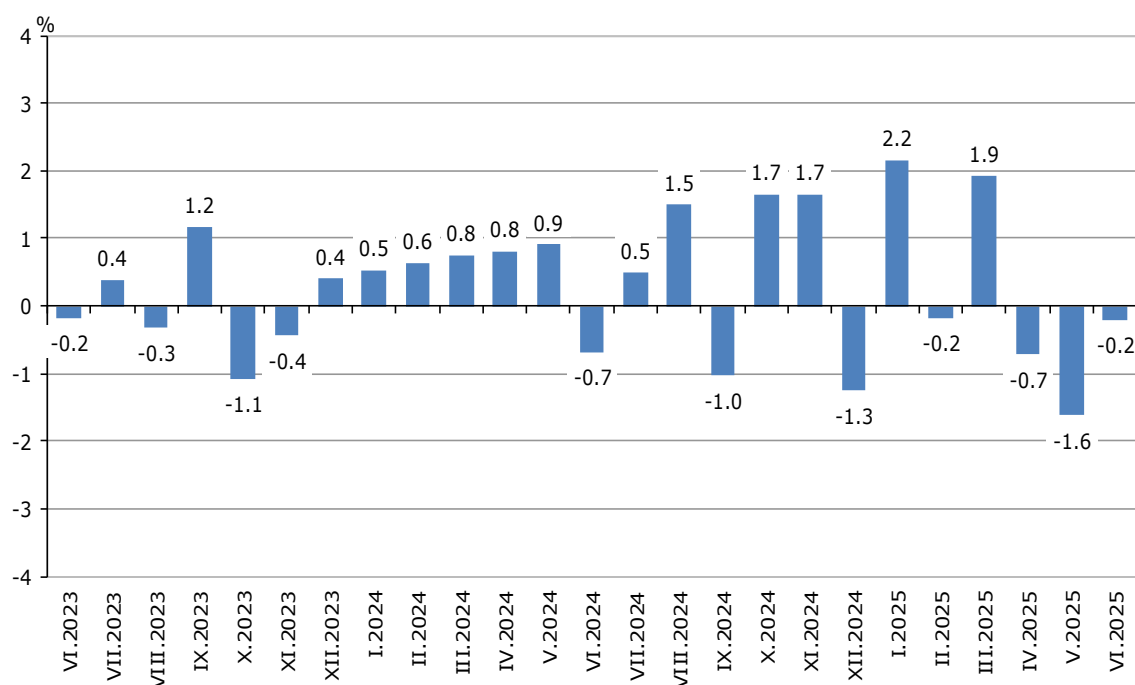


CONSTRUCTION PRODUCTION INDICES IN JUNE 2025

Monthly changes

In June 2025, compared to the previous month, a decline was observed in the production of civil engineering - by 1.6%. An increase was seen in the building construction - by 0.4%, as well as in the specialized construction activities - by 0.2% (Table 1).

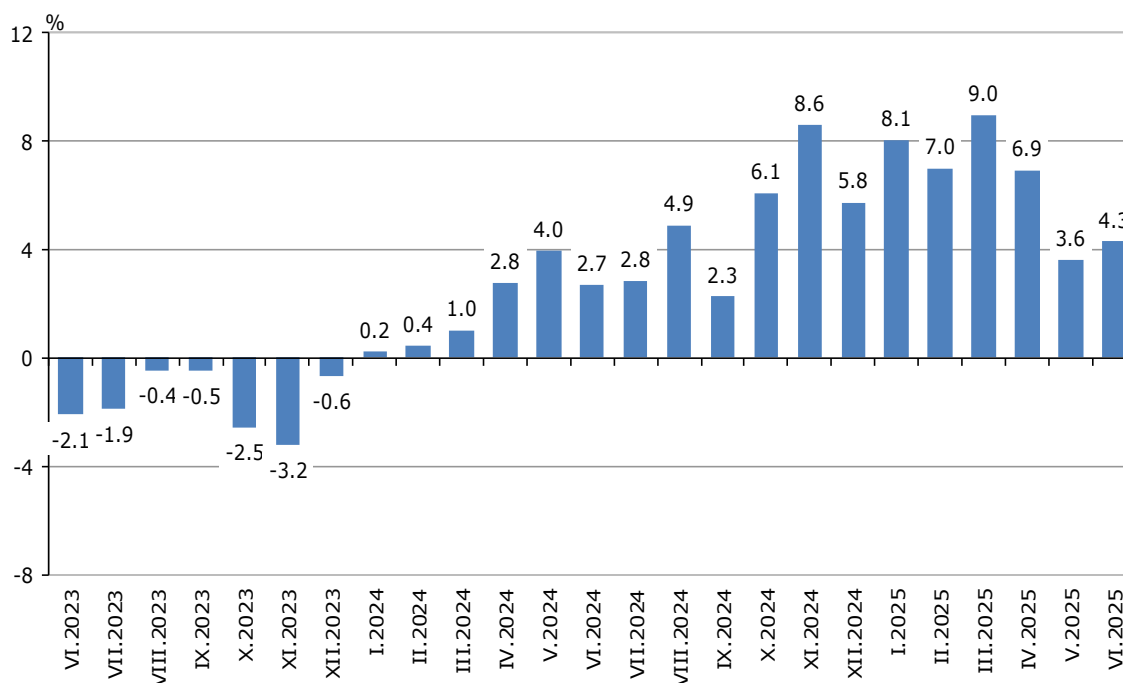
Figure 2. Changes of the Construction Production Indices compared to the previous month
(Seasonally adjusted, 2021 = 100)



Annual changes

In June 2025, compared to the same month of 2024, a rise of the production was registered in the civil engineering - by 5.5%, in the construction of buildings - by 4.2%, and in the specialized construction activities - by 3.6% (Table 2).

Figure 3. Changes of the Construction Production Indices compared to the same month of the previous year (Calendar-adjusted, 2021 = 100)



Methodological notes

The monthly indices show the short-term changes in the construction production between two comparable periods. This information can be used to analyse the current state of construction activity in the country, as well as a short-term forecast for its future development.

The indices are calculated on the basis of information on hours worked in construction. The data are collected with a monthly sample survey that includes construction enterprises, whose production exceeds 75% of the total production in construction. Construction Production Indices are calculated on the base 2021 = 100. Since 2024, the data has been provided according to the requirements of Regulation (EU) 2019/2152 and Regulation (EU) 2020/1197.

Seasonal adjustment is a statistical method that eliminates the seasonal component of time series.

Calendar adjustment is an adjustment for variations in the monthly data, caused by calendar effects, the different number of calendar and working days in the months, national holidays and outliers (for example, the presence of more non-working days in June could contribute to the decline in the production in some activities).

Since July 2024, all dynamic rows have been recalculated based on 2021 as base year and are published in IS Infostat.

CONSTRUCTION PRODUCTION INDICES IN JUNE 2025

Annex

Table 1

Changes of the Construction Production Indices compared to the previous month¹

(Per cent)

Indicators	2025					
	I	II	III	IV	V	VI
Construction - total	2.2	-0.2	1.9	-0.7	-1.6	-0.2
Construction of buildings	2.0	-0.9	-0.1	0.6	0.3	0.4
Civil engineering	3.6	-1.6	2.7	-1.5	0.2	-1.6
Specialized construction activities	1.3	1.7	3.5	-1.5	-4.9	0.2

¹ Seasonally adjusted.

Table 2

Changes of the Construction Production Indices compared to the same month of the previous year¹

(Per cent)

Indicators	2025					
	I	II	III	IV	V	VI
Construction - total	8.1	7.0	9.0	6.9	3.6	4.3
Construction of buildings	5.6	5.3	2.2	2.9	2.8	4.2
Civil engineering	11.0	8.2	12.8	8.4	9.6	5.5
Specialized construction activities	8.8	8.1	14.1	10.5	0.3	3.6

¹ Calendar-adjusted.

CONSTRUCTION PRODUCTION INDICES IN JUNE 2025

Table 3

Construction Production Indices (Seasonally adjusted, 2021 = 100)

Indicators	2024							2025					
	VI	VII	VIII	IX	X	XI	XII	I	II	III	IV	V	VI
Construction - total	103.1	103.6	105.1	104.1	105.8	107.5	106.2	108.5	108.3	110.3	109.5	107.8	107.6
Construction of buildings	102.6	102.9	103.4	102.9	105.4	105.8	104.0	106.0	105.1	105.1	105.7	106.0	106.4
Civil engineering	94.5	94.4	96.1	94.6	96.9	98.9	98.0	101.5	99.8	102.5	101.0	101.1	99.5
Specialized construction activities	111.3	112.6	115.5	113.9	114.2	117.4	116.2	117.7	119.6	123.8	122.0	115.9	116.1

Table 4

Construction Production Indices (Calendar-adjusted, 2021 = 100)

Indicators	2024							2025					
	VI	VII	VIII	IX	X	XI	XII	I	II	III	IV	V	VI
Construction - total	107.6	109.0	107.6	99.2	112.8	109.8	95.1	106.6	103.9	115.1	108.6	105.3	112.2
Construction of buildings	106.6	107.0	105.2	96.7	112.9	107.5	92.3	106.0	100.8	109.4	105.9	104.3	111.1
Civil engineering	99.4	100.6	100.1	91.1	104.0	102.1	88.3	96.9	94.6	107.0	99.0	98.4	104.8
Specialized construction activities	116.0	118.9	117.2	109.4	120.7	119.5	104.6	115.9	116.0	129.6	120.6	112.7	120.1