

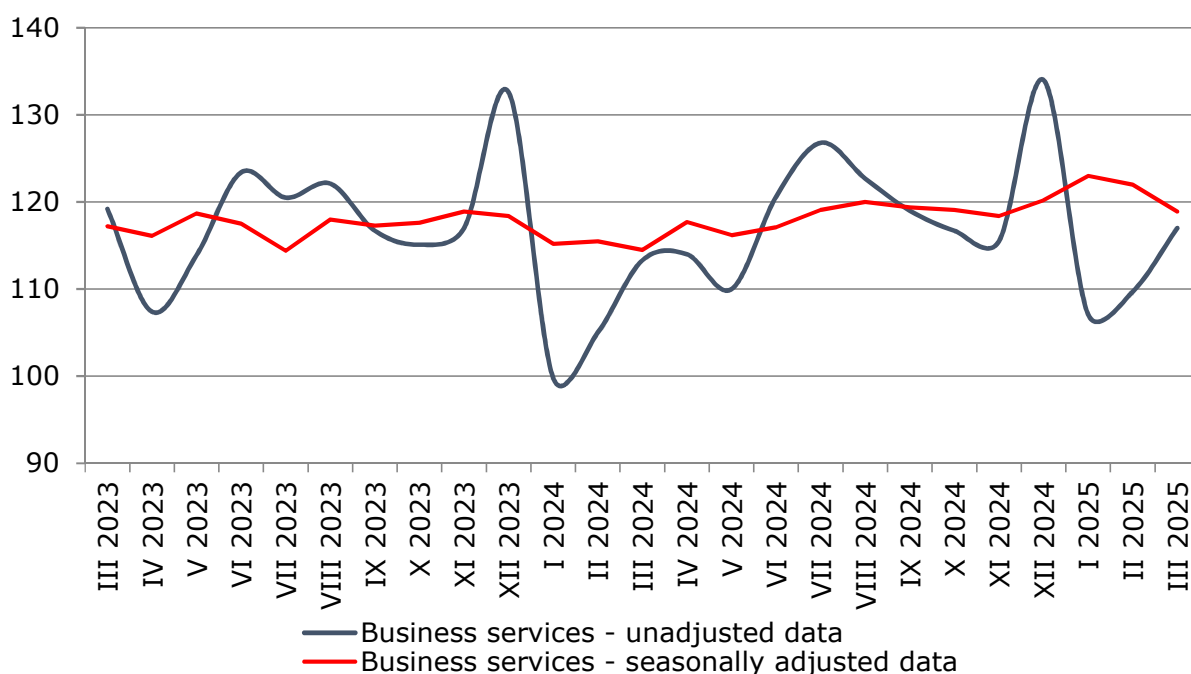


SERVICES PRODUCTION INDICES IN MARCH 2025

In March 2025, the total production index in **Services of the business economy**¹ decreased by 2.5% compared to the previous month. The data are preliminary and seasonally adjusted.

Compared to March 2024, an increase of 2.7% was registered in the calendar-adjusted index according to preliminary data.

Figure 1. Production indices for Business services (2021 = 100)

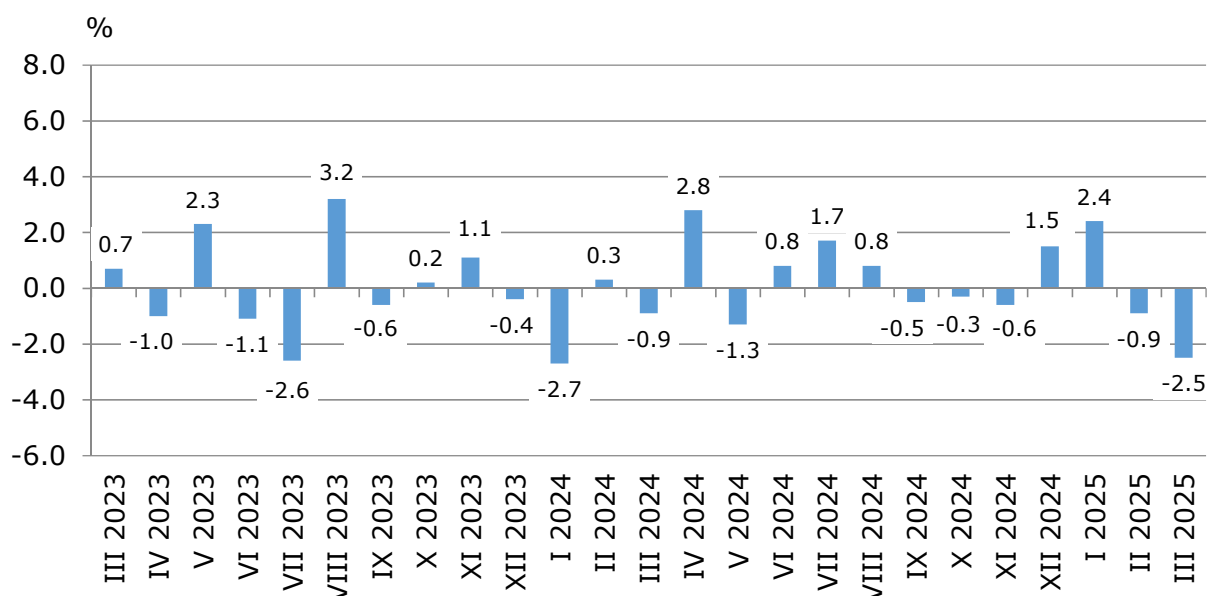


¹ Business services include the following sectors from NACE.BG - 2008: H - Transportation and storage, I - Accommodation and food service activities, J - Information and communication, L - Real estate activities, M_STS - Professional, scientific and technical activities (specific grouping under Regulation (EU) 2019/2152), and N - Administrative and support service activities.

Monthly changes

A decrease, compared to the previous month, was reported in the following sectors: 'Transportation and storage' - by 8.2%, 'Real estate activities' - by 3.1%, 'Information and communication' - by 1.4%, and in 'Accommodation and food service activities' - by 1.2%. An increase was seen in the sectors: 'Administrative and support service activities' - by 3.9%, and 'Professional, scientific and technical activities' - by 0.5%.

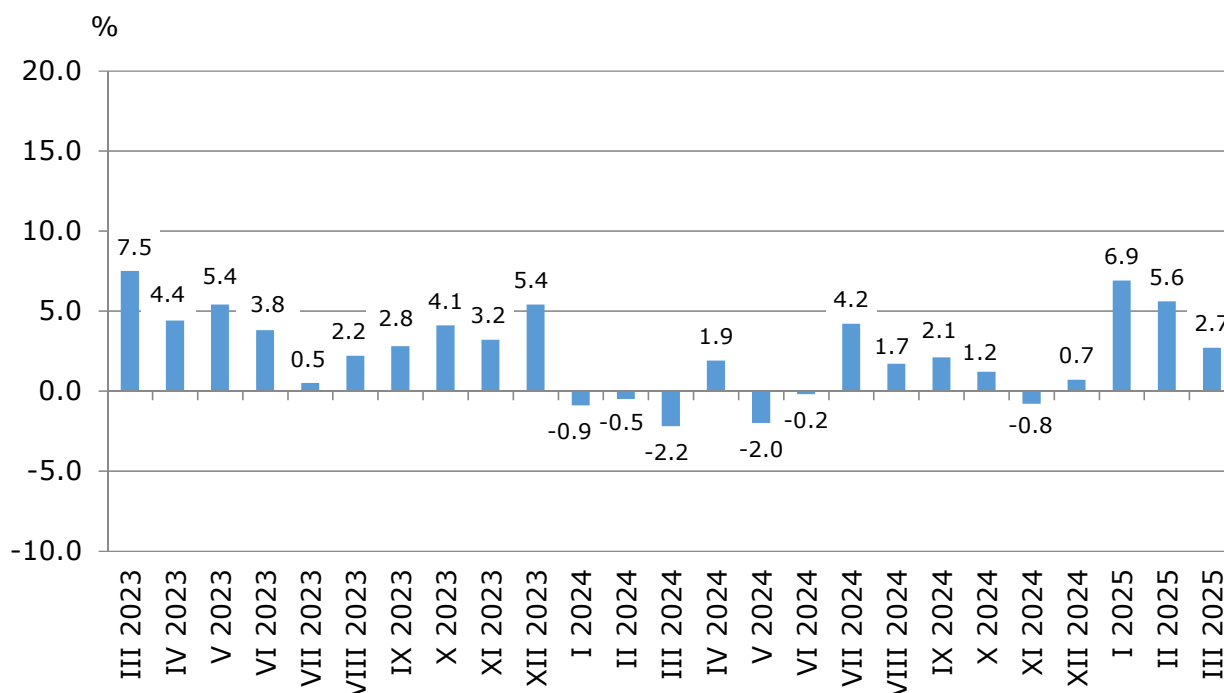
Figure 2. Changes of production indices for Business services compared to the previous month (Seasonally adjusted data)



Annual changes

On an annual basis, a rise was observed in the sectors: 'Real estate activities' - by 15.8%, 'Administrative and support service activities' - by 9.2%, 'Professional, scientific and technical activities' - by 6.9%, and 'Information and communication' - by 2.1%. A decrease was seen in the following sectors: 'Accommodation and food service activities' - by 2.8%, and 'Transportation and storage' - by 2.2%.

**Figure 3. Changes of production indices for Business services
compared to the same month of the previous year
(Calendar-adjusted data)**



Methodological notes

Monthly indices of production in services are calculated and published two months after the reference period (M+2) in accordance with the requirements of Regulation (EU) 2019/2152 of the European Parliament and of the Council for European Business Statistics.

Production indices in services are calculated by deflating the turnover indices for each activity with the corresponding producer price indices. The purpose of the production index is to measure changes in output volume at monthly intervals. The indices are calculated with 2021 as a base year.

Seasonal adjustment is a statistical method, which eliminates the seasonal component of time series.

Calendar adjustment is an adjustment for variations caused by calendar effects, a different number of calendar and working days in the months, national holidays and outliers (for example, the presence of more non-working days in May could contribute to the decline in some activities).

Since July 2024, all dynamic rows have been recalculated based on the 2021 base year and have been published in IS Infostat.

SERVICES PRODUCTION INDICES IN MARCH 2025

Annex

Table 1

Changes of production indices in services¹ (Compared to the previous month)

(Per cent)

Economic activities	NACE.BG - 2008	2024			2025		
		X	XI	XII	I	II	III*
Services of the business economy (except trade and financial and insurance activities)	HTNXK	-0.3	-0.6	1.5	2.4	-0.9	-2.5
Transportation and storage	H	3.7	-3.6	4.5	0.1	4.9	-8.2
Land transport and transport via pipelines	H49	2.5	-2.0	2.9	-0.5	-2.0	-3.3
Water transport	H50	0.1	2.2	7.2	4.0	-9.0	2.9
Air transport	H51	20.5	-22.3	30.4	-17.3	6.0	18.9
Warehousing and support activities for transportation	H52	1.5	-2.5	4.9	6.1	20.6	-22.0
Postal and courier activities	H53	5.4	-0.2	-6.5	0.7	-2.4	-7.1
Accommodation and food service activities	I	-0.2	0.5	-0.3	1.0	-0.5	-1.2
Accommodation	I55	-3.9	-0.7	0.5	1.4	0.6	-3.8
Food and beverage service activities	I56	3.0	1.5	-0.7	-1.9	0.7	1.1
Information and communication	J	-1.3	-3.2	3.9	4.3	-5.3	-1.4
Publishing activities	J58	-1.3	4.6	-4.7	16.2	-12.3	-0.7
Motion picture, video, television programme production; programming and broadcasting activities	J59	-2.6	0.3	-23.1	35.6	-21.7	3.5
Programming and broadcasting activities	J60	-2.5	-5.5	7.1	9.0	-9.7	0.4
Telecommunications	J61	0.1	-1.8	-0.9	-5.6	4.5	-1.9
Computer programming, consultancy and related activities	J62	-2.1	-1.6	4.8	6.7	-10.1	0.8
Information service activities	J63	-2.2	-23.1	41.3	20.0	-4.8	-12.9
Real estate activities	L	-6.8	-7.9	14.9	0.5	7.2	-3.1
Professional, scientific and technical activities (specific grouping under Regulation (EU) 2019/2152)	M_STS	-0.4	3.9	-4.8	2.4	-5.8	0.5
Legal and accounting activities	M69	-0.3	-7.7	-3.8	20.0	-7.2	2.6
Management consultancy activities	M702	-14.9	17.8	-17.6	-11.5	-7.1	-9.6
Architectural and engineering activities; technical testing and analysis	M71	6.0	9.0	-4.8	12.5	-10.4	0.9
Advertising and market research	M73	8.4	-5.5	10.5	-7.9	-6.8	2.7
Other professional, scientific and technical activities	M74	5.0	4.3	-0.6	-6.4	5.4	4.7
Administrative and support service activities	N	-2.3	10.6	-6.6	5.9	-1.0	3.9
Rental and leasing activities	N77	-1.2	-3.7	-0.7	5.2	-1.7	-0.7
Employment activities	N78	-0.3	2.8	13.2	1.4	1.3	-2.9
Travel agency, tour operator reservation service and related activities	N79	-4.4	1.9	1.3	3.8	-0.4	0.8
Security and investigation activities	N80	-5.5	4.2	-0.4	17.6	-3.8	-8.8
Services to buildings and landscape activities	N81	1.7	6.7	-1.8	1.3	-1.7	-4.7
Office administrative, office support and other business support activities	N82	-0.8	41.6	-30.0	-1.7	2.1	36.6

¹ Seasonally adjusted data.

* Preliminary data.

Table 2

Changes of production indices in services¹
(Compared to the same month of the previous year)

(Per cent)

Economic activities	NACE.BG - 2008	2024			2025		
		X	XI	XII	I	II	III*
Services of the business economy (except trade and financial and insurance activities)	HTNXK	1.2	-0.8	0.7	6.9	5.6	2.7
Transportation and storage	H	2.5	1.0	6.5	4.7	7.8	-2.2
Land transport and transport via pipelines	H49	3.2	3.6	7.1	2.8	-2.6	-5.2
Water transport	H50	-23.9	-22.7	-22.8	19.9	0.6	11.4
Air transport	H51	25.2	9.2	59.8	19.7	18.2	49.6
Warehousing and support activities for transportation	H52	-5.4	-8.0	-0.6	6.8	31.8	-2.6
Postal and courier activities	H53	17.9	18.3	10.8	1.5	1.0	-5.9
Accommodation and food service activities	I	2.6	3.7	0.1	3.2	1.1	-2.8
Accommodation	I55	9.6	5.6	0.9	-0.9	7.3	-5.0
Food and beverage service activities	I56	-1.6	2.5	-0.4	6.4	-3.3	-0.4
Information and communication	J	3.4	-0.4	0.4	11.7	3.4	2.1
Publishing activities	J58	-3.1	-13.3	-20.3	19.9	-5.4	-2.5
Motion picture, video, television programme production; programming and broadcasting activities	J59	-8.7	41.0	-24.6	20.0	-17.9	-12.1
Programming and broadcasting activities	J60	-8.7	-17.5	-3.6	7.3	-21.1	-22.5
Telecommunications	J61	12.8	7.4	6.6	-1.0	0.5	-1.2
Computer programming, consultancy and related activities	J62	-0.1	-0.4	-1.1	16.5	4.6	3.3
Information service activities	J63	-2.3	-27.4	9.8	38.5	26.2	20.9
Real estate activities	L	-8.6	-29.0	-5.6	9.9	18.1	15.8
Professional, scientific and technical activities (specific grouping under Regulation (EU) 2019/2152)	M_STS	2.5	6.0	-1.9	7.1	2.5	6.9
Legal and accounting activities	M69	7.6	-7.9	-11.7	19.3	7.5	21.2
Management consultancy activities	M702	36.1	48.4	22.6	-11.7	-17.1	-1.5
Architectural and engineering activities; technical testing and analysis	M71	-1.0	17.6	-2.4	30.4	24.3	5.0
Advertising and market research	M73	-12.0	-13.7	-6.0	-13.7	-14.3	-6.4
Other professional, scientific and technical activities	M74	-10.4	-6.0	-6.9	5.1	9.1	10.7
Administrative and support service activities	N	-5.2	0.6	0.7	1.6	7.4	9.2
Rental and leasing activities	N77	-0.2	-10.8	-1.0	-30.5	-5.8	-12.0
Employment activities	N78	-9.5	-8.2	13.1	21.9	25.8	18.5
Travel agency, tour operator reservation service and related activities	N79	-12.1	-14.0	-4.0	14.4	9.0	10.6
Security and investigation activities	N80	-7.8	-8.3	-5.0	19.4	10.7	1.6
Services to buildings and landscape activities	N81	-8.7	0.5	0.6	1.1	1.8	-7.7
Office administrative, office support and other business support activities	N82	3.6	29.0	2.1	-3.9	2.2	35.4

¹ Calendar-adjusted data.

* Preliminary data.

SERVICES PRODUCTION INDICES IN MARCH 2025

Table 3

Production indices in services - seasonally adjusted (2021 = 100)

NACE.BG - 2008	2024										2025		
	III	IV	V	VI	VII	VIII	IX	X	XI	XII	I	II	III*
HTNXK	114.5	117.7	116.2	117.1	119.1	120.0	119.4	119.1	118.4	120.2	123.0	122.0	118.9
H	111.3	117.2	110.8	109.7	113.0	109.5	109.9	114.0	109.9	114.9	115.0	120.7	110.8
H49	105.8	111.2	104.7	105.2	107.0	104.0	104.0	106.6	104.4	107.4	106.8	104.7	101.2
H50	119.3	132.4	121.0	131.4	128.0	136.1	125.0	125.1	127.9	137.1	142.5	129.7	133.5
H51	226.8	266.2	283.2	255.0	250.9	229.1	256.4	309.1	240.3	313.3	259.1	274.7	326.8
H52	109.2	111.3	103.8	100.9	107.0	103.6	103.1	104.7	102.1	107.1	113.6	137.0	106.9
H53	116.7	128.9	118.1	120.2	130.2	127.3	126.2	133.1	132.8	124.2	125.1	122.2	113.5
I	143.8	144.6	142.9	143.7	144.4	143.6	144.0	143.7	144.4	144.0	145.4	144.7	142.9
I55	179.6	182.3	182.0	188.6	190.7	188.6	187.2	179.9	178.6	179.4	182.0	183.2	176.3
I56	122.0	122.1	120.7	119.7	117.9	117.8	118.8	122.3	124.2	123.2	120.9	121.8	123.1
J	113.9	115.8	117.5	115.9	119.7	120.3	122.0	120.4	116.6	121.1	126.3	119.6	117.9
J58	85.8	88.8	92.4	88.6	110.6	150.4	86.2	85.1	89.0	84.8	98.5	86.4	85.8
J59	101.9	92.2	83.1	123.6	109.6	87.4	109.5	106.7	107.0	82.2	111.5	87.3	90.3
J60	71.4	96.3	82.0	75.0	76.6	82.1	79.7	77.7	73.5	78.7	85.7	77.4	77.7
J61	118.8	118.0	121.4	120.9	122.2	120.7	125.6	125.7	123.4	122.4	115.5	120.7	118.4
J62	116.5	118.1	120.0	116.8	121.2	122.7	124.9	122.3	120.3	126.1	134.5	120.9	121.9
J63	106.9	120.2	121.0	110.6	122.6	115.6	123.3	120.6	92.7	130.9	157.1	149.6	130.3
L	92.7	101.4	95.5	105.3	94.9	97.0	103.5	96.5	88.9	102.2	102.7	110.1	106.6
M_STS	110.8	114.4	115.2	119.0	125.6	135.6	124.4	124.0	128.8	122.6	125.6	118.3	118.9
M69	108.6	113.6	130.0	117.7	124.9	136.5	129.3	128.9	119.0	114.4	137.3	127.4	130.8
M702	104.0	117.8	116.7	144.3	170.4	199.9	174.5	148.4	174.8	144.1	127.5	118.4	107.0
M71	116.4	111.4	111.1	105.2	109.7	113.9	109.4	116.0	126.4	120.3	135.4	121.3	122.5
M73	118.2	128.6	114.9	123.9	115.2	115.8	111.5	120.8	114.1	126.0	116.0	108.1	111.1
M74	106.4	105.3	102.9	112.2	115.4	120.8	104.4	109.6	114.3	113.6	106.3	112.0	117.3
N	116.9	113.3	116.3	117.9	114.9	115.2	116.0	113.3	125.3	117.0	123.9	122.7	127.5
N77	129.3	122.7	116.3	126.3	129.3	119.0	120.1	118.6	114.2	113.4	119.4	117.4	116.5
N78	116.4	97.7	124.6	121.1	111.1	112.9	116.3	115.9	119.1	134.9	136.8	138.6	134.6
N79	193.1	197.0	197.0	205.7	200.6	207.4	199.9	191.1	194.7	197.3	204.8	203.9	205.6
N80	101.0	100.9	103.2	98.8	97.6	103.4	101.9	96.3	100.4	99.9	117.5	113.0	103.0
N81	112.2	113.6	103.3	108.3	101.2	100.2	103.9	105.6	112.7	110.7	112.1	110.2	105.1
N82	107.1	106.1	107.5	110.9	107.4	105.6	109.3	108.4	153.4	107.4	105.6	107.8	147.3

* Preliminary data.

SERVICES PRODUCTION INDICES IN MARCH 2025

Table 4

Production indices in services - calendar-adjusted (2021 = 100)

NACE.BG - 2008	2024										2025		
	III	IV	V	VI	VII	VIII	IX	X	XI	XII	I	II	III*
HTNXK	114.3	112.2	112.1	124.2	129.8	126.8	122.5	117.6	114.9	134.4	106.1	110.2	117.4
H	113.9	116.0	110.2	115.6	126.2	111.1	111.4	118.7	110.2	110.4	97.6	109.9	111.4
H49	112.9	112.0	104.2	109.4	115.4	98.5	101.8	112.9	109.5	104.7	91.0	100.1	107.0
H50	117.5	135.3	130.2	135.8	153.3	151.0	129.5	134.9	116.6	133.2	108.8	105.4	130.9
H51	149.7	209.2	281.8	326.8	424.3	373.6	350.6	301.8	131.9	212.9	142.0	146.8	224.0
H52	110.5	111.1	103.4	105.1	116.6	106.8	104.3	108.0	100.9	104.9	100.9	124.5	107.7
H53	121.3	129.2	113.6	120.8	127.4	119.1	118.7	134.4	146.7	136.3	121.2	117.6	114.1
I	127.3	126.6	136.3	161.3	202.4	222.1	158.1	121.4	109.5	124.9	117.6	121.4	123.7
I55	146.5	148.1	159.5	220.4	302.2	341.3	219.5	132.0	114.2	136.3	132.0	154.8	139.2
I56	116.0	114.0	122.7	126.9	144.1	152.5	122.3	115.1	106.7	118.2	109.2	102.5	115.6
J	117.4	109.9	112.9	120.0	117.4	113.4	121.3	122.0	119.7	150.8	114.5	108.3	119.8
J58	73.3	77.2	82.4	93.7	135.1	149.8	105.7	89.0	91.0	96.4	85.8	68.9	71.5
J59	100.6	80.6	71.7	123.0	98.8	70.1	93.1	123.4	122.8	153.7	83.0	69.6	88.4
J60	74.8	99.6	87.4	79.0	64.5	60.1	75.0	95.8	100.5	82.5	60.1	70.6	58.0
J61	116.0	112.4	120.8	124.8	124.2	123.5	130.2	126.3	123.8	134.4	108.6	111.2	114.6
J62	126.1	111.4	113.2	122.5	115.6	111.1	121.2	123.6	120.2	168.8	121.2	108.2	130.3
J63	110.3	119.1	114.5	107.3	116.4	102.0	116.4	115.1	115.6	158.7	144.1	143.7	133.4
L	91.3	94.8	87.7	109.3	96.8	97.7	111.2	91.4	85.5	123.4	95.8	108.4	105.7
M_STS	114.7	110.6	108.7	125.4	126.4	126.0	122.3	122.8	129.4	168.8	103.8	106.0	122.7
M69	114.6	118.5	129.0	125.8	127.7	122.7	122.6	123.9	114.3	142.7	120.7	116.8	138.9
M702	105.5	108.6	101.7	155.1	179.0	197.9	195.9	145.4	167.4	187.1	106.1	104.4	103.9
M71	121.7	102.9	100.3	107.7	108.7	109.8	97.5	109.6	127.5	199.2	103.5	104.6	127.7
M73	116.9	129.3	115.2	128.9	111.3	98.8	105.0	134.8	134.7	168.4	83.5	91.4	109.4
M74	112.7	98.8	97.4	118.6	113.1	108.3	102.3	109.0	111.9	145.1	98.7	107.9	124.7
N	110.5	109.6	114.5	128.1	126.7	127.0	126.1	111.7	121.1	118.4	106.3	112.8	120.6
N77	123.0	130.9	124.2	130.0	141.2	121.5	121.6	113.1	115.3	123.3	97.6	103.5	108.2
N78	116.0	101.7	123.1	120.5	110.4	111.2	114.4	117.6	119.1	155.4	121.0	136.0	137.5
N79	126.4	139.4	162.0	301.7	326.0	370.5	323.1	167.3	95.8	123.0	120.1	125.8	139.8
N80	98.6	99.7	101.7	98.9	98.9	105.6	103.9	98.9	99.6	107.6	106.9	111.8	100.2
N81	110.2	112.7	106.6	116.5	109.9	103.4	102.9	106.0	112.7	116.3	95.9	100.4	101.8
N82	109.0	101.7	106.5	119.1	105.8	100.2	111.7	108.3	167.5	104.8	101.7	106.2	147.5

* Preliminary data.