

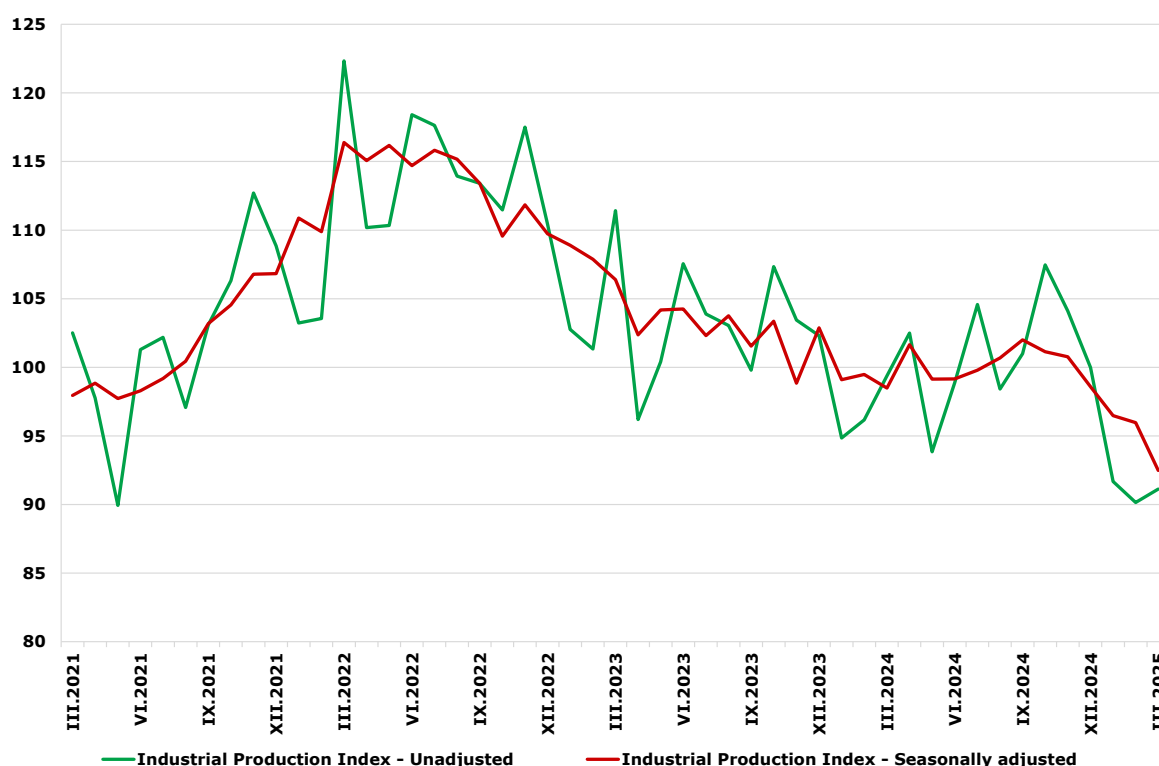


INDUSTRIAL PRODUCTION INDICES IN MARCH 2025

The Industrial Production Index decreased by 3.6% in March 2025 compared to the previous month. The data are preliminary and seasonally adjusted.

In comparison with March 2024, a decrease of 8.3% was registered in the calendar-adjusted Industrial Production Index.

Figure 1. Industrial Production Indices (2021 = 100)



Monthly changes

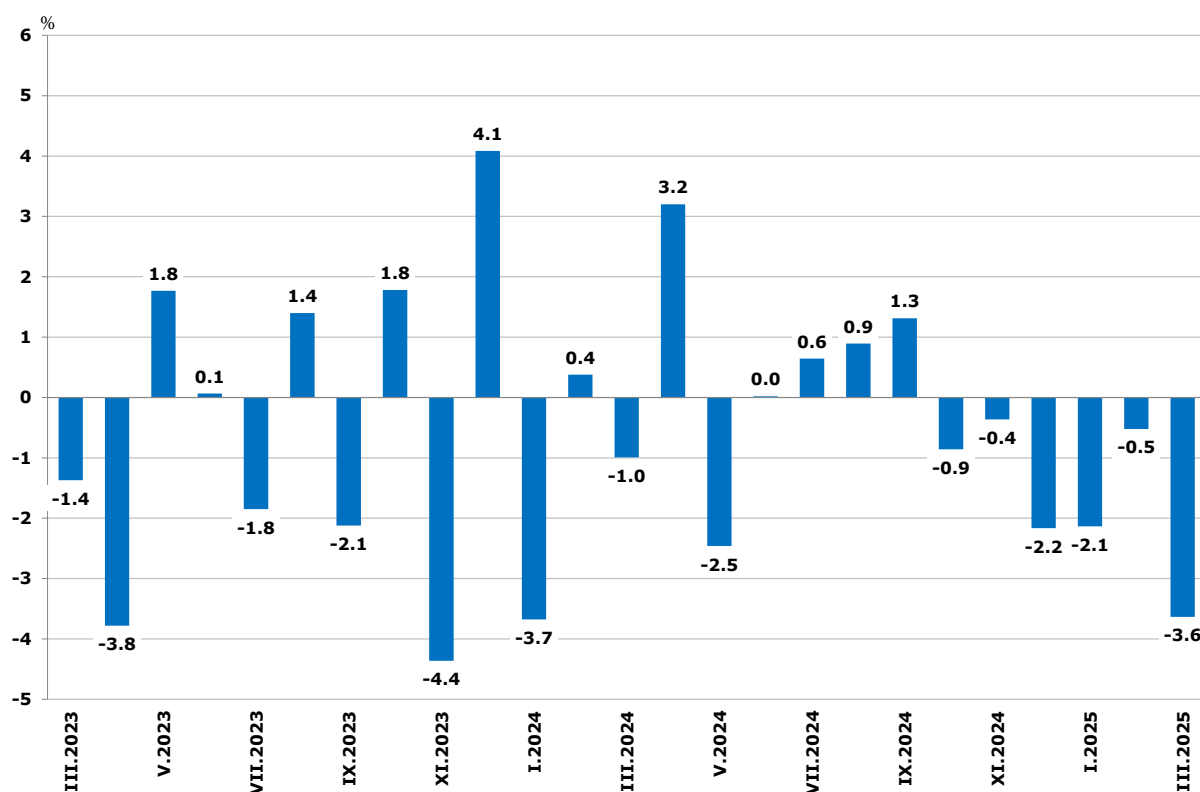
In March 2025, compared to the previous month, a decrease was seen in the electricity, gas, steam and air conditioning supply - by 39.8%, while a rise was registered in the mining and quarrying industry - by 6.0%, and in the manufacturing - by 0.8%.

In the manufacturing an increase was reported in the manufacture of fabricated metal products, except machinery and equipment - by 16.9%, in the manufacture of computer, electronic and optical products - by 15.0%, and in the manufacture of basic metals - by 13.1%.

More significant decline in the manufacturing was reported in manufacture of other transport equipment - by 31.8%, and in the other manufacturing - by 15.1%.

INDUSTRIAL PRODUCTION INDICES IN MARCH 2025

**Figure 2. Changes of Industrial Production
Indices compared to the previous month
(Seasonally adjusted)**



Annual changes

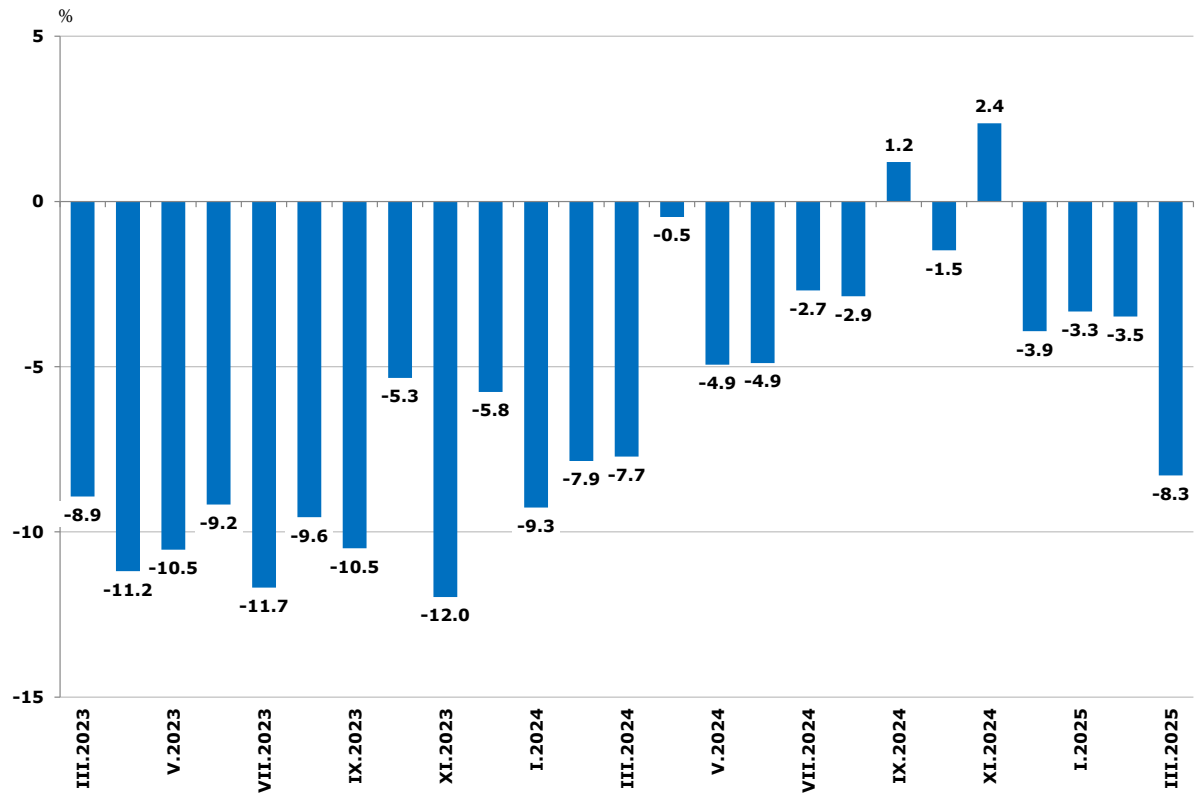
On an annual basis, a decrease of the Industrial Production Index was observed in the electricity, gas, steam and air conditioning supply - by 29.7%, in the manufacturing - by 3.3%, while a rise was registered in the mining and quarrying industry - by 2.9%.

In the manufacturing, a significant decline in production, compared to the same month of the previous year, was seen in the manufacture of basic metals - by 24.9%, and in the manufacture of other transport equipment - by 24.0%.

A rise was reported in the manufacture of fabricated metal products, except machinery and equipment - by 30.0%, and in the manufacture of computer, electronic and optical products - by 27.2%.

INDUSTRIAL PRODUCTION INDICES IN MARCH 2025

Figure 3. Changes of the Industrial Production Indices compared to the same month of the previous year (Calendar-adjusted)



INDUSTRIAL PRODUCTION INDICES IN MARCH 2025

Methodological notes

The monthly indices of industrial production are calculated in accordance with the requirements of Regulation (EU) 2019/2152 of the European Parliament and of the Council on European Business Statistics.

The Monthly Industrial Production and Industrial Turnover Indices measure changes in production and turnover values of industrial enterprises. This information can be used to access the current economic development and for short-term forecasts. Indices do not measure the actual production level; they aim to measure the average change in the value of production between two points in time. Indices are compiled based on information collected through a representative sampling survey on industrial enterprises. The sample covers enterprises with an annual turnover of more than 97% of the total turnover in the industry.

The Industrial Production Indices are calculated at a constant base year, that is to say they are weighted with the structure of the value added at factor costs in the base year.

Seasonal adjustment is a statistical method which eliminates the seasonal component of the time series.

Calendar adjustment is an adjustment for variations in the monthly data, caused by calendar effects, the different number of calendar and working days in the months, national holidays and outliers (for example, the presence of more non-working days in May could contribute to the decline in production in some activities).

Since July 2024, all dynamic rows have been recalculated based on 2021 as base year and have been published in IS Infostat.

INDUSTRIAL PRODUCTION INDICES

IN MARCH 2025

Annex

Table 1

Changes of Industrial Production Indices compared to the previous month¹

(Per cent)

Economic activities	NACE.BG - 2008	2024			2025		
		X	XI	XII	I	II	III*
Industry	B_TO_E36	-0.9	-0.4	-2.2	-2.1	-0.5	-3.6
Mining and quarrying	B	-23.3	1.5	20.9	-19.3	-6.2	6.0
Mining of coal and lignite	B05	-54.7	186.3	63.9	-56.3	8.7	-37.2
Extraction of crude petroleum and natural gas	B06
Mining of metal ores	B07	-8.9	-2.9	5.8	-9.9	-2.6	3.2
Other mining and quarrying	B08	3.6	2.0	-8.4	8.3	-21.5	9.5
Mining support service activities	B09
Manufacturing	C	1.5	-0.1	-2.1	-1.8	-1.4	0.8
Manufacture of food products	C10	4.6	-6.7	-1.1	-3.9	-7.4	-1.9
Manufacture of beverages	C11	-5.7	-3.3	3.2	-0.5	-2.2	-4.5
Manufacture of tobacco products	C12	-3.4	-15.1	14.3	14.4	6.7	-0.9
Manufacture of textiles	C13	-15.7	-7.7	-0.4	-6.5	2.6	-4.6
Manufacture of wearing apparel	C14	2.4	3.2	-16.1	0.6	-1.0	-3.8
Manufacture of leather and related products	C15	13.2	-0.5	-7.3	2.2	-4.2	-0.5
Manufacture of wood and of products of wood and cork, except furniture; manufacture of articles of straw and plaiting materials	C16	-5.1	4.3	0.5	-2.2	-3.6	-2.1
Manufacture of paper and paper products	C17	-4.3	-2.3	-10.5	-9.8	3.2	-2.4
Printing and reproduction of recorded media	C18	-2.6	2.6	-3.3	-0.5	-3.2	6.5
Manufacture of coke and refined petroleum products	C19
Manufacture of chemicals and chemical products	C20	-4.6	11.1	-7.2	-4.4	-3.5	0.2
Manufacture of basic pharmaceutical products and pharmaceutical preparations	C21	11.4	-7.2	7.6	-2.9	-8.8	7.4
Manufacture of rubber and plastic products	C22	-3.7	5.7	-1.2	-4.5	-0.9	2.2
Manufacture of other non-metallic mineral products	C23	5.2	5.2	17.3	1.3	-12.8	5.2
Manufacture of basic metals	C24	-5.5	-4.3	-20.7	0.8	3.2	13.1
Manufacture of fabricated metal products, except machinery and equipment	C25	14.3	-7.4	-2.9	14.6	-16.8	16.9
Manufacture of computer, electronic and optical products	C26	-2.8	6.5	-2.6	-15.3	17.0	15.0
Manufacture of electrical equipment	C27	4.6	1.3	-7.8	2.0	-2.5	1.2
Manufacture of machinery and equipment n.e.c.	C28	1.0	-6.6	4.0	0.3	5.2	2.1
Manufacture of motor vehicles, trailers and semi-trailers	C29	-7.1	4.4	-6.1	17.9	-1.1	3.7
Manufacture of other transport equipment	C30	12.3	-12.4	6.3	-1.3	18.6	-31.8
Manufacture of furniture	C31	2.4	-2.2	1.7	-0.8	12.4	8.6
Other manufacturing	C32	30.5	-6.4	9.6	-17.0	20.0	-15.1
Repair and installation of machinery and equipment	C33	9.9	-19.8	6.0	11.9	-15.2	-3.5
Electricity, gas, steam and air conditioning supply	D	-5.4	-8.0	-19.1	20.6	10.7	-39.8
Electricity, gas, steam and air conditioning supply	D35	-5.4	-8.0	-19.1	20.6	10.7	-39.8

¹ Seasonally adjusted.

* Preliminary data.

„..“ - Confidential data.

INDUSTRIAL PRODUCTION INDICES

IN MARCH 2025

Table 2

Changes of Industrial Production Indices compared to the same month of the previous year²

(Per cent)

Economic activities	NACE.BG - 2008	2024			2025		
		X	XI	XII	I	II	III*
Industry	B_TO_E36	-1.5	2.4	-3.9	-3.3	-3.5	-8.3
Mining and quarrying	B	-9.9	-5.0	8.0	-4.5	-1.6	2.9
Mining of coal and lignite	B05	-53.5	-4.7	26.9	-18.7	22.4	-52.0
Extraction of crude petroleum and natural gas	B06
Mining of metal ores	B07	-5.7	-16.3	-4.1	-16.8	-14.8	-2.1
Other mining and quarrying	B08	-15.7	-0.1	-13.7	-1.5	-38.3	-25.0
Mining support service activities	B09
Manufacturing	C	0.2	3.2	-1.2	-0.3	-5.6	-3.3
Manufacture of food products	C10	3.3	-2.5	-3.5	-10.6	-16.7	-17.9
Manufacture of beverages	C11	-3.4	-12.6	-3.5	-7.7	-10.4	-10.0
Manufacture of tobacco products	C12	35.4	3.5	17.6	61.0	44.5	20.3
Manufacture of textiles	C13	-5.6	-22.4	-14.6	-17.7	-19.3	-18.2
Manufacture of wearing apparel	C14	-10.7	-2.1	-23.0	-17.5	-16.2	-17.9
Manufacture of leather and related products	C15	-7.6	-18.8	-21.8	-3.3	-13.7	-6.0
Manufacture of wood and of products of wood and cork, except furniture; manufacture of articles of straw and plaiting materials	C16	-2.5	4.1	9.4	-6.9	-15.4	-12.6
Manufacture of paper and paper products	C17	-1.0	-4.0	-10.6	-21.6	-19.5	-17.5
Printing and reproduction of recorded media	C18	2.5	3.5	-14.9	-6.9	-8.2	-0.8
Manufacture of coke and refined petroleum products	C19
Manufacture of chemicals and chemical products	C20	-11.6	20.1	5.6	-0.1	-6.0	-5.6
Manufacture of basic pharmaceutical products and pharmaceutical preparations	C21	7.7	1.4	29.5	4.2	-17.3	-9.8
Manufacture of rubber and plastic products	C22	-5.4	0.3	-0.3	0.3	-0.1	0.0
Manufacture of other non-metallic mineral products	C23	4.1	13.0	11.8	32.0	-2.2	11.3
Manufacture of basic metals	C24	-13.9	-14.7	-36.2	-34.1	-36.0	-24.9
Manufacture of fabricated metal products, except machinery and equipment	C25	23.7	23.9	23.9	27.4	5.6	30.0
Manufacture of computer, electronic and optical products	C26	6.4	17.4	17.8	-15.7	-14.3	27.2
Manufacture of electrical equipment	C27	3.3	8.4	-8.5	1.2	-11.7	-5.2
Manufacture of machinery and equipment n.e.c.	C28	3.2	-4.2	-4.3	8.2	6.7	11.1
Manufacture of motor vehicles, trailers and semi-trailers	C29	-29.0	-13.4	-14.6	-9.1	-6.5	5.4
Manufacture of other transport equipment	C30	9.8	4.0	1.6	33.3	54.6	-24.0
Manufacture of furniture	C31	13.3	5.0	-6.7	-2.8	11.8	18.9
Other manufacturing	C32	-10.1	-3.7	-4.2	-20.7	8.5	-6.6
Repair and installation of machinery and equipment	C33	8.8	-8.5	-9.0	9.4	-3.9	-0.7
Electricity, gas, steam and air conditioning supply	D	7.3	11.7	-28.8	-13.6	11.2	-29.7
Electricity, gas, steam and air conditioning supply	D35	7.3	11.7	-28.8	-13.6	11.2	-29.7

² Calendar-adjusted.

* Preliminary data.

„..“ - Confidential data.

INDUSTRIAL PRODUCTION INDICES

IN MARCH 2025

Table 3

Industrial Production Indices (Seasonally adjusted, 2021 = 100)

NACE.BG - 2008	2024										2025		
	III	IV	V	VI	VII	VIII	IX	X	XI	XII	I	II	III*
B_TO_E36	98.5	101.6	99.1	99.2	99.8	100.7	102.0	101.1	100.8	98.6	96.5	96.0	92.5
B	81.8	84.8	76.0	77.2	83.8	102.4	112.0	85.9	87.2	105.4	85.1	79.8	84.6
B05	47.1	47.0	38.7	46.7	58.8	48.4	42.6	19.3	55.2	90.5	39.5	43.0	27.0
B06
B07	101.9	106.4	101.2	100.0	99.6	111.2	118.3	107.8	104.7	110.8	99.9	97.3	100.4
B08	97.3	99.0	89.5	87.6	88.6	87.8	81.6	84.6	86.3	79.0	85.6	67.2	73.6
B09
C	105.2	105.9	103.0	105.6	104.9	106.9	105.9	107.5	107.4	105.2	103.3	101.8	102.6
C10	103.6	105.8	98.3	103.0	103.6	103.7	103.1	107.9	100.6	99.5	95.6	88.6	86.9
C11	103.4	112.8	102.4	106.9	106.0	105.4	109.2	102.9	99.5	102.7	102.1	99.9	95.4
C12	79.0	79.2	70.5	59.9	69.6	78.7	80.6	77.9	66.2	75.6	86.5	92.3	91.5
C13	61.8	62.1	63.9	66.1	62.5	58.0	72.3	61.0	56.3	56.1	52.4	53.8	51.3
C14	88.7	87.8	88.9	91.6	90.2	88.4	87.8	90.0	92.8	77.9	78.4	77.6	74.7
C15	63.7	67.5	66.1	62.7	61.9	62.7	59.3	67.2	66.8	61.9	63.3	60.6	60.3
C16	96.5	91.1	88.7	88.7	87.6	86.2	92.4	87.7	91.5	92.0	89.9	86.7	84.9
C17	89.3	95.7	93.4	94.2	99.9	91.5	97.6	93.4	91.3	81.7	73.7	76.1	74.3
C18	94.8	95.9	93.5	98.6	91.4	87.8	94.6	92.1	94.5	91.4	90.9	88.1	93.8
C19
C20	99.1	107.6	108.5	117.1	100.8	109.7	103.7	98.9	109.9	101.9	97.4	94.0	94.1
C21	126.3	116.1	117.7	115.2	114.3	125.7	108.6	121.0	112.2	120.8	117.3	107.0	114.9
C22	81.9	85.2	82.5	84.4	84.1	83.8	84.8	81.6	86.3	85.3	81.5	80.7	82.5
C23	94.3	97.6	86.1	90.0	94.5	85.8	86.5	91.0	95.7	112.3	113.7	99.1	104.3
C24	114.6	118.8	118.1	122.0	100.3	92.9	100.1	94.6	90.5	71.7	72.3	74.6	84.3
C25	143.7	153.6	145.8	145.2	164.3	175.0	162.1	185.4	171.7	166.8	191.1	159.0	185.9
C26	99.7	99.2	94.7	102.2	105.1	101.6	107.8	104.8	111.6	108.7	92.1	107.7	123.9
C27	101.3	92.2	91.3	96.8	98.8	103.0	98.9	103.5	104.8	96.6	98.5	96.1	97.3
C28	90.7	88.0	85.3	85.4	83.9	92.6	95.0	95.9	89.6	93.1	93.4	98.2	100.3
C29	112.1	126.8	114.8	106.7	116.9	116.5	105.5	98.0	102.3	96.0	113.2	111.9	116.1
C30	100.8	99.4	98.2	94.4	87.5	133.1	100.9	113.3	99.2	105.5	104.1	123.5	84.3
C31	84.3	79.7	80.0	76.1	75.3	81.5	79.4	81.3	79.5	80.8	80.2	90.1	97.9
C32	119.8	119.0	116.8	120.2	116.8	109.7	99.7	130.1	121.8	133.5	110.7	132.9	112.8
C33	103.8	126.2	114.8	113.7	110.6	110.8	121.9	133.9	107.4	113.8	127.4	108.0	104.2
D	75.5	85.6	90.7	69.2	86.2	71.5	89.2	84.4	77.6	62.8	75.8	83.9	50.5
D35	75.5	85.6	90.7	69.2	86.2	71.5	89.2	84.4	77.6	62.8	75.8	83.9	50.5

* Preliminary data.

„..“ - Confidential data.

INDUSTRIAL PRODUCTION INDICES

IN MARCH 2025

Table 4

Industrial Production Indices (Calendar-adjusted, 2021 = 100)

NACE.BG - 2008	2024										2025		
	III	IV	V	VI	VII	VIII	IX	X	XI	XII	I	II	III*
B_TO_E36	101.8	98.8	94.8	101.3	103.1	98.6	102.7	106.0	104.9	101.7	90.8	90.7	93.4
B	79.7	78.3	70.8	74.1	80.8	101.3	119.5	95.8	92.5	119.3	82.6	75.1	82.0
B05	40.2	25.9	17.5	24.2	51.3	44.0	48.8	40.9	71.6	112.5	55.1	45.4	19.3
B06
B07	97.6	109.8	96.7	97.2	87.6	115.5	137.9	109.8	96.3	124.1	92.4	84.8	95.5
B08	93.8	96.7	92.4	93.7	92.4	90.9	86.0	95.7	96.1	78.6	62.8	52.7	70.3
B09
C	108.5	105.7	102.0	111.4	108.7	103.6	107.0	115.6	111.3	102.6	93.4	93.1	104.9
C10	104.5	102.6	97.2	103.9	103.2	104.8	106.7	119.7	103.4	103.0	87.3	77.0	85.8
C11	96.5	109.8	103.9	127.7	131.0	129.8	120.3	95.7	90.4	95.0	74.6	72.5	86.8
C12	80.0	85.4	80.9	72.5	87.8	84.7	90.1	82.5	64.3	73.8	52.9	63.4	96.2
C13	66.0	60.5	67.4	71.4	63.0	47.3	73.6	64.6	59.2	51.5	47.5	54.1	54.0
C14	89.7	79.1	81.9	98.0	102.0	82.5	87.0	92.4	95.5	73.8	80.9	77.3	73.6
C15	68.5	64.4	62.0	66.9	68.0	50.8	58.2	74.7	77.4	56.9	62.6	58.5	64.4
C16	98.0	91.7	92.8	93.3	93.6	83.5	95.4	93.9	97.6	86.3	76.1	77.4	85.7
C17	93.1	93.2	93.4	97.9	103.2	85.9	96.7	99.8	95.7	75.1	69.2	70.9	76.7
C18	96.6	94.2	93.4	101.9	90.8	81.1	91.3	98.9	107.0	96.9	81.8	79.5	95.8
C19
C20	108.6	109.4	107.6	120.8	101.5	104.6	102.3	99.4	112.4	100.9	91.7	89.2	102.4
C21	139.0	115.8	115.8	123.5	111.2	114.6	100.4	129.4	112.0	127.1	114.0	96.2	125.4
C22	85.9	84.4	82.7	88.7	87.9	79.0	87.6	89.9	88.0	77.4	74.7	75.5	85.9
C23	93.3	99.9	91.0	95.3	102.8	89.8	91.9	101.3	101.8	103.3	84.9	83.3	103.8
C24	122.7	119.3	119.5	123.3	97.3	83.1	95.6	97.8	92.8	65.1	70.9	71.9	92.1
C25	144.3	156.8	142.0	152.8	176.9	173.4	162.4	196.3	189.1	173.3	153.8	139.7	187.6
C26	102.6	97.8	92.2	107.3	109.0	89.8	108.5	117.4	116.6	104.3	85.5	104.7	130.5
C27	107.4	89.6	85.7	104.9	103.2	96.1	101.2	110.3	112.3	86.6	91.6	95.9	101.8
C28	96.3	90.0	84.2	90.9	87.4	81.5	96.7	104.7	94.1	89.5	83.7	95.5	107.0
C29	119.2	125.0	110.8	108.4	107.9	103.6	107.9	105.7	114.2	84.9	115.7	114.9	125.6
C30	113.2	104.1	99.7	104.3	89.0	130.0	97.0	123.5	97.1	89.7	81.5	124.3	86.0
C31	87.2	78.2	79.0	81.2	77.9	77.7	80.4	88.0	84.5	81.6	70.2	83.9	103.7
C32	121.2	115.3	114.4	137.5	117.7	110.0	103.7	144.1	130.0	122.4	95.2	117.3	113.3
C33	104.3	114.9	108.9	116.9	112.0	107.8	128.1	141.5	117.3	150.2	94.3	92.0	103.5
D	81.5	72.0	70.0	64.1	91.9	76.2	77.3	73.8	86.8	81.8	87.2	90.7	57.3
D35	81.5	72.0	70.0	64.1	91.9	76.2	77.3	73.8	86.8	81.8	87.2	90.7	57.3

* Preliminary data.

„..“ - Confidential data.