

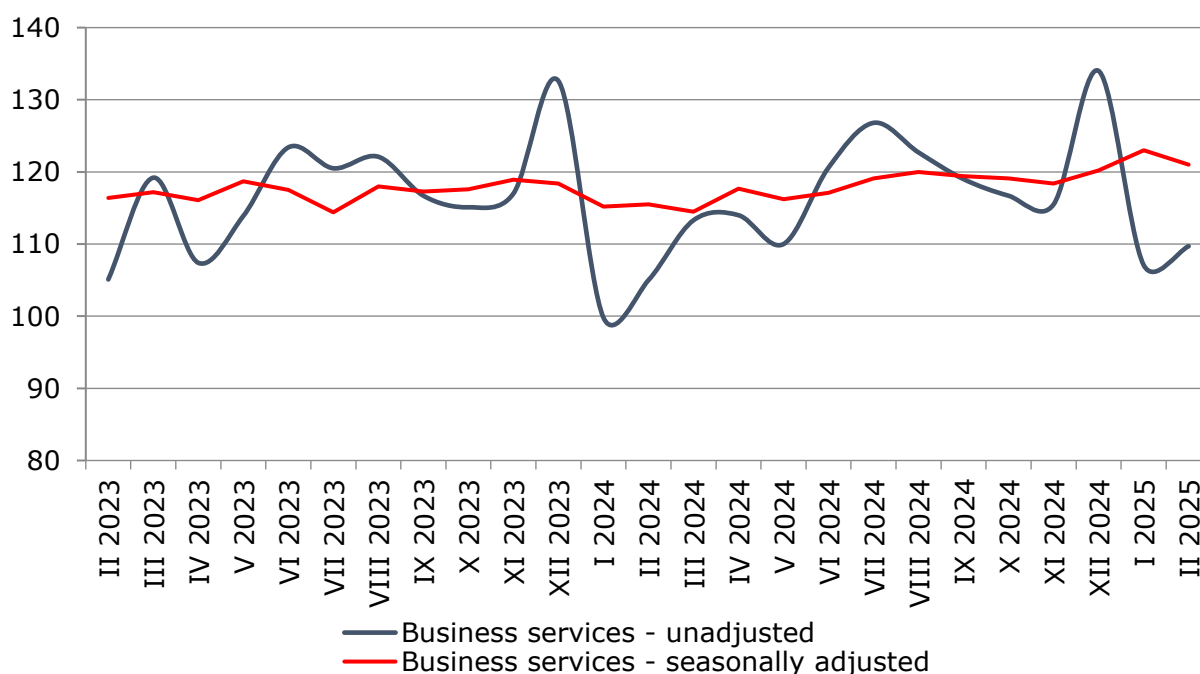


SERVICES PRODUCTION INDICES IN FEBRUARY 2025

In February 2025, the total production index in **Services of the business economy**¹ decreased by 1.6% compared to the previous month. The data are preliminary and seasonally adjusted.

Compared to February 2024, an increase of 5.6% was registered in the calendar-adjusted index according to preliminary data.

Figure 1. Production indices for Business services (2021 = 100)

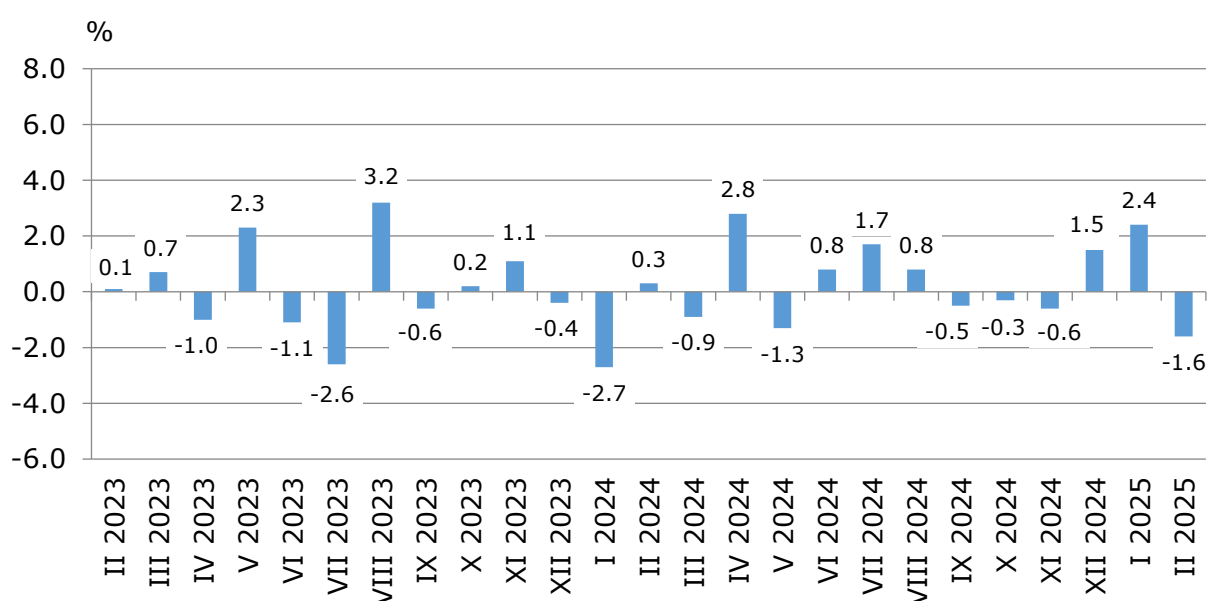


¹ Business services include the following sectors from NACE.BG - 2008: H - Transportation and storage, I - Accommodation and food service activities, J - Information and communication, L - Real estate activities, M_STG - Professional, scientific and technical activities (specific grouping under Regulation (EU) 2019/2152), and N - Administrative and support service activities.

Monthly changes

A decrease, compared to the previous month, was reported in the following sectors: 'Professional, scientific and technical activities' - by 5.8%, 'Information and communication' - by 5.2%, and 'Administrative and support service activities' - by 0.6%. An increase was seen in the following sectors: 'Real estate activities' - by 7.0%, 'Transportation and storage' - by 1.3%, and 'Accommodation and food service activities' - by 0.1%.

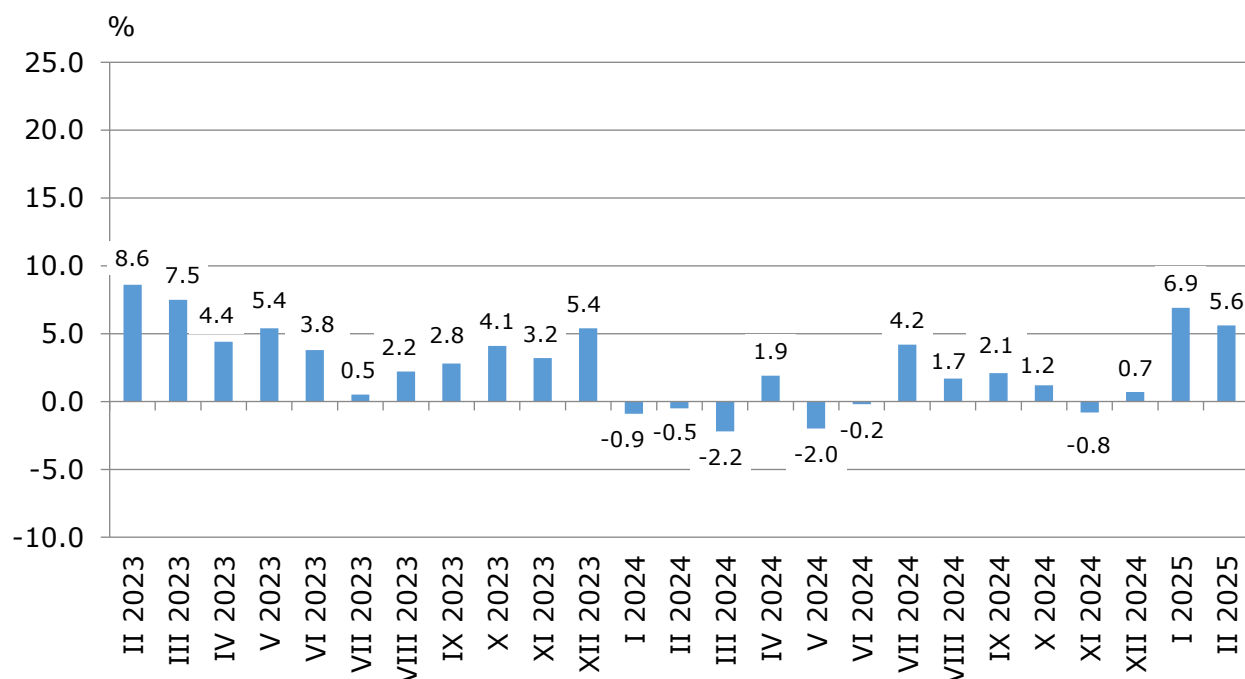
**Figure 2. Changes of production indices for Business services
compared to the previous month
(Seasonally adjusted data)**



Annual changes

On an annual basis, a rise was observed in all sectors: 'Real estate activities' - by 18.1%, 'Transportation and storage' - by 7.7%, 'Administrative and support service activities' - by 7.4%, 'Information and communication' - by 3.5%, 'Professional, scientific and technical activities' - by 2.6%, and 'Accommodation and food service activities' - by 1.1%.

**Figure 3. Changes of production indices for Business services
compared to the same month of the previous year
(Calendar-adjusted data)**



Methodological notes

Monthly indices of production in services are calculated and published two months after the reference period (M+2) in accordance with the requirements of Regulation (EU) 2019/2152 of the European Parliament and of the Council for European Business Statistics.

Production indices in services are calculated by deflating the turnover indices for each activity with the corresponding producer price indices. The purpose of the production index is to measure changes in output volume at monthly intervals. The indices are calculated with 2021 as a base year.

Seasonal adjustment is a statistical method, which eliminates the seasonal component of time series.

Calendar adjustment is an adjustment for variations caused by calendar effects, a different number of calendar and working days in the months, national holidays and outliers (for example, the presence of more non-working days in May could contribute to the decline in some activities).

Since July 2024, all dynamic rows have been recalculated based on the 2021 base year and have been published in IS Infostat.

SERVICES PRODUCTION INDICES IN FEBRUARY 2025

Annex

Table 1

Changes of production indices in services¹ (Compared to the previous month)

(Per cent)

Economic activities	NACE.BG - 2008	2024				2025	
		IX	X	XI	XII	I	II*
Services of the business economy (except trade and financial and insurance activities)	HTNXK	-0.5	-0.3	-0.6	1.5	2.4	-1.6
Transportation and storage	H	0.4	3.7	-3.6	4.5	0.1	1.3
Land transport and transport via pipelines	H49	-0.1	2.5	-2.0	2.9	-0.5	-1.3
Water transport	H50	-8.1	0.1	2.2	7.2	4.0	-9.0
Air transport	H51	11.9	20.5	-22.3	30.4	-17.3	2.7
Warehousing and support activities for transportation	H52	-0.5	1.5	-2.5	4.9	6.1	7.5
Postal and courier activities	H53	-0.9	5.4	-0.2	-6.5	0.7	-2.6
Accommodation and food service activities	I	0.3	-0.2	0.5	-0.3	1.0	0.1
Accommodation	I55	-0.8	-3.9	-0.7	0.5	1.4	3.1
Food and beverage service activities	I56	0.8	3.0	1.5	-0.7	-1.9	-0.9
Information and communication	J	1.4	-1.3	-3.2	3.9	4.3	-5.2
Publishing activities	J58	-42.7	-1.3	4.6	-4.7	16.2	-10.8
Motion picture, video, television programme production; programming and broadcasting activities	J59	25.3	-2.6	0.3	-23.1	35.6	-21.7
Programming and broadcasting activities	J60	-3.0	-2.5	-5.5	7.1	9.0	-10.8
Telecommunications	J61	4.1	0.1	-1.8	-0.9	-5.6	4.7
Computer programming, consultancy and related activities	J62	1.7	-2.1	-1.6	4.8	6.7	-9.9
Information service activities	J63	6.7	-2.2	-23.1	41.3	20.0	-5.0
Real estate activities	L	6.8	-6.8	-7.9	14.9	0.5	7.0
Professional, scientific and technical activities (specific grouping under Regulation (EU) 2019/2152)	M_STS	-8.2	-0.4	3.9	-4.8	2.4	-5.8
Legal and accounting activities	M69	-5.3	-0.3	-7.7	-3.8	20.0	-5.5
Management consultancy activities	M702	-12.7	-14.9	17.8	-17.6	-11.5	-7.0
Architectural and engineering activities; technical testing and analysis	M71	-4.0	6.0	9.0	-4.8	12.5	-10.3
Advertising and market research	M73	-3.8	8.4	-5.5	10.5	-7.9	-6.4
Other professional, scientific and technical activities	M74	-13.6	5.0	4.3	-0.6	-6.4	2.7
Administrative and support service activities	N	0.7	-2.3	10.6	-6.6	5.9	-0.6
Rental and leasing activities	N77	0.9	-1.2	-3.7	-0.7	5.2	-1.8
Employment activities	N78	3.0	-0.3	2.8	13.2	1.4	2.2
Travel agency, tour operator reservation service and related activities	N79	-3.6	-4.4	1.9	1.3	3.8	-0.5
Security and investigation activities	N80	-1.4	-5.5	4.2	-0.4	17.6	-3.3
Services to buildings and landscape activities	N81	3.7	1.7	6.7	-1.8	1.3	-1.4
Office administrative, office support and other business support activities	N82	3.5	-0.8	41.6	-30.0	-1.7	2.5

¹ Seasonally adjusted data.

* Preliminary data.

Table 2

Changes of production indices in services¹
(Compared to the same month of the previous year)

(Per cent)

Economic activities	NACE.BG - 2008	2024				2025	
		IX	X	XI	XII	I	II*
Services of the business economy (except trade and financial and insurance activities)	HTNXK	2.1	1.2	-0.8	0.7	6.9	5.6
Transportation and storage	H	1.7	2.5	1.0	6.5	4.7	7.7
Land transport and transport via pipelines	H49	2.0	3.2	3.6	7.1	2.8	-2.5
Water transport	H50	-14.5	-23.9	-22.7	-22.8	19.9	0.6
Air transport	H51	8.4	25.2	9.2	59.8	19.7	18.2
Warehousing and support activities for transportation	H52	-2.5	-5.4	-8.0	-0.6	6.8	31.5
Postal and courier activities	H53	13.0	17.9	18.3	10.8	1.5	-0.4
Accommodation and food service activities	I	4.0	2.6	3.7	0.1	3.2	1.1
Accommodation	I55	16.3	9.6	5.6	0.9	-0.9	7.3
Food and beverage service activities	I56	-6.4	-1.6	2.5	-0.4	6.4	-3.9
Information and communication	J	4.0	3.4	-0.4	0.4	11.7	3.5
Publishing activities	J58	-14.5	-3.1	-13.3	-20.3	19.9	-3.1
Motion picture, video, television programme production; programming and broadcasting activities	J59	39.2	-8.7	41.0	-24.6	20.0	-17.9
Programming and broadcasting activities	J60	-14.1	-8.7	-17.5	-3.6	7.3	-21.1
Telecommunications	J61	11.9	12.8	7.4	6.6	-1.0	0.5
Computer programming, consultancy and related activities	J62	-1.1	-0.1	-0.4	-1.1	16.5	4.6
Information service activities	J63	8.5	-2.3	-27.4	9.8	38.5	27.3
Real estate activities	L	-4.5	-8.6	-29.0	-5.6	9.9	18.1
Professional, scientific and technical activities (specific grouping under Regulation (EU) 2019/2152)	M_STS	2.6	2.5	6.0	-1.9	7.1	2.6
Legal and accounting activities	M69	3.8	7.6	-7.9	-11.7	19.3	9.7
Management consultancy activities	M702	66.2	36.1	48.4	22.6	-11.7	-17.0
Architectural and engineering activities; technical testing and analysis	M71	-14.6	-1.0	17.6	-2.4	30.4	24.2
Advertising and market research	M73	-20.0	-12.0	-13.7	-6.0	-13.7	-14.0
Other professional, scientific and technical activities	M74	-13.8	-10.4	-6.0	-6.9	5.1	6.1
Administrative and support service activities	N	-0.1	-5.2	0.6	0.7	1.6	7.4
Rental and leasing activities	N77	12.9	-0.2	-10.8	-1.0	-30.5	-6.5
Employment activities	N78	-9.2	-9.5	-8.2	13.1	21.9	25.4
Travel agency, tour operator reservation service and related activities	N79	-0.3	-12.1	-14.0	-4.0	14.4	9.4
Security and investigation activities	N80	-1.3	-7.8	-8.3	-5.0	19.4	11.2
Services to buildings and landscape activities	N81	-11.9	-8.7	0.5	0.6	1.1	1.8
Office administrative, office support and other business support activities	N82	3.6	3.6	29.0	2.1	-3.9	2.3

¹ Calendar-adjusted data.

* Preliminary data.

SERVICES PRODUCTION INDICES IN FEBRUARY 2025

Table 3

Production indices in services - seasonally adjusted (2021 = 100)

NACE.BG - 2008	2024											2025	
	II	III	IV	V	VI	VII	VIII	IX	X	XI	XII	I	II*
HTNXK	115.5	114.5	117.7	116.2	117.1	119.1	120.0	119.4	119.1	118.4	120.2	123.0	121.0
H	111.3	111.3	117.2	110.8	109.7	113.0	109.5	109.9	114.0	109.9	114.9	115.0	116.5
H49	108.0	105.8	111.2	104.7	105.2	107.0	104.0	104.0	106.6	104.4	107.4	106.8	105.5
H50	128.0	119.3	132.4	121.0	131.4	128.0	136.1	125.0	125.1	127.9	137.1	142.5	129.7
H51	223.6	226.8	266.2	283.2	255.0	250.9	229.1	256.4	309.1	240.3	313.3	259.1	266.1
H52	103.9	109.2	111.3	103.8	100.9	107.0	103.6	103.1	104.7	102.1	107.1	113.6	122.2
H53	120.7	116.7	128.9	118.1	120.2	130.2	127.3	126.2	133.1	132.8	124.2	125.1	121.8
I	143.6	143.8	144.6	142.9	143.7	144.4	143.6	144.0	143.7	144.4	144.0	145.4	145.6
I55	177.9	179.6	182.3	182.0	188.6	190.7	188.6	187.2	179.9	178.6	179.4	182.0	187.6
I56	122.9	122.0	122.1	120.7	119.7	117.9	117.8	118.8	122.3	124.2	123.2	120.9	119.9
J	114.9	113.9	115.8	117.5	115.9	119.7	120.3	122.0	120.4	116.6	121.1	126.3	119.8
J58	89.2	85.8	88.8	92.4	88.6	110.6	150.4	86.2	85.1	89.0	84.8	98.5	87.8
J59	104.8	101.9	92.2	83.1	123.6	109.6	87.4	109.5	106.7	107.0	82.2	111.5	87.3
J60	96.4	71.4	96.3	82.0	75.0	76.6	82.1	79.7	77.7	73.5	78.7	85.7	76.4
J61	120.1	118.8	118.0	121.4	120.9	122.2	120.7	125.6	125.7	123.4	122.4	115.5	120.9
J62	114.1	116.5	118.1	120.0	116.8	121.2	122.7	124.9	122.3	120.3	126.1	134.5	121.2
J63	119.0	106.9	120.2	121.0	110.6	122.6	115.6	123.3	120.6	92.7	130.9	157.1	149.2
L	95.3	92.7	101.4	95.5	105.3	94.9	97.0	103.5	96.5	88.9	102.2	102.7	109.9
M_STS	114.8	110.8	114.4	115.2	119.0	125.6	135.6	124.4	124.0	128.8	122.6	125.6	118.4
M69	118.1	108.6	113.6	130.0	117.7	124.9	136.5	129.3	128.9	119.0	114.4	137.3	129.7
M702	140.9	104.0	117.8	116.7	144.3	170.4	199.9	174.5	148.4	174.8	144.1	127.5	118.6
M71	97.1	116.4	111.4	111.1	105.2	109.7	113.9	109.4	116.0	126.4	120.3	135.4	121.4
M73	125.3	118.2	128.6	114.9	123.9	115.2	115.8	111.5	120.8	114.1	126.0	116.0	108.7
M74	102.6	106.4	105.3	102.9	112.2	115.4	120.8	104.4	109.6	114.3	113.6	106.3	109.1
N	115.6	116.9	113.3	116.3	117.9	114.9	115.2	116.0	113.3	125.3	117.0	123.9	123.1
N77	122.8	129.3	122.7	116.3	126.3	129.3	119.0	120.1	118.6	114.2	113.4	119.4	117.2
N78	112.0	116.4	97.7	124.6	121.1	111.1	112.9	116.3	115.9	119.1	134.9	136.8	139.7
N79	194.4	193.1	197.0	197.0	205.7	200.6	207.4	199.9	191.1	194.7	197.3	204.8	203.7
N80	102.7	101.0	100.9	103.2	98.8	97.6	103.4	101.9	96.3	100.4	99.9	117.5	113.6
N81	108.4	112.2	113.6	103.3	108.3	101.2	100.2	103.9	105.6	112.7	110.7	112.1	110.5
N82	107.2	107.1	106.1	107.5	110.9	107.4	105.6	109.3	108.4	153.4	107.4	105.6	108.3

* Preliminary data.

SERVICES PRODUCTION INDICES IN FEBRUARY 2025

Table 4

Production indices in services - calendar-adjusted (2021 = 100)

NACE.BG - 2008	2024											2025	
	II	III	IV	V	VI	VII	VIII	IX	X	XI	XII	I	II*
HTNXK	104.4	114.3	112.2	112.1	124.2	129.8	126.8	122.5	117.6	114.9	134.4	106.1	110.2
H	101.9	113.9	116.0	110.2	115.6	126.2	111.1	111.4	118.7	110.2	110.4	97.6	109.8
H49	102.8	112.9	112.0	104.2	109.4	115.4	98.5	101.8	112.9	109.5	104.7	91.0	100.3
H50	104.8	117.5	135.3	130.2	135.8	153.3	151.0	129.5	134.9	116.6	133.2	108.8	105.4
H51	124.2	149.7	209.2	281.8	326.8	424.3	373.6	350.6	301.8	131.9	212.9	142.0	146.8
H52	94.5	110.5	111.1	103.4	105.1	116.6	106.8	104.3	108.0	100.9	104.9	100.9	124.2
H53	116.5	121.3	129.2	113.6	120.8	127.4	119.1	118.7	134.4	146.7	136.3	121.2	116.0
I	120.1	127.3	126.6	136.3	161.3	202.4	222.1	158.1	121.4	109.5	124.9	117.6	121.4
I55	144.2	146.5	148.1	159.5	220.4	302.2	341.3	219.5	132.0	114.2	136.3	132.0	154.8
I56	106.0	116.0	114.0	122.7	126.9	144.1	152.5	122.3	115.1	106.7	118.2	109.2	101.9
J	104.7	117.4	109.9	112.9	120.0	117.4	113.4	121.3	122.0	119.7	150.8	114.5	108.4
J58	72.9	73.3	77.2	82.4	93.7	135.1	149.8	105.7	89.0	91.0	96.4	85.8	70.6
J59	84.8	100.6	80.6	71.7	123.0	98.8	70.1	93.1	123.4	122.8	153.7	83.0	69.6
J60	89.6	74.8	99.6	87.4	79.0	64.5	60.1	75.0	95.8	100.5	82.5	60.1	70.6
J61	110.7	116.0	112.4	120.8	124.8	124.2	123.5	130.2	126.3	123.8	134.4	108.6	111.2
J62	103.4	126.1	111.4	113.2	122.5	115.6	111.1	121.2	123.6	120.2	168.8	121.2	108.2
J63	113.8	110.3	119.1	114.5	107.3	116.4	102.0	116.4	115.1	115.6	158.7	144.1	144.9
L	91.7	91.3	94.8	87.7	109.3	96.8	97.7	111.2	91.4	85.5	123.4	95.8	108.3
M_STS	103.3	114.7	110.6	108.7	125.4	126.4	126.0	122.3	122.8	129.4	168.8	103.8	106.0
M69	108.7	114.6	118.5	129.0	125.8	127.7	122.7	122.6	123.9	114.3	142.7	120.7	119.2
M702	125.9	105.5	108.6	101.7	155.1	179.0	197.9	195.9	145.4	167.4	187.1	106.1	104.6
M71	84.2	121.7	102.9	100.3	107.7	108.7	109.8	97.5	109.6	127.5	199.2	103.5	104.6
M73	106.7	116.9	129.3	115.2	128.9	111.3	98.8	105.0	134.8	134.7	168.4	83.5	91.8
M74	98.9	112.7	98.8	97.4	118.6	113.1	108.3	102.3	109.0	111.9	145.1	98.7	105.0
N	105.0	110.5	109.6	114.5	128.1	126.7	127.0	126.1	111.7	121.1	118.4	106.3	112.8
N77	109.9	123.0	130.9	124.2	130.0	141.2	121.5	121.6	113.1	115.3	123.3	97.6	102.8
N78	108.1	116.0	101.7	123.1	120.5	110.4	111.2	114.4	117.6	119.1	155.4	121.0	135.6
N79	115.4	126.4	139.4	162.0	301.7	326.0	370.5	323.1	167.3	95.8	123.0	120.1	126.3
N80	101.0	98.6	99.7	101.7	98.9	98.9	105.6	103.9	98.9	99.6	107.6	106.9	112.3
N81	98.6	110.2	112.7	106.6	116.5	109.9	103.4	102.9	106.0	112.7	116.3	95.9	100.4
N82	104.0	109.0	101.7	106.5	119.1	105.8	100.2	111.7	108.3	167.5	104.8	101.7	106.4

* Preliminary data.