

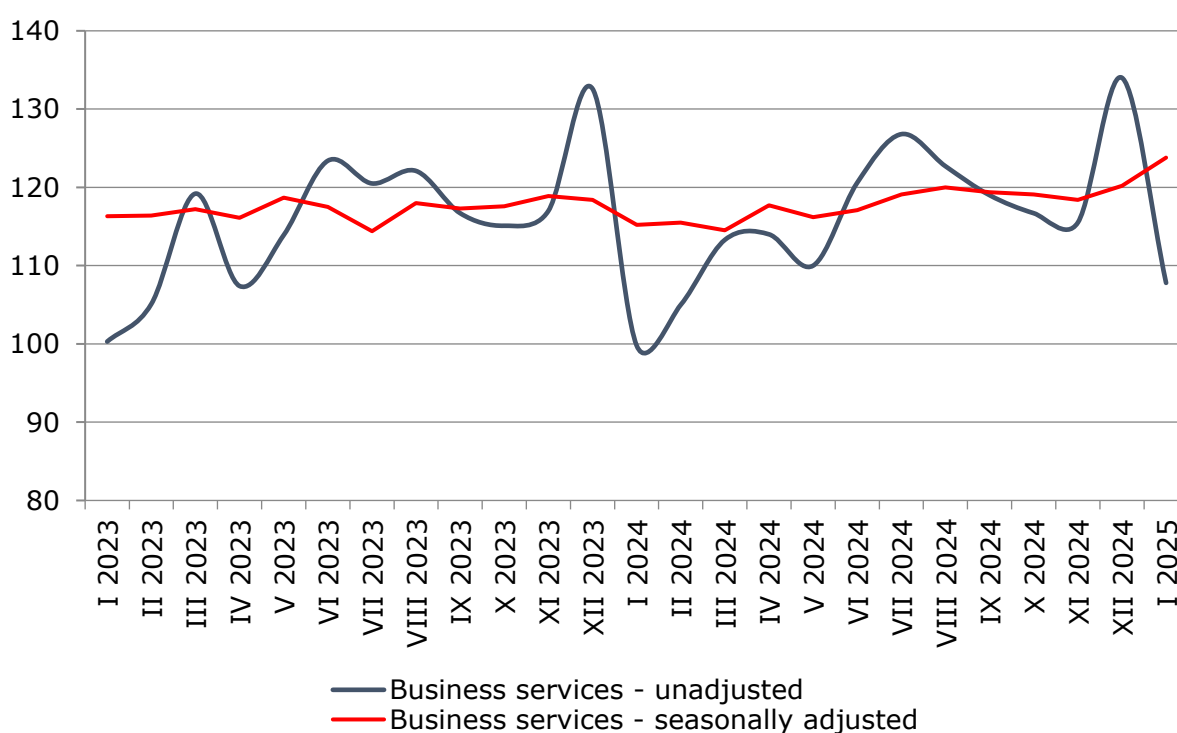


## SERVICES PRODUCTION INDICES IN JANUARY 2025

In January 2025, the total production index in **Services of the business economy**<sup>1</sup> increased by 3.0% compared to the previous month. The data are preliminary and seasonally adjusted.

Compared to January 2024, an increase of 7.6% was registered in the calendar-adjusted index according to preliminary data.

**Figure 1. Production indices for Business services (2021 = 100)**

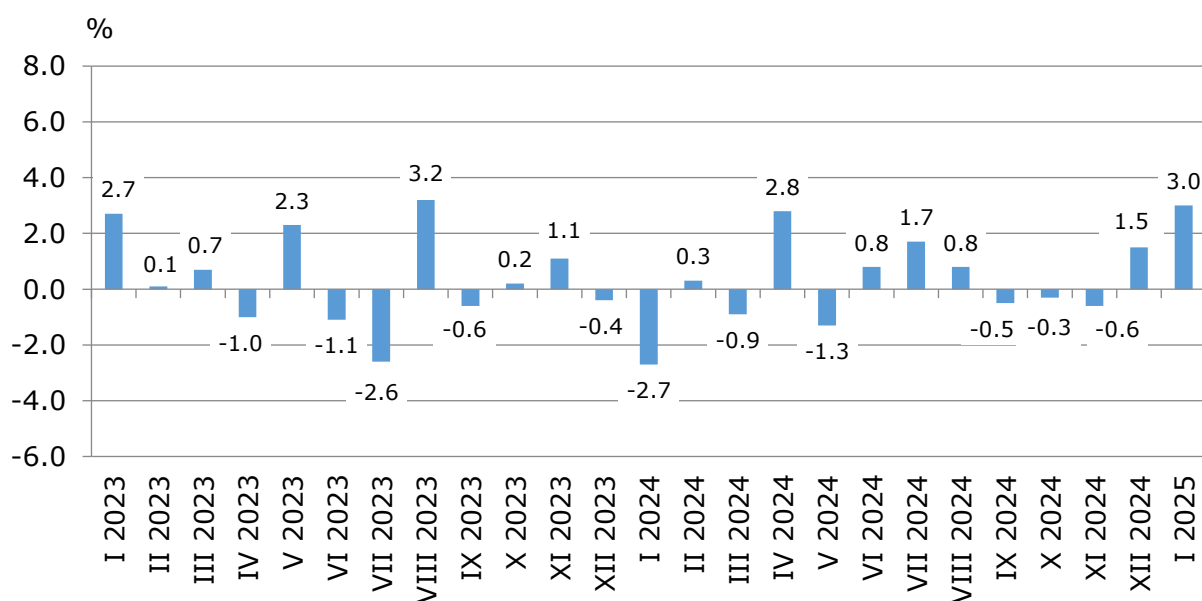


<sup>1</sup> Business services include the following sectors from NACE.BG - 2008: H - Transportation and storage, I - Accommodation and food service activities, J - Information and communication, L - Real estate activities, M\_STS - Professional, scientific and technical activities (specific grouping under Regulation (EU) 2019/2152), and N - Administrative and support service activities.

### Monthly changes

An increase, compared to the previous month, was reported in the following sectors: 'Professional, scientific and technical activities' - by 6.5%, 'Administrative and support service activities' - by 5.9%, 'Information and communication' - by 4.8%, and 'Accommodation and food service activities' - by 0.6%. A decline was seen in the following sectors: 'Real estate activities' - by 0.5%, and 'Transportation and storage' - by 0.3%.

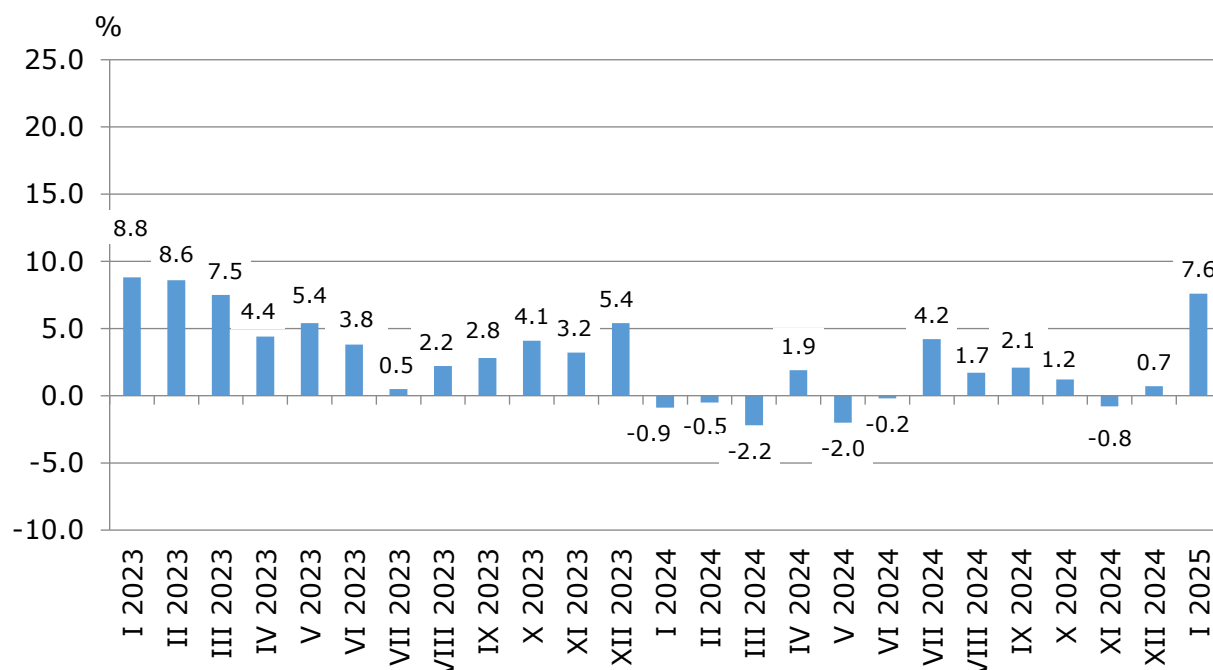
**Figure 2. Changes of production indices for Business services  
compared to the previous month  
(Seasonally adjusted data)**



### Annual changes

On an annual basis, a rise was observed in all sectors: 'Information and communication' - by 11.9%, 'Professional, scientific and technical activities' - by 11.5%, 'Real estate activities' - by 10.0%, 'Transportation and storage' - by 4.7%, 'Accommodation and food service activities' - by 2.7%, and 'Administrative and support service activities' - by 1.6%.

**Figure 3. Changes of production indices for Business services compared to the same month of the previous year (Calendar-adjusted data)**



### Methodological notes

Monthly indices of production in services are calculated and published two months after the reference period (M+2) in accordance with the requirements of Regulation (EU) 2019/2152 of the European Parliament and of the Council for European Business Statistics.

Production indices in services are calculated by deflating the turnover indices for each activity with the corresponding producer price indices. The purpose of the production index is to measure changes in output volume at monthly intervals. The indices are calculated with 2021 as a base year.

Seasonal adjustment is a statistical method, which eliminates the seasonal component of time series.

Calendar adjustment is an adjustment for variations caused by calendar effects, a different number of calendar and working days in the months, national holidays and outliers (for example, the presence of more non-working days in May could contribute to the decline in some activities).

Since July 2024, all dynamic rows have been recalculated based on the 2021 base year and have been published in IS Infostat.

# SERVICES PRODUCTION INDICES IN JANUARY 2025

## Annex

Table 1

### Changes of production indices in services<sup>1</sup> (Compared to the previous month)

(Per cent)

Economic activities	NACE.BG - 2008	2024					2025
		VIII	IX	X	XI	XII	I*
<b>Services of the business economy (except trade and financial and insurance activities)</b>	<b>HTNXK</b>	<b>0.8</b>	<b>-0.5</b>	<b>-0.3</b>	<b>-0.6</b>	<b>1.5</b>	<b>3.0</b>
<b>Transportation and storage</b>	<b>H</b>	<b>-3.1</b>	<b>0.4</b>	<b>3.7</b>	<b>-3.6</b>	<b>4.5</b>	<b>-0.3</b>
Land transport and transport via pipelines	H49	-2.8	-0.1	2.5	-2.0	2.9	-0.3
Water transport	H50	6.3	-8.1	0.1	2.2	7.2	4.2
Air transport	H51	-8.7	11.9	20.5	-22.3	30.4	-17.1
Warehousing and support activities for transportation	H52	-3.1	-0.5	1.5	-2.5	4.9	4.0
Postal and courier activities	H53	-2.2	-0.9	5.4	-0.2	-6.5	1.6
<b>Accommodation and food service activities</b>	<b>I</b>	<b>-0.6</b>	<b>0.3</b>	<b>-0.2</b>	<b>0.5</b>	<b>-0.3</b>	<b>0.6</b>
Accommodation	I55	-1.1	-0.8	-3.9	-0.7	0.5	-0.8
Food and beverage service activities	I56	-0.1	0.8	3.0	1.5	-0.7	1.9
<b>Information and communication</b>	<b>J</b>	<b>0.4</b>	<b>1.4</b>	<b>-1.3</b>	<b>-3.2</b>	<b>3.9</b>	<b>4.8</b>
Publishing activities	J58	36.0	-42.7	-1.3	4.6	-4.7	16.4
Motion picture, video, television programme production; programming and broadcasting activities	J59	-20.3	25.3	-2.6	0.3	-23.1	36.0
Programming and broadcasting activities	J60	7.3	-3.0	-2.5	-5.5	7.1	9.1
Telecommunications	J61	-1.3	4.1	0.1	-1.8	-0.9	-5.5
Computer programming, consultancy and related activities	J62	1.3	1.7	-2.1	-1.6	4.8	7.7
Information service activities	J63	-5.7	6.7	-2.2	-23.1	41.3	19.4
<b>Real estate activities</b>	<b>L</b>	<b>2.2</b>	<b>6.8</b>	<b>-6.8</b>	<b>-7.9</b>	<b>14.9</b>	<b>-0.5</b>
<b>Professional, scientific and technical activities (specific grouping under Regulation (EU) 2019/2152)</b>	<b>M_STS</b>	<b>7.9</b>	<b>-8.2</b>	<b>-0.4</b>	<b>3.9</b>	<b>-4.8</b>	<b>6.5</b>
Legal and accounting activities	M69	9.3	-5.3	-0.3	-7.7	-3.8	19.8
Management consultancy activities	M702	17.3	-12.7	-14.9	17.8	-17.6	-4.9
Architectural and engineering activities; technical testing and analysis	M71	3.8	-4.0	6.0	9.0	-4.8	23.6
Advertising and market research	M73	0.5	-3.8	8.4	-5.5	10.5	-7.7
Other professional, scientific and technical activities	M74	4.7	-13.6	5.0	4.3	-0.6	-6.4
<b>Administrative and support service activities</b>	<b>N</b>	<b>0.3</b>	<b>0.7</b>	<b>-2.3</b>	<b>10.6</b>	<b>-6.6</b>	<b>5.9</b>
Rental and leasing activities	N77	-8.0	0.9	-1.2	-3.7	-0.7	5.7
Employment activities	N78	1.7	3.0	-0.3	2.8	13.2	1.2
Travel agency, tour operator reservation service and related activities	N79	3.4	-3.6	-4.4	1.9	1.3	4.4
Security and investigation activities	N80	5.9	-1.4	-5.5	4.2	-0.4	16.8
Services to buildings and landscape activities	N81	-1.0	3.7	1.7	6.7	-1.8	2.7
Office administrative, office support and other business support activities	N82	-1.7	3.5	-0.8	41.6	-30.0	-1.9

<sup>1</sup> Seasonally adjusted data.

\* Preliminary data.

**Table 2**

**Changes of production indices in services<sup>1</sup>**  
**(Compared to the same month of the previous year)**

(Per cent)

Economic activities	NACE.BG - 2008	2024					2025
		VIII	IX	X	XI	XII	I*
<b>Services of the business economy (except trade and financial and insurance activities)</b>	<b>HTNXK</b>	<b>1.7</b>	<b>2.1</b>	<b>1.2</b>	<b>-0.8</b>	<b>0.7</b>	<b>7.6</b>
<b>Transportation and storage</b>	<b>H</b>	<b>-0.5</b>	<b>1.7</b>	<b>2.5</b>	<b>1.0</b>	<b>6.5</b>	<b>4.7</b>
Land transport and transport via pipelines	H49	-0.5	2.0	3.2	3.6	7.1	3.0
Water transport	H50	-11.7	-14.5	-23.9	-22.7	-22.8	19.9
Air transport	H51	-4.7	8.4	25.2	9.2	59.8	19.7
Warehousing and support activities for transportation	H52	-1.6	-2.5	-5.4	-8.0	-0.6	6.6
Postal and courier activities	H53	14.3	13.0	17.9	18.3	10.8	1.5
<b>Accommodation and food service activities</b>	<b>I</b>	<b>5.3</b>	<b>4.0</b>	<b>2.6</b>	<b>3.7</b>	<b>0.1</b>	<b>2.7</b>
Accommodation	I55	15.8	16.3	9.6	5.6	0.9	-2.2
Food and beverage service activities	I56	-5.8	-6.4	-1.6	2.5	-0.4	6.4
<b>Information and communication</b>	<b>J</b>	<b>2.9</b>	<b>4.0</b>	<b>3.4</b>	<b>-0.4</b>	<b>0.4</b>	<b>11.9</b>
Publishing activities	J58	63.2	-14.5	-3.1	-13.3	-20.3	19.9
Motion picture, video, television programme production; programming and broadcasting activities	J59	-20.6	39.2	-8.7	41.0	-24.6	20.0
Programming and broadcasting activities	J60	-11.0	-14.1	-8.7	-17.5	-3.6	7.3
Telecommunications	J61	4.2	11.9	12.8	7.4	6.6	-1.0
Computer programming, consultancy and related activities	J62	1.3	-1.1	-0.1	-0.4	-1.1	17.0
Information service activities	J63	-5.4	8.5	-2.3	-27.4	9.8	38.3
<b>Real estate activities</b>	<b>L</b>	<b>-11.5</b>	<b>-4.5</b>	<b>-8.6</b>	<b>-29.0</b>	<b>-5.6</b>	<b>10.0</b>
<b>Professional, scientific and technical activities (specific grouping under Regulation (EU) 2019/2152)</b>	<b>M_STS</b>	<b>6.3</b>	<b>2.6</b>	<b>2.5</b>	<b>6.0</b>	<b>-1.9</b>	<b>11.5</b>
Legal and accounting activities	M69	15.1	3.8	7.6	-7.9	-11.7	19.3
Management consultancy activities	M702	120.7	66.2	36.1	48.4	22.6	-6.0
Architectural and engineering activities; technical testing and analysis	M71	-7.3	-14.6	-1.0	17.6	-2.4	46.3
Advertising and market research	M73	-10.8	-20.0	-12.0	-13.7	-6.0	-13.7
Other professional, scientific and technical activities	M74	-33.5	-13.8	-10.4	-6.0	-6.9	5.1
<b>Administrative and support service activities</b>	<b>N</b>	<b>-0.4</b>	<b>-0.1</b>	<b>-5.2</b>	<b>0.6</b>	<b>0.7</b>	<b>1.6</b>
Rental and leasing activities	N77	12.3	12.9	-0.2	-10.8	-1.0	-30.6
Employment activities	N78	-6.9	-9.2	-9.5	-8.2	13.1	21.9
Travel agency, tour operator reservation service and related activities	N79	9.7	-0.3	-12.1	-14.0	-4.0	14.2
Security and investigation activities	N80	-5.8	-1.3	-7.8	-8.3	-5.0	19.3
Services to buildings and landscape activities	N81	-17.0	-11.9	-8.7	0.5	0.6	3.0
Office administrative, office support and other business support activities	N82	-0.8	3.6	3.6	29.0	2.1	-3.9

<sup>1</sup> Calendar-adjusted data.

\* Preliminary data.

# SERVICES PRODUCTION INDICES IN JANUARY 2025

Table 3

## Production indices in services - seasonally adjusted (2021 = 100)

NACE.BG - 2008	2024												2025
	I	II	III	IV	V	VI	VII	VIII	IX	X	XI	XII	I*
<b>HTNXK</b>	<b>115.2</b>	<b>115.5</b>	<b>114.5</b>	<b>117.7</b>	<b>116.2</b>	<b>117.1</b>	<b>119.1</b>	<b>120.0</b>	<b>119.4</b>	<b>119.1</b>	<b>118.4</b>	<b>120.2</b>	<b>123.8</b>
<b>H</b>	<b>109.1</b>	<b>111.3</b>	<b>111.3</b>	<b>117.2</b>	<b>110.8</b>	<b>109.7</b>	<b>113.0</b>	<b>109.5</b>	<b>109.9</b>	<b>114.0</b>	<b>109.9</b>	<b>114.9</b>	<b>114.5</b>
H49	103.9	108.0	105.8	111.2	104.7	105.2	107.0	104.0	104.0	106.6	104.4	107.4	107.1
H50	119.2	128.0	119.3	132.4	121.0	131.4	128.0	136.1	125.0	125.1	127.9	137.1	142.8
H51	215.5	223.6	226.8	266.2	283.2	255.0	250.9	229.1	256.4	309.1	240.3	313.3	259.8
H52	105.0	103.9	109.2	111.3	103.8	100.9	107.0	103.6	103.1	104.7	102.1	107.1	111.4
H53	123.8	120.7	116.7	128.9	118.1	120.2	130.2	127.3	126.2	133.1	132.8	124.2	126.2
<b>I</b>	<b>141.3</b>	<b>143.6</b>	<b>143.8</b>	<b>144.6</b>	<b>142.9</b>	<b>143.7</b>	<b>144.4</b>	<b>143.6</b>	<b>144.0</b>	<b>143.7</b>	<b>144.4</b>	<b>144.0</b>	<b>144.9</b>
I55	177.3	177.9	179.6	182.3	182.0	188.6	190.7	188.6	187.2	179.9	178.6	179.4	177.9
I56	120.1	122.9	122.0	122.1	120.7	119.7	117.9	117.8	118.8	122.3	124.2	123.2	125.6
<b>J</b>	<b>113.4</b>	<b>114.9</b>	<b>113.9</b>	<b>115.8</b>	<b>117.5</b>	<b>115.9</b>	<b>119.7</b>	<b>120.3</b>	<b>122.0</b>	<b>120.4</b>	<b>116.6</b>	<b>121.1</b>	<b>126.9</b>
J58	82.5	89.2	85.8	88.8	92.4	88.6	110.6	150.4	86.2	85.1	89.0	84.8	98.6
J59	93.2	104.8	101.9	92.2	83.1	123.6	109.6	87.4	109.5	106.7	107.0	82.2	111.8
J60	80.3	96.4	71.4	96.3	82.0	75.0	76.6	82.1	79.7	77.7	73.5	78.7	85.8
J61	116.3	120.1	118.8	118.0	121.4	120.9	122.2	120.7	125.6	125.7	123.4	122.4	115.7
J62	116.5	114.1	116.5	118.1	120.0	116.8	121.2	122.7	124.9	122.3	120.3	126.1	135.7
J63	113.9	119.0	106.9	120.2	121.0	110.6	122.6	115.6	123.3	120.6	92.7	130.9	156.3
<b>L</b>	<b>92.4</b>	<b>95.3</b>	<b>92.7</b>	<b>101.4</b>	<b>95.5</b>	<b>105.3</b>	<b>94.9</b>	<b>97.0</b>	<b>103.5</b>	<b>96.5</b>	<b>88.9</b>	<b>102.2</b>	<b>101.6</b>
<b>M_STS</b>	<b>117.5</b>	<b>114.8</b>	<b>110.8</b>	<b>114.4</b>	<b>115.2</b>	<b>119.0</b>	<b>125.6</b>	<b>135.6</b>	<b>124.4</b>	<b>124.0</b>	<b>128.8</b>	<b>122.6</b>	<b>130.6</b>
M69	115.0	118.1	108.6	113.6	130.0	117.7	124.9	136.5	129.3	128.9	119.0	114.4	137.2
M702	145.5	140.9	104.0	117.8	116.7	144.3	170.4	199.9	174.5	148.4	174.8	144.1	136.9
M71	102.8	97.1	116.4	111.4	111.1	105.2	109.7	113.9	109.4	116.0	126.4	120.3	148.8
M73	134.8	125.3	118.2	128.6	114.9	123.9	115.2	115.8	111.5	120.8	114.1	126.0	116.3
M74	101.2	102.6	106.4	105.3	102.9	112.2	115.4	120.8	104.4	109.6	114.3	113.6	106.3
<b>N</b>	<b>123.0</b>	<b>115.6</b>	<b>116.9</b>	<b>113.3</b>	<b>116.3</b>	<b>117.9</b>	<b>114.9</b>	<b>115.2</b>	<b>116.0</b>	<b>113.3</b>	<b>125.3</b>	<b>117.0</b>	<b>123.8</b>
N77	172.1	122.8	129.3	122.7	116.3	126.3	129.3	119.0	120.1	118.6	114.2	113.4	119.8
N78	112.0	112.0	116.4	97.7	124.6	121.1	111.1	112.9	116.3	115.9	119.1	134.9	136.5
N79	193.7	194.4	193.1	197.0	197.0	205.7	200.6	207.4	199.9	191.1	194.7	197.3	205.9
N80	97.8	102.7	101.0	100.9	103.2	98.8	97.6	103.4	101.9	96.3	100.4	99.9	116.7
N81	111.0	108.4	112.2	113.6	103.3	108.3	101.2	100.2	103.9	105.6	112.7	110.7	113.6
N82	109.6	107.2	107.1	106.1	107.5	110.9	107.4	105.6	109.3	108.4	153.4	107.4	105.3

\* Preliminary data.

# SERVICES PRODUCTION INDICES IN JANUARY 2025

Table 4

## Production indices in services - calendar-adjusted (2021 = 100)

NACE.BG - 2008	2024												2025
	I	II	III	IV	V	VI	VII	VIII	IX	X	XI	XII	I*
<b>HTNXK</b>	<b>99.3</b>	<b>104.4</b>	<b>114.3</b>	<b>112.2</b>	<b>112.1</b>	<b>124.2</b>	<b>129.8</b>	<b>126.8</b>	<b>122.5</b>	<b>117.6</b>	<b>114.9</b>	<b>134.4</b>	<b>106.8</b>
<b>H</b>	<b>93.2</b>	<b>101.9</b>	<b>113.9</b>	<b>116.0</b>	<b>110.2</b>	<b>115.6</b>	<b>126.2</b>	<b>111.1</b>	<b>111.4</b>	<b>118.7</b>	<b>110.2</b>	<b>110.4</b>	<b>97.6</b>
H49	88.5	102.8	112.9	112.0	104.2	109.4	115.4	98.5	101.8	112.9	109.5	104.7	91.1
H50	90.7	104.8	117.5	135.3	130.2	135.8	153.3	151.0	129.5	134.9	116.6	133.2	108.8
H51	118.7	124.2	149.7	209.2	281.8	326.8	424.3	373.6	350.6	301.8	131.9	212.9	142.0
H52	94.5	94.5	110.5	111.1	103.4	105.1	116.6	106.8	104.3	108.0	100.9	104.9	100.7
H53	119.4	116.5	121.3	129.2	113.6	120.8	127.4	119.1	118.7	134.4	146.7	136.3	121.2
<b>I</b>	<b>113.9</b>	<b>120.1</b>	<b>127.3</b>	<b>126.6</b>	<b>136.3</b>	<b>161.3</b>	<b>202.4</b>	<b>222.1</b>	<b>158.1</b>	<b>121.4</b>	<b>109.5</b>	<b>124.9</b>	<b>116.9</b>
I55	133.1	144.2	146.5	148.1	159.5	220.4	302.2	341.3	219.5	132.0	114.2	136.3	130.2
I56	102.7	106.0	116.0	114.0	122.7	126.9	144.1	152.5	122.3	115.1	106.7	118.2	109.2
<b>J</b>	<b>102.5</b>	<b>104.7</b>	<b>117.4</b>	<b>109.9</b>	<b>112.9</b>	<b>120.0</b>	<b>117.4</b>	<b>113.4</b>	<b>121.3</b>	<b>122.0</b>	<b>119.7</b>	<b>150.8</b>	<b>114.7</b>
J58	71.5	72.9	73.3	77.2	82.4	93.7	135.1	149.8	105.7	89.0	91.0	96.4	85.8
J59	69.2	84.8	100.6	80.6	71.7	123.0	98.8	70.1	93.1	123.4	122.8	153.7	83.1
J60	56.1	89.6	74.8	99.6	87.4	79.0	64.5	60.1	75.0	95.8	100.5	82.5	60.1
J61	109.7	110.7	116.0	112.4	120.8	124.8	124.2	123.5	130.2	126.3	123.8	134.4	108.6
J62	104.0	103.4	126.1	111.4	113.2	122.5	115.6	111.1	121.2	123.6	120.2	168.8	121.6
J63	104.0	113.8	110.3	119.1	114.5	107.3	116.4	102.0	116.4	115.1	115.6	158.7	143.9
<b>L</b>	<b>87.1</b>	<b>91.7</b>	<b>91.3</b>	<b>94.8</b>	<b>87.7</b>	<b>109.3</b>	<b>96.8</b>	<b>97.7</b>	<b>111.2</b>	<b>91.4</b>	<b>85.5</b>	<b>123.4</b>	<b>95.9</b>
<b>M_STS</b>	<b>96.9</b>	<b>103.3</b>	<b>114.7</b>	<b>110.6</b>	<b>108.7</b>	<b>125.4</b>	<b>126.4</b>	<b>126.0</b>	<b>122.3</b>	<b>122.8</b>	<b>129.4</b>	<b>168.8</b>	<b>108.1</b>
M69	101.2	108.7	114.6	118.5	129.0	125.8	127.7	122.7	122.6	123.9	114.3	142.7	120.8
M702	120.1	125.9	105.5	108.6	101.7	155.1	179.0	197.9	195.9	145.4	167.4	187.1	113.0
M71	79.4	84.2	121.7	102.9	100.3	107.7	108.7	109.8	97.5	109.6	127.5	199.2	116.1
M73	96.8	106.7	116.9	129.3	115.2	128.9	111.3	98.8	105.0	134.8	134.7	168.4	83.5
M74	93.9	98.9	112.7	98.8	97.4	118.6	113.1	108.3	102.3	109.0	111.9	145.1	98.6
<b>N</b>	<b>104.6</b>	<b>105.0</b>	<b>110.5</b>	<b>109.6</b>	<b>114.5</b>	<b>128.1</b>	<b>126.7</b>	<b>127.0</b>	<b>126.1</b>	<b>111.7</b>	<b>121.1</b>	<b>118.4</b>	<b>106.3</b>
N77	140.4	109.9	123.0	130.9	124.2	130.0	141.2	121.5	121.6	113.1	115.3	123.3	97.4
N78	99.2	108.1	116.0	101.7	123.1	120.5	110.4	111.2	114.4	117.6	119.1	155.4	121.0
N79	105.0	115.4	126.4	139.4	162.0	301.7	326.0	370.5	323.1	167.3	95.8	123.0	119.9
N80	89.5	101.0	98.6	99.7	101.7	98.9	98.9	105.6	103.9	98.9	99.6	107.6	106.8
N81	94.8	98.6	110.2	112.7	106.6	116.5	109.9	103.4	102.9	106.0	112.7	116.3	97.7
N82	105.8	104.0	109.0	101.7	106.5	119.1	105.8	100.2	111.7	108.3	167.5	104.8	101.6

\* Preliminary data.