

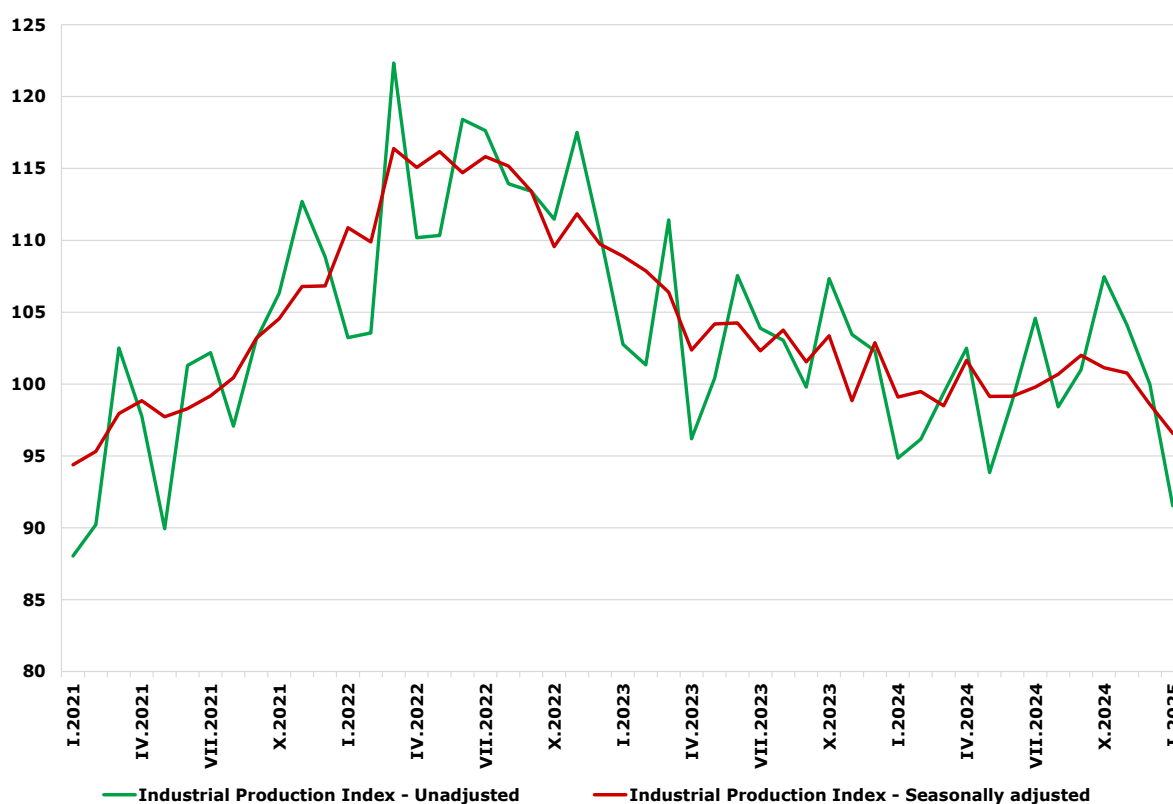


INDUSTRIAL PRODUCTION INDICES IN JANUARY 2025

The Industrial Production Index decreased by 2.0% in January 2025 compared to the previous month. The data are preliminary and seasonally adjusted.

In comparison with January 2024, a decrease of 3.5% was registered in the calendar-adjusted Industrial Production Index.

Figure 1. Industrial Production Indices (2021 = 100)



Monthly changes

In January 2025, compared to the previous month, a decrease was seen in the mining and quarrying industry - by 19.0%, and in the manufacturing - by 1.1%, while a rise was registered in the electricity, gas, steam and air conditioning supply - by 12.5%.

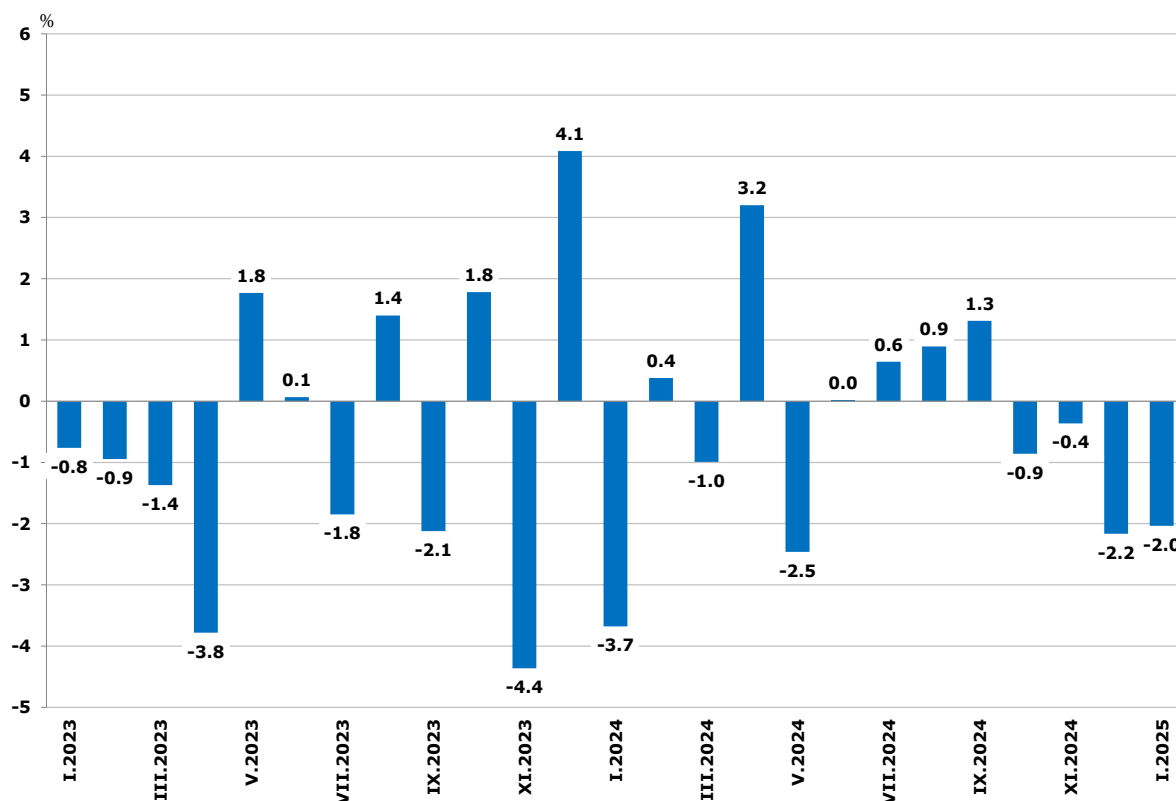
More significant decline in the manufacturing was reported in other manufacturing - by 16.8%, and in the manufacture of computer, electronic and optical products - by 15.2%.

A growth was observed in the manufacture of motor vehicles, trailers and semi-trailers- by 17.8%, in the manufacture of fabricated metal products, except machinery and equipment- by 16.6%, and in the repair and installation of machinery and equipment - by 15.0%.

INDUSTRIAL PRODUCTION INDICES IN JANUARY 2025

Figure 2. Changes of Industrial Production

Indices compared to the previous month
(Seasonally adjusted)



Annual changes

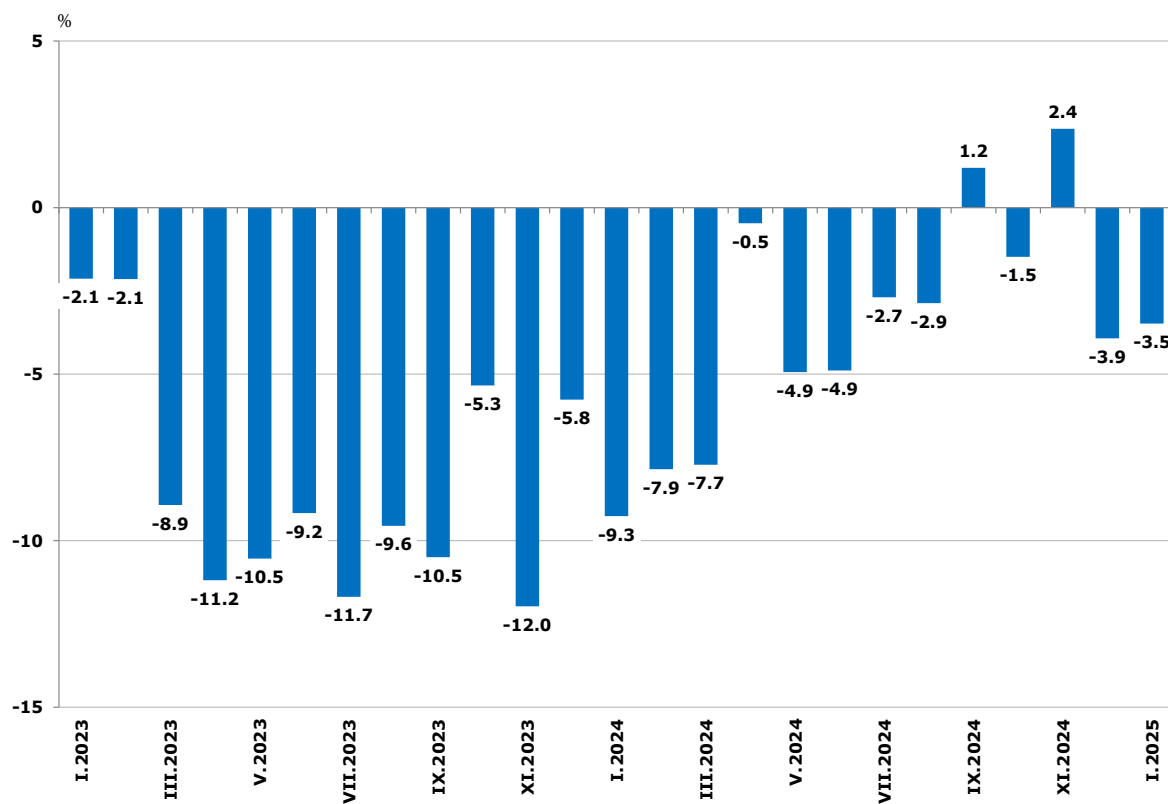
On an annual basis, a decrease of the Industrial Production Index was observed in the electricity, gas, steam and air conditioning supply - by 14.5%, in the mining and quarrying industry - by 4.5%, and in the manufacturing - by 0.3%.

In the manufacturing, a significant decline in production, compared to the same month of the previous year, was seen in the manufacture of basic metals - by 34.1%, in the manufacture of textiles - by 22.2%, and in the manufacture of paper and paper products - by 21.5%.

A rise was reported in the manufacture of tobacco products - by 58.1%, in the manufacture of other transport equipment - by 33.3%, and in the manufacture of other non-metallic mineral products - by 30.3%.

INDUSTRIAL PRODUCTION INDICES IN JANUARY 2025

**Figure 3. Changes of the Industrial Production Indices compared to
the same month of the previous year
(Calendar-adjusted)**



INDUSTRIAL PRODUCTION INDICES

IN JANUARY 2025

Methodological notes

The monthly indices of industrial production are calculated in accordance with the requirements of Regulation (EU) 2019/2152 of the European Parliament and of the Council on European Business Statistics.

The Monthly Industrial Production and Industrial Turnover Indices measure changes in production and turnover values of industrial enterprises. This information can be used to assess the current economic development and for short-term forecasts. Indices do not measure the actual production level; they aim to measure the average change in the value of production between two points in time. Indices are compiled based on information collected through a representative sampling survey on industrial enterprises. The sample covers enterprises with an annual turnover of more than 97% of the total turnover in the industry.

The Industrial Production Indices are calculated at a constant base year, that is to say they are weighted with the structure of the value added at factor costs in the base year.

Seasonal adjustment is a statistical method which eliminates the seasonal component of the time series.

Calendar adjustment is an adjustment for variations in the monthly data, caused by calendar effects, the different number of calendar and working days in the months, national holidays and outliers (for example, the presence of more non-working days in May could contribute to the decline in production in some activities).

Since July 2024, all dynamic rows have been recalculated based on 2021 as base year and have been published in IS Infostat.

INDUSTRIAL PRODUCTION INDICES

IN JANUARY 2025

Annex

Table 1

Changes of Industrial Production Indices compared to the previous month¹

(Per cent)

Economic activities	NACE.BG - 2008	2024					2025
		VIII	IX	X	XI	XII	I*
Industry	B_TO_E36	0.9	1.3	-0.9	-0.4	-2.2	-2.0
Mining and quarrying	B	22.2	9.4	-23.3	1.5	20.9	-19.0
Mining of coal and lignite	B05	-17.7	-12.0	-54.7	186.3	63.9	-56.1
Extraction of crude petroleum and natural gas	B06
Mining of metal ores	B07	11.6	6.4	-8.9	-2.9	5.8	-8.0
Other mining and quarrying	B08	-0.9	-7.0	3.6	2.0	-8.4	9.3
Mining support service activities	B09
Manufacturing	C	1.9	-0.9	1.5	-0.1	-2.1	-1.1
Manufacture of food products	C10	0.1	-0.5	4.6	-6.7	-1.1	-3.5
Manufacture of beverages	C11	-0.6	3.6	-5.7	-3.3	3.2	-0.2
Manufacture of tobacco products	C12	13.1	2.5	-3.4	-15.1	14.3	12.1
Manufacture of textiles	C13	-7.2	24.7	-15.7	-7.7	-0.4	-10.7
Manufacture of wearing apparel	C14	-2.0	-0.6	2.4	3.2	-16.1	0.1
Manufacture of leather and related products	C15	1.3	-5.4	13.2	-0.5	-7.3	1.5
Manufacture of wood and of products of wood and cork, except furniture; manufacture of articles of straw and plaiting materials	C16	-1.6	7.3	-5.1	4.3	0.5	-2.6
Manufacture of paper and paper products	C17	-8.4	6.7	-4.3	-2.3	-10.5	-9.7
Printing and reproduction of recorded media	C18	-3.9	7.8	-2.6	2.6	-3.3	-0.4
Manufacture of coke and refined petroleum products	C19
Manufacture of chemicals and chemical products	C20	8.9	-5.5	-4.6	11.1	-7.2	-4.8
Manufacture of basic pharmaceutical products and pharmaceutical preparations	C21	10.0	-13.6	11.4	-7.2	7.6	-2.9
Manufacture of rubber and plastic products	C22	-0.4	1.2	-3.7	5.7	-1.2	-3.2
Manufacture of other non-metallic mineral products	C23	-9.3	0.9	5.2	5.2	17.3	0.9
Manufacture of basic metals	C24	-7.3	7.7	-5.5	-4.3	-20.7	1.3
Manufacture of fabricated metal products, except machinery and equipment	C25	6.5	-7.3	14.3	-7.4	-2.9	16.6
Manufacture of computer, electronic and optical products	C26	-3.3	6.1	-2.8	6.5	-2.6	-15.2
Manufacture of electrical equipment	C27	4.2	-3.9	4.6	1.3	-7.8	1.7
Manufacture of machinery and equipment n.e.c.	C28	10.3	2.6	1.0	-6.6	4.0	-0.8
Manufacture of motor vehicles, trailers and semi-trailers	C29	-0.3	-9.4	-7.1	4.4	-6.1	17.8
Manufacture of other transport equipment	C30	52.1	-24.2	12.3	-12.4	6.3	-0.2
Manufacture of furniture	C31	8.3	-2.7	2.4	-2.2	1.7	-1.3
Other manufacturing	C32	-6.1	-9.1	30.5	-6.4	9.6	-16.8
Repair and installation of machinery and equipment	C33	0.1	10.0	9.9	-19.8	6.0	15.0
Electricity, gas, steam and air conditioning supply	D	-17.0	24.7	-5.4	-8.0	-19.1	12.5
Electricity, gas, steam and air conditioning supply	D35	-17.0	24.7	-5.4	-8.0	-19.1	12.5

¹ Seasonally adjusted.

* Preliminary data.

„..“ - Confidential data.

INDUSTRIAL PRODUCTION INDICES

IN JANUARY 2025

Table 2

Changes of Industrial Production Indices compared to the same month of the previous year²

(Per cent)

Economic activities	NACE.BG - 2008	2024					2025
		VIII	IX	X	XI	XII	I*
Industry	B_TO_E36	-2.9	1.2	-1.5	2.4	-3.9	-3.5
Mining and quarrying	B	15.4	30.9	-9.9	-5.0	8.0	-4.5
Mining of coal and lignite	B05	-27.1	-18.3	-53.5	-4.7	26.9	-18.7
Extraction of crude petroleum and natural gas	B06
Mining of metal ores	B07	8.4	23.7	-5.7	-16.3	-4.1	-16.8
Other mining and quarrying	B08	-0.3	-2.0	-15.7	-0.1	-13.7	-1.5
Mining support service activities	B09
Manufacturing	C	-1.9	-1.6	0.2	3.2	-1.2	-0.3
Manufacture of food products	C10	2.7	-0.3	3.3	-2.5	-3.5	-10.8
Manufacture of beverages	C11	-0.6	5.3	-3.4	-12.6	-3.5	-7.6
Manufacture of tobacco products	C12	-19.7	2.5	35.4	3.5	17.6	58.1
Manufacture of textiles	C13	-24.3	10.2	-5.6	-22.4	-14.6	-22.2
Manufacture of wearing apparel	C14	-9.2	-16.8	-10.7	-2.1	-23.0	-18.2
Manufacture of leather and related products	C15	-21.7	-31.1	-7.6	-18.8	-21.8	-4.3
Manufacture of wood and of products of wood and cork, except furniture; manufacture of articles of straw and plaiting materials	C16	0.0	10.0	-2.5	4.1	9.4	-7.4
Manufacture of paper and paper products	C17	11.0	6.3	-1.0	-4.0	-10.6	-21.5
Printing and reproduction of recorded media	C18	-1.0	3.9	2.5	3.5	-14.9	-7.0
Manufacture of coke and refined petroleum products	C19
Manufacture of chemicals and chemical products	C20	11.6	5.0	-11.6	20.1	5.6	-0.7
Manufacture of basic pharmaceutical products and pharmaceutical preparations	C21	17.8	-6.0	7.7	1.4	29.5	3.3
Manufacture of rubber and plastic products	C22	-0.3	-1.2	-5.4	0.3	-0.3	1.7
Manufacture of other non-metallic mineral products	C23	-5.6	-2.2	4.1	13.0	11.8	30.3
Manufacture of basic metals	C24	-19.4	-14.9	-13.9	-14.7	-36.2	-34.1
Manufacture of fabricated metal products, except machinery and equipment	C25	15.1	25.3	23.7	23.9	23.9	28.7
Manufacture of computer, electronic and optical products	C26	-13.9	4.1	6.4	17.4	17.8	-15.3
Manufacture of electrical equipment	C27	-8.2	-8.1	3.3	8.4	-8.5	0.4
Manufacture of machinery and equipment n.e.c.	C28	-1.9	-4.3	3.2	-4.2	-4.3	7.4
Manufacture of motor vehicles, trailers and semi-trailers	C29	-10.6	-14.3	-29.0	-13.4	-14.6	-9.0
Manufacture of other transport equipment	C30	-1.4	-23.0	9.8	4.0	1.6	33.3
Manufacture of furniture	C31	5.2	4.5	13.3	5.0	-6.7	-2.6
Other manufacturing	C32	-32.0	-28.4	-10.1	-3.7	-4.2	-20.2
Repair and installation of machinery and equipment	C33	-8.9	4.5	8.8	-8.5	-9.0	12.6
Electricity, gas, steam and air conditioning supply	D	-10.3	13.3	7.3	11.7	-28.8	-14.5
Electricity, gas, steam and air conditioning supply	D35	-10.3	13.3	7.3	11.7	-28.8	-14.5

² Calendar-adjusted.

* Preliminary data.

..." - Confidential data.

INDUSTRIAL PRODUCTION INDICES

IN JANUARY 2025

Table 3

Industrial Production Indices (Seasonally adjusted, 2021 = 100)

NACE.BG - 2008	2024												2025
	I	II	III	IV	V	VI	VII	VIII	IX	X	XI	XII	I*
B_TO_E36	99.1	99.5	98.5	101.6	99.1	99.2	99.8	100.7	102.0	101.1	100.8	98.6	96.6
B	88.7	80.2	81.8	84.8	76.0	77.2	83.8	102.4	112.0	85.9	87.2	105.4	85.4
B05	51.7	34.7	47.1	47.0	38.7	46.7	58.8	48.4	42.6	19.3	55.2	90.5	39.7
B06
B07	110.3	104.6	101.9	106.4	101.2	100.0	99.6	111.2	118.3	107.8	104.7	110.8	101.9
B08	88.3	105.9	97.3	99.0	89.5	87.6	88.6	87.8	81.6	84.6	86.3	79.0	86.4
B09
C	103.4	106.6	105.2	105.9	103.0	105.6	104.9	106.9	105.9	107.5	107.4	105.2	104.0
C10	106.5	104.6	103.6	105.8	98.3	103.0	103.6	103.7	103.1	107.9	100.6	99.5	96.1
C11	110.8	111.2	103.4	112.8	102.4	106.9	106.0	105.4	109.2	102.9	99.5	102.7	102.5
C12	54.9	66.0	79.0	79.2	70.5	59.9	69.6	78.7	80.6	77.9	66.2	75.6	84.8
C13	62.5	66.4	61.8	62.1	63.9	66.1	62.5	58.0	72.3	61.0	56.3	56.1	50.1
C14	93.7	92.0	88.7	87.8	88.9	91.6	90.2	88.4	87.8	90.0	92.8	77.9	77.9
C15	66.1	70.0	63.7	67.5	66.1	62.7	61.9	62.7	59.3	67.2	66.8	61.9	62.9
C16	96.7	102.6	96.5	91.1	88.7	88.7	87.6	86.2	92.4	87.7	91.5	92.0	89.6
C17	90.2	92.3	89.3	95.7	93.4	94.2	99.9	91.5	97.6	93.4	91.3	81.7	73.8
C18	97.8	95.0	94.8	95.9	93.5	98.6	91.4	87.8	94.6	92.1	94.5	91.4	91.0
C19
C20	97.3	100.1	99.1	107.6	108.5	117.1	100.8	109.7	103.7	98.9	109.9	101.9	97.0
C21	113.4	125.5	126.3	116.1	117.7	115.2	114.3	125.7	108.6	121.0	112.2	120.8	117.3
C22	80.8	79.9	81.9	85.2	82.5	84.4	84.1	83.8	84.8	81.6	86.3	85.3	82.6
C23	88.9	101.9	94.3	97.6	86.1	90.0	94.5	85.8	86.5	91.0	95.7	112.3	113.3
C24	105.7	114.9	114.6	118.8	118.1	122.0	100.3	92.9	100.1	94.6	90.5	71.7	72.6
C25	154.4	147.7	143.7	153.6	145.8	145.2	164.3	175.0	162.1	185.4	171.7	166.8	194.5
C26	105.7	125.2	99.7	99.2	94.7	102.2	105.1	101.6	107.8	104.8	111.6	108.7	92.2
C27	97.2	107.9	101.3	92.2	91.3	96.8	98.8	103.0	98.9	103.5	104.8	96.6	98.3
C28	86.0	92.8	90.7	88.0	85.3	85.4	83.9	92.6	95.0	95.9	89.6	93.1	92.4
C29	125.9	120.7	112.1	126.8	114.8	106.7	116.9	116.5	105.5	98.0	102.3	96.0	113.1
C30	77.7	85.4	100.8	99.4	98.2	94.4	87.5	133.1	100.9	113.3	99.2	105.5	105.2
C31	81.9	81.4	84.3	79.7	80.0	76.1	75.3	81.5	79.4	81.3	79.5	80.8	79.7
C32	137.4	123.2	119.8	119.0	116.8	120.2	116.8	109.7	99.7	130.1	121.8	133.5	111.1
C33	117.7	111.7	103.8	126.2	114.8	113.7	110.6	110.8	121.9	133.9	107.4	113.8	130.9
D	83.3	80.6	75.5	85.6	90.7	69.2	86.2	71.5	89.2	84.4	77.6	62.8	70.7
D35	83.3	80.6	75.5	85.6	90.7	69.2	86.2	71.5	89.2	84.4	77.6	62.8	70.7

* Preliminary data.

„..“ - Confidential data.

INDUSTRIAL PRODUCTION INDICES

IN JANUARY 2025

Table 4

Industrial Production Indices (Calendar-adjusted, 2021 = 100)

NACE.BG - 2008	2024												2025
	I	II	III	IV	V	VI	VII	VIII	IX	X	XI	XII	I*
B_TO_E36	93.9	94.0	101.8	98.8	94.8	101.3	103.1	98.6	102.7	106.0	104.9	101.7	90.7
B	86.5	76.4	79.7	78.3	70.8	74.1	80.8	101.3	119.5	95.8	92.5	119.3	82.6
B05	67.8	37.1	40.2	25.9	17.5	24.2	51.3	44.0	48.8	40.9	71.6	112.5	55.1
B06
B07	111.0	99.4	97.6	109.8	96.7	97.2	87.6	115.5	137.9	109.8	96.3	124.1	92.4
B08	63.7	85.4	93.8	96.7	92.4	93.7	92.4	90.9	86.0	95.7	96.1	78.6	62.8
B09
C	93.7	98.6	108.5	105.7	102.0	111.4	108.7	103.6	107.0	115.6	111.3	102.6	93.4
C10	97.6	92.4	104.5	102.6	97.2	103.9	103.2	104.8	106.7	119.7	103.4	103.0	87.0
C11	80.8	80.9	96.5	109.8	103.9	127.7	131.0	129.8	120.3	95.7	90.4	95.0	74.7
C12	32.8	43.8	80.0	85.4	80.9	72.5	87.8	84.7	90.1	82.5	64.3	73.8	51.9
C13	57.8	67.0	66.0	60.5	67.4	71.4	63.0	47.3	73.6	64.6	59.2	51.5	44.9
C14	98.1	92.2	89.7	79.1	81.9	98.0	102.0	82.5	87.0	92.4	95.5	73.8	80.2
C15	64.7	67.8	68.5	64.4	62.0	66.9	68.0	50.8	58.2	74.7	77.4	56.9	62.0
C16	81.8	91.5	98.0	91.7	92.8	93.3	93.6	83.5	95.4	93.9	97.6	86.3	75.7
C17	88.3	88.1	93.1	93.2	93.4	97.9	103.2	85.9	96.7	99.8	95.7	75.1	69.2
C18	87.9	86.6	96.6	94.2	93.4	101.9	90.8	81.1	91.3	98.9	107.0	96.9	81.7
C19
C20	91.7	94.9	108.6	109.4	107.6	120.8	101.5	104.6	102.3	99.4	112.4	100.9	91.1
C21	109.4	116.3	139.0	115.8	115.8	123.5	111.2	114.6	100.4	129.4	112.0	127.1	113.0
C22	74.4	75.6	85.9	84.4	82.7	88.7	87.9	79.0	87.6	89.9	88.0	77.4	75.6
C23	64.3	85.1	93.3	99.9	91.0	95.3	102.8	89.8	91.9	101.3	101.8	103.3	83.8
C24	107.5	112.2	122.7	119.3	119.5	123.3	97.3	83.1	95.6	97.8	92.8	65.1	70.9
C25	120.7	132.3	144.3	156.8	142.0	152.8	176.9	173.4	162.4	196.3	189.1	173.3	155.4
C26	101.4	122.2	102.6	97.8	92.2	107.3	109.0	89.8	108.5	117.4	116.6	104.3	85.9
C27	90.5	108.6	107.4	89.6	85.7	104.9	103.2	96.1	101.2	110.3	112.3	86.6	90.9
C28	77.3	89.6	96.3	90.0	84.2	90.9	87.4	81.5	96.7	104.7	94.1	89.5	83.1
C29	127.3	122.9	119.2	125.0	110.8	108.4	107.9	103.6	107.9	105.7	114.2	84.9	115.8
C30	61.2	80.4	113.2	104.1	99.7	104.3	89.0	130.0	97.0	123.5	97.1	89.7	81.5
C31	72.2	75.1	87.2	78.2	79.0	81.2	77.9	77.7	80.4	88.0	84.5	81.6	70.3
C32	120.0	108.1	121.2	115.3	114.4	137.5	117.7	110.0	103.7	144.1	130.0	122.4	95.7
C33	86.2	95.7	104.3	114.9	108.9	116.9	112.0	107.8	128.1	141.5	117.3	150.2	97.0
D	101.0	81.5	81.5	72.0	70.0	64.1	91.9	76.2	77.3	73.8	86.8	81.8	86.3
D35	101.0	81.5	81.5	72.0	70.0	64.1	91.9	76.2	77.3	73.8	86.8	81.8	86.3

* Preliminary data.

„..“ - Confidential data.