

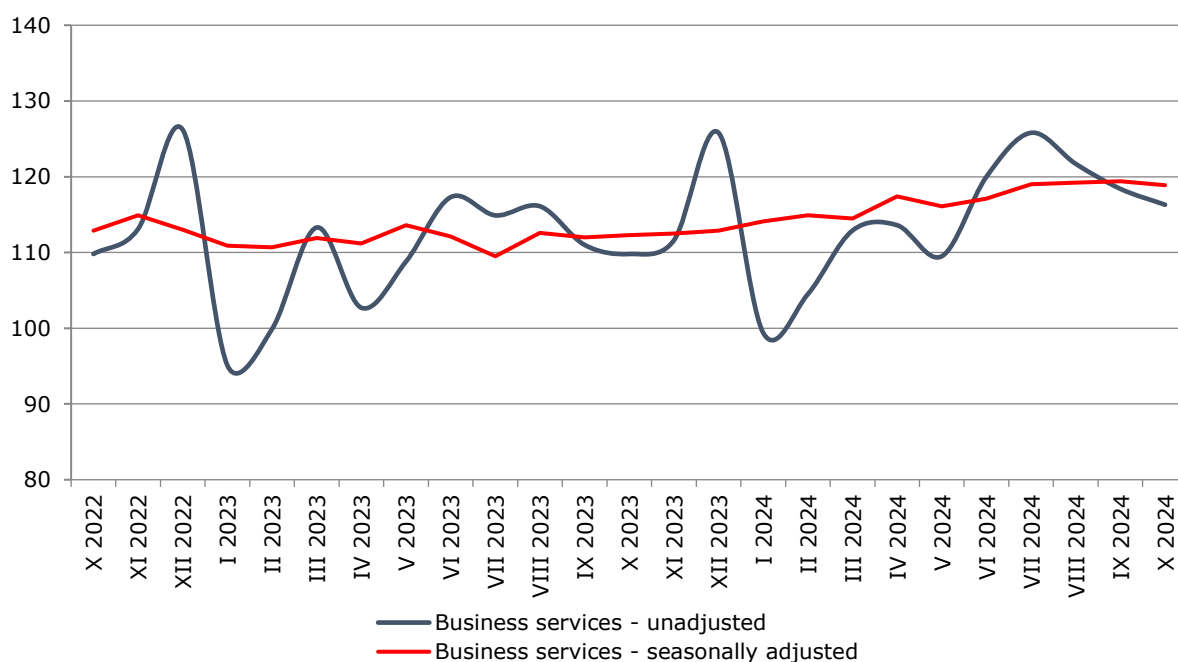


SERVICES PRODUCTION INDICES IN OCTOBER 2024

In October 2024, the total production index in **Services of the business economy**¹ decreased by 0.4% compared to the previous month. The data are preliminary and seasonally adjusted.

Compared to October 2023, an increase of 5.6% was registered in the calendar-adjusted index according to preliminary data.

Figure 1. Production indices for Business services (2021 = 100)

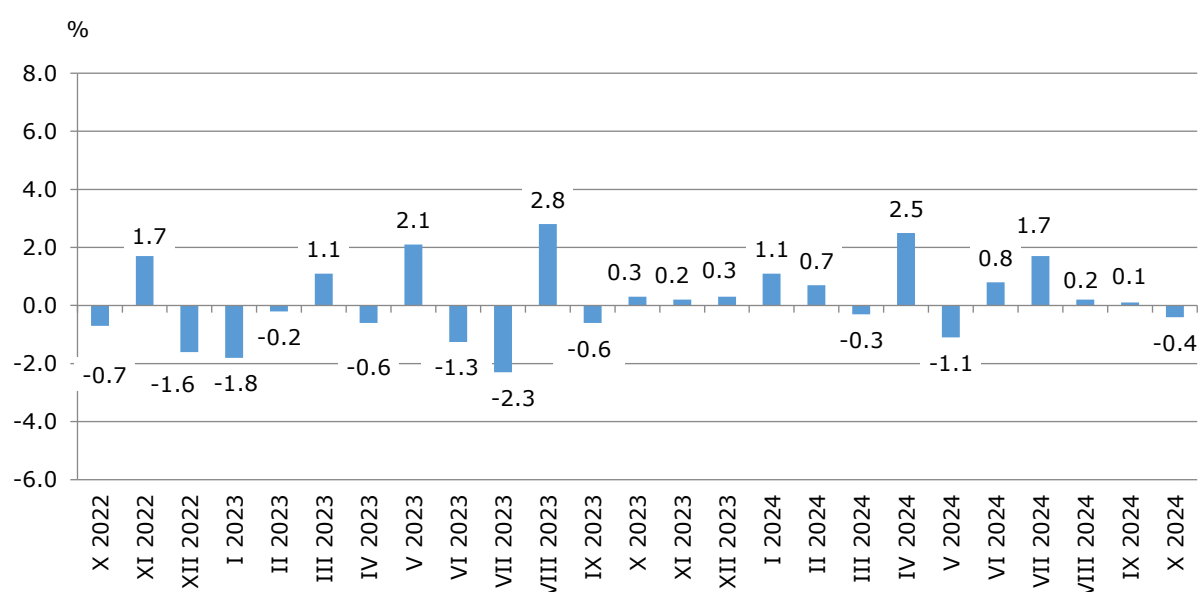


¹ Business services include the following sectors from NACE.BG - 2008: H - Transportation and storage, I - Accommodation and food service activities, J - Information and communication, L - Real estate activities, M_STG - Professional, scientific and technical activities (specific grouping under Regulation (EU) 2019/2152), and N - Administrative and support service activities.

Monthly changes

An increase, compared to the previous month, was reported in two sectors: 'Transportation and storage' - by 3.4%, and 'Accommodation and food service activities' - by 0.1%. A decline was seen in the following sectors: 'Real estate activities' - by 4.1%, 'Administrative and support service activities' - by 3.3%, 'Information and communication' - by 1.9%, and 'Professional, scientific and technical activities' - by 0.7%.

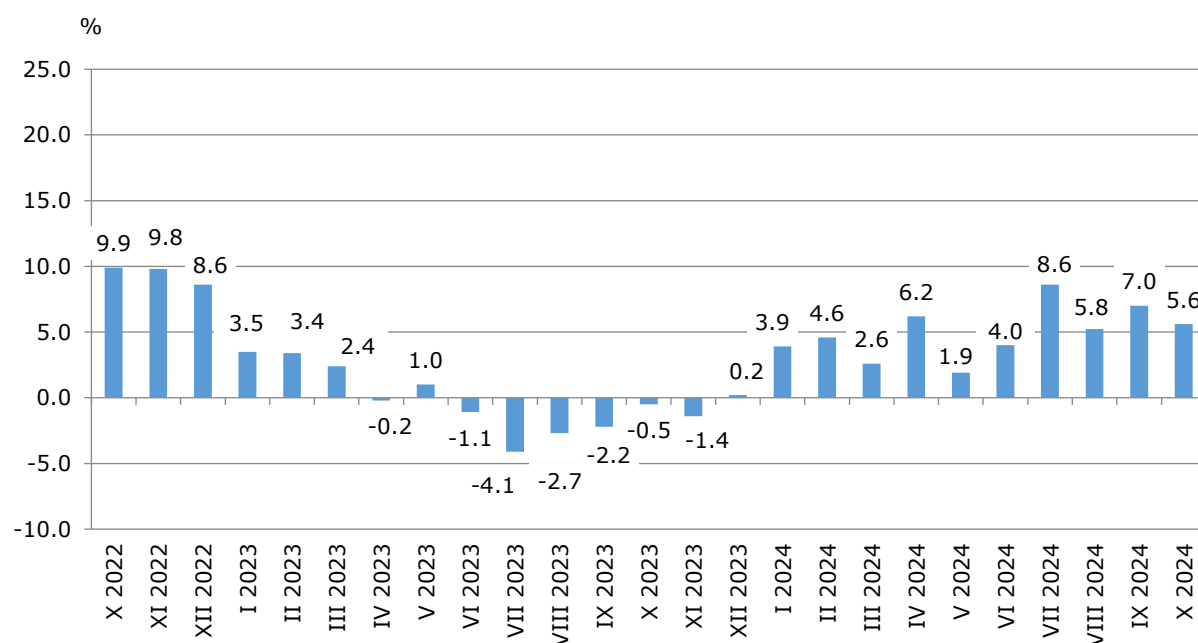
**Figure 2. Changes of production indices for Business services
compared to the previous month
(Seasonally adjusted data)**



Annual changes

On an annual basis, a rise was observed in the following sectors: 'Information and communication' - by 12.2%, 'Professional, scientific and technical activities' - by 9.1%, 'Transportation and storage' - by 4.2%, 'Real estate activities' - by 2.9%, and 'Accommodation and food service activities' - by 2.4%. A decrease was reported only in sector 'Administrative and support service activities' - by 7.1%.

**Figure 3. Changes of production indices for Business services
compared to the same month of the previous year
(Calendar-adjusted data)**



Methodological notes

Monthly indices of production in services are calculated and published two months after the reference period (M+2) in accordance with the requirements of Regulation (EU) 2019/2152 of the European Parliament and of the Council for European Business Statistics.

Production indices in services are calculated by deflating the turnover indices for each activity with the corresponding producer price indices. The purpose of the production index is to measure changes in output volume at monthly intervals. The indices are calculated with 2021 as a base year.

Seasonal adjustment is a statistical method, which eliminates the seasonal component of time series.

Calendar adjustment is an adjustment for variations caused by calendar effects, a different number of calendar and working days in the months, national holidays and outliers (for example, the presence of more non-working days in May could contribute to the decline in some activities).

Since July 2024, all dynamic rows have been recalculated based on the 2021 base year and have been published in IS Infostat.

Annex

Table 1

Changes of production indices in services¹
(Compared to the previous month)

(Per cent)

Economic activities	NACE.BG - 2008	2024					
		V	VI	VII	VIII	IX	X*
Services of the business economy (except trade and financial and insurance activities)	HTNXK	-1.1	0.8	1.7	0.2	0.1	-0.4
Transportation and storage	H	-4.4	0.0	1.4	-3.1	0.9	3.4
Land transport and transport via pipelines	H49	-5.7	0.6	1.1	-2.8	-0.2	2.6
Water transport	H50	-8.7	8.5	-2.5	6.1	-8.2	0.0
Air transport	H51	4.9	-11.4	-3.2	-10.0	19.6	22.4
Warehousing and support activities for transportation	H52	-2.4	0.9	1.6	-3.0	0.2	0.1
Postal and courier activities	H53	-9.0	2.0	8.7	-2.1	-0.9	4.9
Accommodation and food service activities	I	-1.4	1.6	0.7	-1.2	-1.1	0.1
Accommodation	I55	0.3	4.7	0.0	-1.2	-1.9	-3.7
Food and beverage service activities	I56	0.0	-0.9	-1.4	4.1	-3.1	2.1
Information and communication	J	1.7	-0.8	3.3	0.4	1.9	-1.9
Publishing activities	J58	5.3	-3.1	36.0	28.9	-44.6	-0.5
Motion picture, video, television programme production; programming and broadcasting activities	J59	-10.9	47.9	-10.8	-20.5	29.4	-5.0
Programming and broadcasting activities	J60	-14.3	-8.7	2.3	7.3	-3.2	-2.5
Telecommunications	J61	3.8	0.6	0.0	-0.8	4.5	0.4
Computer programming, consultancy and related activities	J62	1.7	-2.2	3.8	1.2	2.6	-3.2
Information service activities	J63	0.2	-9.5	11.5	-6.3	6.5	-2.5
Real estate activities	L	-4.3	9.1	-9.0	1.5	5.1	-4.1
Professional, scientific and technical activities (specific grouping under Regulation (EU) 2019/2152)	M_STS	-0.2	0.3	7.5	5.4	-4.2	-0.7
Legal and accounting activities	M69	15.0	-8.8	6.6	8.5	-3.1	-0.8
Management consultancy activities	M702	-1.1	14.2	17.9	14.8	-2.9	-15.1
Architectural and engineering activities; technical testing and analysis	M71	-4.7	-12.2	14.9	-2.7	-0.7	7.2
Advertising and market research	M73	-10.6	7.9	-7.1	0.3	-3.7	8.4
Other professional, scientific and technical activities	M74	-1.5	9.6	2.3	4.5	-11.5	2.5
Administrative and support service activities	N	1.4	1.8	-2.2	0.1	-0.8	-3.3
Rental and leasing activities	N77	-11.6	4.0	2.3	-9.9	1.9	-4.3
Employment activities	N78	27.4	-2.9	-8.5	1.6	2.9	-0.4
Travel agency, tour operator reservation service and related activities	N79	1.6	13.2	0.4	4.7	-13.1	-10.2
Security and investigation activities	N80	2.3	-4.0	-1.0	5.1	-1.8	-4.6
Services to buildings and landscape activities	N81	-9.3	5.2	-7.0	-1.3	3.6	1.6
Office administrative, office support and other business support activities	N82	1.5	2.9	-3.0	-0.7	3.2	-0.4

¹ Seasonally adjusted data.

* Preliminary data.

Table 2

Changes of production indices in services¹
(Compared to the same month of the previous year)

(Per cent)

Economic activities	NACE.BG - 2008	2024					
		V	VI	VII	VIII	IX	X*
Services of the business economy (except trade and financial and insurance activities)	HTNXK	1.9	4.0	8.6	5.8	7.0	5.6
Transportation and storage	H	1.8	2.8	10.3	1.3	3.5	4.2
Land transport and transport via pipelines	H49	-1.1	4.0	6.7	-1.3	1.1	2.3
Water transport	H50	-7.9	3.9	8.6	7.4	4.0	-7.5
Air transport	H51	38.8	6.0	18.2	-0.7	12.9	30.4
Warehousing and support activities for transportation	H52	0.4	-1.0	12.6	4.2	3.3	0.1
Postal and courier activities	H53	3.6	5.1	23.4	13.3	11.9	16.8
Accommodation and food service activities	I	8.8	6.8	6.5	4.9	3.5	2.4
Accommodation	I55	23.5	20.3	20.6	15.8	16.3	9.6
Food and beverage service activities	I56	1.9	-2.2	-6.1	-5.5	-6.8	-0.7
Information and communication	J	13.1	2.8	15.3	11.7	13.8	12.2
Publishing activities	J58	2.7	-3.9	22.0	76.8	-7.3	5.0
Motion picture, video, television programme production; programming and broadcasting activities	J59	-10.8	32.7	17.5	-23.5	39.6	-11.3
Programming and broadcasting activities	J60	-13.6	-25.5	-9.5	-13.5	-16.6	-11.3
Telecommunications	J61	13.4	6.8	16.7	9.4	17.5	18.5
Computer programming, consultancy and related activities	J62	17.0	0.4	15.9	14.2	12.5	12.6
Information service activities	J63	8.4	2.4	7.0	1.8	16.7	4.9
Real estate activities	L	-4.5	13.6	-0.2	-0.6	7.3	2.9
Professional, scientific and technical activities (specific grouping under Regulation (EU) 2019/2152)	M_STS	-11.4	2.5	8.2	12.2	10.1	9.1
Legal and accounting activities	M69	24.7	23.2	12.5	28.6	18.6	20.3
Management consultancy activities	M702	-11.5	14.2	56.9	129.2	72.6	41.4
Architectural and engineering activities; technical testing and analysis	M71	-31.1	-27.3	-17.1	-14.0	-16.3	-2.1
Advertising and market research	M73	-8.0	4.2	-8.1	-8.3	-17.8	-9.6
Other professional, scientific and technical activities	M74	-19.5	15.1	11.4	-21.5	3.6	5.1
Administrative and support service activities	N	-4.8	2.4	-0.4	-0.6	-0.4	-7.1
Rental and leasing activities	N77	-33.6	-8.3	-13.7	-24.1	-22.6	-33.0
Employment activities	N78	8.2	2.9	0.7	4.3	1.7	1.4
Travel agency, tour operator reservation service and related activities	N79	24.1	24.9	18.3	24.2	12.9	-2.3
Security and investigation activities	N80	5.7	-0.8	-0.7	1.5	5.8	-1.0
Services to buildings and landscape activities	N81	-3.5	-1.2	-7.9	-7.9	-2.2	1.3
Office administrative, office support and other business support activities	N82	-1.4	1.7	1.3	-0.1	4.3	4.2

¹ Calendar-adjusted data.

* Preliminary data.

Table 3

Production indices in services - seasonally adjusted
(2021 = 100)

NACE.BG - 2008	2023			2024*									
	X	XI	XII	I	II	III	IV	V	VI	VII	VIII	IX	X
HTNXK	112.3	112.5	112.9	114.1	114.9	114.5	117.4	116.1	117.1	119.0	119.2	119.4	118.9
H	109.7	105.7	105.6	108.5	110.9	110.9	116.7	111.6	111.6	113.2	109.6	110.6	114.4
H49	104.2	101.2	101.4	104.0	107.9	106.0	111.2	104.8	105.5	106.6	103.6	103.4	106.1
H50	134.4	135.4	146.5	119.9	128.6	119.6	132.6	121.0	131.3	128.0	135.8	124.6	124.7
H51	266.1	202.0	201.4	212.2	221.8	228.8	271.4	284.6	252.3	244.1	219.8	263.0	321.7
H52	102.7	101.7	101.9	103.5	102.9	107.4	109.0	106.3	107.3	109.0	105.7	105.9	106.0
H53	116.4	115.6	110.2	123.2	120.5	116.3	129.1	117.5	119.9	130.3	127.5	126.3	132.6
I	134.5	135.4	138.0	137.0	139.5	139.6	140.3	138.4	140.6	141.5	139.8	138.3	138.4
I55	149.7	151.9	160.0	163.2	164.5	167.3	170.9	171.4	179.4	179.4	177.2	173.8	167.3
I56	123.8	123.6	123.3	121.2	122.7	122.8	122.2	122.3	121.2	119.5	124.4	120.6	123.1
J	107.2	107.1	110.0	113.5	114.8	114.1	115.4	117.4	116.4	120.3	120.7	123.1	120.8
J58	81.3	93.3	96.7	85.4	92.2	88.7	86.9	91.5	88.6	120.5	155.4	86.1	85.7
J59	121.6	79.0	109.2	94.8	105.4	104.9	93.5	83.3	123.2	109.9	87.4	113.1	107.4
J60	86.8	89.5	84.0	82.1	96.8	71.7	96.5	82.7	75.5	77.2	82.9	80.2	78.2
J61	107.6	110.3	109.3	113.2	119.3	117.5	117.2	121.6	122.3	122.4	121.3	126.8	127.2
J62	108.1	105.9	112.9	118.2	114.1	117.6	117.7	119.7	117.1	121.5	123.0	126.2	122.2
J63	112.5	124.4	109.9	116.4	119.3	106.3	120.4	120.7	109.2	121.8	114.1	121.6	118.5
L	94.5	104.9	98.0	94.5	96.4	93.3	100.7	96.4	105.1	95.6	97.1	102.0	97.8
M_STS	114.5	114.4	118.2	115.5	115.0	113.8	115.7	115.4	115.8	124.5	131.2	125.7	124.8
M69	108.3	115.3	115.0	116.5	118.8	111.8	111.7	128.5	117.2	124.9	135.5	131.3	130.3
M702	109.7	115.3	122.1	124.3	124.7	115.3	118.8	117.5	134.1	158.1	181.5	176.1	149.5
M71	120.2	113.3	121.7	109.0	108.6	115.8	118.0	112.5	98.8	113.5	110.4	109.6	117.4
M73	133.9	128.1	131.3	134.5	125.4	118.3	128.7	115.1	124.2	115.3	115.7	111.5	120.8
M74	103.8	103.6	104.4	100.4	102.5	108.7	104.5	103.0	112.9	115.4	120.6	106.8	109.5
N	120.1	123.7	116.4	118.9	114.0	116.6	116.2	117.8	119.9	117.3	117.3	116.4	112.6
N77	173.4	177.9	161.9	154.6	118.9	131.8	142.1	125.6	130.6	133.6	120.4	122.7	117.4
N78	113.6	115.4	107.5	113.0	112.3	116.6	97.8	124.6	120.9	110.7	112.5	115.8	115.2
N79	165.6	165.0	161.7	183.6	186.1	186.7	193.2	196.2	222.1	222.9	233.4	202.8	182.2
N80	96.7	101.5	97.9	97.6	101.9	100.2	100.5	102.9	98.7	97.8	102.8	100.9	96.2
N81	103.7	102.3	98.7	111.3	108.7	112.8	113.8	103.2	108.6	101.0	99.7	103.3	104.9
N82	108.1	113.5	105.4	107.2	106.4	106.5	106.2	107.8	110.9	107.6	106.8	110.3	109.8

* Preliminary data.

SERVICES PRODUCTION INDICES IN OCTOBER 2024

Table 4

Production indices in services - calendar-adjusted (2021 = 100)

NACE.BG - 2008	2023			2024*									
	X	XI	XII	I	II	III	IV	V	VI	VII	VIII	IX	X
HTNXK	111.1	110.9	126.7	98.9	104.4	114.2	112.0	111.6	123.4	129.0	125.7	122.1	117.3
H	113.9	107.5	102.0	93.2	101.9	114.1	115.8	110.2	115.6	126.2	111.1	111.4	118.7
H49	110.3	106.6	98.7	88.5	102.8	112.9	112.0	104.2	109.4	115.4	98.5	101.8	112.9
H50	145.8	124.0	141.9	90.7	104.8	117.5	135.3	130.2	135.8	153.3	151.0	129.5	134.9
H51	231.4	115.9	127.9	118.7	124.2	149.7	209.2	281.8	326.8	424.3	373.6	350.6	301.8
H52	107.9	103.6	99.6	94.5	94.5	111.3	110.3	103.4	105.1	116.6	106.8	104.3	108.0
H53	115.0	125.1	124.1	119.4	116.5	121.3	129.2	113.6	120.8	127.4	119.1	118.7	134.4
I	114.9	102.6	121.0	110.2	116.1	123.2	122.5	131.8	155.2	193.9	212.6	152.0	117.7
I55	111.3	99.9	124.7	123.0	133.2	135.4	136.8	147.3	203.6	279.1	315.3	202.7	121.9
I56	116.6	104.9	118.7	102.9	104.6	116.2	112.6	125.2	127.9	144.3	154.0	123.1	115.8
J	108.7	110.7	138.1	102.5	104.7	118.1	109.8	112.9	120.1	117.4	113.4	122.0	121.9
J58	84.8	96.8	111.6	71.5	72.9	73.3	77.2	82.4	93.7	135.1	149.8	105.7	89.0
J59	139.5	90.2	208.6	69.4	84.9	103.5	81.4	71.5	122.2	99.1	70.1	96.0	123.8
J60	108.0	125.4	88.1	56.1	89.6	74.7	99.6	87.4	79.0	64.5	60.1	75.0	95.8
J61	106.6	109.8	120.0	109.7	110.7	116.0	112.4	120.8	124.8	124.2	123.5	130.2	126.3
J62	109.7	107.1	151.6	104.0	103.4	127.4	111.3	113.2	122.6	115.6	111.1	122.4	123.6
J63	109.5	148.0	134.3	104.0	113.8	110.3	119.1	114.5	107.3	116.4	102.0	116.4	114.8
L	89.1	107.2	116.4	87.1	91.7	91.3	94.8	87.7	109.3	96.8	97.7	111.2	91.6
M_STS	113.1	115.9	161.0	97.3	106.4	115.2	112.3	108.2	124.3	127.1	125.9	123.2	123.5
M69	103.1	111.0	144.7	101.2	108.7	117.2	118.4	129.0	125.8	127.7	122.7	125.3	124.0
M702	102.8	108.6	146.9	120.1	125.9	105.5	108.6	101.7	155.1	179.0	197.9	195.9	145.4
M71	115.1	115.3	200.0	80.8	96.7	118.9	110.3	98.4	102.9	111.7	109.3	96.6	112.6
M73	149.2	151.9	174.3	96.8	106.7	116.9	129.3	115.2	128.9	111.3	98.8	105.0	134.8
M74	103.4	101.0	133.2	93.7	98.8	115.5	98.1	97.6	119.1	112.8	108.3	104.7	108.7
N	119.9	124.3	121.3	104.5	104.8	110.9	109.2	114.4	128.2	126.5	127.0	126.3	111.4
N77	169.0	191.9	187.8	139.9	109.7	126.6	129.1	124.7	131.2	140.3	121.7	124.9	113.3
N78	116.0	115.8	122.6	99.2	108.1	116.0	101.7	123.1	120.5	110.4	111.2	114.4	117.6
N79	168.1	98.3	113.2	105.0	115.4	126.4	139.4	162.0	301.7	326.0	370.5	323.1	164.3
N80	99.6	100.8	105.5	89.4	100.2	97.8	99.3	101.2	98.8	98.9	105.2	102.8	98.6
N81	104.7	101.1	104.2	94.8	98.6	110.2	112.7	106.6	116.5	109.9	103.4	102.9	106.0
N82	103.8	128.9	101.9	105.8	104.0	109.0	101.7	106.5	119.1	105.8	100.2	111.7	108.2

* Preliminary data.