

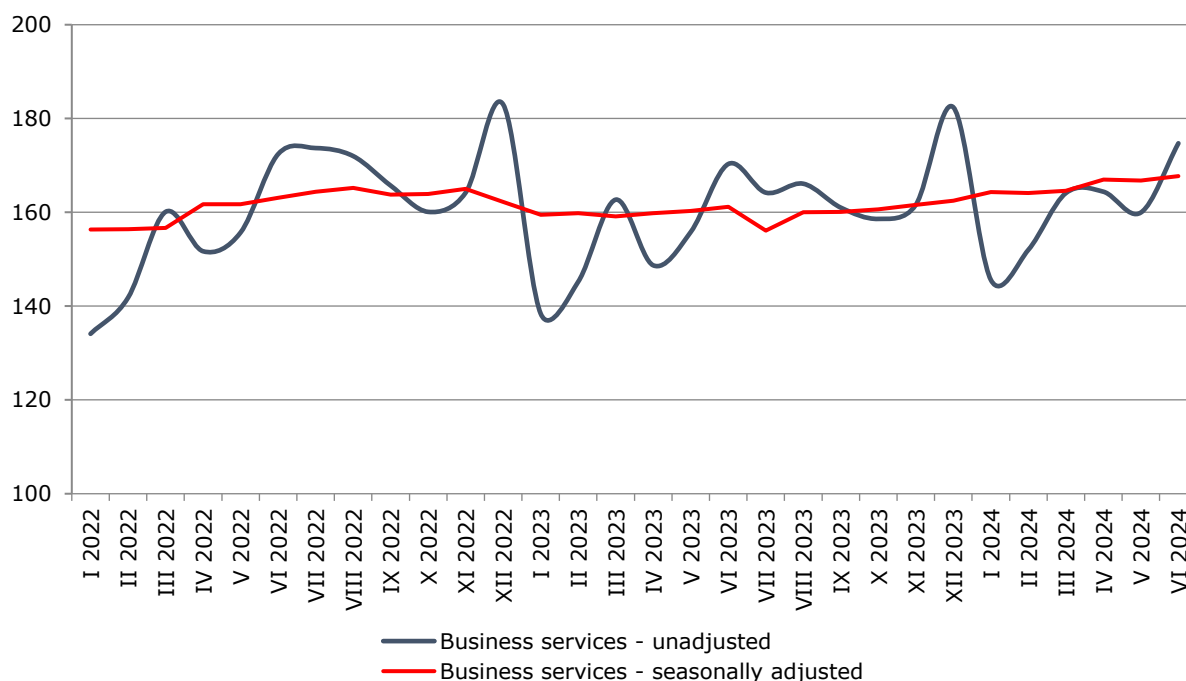


## SERVICES PRODUCTION INDICES IN JUNE 2024

In June 2024, the total production index in **Services of the business economy**<sup>1</sup> increased by 0.6% compared to the previous month. The data are preliminary and seasonally adjusted.

Compared to June 2023, an increase of 4.3% was registered in the calendar-adjusted index according to preliminary data.

**Figure 1. Production indices for Business services (2015=100)**

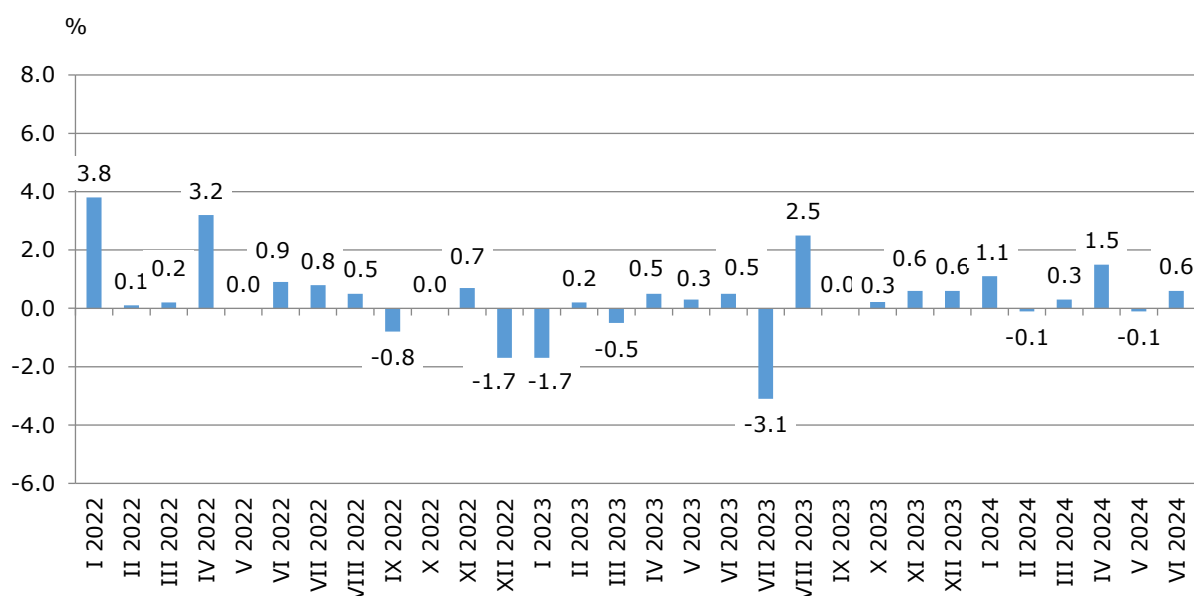


<sup>1</sup> Business services include the following sectors from NACE.BG – 2008: H - Transportation and storage, I - Accommodation and food service activities, J - Information and communication, L - Real estate activities, M\_STS - Professional, scientific and technical activities (specific grouping under Regulation (EU) 2019/2152) and N - Administrative and support service activities.

### Monthly changes

An increase, compared to the previous month, was reported in sectors: 'Real estate activities' - by 7.5%, 'Professional, scientific and technical activities' and 'Accommodation and food service activities' - both by 1.7%, 'Transportation and storage' - by 1.6% and 'Administrative and support service activities' - by 1.3%. A decline was seen in the 'Information and communication' sector - by 2.3%.

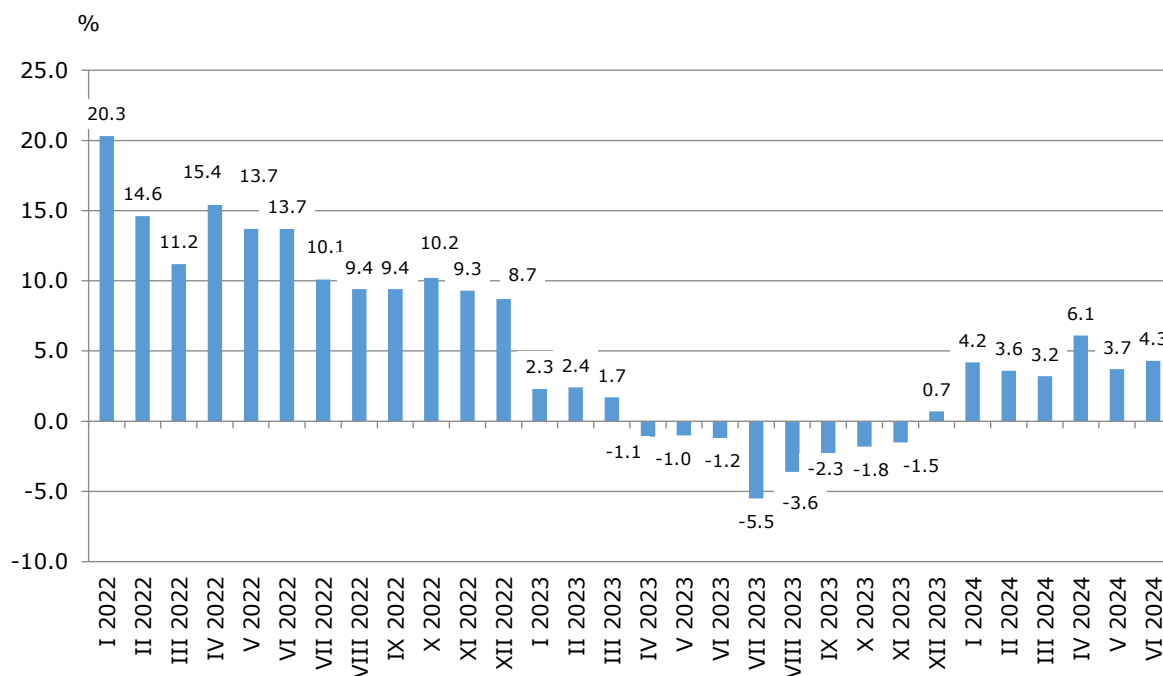
**Figure 2. Changes of production indices for Business services  
compared to the previous month  
(Seasonally adjusted data)**



### Annual changes

On an annual basis, a rise was observed in the following sectors: 'Real estate activities' - by 12.1%, 'Accommodation and food service activities' - by 9.5%, 'Professional, scientific and technical activities' - by 5.2%, 'Transportation and storage' - by 5.0% and 'Information and communication' - by 2.2%. A decrease was reported in the 'Administrative and support service activities' sector - by 1.5%.

**Figure 3. Changes of production indices for Business services compared to the same month of the previous year (Calendar-adjusted data)**



### Methodological notes

Monthly indices of production in services are calculated and published two months after the reference period (M+2) in accordance with the requirements of Regulation (EU) 2019/2152 of the European Parliament and of the Council for European Business Statistics. Production indices in services are calculated by deflating the turnover indices for each activity with the corresponding producer price indices. The purpose of the production index is to measure changes in output volume at monthly intervals. The indices are calculated with 2015 as a base year.

Seasonal adjustment is a statistical method, which eliminates the seasonal component of time series.

Calendar adjustment is an adjustment for variations caused by calendar effects, a different number of calendar and working days in the months, national holidays and outliers (for example, the presence of more non-working days in May could contribute to the decline in some activities).

# SERVICES PRODUCTION INDICES IN JUNE 2024

## Annex

Table 1

### Changes of production indices in services<sup>1</sup> (Compared to the previous month)

(Per cent)

Economic activities	NACE.BG - 2008	2024					
		I	II	III	IV	V	VI*
<b>Services of the business economy (except trade and financial and insurance activities)</b>	<b>HTNXK</b>	<b>1.1</b>	<b>-0.1</b>	<b>0.3</b>	<b>1.5</b>	<b>-0.1</b>	<b>0.6</b>
<b>Transportation and storage</b>	<b>H</b>	<b>0.8</b>	<b>0.2</b>	<b>2.3</b>	<b>2.0</b>	<b>-2.6</b>	<b>1.6</b>
Land transport and transport via pipelines	H49	-1.6	2.4	1.8	1.4	-2.4	3.7
Water transport	H50	-8.8	7.3	2.6	-0.5	-7.0	5.2
Air transport	H51	6.8	4.7	4.6	22.3	2.9	-12.0
Warehousing and support activities for transportation	H52	3.2	-4.0	4.8	-1.2	-2.5	0.2
Postal and courier activities	H53	7.5	-1.5	-2.8	10.6	-6.1	-1.0
<b>Accommodation and food service activities</b>	<b>I</b>	<b>0.3</b>	<b>1.5</b>	<b>0.7</b>	<b>0.6</b>	<b>-0.1</b>	<b>1.7</b>
Accommodation	I55	-0.7	0.2	1.3	1.4	1.5	3.3
Food and beverage service activities	I56	-4.1	4.4	0.5	-1.5	-1.1	-1.5
<b>Information and communication</b>	<b>J</b>	<b>2.9</b>	<b>0.2</b>	<b>0.6</b>	<b>2.0</b>	<b>1.5</b>	<b>-2.3</b>
Publishing activities	J58	-12.5	7.7	-3.9	-0.1	4.7	-3.5
Motion picture, video, television programme production; programming and broadcasting activities	J59	-20.8	16.3	8.4	-7.5	-0.5	21.2
Programming and broadcasting activities	J60	1.0	-1.0	-42.8	86.7	-9.2	-11.9
Telecommunications	J61	4.7	5.2	-1.3	-0.3	3.4	-0.3
Computer programming, consultancy and related activities	J62	2.9	-3.1	4.2	1.2	1.0	-2.7
Information service activities	J63	4.6	2.8	-10.2	12.4	-0.5	-8.7
<b>Real estate activities</b>	<b>L</b>	<b>-3.3</b>	<b>2.7</b>	<b>-1.7</b>	<b>3.1</b>	<b>-2.1</b>	<b>7.5</b>
<b>Professional, scientific and technical activities (specific grouping under Regulation (EU) 2019/2152)</b>	<b>M_STS</b>	<b>-4.5</b>	<b>0.1</b>	<b>-0.8</b>	<b>-0.2</b>	<b>0.6</b>	<b>1.7</b>
Legal and accounting activities	M69	1.1	2.2	-5.4	-3.2	14.2	-6.6
Management consultancy activities	M702	8.4	-2.3	-8.6	1.6	0.8	12.4
Architectural and engineering activities; technical testing and analysis	M71	-16.0	0.3	5.1	1.7	-4.8	-12.1
Advertising and market research	M73	-11.9	-1.8	-3.1	9.3	-10.6	8.4
Other professional, scientific and technical activities	M74	-4.1	1.3	7.6	-5.9	-0.6	10.1
<b>Administrative and support service activities</b>	<b>N</b>	<b>7.0</b>	<b>-5.0</b>	<b>-3.0</b>	<b>0.6</b>	<b>0.0</b>	<b>1.3</b>
Rental and leasing activities	N77	13.9	-22.6	-2.0	8.1	-15.8	0.8
Employment activities	N78	7.7	-0.6	0.9	-17.0	28.9	-2.6
Travel agency, tour operator reservation service and related activities	N79	9.3	1.3	0.7	5.7	9.3	30.6
Security and investigation activities	N80	1.3	11.9	-10.5	1.3	2.2	-5.5
Services to buildings and landscape activities	N81	12.9	-1.6	3.6	-1.4	-9.7	7.7
Office administrative, office support and other business support activities	N82	3.2	-3.4	-1.7	0.6	3.8	1.2

<sup>1</sup> Seasonally adjusted data.

\* Preliminary data.

# SERVICES PRODUCTION INDICES IN JUNE 2024

Table 2

## Changes of production indices in services<sup>1</sup> (Compared to the same month of the previous year)

(Per cent)

Economic activities	NACE.BG - 2008	2024					
		I	II	III	IV	V	VI*
<b>Services of the business economy (except trade and financial and insurance activities)</b>	<b>HTNXK</b>	<b>4.2</b>	<b>3.6</b>	<b>3.2</b>	<b>6.1</b>	<b>3.7</b>	<b>4.3</b>
<b>Transportation and storage</b>	<b>H</b>	<b>1.6</b>	<b>2.5</b>	<b>2.3</b>	<b>12.6</b>	<b>2.8</b>	<b>5.0</b>
Land transport and transport via pipelines	H49	-1.0	1.8	1.6	6.0	1.8	8.7
Water transport	H50	1.3	29.5	27.2	29.6	8.9	6.9
Air transport	H51	-14.1	-4.9	-17.7	2.7	33.2	5.6
Warehousing and support activities for transportation	H52	2.6	0.1	4.8	22.8	0.0	-1.7
Postal and courier activities	H53	17.3	14.9	2.2	25.2	9.0	5.1
<b>Accommodation and food service activities</b>	<b>I</b>	<b>8.4</b>	<b>9.3</b>	<b>9.4</b>	<b>14.3</b>	<b>11.4</b>	<b>9.5</b>
Accommodation	I55	20.2	15.1	16.9	24.5	23.5	20.3
Food and beverage service activities	I56	-2.3	3.1	2.3	2.3	3.8	-2.1
<b>Information and communication</b>	<b>J</b>	<b>6.1</b>	<b>6.2</b>	<b>8.2</b>	<b>11.5</b>	<b>14.1</b>	<b>2.2</b>
Publishing activities	J58	-7.1	9.7	1.7	-17.5	2.4	-4.1
Motion picture, video, television programme production; programming and broadcasting activities	J59	-4.6	2.3	7.5	-8.5	-8.1	21.4
Programming and broadcasting activities	J60	0.6	-4.9	-46.0	10.4	-6.8	-25.5
Telecommunications	J61	8.3	12.7	15.0	13.5	13.6	6.8
Computer programming, consultancy and related activities	J62	4.3	4.1	8.6	13.7	17.3	0.3
Information service activities	J63	15.7	0.0	-4.6	2.2	5.0	1.8
<b>Real estate activities</b>	<b>L</b>	<b>-3.2</b>	<b>1.7</b>	<b>-5.6</b>	<b>1.6</b>	<b>-5.6</b>	<b>12.1</b>
<b>Professional, scientific and technical activities (specific grouping under Regulation (EU) 2019/2152)</b>	<b>M_STS</b>	<b>1.3</b>	<b>0.0</b>	<b>-1.4</b>	<b>-5.2</b>	<b>-11.4</b>	<b>5.2</b>
Legal and accounting activities	M69	0.1	4.8	7.2	-0.3	18.0	22.3
Management consultancy activities	M702	34.9	19.7	-15.6	-5.9	-10.7	13.4
Architectural and engineering activities; technical testing and analysis	M71	-7.9	-14.9	4.6	-22.0	-31.0	-26.0
Advertising and market research	M73	6.6	2.7	-1.9	5.0	-6.0	4.3
Other professional, scientific and technical activities	M74	-14.3	-7.6	-1.8	2.1	-20.1	14.9
<b>Administrative and support service activities</b>	<b>N</b>	<b>8.8</b>	<b>-0.5</b>	<b>-4.5</b>	<b>-10.0</b>	<b>-4.5</b>	<b>-1.5</b>
Rental and leasing activities	N77	29.1	-13.1	-11.8	-28.4	-30.7	-14.5
Employment activities	N78	1.7	-1.0	-2.4	-24.2	7.8	2.9
Travel agency, tour operator reservation service and related activities	N79	19.0	17.6	13.2	23.6	24.1	24.9
Security and investigation activities	N80	1.1	13.1	3.4	6.5	8.9	-2.6
Services to buildings and landscape activities	N81	4.0	1.1	3.0	6.9	-9.7	-1.1
Office administrative, office support and other business support activities	N82	3.6	-2.6	-8.8	-3.4	6.7	1.6

<sup>1</sup> Calendar-adjusted data.

\* Preliminary data.

# SERVICES PRODUCTION INDICES IN JUNE 2024

Table 3

## Production indices in services - seasonally adjusted (2015=100)

NACE.BG - 2008	2023							2024*					
	VI	VII	VIII	IX	X	XI	XII	I	II	III	IV	V	VI
<b>HTNXK</b>	<b>161.2</b>	<b>156.1</b>	<b>160.0</b>	<b>160.1</b>	<b>160.6</b>	<b>161.6</b>	<b>162.5</b>	<b>164.3</b>	<b>164.1</b>	<b>164.6</b>	<b>167.0</b>	<b>166.8</b>	<b>167.7</b>
<b>H</b>	<b>136.2</b>	<b>133.8</b>	<b>136.0</b>	<b>137.1</b>	<b>141.3</b>	<b>136.2</b>	<b>138.7</b>	<b>139.8</b>	<b>140.0</b>	<b>143.3</b>	<b>146.2</b>	<b>142.4</b>	<b>144.7</b>
H49	128.6	128.6	129.7	131.0	132.5	127.0	131.6	129.5	132.7	135.0	136.9	133.6	138.6
H50	114.4	104.8	111.7	108.8	116.0	113.9	124.2	113.2	121.5	124.7	124.1	115.4	121.3
H51	152.7	131.8	135.5	139.6	165.6	125.9	124.2	132.6	138.8	145.2	177.5	182.5	160.7
H52	140.1	135.9	139.0	140.1	147.2	145.5	144.9	149.4	143.5	150.4	148.6	144.9	145.2
H53	183.9	177.8	185.1	183.5	188.9	187.4	184.5	198.3	195.3	190.0	210.1	197.3	195.2
<b>I</b>	<b>146.6</b>	<b>138.5</b>	<b>135.9</b>	<b>145.9</b>	<b>147.8</b>	<b>148.5</b>	<b>152.0</b>	<b>152.4</b>	<b>154.7</b>	<b>155.8</b>	<b>156.7</b>	<b>156.5</b>	<b>159.1</b>
I55	146.3	131.6	128.0	143.4	144.2	145.3	152.1	151.0	151.3	153.3	155.4	157.8	163.0
I56	147.0	145.7	144.9	148.0	152.8	152.6	153.3	147.0	153.4	154.2	151.9	150.3	148.0
<b>J</b>	<b>211.1</b>	<b>193.3</b>	<b>199.0</b>	<b>203.4</b>	<b>199.7</b>	<b>200.5</b>	<b>205.7</b>	<b>211.7</b>	<b>212.2</b>	<b>213.5</b>	<b>217.8</b>	<b>221.1</b>	<b>216.0</b>
J58	115.3	117.9	109.8	114.2	100.5	116.6	120.6	105.5	113.7	109.3	109.2	114.3	110.3
J59	77.1	70.6	86.6	63.8	90.6	59.5	82.1	65.0	75.6	82.0	75.8	75.4	91.4
J60	87.6	78.9	87.0	85.8	83.7	82.6	83.7	84.5	83.7	47.9	89.4	81.2	71.5
J61	182.0	166.0	174.8	170.8	169.5	173.8	171.2	179.2	188.6	186.0	185.5	191.8	191.3
J62	251.8	224.1	230.3	244.9	235.2	230.7	246.1	253.2	245.2	255.5	258.6	261.2	254.3
J63	225.8	246.4	236.7	226.2	242.7	268.7	237.9	248.8	255.8	229.8	258.2	257.0	234.6
<b>L</b>	<b>128.9</b>	<b>126.6</b>	<b>128.7</b>	<b>128.5</b>	<b>126.8</b>	<b>140.2</b>	<b>131.5</b>	<b>127.1</b>	<b>130.5</b>	<b>128.3</b>	<b>132.2</b>	<b>129.5</b>	<b>139.2</b>
<b>M_STS</b>	<b>139.2</b>	<b>148.0</b>	<b>155.6</b>	<b>144.0</b>	<b>142.3</b>	<b>144.9</b>	<b>149.0</b>	<b>142.3</b>	<b>142.4</b>	<b>141.3</b>	<b>141.1</b>	<b>141.8</b>	<b>144.3</b>
M69	121.8	140.1	136.0	144.6	139.4	148.5	147.8	149.3	152.6	144.4	139.8	159.7	149.1
M702	159.4	165.8	134.4	139.3	139.6	156.0	153.2	166.0	162.1	148.1	150.6	151.7	170.5
M71	130.5	134.3	128.4	129.6	124.1	117.4	129.7	109.0	109.3	114.9	116.9	111.3	97.8
M73	133.7	140.5	135.5	147.3	152.3	147.3	157.5	138.8	136.2	132.0	144.2	129.0	139.8
M74	156.0	164.0	244.3	162.7	162.8	163.3	164.1	157.4	159.5	171.6	161.6	160.7	176.8
<b>N</b>	<b>171.1</b>	<b>172.1</b>	<b>178.0</b>	<b>172.2</b>	<b>178.0</b>	<b>183.4</b>	<b>168.8</b>	<b>180.7</b>	<b>171.7</b>	<b>166.5</b>	<b>167.5</b>	<b>167.5</b>	<b>169.7</b>
N77	234.4	260.2	282.4	257.6	299.5	310.6	263.1	299.5	231.7	227.1	245.4	206.7	208.4
N78	128.1	120.2	118.8	123.4	123.3	125.3	116.4	125.4	124.6	125.7	104.3	134.5	131.0
N79	132.6	124.6	124.7	142.1	113.1	103.8	99.8	109.1	110.5	111.2	117.5	128.5	167.8
N80	119.5	118.9	125.9	111.8	114.3	118.3	117.3	118.8	133.0	119.1	120.6	123.2	116.4
N81	182.2	176.1	171.1	173.4	177.6	177.9	163.2	184.3	181.4	187.9	185.2	167.2	180.1
N82	230.8	227.1	230.0	232.7	231.9	243.7	227.9	235.1	227.1	223.2	224.5	233.1	235.9

\* Preliminary data.

# SERVICES PRODUCTION INDICES IN JUNE 2024

Table 4

## Production indices in services - calendar-adjusted (2015=100)

NACE.BG - 2008	2023							2024*					
	VI	VII	VIII	IX	X	XI	XII	I	II	III	IV	V	VI
<b>HTNXK</b>	<b>169.5</b>	<b>165.8</b>	<b>164.8</b>	<b>162.1</b>	<b>158.9</b>	<b>160.8</b>	<b>185.8</b>	<b>144.7</b>	<b>150.9</b>	<b>166.1</b>	<b>161.2</b>	<b>160.7</b>	<b>176.7</b>
<b>H</b>	<b>142.4</b>	<b>145.5</b>	<b>135.0</b>	<b>138.0</b>	<b>147.6</b>	<b>139.7</b>	<b>137.3</b>	<b>121.7</b>	<b>130.8</b>	<b>148.1</b>	<b>148.6</b>	<b>142.3</b>	<b>149.5</b>
H49	131.7	139.4	121.7	129.7	141.4	133.1	130.7	110.9	126.3	145.0	136.3	133.0	143.1
H50	122.5	123.5	117.6	114.5	127.9	112.6	138.0	90.0	98.4	120.3	122.6	114.8	131.0
H51	193.4	227.6	237.3	194.7	147.1	73.6	80.2	75.1	78.7	93.9	137.0	183.9	204.1
H52	149.7	145.4	144.1	142.6	152.2	146.0	140.6	133.4	133.1	150.0	162.5	146.9	147.1
H53	187.3	168.3	172.5	172.6	187.3	205.9	207.9	194.6	190.0	197.8	209.6	192.7	196.8
<b>I</b>	<b>161.7</b>	<b>206.4</b>	<b>232.5</b>	<b>164.0</b>	<b>123.6</b>	<b>110.4</b>	<b>131.5</b>	<b>121.6</b>	<b>128.8</b>	<b>135.6</b>	<b>135.2</b>	<b>145.5</b>	<b>177.1</b>
I55	163.2	223.3	262.6	168.2	107.4	96.4	120.3	118.6	128.5	130.6	132.0	142.1	196.4
I56	159.9	186.5	197.2	159.2	142.5	126.8	144.6	125.1	129.1	141.4	135.7	154.4	156.5
<b>J</b>	<b>219.6</b>	<b>187.6</b>	<b>186.0</b>	<b>200.8</b>	<b>201.7</b>	<b>206.7</b>	<b>259.6</b>	<b>191.8</b>	<b>194.5</b>	<b>223.7</b>	<b>207.6</b>	<b>212.8</b>	<b>224.4</b>
J58	123.0	139.6	106.8	143.8	106.8	121.9	140.5	90.1	91.8	92.3	97.2	103.6	118.0
J59	76.6	62.7	72.2	53.4	103.9	68.2	154.8	46.1	61.4	78.8	69.8	66.4	93.0
J60	99.5	63.5	63.8	84.3	99.6	114.4	82.6	57.8	69.7	64.1	89.2	84.2	74.2
J61	185.1	168.6	178.4	175.5	168.8	173.7	190.2	173.8	175.3	183.7	177.9	191.4	197.8
J62	265.8	212.7	206.9	236.5	238.7	233.5	329.4	223.9	223.4	277.3	244.9	247.5	266.6
J63	226.8	232.1	213.2	215.8	235.1	317.2	290.9	223.5	244.2	238.8	253.7	244.6	230.8
<b>L</b>	<b>130.2</b>	<b>129.2</b>	<b>130.7</b>	<b>137.7</b>	<b>119.3</b>	<b>143.7</b>	<b>156.5</b>	<b>117.9</b>	<b>124.9</b>	<b>125.1</b>	<b>126.9</b>	<b>116.9</b>	<b>146.0</b>
<b>M_STS</b>	<b>149.2</b>	<b>146.4</b>	<b>140.2</b>	<b>140.1</b>	<b>139.9</b>	<b>142.5</b>	<b>200.3</b>	<b>122.5</b>	<b>133.6</b>	<b>144.0</b>	<b>138.3</b>	<b>134.6</b>	<b>156.9</b>
M69	131.5	142.5	120.0	136.0	133.0	143.3	186.0	129.8	140.8	151.5	148.3	160.6	160.8
M702	182.7	158.6	120.1	152.8	136.2	143.8	197.8	158.6	166.1	140.7	147.4	138.0	207.3
M71	137.7	137.9	122.5	117.8	115.0	112.7	210.6	80.0	95.3	117.7	108.9	97.6	101.9
M73	137.6	134.3	119.9	142.0	164.8	167.5	193.8	108.0	119.7	130.0	144.2	128.3	143.5
M74	162.8	159.8	216.9	159.5	162.3	158.1	210.5	146.3	155.1	181.5	151.3	152.7	187.1
<b>N</b>	<b>180.0</b>	<b>179.0</b>	<b>182.2</b>	<b>175.9</b>	<b>175.0</b>	<b>191.7</b>	<b>176.0</b>	<b>162.5</b>	<b>160.6</b>	<b>161.2</b>	<b>162.8</b>	<b>163.8</b>	<b>177.2</b>
N77	249.3	269.8	288.0	265.4	288.5	338.0	299.6	249.4	197.7	205.9	242.3	208.9	213.2
N78	126.5	120.3	117.8	121.5	125.4	125.5	132.5	110.5	120.3	125.5	108.4	132.5	130.2
N79	162.4	185.2	200.6	192.4	113.0	66.1	76.1	70.6	77.6	86.2	93.5	108.9	202.9
N80	119.6	121.4	128.2	114.4	118.1	117.4	126.4	109.4	130.3	116.3	118.9	120.5	116.4
N81	194.3	191.2	177.8	173.6	180.8	178.0	171.8	156.8	164.6	183.0	183.6	172.3	192.2
N82	246.3	222.3	215.1	224.4	219.2	274.0	214.8	236.4	226.1	229.0	214.1	224.4	250.4

\* Preliminary data.