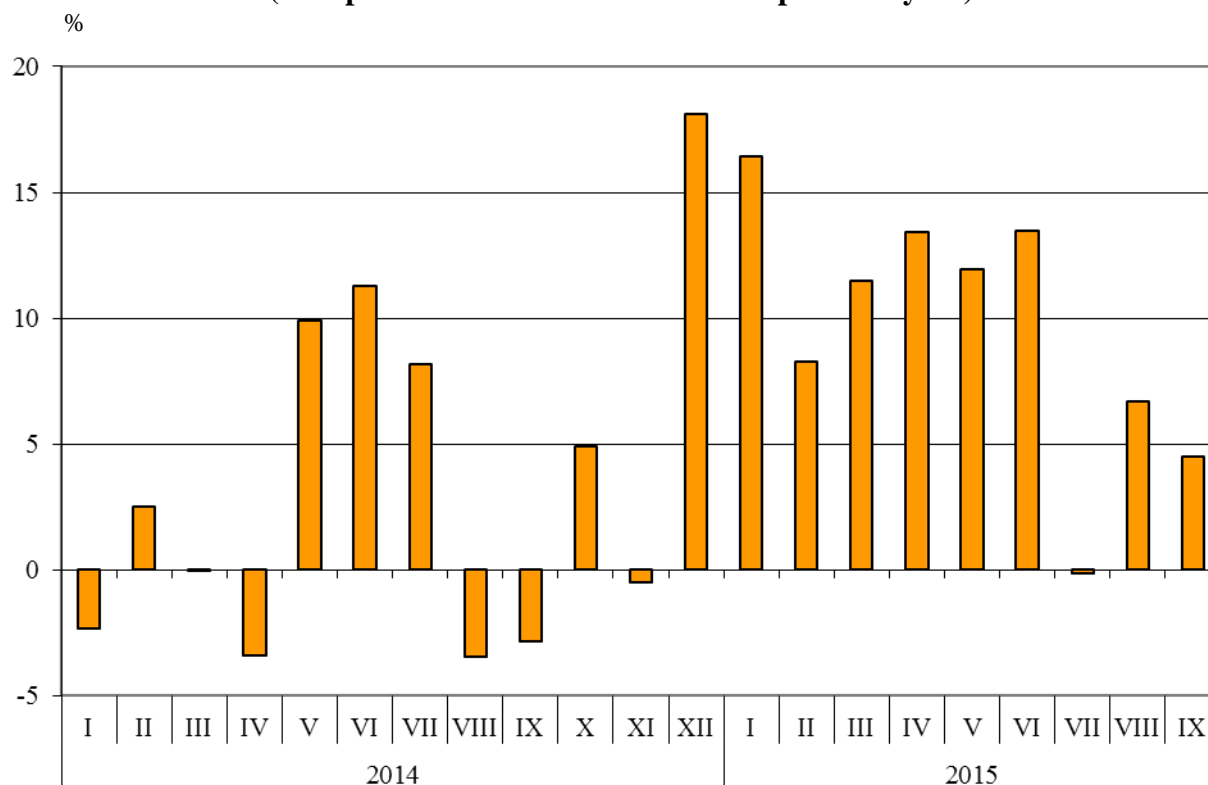


## **BULGARIAN TRADE WITH EU IN THE PERIOD JANUARY - SEPTEMBER 2015 (PRELIMINARY DATA)**

In the period **January - September 2015** Bulgarian **exports to the EU** increased by 9.2% compared to the corresponding period of 2014 and amounted to 21.7 Billion BGN (Annex, Table 1 and 2). Main trade partners of Bulgaria were Germany, Italy, Romania, Greece, France and Belgium which accounted for 69.4% of the exports to the EU Member States (Annex, Table 3).

In September 2015 the exports to the EU increased by 4.5% compared to the corresponding month of the previous year and amounted to 2.485 Billion BGN.

**Figure 1. Nominal value<sup>1</sup> change of exports of Bulgaria to EU in the period 2014 - 2015  
 (Compared to the same month of the previous year)**

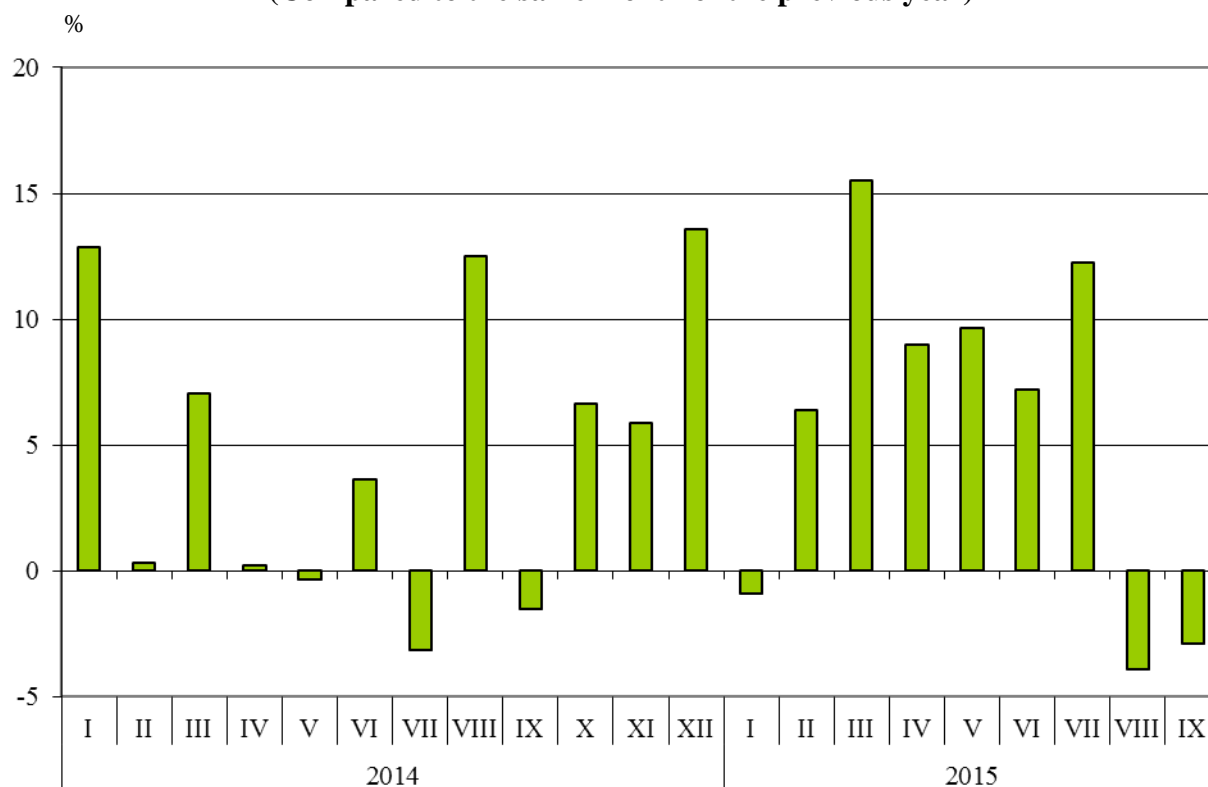


Bulgarian **imports from the EU** in the period January - September 2015 increased by 5.9% compared to the same period of 2014 and added up to 24.3 Billion BGN at CIF prices (Annex, Tables 1 and 2). The largest amounts were reported for the goods imported from Germany, Italy, Romania, Spain and Greece (Annex, Table 3).

In **September** 2015 the Bulgarian imports from the EU Member States decreased by 2.9% compared to the corresponding month of the previous year and amounted to 2.673 Billion BGN at CIF prices.

<sup>1</sup> Value changes at current prices.

**Figure 2. Nominal value<sup>1</sup> change of imports of Bulgaria from EU in the period 2014 - 2015**  
**(Compared to the same month of the previous year)**



The **foreign trade balance** of Bulgaria (export FOB - import CIF) **with the EU** in the period January - September 2015 was negative and added up to 2 507.9 Million BGN (Annex, Table 1). At FOB/FOB prices (after elimination of transport and insurance costs on imports) the trade balance was also negative and amounted to 879.9 Million BGN.

In the nine months of **2015** compared to the same period of 2014 the largest growth **in the exports** of Bulgaria to the **EU** distributed according to the Standard International Trade Classification (Annex, Table 4) was recorded in the sections 'Chemical and related products n.e.c.' (22.0%) and 'Mineral fuel, lubricants and related materials' (20.8%). Fall was recorded in section 'Beverages and tobacco' (5.4%).

In **imports from the EU** the largest growth was reported in the section 'Beverages and tobacco' (22.5%) while the most notable fall was observed in section 'Mineral fuel, lubricants and related materials' (24.7%).

<sup>1</sup> Value changes at current prices.

## Annex

Exports, imports and trade balance of Bulgaria in the period January - September 2014 and 2015<sup>1</sup> by months

Table 1

(Million BGN)

Months/Periods	Exports - FOB			Imports - CIF			Imports - FOB <sup>2</sup>			Trade balance - FOB/CIF			Trade balance - FOB/FOB <sup>2</sup>		
	Total	EU	Non-EU	Total	EU	Non-EU	Total	EU	Non-EU	Total	EU	Non-EU	Total	EU	Non-EU
I.2014	3099.1	1970.5	1128.6	3955.8	2333.1	1622.7	3677.7	2172.5	1505.2	-856.7	-362.6	-494.1	-578.6	-202.0	-376.6
II.2014	3226.8	2001.1	1225.7	3795.4	2466.6	1328.8	3535.1	2306.6	1228.5	-568.6	-465.5	-103.1	-308.3	-305.5	-2.8
III.2014	3193.6	2171.8	1021.8	3935.8	2497.8	1438.0	3687.1	2341.3	1345.8	-742.2	-326.0	-416.2	-493.5	-169.5	-324.0
<b>I - III.2014</b>	<b>9519.5</b>	<b>6143.4</b>	<b>3376.1</b>	<b>11687.0</b>	<b>7297.5</b>	<b>4389.5</b>	<b>10899.9</b>	<b>6820.4</b>	<b>4079.5</b>	<b>-2167.5</b>	<b>-1154.1</b>	<b>-1013.4</b>	<b>-1380.4</b>	<b>-677.0</b>	<b>-703.4</b>
IV.2014	3468.6	2117.6	1351.0	4303.1	2630.3	1672.8	4017.5	2455.1	1562.4	-834.5	-512.7	-321.8	-548.9	-337.5	-211.4
V.2014	3499.0	2065.0	1434.0	4132.0	2366.2	1765.8	3856.8	2213.1	1643.7	-633.0	-301.2	-331.8	-357.8	-148.1	-209.7
VI.2014	3704.8	2271.5	1433.3	4168.0	2641.9	1526.1	3881.1	2464.1	1417.0	-463.2	-370.4	-92.8	-176.3	-192.6	16.3
<b>IV - VI.2014</b>	<b>10672.4</b>	<b>6454.1</b>	<b>4218.3</b>	<b>12603.1</b>	<b>7638.4</b>	<b>4964.7</b>	<b>11755.4</b>	<b>7132.3</b>	<b>4623.1</b>	<b>-1930.7</b>	<b>-1184.3</b>	<b>-746.4</b>	<b>-1083.0</b>	<b>-678.2</b>	<b>-404.8</b>
<b>I - VI.2014</b>	<b>20191.9</b>	<b>12597.5</b>	<b>7594.4</b>	<b>24290.1</b>	<b>14935.9</b>	<b>9354.2</b>	<b>22655.3</b>	<b>13952.7</b>	<b>8702.6</b>	<b>-4098.2</b>	<b>-2338.4</b>	<b>-1759.8</b>	<b>-2463.4</b>	<b>-1355.2</b>	<b>-1108.2</b>
VII.2014	4016.0	2636.7	1379.3	4397.0	2760.6	1636.4	4100.4	2576.8	1523.6	-381.0	-123.9	-257.1	-84.4	59.9	-144.3
VIII.2014	3801.9	2302.9	1499.0	4309.1	2465.1	1844.0	4002.5	2291.9	1710.6	-507.2	-162.2	-345.0	-200.6	11.0	-211.6
IX.2014	3919.0	2378.5	1540.5	4671.3	2752.6	1918.7	4335.2	2564.5	1770.7	-752.3	-374.1	-378.2	-416.2	-186.0	-230.2
<b>VII - IX.2014</b>	<b>11736.9</b>	<b>7318.1</b>	<b>4418.8</b>	<b>13377.4</b>	<b>7978.3</b>	<b>5399.1</b>	<b>12438.1</b>	<b>7433.2</b>	<b>5004.9</b>	<b>-1640.5</b>	<b>-660.2</b>	<b>-980.3</b>	<b>-701.2</b>	<b>-115.1</b>	<b>-586.1</b>
<b>I - VII.2014</b>	<b>31928.8</b>	<b>19915.6</b>	<b>12013.2</b>	<b>37667.5</b>	<b>22914.2</b>	<b>14753.3</b>	<b>35093.4</b>	<b>21385.9</b>	<b>13707.5</b>	<b>-5738.7</b>	<b>-2998.6</b>	<b>-2740.1</b>	<b>-3164.6</b>	<b>-1470.3</b>	<b>-1694.3</b>
I.2015	3390.3	2294.6	1095.7	3776.2	2312.2	1464.0	3499.0	2147.6	1351.4	-385.9	-17.6	-368.3	-108.7	147.0	-255.7
II.2015	3423.2	2166.6	1256.6	4110.8	2624.6	1486.2	3825.0	2447.5	1377.5	-687.6	-458.0	-229.6	-401.8	-280.9	-120.9
III.2015	3945.4	2421.5	1523.9	4436.4	2885.4	1551.0	4145.9	2697.0	1448.9	-491.0	-463.9	-27.1	-200.5	-275.5	75.0
<b>I - III.2015</b>	<b>10758.9</b>	<b>6882.7</b>	<b>3876.2</b>	<b>12323.4</b>	<b>7822.2</b>	<b>4501.2</b>	<b>11469.9</b>	<b>7292.1</b>	<b>4177.8</b>	<b>-1564.5</b>	<b>-939.5</b>	<b>-625.0</b>	<b>-711.0</b>	<b>-409.4</b>	<b>-301.6</b>
IV.2015	3902.8	2402.3	1500.5	4524.4	2866.3	1658.1	4204.8	2664.1	1540.7	-621.6	-464.0	-157.6	-302.0	-261.8	-40.2
V.2015	3735.4	2311.5	1423.9	4201.9	2594.5	1607.4	3923.7	2425.8	1497.9	-466.5	-283.0	-183.5	-188.3	-114.3	-74.0
VI.2015	4040.5	2577.2	1463.3	4436.8	2832.6	1604.2	4146.7	2649.6	1497.1	-396.3	-255.4	-140.9	-106.2	-72.4	-33.8
<b>IV - VI.2015</b>	<b>11678.7</b>	<b>7291.0</b>	<b>4387.7</b>	<b>13163.1</b>	<b>8293.4</b>	<b>4869.7</b>	<b>12275.2</b>	<b>7739.5</b>	<b>4535.7</b>	<b>-1484.4</b>	<b>-1002.4</b>	<b>-482.0</b>	<b>-596.5</b>	<b>-448.5</b>	<b>-148.0</b>
<b>I - VI.2015</b>	<b>22437.6</b>	<b>14173.7</b>	<b>8263.9</b>	<b>25486.5</b>	<b>16115.6</b>	<b>9370.9</b>	<b>23745.1</b>	<b>15031.6</b>	<b>8713.5</b>	<b>-3048.9</b>	<b>-1941.9</b>	<b>-1107.0</b>	<b>-1307.5</b>	<b>-857.9</b>	<b>-449.6</b>
VII.2015	4091.7	2633.7	1458.0	4758.0	3099.3	1658.7	4422.7	2882.0	1540.7	-666.3	-465.6	-200.7	-331.0	-248.3	-82.7
VIII.2015	3763.3	2456.8	1306.5	3817.9	2369.0	1448.9	3559.5	2215.3	1344.2	-54.6	87.8	-142.4	203.8	241.5	-37.7
IX.2015	3762.0	2485.0	1277.0	4099.3	2673.2	1426.1	3831.3	2500.2	1331.1	-337.3	-188.2	-149.1	-69.3	-15.2	-54.1
<b>VII - IX.2015</b>	<b>11617.0</b>	<b>7575.5</b>	<b>4041.5</b>	<b>12675.2</b>	<b>8141.5</b>	<b>4533.7</b>	<b>11813.5</b>	<b>7597.5</b>	<b>4216.0</b>	<b>-1058.2</b>	<b>-566.0</b>	<b>-492.2</b>	<b>-196.5</b>	<b>-22.0</b>	<b>-174.5</b>
<b>I - IX.2015</b>	<b>34054.6</b>	<b>21749.2</b>	<b>12305.4</b>	<b>38161.7</b>	<b>24257.1</b>	<b>13904.6</b>	<b>35558.6</b>	<b>22629.1</b>	<b>12929.5</b>	<b>-4107.1</b>	<b>-2507.9</b>	<b>-1599.2</b>	<b>-1504.0</b>	<b>-879.9</b>	<b>-624.1</b>

<sup>1</sup> Data are preliminary as of 9-th December 2015.

<sup>2</sup> By data of BNB for the transport costs.



**Table 2**

**Value changes of exports and imports of Bulgaria in the period January - September 2015<sup>1</sup> compared to the same period of the previous year**

(Per cent)

Months/Periods	Exports - FOB			Imports - CIF			Imports - FOB		
	Total	EU	Non-EU	Total	EU	Non-EU	Total	EU	Non-EU
I	9.4	16.4	-2.9	-4.5	-0.9	-9.8	-4.9	-1.1	-10.2
II	6.1	8.3	2.5	8.3	6.4	11.8	8.2	6.1	12.1
III	23.5	11.5	49.1	12.7	15.5	7.9	12.4	15.2	7.7
<b>I - III</b>	<b>13.0</b>	<b>12.0</b>	<b>14.8</b>	<b>5.4</b>	<b>7.2</b>	<b>2.5</b>	<b>5.2</b>	<b>6.9</b>	<b>2.4</b>
IV	12.5	13.4	11.1	5.1	9.0	-0.9	4.7	8.5	-1.4
V	6.8	11.9	-0.7	1.7	9.6	-9.0	1.7	9.6	-8.9
VI	9.1	13.5	2.1	6.4	7.2	5.1	6.8	7.5	5.7
<b>IV - VI</b>	<b>9.4</b>	<b>13.0</b>	<b>4.0</b>	<b>4.4</b>	<b>8.6</b>	<b>-1.9</b>	<b>4.4</b>	<b>8.5</b>	<b>-1.9</b>
<b>I - VI</b>	<b>11.1</b>	<b>12.5</b>	<b>8.8</b>	<b>4.9</b>	<b>7.9</b>	<b>0.2</b>	<b>4.8</b>	<b>7.7</b>	<b>0.1</b>
VII	1.9	-0.1	5.7	8.2	12.3	1.4	7.9	11.8	1.1
VIII	-1.0	6.7	-12.8	-11.4	-3.9	-21.4	-11.1	-3.3	-21.4
IX	-4.0	4.5	-17.1	-12.2	-2.9	-25.7	-11.6	-2.5	-24.8
<b>VII - IX</b>	<b>-1.0</b>	<b>3.5</b>	<b>-8.5</b>	<b>-5.2</b>	<b>2.0</b>	<b>-16.0</b>	<b>-5.0</b>	<b>2.2</b>	<b>-15.8</b>
<b>I - IX</b>	<b>6.7</b>	<b>9.2</b>	<b>2.4</b>	<b>1.3</b>	<b>5.9</b>	<b>-5.8</b>	<b>1.3</b>	<b>5.8</b>	<b>-5.7</b>

<sup>1</sup> Data are preliminary as of 9-th December 2015.



Table 3

**Exports, imports and trade balance by groups of countries and main partner countries<sup>1</sup> of Bulgaria in the period January - September 2014 and 2015<sup>2</sup>**

Countries and groups of countries	Exports - FOB			Imports - CIF			Trade balance - FOB/CIF	
	2014	2015	Change compared to the same period of the previous year - %	2014	2015	Change compared to the same period of the previous year - %	2014	2015
	Million BGN			Million BGN			Million BGN	
Total	31928.8	34054.6	6.7	37667.5	38161.7	1.3	-5738.7	-4107.1
EU	19915.6	21749.2	9.2	22914.2	24257.1	5.9	-2998.6	-2507.9
Austria	569.9	598.0	4.9	1047.2	1017.2	-2.9	-477.3	-419.2
Belgium	1347.6	1274.4	-5.4	781.9	847.9	8.4	565.7	426.5
Croatia	134.5	137.8	2.5	65.6	81.0	23.5	68.9	56.8
Cyprus	140.8	249.0	76.8	40.8	60.8	49.0	100.0	188.2
Czech Republic	445.2	566.2	27.2	859.0	806.4	-6.1	-413.8	-240.2
Denmark	150.9	176.7	17.1	155.1	173.7	12.0	-4.2	3.0
Estonia	26.6	30.1	13.2	25.0	15.8	-36.8	1.6	14.3
Finland	105.1	89.2	-15.1	71.0	80.7	13.7	34.1	8.5
France	1390.5	1426.0	2.6	1139.6	1182.0	3.7	250.9	244.0
Germany	3896.7	4279.4	9.8	4375.3	4890.4	11.8	-478.6	-611.0
Greece	2111.3	2171.1	2.8	1858.8	1800.3	-3.1	252.5	370.8
Hungary	441.7	527.9	19.5	1247.3	1382.3	10.8	-805.6	-854.4
Ireland	34.4	34.5	0.3	116.2	120.5	3.7	-81.8	-86.0
Italy	2884.1	3175.0	10.1	2654.3	2803.6	5.6	229.8	371.4
Latvia	37.0	35.6	-3.8	13.4	36.4	171.6	23.6	-0.8
Lithuania	68.3	65.4	-4.2	58.6	60.1	2.6	9.7	5.3
Luxembourg	4.2	4.9	16.7	103.7	118.3	14.1	-99.5	-113.4
Malta	51.2	76.7	49.8	135.3	14.4	-89.4	-84.1	62.3
Netherlands	738.0	766.7	3.9	1003.2	1235.7	23.2	-265.2	-469.0
Poland	633.9	749.7	18.3	1063.8	1154.2	8.5	-429.9	-404.5
Portugal	134.7	126.8	-5.9	73.3	83.8	14.3	61.4	43.0
Romania	2574.3	2770.7	7.6	2616.2	2600.3	-0.6	-41.9	170.4
Slovakia	233.4	260.3	11.5	428.8	533.6	24.4	-195.4	-273.3
Slovenia	159.1	246.7	55.1	247.0	252.3	2.1	-87.9	-5.6
Spain	632.3	806.6	27.6	1828.6	1874.1	2.5	-1196.3	-1067.5
Sweden	209.0	216.1	3.4	217.9	226.9	4.1	-8.9	-10.8
United Kingdom	702.1	836.4	19.1	653.0	679.6	4.1	49.1	156.8
Not specified	58.8	51.3	-12.8	34.3	124.8	263.8	24.5	-73.5

<sup>1</sup> Partner country:

- In case of exports (or dispatches) is the country (or Member State) of final destination of the goods.
- In case of imports (or arrivals) is the country (or Member State) of consignment of the goods.

<sup>2</sup> Data are preliminary as of 9-th December 2015.



Table 3

**Exports, imports and trade balance by groups of countries and main partner countries<sup>1</sup> of Bulgaria in the period January - September 2014 and 2015<sup>2</sup>**

(Continued)

Continued)

Countries and groups of countries	Exports - FOB			Imports - CIF			Trade balance - FOB/CIF	
	2014	2015	Change compared to the same period of the previous year - %	2014	2015	Change compared to the same period of the previous year - %	2014	2015
	Million BGN			Million BGN			Million BGN	
Non EU countries	12013.2	12305.4	2.4	14753.3	13904.6	-5.8	-2740.1	-1599.2
CIS <sup>3</sup>	1304.0	1129.1	-13.4	6931.4	5451.3	-21.4	-5627.4	-4322.2
of which:								
Kazakhstan	42.4	32.4	-23.6	55.2	39.2	-29.0	-12.8	-6.8
Russian Federation	751.4	573.7	-23.6	5904.7	4598.8	-22.1	-5153.3	-4025.1
Ukraine	215.2	280.8	30.5	830.9	699.6	-15.8	-615.7	-418.8
OECD <sup>4</sup>	4116.9	4316.3	4.8	3309.5	3487.0	5.4	807.4	829.3
of which:								
Canada	52.1	69.3	33.0	32.6	40.0	22.7	19.5	29.3
Israel	158.4	121.5	-23.3	103.6	57.1	-44.9	54.8	64.4
Japan	41.6	60.2	44.7	123.9	119.9	-3.2	-82.3	-59.7
Korea, Republic of	126.8	87.6	-30.9	124.2	122.7	-1.2	2.6	-35.1
Turkey	2989.3	3058.9	2.3	2156.0	2168.1	0.6	833.3	890.8
United States	436.0	553.8	27.0	439.7	367.3	-16.5	-3.7	186.5
EFTA <sup>5</sup>	238.3	251.0	5.3	281.8	302.0	7.2	-43.5	-51.0
of which:								
Norway	51.5	51.1	-0.8	26.4	23.0	-12.9	25.1	28.1
Switzerland	183.9	198.0	7.7	254.3	275.9	8.5	-70.4	-77.9

<sup>1</sup> Partner country:

- In case of exports (or dispatches) is the country (or Member State) of final destination of the goods.
- In case of imports (or arrivals) is the country (or Member State) of consignment of the goods.

<sup>2</sup> Data are preliminary as of 9-th December 2015.

<sup>3</sup> CIS includes: Azerbaijan; Armenia; Belarus; Kazakhstan; Kyrgyz, Republic; Moldova, Republic of; Russian Federation; Tajikistan; Turkmenistan; Uzbekistan and Ukraine.

<sup>4</sup> OECD includes: Australia; Virgin Islands (US); United States; Iceland; Canada; Mexico; New Zealand; Norway; Korea, Republic of; Turkey; Switzerland; Japan; Israel and Chile.

<sup>5</sup> EFTA includes: Norway; Switzerland; Iceland and Liechtenstein.



Table 3

**Exports, imports and trade balance by groups of countries and main partner countries<sup>1</sup> of Bulgaria in the period January - September 2014 and 2015<sup>2</sup>**

(Continued and end)

Continued and end)

Countries and groups of countries	Exports - FOB			Imports - CIF			Trade balance - FOB/CIF	
	2014	2015	Change compared to the same period of the previous year - %	2014	2015	Change compared to the same period of the previous year - %	2014	2015
	Million BGN			Million BGN			Million BGN	
Countries not included in the upper groups								
Albania	79.7	88.9	11.5	22.9	25.8	12.7	56.8	63.1
Bosnia and Herzegovina	57.8	90.0	55.7	54.5	45.9	-15.8	3.3	44.1
Brazil	19.6	41.2	110.2	74.6	49.0	-34.3	-55.0	-7.8
China	748.4	850.3	13.6	1252.5	1411.7	12.7	-504.1	-561.4
Egypt	291.6	493.2	69.1	218.7	112.2	-48.7	72.9	381.0
Former Yugoslav Republic of Macedonia	523.5	550.1	5.1	382.7	393.6	2.8	140.8	156.5
Georgia	281.5	241.0	-14.4	337.4	351.0	4.0	-55.9	-110.0
India	65.3	81.7	25.1	158.6	206.4	30.1	-93.3	-124.7
Indonesia	43.0	41.9	-2.6	47.5	52.3	10.1	-4.5	-10.4
Iran, Islamic Republic of	107.3	208.8	94.6	16.9	7.9	-53.3	90.4	200.9
Peru	5.4	4.6	-14.8	31.9	24.5	-23.2	-26.5	-19.9
Serbia	526.4	604.0	14.7	461.5	536.7	16.3	64.9	67.3
Singapore	881.8	573.0	-35.0	28.1	39.1	39.1	853.7	533.9
South Africa	62.5	70.7	13.1	31.7	17.1	-46.1	30.8	53.6
Syrian Arab Republic	121.5	41.0	-66.3	31.2	14.7	-52.9	90.3	26.3
Taiwan	28.8	34.9	21.2	130.2	168.8	29.6	-101.4	-133.9
United Arab Emirates	386.3	311.8	-19.3	61.0	126.4	107.2	325.3	185.4
Viet Nam	24.7	53.6	117.0	67.4	71.3	5.8	-42.7	-17.7

<sup>1</sup> Partner country:

- In case of exports (or dispatches) is the country (or Member State) of final destination of the goods.
- In case of imports (or arrivals) is the country (or Member State) of consignment of the goods.

<sup>2</sup> Data are preliminary as of 9-th December 2015.

Table 4

**Exports, imports and trade balance of Bulgaria by sections of SITC, rev.4 in the period January - September 2014 and 2015<sup>1</sup>**

Sections by SITC	Exports - FOB			Imports - CIF			Trade balance - FOB/CIF	
	2014	2015	Change compared to the same period of the previous year - %	2014	2015	Change compared to the same period of the previous year - %	2014	2015
	Million BGN			Million BGN			Million BGN	
Total	31928.8	34054.6	6.7	37667.5	38161.7	1.3	-5738.7	-4107.1
of which EU	19915.6	21749.2	9.2	22914.2	24257.1	5.9	-2998.6	-2507.9
Food and live animals	3189.2	3472.7	8.9	2694.3	2904.8	7.8	494.9	567.9
of which EU	2133.1	2306.6	8.1	2259.0	2317.3	2.6	-125.9	-10.7
Beverages and tobacco	631.1	611.3	-3.1	482.2	516.4	7.1	148.9	94.9
of which EU	222.4	210.5	-5.4	330.2	404.5	22.5	-107.8	-194.0
Crude materials, inedible (except fuel)	2324.1	2264.2	-2.6	3136.9	3413.6	8.8	-812.8	-1149.4
of which EU	1384.5	1392.9	0.6	1914.3	1937.8	1.2	-529.8	-544.9
Mineral fuel, lubricants and related materials	4204.3	3810.7	-9.4	7720.9	6123.0	-20.7	-3516.6	-2312.3
of which EU	910.8	1100.5	20.8	1417.7	1067.9	-24.7	-506.9	32.6
Animals and vegetable oils, fats and waxes	285.8	353.3	23.6	142.2	124.9	-12.2	143.6	228.4
of which EU	230.2	254.3	10.5	110.7	86.7	-21.7	119.5	167.6
Chemical and related products n.e.c.	2908.9	3373.5	16.0	4933.3	5439.3	10.3	-2024.4	-2065.8
of which EU	1567.7	1912.0	22.0	3796.9	4170.5	9.8	-2229.2	-2258.5
Manufactured goods classified chiefly by material	7265.8	7742.5	6.6	6388.7	6456.5	1.1	877.1	1286.0
of which EU	4834.5	5306.5	9.8	3800.1	4027.5	6.0	1034.4	1279.0
Machinery and transport equipment	6236.1	7108.5	14.0	9304.8	9987.8	7.3	-3068.7	-2879.3
of which EU	4588.4	5127.1	11.7	7156.6	7916.1	10.6	-2568.2	-2789.0
Miscellaneous manufactured articles	4802.9	5226.8	8.8	2667.4	2987.6	12.0	2135.5	2239.2
of which EU	3991.7	4072.4	2.0	1959.3	2142.7	9.4	2032.4	1929.7
Commodities and transactions n.e.c.	80.6	91.1	13.0	196.8	207.8	5.6	-116.2	-116.7
of which EU	52.3	66.4	27.0	169.4	186.1	9.9	-117.1	-119.7

<sup>1</sup>Data are preliminary as of 9-th December 2015.