

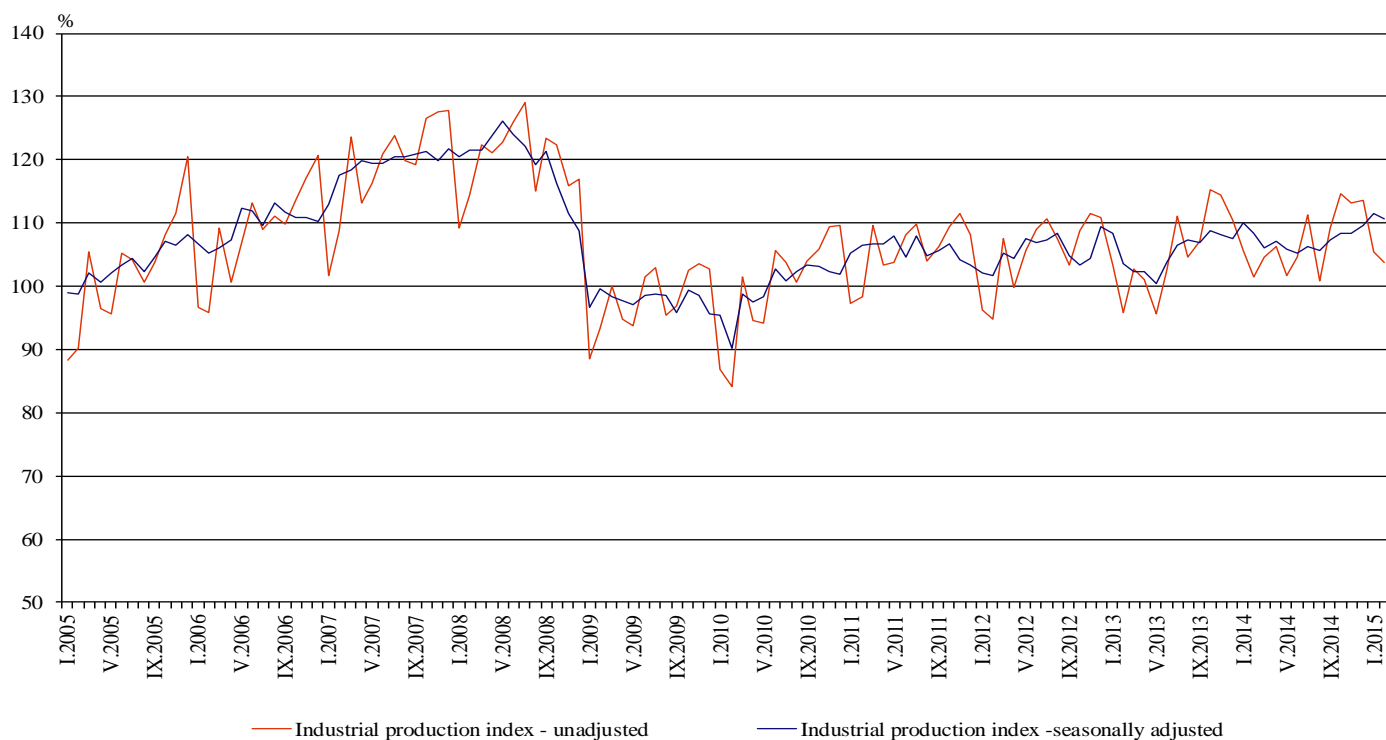


INDUSTRIAL PRODUCTION INDICES IN FEBRUARY 2015¹

According to the preliminary data the Industrial Production Index², seasonally adjusted³, decreased by 0.6% in February 2015 as compared to January 2015.

In February 2015 working day adjusted⁴ Industrial Production Index rose by 2.3% in comparison with the same month of 2014.

Figure 1. Industrial Production Indices (2010 = 100)



¹ February 2015 data are preliminary.

² Monthly Industrial Production and Industrial turnover indices measure changes in production and turnover values of industrial enterprises. This information can be used to assess the current economic development and for short-term forecasts. Indices do not measure the actual production level, it aims to measure the average change in value of production between two points of time. Indices are compiled on the basis of information collected through representative sampling survey on industrial enterprises. The sample covers enterprises with annual turnover more than 97% of total turnover in industry.

Industrial production indices are calculated at constant base year that is to say they are weighted with the structure of the value added at factor costs in the base year.

³ Seasonal adjustment is a statistical method, which eliminates the seasonal component of time series.

⁴ Working day adjustment is an adjustment for variations caused by calendar effects, different number of calendar and working days in the months, national holidays and outliers (for example the presence of more non-working days in May could contribute to the decline in the production in some activities).

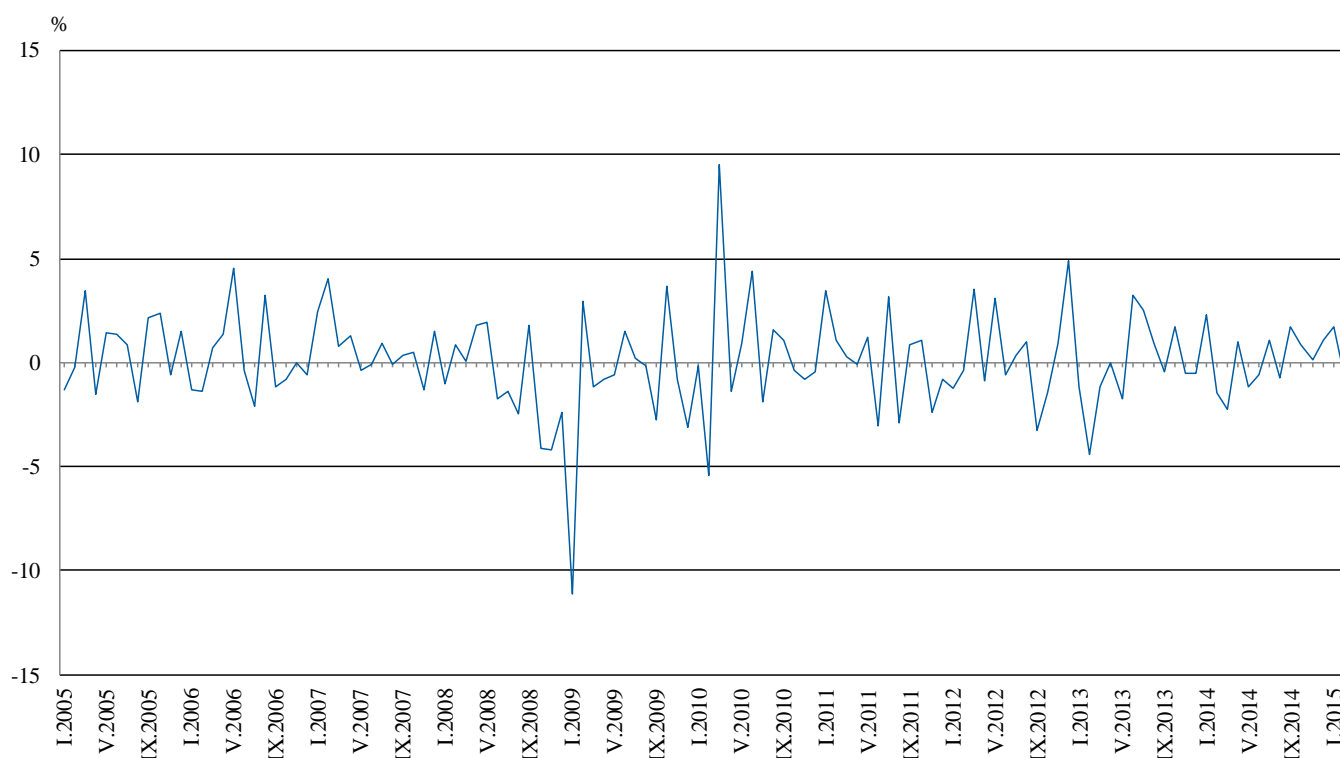


Monthly comparisons

In February 2015 as compared to January 2015, the seasonally adjusted Industrial Production Index decreased in the electricity, gas, steam and air conditioning supply by 5.0%, while increases were seen in the mining and quarrying industry by 1.5% and in the manufacturing by 0.4%.

The most significant increases of production in the manufacturing were registered in the manufacture of computer, electronic and optical products by 13.0%, in the manufacture of furniture by 5.3%, in the manufacture of wood and of products of wood and cork, except furniture; manufacture of articles of straw and plaiting materials by 3.8%, in the manufacture of tobacco products by 3.2%. There were decreases in the manufacture of other transport equipment by 22.0%, in the manufacture of chemicals and chemical products by 11.5%, in the manufacture of basic pharmaceutical products and pharmaceutical preparations by 9.7%, in the manufacture of textiles by 8.7%, in the manufacture of leather and related products by 5.3%.

**Figure 2. Changes of Industrial Production Indices compared to the previous month
(Seasonally adjusted)**



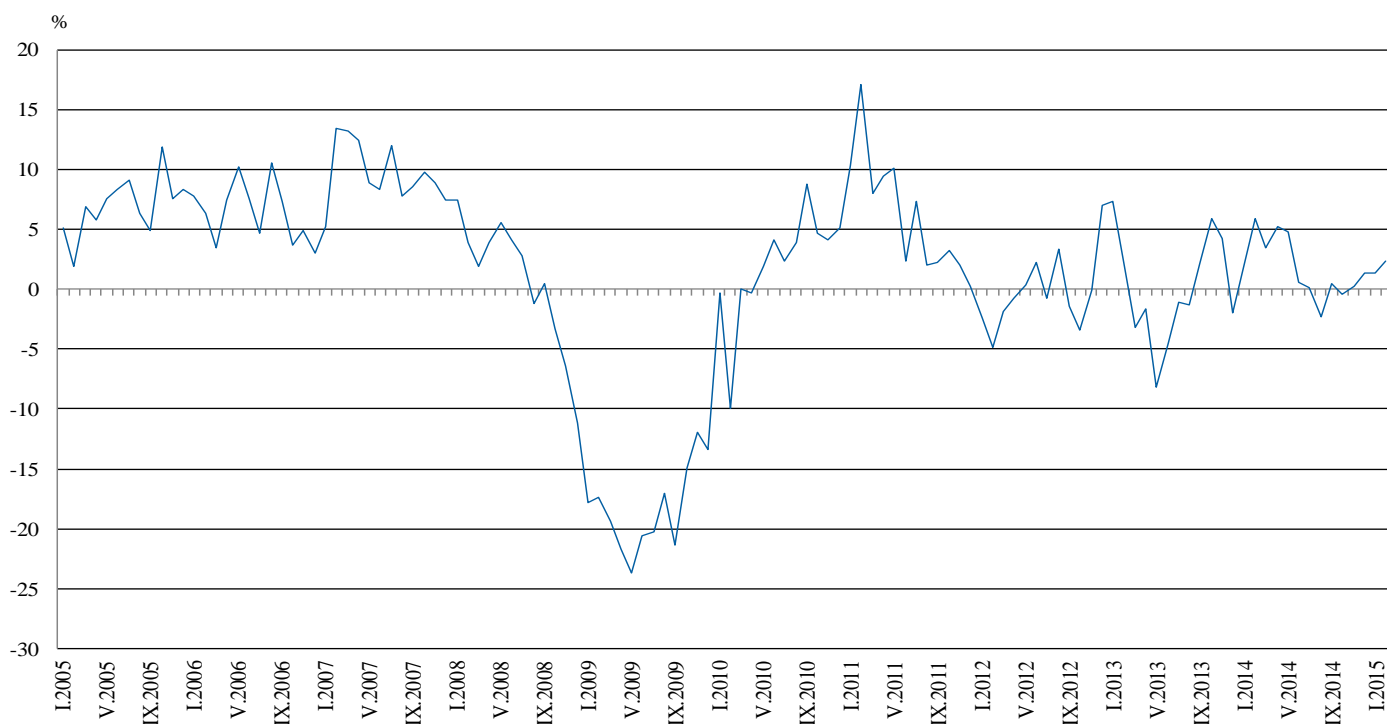


Annual comparisons

On annual basis in February 2015 Industrial Production Index calculated from working day adjusted data increased in the mining and quarrying industry by 5.9% and in the manufacturing by 3.5%, while a decrease was seen in the electricity, gas, steam and air conditioning supply by 2.1%.

In the manufacturing, the more significant increases compared to the same month of the previous year were seen in the manufacture of motor vehicles, trailers and semi-trailers by 22.2%, in the manufacture of computer, electronic and optical products by 21.8%, in the repair and installation of machinery and equipment by 14.1%, in the manufacture of fabricated metal products, except machinery and equipment 12.4%, in the manufacture of food products by 9.7%. Decreases were registered in the manufacture of wearing apparel by 8.5%, in the manufacture of textiles by 7.0%, in the manufacture of tobacco products by 6.9%, in the manufacture of other non-metallic mineral products by 4.8%.

Figure 3. Changes of Industrial Production Indices compared to the same month of the previous year (Working day adjusted)



The final data on Industrial Production and Turnover Indices for January 2015 can be found on the NSI website: <http://www.nsi.bg/en>.



Annex

Table 1
Changes of Industrial Production Indices compared to the previous month¹

Economic Activities	NACE.BG - 2008	2014				2015	
		IX	X	XI	XII	I	II
Industry	B_TO_E36	1.7	0.8	0.2	1.0	1.7	-0.6
Mining and quarrying	B	-4.2	2.6	1.9	3.1	0.7	1.5
of which:							
Mining of coal and lignite	B05	2.5	4.5	-3.4	2.4	12.3	-0.2
Mining of metal ores	B07	-8.4	13.2	4.1	0.8	-17.9	5.5
Other mining and quarrying	B08	-0.3	3.3	-0.1	-1.5	-5.3	-2.5
Manufacturing	C	1.9	0.0	0.0	1.0	0.8	0.4
of which:							
Manufacture of food products	C10	-1.0	1.9	2.6	-1.2	2.6	2.9
Manufacture of beverages	C11	-5.9	-3.8	3.1	4.9	5.2	1.8
Manufacture of tobacco products	C12	5.4	7.2	-1.6	4.6	-9.4	3.2
Manufacture of textiles	C13	-0.1	1.8	-3.9	6.0	-2.8	-8.7
Manufacture of wearing apparel	C14	-3.0	1.4	-3.1	-0.8	2.1	-3.3
Manufacture of leather and related products	C15	-4.6	4.7	12.3	-6.3	-5.5	-5.3
Manufacture of wood and of products of wood and cork, except furniture; manufacture of articles of straw and plaiting materials	C16	-8.4	9.3	-6.1	4.7	2.3	3.8
Manufacture of paper and paper products	C17	2.2	2.1	-1.4	-2.8	3.1	-2.2
Printing and reproduction of recorded media	C18	7.4	1.8	3.8	-2.9	5.2	2.1
Manufacture of chemicals and chemical products	C20	4.8	16.2	-15.6	-0.2	3.6	-11.5
Manufacture of basic pharmaceutical products and pharmaceutical preparations	C21	9.0	6.0	-1.2	9.9	0.9	-9.7
Manufacture of rubber and plastic products	C22	0.8	2.6	-3.7	-1.2	10.9	-0.8
Manufacture of other non-metallic mineral products	C23	-3.6	0.8	2.4	3.3	-2.6	0.4
Manufacture of basic metals	C24	-3.5	0.4	-8.8	12.1	2.7	-3.1
Manufacture of fabricated metal products, except machinery and equipment	C25	15.5	-9.2	5.3	-2.8	4.4	1.9
Manufacture of computer, electronic and optical products	C26	3.3	7.8	-5.8	-3.7	5.1	13.0
Manufacture of electrical equipment	C27	4.2	4.6	-1.0	-1.7	8.6	-0.3
Manufacture of machinery and equipment n.e.c.	C28	6.4	-3.5	9.4	-12.2	12.2	-2.6
Manufacture of motor vehicles, trailers and semi-trailers	C29	9.3	7.1	-1.8	2.7	1.4	2.7
Manufacture of other transport equipment	C30	14.1	12.2	-0.4	-1.0	45.8	-22.0
Manufacture of furniture	C31	-6.2	0.9	-0.4	-5.8	7.8	5.3
Other manufacturing	C32	-2.2	-6.0	5.4	-0.9	19.6	-13.6
Repair and installation of machinery and equipment	C32	3.9	-8.6	23.6	-26.7	26.6	-4.8
Electricity, gas, steam and air conditioning supply	D	4.1	2.9	0.0	0.2	5.0	-5.0
Electricity, gas, steam and air conditioning supply	D35	4.1	2.9	0.0	0.2	5.0	-5.0

¹ Seasonally adjusted.



Table 2

Changes of Industrial Production Indices compared to the same month of the previous year¹
(Per cent)

Economic Activities	NACE.BG - 2008	2014				2015	
		IX	X	XI	XII	I	II
Industry	B_TO_E36	0.5	-0.5	0.3	1.4	1.3	2.3
Mining and quarrying	B	-6.9	-16.9	-9.7	-4.1	-10.4	5.9
of which:							
Mining of coal and lignite	B05	-0.1	-9.2	-4.9	-14.3	0.6	15.3
Mining of metal ores	B07	-12.3	-23.9	-14.4	0.1	-18.2	0.5
Other mining and quarrying	B08	6.5	10.6	15.6	31.5	2.6	4.5
Manufacturing	C	5.3	3.2	2.6	5.5	5.2	3.5
of which:							
Manufacture of food products	C10	-1.7	-2.2	-3.2	2.0	4.5	9.7
Manufacture of beverages	C11	-13.5	-13.3	-10.7	-5.5	9.6	-0.8
Manufacture of tobacco products	C12	-4.1	20.1	18.7	13.8	-8.5	-6.9
Manufacture of textiles	C13	6.1	12.1	10.1	18.9	5.0	-7.0
Manufacture of wearing apparel	C14	-2.3	2.8	-11.4	-7.9	-5.8	-8.5
Manufacture of leather and related products	C15	-2.0	3.3	24.0	19.0	3.1	-2.2
Manufacture of wood and of products of wood and cork, except furniture; manufacture of articles of straw and plaiting materials	C16	-7.7	3.2	-11.3	2.9	-11.0	-3.5
Manufacture of paper and paper products	C17	2.8	2.0	-1.9	-0.7	-2.7	-2.6
Printing and reproduction of recorded media	C18	0.9	8.4	18.4	4.2	2.7	8.5
Manufacture of chemicals and chemical products	C20	29.9	33.9	8.2	11.8	21.4	1.7
Manufacture of basic pharmaceutical products and pharmaceutical preparations	C21	-5.1	7.0	2.1	18.5	10.6	-1.9
Manufacture of rubber and plastic products	C22	9.1	14.0	6.9	4.1	12.2	5.6
Manufacture of other non-metallic mineral products	C23	-1.4	0.1	2.9	7.2	3.8	-4.8
Manufacture of basic metals	C24	0.5	-2.4	-15.9	7.9	0.3	-0.9
Manufacture of fabricated metal products, except machinery and equipment	C25	27.0	-6.0	7.6	24.9	10.5	12.4
Manufacture of computer, electronic and optical products	C26	11.5	2.2	1.1	20.5	-4.0	21.8
Manufacture of electrical equipment	C27	5.1	12.5	7.4	9.7	11.7	9.3
Manufacture of machinery and equipment n.e.c.	C28	9.6	2.8	14.4	-8.5	5.7	7.5
Manufacture of motor vehicles, trailers and semi- trailers	C29	27.7	40.1	32.1	50.6	14.0	22.2
Manufacture of other transport equipment	C30	-0.5	-6.6	-4.0	6.1	76.2	11.0
Manufacture of furniture	C31	3.6	1.9	1.0	-1.5	1.2	8.9
Other manufacturing	C32	7.2	-10.8	-7.6	10.0	19.0	-0.8
Repair and installation of machinery and equipment	C33	22.3	1.9	45.9	-7.0	19.7	14.1
Electricity, gas, steam and air conditioning supply	D	-10.7	-3.0	-1.7	-4.5	-3.4	-2.1
Electricity, gas, steam and air conditioning supply	D35	-10.7	-3.0	-1.7	-4.5	-3.4	-2.1

¹ Working day adjusted.



Table 3

**Industrial Production Indices
(Seasonally adjusted, 2010 = 100)**

NACE.BG - 2008	2014											2015	
	II	III	IV	V	VI	VII	VIII	IX	X	XI	XII	I	II
B_TO_E36	108.4	106.0	107.0	105.8	105.2	106.3	105.6	107.4	108.3	108.4	109.6	111.4	110.7
B	97.4	92.7	100.3	98.9	96.3	94.9	97.4	93.3	95.7	97.5	100.5	101.2	102.7
B05	104.0	87.3	112.1	111.8	89.0	92.3	98.2	100.6	105.2	101.6	104.0	116.8	116.5
B07	88.8	91.4	88.6	88.6	101.4	96.3	94.7	86.7	98.1	102.1	103.0	84.6	89.2
B08	100.1	105.4	113.7	103.2	104.2	111.4	112.6	112.3	115.9	115.9	114.2	108.1	105.5
C	110.7	107.9	109.7	108.1	107.8	110.0	109.2	111.3	111.3	111.3	112.5	113.4	113.9
C10	88.5	91.3	92.5	87.4	88.2	89.9	89.8	88.9	90.6	92.9	91.8	94.2	97.0
C11	105.9	103.3	103.2	94.8	93.8	95.2	97.9	92.1	88.6	91.3	95.9	100.8	102.6
C12	119.9	110.6	114.3	101.6	88.9	106.8	103.5	109.0	116.9	115.0	120.3	109.0	112.4
C13	106.9	111.9	108.4	108.1	103.2	110.0	110.7	110.6	112.5	108.2	114.7	111.6	101.8
C14	99.1	100.6	98.4	102.2	97.5	97.0	99.4	96.4	97.8	94.8	94.0	96.0	92.7
C15	76.9	74.2	75.6	73.7	75.3	76.5	81.3	77.6	81.2	91.2	85.4	80.8	76.5
C16	107.3	99.9	97.6	100.1	98.2	102.3	98.7	90.4	98.8	92.7	97.1	99.4	103.1
C17	120.6	115.0	118.5	116.2	117.8	119.9	116.9	119.5	122.0	120.3	117.0	120.6	117.9
C18	106.9	108.8	106.6	106.8	103.7	105.1	96.7	103.9	105.8	109.8	106.6	112.2	114.5
C20	97.5	98.9	108.9	106.3	105.1	97.8	106.2	111.3	129.3	109.1	108.9	112.8	99.9
C21	138.4	130.5	142.5	132.6	129.9	136.6	121.4	132.2	140.2	138.5	152.2	153.6	138.6
C22	129.5	127.0	128.3	125.1	127.9	129.9	125.3	126.3	129.6	124.8	123.3	136.8	135.6
C23	122.7	113.4	117.6	116.4	107.8	115.8	115.9	111.7	112.6	115.4	119.2	116.1	116.6
C24	106.2	104.0	100.4	103.0	106.3	106.1	105.8	102.1	102.5	93.5	104.8	107.6	104.4
C25	115.3	104.0	115.9	103.4	111.8	119.4	113.0	130.4	118.4	124.7	121.2	126.6	129.0
C26	127.5	137.8	127.2	133.3	128.2	144.5	127.4	131.6	141.8	133.6	128.6	135.1	152.7
C27	129.2	126.4	127.1	125.8	123.0	124.8	121.0	126.0	131.9	130.6	128.3	139.3	138.9
C28	139.2	135.2	148.1	135.7	135.4	137.8	138.8	147.7	142.6	156.0	137.0	153.6	149.7
C29	131.0	132.3	129.4	128.8	132.0	134.4	129.7	141.7	151.8	149.0	153.0	155.1	159.3
C30	86.7	85.5	104.9	74.4	74.4	97.5	64.5	73.6	82.6	82.3	81.5	118.8	92.7
C31	124.0	120.2	122.0	123.0	121.3	125.7	132.2	124.0	125.1	124.7	117.5	126.6	133.4
C32	152.4	160.0	160.3	134.0	146.1	162.1	153.3	150.0	141.0	148.6	147.3	176.1	152.2
C33	82.1	78.2	77.8	79.1	84.5	88.0	89.9	93.4	85.4	105.6	77.4	98.0	93.4
D	108.7	107.6	103.9	103.7	103.3	102.4	100.0	104.1	107.0	107.0	107.2	112.5	106.9
D35	108.7	107.6	103.9	103.7	103.3	102.4	100.0	104.1	107.0	107.0	107.2	112.5	106.9



Table 4

Industrial Production Indices
(Working day adjusted, 2010 = 100)

NACE.BG - 2008	2012	2013	2014												2015	
	II	II	II	III	IV	V	VI	VII	VIII	IX	X	XI	XII	I	II	
B_TO_E36	93.8	96.1	101.7	106.8	105.4	101.0	105.3	109.9	102.4	107.6	113.3	115.6	113.5	106.2	104.1	
B	96.2	90.1	89.3	86.8	92.9	92.6	91.1	93.9	96.1	95.4	111.8	107.7	110.7	98.1	94.6	
B05	106.1	87.8	99.6	78.1	94.9	95.9	66.0	81.4	94.1	105.6	134.2	115.6	124.8	132.4	114.9	
B07	86.9	95.4	88.8	91.4	88.6	88.6	101.4	96.3	94.7	86.7	98.1	102.1	103.0	84.6	89.2	
B08	61.3	73.0	70.0	94.5	113.3	108.8	113.6	125.4	125.7	125.2	136.5	131.2	116.1	68.3	73.2	
C	86.4	92.8	98.7	107.0	111.9	108.2	113.2	117.9	107.0	114.3	118.0	117.5	108.5	99.1	102.2	
C10	83.5	75.2	76.1	90.1	89.1	85.6	90.6	91.3	92.6	96.1	99.7	99.5	96.0	78.8	83.5	
C11	60.3	63.1	70.6	97.9	103.3	106.0	115.3	117.1	123.3	100.2	77.0	81.8	101.5	63.4	70.1	
C12	93.1	96.1	95.6	115.1	116.8	112.1	103.5	128.2	104.7	121.5	112.3	108.0	119.0	79.1	88.9	
C13	82.8	91.2	103.3	128.2	120.9	121.5	114.2	114.4	89.6	106.1	112.2	110.2	100.4	97.4	96.1	
C14	89.9	99.4	98.9	99.7	93.3	95.9	101.7	108.2	103.0	91.3	93.7	95.0	93.1	98.7	90.6	
C15	81.5	71.7	74.9	73.7	63.9	63.0	78.9	91.2	82.2	83.7	84.7	93.4	79.5	81.5	73.3	
C16	70.2	78.5	88.8	95.8	95.2	100.4	107.3	114.3	101.7	97.5	111.3	101.7	89.1	79.3	85.7	
C17	81.5	109.1	113.8	119.1	122.9	120.0	123.8	127.9	117.6	120.7	118.9	116.4	110.4	113.3	110.8	
C18	82.1	86.7	95.1	105.4	104.8	105.6	104.5	104.7	93.5	106.9	113.6	120.3	121.1	96.0	103.2	
C20	100.0	90.7	91.4	109.1	113.2	107.1	109.2	97.8	99.7	111.3	127.4	112.9	107.5	105.0	93.0	
C21	120.7	134.2	142.3	132.6	147.2	131.1	137.9	128.1	108.2	132.5	151.9	143.1	157.1	137.0	139.7	
C22	77.0	97.3	111.4	126.3	127.9	126.4	139.1	143.8	127.2	135.0	144.0	130.5	105.8	115.2	117.6	
C23	60.8	87.1	100.8	109.6	124.6	126.7	115.6	125.5	123.3	120.5	126.1	125.2	101.0	81.8	95.9	
C24	97.6	89.9	103.8	99.2	108.0	107.5	103.2	126.0	100.4	94.3	115.5	97.9	79.5	112.6	102.9	
C25	87.1	85.1	101.9	105.5	115.0	100.6	118.9	124.7	110.7	134.4	124.0	134.8	136.7	94.3	114.5	
C26	110.9	133.9	115.9	142.8	124.4	133.8	133.7	146.4	111.4	134.1	144.2	141.8	147.5	119.4	141.2	
C27	100.7	112.7	121.4	127.1	128.9	119.3	132.3	130.7	105.6	127.0	144.7	144.5	120.1	130.5	132.6	
C28	116.7	124.8	132.9	145.2	151.7	134.4	145.2	144.5	125.1	150.1	146.5	166.2	129.5	135.4	142.9	
C29	74.8	96.7	125.3	139.5	133.4	129.5	140.8	134.9	108.6	143.7	163.5	164.9	135.1	150.4	153.1	
C30	88.3	81.9	77.3	90.4	113.3	87.7	85.3	105.2	49.7	63.3	78.1	74.6	85.4	95.1	85.9	
C31	83.5	109.7	108.3	118.2	116.1	120.6	126.6	129.3	136.4	128.2	138.3	135.8	120.0	106.7	117.9	
C32	87.2	126.1	131.5	162.1	157.2	134.7	165.8	164.9	156.6	159.4	164.1	156.3	125.8	147.1	130.5	
C33	83.1	72.1	70.3	76.6	70.3	72.0	85.1	86.4	90.0	98.1	90.9	122.9	105.2	69.5	80.2	
D	117.0	110.8	119.7	117.5	93.8	84.3	88.4	94.0	90.4	92.5	101.9	116.3	134.1	134.5	117.1	
D35	117.0	110.8	119.7	117.5	93.8	84.3	88.4	94.0	90.4	92.5	101.9	116.3	134.1	134.5	117.1	