

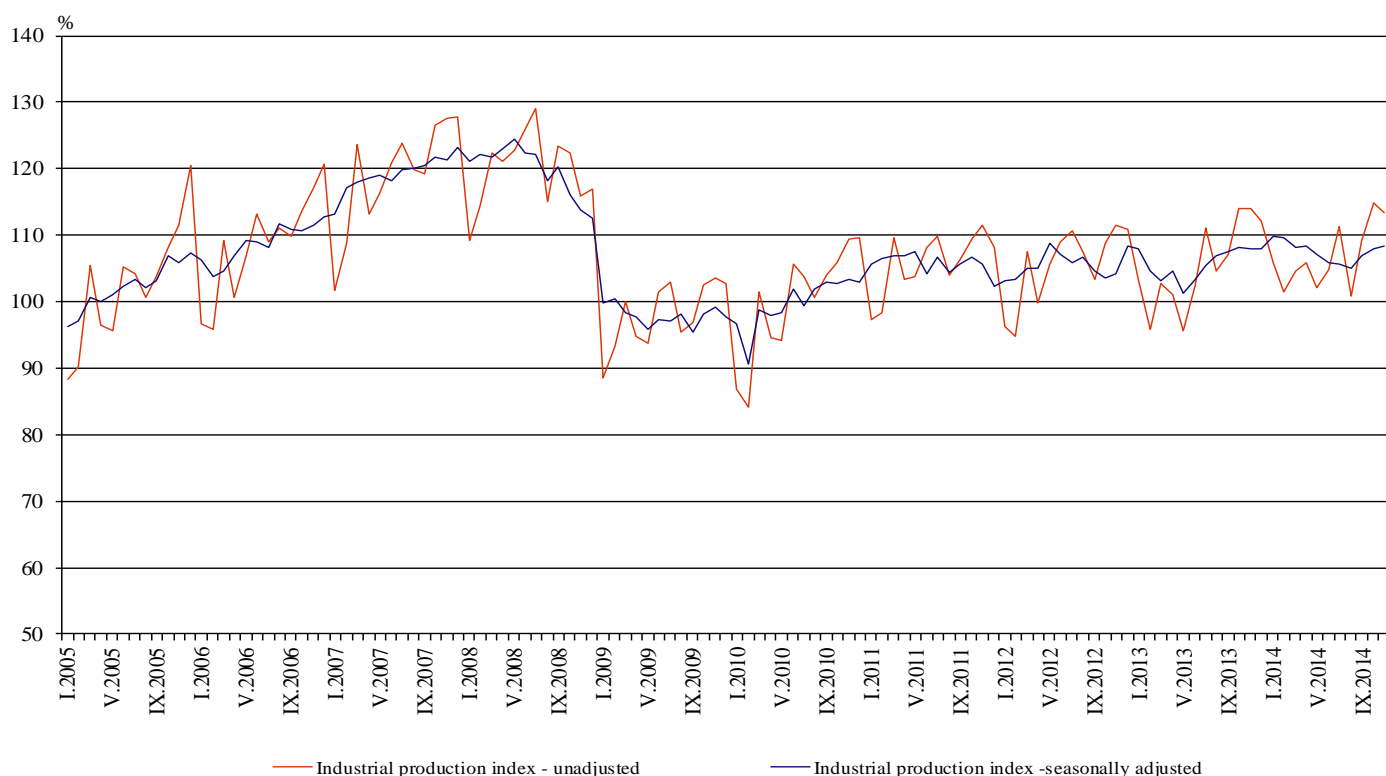


INDUSTRIAL PRODUCTION INDICES IN NOVEMBER 2014¹

According to the preliminary data the Industrial Production Index², seasonally adjusted³, increased by 0.4% in November 2014 as compared to October 2014.

In November 2014 working day adjusted⁴ Industrial Production Index rose by 0.9% in comparison with the same month of 2013.

Figure 1. Industrial Production Indices (2010 = 100)



¹ November 2014 data are preliminary.

² Monthly Industrial Production and Industrial turnover indices measure changes in production and turnover values of industrial enterprises. This information can be used to assess the current economic development and for short-term forecasts. Indices do not measure the actual production level, it aims to measure the average change in value of production between two points of time. Indices are compiled on the base of information collected through representative sampling survey on industrial enterprises. The sample covers enterprises with annual turnover more than 97% of total turnover in industry.

Industrial production indices are calculated at constant base year that is to say they are weighted with the structure of the value added at factor costs in the base year.

³ Seasonal adjustment is a statistical method, which eliminates the seasonal component of time series.

⁴ Working day adjustment is an adjustment for variations caused by calendar effects, different number of calendar and working days in the months, national holidays and outliers (for example the presence of more non-working days in May could contribute to the decline in the production in some activities).

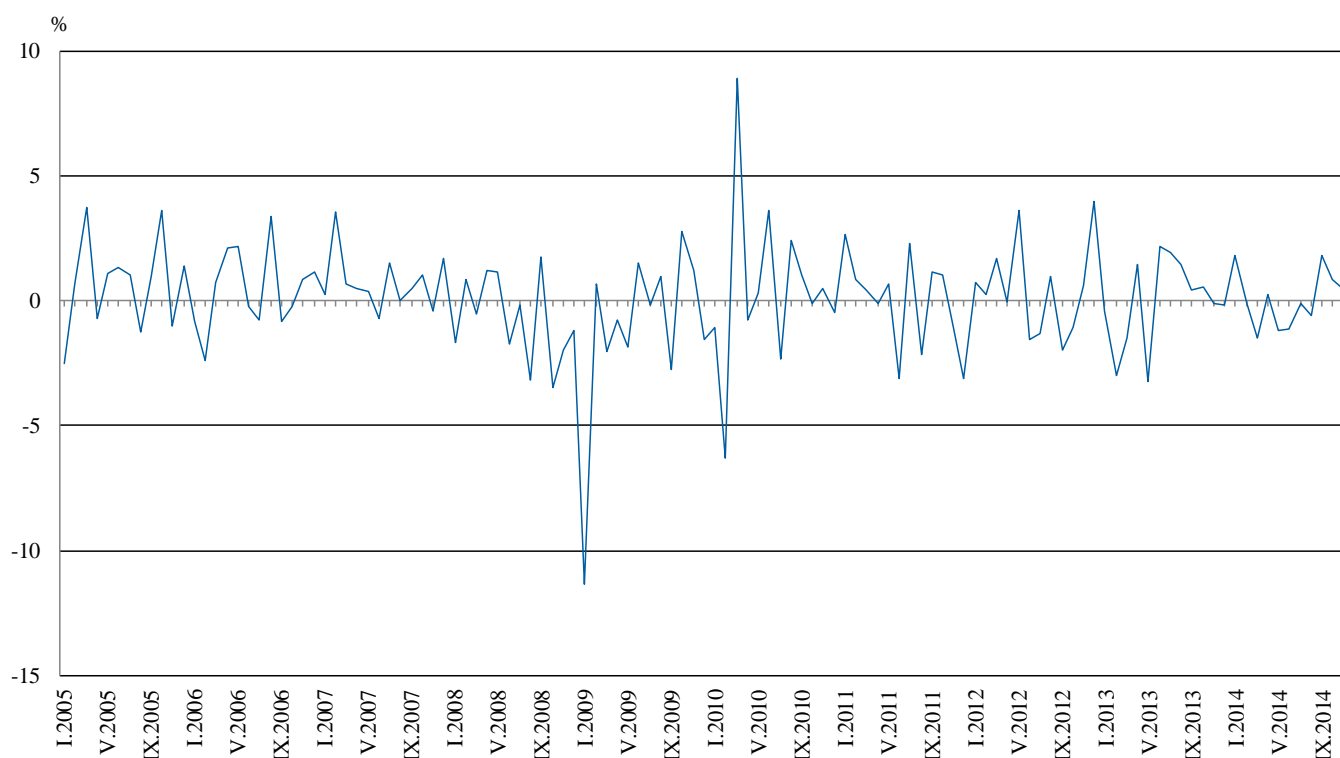


Monthly comparisons

In November 2014 as compared to October 2014, the seasonally adjusted Industrial Production Index increased in the mining and quarrying industry by 0.9%, in the manufacturing by 0.7% and in the electricity, gas, steam and air conditioning supply by 0.2%.

The most significant increases of production in the manufacturing were registered in the repair and installation of machinery and equipment by 26.7%, in the manufacture of leather and related products by 16.9%, in the manufacture of machinery and equipment by 10.6%, in the printing and reproduction of recorded media by 8.1%. There were decreases in the manufacture of chemicals and chemical products by 12.9%, in the manufacture of basic metals by 11.4%, in the manufacture of textiles by 8.1%, in the manufacture of other transport equipment by 5.7%.

**Figure 2. Changes of Industrial Production Indices compared to the previous month
(Seasonally adjusted)**



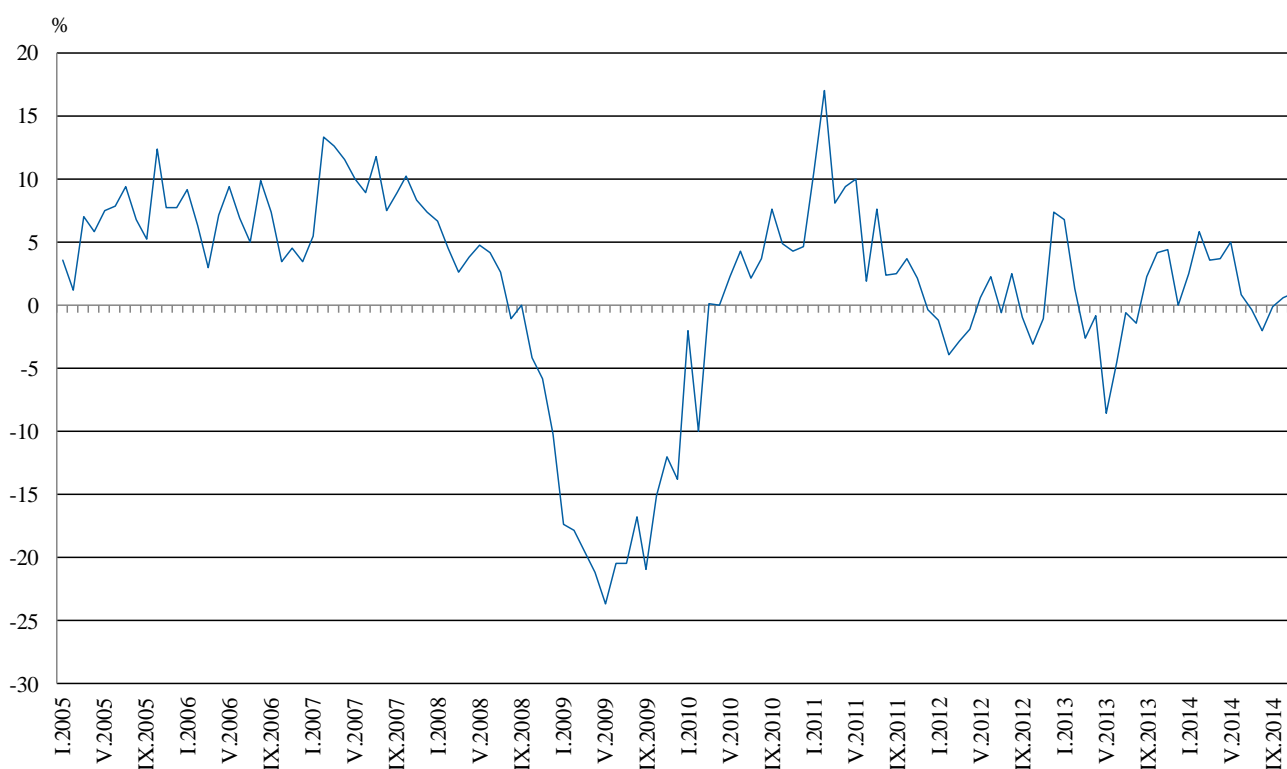


Annual comparisons

On annual basis in November 2014 Industrial Production Index, calculated from working day adjusted data increased in the manufacturing by 3.5%, while decreases were seen in the mining and quarrying industry by 7.6% and in the electricity, gas, steam and air conditioning supply by 1.6%.

In the manufacturing, the more significant increases compared to the same month of the previous year were seen in the repair and installation of machinery and equipment by 51.7%, in the manufacture of motor vehicles, trailers and semi-trailers by 35.9%, in the manufacture of leather and related products by 28.8%, in the printing and reproduction of recorded media by 20.1%. Decreases were registered in the manufacture of basic metals by 16.7%, in the manufacture of wood and of products of wood and cork, except furniture; manufacture of articles of straw and plaiting materials by 9.0%, in the manufacture of wearing apparel by 8.9%.

Figure 3. Changes of Industrial Production Indices compared to the same month of the previous year (Working day adjusted)



The final data on Industrial Production and Turnover Indices for October 2014 can be found on the NSI web-site: <http://www.nsi.bg/en>.

Annex

Table 1
Changes of Industrial Production Indices compared to the previous month¹
(Per cent)

Economic Activities	NACE.BG - 2008	2014					
		VI	VII	VIII	IX	X	XI
Industry	B_TO_E36	-1.1	-0.1	-0.6	1.8	0.9	0.4
Mining and quarrying	B	-2.3	1.1	2.5	-5.9	6.1	0.9
of which:							
Mining of coal and lignite	B05	-21.6	3.4	5.9	0.9	5.4	-5.0
Mining of metal ores	B07	14.9	4.7	-1.8	-9.7	3.6	15.1
Other mining and quarrying	B08	2.3	6.1	-0.2	1.7	3.9	0.6
Manufacturing	C	0.3	2.0	-0.4	1.5	0.0	0.7
of which:							
Manufacture of food products	C10	0.6	1.9	-0.2	-1.9	2.5	2.7
Manufacture of beverages	C11	-1.0	1.1	1.9	-8.0	-2.9	5.5
Manufacture of tobacco products	C12	-14.5	22.5	-7.3	10.0	6.6	-3.6
Manufacture of textiles	C13	-4.6	5.0	1.3	0.7	-0.3	-8.1
Manufacture of wearing apparel	C14	-5.6	-1.2	4.5	-3.8	-0.3	-1.3
Manufacture of leather and related products	C15	4.9	0.1	4.4	-1.4	0.0	16.9
Manufacture of wood and of products of wood and cork, except furniture; manufacture of articles of straw and plaiting materials	C16	0.1	3.6	-4.9	-6.3	6.1	-3.3
Manufacture of paper and paper products	C17	1.4	1.1	-2.9	2.0	2.7	-0.7
Printing and reproduction of recorded media	C18	-6.9	2.2	-12.0	11.0	2.5	8.1
Manufacture of chemicals and chemical products	C20	-0.8	-9.8	10.0	6.6	14.3	-12.9
Manufacture of basic pharmaceutical products and pharmaceutical preparations	C21	-2.2	3.7	-12.8	8.7	7.4	-1.3
Manufacture of rubber and plastic products	C22	1.1	2.1	-4.9	3.1	-0.5	-4.1
Manufacture of other non-metallic mineral products	C23	-7.1	5.7	-0.4	-4.0	2.1	2.0
Manufacture of basic metals	C24	1.5	1.6	-1.2	-2.9	0.7	-11.4
Manufacture of fabricated metal products, except machinery and equipment	C25	8.7	3.1	-7.3	17.9	-10.2	5.5
Manufacture of computer, electronic and optical products	C26	-4.1	13.4	-14.1	5.1	6.9	-4.7
Manufacture of electrical equipment	C27	-1.2	1.8	-4.0	4.8	3.2	0.7
Manufacture of machinery and equipment n.e.c.	C28	0.6	1.7	2.2	6.0	-4.0	10.6
Manufacture of motor vehicles, trailers and semi-trailers	C29	3.8	0.5	-1.5	8.8	3.6	3.8
Manufacture of other transport equipment	C30	-3.8	26.2	-36.1	6.9	31.0	-5.7
Manufacture of furniture	C31	-0.1	3.0	6.2	-4.8	-1.8	-0.3
Other manufacturing	C32	12.5	8.9	-8.2	-2.7	-5.6	6.3
Repair and installation of machinery and equipment	C32	7.9	6.6	2.0	0.6	-4.6	26.7
Electricity, gas, steam and air conditioning supply	D	-0.3	-0.9	-3.1	3.8	3.6	0.2
Electricity, gas, steam and air conditioning supply	D35	-0.3	-0.9	-3.1	3.8	3.6	0.2

¹ Seasonally adjusted.



Table 2

Changes of Industrial Production Indices compared to the same month of the previous year¹
(Per cent)

Economic Activities	NACE.BG - 2008	2014					
		VI	VII	VIII	IX	X	XI
Industry	B_TO_E36	0.9	-0.3	-2.0	0.0	0.6	0.9
Mining and quarrying	B	-0.7	-1.3	-5.3	-7.4	-8.5	-7.6
of which:							
Mining of coal and lignite	B05	-11.5	10.1	-9.9	2.1	-6.7	-8.2
Mining of metal ores	B07	2.9	-5.4	-2.0	-14.3	-9.5	-9.0
Other mining and quarrying	B08	-4.3	4.0	-5.5	4.1	10.9	14.3
Manufacturing	C	2.2	3.9	2.9	5.1	2.7	3.5
of which:							
Manufacture of food products	C10	-6.7	-3.7	5.2	-2.0	-2.1	-2.6
Manufacture of beverages	C11	-11.9	-3.9	-1.5	-16.0	-14.4	-7.6
Manufacture of tobacco products	C12	-25.2	-5.8	-9.9	-3.7	23.2	19.7
Manufacture of textiles	C13	1.8	11.0	6.8	3.5	9.6	3.0
Manufacture of wearing apparel	C14	-0.7	-4.2	1.5	-3.6	-0.3	-8.9
Manufacture of leather and related products	C15	7.0	0.2	6.9	-2.0	-1.0	28.8
Manufacture of wood and of products of wood and cork, except furniture; manufacture of articles of straw and plaiting materials	C16	0.7	5.5	4.9	-7.7	0.7	-9.0
Manufacture of paper and paper products	C17	2.2	-1.2	-1.0	1.1	1.9	-0.4
Printing and reproduction of recorded media	C18	2.4	-0.6	-4.4	0.6	7.6	20.1
Manufacture of chemicals and chemical products	C20	11.0	-4.3	13.6	29.8	33.4	11.4
Manufacture of basic pharmaceutical products and pharmaceutical preparations	C21	2.8	2.3	-17.0	-8.7	6.0	2.3
Manufacture of rubber and plastic products	C22	18.9	18.0	12.1	10.6	12.1	6.2
Manufacture of other non-metallic mineral products	C23	0.6	6.6	-1.2	-4.3	0.9	2.9
Manufacture of basic metals	C24	17.5	8.1	6.6	1.5	0.6	-16.7
Manufacture of fabricated metal products, except machinery and equipment	C25	8.8	10.0	2.7	22.9	-7.0	11.7
Manufacture of computer, electronic and optical products	C26	20.0	18.2	5.6	13.1	1.2	6.3
Manufacture of electrical equipment	C27	-1.2	6.0	-6.9	4.4	9.5	8.7
Manufacture of machinery and equipment n.e.c.	C28	5.6	3.2	6.4	10.9	1.8	14.0
Manufacture of motor vehicles, trailers and semi-trailers	C29	24.0	19.4	32.4	31.3	36.5	35.9
Manufacture of other transport equipment	C30	2.6	45.0	-20.9	-11.8	4.1	-3.8
Manufacture of furniture	C31	3.5	7.6	11.9	4.8	0.6	-0.9
Other manufacturing	C32	0.3	10.0	3.4	3.4	-11.5	-5.1
Repair and installation of machinery and equipment	C33	18.5	22.5	26.3	18.2	2.4	51.7
Electricity, gas, steam and air conditioning supply	D	-4.4	-12.0	-15.2	-11.7	-2.7	-1.6
Electricity, gas, steam and air conditioning supply	D35	-4.4	-12.0	-15.2	-11.7	-2.7	-1.6

¹ Working day adjusted.



Table 3

**Industrial Production Indices
(Seasonally adjusted, 2010 = 100)**

NACE.BG - 2008	2013		2014										
	XI	XII	I	II	III	IV	V	VI	VII	VIII	IX	X	XI
B_TO_E36	108.0	107.8	109.8	109.7	108.1	108.3	107.1	105.8	105.7	105.1	106.9	107.9	108.4
B	107.4	120.4	115.8	95.7	92.2	99.6	96.2	94.0	95.1	97.5	91.8	97.4	98.2
B05	111.0	124.7	123.4	103.5	87.8	115.9	114.2	89.5	92.6	98.0	98.9	104.3	99.0
B07	113.1	121.7	115.8	95.6	93.2	81.7	81.5	93.6	98.0	96.3	87.0	90.1	103.7
B08	102.5	88.5	107.3	101.2	102.9	114.2	101.0	103.3	109.7	109.4	111.2	115.5	116.2
C	108.3	107.0	109.3	111.5	108.8	109.4	107.2	107.5	109.6	109.1	110.8	110.8	111.6
C10	95.7	89.7	90.0	88.4	92.1	91.8	88.0	88.6	90.3	90.1	88.4	90.6	93.0
C11	99.8	103.4	97.6	108.4	106.5	100.6	95.9	95.0	96.1	97.8	90.0	87.4	92.3
C12	101.7	111.7	114.1	121.4	114.7	118.9	102.3	87.5	107.2	99.4	109.3	116.5	112.3
C13	95.5	97.6	109.0	107.3	112.1	106.8	106.5	101.7	106.8	108.1	108.9	108.6	99.8
C14	104.1	100.9	100.9	99.8	102.8	100.0	102.9	97.1	96.0	100.3	96.5	96.3	95.0
C15	73.4	75.3	77.8	77.3	74.7	76.7	72.6	76.2	76.2	79.6	78.5	78.5	91.8
C16	103.9	95.9	110.1	109.5	101.1	99.0	99.4	99.4	103.0	97.9	91.8	97.4	94.2
C17	123.0	117.9	124.7	120.2	115.5	117.7	117.0	118.7	120.0	116.5	118.9	122.1	121.2
C18	94.3	105.0	112.8	109.5	111.7	107.7	109.4	101.9	104.2	91.7	101.8	104.3	112.8
C20	99.9	99.4	95.0	97.5	97.7	105.8	106.6	105.8	95.4	105.0	111.9	127.9	111.4
C21	135.7	135.4	147.5	140.4	133.3	143.0	133.7	130.8	135.6	118.2	128.5	138.0	136.3
C22	114.5	114.6	127.8	129.2	126.0	132.2	126.5	128.0	130.6	124.2	128.0	127.3	122.1
C23	111.6	112.5	111.5	119.6	113.1	115.4	117.2	108.9	115.1	114.7	110.1	112.4	114.6
C24	104.5	98.4	110.5	105.3	102.3	98.9	104.6	106.2	107.8	106.5	103.4	104.1	92.3
C25	111.9	98.8	112.2	117.6	104.6	113.7	107.3	116.6	120.2	111.4	131.3	117.9	124.4
C26	127.7	106.1	141.3	128.0	139.5	127.4	136.4	130.9	148.4	127.5	133.9	143.1	136.5
C27	121.1	114.4	128.2	131.1	129.5	129.9	124.5	123.0	125.2	120.1	125.9	129.9	130.9
C28	142.4	148.9	149.8	139.6	137.0	150.1	133.8	134.5	136.8	139.9	148.4	142.4	157.5
C29	113.6	106.5	137.1	131.3	135.1	129.3	126.7	131.6	132.2	130.2	141.6	146.6	152.2
C30	85.9	69.3	80.1	82.1	87.9	93.6	79.5	76.5	96.6	61.7	66.0	86.5	81.5
C31	124.1	118.5	126.3	122.6	119.1	122.4	121.1	121.0	124.6	132.3	125.9	123.7	123.4
C32	156.7	131.2	136.6	153.6	166.1	154.8	135.6	152.5	166.1	152.5	148.4	140.1	148.9
C33	75.6	77.9	81.5	81.2	79.4	75.6	76.8	82.9	88.4	90.1	90.7	86.5	109.6
D	109.8	113.1	118.7	109.2	108.3	103.3	104.1	103.9	102.9	99.8	103.5	107.2	107.5
D35	109.8	113.1	118.7	109.2	108.3	103.3	104.1	103.9	102.9	99.8	103.5	107.2	107.5

Table 4

Industrial Production Indices
(Working day adjusted, 2010 = 100)

NACE.BG - 2008	2011	2012	2013		2014										
	XI	XI	XI	XII	I	II	III	IV	V	VI	VII	VIII	IX	X	XI
B_TO_E36	111.0	109.9	114.8	113.9	105.1	101.6	106.9	104.1	101.3	105.7	109.9	102.3	107.4	113.2	115.8
B	109.7	87.8	117.1	131.6	109.9	88.4	87.6	92.2	90.5	89.5	94.4	96.3	94.2	111.4	108.1
B05	151.6	100.0	125.6	145.0	135.2	98.7	77.5	93.1	95.9	64.2	79.7	96.3	104.0	136.1	115.3
B07	65.1	74.0	113.3	129.6	102.3	85.4	93.2	85.7	86.0	99.6	98.2	94.2	84.9	97.9	103.0
B08	98.4	140.1	114.5	89.0	67.6	71.8	93.3	112.7	107.7	114.0	124.8	122.6	124.0	135.7	130.8
C	109.7	109.4	114.1	103.1	94.2	98.6	107.6	111.1	108.2	113.7	118.2	107.0	114.5	117.6	118.1
C10	99.0	98.0	102.5	94.1	75.8	75.7	90.4	88.1	86.1	90.9	91.6	93.0	95.7	99.9	99.8
C11	85.5	88.2	90.5	107.9	60.7	70.7	98.7	98.6	107.2	116.8	117.2	122.1	99.4	76.1	83.7
C12	142.4	87.6	90.2	103.3	81.6	92.8	114.4	117.6	113.3	103.9	128.7	103.5	122.0	116.4	108.0
C13	100.1	98.9	98.8	85.1	92.7	103.1	127.0	117.7	120.0	113.4	112.3	87.2	104.9	109.9	101.8
C14	93.3	93.6	104.8	101.5	102.9	98.3	100.5	93.8	95.6	102.8	107.9	101.4	92.3	92.0	95.5
C15	89.6	77.2	72.7	69.0	77.5	75.3	74.3	65.8	62.7	80.8	92.2	79.8	86.3	82.2	93.6
C16	106.4	109.9	113.3	87.7	88.8	90.7	96.5	97.0	99.2	108.1	115.0	101.0	98.9	109.3	103.1
C17	83.3	103.3	117.5	111.0	117.0	113.6	119.6	122.0	120.7	124.5	128.1	117.1	119.7	118.9	117.0
C18	106.0	110.6	100.6	116.9	93.5	96.7	106.3	104.4	106.5	106.4	104.7	93.7	107.1	113.1	120.8
C20	107.3	100.1	103.3	98.4	88.4	91.6	107.7	109.9	107.7	110.1	95.7	98.6	112.0	126.1	115.0
C21	131.4	126.0	139.4	131.5	123.5	142.5	133.3	144.5	131.8	138.7	127.5	106.9	129.9	151.3	142.6
C22	98.1	119.7	122.2	102.0	103.8	109.4	125.6	130.8	124.7	138.2	144.6	127.0	136.3	142.7	129.7
C23	110.9	129.3	121.1	94.7	78.6	96.0	109.3	121.6	128.3	117.2	124.5	122.3	119.2	126.4	124.7
C24	120.2	110.5	116.8	72.6	114.1	102.6	98.3	105.4	110.0	101.6	126.2	100.8	93.4	118.9	97.3
C25	120.5	109.2	119.8	112.4	83.4	103.7	105.6	113.7	105.0	124.4	126.8	108.5	136.1	123.5	133.8
C26	129.7	137.1	135.4	123.1	124.8	115.0	143.7	126.1	136.9	136.4	149.6	111.7	137.3	144.5	144.0
C27	125.0	138.9	133.8	110.0	116.3	121.6	128.5	131.1	117.6	132.4	133.8	105.1	127.8	141.9	145.4
C28	123.7	126.5	147.0	143.1	129.4	132.5	146.2	153.8	132.1	144.9	144.3	126.1	151.1	144.8	167.5
C29	101.5	101.0	123.3	91.6	129.7	124.5	141.8	133.9	127.8	141.7	135.5	109.7	146.9	160.0	167.6
C30	99.8	67.5	79.4	74.8	53.6	72.6	93.3	94.6	98.7	89.0	103.8	50.6	57.5	85.4	76.4
C31	122.2	124.6	135.1	124.2	106.5	106.5	117.5	117.2	118.6	126.5	127.7	135.2	130.0	136.0	133.9
C32	103.9	125.8	165.5	114.9	109.8	132.2	166.7	150.9	136.7	173.3	168.6	155.0	158.7	163.8	157.1
C33	109.0	113.9	83.8	110.3	56.6	69.7	78.3	68.5	71.1	84.4	87.2	90.4	95.5	92.0	127.1
D	117.9	124.0	118.9	139.7	139.5	119.4	117.4	92.6	84.6	88.8	94.2	90.1	91.8	102.2	116.9
D35	117.9	124.0	118.9	139.7	139.5	119.4	117.4	92.6	84.6	88.8	94.2	90.1	91.8	102.2	116.9