



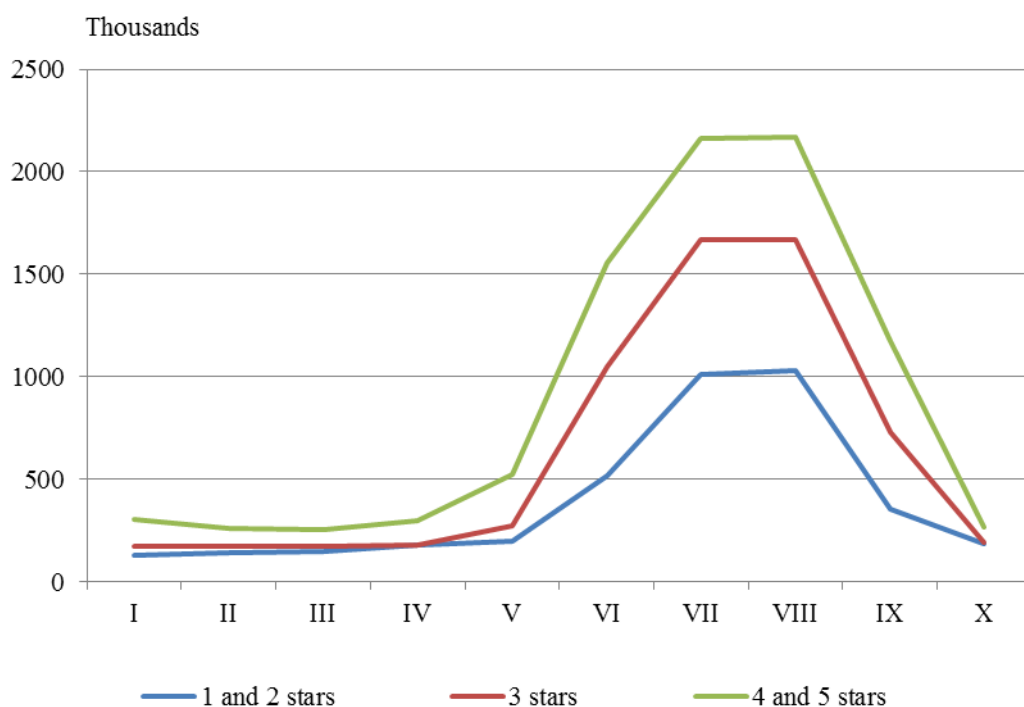
## ACTIVITY OF ACCOMMODATION ESTABLISHMENTS IN OCTOBER 2012

Since 2012 the survey on accommodation establishments has been carried out monthly in compliance with the Regulation 692/2011 of the European Parliament and of the Council concerning European statistics on tourism and in accordance with the regulation 1051/2011 of the Commission implementing Regulation 692/2011 of the European Parliament and of the Council concerning European statistics on tourism, as regards the structure of the quality reports and the transmission of the data.

In October 2012, 1 776 accommodation establishments - hotels, motels, camping sites, mountain chalets and other establishments for short-term accommodation with more than 10 bed places were functioned in Bulgaria (Annex, Table 1). The total number of the rooms in them was 65.9 thousands and the bed-places were 133.6 thousands. In comparison with the previous month the total number of accommodation establishments decreased by 23.7% and the bed-places in them - by 44.4%.

The total number of the nights spent in all accommodation establishments amounted to 650.4 thousands as 415.9 thousands of them were spent by Bulgarian residents and 234.5 thousands - by foreigners. In 4 and 5 stars hotels the foreign citizens realized 66.9% from all nights spent by them, while by Bulgarians they were 26.9%. In 3 stars accommodation establishments were spent 23.0% by nights of foreigners and 33.9% - of Bulgarian residents while in the rest of accommodation with 1 and 2 stars these shares were 10.1 and 39.2% respectively.

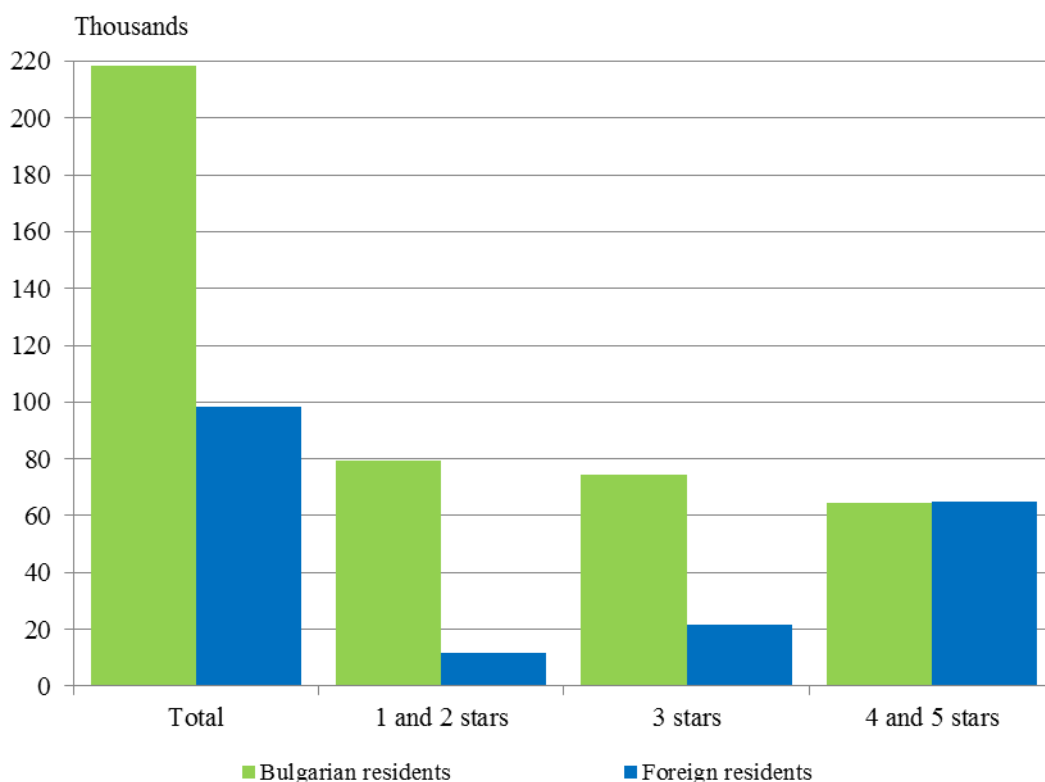
**Figure 1. The nights spent in accommodation establishments by categories and months in 2012**





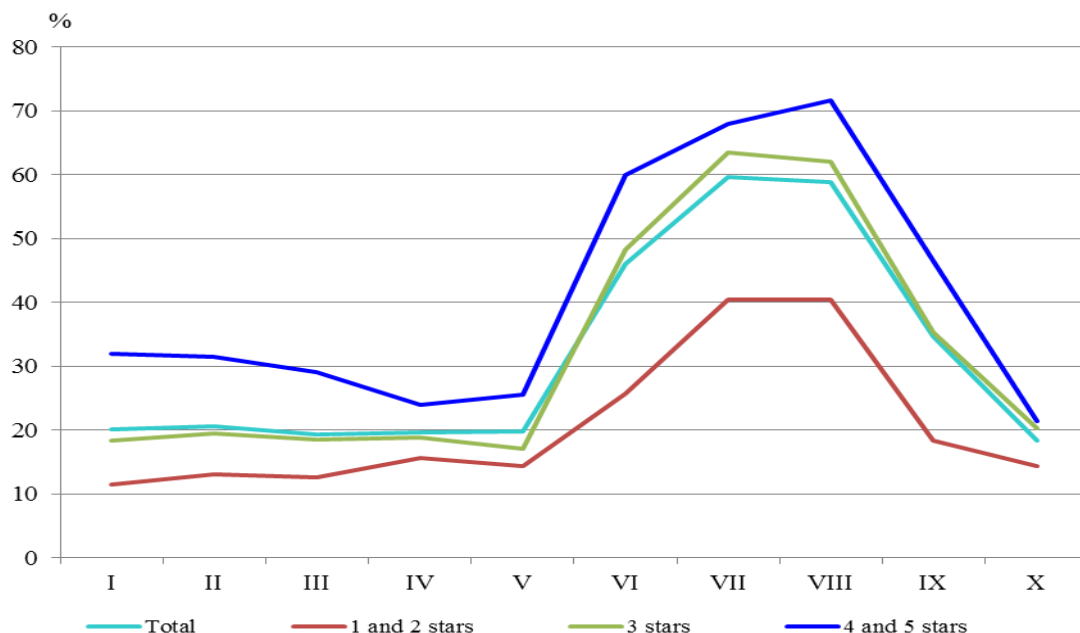
Compared to September 2012 the arrivals in all accommodation establishments in October decreased by 44.3% and reached 316.6 thousands. The relative share of Bulgarian guests were 69.0% of all arrivals as the majority part (70.5%) of them spent the nights in hotels 1 and 2 or 3 stars and spent 2.0 nights on the average. The arrivals of foreigners were 98.3 thousands as 66.2% of them spent nights in hotels with 4 and 5 stars. On the average 2.4 nights were spent by foreigners.

**Figure 2. Arrivals in accommodation establishments by categories in October 2012**



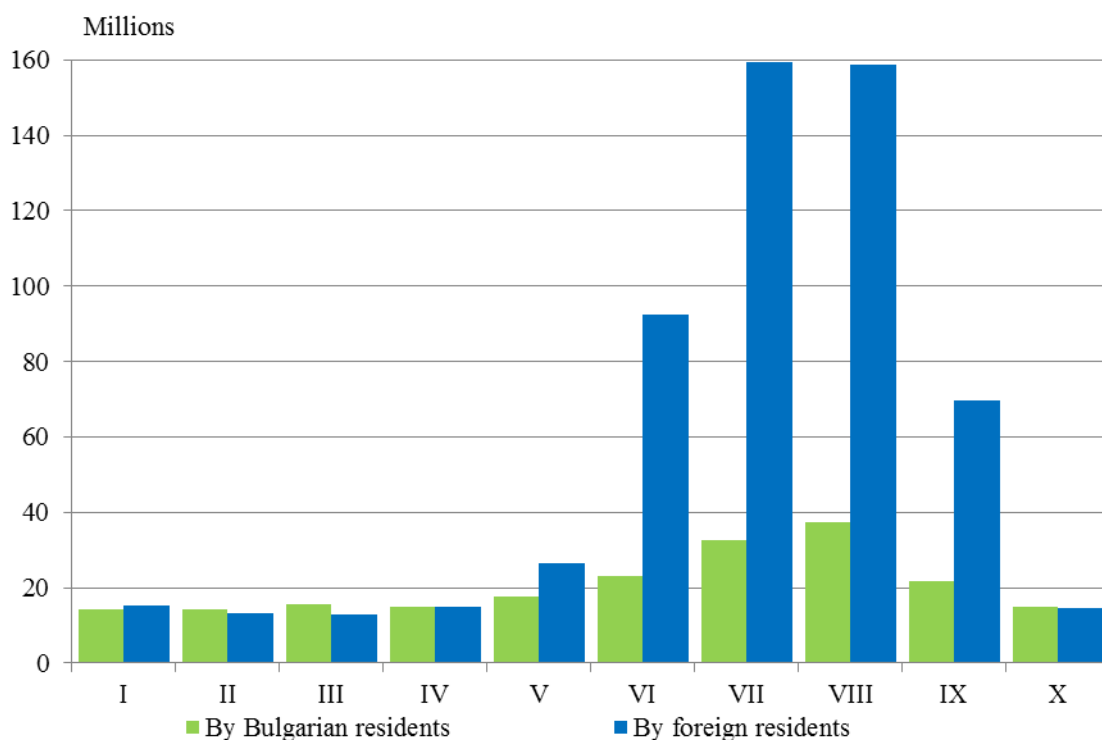
In October 2012, the total occupancy of the bed-places in accommodation establishments was 18.4% as the highest it was in 4 and 5 stars accommodation establishments - 21.4%, followed by these with 3 stars - 20.3% and with 1 and 2 stars - 14.3%. In comparison with the previous month the reduction of occupancy of the bed-places in all categories accommodation establishments was observed - total by 16.2 percentage points.

**Figure 3. The occupation of the bed-places in accommodation establishments by categories and months in 2012**



The total revenues from nights spent in October reached 29.3 million BGN or by 67.9% less compared to September. A decrease by 31.8% in the revenues from Bulgarians as well by 79.1% in the revenues from the foreigners was registered.

**Figure 4. The revenues from nights spent in accommodation establishments by months in 2012**





### Methodological notes

In the statistical survey of **accommodation establishments** are included all categorized accommodation establishments with 10 and more bed-places in use during the reference month - hotels, camping sites and other type of accommodation establishments.

The indicator **other accommodation establishments** contained the holiday settlements, hostels, guests houses, bungalows, rest houses, mountain chalets, private rooms and flats and other establishments for short accommodation.

The data for the item '**Available Bed Capacity**' is obtained through accumulation of the number of bed-places for each of the days of the reference period, when they were put into utilization, irrespective if they are occupied or not.

In the **revenues from nights spent** in accommodation establishments are included the sums paid by the guests, without the extra services.

Annex

Table 1

Activity of accommodation establishments in October 2012<sup>1</sup>

Districts	Accommodation establishments - number	Bed-places - number	Available bed-nights <sup>2</sup> - number	Night spent - number		Arrivals in accommodation establishments - number		Revenues from nights spent - thousands BGN	
				Total	of which: by foreigners	Total	of which: foreigners	Total	of which: by foreigners
<b>Total</b>	<b>1776</b>	<b>133629</b>	<b>3526148</b>	<b>650350</b>	<b>234545</b>	<b>316576</b>	<b>98265</b>	<b>29339</b>	<b>14537</b>
Blagoevgrad	150	10074	285891	57512	19646	27105	8158	1783	585
Burgas	120	26738	495479	55282	27546	19144	7110	2194	1160
Varna	151	22271	527895	77384	47210	25283	9633	3473	2353
Veliko Tarnovo	98	4861	150355	22069	4545	15115	3243	806	231
Vidin	32	896	27764	4473	812	3100	431	165	34
Vratsa	25	963	29753	6300	901	2601	220	190	38
Gabrovo	57	2879	85969	14276	892	7984	486	408	38
Dobrich	41	5762	120500	15061	6566	5639	1557	444	200
Kardzhali	25	841	26071	4795	1105	3226	708	144	40
Kyustendil	45	2426	75206	9904	1909	5602	952	318	99
Lovech	74	3513	108241	15718	1044	9151	604	502	44
Montana	28	1437	44547	7205	383	3249	268	192	20
Pazardzhik	53	3940	122049	30275	3672	13590	1250	1309	226
Pernik	11	515	15955	1652	276	1137	107	41	6
Pleven	13	1052	23876	8813	1479	4752	564	304	72
Plovdiv	136	8244	248985	71833	14695	36067	6953	3074	865
Razgrad	15	573	17763	3658	631	1896	264	131	27
Ruse	44	1687	52297	13264	4125	8396	2125	605	224
Silistra	20	629	19499	3549	473	2329	240	147	23
Sliven	74	2393	73131	8423	2207	4134	568	285	90
Smolyan	233	8339	252272	22906	1456	11819	785	611	55
Sofia	59	5049	154269	18128	2642	9184	1414	438	63
Sofia Cap.	125	11564	353257	125355	82208	73508	46207	9923	7635
Stara Zagora	34	2932	89543	28773	3029	9250	1500	1050	196
Targovishte	21	871	27001	3802	523	2248	211	131	27
Haskovo	37	1319	40889	8393	2133	5236	1651	297	83
Shumen	35	1167	36177	7532	1527	4389	723	252	65
Yambol	20	694	21514	4015	910	1442	333	122	38

<sup>1</sup> In use

<sup>2</sup> The data for the "Available Bed Capacity" item are obtained through accumulation of the number of bed-places for each of the days of the reference period when they are put into utilization, irrespective of whether they are occupied or not.