



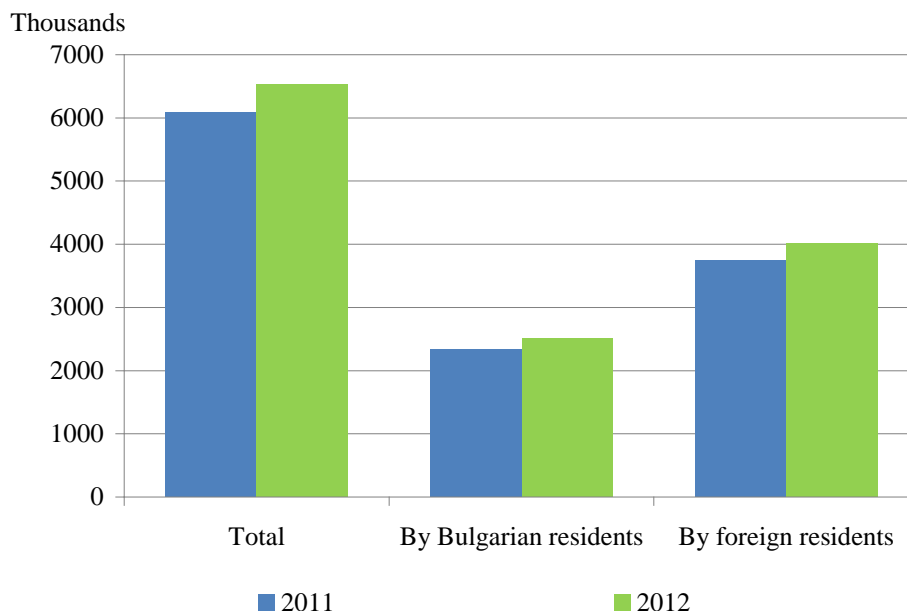
## ACTIVITY OF ACCOMMODATION ESTABLISHMENTS<sup>1</sup> IN JUNE 2012

In June 2012, 2 300 accommodation establishments - hotels, motels, camping sites, mountain chalets and other establishments for short-term accommodation with more than 10 bed places were functioned in the country (Annex, Table 1). The total number of the rooms in them was 114.6 thousands and the bed-places were 242.1 thousands. In comparison with the previous month the total number of accommodation establishments increased by 19.0% and the bed-places in them - by 29.2%.

The total number of the nights spent in all accommodation establishments amounted to 3 123.4 thousands as 680.2 thousands by them were spent by Bulgarian residents and 2 443.2 thousands - by foreigners. In 4 and 5 stars hotels the foreign citizens were realized 56.7% from all nights spent by them, while by Bulgarians they were 25.2%. In 3 stars accommodation establishments were spent 34.1% by nights of foreigners and 32.1% - of Bulgarian residents, while in the rest of accommodation whit 1 and 2 stars these share were 9.2 and 42.7% respectively.

During the period January - June 2012 the nights spent in all accommodation establishments were 6 534.3 thousands or by 7.4% more in comparison with the same period of the previous year. The nights spent by foreign residents increased by 7.3% and by Bulgarian residents - by 7.5%.

**Figure 1. The nights spent in accommodation establishments during the period January - June**

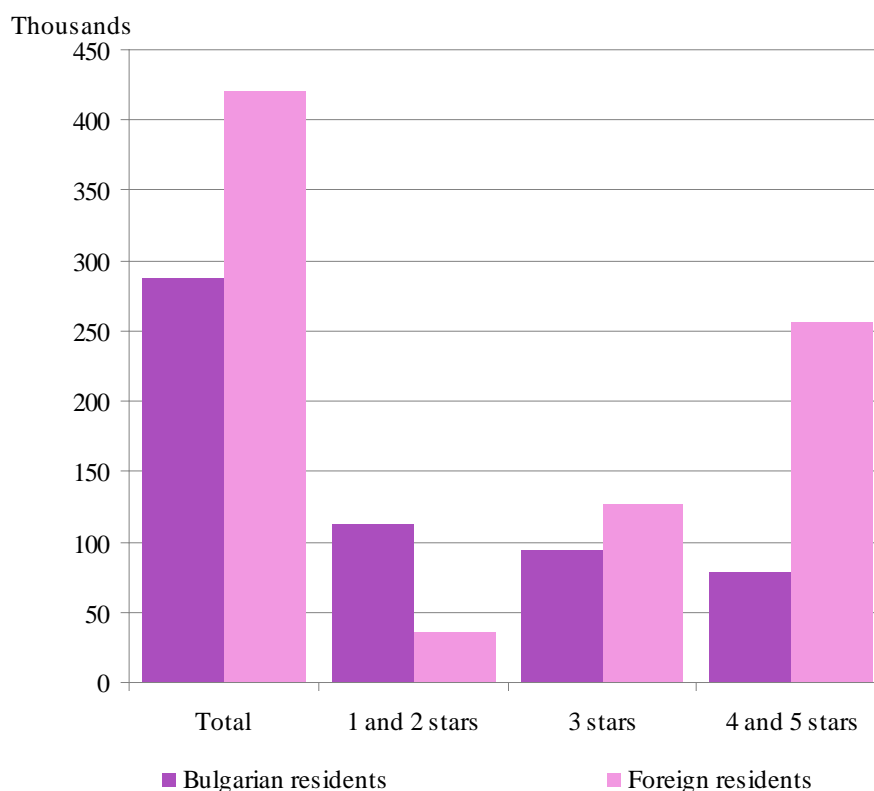


<sup>1</sup> Since January 2012 the survey on accommodation establishments has been carried out monthly in compliance with the Regulation 692/2011 of the European Parliament and of the Council concerning European statistics on tourism and the regulation 1051/2011 of the Commission implementing Regulation 692/2011 of the European Parliament and of the Council concerning European statistics on tourism, as regards the structure of the quality reports and the transmission of the data.



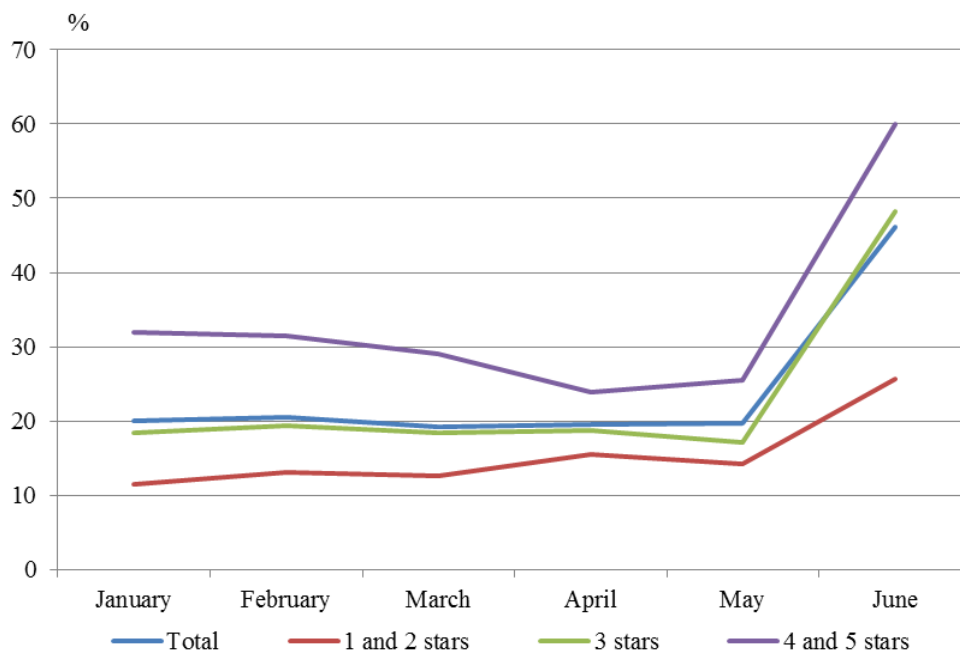
Compared to May 2012 the arrivals in all accommodation establishments in June increased by 86.2% and reached 709.5 thousands. The relative share of Bulgarian guests were 40.6% of all arrivals as the majority part (72.6%) of them spent the nights in hotels 1 and 2 or 3 stars and spent 2.4 nights on the average. The arrivals of foreigners were 421.5 thousands as 61.0% of them spent nights in hotels with 4 and 5 stars. On the average 5.8 nights were spent by foreigners.

**Figure 2. Arrivals in accommodation establishments by categories in June 2012**



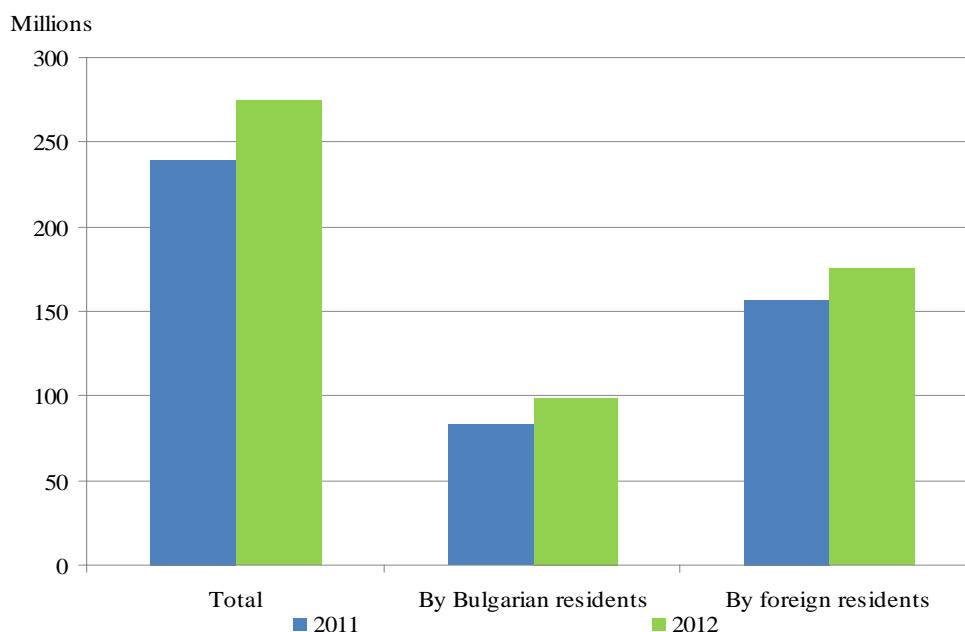
In June 2012, the total occupancy of the bed-places in accommodation establishments was 46.1% as the highest it was in 4 and 5 stars accommodation establishments - 60.0%, followed by these with 3 stars - 48.3% and with 1 and 2 stars – 25.7%. In comparison with the previous month as a whole the occupancy increased by 26.3 percentage points as the greatest it was in the accommodation establishments with 4 and 5 stars - by 34.4 percentage points.

**Figure 3. The occupation of the bed-places in accommodation establishments by categories and months in 2012**



The total revenues from nights spent in June reached 115.5 million BGN as from foreigners they were 92.6 million BGN and from Bulgarians - 22.9 million. During the period January - June 2012 the total revenues increased by 14.5% compared to the same period of 2011, as from foreign residents they increased by 19.6%, while from Bulgarian residents they were by 11.8% more.

**Figure 4. The revenues from nights spent in accommodation establishments during the period January – June**





### Methodological notes

In the statistical survey of **accommodation establishments** were included all categorized hotels, camping sites and other type of accommodation establishments with more than 10 bed-places in use during the reporting period.

The indicator **other accommodation establishments** contained the holiday settlements, hostels, guests houses, bungalows, rest houses, mountain chalets, private rooms and flats and other establishments for short accommodation.

Table 1

Activity of accommodation establishments in June 2012<sup>1</sup>

	Accommodation establishments - number	Bed-places - number	Available bed-nights <sup>2</sup> - number	Night spent - number		Arrivals in accommodation establishments - number		Revenues from nights spent - thousands BGN	
				Total	of which: by foreigners	Total	of which: foreigners	Total	of which: by foreigners
<b>Total</b>	<b>2300</b>	<b>242132</b>	<b>6775900</b>	<b>3123432</b>	<b>2443258</b>	<b>709548</b>	<b>421500</b>	<b>115543</b>	<b>92593</b>
Blagoevgrad	166	11051	303096	47117	13588	22811	5879	1648	473
Burgas	404	88205	2351501	1371210	1205360	208610	166214	50342	45096
Varna	289	50501	1491543	848965	746107	163081	126900	32918	29639
Veliko Tarnovo	100	4903	146585	30949	6955	21384	5493	1204	333
Vidin	33	902	27649	5514	1169	3043	618	199	43
Vratsa	24	963	28890	6707	971	3234	270	176	36
Gabrovo	57	2848	80436	17398	2678	9852	1274	448	103
Dobrich	109	22759	575132	370462	321166	57480	42607	7493	6421
Kardzhali	26	839	25170	4821	1419	3249	651	131	40
Kyustendil	48	2536	75760	14779	2773	7080	1378	440	136
Lovech	76	3544	105858	19882	1520	11494	851	591	82
Montana	26	1262	37860	8055	1256	3596	455	230	42
Pazardzhik	52	3900	111833	34913	4479	15838	1659	1270	232
Pernik	12	525	15750	3502	66	2276	49	67	4
Pleven	14	1064	24440	8476	2422	4645	818	991	89
Plovdiv	136	8221	242280	73641	23233	34840	10076	3138	1321
Razgrad	14	559	16770	3759	742	2384	387	141	35
Ruse	44	1670	50100	15083	4254	8745	2245	672	261
Silistra	20	629	18870	4058	548	2952	396	168	27
Sliven	73	2373	71190	11572	1414	5936	784	395	74
Smolyan	238	8698	258756	23907	1763	12896	898	604	61
Sofia	62	5601	163866	22525	2875	11474	1284	502	59
Sofia Cap.	124	11524	341515	121188	82921	68551	44445	9380	7389
Stara Zagora	34	2868	86040	32060	8047	11235	3153	1596	355
Targovishte	21	871	26070	2962	589	1953	234	103	25
Haskovo	40	1420	42600	9516	2953	5334	1533	373	134
Shumen	36	1167	34470	5088	883	3661	555	151	35
Yambol	22	729	21870	5323	1107	1914	394	171	46

<sup>1</sup> In use

<sup>2</sup> The data for the "Available Bed Capacity" item are obtained through accumulation of the number of bed-places for each of the days of the reference period when they are put into utilization, irrespective of whether they are occupied or not.