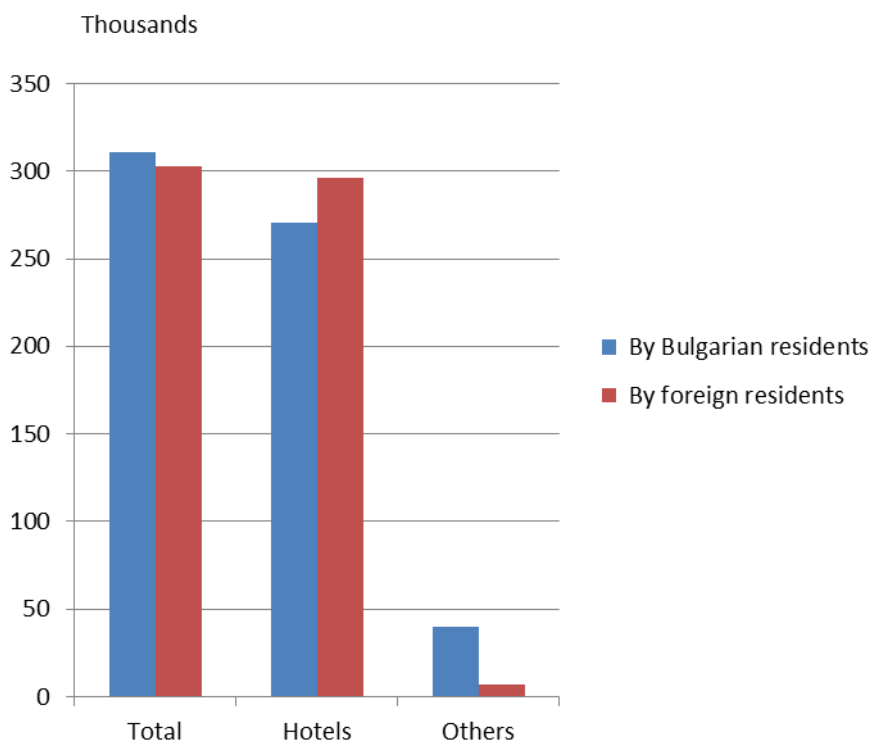




ACTIVITY OF ACCOMMODATION ESTABLISHMENTS¹ **IN JANUARY 2012**

In January 2012 the total number of the nights spent in all accommodation establishments amounted to 613.5 thousand as 310.5 thousand of them was by Bulgarian residents and 303.0 thousand - by foreigners. In the hotels were spent 97.7% of the nights by foreigners and 87.1% of the nights by Bulgarian residents, while in other accommodation establishments these shares were 2.3 and 12.9% respectively.

Figure 1. The nights spent in accommodation establishments
by type in January 2012

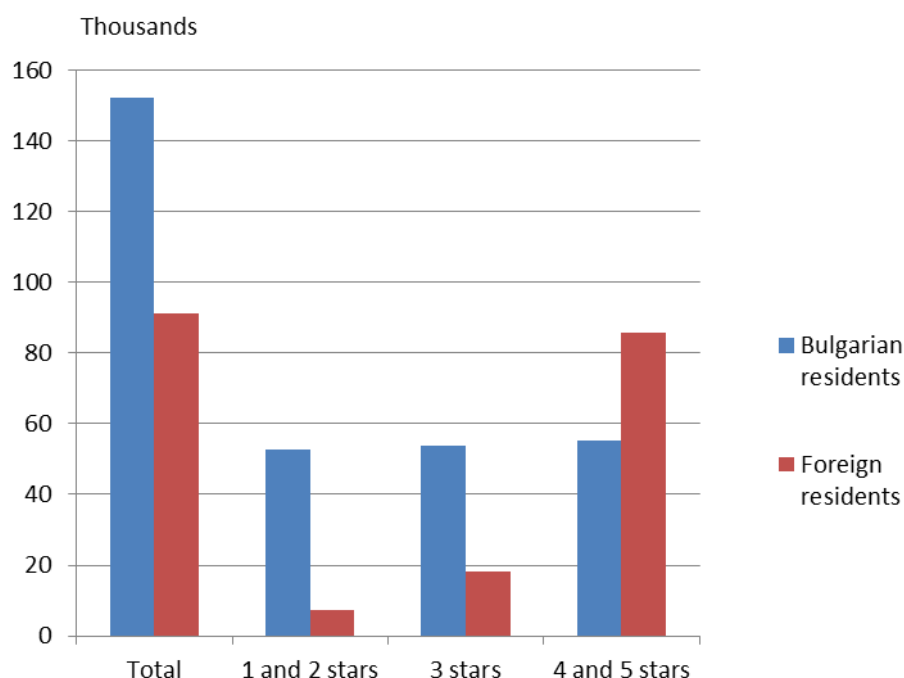


¹ Since January 2012 the survey on accommodation establishments was carried out monthly in compliance with the Regulation 692/2011 of the European Parliament and of the Council concerning European statistics on tourism and the Regulation 1051/2011 of the Commission implementing Regulation 692/2011 of the European Parliament and of the Council concerning European statistics on tourism, as regards the structure of the quality reports and the transmission of the data.



In the reported month the arrivals in all accommodation establishments were 242.9 thousand as the registered Bulgarian residents were 152.9 thousand or 62.6% from whole arrivals. The main part (70.2%) from Bulgarian residents spent the nights in hotels 1, 2 or 3 stars. On the average 2.0 nights were spent by Bulgarians while by the foreigners - 3.2 nights. Almost all foreigners preferred to spend the nights in the hotels as 78.1% of them spent nights in hotels 4 and 5 stars. The share of arrivals of foreigners in private and other accommodations was 2.1%.

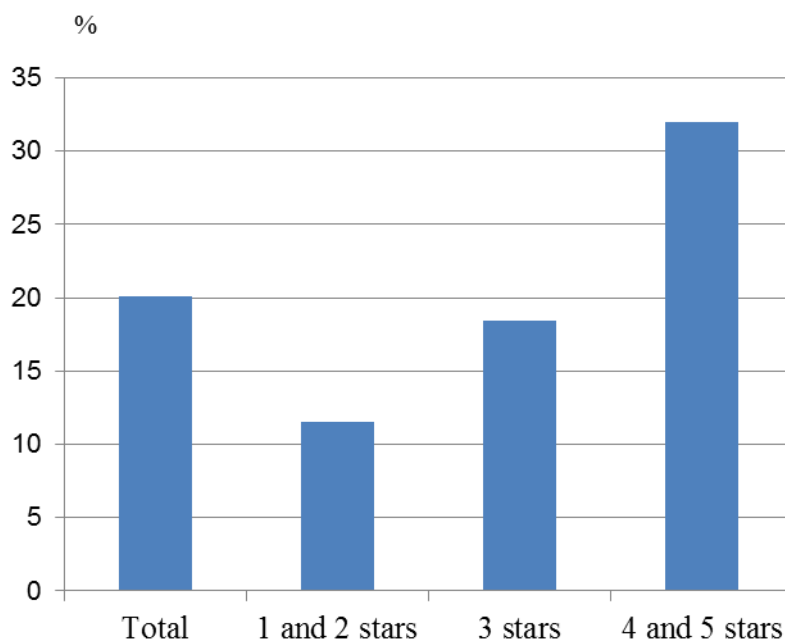
Figure 2. Arrivals in accommodation establishments by categories in January 2012



In January 2012 the total occupancy of the bed-places in accommodation establishments was 20.1% as the highest occupancy in accommodation establishments was recorded in 4 and 5 stars - 32.0%, followed by these with 3 stars - 18.4%. The lowest occupancy in accommodation establishments was observed in 1 and 2 stars - 11.5%.



Figure 3. The occupation of the bed-places in accommodation establishments by categories in January 2012



The accommodation establishments with more than 10 bed-places functioned during the first month of the year were 1 658, from them - 1 180 hotels, 6 camping sites and 472 other establishments for short-term accommodation (Table 1). The total number of the rooms in them was 49.3 thousand and the bed-places were 99.5 thousand.

The total revenues from nights spent reached 29.6 million BGN, as from the foreigners were amounted to 15.3 million BGN and from Bulgarian residents - 14.3 million BGN.



Methodological notes

In the statistical survey of accommodation establishments were included all categorized hotels, camping sites and other type of accommodation establishments with more than 10 bed-places in use during the reporting period.

The indicator other accommodation establishments contained the holiday settlements, hostels, guests houses, bungalows, rest houses, mountain chalets, private rooms and flats and other establishments for short accommodation.



ANNEX

Table 1

ACTIVITY OF ACCOMMODATION ESTABLISHMENTS IN JANUARY 2012¹

Districts	Accommodation establishments - number	Bed-places - number	Available bed-nights ² - number	Nights spent - number		Arrivals in accommodation establishments - number		Revenues from nights spent – BGN	
				Total	Of which: by foreigners	Total	Of which: foreigners	Total	Of which: by foreigners
Total	1658	99493	3051543	613539	303025	242927	90973	29578015	15335314
Blagoevgrad	226	15811	486359	166372	122196	48092	31653	7778913	5599367
Burgas	59	4268	119914	14429	4259	7558	1484	823142	271141
Varna	103	10603	328693	29036	10383	12271	2655	1280120	549827
Veliko Tarnovo	95	4591	142321	13845	1709	8075	1053	500547	89196
Vidin	33	917	29047	4070	836	1956	202	153792	36490
Vratsa	21	860	26660	4391	514	2111	196	118532	24097
Gabrovo	46	2574	69543	9260	490	4680	204	302181	24168
Dobrich	23	1372	42476	3819	430	1878	218	168873	21486
Kardzhali	18	635	19685	1802	382	1196	237	50119	15938
Kyustendil	34	1972	61132	5469	697	3406	402	209064	35127
Lovech	50	2646	81977	8951	863	4002	302	265552	29340
Montana	29	1529	47399	2060	174	1427	110	74726	8618
Pazardzhik	55	4121	127751	24863	1715	11805	523	1212146	109074
Pernik	9	515	15965	1817	461	1190	178	49741	17427
Pleven	14	1049	32519	5799	2432	2507	473	593511	82628
Plovdiv	133	8184	253638	40016	9106	20052	3577	2476916	540128
Razgrad	14	559	17311	2857	398	1297	148	96894	16598
Ruse	45	1691	52421	9601	2366	6398	1418	453882	141989
Silistra	20	630	19530	2277	748	1426	252	86844	30171
Sliven	77	2515	77159	5049	905	2743	399	159141	43992
Smolyan	241	9740	301934	77842	33051	20653	5840	2956507	1438614
Sofia	61	6074	187500	79756	56071	19796	10576	2102182	1165558
Sofia Cap.	112	10362	318041	74274	47207	44789	26439	6433429	4739758
Stara Zagora	28	2271	70401	11369	2046	5486	808	583300	125919
Targovishte	21	871	26939	2099	433	1081	146	62912	14453
Haskovo	39	1406	43245	6650	1649	4028	1022	378889	103081
Shumen	30	985	30205	2515	428	1833	179	98135	25613
Yambol	22	742	21778	3251	1076	1191	279	108025	35516

¹In use.

²The data for the "Available Bed Capacity" item are obtained through accumulation of the number of bed-places for each of the days of the reference period when they are put into utilization, irrespective of whether they are occupied or not.