

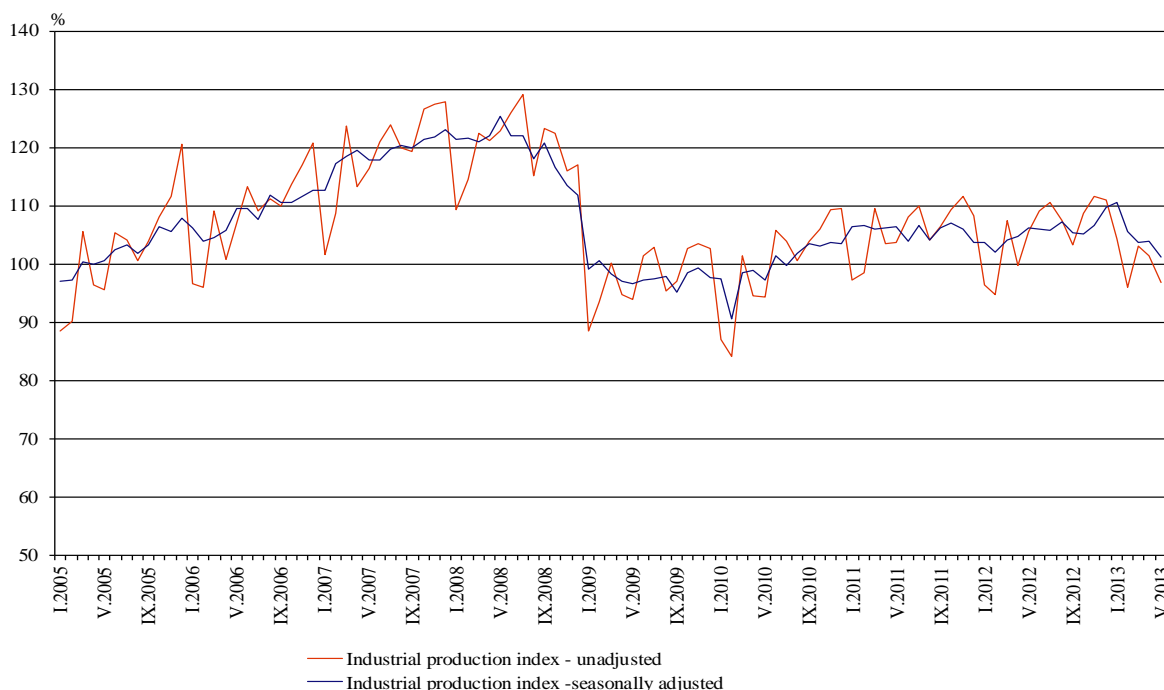


## INDUSTRIAL PRODUCTION INDICES IN MAY 2013<sup>1</sup>

The preliminary data showed that the Industrial Production Index<sup>2</sup>, seasonally adjusted<sup>3</sup>, decreased by 2.7% in May 2013 as compared to April 2013.

In May 2013 working day adjusted<sup>4</sup> Industrial Production Index fall by 6.0% in comparison with the same month of 2012.

**Figure 1. Industrial Production Indices (2010 = 100)**



<sup>1</sup> May 2013 data are preliminary.

<sup>2</sup> Monthly Industrial Production and Industrial turnover indices measure changes in production and turnover values of industrial enterprises. This information can be used to access the current economic development and for short-term forecasts. Indices do not measure the actual production level, it aims to measure the average change in value of production between two points of time.

Indices are compiled on the base of information collected through representative sampling survey on industrial enterprises. The sample covers enterprises with annual turnover more than 97% of total turnover in industry.

Industrial production indices are calculated at constant base year that is to say they are weighted with the structure of the value added at factor costs in the base year.

<sup>3</sup> Seasonal adjustment is a statistical method, which eliminates the seasonal component of time series and it is particularly suitable for long-term comparisons and analysis of the data.

<sup>4</sup> Working day adjustment is an adjustment for variations caused by calendar effects, different number of calendar and working days in the months, national holidays and outliers (for example the presence of more non-working days in May could contribute to the decline in the production in some activities).

The seasonally and working day adjusted data on Industrial production index by months, starting from January 2000 can be found in NSI internet web-site: (<http://www.nsi.bg/otrasalen.php?otr=46>).

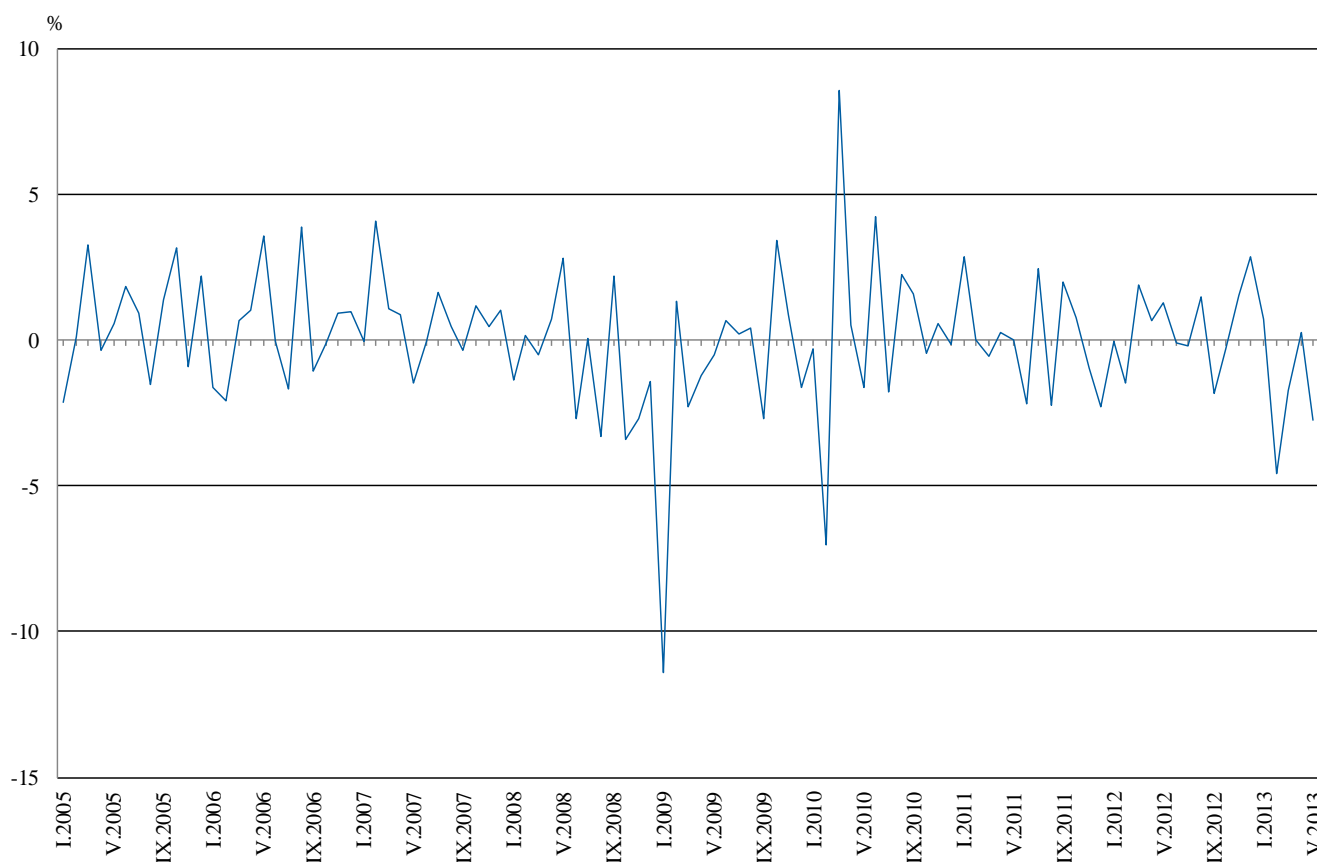


## Monthly comparisons

In May 2013 as compared to April 2013, the seasonally adjusted Industrial Production Index decreased in the manufacturing by 4.1%, while increases were registered in the electricity, gas, steam and air conditioning supply by 3.9% and in the mining and quarrying industry by 1.9%.

The most significant decreases of production in the manufacturing were seen in the manufacture of other transport equipment by 25.6%, in the manufacture of tobacco products by 14.4%, in the manufacture of leather and related products by 10.2%, in the repair and installation of machinery and equipment by 9.3%, in the manufacture of wearing apparel by 6.9%, in the manufacture of food products by 4.2%. There was increase in the manufacture of beverages by 7.2%.

**Figure 2. Percentage changes of Industrial Production Indices compared to the previous month (seasonally adjusted)**



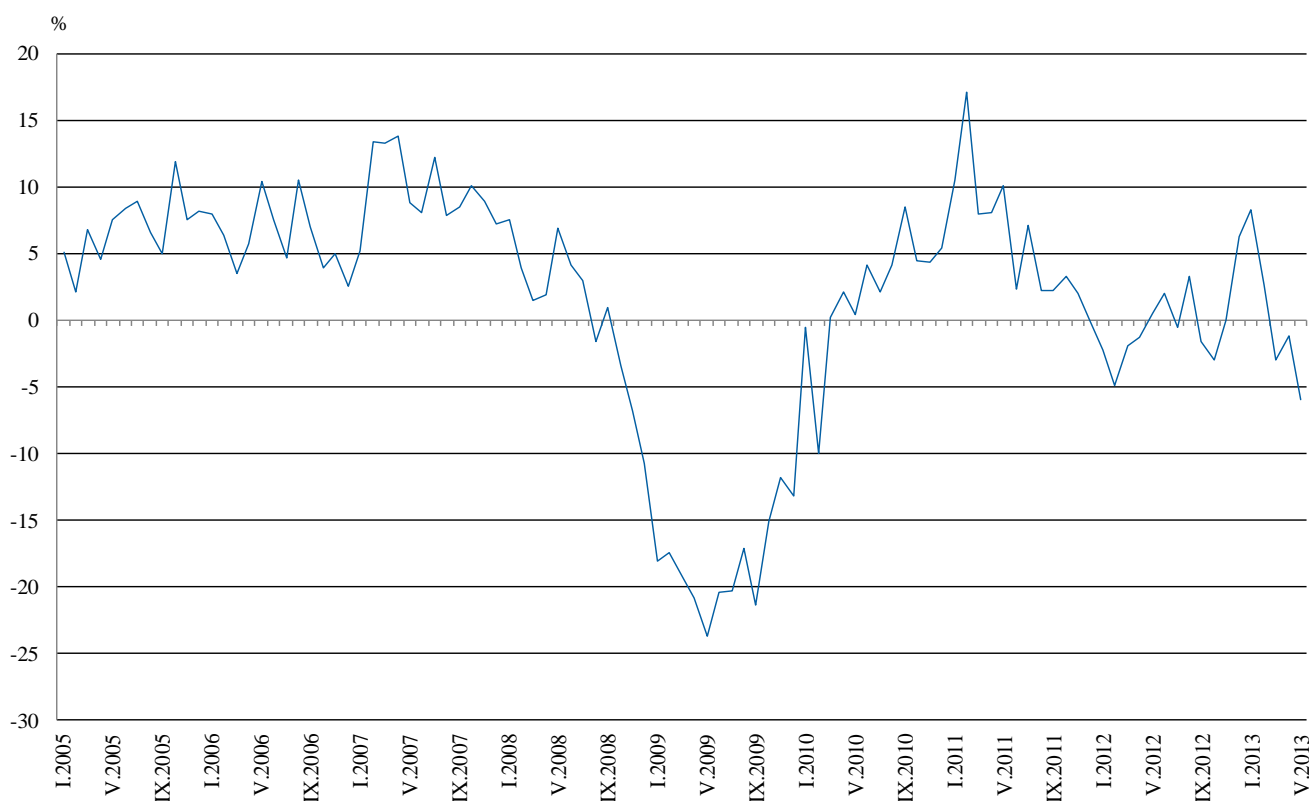


## Annual comparisons

On annual basis in May 2013 Industrial Production Index, calculated from working day adjusted data decreased in the mining and quarrying industry by 14.3%, in the manufacturing by 5.6% and in the electricity, gas, steam and air conditioning supply by 2.8%.

In the manufacturing, the more significant decreases compared to the same month of the previous year were seen in the manufacture of other transport equipment by 36.6%, in the repair and installation of machinery and equipment by 24.0%, in the manufacture of leather and related products by 19.0%, in the manufacture of electrical equipment by 16.0%, in the manufacture of chemicals and chemical products by 13.4%, in the manufacture of tobacco products by 9.0%, in the manufacture of food products by 7.2%. Increases were registered in the printing and reproduction of recorded media by 22.4%, in the manufacture of textiles by 19.0%, in the manufacture of basic pharmaceutical products and pharmaceutical preparations by 13.8%, in the manufacture of beverages by 11.3%.

**Figure 3. Percentage changes of Industrial Production Indices compared to the same month of the previous year  
(Working day adjusted)**



The final data on Industrial Production and Turnover Indices for April 2013 can be found in NSI internet web-site: (<http://www.nsi.bg/otrasalen.php?otr=46>).

Annex

Table 1

Percentage changes of Industrial Production Indices compared to the previous month<sup>1</sup>

| Economic Activities   | NACE.BG -<br>2008 Code | 2012        | 2013        |              |              |             |             |
|---|------------------------|-------------|-------------|--------------|--------------|-------------|-------------|
|   |                        | XII         | I           | II           | III          | IV          | V           |
| <b>Industry</b>   | <b>B_TO_E36</b>        | <b>2.9</b>  | <b>0.7</b>  | <b>-4.6</b>  | <b>-1.7</b>  | <b>0.3</b>  | <b>-2.7</b> |
| <b>Mining and quarrying</b>   | <b>B</b>               | <b>33.6</b> | <b>-7.2</b> | <b>-5.5</b>  | <b>-10.7</b> | <b>0.5</b>  | <b>1.9</b>  |
| of which:   |                        |             |             |              |              |             |             |
| Mining of coal and lignite  | B05                    | 39.1        | -10.8       | -12.2        | -32.8        | 31.5        | -24.5       |
| Mining of metal ores  | B07                    | 43.9        | -19.2       | 3.9          | 4.3          | -10.7       | 11.2        |
| Other mining and quarrying  | B08                    | -16.7       | -5.8        | 4.1          | 5.0          | 5.9         | 9.4         |
| <b>Manufacturing</b>  | <b>C</b>               | <b>-0.1</b> | <b>3.4</b>  | <b>-1.7</b>  | <b>-2.6</b>  | <b>2.0</b>  | <b>-4.1</b> |
| of which:   |                        |             |             |              |              |             |             |
| Manufacture of food products  | C10                    | -0.7        | 1.7         | -6.2         | -0.5         | 5.2         | -4.2        |
| Manufacture of beverages  | C11                    | -8.2        | 21.1        | -9.9         | -1.2         | 3.4         | 7.2         |
| Manufacture of tobacco products   | C12                    | 47.7        | 3.7         | 6.5          | 15.0         | 2.7         | -14.4       |
| Manufacture of textiles   | C13                    | 7.9         | 4.5         | -10.9        | 3.7          | 2.1         | -1.9        |
| Manufacture of wearing apparel  | C14                    | -0.8        | 4.6         | -0.7         | -2.7         | 6.9         | -6.9        |
| Manufacture of leather and related products   | C15                    | -9.9        | 8.9         | -5.2         | 1.0          | 8.6         | -10.2       |
| Manufacture of wood and of products of wood and cork, except furniture; manufacture of articles of straw and plaiting materials | C16                    | -10.1       | 14.5        | -4.1         | 2.6          | 4.7         | -6.3        |
| Manufacture of paper and paper products   | C17                    | 3.2         | -0.2        | 6.9          | 2.1          | 0.0         | -2.9        |
| Printing and reproduction of recorded media   | C18                    | -7.0        | 1.3         | 1.0          | 4.3          | 15.6        | -5.0        |
| Manufacture of chemicals and chemical products  | C20                    | -2.3        | 9.4         | -6.9         | -1.7         | 4.0         | -2.2        |
| Manufacture of basic pharmaceutical products and pharmaceutical preparations  | C21                    | 1.0         | 14.3        | -2.7         | -0.8         | 4.1         | -0.3        |
| Manufacture of rubber and plastic products  | C22                    | -13.3       | 21.3        | 1.3          | -9.9         | 9.6         | -6.1        |
| Manufacture of other non-metallic mineral products  | C23                    | -11.2       | 11.1        | -7.3         | -0.1         | 5.5         | -2.5        |
| Manufacture of basic metals   | C24                    | -5.7        | 64.2        | -38.7        | 0.5          | 2.0         | 1.5         |
| Manufacture of fabricated metal products, except machinery and equipment  | C25                    | -0.6        | 9.1         | -13.1        | 6.9          | -3.9        | -3.2        |
| Manufacture of computer, electronic and optical products  | C26                    | -19.3       | 18.1        | 15.6         | -19.3        | 14.7        | -7.8        |
| Manufacture of electrical equipment   | C27                    | 9.0         | -7.1        | -4.2         | -2.9         | 0.1         | -8.2        |
| Manufacture of machinery and equipment n.e.c.   | C28                    | 1.8         | 6.2         | -1.6         | 4.6          | 1.1         | -5.5        |
| Manufacture of motor vehicles, trailers and semi-trailers   | C29                    | -13.8       | 18.3        | 7.1          | -5.0         | 3.1         | -9.2        |
| Manufacture of other transport equipment  | C30                    | 22.3        | 28.1        | -18.1        | -28.4        | 19.2        | -25.6       |
| Manufacture of furniture  | C31                    | 0.3         | 8.5         | -0.2         | -7.4         | 4.9         | -8.2        |
| Other manufacturing   | C32                    | -0.9        | 17.8        | 4.7          | 5.5          | -6.7        | -6.5        |
| Repair and installation of machinery and equipment  | C32                    | -8.1        | -11.2       | 0.5          | -7.3         | 4.8         | -9.3        |
| <b>Electricity, gas, steam and air conditioning supply</b>  | <b>D</b>               | <b>7.1</b>  | <b>-1.1</b> | <b>-16.9</b> | <b>3.7</b>   | <b>-6.8</b> | <b>3.9</b>  |
| Electricity, gas, steam and air conditioning supply   | D35                    | 7.1         | -1.1        | -16.9        | 3.7          | -6.8        | 3.9         |

<sup>1</sup> Seasonally adjusted.



Table 2

**Percentage changes of Industrial Production Indices compared to the same month of the previous year<sup>1</sup>**

| Economic Activities   | NACE.BG<br>-2008 Code | 2012        | 2013        |             |              |              |              |
|---|-----------------------|-------------|-------------|-------------|--------------|--------------|--------------|
|   |                       | XII         | I           | II          | III          | IV           | V            |
| <b>Industry</b>   | <b>B_TO_E36</b>       | <b>6.3</b>  | <b>8.3</b>  | <b>2.7</b>  | <b>-3.0</b>  | <b>-1.2</b>  | <b>-6.0</b>  |
| <b>Mining and quarrying</b>   | <b>B</b>              | <b>-5.9</b> | <b>-5.9</b> | <b>-6.1</b> | <b>-21.4</b> | <b>-13.1</b> | <b>-14.3</b> |
| of which:   |                       |             |             |             |              |              |              |
| Mining of coal and lignite  | B05                   | -1.3        | -0.7        | -18.5       | -57.0        | -29.3        | -58.7        |
| Mining of metal ores  | B07                   | -8.3        | -6.3        | 7.7         | 1.8          | -9.2         | 18.4         |
| Other mining and quarrying  | B08                   | 8.1         | -1.8        | 17.3        | 8.1          | 8.5          | 26.4         |
| <b>Manufacturing</b>  | <b>C</b>              | <b>2.3</b>  | <b>6.1</b>  | <b>7.3</b>  | <b>-2.7</b>  | <b>1.7</b>   | <b>-5.6</b>  |
| of which:   |                       |             |             |             |              |              |              |
| Manufacture of food products  | C10                   | -0.9        | 2.0         | -10.6       | -12.2        | -4.3         | -7.2         |
| Manufacture of beverages  | C11                   | -8.2        | 24.6        | 5.2         | -6.2         | -1.0         | 11.3         |
| Manufacture of tobacco products   | C12                   | 3.7         | -6.4        | 0.3         | 16.3         | 33.4         | -9.0         |
| Manufacture of textiles   | C13                   | 12.4        | 25.7        | 10.0        | 13.1         | 12.6         | 19.0         |
| Manufacture of wearing apparel  | C14                   | 0.9         | 5.4         | 11.4        | -1.4         | 12.7         | 4.6          |
| Manufacture of leather and related products   | C15                   | -25.9       | -9.6        | -11.8       | -12.7        | 7.9          | -19.0        |
| Manufacture of wood and of products of wood and cork, except furniture; manufacture of articles of straw and plaiting materials | C16                   | -14.7       | 4.8         | 13.6        | 7.5          | 8.5          | -8.7         |
| Manufacture of paper and paper products   | C17                   | 86.4        | 47.0        | 41.3        | 13.3         | 8.8          | 7.3          |
| Printing and reproduction of recorded media   | C18                   | 2.1         | 3.6         | 3.3         | 4.3          | 28.7         | 22.4         |
| Manufacture of chemicals and chemical products  | C20                   | -15.3       | -8.0        | -9.1        | -16.2        | 7.8          | -13.4        |
| Manufacture of basic pharmaceutical products and pharmaceutical preparations  | C21                   | -6.2        | 29.2        | 14.3        | 14.7         | 14.2         | 13.8         |
| Manufacture of rubber and plastic products  | C22                   | 1.6         | 15.0        | 29.2        | 6.5          | 12.0         | 2.1          |
| Manufacture of other non-metallic mineral products  | C23                   | -3.5        | 8.7         | 43.1        | 1.7          | 4.7          | 7.0          |
| Manufacture of basic metals   | C24                   | -12.5       | 27.9        | -11.3       | 3.4          | -15.2        | 0.5          |
| Manufacture of fabricated metal products, except machinery and equipment  | C25                   | 10.0        | 11.8        | -2.2        | 1.1          | 1.8          | -14.8        |
| Manufacture of computer, electronic and optical products  | C26                   | 2.2         | -12.6       | 16.9        | -8.1         | 0.3          | -8.4         |
| Manufacture of electrical equipment   | C27                   | 31.6        | 19.8        | 10.5        | -0.3         | -5.9         | -16.0        |
| Manufacture of machinery and equipment n.e.c.   | C28                   | 15.9        | 8.8         | 5.7         | 6.5          | 10.2         | 0.2          |
| Manufacture of motor vehicles, trailers and semi-trailers   | C29                   | -5.8        | 21.2        | 30.2        | 22.6         | 23.6         | 10.7         |
| Manufacture of other transport equipment  | C30                   | 47.3        | 9.6         | -5.5        | -45.9        | -26.5        | -36.6        |
| Manufacture of furniture  | C31                   | 6.3         | 19.4        | 32.6        | 11.9         | 18.7         | -3.0         |
| Other manufacturing   | C32                   | 22.8        | 2.9         | 47.7        | 31.3         | 15.0         | 4.7          |
| Repair and installation of machinery and equipment  | C33                   | 7.4         | -5.7        | -12.8       | -10.0        | -4.2         | -24.0        |
| <b>Electricity, gas, steam and air conditioning supply</b>  | <b>D</b>              | <b>17.0</b> | <b>18.4</b> | <b>-5.2</b> | <b>4.7</b>   | <b>-2.6</b>  | <b>-2.8</b>  |
| Electricity, gas, steam and air conditioning supply   | D35                   | 17.0        | 18.4        | -5.2        | 4.7          | -2.6         | -2.8         |

<sup>1</sup> Working day adjusted.



Table 3

**Industrial Production Indices**  
(Seasonally adjusted, 2010 = 100)

| NACE.BG -<br>2008 Code | 2012         |              |              |              |              |              |              |              | 2013         |              |              |              |              |
|------------------------|--------------|--------------|--------------|--------------|--------------|--------------|--------------|--------------|--------------|--------------|--------------|--------------|--------------|
|                        | V            | VI           | VII          | VIII         | IX           | X            | XI           | XII          | I            | II           | III          | IV           | V            |
| <b>B_TO_E36</b>        | <b>106.1</b> | <b>106.0</b> | <b>105.7</b> | <b>107.3</b> | <b>105.3</b> | <b>105.0</b> | <b>106.7</b> | <b>109.7</b> | <b>110.6</b> | <b>105.5</b> | <b>103.7</b> | <b>103.9</b> | <b>101.1</b> |
| <b>B</b>               | <b>103.9</b> | <b>105.3</b> | <b>113.0</b> | <b>112.1</b> | <b>112.7</b> | <b>110.8</b> | <b>82.3</b>  | <b>109.9</b> | <b>102.0</b> | <b>96.4</b>  | <b>86.1</b>  | <b>86.5</b>  | <b>88.2</b>  |
| <b>B05</b>             | 116.0        | 92.3         | 113.1        | 113.1        | 117.3        | 108.5        | 83.5         | 116.1        | 103.6        | 91.0         | 61.2         | 80.4         | 60.7         |
| <b>B07</b>             | 82.8         | 112.4        | 96.4         | 99.7         | 98.1         | 108.3        | 78.3         | 112.7        | 91.1         | 94.6         | 98.7         | 88.2         | 98.0         |
| <b>B08</b>             | 100.3        | 120.2        | 140.4        | 121.8        | 126.1        | 123.6        | 124.0        | 103.3        | 97.3         | 101.3        | 106.4        | 112.7        | 123.3        |
| <b>C</b>               | <b>107.3</b> | <b>106.8</b> | <b>105.1</b> | <b>106.3</b> | <b>103.9</b> | <b>104.5</b> | <b>105.8</b> | <b>105.6</b> | <b>109.2</b> | <b>107.4</b> | <b>104.5</b> | <b>106.6</b> | <b>102.3</b> |
| <b>C10</b>             | 95.3         | 93.4         | 94.9         | 95.3         | 90.9         | 92.5         | 91.9         | 91.3         | 92.9         | 87.1         | 86.7         | 91.2         | 87.3         |
| <b>C11</b>             | 101.1        | 102.2        | 100.0        | 97.2         | 100.0        | 102.5        | 97.6         | 89.6         | 108.5        | 97.8         | 96.6         | 99.8         | 107.0        |
| <b>C12</b>             | 135.4        | 145.6        | 138.7        | 120.6        | 133.8        | 83.3         | 78.2         | 115.4        | 119.7        | 127.5        | 146.6        | 150.5        | 128.9        |
| <b>C13</b>             | 85.4         | 82.1         | 79.1         | 85.1         | 87.3         | 90.0         | 95.2         | 102.8        | 107.4        | 95.7         | 99.2         | 101.3        | 99.4         |
| <b>C14</b>             | 92.8         | 99.9         | 92.3         | 95.4         | 91.0         | 89.8         | 96.7         | 96.0         | 100.4        | 99.7         | 97.0         | 103.7        | 96.6         |
| <b>C15</b>             | 91.7         | 96.4         | 86.5         | 93.2         | 82.0         | 74.5         | 81.8         | 73.7         | 80.2         | 76.0         | 76.8         | 83.4         | 74.9         |
| <b>C16</b>             | 111.4        | 104.4        | 105.1        | 99.1         | 95.2         | 100.5        | 101.2        | 91.0         | 104.2        | 99.9         | 102.5        | 107.3        | 100.5        |
| <b>C17</b>             | 110.3        | 105.5        | 112.7        | 105.7        | 106.2        | 103.3        | 106.8        | 110.2        | 110.0        | 117.6        | 120.0        | 119.9        | 116.5        |
| <b>C18</b>             | 92.7         | 90.7         | 87.3         | 84.2         | 85.3         | 84.9         | 100.7        | 93.6         | 94.8         | 95.8         | 99.9         | 115.6        | 109.8        |
| <b>C20</b>             | 113.4        | 107.5        | 97.1         | 101.2        | 102.5        | 98.6         | 97.4         | 95.2         | 104.2        | 97.0         | 95.4         | 99.2         | 97.0         |
| <b>C21</b>             | 126.6        | 127.3        | 142.5        | 124.6        | 132.7        | 125.0        | 121.2        | 122.4        | 139.9        | 136.1        | 135.1        | 140.6        | 140.2        |
| <b>C22</b>             | 107.5        | 108.1        | 102.0        | 107.7        | 105.5        | 105.0        | 110.1        | 95.4         | 115.8        | 117.2        | 105.7        | 115.8        | 108.7        |
| <b>C23</b>             | 105.4        | 104.3        | 106.6        | 107.9        | 104.0        | 111.2        | 118.9        | 105.6        | 117.4        | 108.8        | 108.7        | 114.7        | 111.8        |
| <b>C24</b>             | 98.9         | 99.2         | 96.3         | 91.7         | 95.0         | 92.6         | 95.9         | 90.4         | 148.5        | 91.0         | 91.4         | 93.2         | 94.6         |
| <b>C25</b>             | 114.0        | 97.9         | 94.2         | 99.2         | 93.3         | 104.2        | 103.0        | 102.4        | 111.7        | 97.1         | 103.8        | 99.7         | 96.4         |
| <b>C26</b>             | 136.8        | 141.3        | 110.1        | 111.7        | 118.3        | 104.2        | 130.2        | 105.1        | 124.1        | 143.5        | 115.9        | 132.9        | 122.5        |
| <b>C27</b>             | 129.8        | 131.2        | 126.8        | 125.2        | 127.1        | 129.7        | 129.4        | 141.0        | 130.9        | 125.4        | 121.8        | 121.9        | 111.8        |
| <b>C28</b>             | 131.4        | 128.3        | 123.4        | 131.1        | 120.1        | 119.6        | 122.9        | 125.1        | 132.8        | 130.6        | 136.6        | 138.1        | 130.5        |
| <b>C29</b>             | 82.4         | 84.4         | 86.5         | 85.5         | 94.7         | 92.8         | 94.6         | 81.6         | 96.6         | 103.4        | 98.2         | 101.2        | 91.9         |
| <b>C30</b>             | 88.5         | 139.9        | 90.2         | 74.5         | 80.0         | 114.2        | 77.9         | 95.3         | 122.1        | 100.0        | 71.6         | 85.4         | 63.5         |
| <b>C31</b>             | 117.1        | 114.1        | 113.3        | 115.7        | 118.7        | 115.5        | 116.5        | 116.9        | 126.8        | 126.5        | 117.2        | 123.0        | 112.9        |
| <b>C32</b>             | 133.5        | 123.3        | 121.8        | 138.4        | 138.0        | 137.1        | 121.6        | 120.5        | 141.9        | 148.6        | 156.7        | 146.3        | 136.8        |
| <b>C33</b>             | 98.4         | 89.8         | 78.7         | 97.3         | 71.0         | 94.2         | 104.9        | 96.4         | 85.6         | 86.0         | 79.7         | 83.5         | 75.8         |
| <b>D</b>               | <b>104.0</b> | <b>103.6</b> | <b>112.2</b> | <b>113.3</b> | <b>105.1</b> | <b>104.3</b> | <b>116.0</b> | <b>124.2</b> | <b>122.9</b> | <b>102.1</b> | <b>106.0</b> | <b>98.8</b>  | <b>102.6</b> |
| <b>D35</b>             | 104.0        | 103.6        | 112.2        | 113.3        | 105.1        | 104.3        | 116.0        | 124.2        | 122.9        | 102.1        | 106.0        | 98.8         | 102.6        |



Table 4

**Industrial Production Indices**  
(Working day adjusted, 2010 = 100)

| NACE.BG -<br>2008 Code | 2010        | 2011         | 2012         |              |              |              |              |              |              |              | 2013         |              |              |              |              |
|------------------------|-------------|--------------|--------------|--------------|--------------|--------------|--------------|--------------|--------------|--------------|--------------|--------------|--------------|--------------|--------------|
|                        | V           | V            | V            | VI           | VII          | VIII         | IX           | X            | XI           | XII          | I            | II           | III          | IV           | V            |
| <b>B_TO_E36</b>        | <b>93.7</b> | <b>103.2</b> | <b>103.8</b> | <b>109.6</b> | <b>110.8</b> | <b>106.4</b> | <b>104.6</b> | <b>107.6</b> | <b>110.7</b> | <b>113.7</b> | <b>103.6</b> | <b>96.3</b>  | <b>103.5</b> | <b>100.7</b> | <b>97.5</b>  |
| <b>B</b>               | <b>91.8</b> | <b>112.3</b> | <b>97.7</b>  | <b>101.0</b> | <b>112.7</b> | <b>109.7</b> | <b>116.5</b> | <b>124.3</b> | <b>89.4</b>  | <b>117.9</b> | <b>95.3</b>  | <b>89.9</b>  | <b>83.5</b>  | <b>80.9</b>  | <b>83.8</b>  |
| <b>B05</b>             | 77.3        | 131.4        | 104.8        | 73.7         | 111.0        | 108.1        | 123.6        | 130.7        | 96.9         | 128.9        | 110.4        | 87.8         | 49.9         | 58.0         | 43.2         |
| <b>B07</b>             | 101.0       | 88.9         | 82.8         | 112.4        | 96.4         | 99.7         | 98.1         | 108.3        | 78.3         | 112.7        | 91.1         | 94.6         | 98.7         | 88.2         | 98.0         |
| <b>B08</b>             | 106.0       | 109.0        | 104.0        | 131.4        | 156.0        | 131.7        | 139.6        | 143.2        | 140.1        | 109.9        | 62.7         | 72.6         | 95.9         | 109.7        | 131.4        |
| <b>C</b>               | <b>98.5</b> | <b>106.4</b> | <b>110.2</b> | <b>117.3</b> | <b>112.6</b> | <b>106.6</b> | <b>106.8</b> | <b>109.3</b> | <b>110.3</b> | <b>101.7</b> | <b>93.5</b>  | <b>92.6</b>  | <b>103.5</b> | <b>108.1</b> | <b>104.0</b> |
| <b>C10</b>             | 101.4       | 91.6         | 92.6         | 95.9         | 96.2         | 98.9         | 98.5         | 101.8        | 97.9         | 95.6         | 77.7         | 75.1         | 85.4         | 87.8         | 85.9         |
| <b>C11</b>             | 104.0       | 105.6        | 109.2        | 124.7        | 126.9        | 121.8        | 109.6        | 94.3         | 89.6         | 93.0         | 69.4         | 63.2         | 89.4         | 97.0         | 121.5        |
| <b>C12</b>             | 101.0       | 105.8        | 145.0        | 173.2        | 160.2        | 122.9        | 139.7        | 98.5         | 86.2         | 111.4        | 89.5         | 95.2         | 142.2        | 141.6        | 131.9        |
| <b>C13</b>             | 108.7       | 123.5        | 93.4         | 93.8         | 83.5         | 68.0         | 82.3         | 89.1         | 100.4        | 90.8         | 91.7         | 91.8         | 110.5        | 111.8        | 111.1        |
| <b>C14</b>             | 88.9        | 93.9         | 83.7         | 108.3        | 106.9        | 95.3         | 88.0         | 87.3         | 96.2         | 97.5         | 101.7        | 99.1         | 93.8         | 99.2         | 87.5         |
| <b>C15</b>             | 76.0        | 87.3         | 80.6         | 108.1        | 107.5        | 96.6         | 89.9         | 74.4         | 79.7         | 65.9         | 79.4         | 71.8         | 75.3         | 71.7         | 65.3         |
| <b>C16</b>             | 94.0        | 94.1         | 110.5        | 114.5        | 116.9        | 103.2        | 105.5        | 114.4        | 111.5        | 86.6         | 80.1         | 78.9         | 96.8         | 104.8        | 100.9        |
| <b>C17</b>             | 95.3        | 129.2        | 112.8        | 115.4        | 120.3        | 106.5        | 109.1        | 98.2         | 102.5        | 105.3        | 100.3        | 110.6        | 126.9        | 125.9        | 121.0        |
| <b>C18</b>             | 96.7        | 89.8         | 87.1         | 94.0         | 86.7         | 84.8         | 89.1         | 93.4         | 112.7        | 107.6        | 79.4         | 84.7         | 95.0         | 111.9        | 106.6        |
| <b>C20</b>             | 92.7        | 120.8        | 111.8        | 111.9        | 97.7         | 95.4         | 103.3        | 95.9         | 100.6        | 94.2         | 97.2         | 91.2         | 105.2        | 102.6        | 96.8         |
| <b>C21</b>             | 95.8        | 103.9        | 122.3        | 146.2        | 133.0        | 121.2        | 134.9        | 136.3        | 126.4        | 120.1        | 112.9        | 137.4        | 139.2        | 140.1        | 139.3        |
| <b>C22</b>             | 95.0        | 106.4        | 105.8        | 118.0        | 112.0        | 112.2        | 113.0        | 117.8        | 118.7        | 86.7         | 93.8         | 98.4         | 104.2        | 113.6        | 108.0        |
| <b>C23</b>             | 112.3       | 115.1        | 112.7        | 116.8        | 116.9        | 112.6        | 113.7        | 126.1        | 129.3        | 88.6         | 83.1         | 86.9         | 104.7        | 120.2        | 120.5        |
| <b>C24</b>             | 105.7       | 121.7        | 100.7        | 99.5         | 113.2        | 80.6         | 89.4         | 97.5         | 109.8        | 68.3         | 139.2        | 88.8         | 89.0         | 104.4        | 101.2        |
| <b>C25</b>             | 91.7        | 108.3        | 112.4        | 105.0        | 97.3         | 98.4         | 95.2         | 104.8        | 108.8        | 120.7        | 81.5         | 85.5         | 106.9        | 99.3         | 95.7         |
| <b>C26</b>             | 83.2        | 122.0        | 133.2        | 150.0        | 108.8        | 101.0        | 125.4        | 104.9        | 136.9        | 129.9        | 106.2        | 127.1        | 118.0        | 130.7        | 122.0        |
| <b>C27</b>             | 91.0        | 98.6         | 126.3        | 143.4        | 136.5        | 110.5        | 131.2        | 140.9        | 140.5        | 136.3        | 114.0        | 111.1        | 118.3        | 121.0        | 106.1        |
| <b>C28</b>             | 91.7        | 115.5        | 130.5        | 143.8        | 132.4        | 122.2        | 120.9        | 123.7        | 126.9        | 119.2        | 112.7        | 123.8        | 147.1        | 138.4        | 130.8        |
| <b>C29</b>             | 101.9       | 101.6        | 84.5         | 89.8         | 85.9         | 74.8         | 95.8         | 99.1         | 105.4        | 75.6         | 89.8         | 96.8         | 101.7        | 104.8        | 93.5         |
| <b>C30</b>             | 159.6       | 205.2        | 122.1        | 173.5        | 93.4         | 69.1         | 77.5         | 99.9         | 67.5         | 102.1        | 77.6         | 82.0         | 71.8         | 79.3         | 77.3         |
| <b>C31</b>             | 89.6        | 107.3        | 114.2        | 120.9        | 117.6        | 116.9        | 122.4        | 126.3        | 125.9        | 123.8        | 105.3        | 110.0        | 116.0        | 118.2        | 110.7        |
| <b>C32</b>             | 96.9        | 121.3        | 134.0        | 140.0        | 121.7        | 141.4        | 149.3        | 160.3        | 128.7        | 109.5        | 115.1        | 128.2        | 154.6        | 141.3        | 140.3        |
| <b>C33</b>             | 77.6        | 75.0         | 92.0         | 93.8         | 78.7         | 97.2         | 73.6         | 98.6         | 116.9        | 133.0        | 58.5         | 72.2         | 78.1         | 76.2         | 69.9         |
| <b>D</b>               | <b>78.2</b> | <b>91.5</b>  | <b>86.8</b>  | <b>89.3</b>  | <b>104.3</b> | <b>103.9</b> | <b>92.1</b>  | <b>98.3</b>  | <b>124.6</b> | <b>149.7</b> | <b>141.9</b> | <b>112.3</b> | <b>115.5</b> | <b>89.2</b>  | <b>84.4</b>  |
| <b>D35</b>             | 78.2        | 91.5         | 86.8         | 89.3         | 104.3        | 103.9        | 92.1         | 98.3         | 124.6        | 149.7        | 141.9        | 112.3        | 115.5        | 89.2         | 84.4         |