

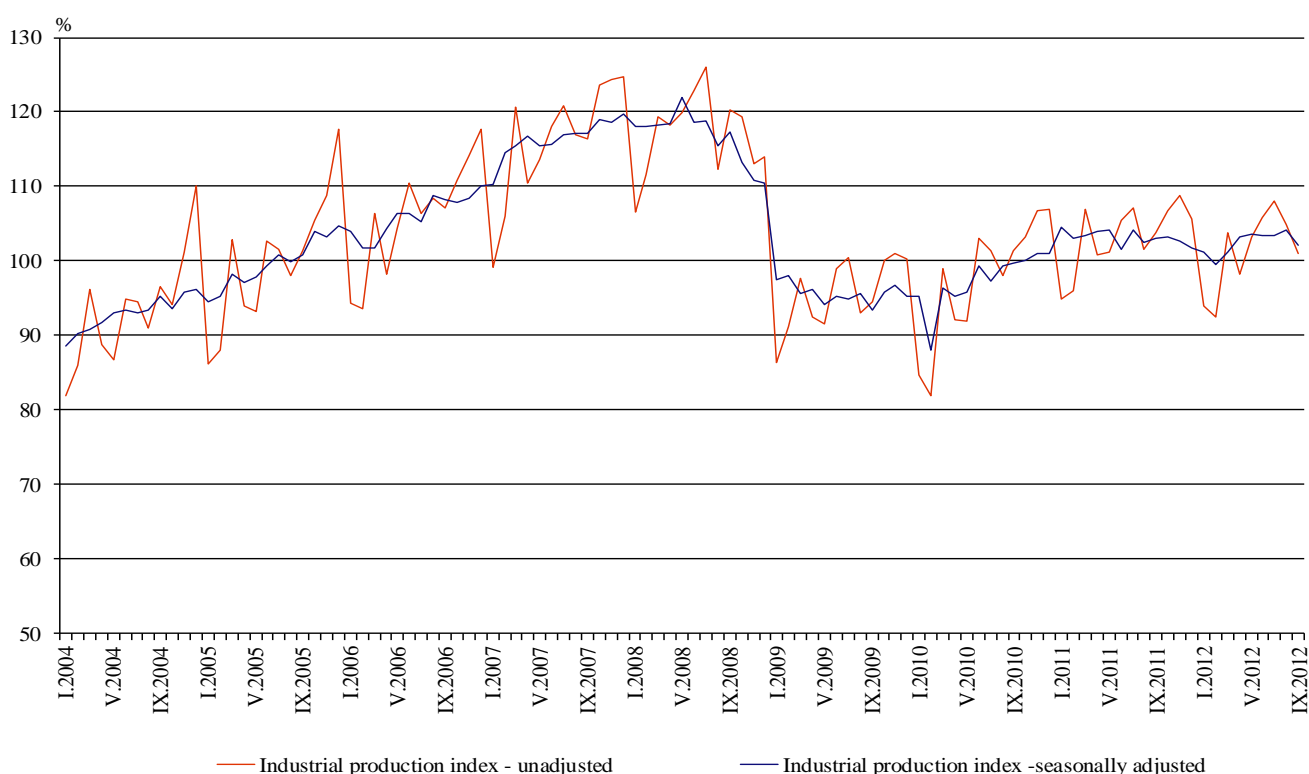


## INDUSTRIAL PRODUCTION INDICES IN SEPTEMBER 2012<sup>1</sup>

The preliminary data showed that the Industrial Production Index<sup>2</sup>, seasonally adjusted<sup>3</sup>, decreased by 1.8% in September 2012 as compared to August 2012.

In September 2012 working day adjusted<sup>4</sup> Industrial Production Index fell by 1.3% in comparison with the same month of 2011.

**Figure 1. Industrial Production Indices (2005=100)**



<sup>1</sup> September 2012 data are preliminary.

<sup>2</sup> Monthly Industrial Production and Industrial turnover indices measure changes in production and turnover values of industrial enterprises. This information can be used to access the current economic development and for short-term forecasts. Indices do not measure the actual production level, it aims to measure the average change in value of production between two points of time. Indices are compiled on the base of information collected through representative sampling survey on industrial enterprises. The sample covers enterprises with annual turnover more than 97% of total turnover in industry.

Industrial production indices are calculated at constant base year (2005) that is to say they are weighted with the structure of the value added at factor costs in the base year.

<sup>3</sup> Seasonal adjustment is a statistical method, which eliminates the seasonal component of time series and it is particularly suitable for long-term comparisons and analysis of the data.

<sup>4</sup> Working day adjustment is an adjustment for variations caused by calendar effects, different number of calendar and working days in the months, national holidays and outliers (for example the presence of more non-working days in May could contribute to the decline in the production in some activities).

The seasonally and working day adjusted data on Industrial production index by months, starting from January 2000 can be found in NSI internet web-site: (<http://www.nsi.bg/otrasalen.php?otr=46>).

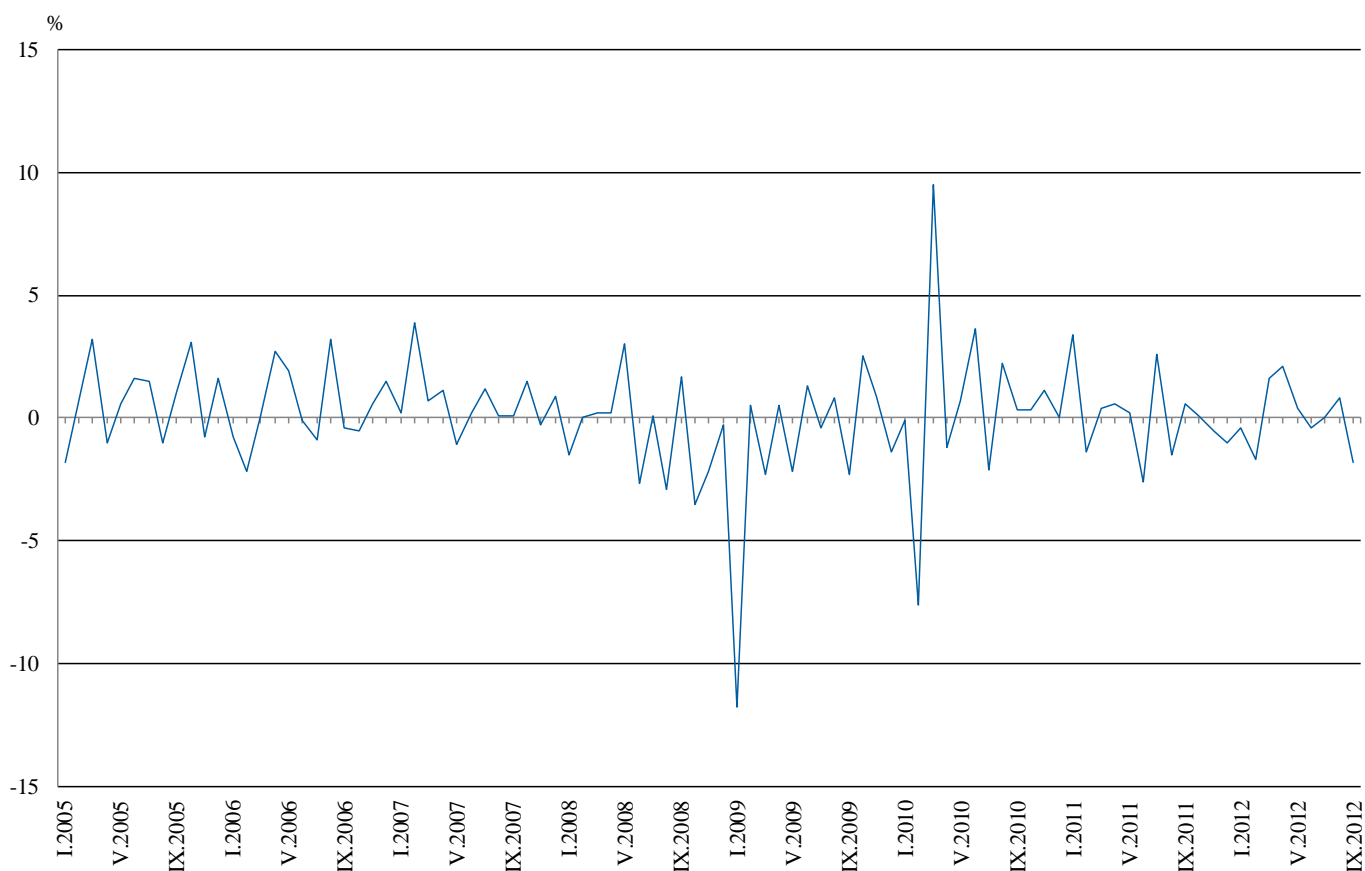


## Monthly comparisons

In September 2012 as compared to August 2012, the seasonally adjusted Industrial Production Index in the electricity, gas, steam and air conditioning supply decreased by 4.7% and in the manufacturing by 2.5%, while in the mining and quarrying industry an increase by 0.6% was seen.

The most significant decreases of production in the manufacturing were seen in the repair and installation of machinery and equipment by 27.2%, in the manufacture of leather and related products by 13.0%, in the manufacture of machinery and equipment by 8.8%, in the manufacture of fabricated metal products, except machinery and equipment by 6.0%, in the manufacture of wearing apparel by 5.7%, in the manufacture of food products by 4.1%. There was increase in the manufacture of tobacco products by 11.2%, in the manufacture of basic metals by 10.0%, in the manufacture of basic pharmaceutical products and pharmaceutical preparations by 6.3%.

**Figure 2. Percentage changes of Industrial Production Indices compared to the previous month**  
(Seasonally adjusted)



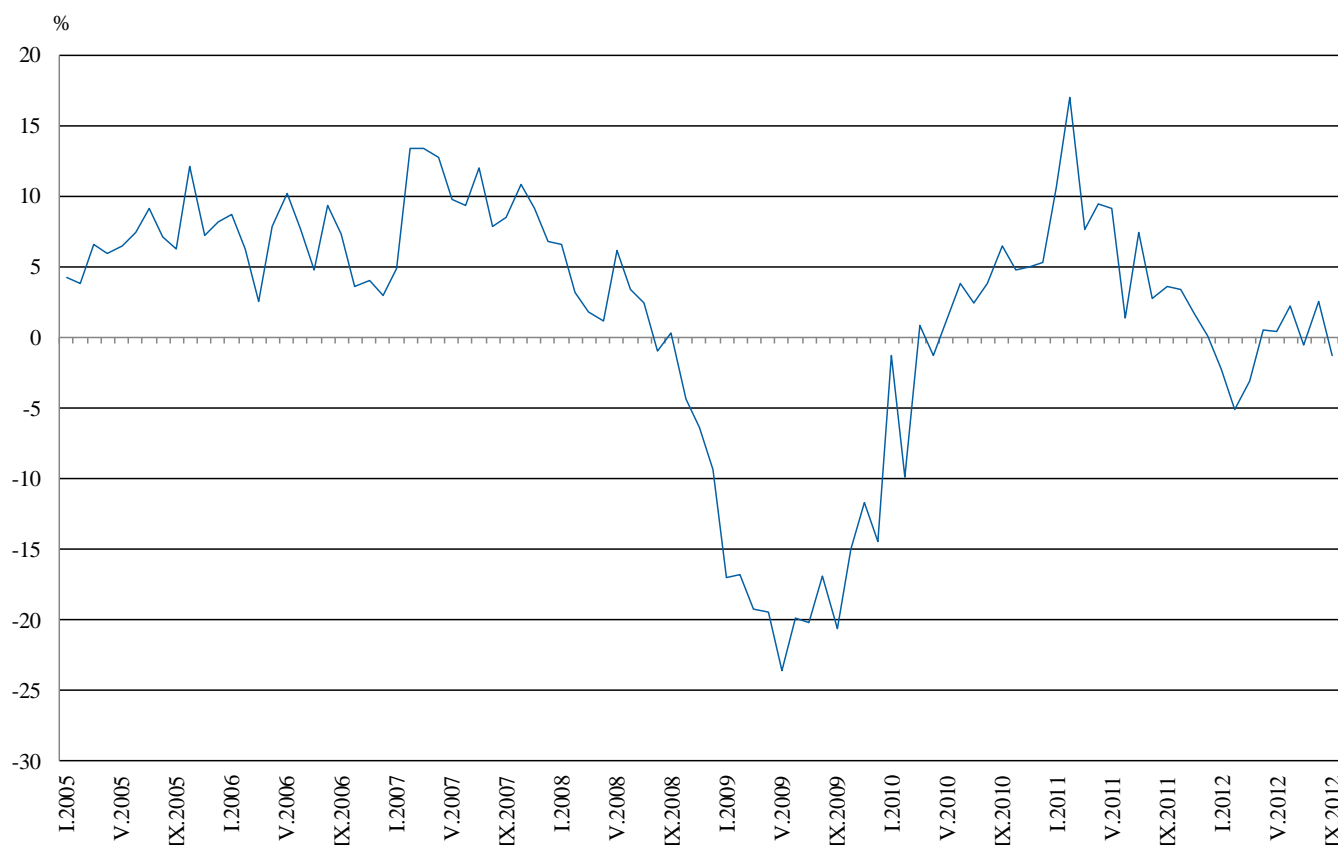


## Annual comparisons

On annual bases in September 2012 Industrial Production Index, calculated from working day adjusted data in the manufacturing decreased by 3.6%, while increases were registered in the electricity, gas, steam and air conditioning supply by 5.7% and in the mining and quarrying industry by 2.1%.

In the manufacturing, the more significant decreases compared to the same month of the previous year were seen in the repair and installation of machinery and equipment by 41.3%, in the manufacture of fabricated metal products, except machinery and equipment by 20.9%, in the in the manufacture of textiles by 14.6%, in the manufacture of wearing apparel by 12.4%. Increases were registered in the manufacture of tobacco products by 29.8%, in the manufacture of electrical equipment by 23.5%, in the manufacture of basic pharmaceutical products and pharmaceutical preparations by 22.3%.

**Figure 3. Percentage changes of Industrial Production Indices compared to the same month of the previous year**  
(Working day adjusted)



The final data on Industrial Production and Turnover Indices for August 2012 can be found in NSI internet web-site: (<http://www.nsi.bg/otrasalen.php?otr=46>).

**Percentage changes of Industrial Production Indices compared to the previous month<sup>1</sup>**

Economic Activities	NACE.BG - 2008 Code	2012					
		IV	V	VI	VII	VIII	IX
<b>Industry</b>	<b>B_TO_E36</b>	<b>2.1</b>	<b>0.4</b>	<b>-0.4</b>	<b>0.0</b>	<b>0.8</b>	<b>-1.8</b>
<b>Mining and quarrying</b>	<b>B</b>	<b>-6.7</b>	<b>2.8</b>	<b>1.7</b>	<b>7.5</b>	<b>-0.6</b>	<b>0.6</b>
of which:							
Mining of coal and lignite	B05	-4.2	-0.6	-17.1	21.7	0.4	4.1
Mining of metal ores	B07	1.2	-20.2	35.8	-9.2	3.0	-0.4
Other mining and quarrying	B08	5.2	-1.4	20.6	20.7	-13.0	3.3
<b>Manufacturing</b>	<b>C</b>	<b>2.0</b>	<b>0.8</b>	<b>-0.9</b>	<b>-1.3</b>	<b>0.4</b>	<b>-2.5</b>
of which:							
Manufacture of food products	C10	-3.1	0.5	-2.1	3.9	-1.8	-4.1
Manufacture of beverages	C11	-2.0	5.2	-2.1	-1.6	-2.9	3.3
Manufacture of tobacco products	C12	-6.8	12.9	6.6	-5.5	-12.8	11.2
Manufacture of textiles	C13	0.5	-6.1	-4.7	-3.4	6.6	1.8
Manufacture of wearing apparel	C14	-0.3	-2.0	5.7	-7.2	2.4	-5.7
Manufacture of leather and related products	C15	-5.3	17.2	6.5	-9.8	8.9	-13.0
Manufacture of wood and of products of wood and cork, except furniture; manufacture of articles of straw and plaiting materials	C16	5.4	12.5	-5.3	0.0	-5.7	-5.6
Manufacture of paper and paper products	C17	4.5	-0.7	-4.5	6.7	-6.8	0.4
Printing and reproduction of recorded media	C18	-4.7	1.1	-2.8	-3.6	-4.3	1.7
Manufacture of chemicals and chemical products	C20	-18.6	22.6	-5.1	-9.7	4.3	3.5
Manufacture of basic pharmaceutical products and pharmaceutical preparations	C21	6.4	2.1	1.5	11.8	-11.9	6.3
Manufacture of rubber and plastic products	C22	4.6	5.5	-1.0	-4.0	6.5	-1.8
Manufacture of other non-metallic mineral products	C23	3.8	-3.2	-2.1	3.4	-0.6	-4.3
Manufacture of basic metals	C24	54.0	-15.4	1.9	1.7	-12.9	10.0
Manufacture of fabricated metal products, except machinery and equipment	C25	-5.8	17.0	-14.7	-3.5	4.7	-6.0
Manufacture of computer, electronic and optical products	C26	7.0	3.6	3.5	-22.8	5.0	2.0
Manufacture of electrical equipment	C27	9.7	1.6	0.4	-4.1	-1.8	0.8
Manufacture of machinery and equipment n.e.c.	C28	-1.8	3.9	-2.9	-3.1	5.2	-8.8
Manufacture of motor vehicles, trailers and semi-trailers	C29	3.0	0.3	1.6	2.3	1.0	8.7
Manufacture of other transport equipment	C30	-3.2	-21.1	55.8	-37.4	-18.6	-1.5
Manufacture of furniture	C31	1.0	12.3	-2.4	-0.6	2.1	0.8
Other manufacturing	C32	5.1	6.7	-8.6	-0.7	13.4	-5.7
Repair and installation of machinery and equipment	C32	-0.1	11.7	-8.8	-10.8	21.7	-27.2
<b>Electricity, gas, steam and air conditioning supply</b>	<b>D</b>	<b>6.0</b>	<b>1.5</b>	<b>-2.0</b>	<b>8.3</b>	<b>1.1</b>	<b>-4.7</b>
Electricity, gas, steam and air conditioning supply	D35	6.0	1.5	-2.0	8.3	1.1	-4.7

<sup>1</sup> Seasonally adjusted .



Table 2

**Percentage changes of Industrial Production Indices compared to the same month of the previous year <sup>1</sup>**

Economic Activities	NACE.BG -2008 Code	2012					
		IV	V	VI	VII	VIII	IX
<b>Industry</b>	<b>B_TO_E36</b>	<b>0.5</b>	<b>0.4</b>	<b>2.2</b>	<b>-0.5</b>	<b>2.6</b>	<b>-1.3</b>
<b>Mining and quarrying</b>	<b>B</b>	<b>-5.0</b>	<b>-13.1</b>	<b>4.5</b>	<b>1.5</b>	<b>4.5</b>	<b>2.1</b>
of which:							
Mining of coal and lignite	B05	-23.9	-19.6	-31.2	-1.1	-6.1	-3.1
Mining of metal ores	B07	11.7	-8.1	44.8	-8.2	13.1	-4.1
Other mining and quarrying	B08	5.9	-4.7	27.0	46.7	27.0	49.2
<b>Manufacturing</b>	<b>C</b>	<b>4.5</b>	<b>4.6</b>	<b>4.5</b>	<b>-0.7</b>	<b>2.4</b>	<b>-3.6</b>
of which:							
Manufacture of food products	C10	-1.7	2.7	2.4	2.4	2.9	-3.6
Manufacture of beverages	C11	4.8	3.8	9.0	0.8	-0.8	0.9
Manufacture of tobacco products	C12	13.2	36.6	35.9	32.8	2.4	29.8
Manufacture of textiles	C13	-15.4	-23.8	-27.6	-25.6	-29.1	-14.6
Manufacture of wearing apparel	C14	-1.1	-10.7	4.1	-12.0	-6.4	-12.4
Manufacture of leather and related products	C15	-21.8	-9.0	5.8	-12.0	-4.2	-16.7
Manufacture of wood and of products of wood and cork, except furniture; manufacture of articles of straw and plaiting materials	C16	-4.3	18.0	3.3	0.0	-5.0	-8.4
Manufacture of paper and paper products	C17	-5.2	-14.0	-14.2	-5.5	-5.5	-3.8
Printing and reproduction of recorded media	C18	1.7	-3.0	-3.5	-11.0	-9.3	-6.8
Manufacture of chemicals and chemical products	C20	-19.4	-6.6	-6.0	-14.4	-13.6	-9.1
Manufacture of basic pharmaceutical products and pharmaceutical preparations	C21	15.4	16.7	15.4	36.7	7.6	22.3
Manufacture of rubber and plastic products	C22	1.4	0.0	4.1	-2.8	5.9	1.0
Manufacture of other non-metallic mineral products	C23	1.8	-1.4	-6.5	-0.5	0.2	-11.5
Manufacture of basic metals	C24	14.5	-16.6	-11.1	-8.6	-22.7	-1.6
Manufacture of fabricated metal products, except machinery and equipment	C25	-7.4	1.3	-13.0	-19.2	-5.2	-20.9
Manufacture of computer, electronic and optical products	C26	21.8	13.2	17.6	-19.6	-0.7	6.7
Manufacture of electrical equipment	C27	38.6	28.9	29.6	14.6	13.2	23.5
Manufacture of machinery and equipment n.e.c.	C28	22.5	14.4	13.9	5.0	21.1	-0.3
Manufacture of motor vehicles, trailers and semi-trailers	C29	14.5	-2.2	7.9	0.7	-1.5	32.5
Manufacture of other transport equipment	C30	5.5	-41.4	73.6	2.1	14.3	-34.6
Manufacture of furniture	C31	-4.1	6.9	7.5	-1.3	-3.0	2.2
Other manufacturing	C32	33.9	11.0	2.2	-2.3	17.1	25.1
Repair and installation of machinery and equipment	C33	-8.2	18.8	12.9	8.7	17.7	-41.3
<b>Electricity, gas, steam and air conditioning supply</b>	<b>D</b>	<b>-11.8</b>	<b>-7.1</b>	<b>-5.3</b>	<b>-1.8</b>	<b>4.3</b>	<b>5.7</b>
Electricity, gas, steam and air conditioning supply	D35	-11.8	-7.1	-5.3	-1.8	4.3	5.7

<sup>1</sup> Working day adjusted.



Table 3

**Industrial Production Indices**  
(Seasonally adjusted, 2005=100)

NACE.BG - 2008 Code	2011				2012								
	IX	X	XI	XII	I	II	III	IV	V	VI	VII	VIII	IX
<b>B_TO_E36</b>	<b>103.1</b>	<b>103.2</b>	<b>102.7</b>	<b>101.7</b>	<b>101.3</b>	<b>99.6</b>	<b>101.2</b>	<b>103.3</b>	<b>103.7</b>	<b>103.3</b>	<b>103.3</b>	<b>104.1</b>	<b>102.2</b>
<b>B</b>	<b>84.1</b>	<b>84.2</b>	<b>75.8</b>	<b>90.0</b>	<b>82.2</b>	<b>77.8</b>	<b>81.7</b>	<b>76.2</b>	<b>78.3</b>	<b>79.6</b>	<b>85.6</b>	<b>85.1</b>	<b>85.6</b>
<b>B05</b>	121.2	116.6	123.0	121.2	104.8	108.4	116.3	111.4	110.7	91.8	111.7	112.1	116.7
<b>B07</b>	79.4	76.4	46.1	87.4	73.0	65.6	72.5	73.4	58.6	79.6	72.3	74.5	74.2
<b>B08</b>	58.1	65.7	59.3	62.0	60.2	52.7	63.0	66.3	65.4	78.9	95.2	82.8	85.5
<b>C</b>	<b>102.7</b>	<b>101.8</b>	<b>101.0</b>	<b>98.3</b>	<b>100.2</b>	<b>97.4</b>	<b>101.9</b>	<b>103.9</b>	<b>104.7</b>	<b>103.8</b>	<b>102.5</b>	<b>102.9</b>	<b>100.3</b>
<b>C10</b>	110.1	111.2	108.2	106.7	106.9	114.4	114.7	111.1	111.6	109.3	113.6	111.5	106.9
<b>C11</b>	88.5	85.7	79.0	76.8	78.7	80.6	89.0	87.2	91.7	89.8	88.4	85.8	88.6
<b>C12</b>	94.6	93.3	113.4	105.8	114.6	120.2	125.9	117.4	132.5	141.3	133.5	116.4	129.4
<b>C13</b>	66.3	60.8	63.9	62.7	60.6	58.3	59.1	59.4	55.8	53.2	51.4	54.8	55.8
<b>C14</b>	69.5	67.3	63.8	64.0	66.1	63.0	66.1	65.9	64.6	68.3	63.4	64.9	61.2
<b>C15</b>	80.5	75.1	71.5	69.9	69.9	64.1	65.6	62.1	72.8	77.5	69.9	76.1	66.2
<b>C16</b>	85.6	84.8	82.1	87.9	82.0	73.4	78.0	82.2	92.5	87.6	87.6	82.6	78.0
<b>C17</b>	134.5	115.5	103.8	71.9	87.9	105.7	132.6	138.6	137.6	131.4	140.2	130.7	131.2
<b>C18</b>	100.1	112.2	109.1	100.3	103.6	104.6	107.1	102.1	103.2	100.3	96.7	92.5	94.1
<b>C20</b>	109.2	103.7	98.5	105.6	108.1	103.7	107.8	87.7	107.5	102.0	92.1	96.1	99.5
<b>C21</b>	96.6	102.3	105.0	107.2	97.0	103.4	100.7	107.1	109.3	110.9	124.0	109.2	116.1
<b>C22</b>	118.3	111.0	102.9	103.4	113.0	100.5	107.7	112.7	118.9	117.7	113.0	120.4	118.2
<b>C23</b>	92.1	92.4	84.0	83.9	88.0	60.5	84.7	87.9	85.1	83.3	86.1	85.6	81.9
<b>C24</b>	96.2	108.6	113.6	97.2	111.6	101.1	73.7	113.5	96.0	97.8	99.5	86.7	95.4
<b>C25</b>	113.0	130.5	114.2	89.1	99.3	95.9	100.7	94.9	111.0	94.7	91.4	95.7	90.0
<b>C26</b>	115.4	120.4	133.9	110.6	149.7	134.0	131.5	140.7	145.8	150.9	116.5	122.3	124.8
<b>C27</b>	142.7	145.3	158.1	153.9	150.7	154.8	168.9	185.2	188.1	188.9	181.2	178.0	179.5
<b>C28</b>	125.4	122.6	124.7	116.1	131.9	133.5	139.9	137.4	142.8	138.7	134.4	141.4	129.0
<b>C29</b>	128.8	149.1	143.5	127.5	127.4	144.3	142.0	146.3	146.7	149.0	152.5	154.0	167.4
<b>C30</b>	78.7	62.8	86.6	54.1	98.7	88.9	98.9	95.7	75.5	117.6	73.6	59.9	59.0
<b>C31</b>	112.7	114.9	109.9	109.2	105.3	94.1	101.1	102.1	114.7	111.9	111.2	113.5	114.4
<b>C32</b>	141.8	140.9	133.8	131.6	187.8	135.8	163.0	171.3	182.8	167.0	165.8	188.0	177.3
<b>C33</b>	131.5	99.0	112.4	102.9	102.4	111.9	98.5	98.4	109.9	100.2	89.4	108.8	79.2
<b>D</b>	<b>110.1</b>	<b>117.8</b>	<b>120.9</b>	<b>116.2</b>	<b>114.7</b>	<b>116.6</b>	<b>105.4</b>	<b>111.7</b>	<b>113.4</b>	<b>111.1</b>	<b>120.3</b>	<b>121.6</b>	<b>115.9</b>
<b>D35</b>	110.1	117.8	120.9	116.2	114.7	116.6	105.4	111.7	113.4	111.1	120.3	121.6	115.9



Table 4

**Industrial Production Indices**  
(Working day adjusted, 2005=100)

NACE.BG - 2008 Code	2009	2010	2011				2012								
	IX	IX	IX	X	XI	XII	I	II	III	IV	V	VI	VII	VIII	IX
<b>B_TO_E36</b>	<b>94.1</b>	<b>100.2</b>	<b>103.8</b>	<b>108.5</b>	<b>108.3</b>	<b>103.9</b>	<b>93.2</b>	<b>91.5</b>	<b>103.1</b>	<b>100.6</b>	<b>101.4</b>	<b>106.4</b>	<b>108.3</b>	<b>103.7</b>	<b>102.4</b>
<b>B</b>	<b>69.6</b>	<b>77.8</b>	<b>86.4</b>	<b>94.1</b>	<b>82.0</b>	<b>96.0</b>	<b>76.9</b>	<b>72.7</b>	<b>80.4</b>	<b>74.0</b>	<b>74.0</b>	<b>76.3</b>	<b>85.2</b>	<b>83.1</b>	<b>88.2</b>
<b>B05</b>	87.0	102.9	125.2	140.9	146.8	131.2	108.8	106.4	113.5	92.1	101.8	72.2	108.5	105.4	121.3
<b>B07</b>	63.3	73.1	77.4	79.6	46.6	90.6	73.0	65.6	72.5	73.4	61.6	84.4	72.3	74.5	74.2
<b>B08</b>	75.0	75.6	62.0	74.4	65.1	67.0	42.2	39.6	58.9	66.0	69.4	86.6	103.0	87.5	92.5
<b>C</b>	<b>92.5</b>	<b>103.3</b>	<b>107.2</b>	<b>108.6</b>	<b>106.2</b>	<b>95.7</b>	<b>85.1</b>	<b>83.4</b>	<b>103.2</b>	<b>102.8</b>	<b>107.0</b>	<b>113.5</b>	<b>109.6</b>	<b>103.5</b>	<b>103.3</b>
<b>C10</b>	114.2	132.0	120.1	122.8	115.7	112.3	89.3	98.7	113.3	106.8	108.4	112.1	115.2	115.7	115.8
<b>C11</b>	91.8	95.0	95.5	77.8	75.1	87.2	49.0	52.6	83.8	85.5	98.5	108.9	111.0	107.4	96.4
<b>C12</b>	156.7	108.8	104.1	107.5	136.9	103.7	91.8	89.9	118.1	102.7	139.6	167.1	154.3	118.4	135.1
<b>C13</b>	61.1	66.1	63.7	61.2	67.4	53.3	48.4	55.7	65.1	66.3	61.9	62.3	55.5	45.1	54.4
<b>C14</b>	65.7	69.2	68.5	68.5	63.9	64.5	65.6	60.3	65.3	60.6	57.5	74.4	73.5	65.9	60.0
<b>C15</b>	77.1	84.8	84.3	77.7	70.0	65.2	68.6	63.6	67.3	51.6	63.0	84.2	83.8	75.3	70.2
<b>C16</b>	73.1	95.5	93.2	93.6	87.8	83.4	62.9	56.8	74.5	78.6	91.2	94.2	96.2	85.4	85.4
<b>C17</b>	78.2	144.5	139.9	112.9	101.9	69.5	80.7	96.2	138.1	143.0	139.0	142.5	148.5	131.4	134.6
<b>C18</b>	112.0	123.4	106.2	124.6	118.1	113.3	85.2	91.3	101.1	96.8	96.6	104.5	96.4	94.2	99.0
<b>C20</b>	73.1	103.2	110.2	100.9	101.8	104.3	100.3	97.1	119.0	90.0	105.8	105.9	92.5	90.4	100.2
<b>C21</b>	73.7	91.4	95.5	114.7	115.7	110.0	75.6	103.6	105.1	105.8	106.0	126.4	115.0	105.0	116.8
<b>C22</b>	110.6	127.8	124.6	124.4	109.3	97.9	90.6	83.9	108.7	109.4	115.7	127.9	124.0	124.8	125.9
<b>C23</b>	88.2	91.4	102.1	103.8	88.5	72.4	60.5	48.3	82.4	91.0	91.5	93.4	95.1	90.3	90.4
<b>C24</b>	92.8	95.0	88.1	118.1	117.3	76.1	105.8	97.0	83.6	119.4	99.5	96.5	109.8	78.5	86.7
<b>C25</b>	81.5	107.3	116.4	129.4	120.2	105.6	70.9	84.9	103.5	94.9	108.9	101.4	94.4	95.3	92.1
<b>C26</b>	99.8	112.4	123.2	122.3	139.4	138.1	128.0	114.7	135.4	137.2	139.5	158.0	114.6	110.0	131.4
<b>C27</b>	141.3	163.7	150.9	163.8	181.5	147.4	136.1	142.8	170.1	185.0	180.5	205.8	195.7	158.2	186.4
<b>C28</b>	97.7	115.1	129.9	131.3	132.5	112.1	111.3	126.4	149.1	134.3	141.0	154.5	142.9	131.5	129.5
<b>C29</b>	118.3	152.1	127.3	157.3	158.5	120.1	114.7	133.6	150.0	151.8	152.3	161.1	150.9	135.2	168.7
<b>C30</b>	117.2	71.9	86.3	52.2	81.5	59.4	57.7	70.3	108.4	88.1	100.4	141.5	76.3	56.6	56.4
<b>C31</b>	86.3	109.7	115.2	126.2	119.7	114.1	86.8	81.2	102.0	97.8	112.2	118.7	115.5	114.9	117.7
<b>C32</b>	179.7	145.3	152.6	163.0	142.8	121.7	151.8	117.1	160.3	165.9	182.8	190.0	165.2	192.5	190.9
<b>C33</b>	88.5	100.6	141.3	102.7	121.7	140.7	70.2	93.9	98.1	89.4	103.8	105.9	88.8	109.8	82.9
<b>D</b>	<b>105.6</b>	<b>98.3</b>	<b>97.2</b>	<b>113.4</b>	<b>129.3</b>	<b>140.9</b>	<b>131.7</b>	<b>129.7</b>	<b>114.7</b>	<b>103.8</b>	<b>95.0</b>	<b>95.2</b>	<b>113.2</b>	<b>112.8</b>	<b>102.7</b>
<b>D35</b>	105.6	98.3	97.2	113.4	129.3	140.9	131.7	129.7	114.7	103.8	95.0	95.2	113.2	112.8	102.7