

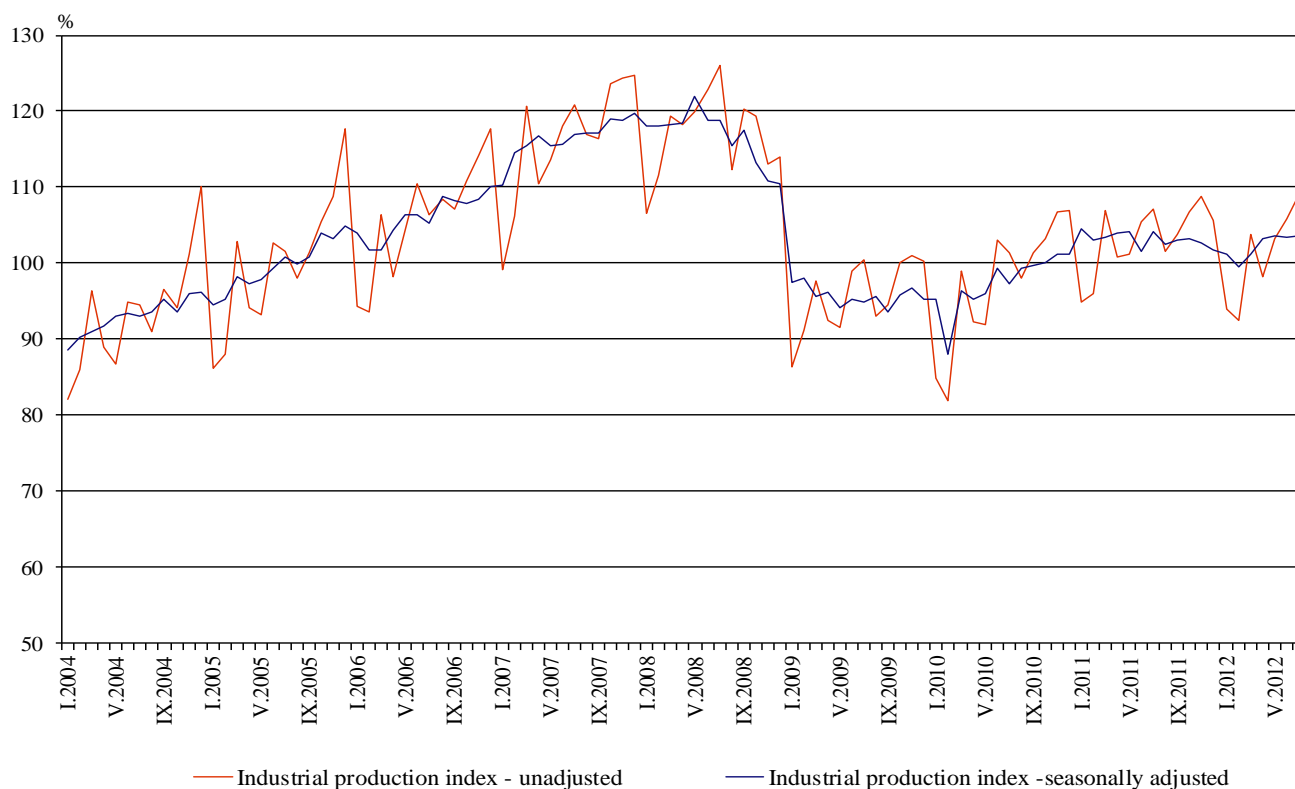


INDUSTRIAL PRODUCTION INDICES IN JULY 2012¹

The preliminary data showed that the Industrial Production Index², seasonally adjusted³, increased by 0.4% in July 2012 as compared to June 2012.

In July 2012 working day adjusted⁴ Industrial Production Index rose by 0.4% in comparison with the same month of 2011.

Figure 1. Industrial Production Indices (2005=100)



¹ Data for July 2012 are preliminary.

² Monthly Industrial Production and Industrial turnover indices measure changes in production and turnover values of industrial enterprises. This information can be used to assess the current economic development and for short-term forecasts. Indices do not measure the actual production level, it aims to measure the average change in value of production between two points of time. Indices are compiled on the basis of information collected through representative sampling survey on industrial enterprises. The sample covers enterprises with annual turnover more than 97% of total turnover in industry.

Industrial production indices are calculated at constant base year (2005) that is to say they are weighted with the structure of the value added at factor costs in the base year.

³ Seasonal adjustment is a statistical method, which eliminates the seasonal component of time series and it is particularly suitable for long-term comparisons and analysis of the data.

⁴ Working day adjustment is an adjustment for variations caused by calendar effects, different number of calendar and working days in the months, national holidays and outliers (for example the presence of more non-working days in May could contribute to the decline in the production in some activities).

The seasonally and working day adjusted data on Industrial production index by months, starting from January 2000 can be found on NSI internet web-site: (<http://www.nsi.bg/otrasalen.php?otr=46>).

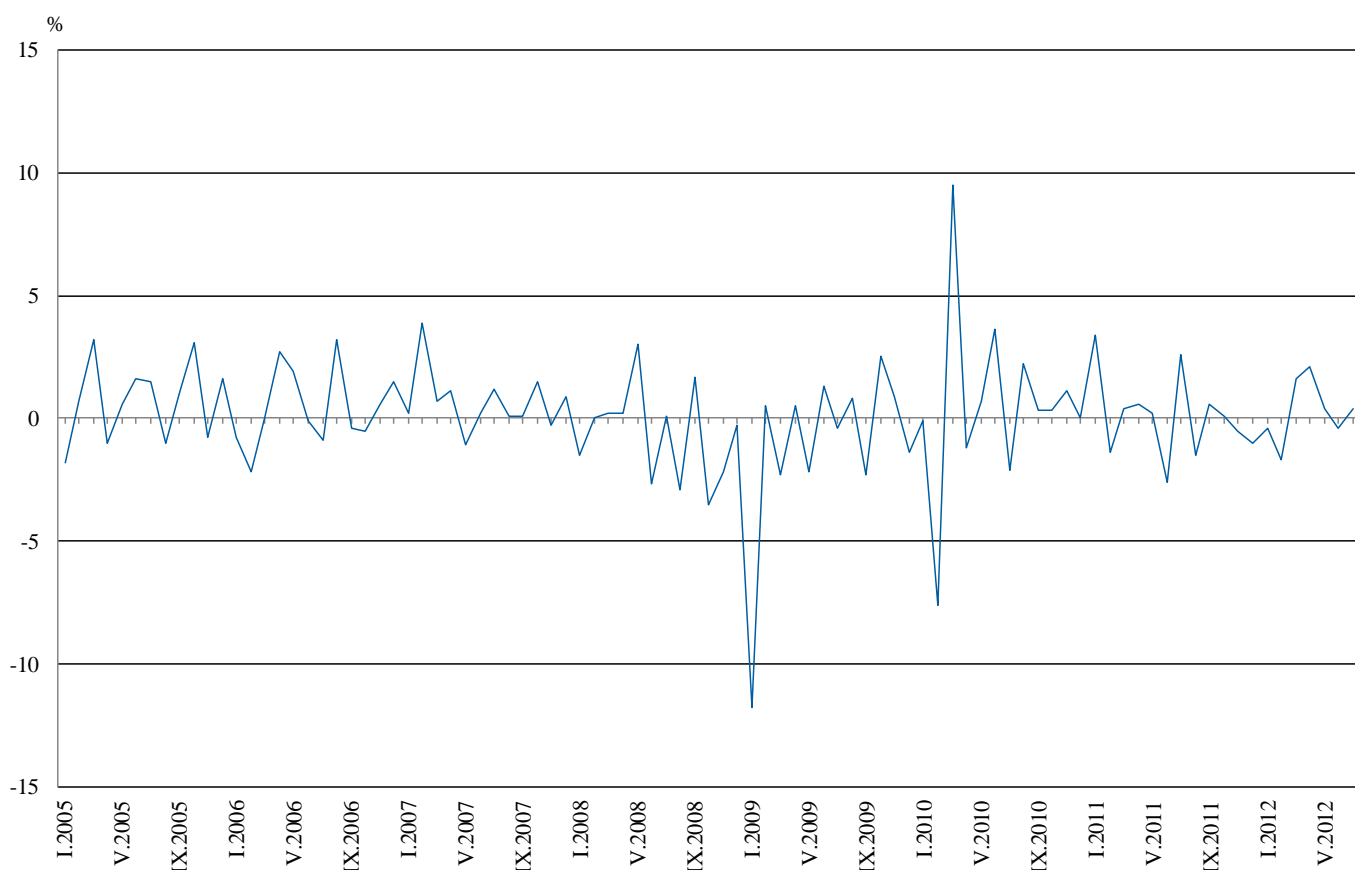


Monthly comparisons

In July 2012 as compared to June 2012, the seasonally adjusted Industrial Production Index in the electricity, gas, steam and air conditioning supply increased by 13.1% and in the mining and quarrying industry by 7.3%, while in the manufacturing a decrease by 1.4% was seen.

The most significant decreases of production in the manufacturing were seen in the manufacture of chemicals and chemical products by 11.3%, in the repair and installation of machinery and equipment by 10.2%, in the manufacture of wearing apparel by 8.1%, in the manufacture of tobacco products by 5.5%, in the manufacture of textiles by 4.7%. There was increase in the manufacture of basic pharmaceutical products and pharmaceutical preparations by 10.9%, in the manufacture of paper and paper products by 7.1%, in the manufacture of basic metals by 3.3%.

Figure 2. Percentage changes of Industrial Production Indices compared to the previous month (Seasonally adjusted)



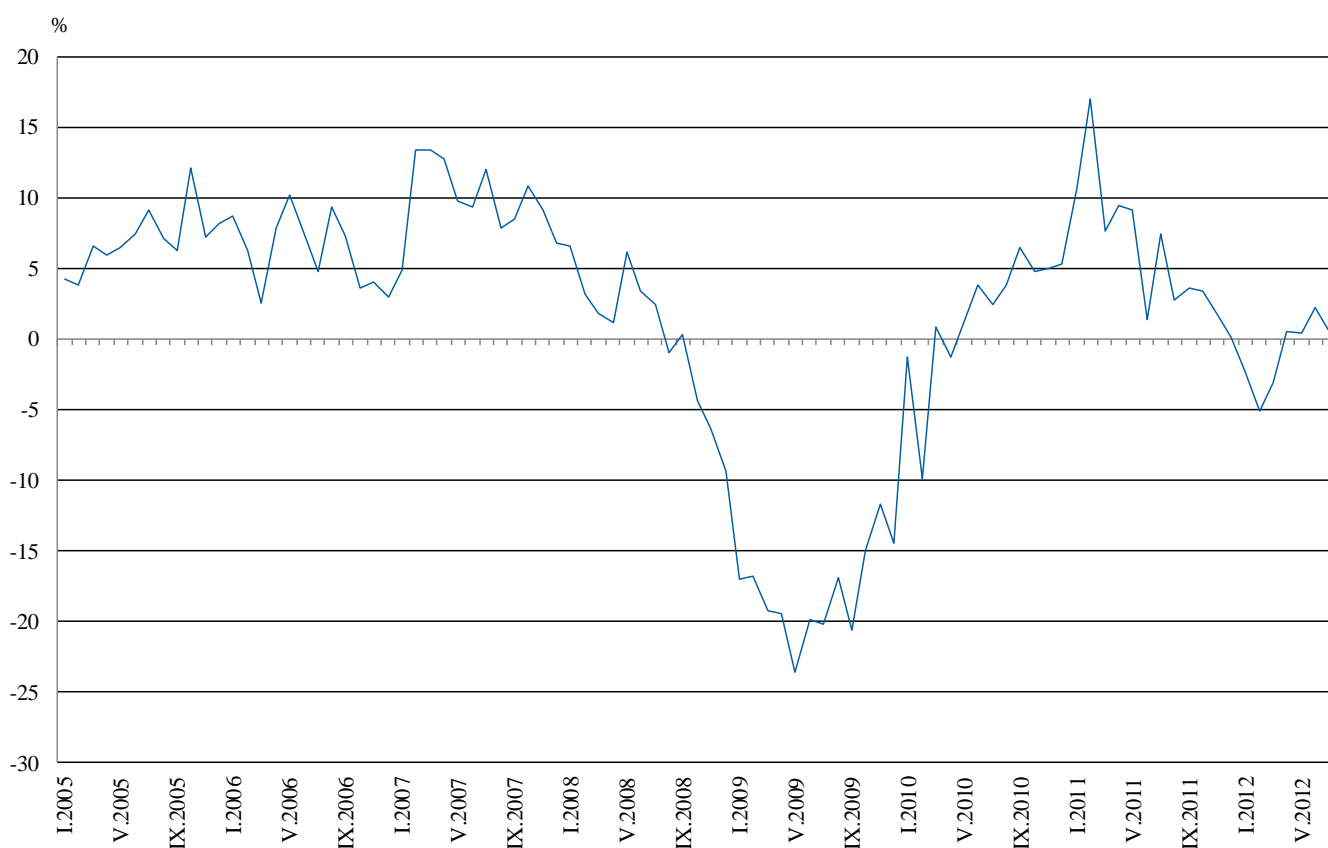


www.nsi.bg
Annual comparisons

On annual bases in July 2012 Industrial Production Index, calculated from working day adjusted data in the electricity, gas, steam and air conditioning supply increased by 3.1% and in the mining and quarrying industry by 1.5%, while in the manufacturing a decrease by 1.0% was seen.

In the manufacturing, the more significant decreases compared to the same month of the previous year were seen in the manufacture of textiles by 26.0%, in the manufacture of fabricated metal products, except machinery and equipment by 18.2%, in the manufacture of chemicals and chemical products by 16.0%, in the manufacture of wearing apparel by 12.7%. Increases were registered in the manufacture of basic pharmaceutical products and pharmaceutical preparations by 36.1%, in the manufacture of tobacco products by 33.0%, in the repair and installation of machinery and equipment by 12.1%.

**Figure 3. Percentage changes of Industrial Production Indices compared to the same month of the previous year
(Working day adjusted)**



The final data on Industrial Production and Turnover Indices for June 2012 can be found on NSI internet web-site: (<http://www.nsi.bg/otrasalen.php?otr=46>).

Percentage changes of Industrial Production Indices compared to the previous month¹

Economic Activities	NACE.BG - 2008 Code	2012					
		II	III	IV	V	VI	VII
Industry	B_TO_E36	-1.7	1.6	2.1	0.4	-0.4	0.4
Mining and quarrying	B	-5.4	5.0	-6.7	2.8	1.7	7.3
of which:							
Mining of coal and lignite	B05	3.4	7.3	-4.2	-0.6	-17.1	21.2
Mining of metal ores	B07	-10.1	10.5	1.2	-20.2	35.8	-8.7
Other mining and quarrying	B08	-12.5	19.5	5.2	-1.4	20.6	17.6
Manufacturing	C	-2.8	4.6	2.0	0.8	-0.9	-1.4
of which:							
Manufacture of food products	C10	7.0	0.3	-3.1	0.5	-2.1	3.6
Manufacture of beverages	C11	2.4	10.4	-2.0	5.2	-2.1	-1.8
Manufacture of tobacco products	C12	4.9	4.7	-6.8	12.9	6.6	-5.5
Manufacture of textiles	C13	-3.8	1.4	0.5	-6.1	-4.7	-4.7
Manufacture of wearing apparel	C14	-4.7	4.9	-0.3	-2.0	5.7	-8.1
Manufacture of leather and related products	C15	-8.3	2.3	-5.3	17.2	6.5	-10.1
Manufacture of wood and of products of wood and cork, except furniture; manufacture of articles of straw and plaiting materials	C16	-10.5	6.3	5.4	12.5	-5.3	1.1
Manufacture of paper and paper products	C17	20.3	25.4	4.5	-0.7	-4.5	7.1
Printing and reproduction of recorded media	C18	1.0	2.4	-4.7	1.1	-2.8	-3.2
Manufacture of chemicals and chemical products	C20	-4.1	4.0	-18.6	22.6	-5.1	-11.3
Manufacture of basic pharmaceutical products and pharmaceutical preparations	C21	6.6	-2.6	6.4	2.1	1.5	10.9
Manufacture of rubber and plastic products	C22	-11.1	7.2	4.6	5.5	-1.0	-4.0
Manufacture of other non-metallic mineral products	C23	-31.3	40.0	3.8	-3.2	-2.1	2.9
Manufacture of basic metals	C24	-9.4	-27.1	54.0	-15.4	1.9	3.3
Manufacture of fabricated metal products, except machinery and equipment	C25	-3.4	5.0	-5.8	17.0	-14.7	-2.3
Manufacture of computer, electronic and optical products	C26	-10.5	-1.9	7.0	3.6	3.5	-22.3
Manufacture of electrical equipment	C27	2.7	9.1	9.7	1.6	0.4	-4.2
Manufacture of machinery and equipment n.e.c.	C28	1.2	4.8	-1.8	3.9	-2.9	-3.2
Manufacture of motor vehicles, trailers and semi-trailers	C29	13.3	-1.6	3.0	0.3	1.6	-1.5
Manufacture of other transport equipment	C30	-9.9	11.2	-3.2	-21.1	55.8	-36.5
Manufacture of furniture	C31	-10.6	7.4	1.0	12.3	-2.4	-1.3
Other manufacturing	C32	-27.7	20.0	5.1	6.7	-8.6	-0.2
Repair and installation of machinery and equipment	C32	9.3	-12.0	-0.1	11.7	-8.8	-10.2
Electricity, gas, steam and air conditioning supply	D	1.7	-9.6	6.0	1.5	-2.0	13.1
Electricity, gas, steam and air conditioning supply	D35	1.7	-9.6	6.0	1.5	-2.0	13.1

¹ Seasonally adjusted.



Table 2

**Percentage changes of Industrial Production Indices compared to the same month
of the previous year ¹**

Economic Activities	NACE.BG -2008 Code	2012					
		II	III	IV	V	VI	VII
Industry	B_TO_E36	-5.1	-3.1	0.5	0.4	2.2	0.4
Mining and quarrying	B	3.3	3.2	-5.0	-13.1	4.5	1.5
of which:							
Mining of coal and lignite	B05	-5.5	3.6	-23.9	-19.6	-31.2	-1.2
Mining of metal ores	B07	21.3	7.4	11.7	-8.1	44.8	-8.2
Other mining and quarrying	B08	-25.6	11.8	5.9	-4.7	27.0	47.3
Manufacturing	C	-6.9	0.1	4.5	4.6	4.5	-1.0
of which:							
Manufacture of food products	C10	-3.6	3.8	-1.7	2.7	2.4	2.0
Manufacture of beverages	C11	-15.6	7.4	4.8	3.8	9.0	-0.1
Manufacture of tobacco products	C12	21.7	40.4	13.2	36.6	35.9	33.0
Manufacture of textiles	C13	-19.6	-13.7	-15.4	-23.8	-27.6	-26.0
Manufacture of wearing apparel	C14	-15.8	-4.5	-1.1	-10.7	4.1	-12.7
Manufacture of leather and related products	C15	-13.9	-20.6	-21.8	-9.0	5.8	-11.7
Manufacture of wood and of products of wood and cork, except furniture; manufacture of articles of straw and plaiting materials	C16	-25.8	-9.1	-4.3	18.0	3.3	-0.5
Manufacture of paper and paper products	C17	-27.0	-4.3	-5.2	-14.0	-14.2	-5.5
Printing and reproduction of recorded media	C18	-6.6	-2.6	1.7	-3.0	-3.5	-10.5
Manufacture of chemicals and chemical products	C20	-15.0	12.5	-19.4	-6.6	-6.0	-16.0
Manufacture of basic pharmaceutical products and pharmaceutical preparations	C21	14.7	6.7	15.4	16.7	15.4	36.1
Manufacture of rubber and plastic products	C22	-18.9	-7.6	1.4	0.0	4.1	-2.6
Manufacture of other non-metallic mineral products	C23	-30.7	-1.4	1.8	-1.4	-6.5	-0.9
Manufacture of basic metals	C24	0.4	-24.3	14.5	-16.6	-11.1	-8.7
Manufacture of fabricated metal products, except machinery and equipment	C25	6.9	-6.3	-7.4	1.3	-13.0	-18.2
Manufacture of computer, electronic and optical products	C26	2.4	8.4	21.8	13.2	17.6	-19.8
Manufacture of electrical equipment	C27	-2.4	6.7	38.6	28.9	29.6	13.2
Manufacture of machinery and equipment n.e.c.	C28	12.7	20.8	22.5	14.4	13.9	5.1
Manufacture of motor vehicles, trailers and semi-trailers	C29	2.0	-3.1	14.5	-2.2	7.9	-2.3
Manufacture of other transport equipment	C30	6.4	21.3	5.5	-41.4	73.6	2.1
Manufacture of furniture	C31	-15.0	-4.3	-4.1	6.9	7.5	-2.0
Other manufacturing	C32	-12.7	7.3	33.9	11.0	2.2	-1.7
Repair and installation of machinery and equipment	C33	0.6	-3.3	-8.2	18.8	12.9	12.1
Electricity, gas, steam and air conditioning supply	D	-4.0	-14.1	-11.8	-7.1	-5.3	3.1
Electricity, gas, steam and air conditioning supply	D35	-4.0	-14.1	-11.8	-7.1	-5.3	3.1

¹ Working day adjusted.

Table 3

Industrial Production Indices
(Seasonally adjusted, 2005=100)

NACE.BG - 2008 Code	2011						2012						
	VII	VIII	IX	X	XI	XII	I	II	III	IV	V	VI	VII
B_TO_E36	104.1	102.5	103.1	103.2	102.7	101.7	101.3	99.6	101.2	103.3	103.7	103.3	103.7
B	84.6	81.6	84.1	84.2	75.8	90.0	82.2	77.8	81.7	76.2	78.3	79.6	85.4
B05	114.5	120.6	121.2	116.6	123.0	121.2	104.8	108.4	116.3	111.4	110.7	91.8	111.3
B07	80.0	66.3	79.4	76.4	46.1	87.4	73.0	65.6	72.5	73.4	58.6	79.6	72.7
B08	66.9	65.3	58.1	65.7	59.3	62.0	60.2	52.7	63.0	66.3	65.4	78.9	92.8
C	102.7	100.5	102.7	101.8	101.0	98.3	100.2	97.4	101.9	103.9	104.7	103.8	102.3
C10	110.8	108.1	110.1	111.2	108.2	106.7	106.9	114.4	114.7	111.1	111.6	109.3	113.2
C11	88.9	84.7	88.5	85.7	79.0	76.8	78.7	80.6	89.0	87.2	91.7	89.8	88.2
C12	101.1	99.2	94.6	93.3	113.4	105.8	114.6	120.2	125.9	117.4	132.5	141.3	133.5
C13	66.8	77.7	66.3	60.8	63.9	62.7	60.6	58.3	59.1	59.4	55.8	53.2	50.7
C14	71.9	70.2	69.5	67.3	63.8	64.0	66.1	63.0	66.1	65.9	64.6	68.3	62.8
C15	81.2	81.0	80.5	75.1	71.5	69.9	69.9	64.1	65.6	62.1	72.8	77.5	69.7
C16	88.1	86.1	85.6	84.8	82.1	87.9	82.0	73.4	78.0	82.2	92.5	87.6	88.6
C17	148.4	137.0	134.5	115.5	103.8	71.9	87.9	105.7	132.6	138.6	137.6	131.4	140.7
C18	108.2	99.6	100.1	112.2	109.1	100.3	103.6	104.6	107.1	102.1	103.2	100.3	97.1
C20	106.6	110.4	109.2	103.7	98.5	105.6	108.1	103.7	107.8	87.7	107.5	102.0	90.5
C21	97.7	98.0	96.6	102.3	105.0	107.2	97.0	103.4	100.7	107.1	109.3	110.9	123.0
C22	115.4	115.2	118.3	111.0	102.9	103.4	113.0	100.5	107.7	112.7	118.9	117.7	113.0
C23	87.2	86.0	92.1	92.4	84.0	83.9	88.0	60.5	84.7	87.9	85.1	83.3	85.7
C24	110.2	106.0	96.2	108.6	113.6	97.2	111.6	101.1	73.7	113.5	96.0	97.8	101.0
C25	111.9	100.5	113.0	130.5	114.2	89.1	99.3	95.9	100.7	94.9	111.0	94.7	92.5
C26	142.9	121.6	115.4	120.4	133.9	110.6	149.7	134.0	131.5	140.7	145.8	150.9	117.2
C27	158.9	153.7	142.7	145.3	158.1	153.9	150.7	154.8	168.9	185.2	188.1	188.9	181.0
C28	125.1	117.7	125.4	122.6	124.7	116.1	131.9	133.5	139.9	137.4	142.8	138.7	134.2
C29	153.0	153.5	128.8	149.1	143.5	127.5	127.4	144.3	142.0	146.3	146.7	149.0	146.7
C30	68.3	47.7	78.7	62.8	86.6	54.1	98.7	88.9	98.9	95.7	75.5	117.6	74.7
C31	113.0	117.1	112.7	114.9	109.9	109.2	105.3	94.1	101.1	102.1	114.7	111.9	110.4
C32	169.1	161.6	141.8	140.9	133.8	131.6	187.8	135.8	163.0	171.3	182.8	167.0	166.6
C33	79.9	94.8	131.5	99.0	112.4	102.9	102.4	111.9	98.5	98.4	109.9	100.2	90.0
D	123.3	118.5	110.1	117.8	120.9	116.2	114.7	116.6	105.4	111.7	113.4	111.1	125.6
D35	123.3	118.5	110.1	117.8	120.9	116.2	114.7	116.6	105.4	111.7	113.4	111.1	125.6



Table 4

Industrial Production Indices
(Working day adjusted, 2005=100)

NACE.BG - 2008 Code	2009	2010	2011						2012						
	VII	VII	VII	VIII	IX	X	XI	XII	I	II	III	IV	V	VI	VII
B_TO_E36	98.9	101.3	108.8	101.1	103.8	108.5	108.3	103.9	93.2	91.5	103.1	100.6	101.4	106.4	109.2
B	74.8	76.0	83.9	79.5	86.4	94.1	82.0	96.0	76.9	72.7	80.4	74.0	74.0	76.3	85.2
B05	86.0	99.3	109.7	112.2	125.2	140.9	146.8	131.2	108.8	106.4	113.5	92.1	101.8	72.2	108.4
B07	76.3	75.2	78.8	65.9	77.4	79.6	46.6	90.6	73.0	65.6	72.5	73.4	61.6	84.4	72.3
B08	80.8	66.1	70.2	68.9	62.0	74.4	65.1	67.0	42.2	39.6	58.9	66.0	69.4	86.6	103.4
C	98.6	103.1	110.4	101.1	107.2	108.6	106.2	95.7	85.1	83.4	103.2	102.8	107.0	113.5	109.3
C10	116.7	117.8	112.5	112.4	120.1	122.8	115.7	112.3	89.3	98.7	113.3	106.8	108.4	112.1	114.7
C11	116.4	106.8	110.1	108.3	95.5	77.8	75.1	87.2	49.0	52.6	83.8	85.5	98.5	108.9	110.0
C12	112.7	120.1	116.2	115.6	104.1	107.5	136.9	103.7	91.8	89.9	118.1	102.7	139.6	167.1	154.5
C13	73.0	77.9	74.6	63.6	63.7	61.2	67.4	53.3	48.4	55.7	65.1	66.3	61.9	62.3	55.2
C14	83.9	78.3	83.5	70.4	68.5	68.5	63.9	64.5	65.6	60.3	65.3	60.6	57.5	74.4	72.9
C15	100.9	87.3	95.2	78.6	84.3	77.7	70.0	65.2	68.6	63.6	67.3	51.6	63.0	84.2	84.1
C16	79.3	92.8	96.2	89.9	93.2	93.6	87.8	83.4	62.9	56.8	74.5	78.6	91.2	94.2	95.7
C17	70.7	133.4	157.1	139.1	139.9	112.9	101.9	69.5	80.7	96.2	138.1	143.0	139.0	142.5	148.4
C18	118.8	101.1	108.3	103.9	106.2	124.6	118.1	113.3	85.2	91.3	101.1	96.8	96.6	104.5	96.9
C20	77.7	97.1	108.0	104.6	110.2	100.9	101.8	104.3	100.3	97.1	119.0	90.0	105.8	105.9	90.7
C21	64.3	73.1	84.1	97.6	95.5	114.7	115.7	110.0	75.6	103.6	105.1	105.8	106.0	126.4	114.5
C22	114.4	128.6	127.6	117.9	124.6	124.4	109.3	97.9	90.6	83.9	108.7	109.4	115.7	127.9	124.3
C23	94.9	88.7	95.6	90.1	102.1	103.8	88.5	72.4	60.5	48.3	82.4	91.0	91.5	93.4	94.7
C24	104.0	105.7	120.1	101.5	88.1	118.1	117.3	76.1	105.8	97.0	83.6	119.4	99.5	96.5	109.6
C25	85.2	98.6	116.8	100.5	116.4	129.4	120.2	105.6	70.9	84.9	103.5	94.9	108.9	101.4	95.6
C26	100.7	106.0	142.6	110.8	123.2	122.3	139.4	138.1	128.0	114.7	135.4	137.2	139.5	158.0	114.4
C27	131.0	147.6	170.8	139.8	150.9	163.8	181.5	147.4	136.1	142.8	170.1	185.0	180.5	205.8	193.3
C28	107.5	115.7	136.1	108.6	129.9	131.3	132.5	112.1	111.3	126.4	149.1	134.3	141.0	154.5	143.0
C29	117.5	130.1	149.8	137.2	127.3	157.3	158.5	120.1	114.7	133.6	150.0	151.8	152.3	161.1	146.4
C30	141.7	90.7	74.7	49.5	86.3	52.2	81.5	59.4	57.7	70.3	108.4	88.1	100.4	141.5	76.3
C31	97.9	97.7	117.0	118.5	115.2	126.2	119.7	114.1	86.8	81.2	102.0	97.8	112.2	118.7	114.7
C32	164.4	114.4	169.1	164.4	152.6	163.0	142.8	121.7	151.8	117.1	160.3	165.9	182.8	190.0	166.3
C33	98.4	121.1	81.7	93.3	141.3	102.7	121.7	140.7	70.2	93.9	98.1	89.4	103.8	105.9	91.6
D	108.1	105.1	115.3	108.1	97.2	113.4	129.3	140.9	131.7	129.7	114.7	103.8	95.0	95.2	118.9
D35	108.1	105.1	115.3	108.1	97.2	113.4	129.3	140.9	131.7	129.7	114.7	103.8	95.0	95.2	118.9