

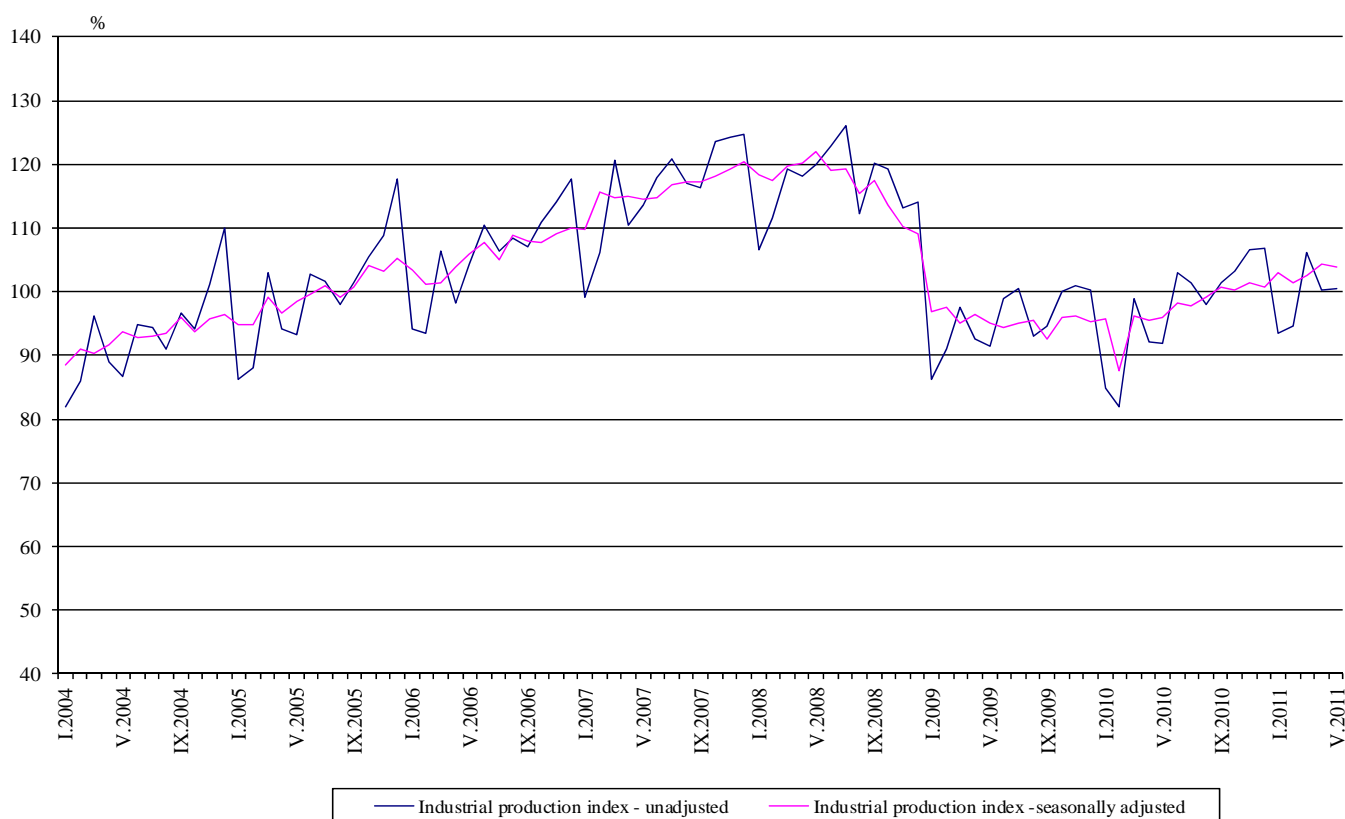


Industrial Production Indices in May 2011¹

The preliminary data showed that the Industrial Production Index², seasonally adjusted³, decreased by 0.5% in May 2011 as compared to April 2011.

In May 2011 working day adjusted⁴ Industrial Production Index rose by 7.8% as compared to the same month of 2010.

Figure 1. Industrial Production Indices (2005=100)



¹May 2011 data are preliminary.

² Monthly Industrial Production and Industrial turnover indices measure changes in **production and turnover values** of industrial enterprises. This information can be used to access the current economic development and for short-term forecasts. Indices do not measure the actual production level, it aims to measure the average change in value of production between two points of time

Indices are compiled on the base of information collected through representative sampling survey on industrial enterprises. The sample covers enterprises with annual turnover more than 97% of total turnover in industry.

Industrial production indices are calculated at constant base year (2005) that is to say they are weighted with the structure of the value added at factor costs in the base year.

³ **Seasonal adjustment** is a statistical method, which eliminates the seasonal component of time series and it is particularly suitable for long-term comparisons and analysis of the data.

⁴ **Working day adjustment** is an adjustment for variations caused by calendar effects, different number of calendar and working days in the months, national holidays and outliers (for example the presence of more non-working days in May could contribute to the decline in the production in some activities).

The seasonally and working day adjusted data on Industrial production index for the period 2000-2010 can be found in NSI internet web-site: (<http://www.nsi.bg/otrasalen.php?otr=46>).

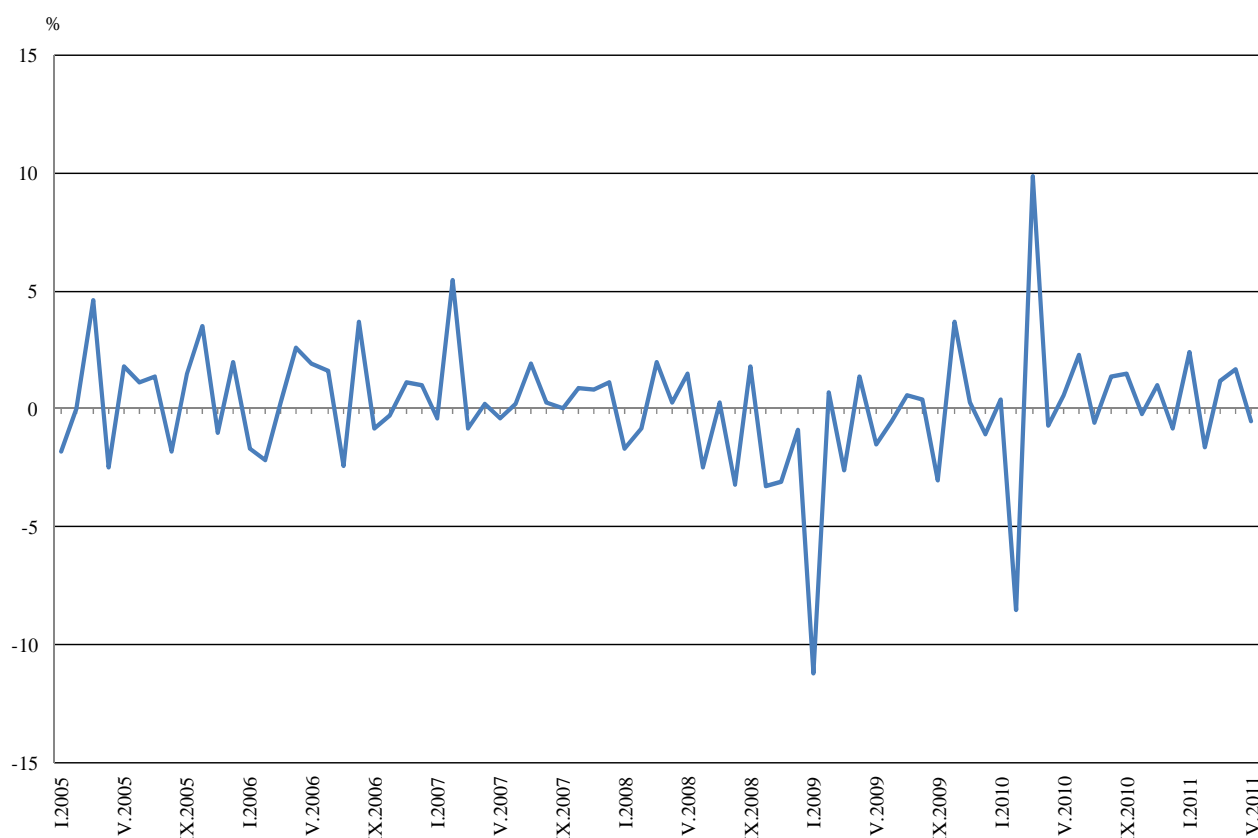


Monthly comparisons

In May 2011 as compared to April 2011, the seasonally adjusted Industrial Production Index in the electricity, gas, steam and air conditioning supply decreased by 6.0%, while in the mining and quarrying industry increased by 9.8% and in the manufacturing by 1.9%.

The most significant increases of production in the manufacturing were seen in the manufacture of rubber and plastic products by 13.7%, in the manufacture of machinery and equipment n.e.c by 11.7%, in the manufacture of chemicals and chemical products by 10.7%, in the manufacture of basic metals by 10.3%. There was decrease in the repair and installation of machinery and equipment by 15.7%, in the manufacture of wood and of products of wood and cork, except furniture; manufacture of articles of straw and plaiting materials by 7.4%, in the manufacture of tobacco products by 6.7% .

Figure 2. Percentage changes of Industrial Production Indices compared to the previous month (seasonally adjusted)



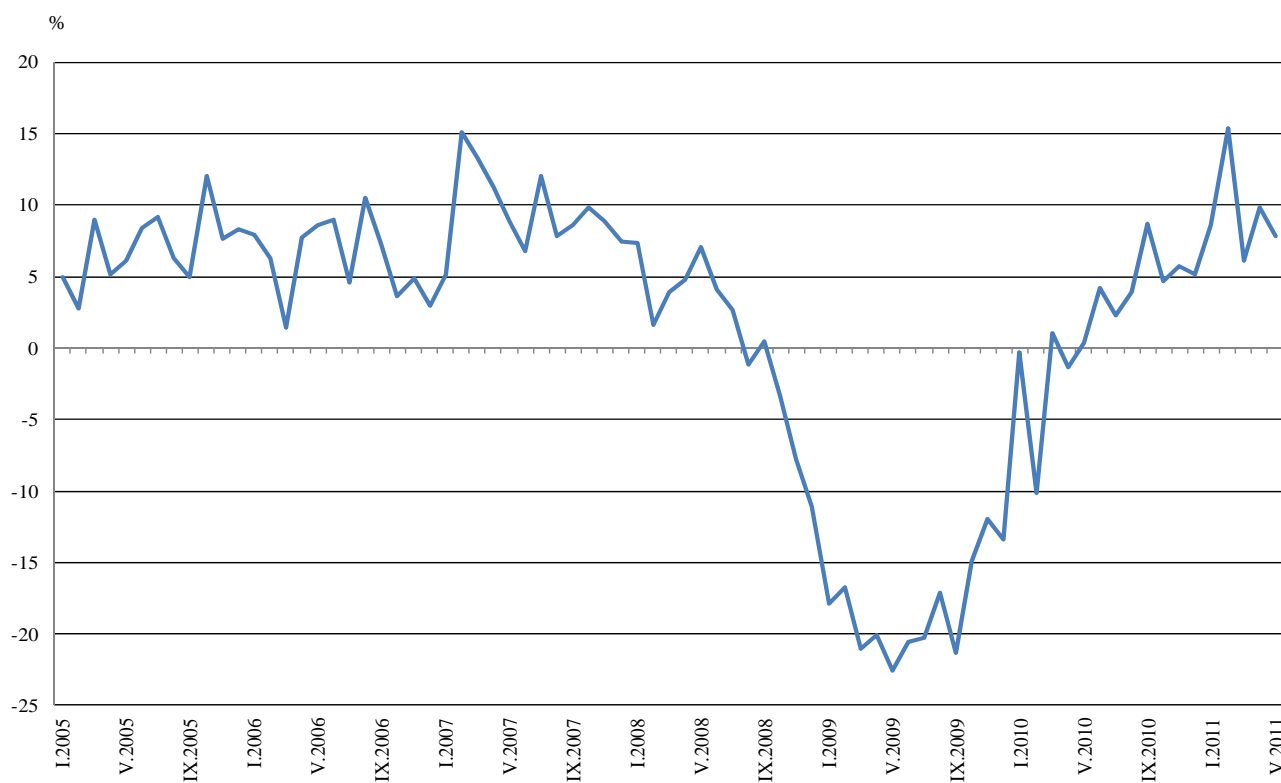


Annual comparisons

On annual bases in May 2011 Industrial Production Index, calculated from working day adjusted data in the mining and quarrying industry grew by 20.8%, in the electricity, gas, steam and air conditioning supply by 12.7% and in the manufacturing by 5.9%.

Increases were registered in the production of investment goods by 15.4%, in the production of intermediate goods by 11.7% and in the production of energy by 9.6%.

Figure 3. Percentage changes of Industrial Production Indices compared to the same month of the previous year
(working day adjusted)



The final data on Industrial Production and Turnover Indices for April 2011 can be found in NSI internet web-site: (<http://www.nsi.bg/otrasalen.php?otr=46>).

Percentage changes of Industrial Production Indices compared to the previous month*

Economic Activities	NACE.BG - 2008 Code	2010	2011				
		XII	I	II	III	IV	V
Industry	B_TO_E36	-0.8	2.4	-1.6	1.2	1.7	-0.5
Mining and quarrying	B	-9.6	0.0	-13.1	12.0	1.4	9.8
of which:							
Mining of coal and lignite	B05	-5.9	4.0	3.5	7.7	15.8	5.8
Mining of metal ores	B07	-10.6	23.8	-28.6	6.8	-7.9	0.3
Other mining and quarrying	B08	-2.1	-1.1	2.8	-14.7	12.6	4.9
Manufacturing	C	-12.0	17.1	-5.6	-0.3	1.0	1.9
of which:							
Manufacture of food products	C10	-5.5	3.5	0.4	-6.7	0.8	-3.4
Manufacture of beverages	C11	-7.7	10.6	2.8	-9.5	2.8	-1.0
Manufacture of tobacco products	C12	6.1	13.3	-2.3	-8.8	3.9	-6.7
Manufacture of textiles	C13	-4.2	9.8	0.4	-4.6	11.6	3.8
Manufacture of wearing apparel	C14	-2.5	2.6	0.8	-5.2	2.8	-0.3
Manufacture of leather and related products	C15	0.0	-1.8	-0.5	3.2	-1.7	1.2
Manufacture of wood and of products of wood and cork, except furniture; manufacture of articles of straw and plaiting materials	C16	-1.4	6.0	-1.0	-4.9	3.6	-7.4
Manufacture of paper and paper products	C17	-2.4	14.2	-7.9	6.7	1.0	7.3
Printing and reproduction of recorded media	C18	-4.5	5.8	-0.5	-2.9	-8.3	5.1
Manufacture of chemicals and chemical products	C20	-19.9	23.8	3.1	-15.9	6.6	10.7
Manufacture of basic pharmaceutical products and pharmaceutical preparations	C21	1.5	-1.8	6.7	0.7	5.3	-4.4
Manufacture of rubber and plastic products	C22	-4.0	5.6	-0.6	-4.1	-5.5	13.7
Manufacture of other non-metallic mineral products	C23	-11.8	17.5	4.4	-3.1	-4.6	-0.2
Manufacture of basic metals	C24	0.3	13.2	-6.7	0.7	4.5	10.3
Manufacture of fabricated metal products, except machinery and equipment	C25	-20.2	28.6	-20.5	20.4	-2.0	1.8
Manufacture of computer, electronic and optical products	C26	2.9	7.4	3.2	-8.2	-6.4	11.9
Manufacture of electrical equipment	C27	0.5	8.4	1.9	-2.4	-0.9	-0.6
Manufacture of machinery and equipment n.e.c.	C28	-4.2	5.0	4.6	3.5	-3.2	11.7
Manufacture of motor vehicles, trailers and semi-trailers	C29	1.1	-4.2	-4.2	-0.3	-0.1	5.2
Manufacture of other transport equipment	C30	17.3	56.8	-16.4	2.7	1.8	29.6
Manufacture of furniture	C31	-10.0	10.3	-1.9	-2.3	0.9	2.1
Other manufacturing	C32	-11.6	14.7	-14.4	-3.6	-5.9	17.4
Repair and installation of machinery and equipment	C32	19.8	-5.8	-3.1	-10.6	7.0	-15.7
Electricity, gas, steam and air conditioning supply	D	3.4	-0.8	8.1	1.1	5.8	-6.0
Electricity, gas, steam and air conditioning supply	D35	3.4	-0.8	8.1	1.1	5.8	-6.0

* Seasonally adjusted



Table 2

Percentage changes of Industrial Production Indices compared to the same month of the previous year *

Economic Activities	NACE.BG - 2008 Code	2010	2011				
		XII	I	II	III	IV	V
Industry	B_TO_E36	5.2	8.6	15.4	6.1	9.8	7.8
Mining and quarrying	B	1.3	15.5	-1.0	3.2	16.1	20.8
of which:							
Mining of coal and lignite	B05	11.4	12.3	11.2	25.1	101.6	63.8
Mining of metal ores	B07	-6.1	16.6	-20.2	-13.7	-26.2	-13.4
Other mining and quarrying	B08	-9.7	-12.4	-1.8	-22.9	7.8	0.8
Manufacturing	C	7.6	13.3	22.5	7.7	5.8	5.9
of which:							
Manufacture of food products	C10	0.6	5.3	7.0	-0.6	3.2	-11.1
Manufacture of beverages	C11	-1.2	6.8	21.2	-7.8	0.4	-1.5
Manufacture of tobacco products	C12	6.0	32.3	53.5	-9.5	26.2	1.8
Manufacture of textiles	C13	-1.8	16.3	22.1	3.5	7.2	15.0
Manufacture of wearing apparel	C14	1.3	4.6	11.2	0.6	3.9	2.4
Manufacture of leather and related products	C15	6.4	-5.6	-14.2	9.2	1.8	12.5
Manufacture of wood and of products of wood and cork, except furniture; manufacture of articles of straw and plaiting materials	C16	12.6	32.4	24.9	3.8	5.1	-1.0
Manufacture of paper and paper products	C17	53.0	57.8	33.5	32.4	34.2	32.8
Printing and reproduction of recorded media	C18	-2.1	-7.1	4.5	-4.7	-15.1	-10.1
Manufacture of chemicals and chemical products	C20	4.0	42.5	51.3	9.5	19.1	29.0
Manufacture of basic pharmaceutical products and pharmaceutical preparations	C21	-2.4	-9.4	7.7	15.0	15.1	4.8
Manufacture of rubber and plastic products	C22	8.0	15.5	28.5	10.5	2.6	9.9
Manufacture of other non-metallic mineral products	C23	4.3	29.4	31.8	16.9	13.4	0.0
Manufacture of basic metals	C24	-0.5	13.3	-2.5	0.5	1.7	16.3
Manufacture of fabricated metal products, except machinery and equipment	C25	21.6	42.0	-11.5	11.7	18.9	16.0
Manufacture of computer, electronic and optical products	C26	10.4	23.4	23.4	23.3	3.6	33.0
Manufacture of electrical equipment	C27	1.9	1.5	18.8	6.3	9.1	4.0
Manufacture of machinery and equipment n.e.c.	C28	13.9	19.9	22.6	22.8	13.3	28.7
Manufacture of motor vehicles, trailers and semi-trailers	C29	30.3	15.3	-10.6	-12.2	-14.7	-0.8
Manufacture of other transport equipment	C30	-11.7	26.0	11.4	2.8	9.6	24.6
Manufacture of furniture	C31	13.6	21.4	19.0	10.2	12.4	14.9
Other manufacturing	C32	36.6	30.1	8.9	-5.0	-8.4	13.2
Repair and installation of machinery and equipment	C33	45.2	13.7	3.9	-15.8	-6.4	-5.2
Electricity, gas, steam and air conditioning supply	D	0.9	-2.4	5.9	7.6	18.3	12.7
Electricity, gas, steam and air conditioning supply	D35	0.9	-2.4	5.9	7.6	18.3	12.7

* Working day adjusted



Table 3

Industrial Production Indices
(seasonally adjusted, 2005=100)

NACE.BG - 2008 Code	2010								2011				
	V	VI	VII	VIII	IX	X	XI	XII	I	II	III	V	V
B_TO_E36	96.1	98.3	97.7	99.1	100.6	100.4	101.4	100.6	103.0	101.4	102.6	104.3	103.8
B	71.1	78.0	74.9	72.8	80.0	83.0	87.7	79.3	79.3	68.9	77.2	78.3	86.0
B05	98.0	102.6	96.4	102.3	102.2	107.5	105.7	99.5	103.5	107.1	115.4	133.6	141.3
B07	71.2	76.5	77.0	74.8	77.8	64.0	78.4	70.1	86.8	62.0	66.2	61.0	61.2
B08	67.5	67.4	64.3	62.2	69.4	65.2	66.4	65.0	64.3	66.1	56.4	63.5	66.6
C	97.6	98.3	97.4	98.9	101.3	101.4	103.8	91.3	106.9	100.9	100.6	101.6	103.5
C10	121.6	120.9	117.3	117.7	122.5	115.6	121.3	114.6	118.6	119.1	111.1	112.0	108.2
C11	88.0	87.2	88.5	90.3	91.1	81.6	89.8	82.9	91.7	94.3	85.3	87.7	86.8
C12	95.5	104.1	102.8	95.4	89.1	91.3	95.4	101.2	114.7	112.1	102.2	106.2	99.1
C13	68.8	69.0	69.8	66.3	69.6	67.9	66.1	63.3	69.5	69.8	66.6	74.3	77.1
C14	68.3	66.4	70.1	68.1	71.7	71.5	70.8	69.0	70.8	71.4	67.7	69.6	69.4
C15	74.0	77.4	77.2	78.6	79.2	78.1	77.7	77.7	76.3	75.9	78.3	77.0	77.9
C16	79.3	82.5	88.0	86.6	88.3	93.0	84.5	83.3	88.3	87.4	83.1	86.1	79.7
C17	121.0	146.9	128.6	146.5	140.1	108.2	134.6	131.4	150.0	138.2	147.4	148.9	159.8
C18	116.9	100.2	103.8	105.0	120.1	112.9	111.7	106.7	112.9	112.3	109.0	99.9	105.0
C20	93.9	88.4	96.2	102.7	104.5	103.5	118.3	94.7	117.2	120.8	101.6	108.3	119.9
C21	88.5	89.0	86.1	85.4	92.4	91.8	84.2	85.5	84.0	89.6	90.2	95.0	90.8
C22	113.2	111.5	115.4	112.1	120.9	112.1	119.0	114.2	120.6	119.9	115.0	108.7	123.6
C23	85.3	90.2	79.7	80.4	82.6	78.9	85.6	75.5	88.7	92.6	89.7	85.6	85.4
C24	100.1	93.6	99.0	96.4	99.6	101.1	92.6	92.9	105.2	98.1	98.8	103.2	113.8
C25	93.6	101.3	96.1	97.4	102.1	106.6	110.3	88.0	113.2	90.0	108.4	106.2	108.1
C26	94.6	101.3	109.1	110.7	103.8	115.1	114.8	118.1	126.8	130.8	120.1	112.4	125.8
C27	143.3	143.6	142.2	140.1	148.5	146.1	140.9	141.6	153.5	156.4	152.7	151.3	150.4
C28	106.1	110.0	107.4	113.4	112.9	115.7	113.1	108.3	113.7	118.9	123.1	119.2	133.2
C29	153.2	160.1	152.8	154.5	161.6	161.6	162.9	164.7	157.8	151.1	150.6	150.5	158.3
C30	114.5	86.9	76.9	112.1	69.9	55.3	60.2	70.6	110.7	92.5	95.0	96.7	125.3
C31	93.4	96.0	95.5	99.0	111.9	105.7	109.4	98.5	108.6	106.5	104.0	104.9	107.1
C32	135.5	126.3	116.7	124.1	134.9	139.7	165.5	146.3	167.8	143.6	138.4	130.2	152.9
C33	93.8	114.0	111.7	130.7	99.4	119.7	104.1	124.7	117.5	113.8	101.7	108.8	91.7
D	104.9	114.1	115.6	114.7	109.2	115.4	103.9	107.4	106.5	115.1	116.4	123.1	115.7
D35	104.9	114.1	115.6	114.7	109.2	115.4	103.9	107.4	106.5	115.1	116.4	123.1	115.7



Table 4

Industrial Production Indices
(working day adjusted, 2005=100)

NACE.BG - 2008 Code	2008	2009	2010								2011				
	V	V	V	VI	VII	VIII	IX	X	XI	XII	I	II	III	IV	V
B_TO_E36	123.6	95.7	96.1	102.3	101.5	98.3	103.5	105.0	107.4	107.1	94.9	95.0	105.3	101.9	103.6
B	102.0	73.7	71.6	78.5	75.4	73.3	80.5	83.6	88.2	79.8	79.8	69.3	77.7	78.8	86.5
B05	97.8	76.8	80.2	92.2	96.0	94.3	106.7	129.3	125.4	110.2	117.1	112.1	112.7	113.9	131.4
B07	102.9	82.3	81.3	82.4	76.0	73.1	77.9	69.0	80.9	73.5	75.9	53.4	68.0	67.2	70.4
B08	144.7	91.2	73.1	72.6	65.8	64.6	77.0	72.8	74.3	71.9	41.6	53.3	53.6	62.2	73.7
C	130.4	99.6	101.9	105.5	103.6	99.3	107.2	105.9	108.6	103.3	88.4	89.2	104.0	99.9	107.9
C10	122.0	112.5	126.9	124.5	118.3	121.7	136.3	126.5	130.7	126.9	100.2	102.4	110.6	108.5	112.8
C11	139.4	117.9	98.7	105.7	107.6	114.8	98.3	73.8	88.3	102.3	57.8	62.4	78.8	86.0	97.2
C12	142.6	136.1	106.6	116.0	119.6	115.6	112.4	117.4	113.0	104.6	80.3	73.7	87.2	91.4	108.5
C13	128.5	81.0	81.2	78.2	78.8	50.9	70.0	70.3	71.7	58.8	57.0	69.0	76.1	81.7	93.4
C14	102.0	75.4	67.0	68.7	79.9	66.3	72.6	73.8	74.1	75.8	70.2	71.7	69.0	63.9	68.6
C15	95.4	78.8	62.3	80.7	91.4	76.9	89.0	84.8	76.0	71.7	75.7	74.1	84.1	69.7	70.1
C16	119.0	69.2	82.3	88.4	93.2	88.3	96.5	100.6	93.3	82.4	72.0	76.3	82.9	84.7	81.5
C17	115.4	78.0	123.2	151.8	132.0	147.3	145.0	111.5	137.6	133.4	144.4	130.3	149.2	149.6	163.6
C18	120.8	114.3	120.2	105.3	103.8	110.7	134.3	123.0	121.8	128.0	93.7	97.7	104.4	96.6	108.0
C20	120.1	64.3	92.2	93.3	98.1	96.4	107.2	99.9	125.0	93.6	106.7	114.1	107.1	109.9	118.9
C21	104.5	79.3	94.1	98.5	73.4	84.2	97.6	101.0	91.7	91.2	72.6	90.9	99.5	96.0	98.6
C22	139.7	108.3	113.7	120.7	127.1	114.0	129.7	125.7	129.3	114.3	97.4	102.9	118.7	108.1	124.9
C23	171.0	101.9	94.7	99.4	88.9	86.5	94.2	90.5	94.2	72.9	58.5	70.0	85.6	87.8	94.7
C24	117.6	94.3	99.3	93.8	105.4	93.5	95.2	107.5	94.4	77.8	94.5	96.5	108.5	103.9	115.5
C25	137.7	81.8	94.6	109.4	99.3	98.4	106.9	103.7	116.9	112.4	81.5	79.6	112.1	107.5	109.7
C26	102.3	112.7	97.4	104.0	105.5	98.9	113.8	115.1	119.3	156.6	106.9	109.5	124.0	108.5	129.5
C27	177.5	126.4	146.9	146.2	148.6	125.7	173.6	170.7	160.3	146.8	142.8	145.8	155.3	146.5	152.8
C28	144.7	96.8	107.6	119.4	114.5	106.1	120.2	124.1	122.2	116.9	97.1	109.6	131.2	117.5	138.5
C29	139.8	109.5	162.1	174.7	135.3	123.6	160.6	169.9	162.1	158.2	156.5	130.4	150.0	139.5	160.8
C30	155.0	141.6	143.3	90.3	86.0	147.3	78.3	49.7	54.1	93.8	56.2	65.6	91.9	76.8	178.6
C31	149.6	104.1	99.3	101.3	98.0	97.8	119.0	114.1	120.9	112.8	91.9	95.1	108.8	103.9	114.1
C32	166.4	163.4	145.6	141.3	115.0	122.7	150.7	164.2	183.3	143.0	133.9	124.2	137.8	126.7	164.8
C33	122.9	96.2	90.3	121.9	119.6	131.6	103.3	124.7	111.0	170.5	80.6	93.7	101.7	100.1	85.6
D	112.0	90.8	86.6	100.0	104.4	103.8	99.1	111.4	112.8	134.6	125.6	128.5	129.2	115.6	97.6
D35	112.0	90.8	86.6	100.0	104.4	103.8	99.1	111.4	112.8	134.6	125.6	128.5	129.2	115.6	97.6