

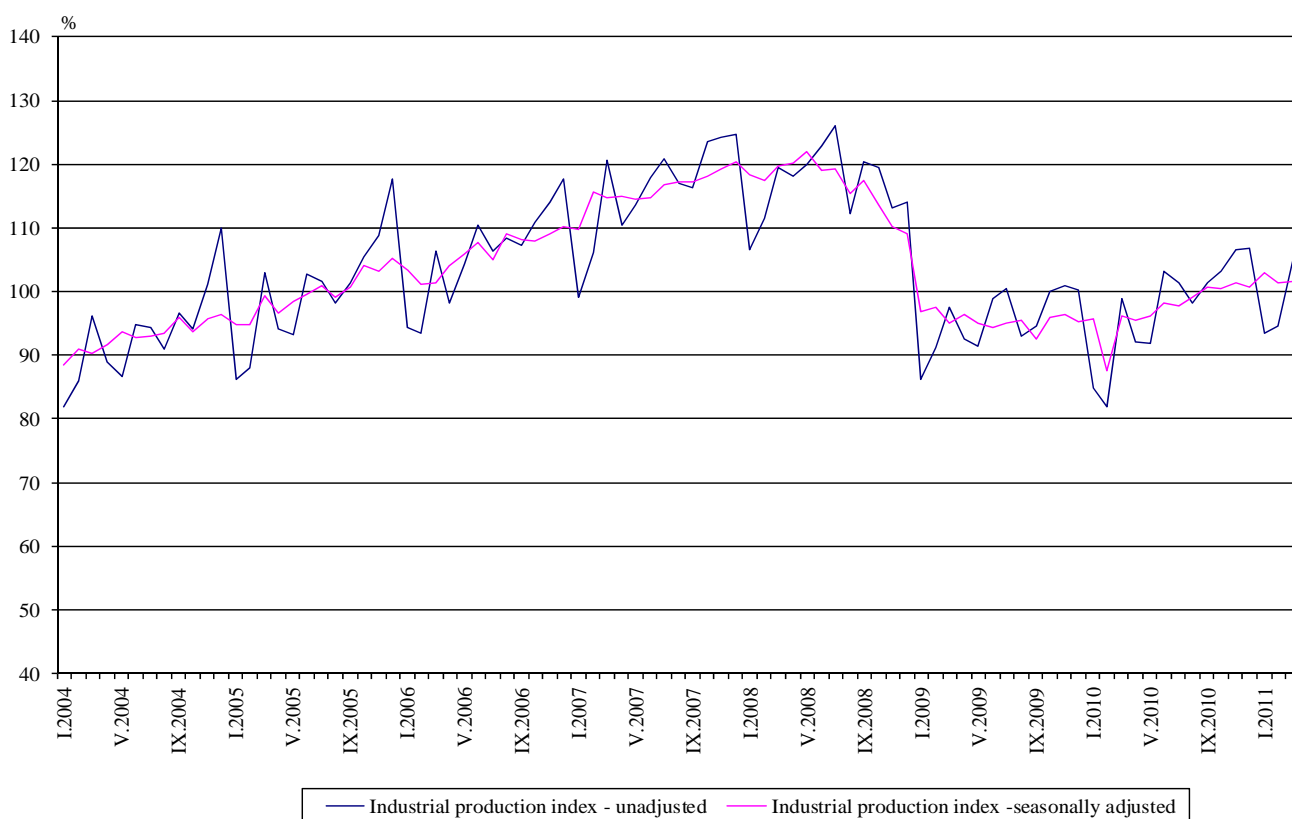


Industrial Production Indices in March 2011¹

The preliminary data showed that the Industrial Production Index², seasonally adjusted³, increased by 0.1% in March 2011 as compared to February 2011.

In March 2011 working day adjusted⁴ Industrial Production Index rose by 5.1% as compared to the same month of 2010.

Figure 1. Industrial Production Indices (2005=100)



¹March 2011 data are preliminary.

² Monthly Industrial Production indices measure changes in **production values** of industrial enterprises. This information can be used to access the current economic development and for short-term forecasts. Indices do not measure the actual production level, it aims to measure the average change in value of production between two points of time

Indices are compiled on the base of information collected through representative sampling survey on industrial enterprises. The sample covers enterprises with annual turnover more than 97% of total turnover in industry.

Industrial production indices are calculated at constant base year (2005) that is to say they are weighted with the structure of the value added at factor costs in the base year.

³ **Seasonal adjustment** is a statistical method, which eliminates the seasonal component of time series and it is particularly suitable for long-term comparisons and analysis of the data.

⁴ **Working day adjustment** is an adjustment for variations caused by calendar effects, different number of calendar and working days in the months, national holidays and outliers (for example the presence of more non-working days in May could contribute to the decline in the production in some activities).

The seasonally and working day adjusted data on Industrial production index for the period 2000-2010 can be found in NSI internet web-site: (<http://www.nsi.bg/otrasalen.php?otr=46>).

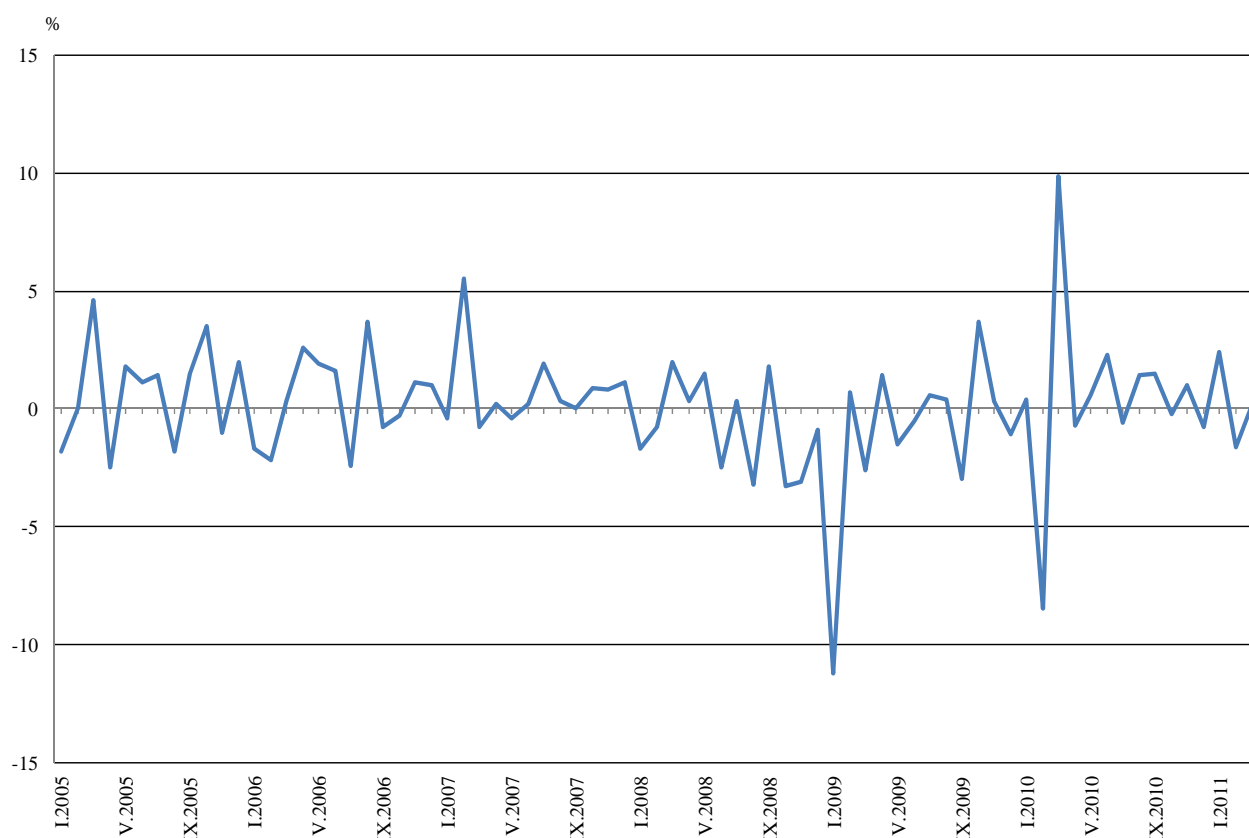


Monthly comparisons

In March 2011 as compared to February 2011, the seasonally adjusted Industrial Production Index in the mining and quarrying industry increased by 12.2%, while decreases were registered in the manufacturing by 1.0% and in the electricity, gas, steam and air conditioning supply by 1.1%.

The most significant decreases of production in the manufacturing were seen in the manufacture of chemicals and chemical products by 17.9%, in the manufacture of wood and of products of wood and cork, except furniture; manufacture of articles of straw and plaiting materials by 9.7%, in the manufacture of beverages by 9.4%, in the manufacture of food products by 7.7%. There was increase in the manufacture of fabricated metal products, except machinery and equipment by 18.9%, in the manufacture of paper and paper products by 4.3%, in the manufacture of machinery and equipment n.e.c by 3.4%.

Figure 2. Percentage changes of Industrial Production Indices compared to the previous month (seasonally adjusted)



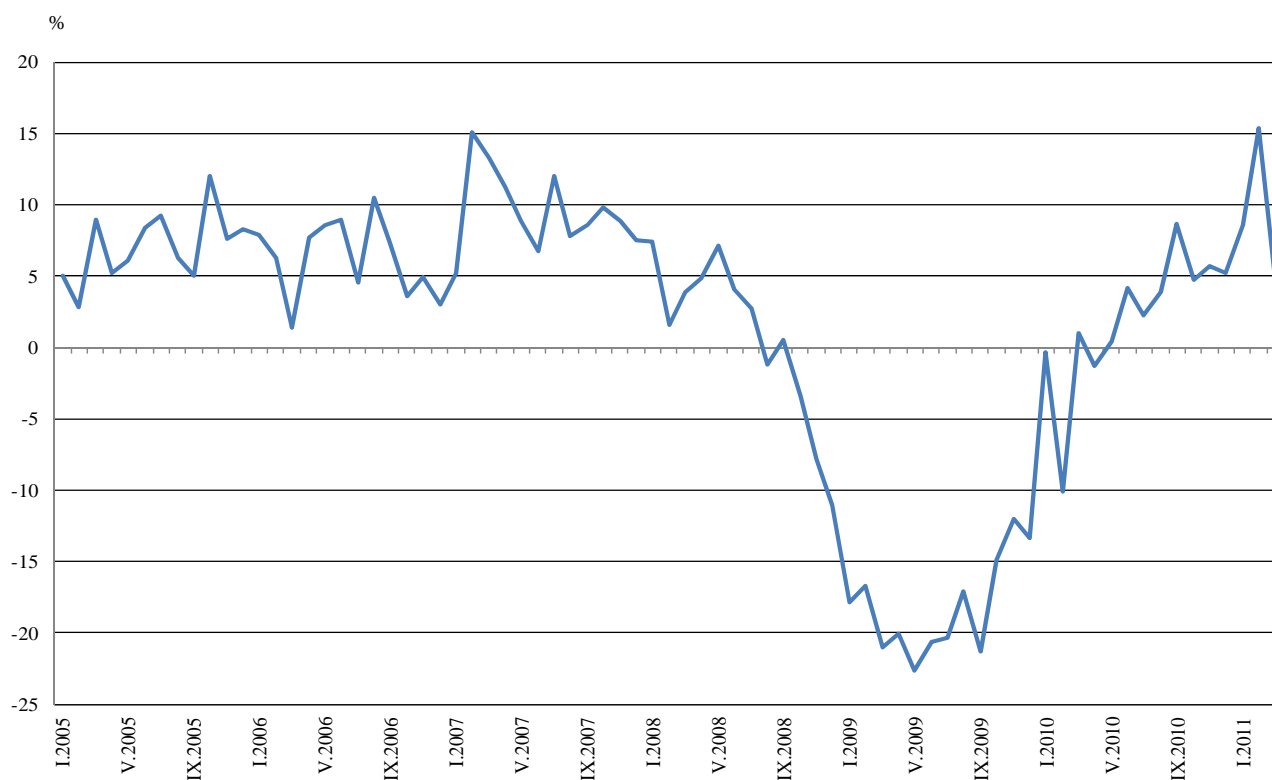


Annual comparisons

On annual bases in March 2011 Industrial Production Index, calculated from working day adjusted data in the manufacturing grew by 6.8%, in the electricity, gas, steam and air conditioning supply by 5.5% and in the mining and quarrying industry by 3.3%.

Increases were registered in the production of energy by 10.4%, in the production of investment goods by 7.0%, in the production of intermediate goods by 6.8%.

Figure 3. Percentage changes of Industrial Production Indices compared to the same month of the previous year
(working day adjusted)



The final data on Industrial Production and Turnover Indices for February 2011 can be found in NSI internet web-site: (<http://www.nsi.bg/otrasalen.php?otr=46>).



Table 1

Percentage changes of Industrial Production Indices compared to the previous month*

Economic Activities	NACE.BG - 2008 Code	2010			2011		
		X	XI	XII	I	II	III
Industry	B_TO_E36	-0.2	1.0	-0.8	2.4	-1.6	0.1
Mining and quarrying	B	3.8	5.7	-9.6	0.0	-13.1	12.2
of which:							
Mining of coal and lignite	B05	5.2	-1.7	-5.9	4.0	3.5	5.4
Mining of metal ores	B07	-17.7	22.5	-10.6	23.8	-28.6	8.1
Other mining and quarrying	B08	-6.1	1.8	-2.1	-1.1	2.8	-14.8
Manufacturing	C	0.1	2.4	-12.0	17.1	-5.6	-1.0
of which:							
Manufacture of food products	C10	-5.6	4.9	-5.5	3.5	0.4	-7.7
Manufacture of beverages	C11	-10.4	10.0	-7.7	10.6	2.8	-9.4
Manufacture of tobacco products	C12	2.5	4.5	6.1	13.3	-2.3	-8.3
Manufacture of textiles	C13	-2.4	-2.7	-4.2	9.8	0.4	-4.2
Manufacture of wearing apparel	C14	-0.3	-1.0	-2.5	2.6	0.8	-5.7
Manufacture of leather and related products	C15	-1.4	-0.5	0.0	-1.8	-0.5	3.2
Manufacture of wood and of products of wood and cork, except furniture; manufacture of articles of straw and plaiting materials	C16	5.3	-9.1	-1.4	6.0	-1.0	-9.7
Manufacture of paper and paper products	C17	-22.8	24.4	-2.4	14.2	-7.9	4.3
Printing and reproduction of recorded media	C18	-6.0	-1.1	-4.5	5.8	-0.5	-3.3
Manufacture of chemicals and chemical products	C20	-1.0	14.3	-19.9	23.8	3.1	-17.9
Manufacture of basic pharmaceutical products and pharmaceutical preparations	C21	-0.6	-8.3	1.5	-1.8	6.7	-0.4
Manufacture of rubber and plastic products	C22	-7.3	6.2	-4.0	5.6	-0.6	-6.6
Manufacture of other non-metallic mineral products	C23	-4.5	8.5	-11.8	17.5	4.4	-3.3
Manufacture of basic metals	C24	1.5	-8.4	0.3	13.2	-6.7	-0.1
Manufacture of fabricated metal products, except machinery and equipment	C25	4.4	3.5	-20.2	28.6	-20.5	18.9
Manufacture of computer, electronic and optical products	C26	10.9	-0.3	2.9	7.4	3.2	-6.4
Manufacture of electrical equipment	C27	-1.6	-3.6	0.5	8.4	1.9	-2.0
Manufacture of machinery and equipment n.e.c.	C28	2.5	-2.2	-4.2	5.0	4.6	3.4
Manufacture of motor vehicles, trailers and semi-trailers	C29	0.0	0.8	1.1	-4.2	-4.2	3.4
Manufacture of other transport equipment	C30	-20.9	8.9	17.3	56.8	-16.4	-9.2
Manufacture of furniture	C31	-5.5	3.5	-10.0	10.3	-1.9	-3.0
Other manufacturing	C32	3.6	18.5	-11.6	14.7	-14.4	-3.4
Repair and installation of machinery and equipment	C32	20.4	-13.0	19.8	-5.8	-3.1	-10.4
Electricity, gas, steam and air conditioning supply	D	5.7	-10.0	3.4	-0.8	8.1	-1.1
Electricity, gas, steam and air conditioning supply	D35	5.7	-10.0	3.4	-0.8	8.1	-1.1

* Seasonally adjusted



Table 2

Percentage changes of Industrial Production Indices compared to the same month of the previous year *

Economic Activities	NACE.BG - 2008 Code	2010			2011		
		X	XI	XII	I	II	III
Industry	B_TO_E36	4.7	5.7	5.2	8.6	15.4	5.1
Mining and quarrying	B	-9.5	-1.3	1.3	15.5	-1.0	3.3
of which:							
Mining of coal and lignite	B05	6.5	6.2	11.4	12.3	11.2	24.6
Mining of metal ores	B07	-24.1	-6.6	-6.1	16.6	-20.2	-13.1
Other mining and quarrying	B08	-8.0	-8.4	-9.7	-12.4	-1.8	-22.3
Manufacturing	C	6.9	11.5	7.6	13.3	22.5	6.8
of which:							
Manufacture of food products	C10	7.8	13.0	0.6	5.3	7.0	-1.9
Manufacture of beverages	C11	-19.0	-0.9	-1.2	6.8	21.2	-7.5
Manufacture of tobacco products	C12	-15.6	-16.7	6.0	32.3	53.5	-7.8
Manufacture of textiles	C13	4.1	3.0	-1.8	16.3	22.1	5.4
Manufacture of wearing apparel	C14	1.0	5.3	1.3	4.6	11.2	0.1
Manufacture of leather and related products	C15	0.2	2.3	6.4	-5.6	-14.2	6.6
Manufacture of wood and of products of wood and cork, except furniture; manufacture of articles of straw and plaiting materials	C16	31.0	9.6	12.6	32.4	24.9	-2.3
Manufacture of paper and paper products	C17	42.2	74.2	53.0	57.8	33.5	29.3
Printing and reproduction of recorded media	C18	-5.6	-5.3	-2.1	-7.1	4.5	-5.4
Manufacture of chemicals and chemical products	C20	17.9	48.1	4.0	42.5	51.3	5.8
Manufacture of basic pharmaceutical products and pharmaceutical preparations	C21	17.2	2.3	-2.4	-9.4	7.7	14.2
Manufacture of rubber and plastic products	C22	3.6	11.1	8.0	15.5	28.5	7.2
Manufacture of other non-metallic mineral products	C23	0.8	11.5	4.3	29.4	31.8	16.4
Manufacture of basic metals	C24	-0.6	-14.4	-0.5	13.3	-2.5	-0.3
Manufacture of fabricated metal products, except machinery and equipment	C25	23.9	35.9	21.6	42.0	-11.5	10.4
Manufacture of computer, electronic and optical products	C26	9.2	7.8	10.4	23.4	23.4	25.2
Manufacture of electrical equipment	C27	12.8	1.6	1.9	1.5	18.8	6.4
Manufacture of machinery and equipment n.e.c.	C28	25.4	20.3	13.9	19.9	22.6	22.0
Manufacture of motor vehicles, trailers and semi-trailers	C29	23.4	26.8	30.3	15.3	-10.6	-12.1
Manufacture of other transport equipment	C30	-62.5	-41.6	-11.7	26.0	11.4	-11.6
Manufacture of furniture	C31	25.1	28.6	13.6	21.4	19.0	9.2
Other manufacturing	C32	-15.6	24.9	36.6	30.1	8.9	-5.4
Repair and installation of machinery and equipment	C33	23.5	7.9	45.2	13.7	3.9	-15.6
Electricity, gas, steam and air conditioning supply	D	4.2	-7.2	0.9	-2.4	5.9	5.5
Electricity, gas, steam and air conditioning supply	D35	4.2	-7.2	0.9	-2.4	5.9	5.5

* Working day adjusted



Table 3

Industrial Production Indices
(seasonally adjusted, 2005=100)

NACE.BG - 2008 Code	2010										2011		
	III	IV	V	VI	VII	VIII	IX	X	XI	XI	I	II	III
B_TO_E36	96.2	95.5	96.1	98.3	97.7	99.1	100.6	100.4	101.4	100.6	103.0	101.4	101.5
B	74.8	67.4	71.1	78.0	74.9	72.8	80	83.0	87.7	79.3	79.3	68.9	77.3
B05	92.5	81.3	98.0	102.6	96.4	102.3	102.2	107.5	105.7	99.5	103.5	107.1	112.9
B07	76.6	84.0	71.2	76.5	77.0	74.8	77.8	64.0	78.4	70.1	86.8	62.0	67.0
B08	70.9	58.7	67.5	67.4	64.3	62.2	69.4	65.2	66.4	65.0	64.3	66.1	56.3
C	93.2	95.7	97.6	98.3	97.4	98.9	101.3	101.4	103.8	91.3	106.9	100.9	99.9
C10	111.5	108.5	121.6	120.9	117.3	117.7	122.5	115.6	121.3	114.6	118.6	119.1	109.9
C11	91.4	87.7	88.0	87.2	88.5	90.3	91.1	81.6	89.8	82.9	91.7	94.3	85.4
C12	111.2	89.3	95.5	104.1	102.8	95.4	89.1	91.3	95.4	101.2	114.7	112.1	102.8
C13	63.4	70.3	68.8	69.0	69.8	66.3	69.6	67.9	66.1	63.3	69.5	69.8	66.9
C14	66.3	67.3	68.3	66.4	70.1	68.1	71.7	71.5	70.8	69.0	70.8	71.4	67.3
C15	76.8	76.2	74.0	77.4	77.2	78.6	79.2	78.1	77.7	77.7	76.3	75.9	78.3
C16	79.2	81.9	79.3	82.5	88.0	86.6	88.3	93.0	84.5	83.3	88.3	87.4	78.9
C17	111.5	110.8	121.0	146.9	128.6	146.5	140.1	108.2	134.6	131.4	150.0	138.2	144.1
C18	114.8	117.0	116.9	100.2	103.8	105.0	120.1	112.9	111.7	106.7	112.9	112.3	108.6
C20	89.1	88.6	93.9	88.4	96.2	102.7	104.5	103.5	118.3	94.7	117.2	120.8	99.2
C21	79.3	86.4	88.5	89.0	86.1	85.4	92.4	91.8	84.2	85.5	84.0	89.6	89.2
C22	104.3	105.5	113.2	111.5	115.4	112.1	120.9	112.1	119.0	114.2	120.6	119.9	112.0
C23	77.1	75.5	85.3	90.2	79.7	80.4	82.6	78.9	85.6	75.5	88.7	92.6	89.5
C24	97.8	100.9	100.1	93.6	99.0	96.4	99.6	101.1	92.6	92.9	105.2	98.1	98.0
C25	97.6	89.4	93.6	101.3	96.1	97.4	102.1	106.6	110.3	88.0	113.2	90.0	107.0
C26	97.4	107.4	94.6	101.3	109.1	110.7	103.8	115.1	114.8	118.1	126.8	130.8	122.4
C27	145.3	138.4	143.3	143.6	142.2	140.1	148.5	146.1	140.9	141.6	153.5	156.4	153.3
C28	102.2	103.7	106.1	110.0	107.4	113.4	112.9	115.7	113.1	108.3	113.7	118.9	123.0
C29	152.0	154.4	153.2	160.1	152.8	154.5	161.6	161.6	162.9	164.7	157.8	151.1	156.3
C30	96.9	89.5	114.5	86.9	76.9	112.1	69.9	55.3	60.2	70.6	110.7	92.5	84.0
C31	94.0	92.9	93.4	96.0	95.5	99.0	111.9	105.7	109.4	98.5	108.6	106.5	103.3
C32	144.9	139.0	135.5	126.3	116.7	124.1	134.9	139.7	165.5	146.3	167.8	143.6	138.7
C33	118.7	116.5	93.8	114.0	111.7	130.7	99.4	119.7	104.1	124.7	117.5	113.8	102.0
D	107.7	107.1	104.9	114.1	115.6	114.7	109.2	115.4	103.9	107.4	106.5	115.1	113.8
D35	107.7	107.1	104.9	114.1	115.6	114.7	109.2	115.4	103.9	107.4	106.5	115.1	113.8



Table 4

Industrial Production Indices
(working day adjusted, 2005=100)

NACE.BG - 2008 Code	2008	2009	2010										2011		
	III	III	III	IV	V	VI	VII	VIII	IX	X	XI	XII	I	II	III
B_TO_E36	124.3	98.2	99.2	92.8	96.1	102.3	101.5	98.3	103.5	105.0	107.4	107.1	94.9	95.0	104.3
B	95.1	72.3	75.3	67.9	71.6	78.5	75.4	73.3	80.5	83.6	88.2	79.8	79.8	69.3	77.8
B05	104.7	93.1	90.1	56.5	80.2	92.2	96.0	94.3	106.7	129.3	125.4	110.2	117.1	112.1	112.3
B07	87.0	62.8	78.8	91.0	81.3	82.4	76.0	73.1	77.9	69.0	80.9	73.5	75.9	53.4	68.5
B08	130.0	89.0	69.5	57.7	73.1	72.6	65.8	64.6	77.0	72.8	74.3	71.9	41.6	53.3	54.0
C	127.7	93.4	96.6	94.4	101.9	105.5	103.6	99.3	107.2	105.9	108.6	103.3	88.4	89.2	103.2
C10	120.6	112.1	111.3	105.1	126.9	124.5	118.3	121.7	136.3	126.5	130.7	126.9	100.2	102.4	109.2
C11	125.0	92.5	85.5	85.7	98.7	105.7	107.6	114.8	98.3	73.8	88.3	102.3	57.8	62.4	79.1
C12	58.1	59.8	96.4	72.4	106.6	116.0	119.6	115.6	112.4	117.4	113.0	104.6	80.3	73.7	88.9
C13	136.2	87.2	73.5	76.2	81.2	78.2	78.8	50.9	70.0	70.3	71.7	58.8	57.0	69.0	77.5
C14	110.3	70.7	68.6	61.5	67.0	68.7	79.9	66.3	72.6	73.8	74.1	75.8	70.2	71.7	68.7
C15	120.5	78.2	77.0	68.5	62.3	80.7	91.4	76.9	89.0	84.8	76.0	71.7	75.7	74.1	82.1
C16	127.6	64.6	79.9	80.6	82.3	88.4	93.2	88.3	96.5	100.6	93.3	82.4	72.0	76.3	78.1
C17	117.1	77.1	112.7	111.5	123.2	151.8	132.0	147.3	145.0	111.5	137.6	133.4	144.4	130.3	145.7
C18	110.6	104.5	109.6	113.8	120.2	105.3	103.8	110.7	134.3	123.0	121.8	128.0	93.7	97.7	103.7
C20	134.2	71.3	97.8	92.3	92.2	93.3	98.1	96.4	107.2	99.9	125.0	93.6	106.7	114.1	103.5
C21	111.6	82.1	86.5	83.4	94.1	98.5	73.4	84.2	97.6	101.0	91.7	91.2	72.6	90.9	98.8
C22	141.7	110.0	107.4	105.4	113.7	120.7	127.1	114.0	129.7	125.7	129.3	114.3	97.4	102.9	115.1
C23	156.5	96.6	73.2	77.4	94.7	99.4	88.9	86.5	94.2	90.5	94.2	72.9	58.5	70.0	85.2
C24	131.2	108.6	108.0	102.2	99.3	93.8	105.4	93.5	95.2	107.5	94.4	77.8	94.5	96.5	107.7
C25	140.8	86.7	100.4	90.4	94.6	109.4	99.3	98.4	106.9	103.7	116.9	112.4	81.5	79.6	110.8
C26	106.7	90.7	100.6	104.7	97.4	104.0	105.5	98.9	113.8	115.1	119.3	156.6	106.9	109.5	126.0
C27	173.0	121.1	146.1	134.3	146.9	146.2	148.6	125.7	173.6	170.7	160.3	146.8	142.8	145.8	155.4
C28	147.8	109.5	106.8	103.7	107.6	119.4	114.5	106.1	120.2	124.1	122.2	116.9	97.1	109.6	130.3
C29	141.5	92.5	170.9	163.5	162.1	174.7	135.3	123.6	160.6	169.9	162.1	158.2	156.5	130.4	150.3
C30	190.3	71.5	89.4	70.1	143.3	90.3	86.0	147.3	78.3	49.7	54.1	93.8	56.2	65.6	79.0
C31	153.3	105.8	98.7	92.4	99.3	101.3	98.0	97.8	119.0	114.1	120.9	112.8	91.9	95.1	107.8
C32	156.3	121.1	145.1	138.3	145.6	141.3	115.0	122.7	150.7	164.2	183.3	143.0	133.9	124.2	137.2
C33	137.6	87.3	120.8	106.9	90.3	121.9	119.6	131.6	103.3	124.7	111.0	170.5	80.6	93.7	102.0
D	122.7	131.9	120.1	97.7	86.6	100.0	104.4	103.8	99.1	111.4	112.8	134.6	125.6	128.5	126.7
D35	122.7	131.9	120.1	97.7	86.6	100.0	104.4	103.8	99.1	111.4	112.8	134.6	125.6	128.5	126.7