

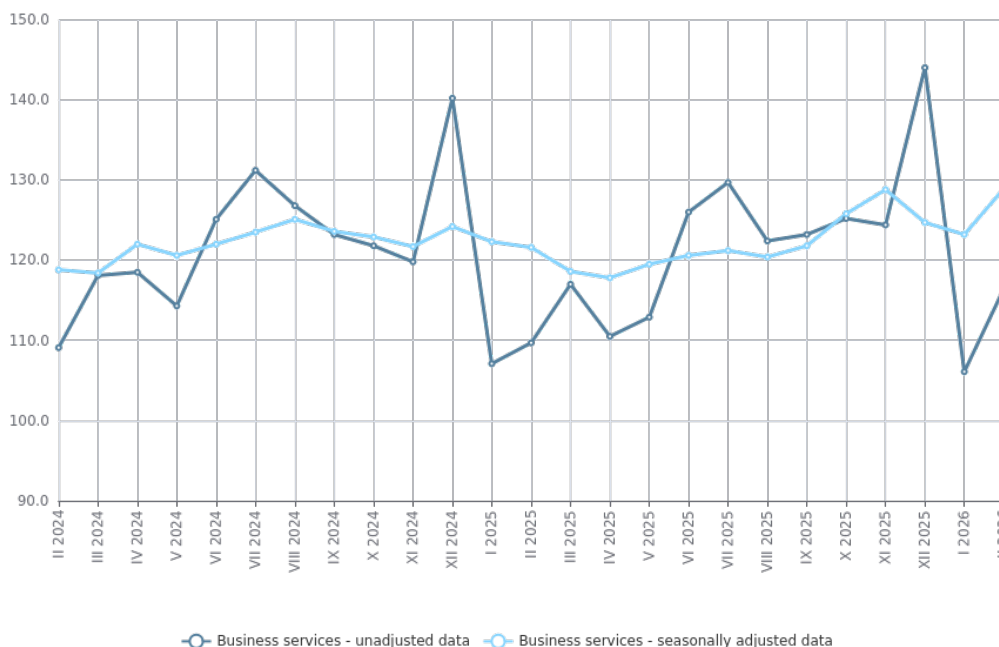


SERVICES PRODUCTION INDICES - FEBRUARY 2026

In February 2026, the total production index in **Services of the business economy**^[1] increased by 4.6% compared to the previous month. The data are preliminary and seasonally adjusted.

Compared to February 2025, a rise of 6.3% was registered in the calendar-adjusted index according to preliminary data.

Figure 1. Production indices for Business services (2021 = 100)

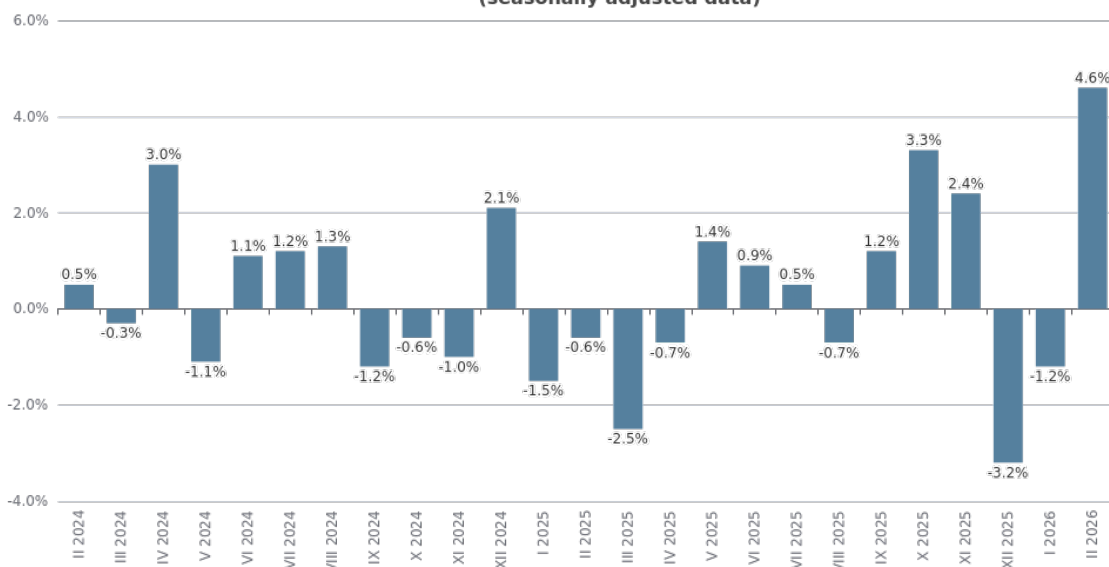


[1] Business services include the following sectors from NACE.BG - 2008: H - Transportation and storage, I - Accommodation and food service activities, J - Information and communication, L - Real estate activities, M_STS - Professional, scientific and technical activities (specific grouping under Regulation (EU) 2019/2152), and N - Administrative and support service activities.

Monthly changes

An increase compared to the previous month was reported in the following sectors: 'Information and communication' - by 7.9%, 'Real estate activities' and 'Transportation and storage' - by 4.7% each, 'Administrative and support service activities' - by 3.7%, and 'Professional, scientific and technical activities' - by 3.4%, while in the 'Accommodation and food service activities' sector no change was observed.

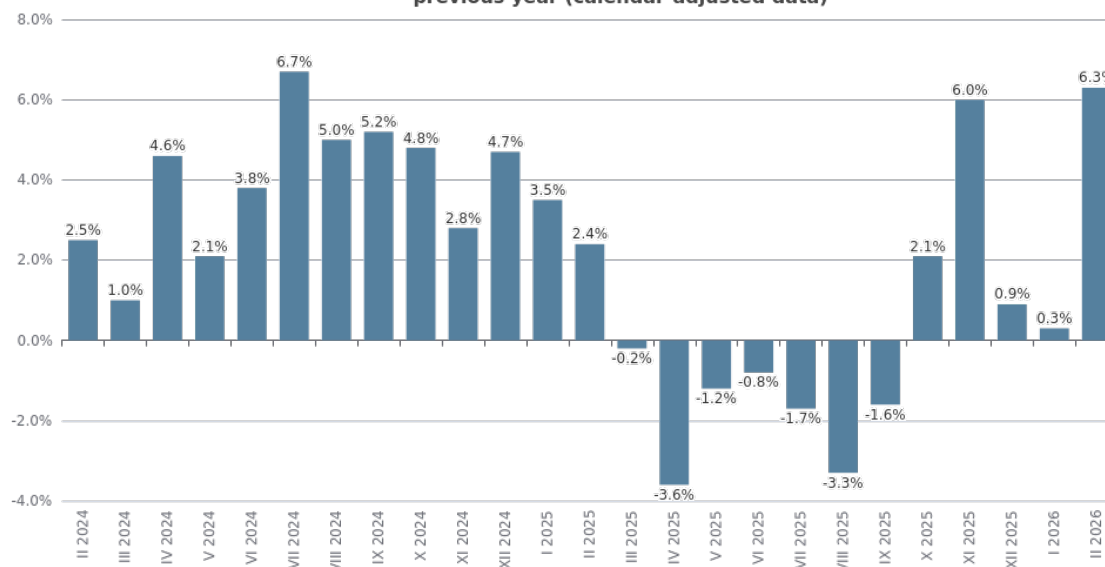
Figure 2. Changes of production indices for Business services compared to the previous month (seasonally adjusted data)



Annual changes

On an annual basis, a growth was observed in the following sectors: 'Professional, scientific and technical activities' - by 15.5%, 'Information and communication' - by 11.7%, 'Accommodation and food service activities' and 'Administrative and support service activities' - by 5.5% each, and 'Real estate activities' - by 2.7%. A decrease was registered in the sector 'Transportation and storage' - by 2.5%.

Figure 3. Changes of production indices for Business services compared to the same month of the previous year (calendar-adjusted data)



Methodological notes

Monthly indices of production in services are calculated and published two months after the reference period (M+2) in accordance with the requirements of Regulation (EU) 2019/2152 of the European Parliament and of the Council for European Business Statistics.

Production indices in services are calculated by deflating the turnover indices for each activity with the corresponding producer price indices. The purpose of the production index is to measure changes in output volume at monthly intervals. The indices are calculated with 2021 as a base year.

Seasonal adjustment is a statistical method, which eliminates the seasonal component of time series.

Calendar adjustment is an adjustment for variations caused by calendar effects, a different number of calendar and working days in the months, national holidays and outliers (for example, the presence of more non-working days in May could contribute to the decline in some activities).

Changes of production indices in services (compared to the previous month) - seasonally adjusted data							
							(Per cent)
Economic activities	NACE.BG - 2008	IX.2025	X.2025	XI.2025	XII.2025	I.2026	II.2026*
Services of the business economy (except trade and financial and insurance activities)	HTNXK	1.2	3.3	2.4	-3.2	-1.2	4.6
Transportation and storage	H	1.2	1.2	1.4	-1.2	-0.2	4.7
Land transport and transport via pipelines	H49	0.8	-0.6	1.3	1.1	-2.2	3.6
Water transport	H50	-9.9	-15.5	4.2	20.1	-2.5	9.5
Air transport	H51	-1.2	8.8	14.2	-15.2	16.6	14.7
Warehousing and support activities for transportation	H52	3.5	3.4	-0.1	-3.2	-0.8	4.5
Postal and courier activities	H53	1.6	1.3	-7.0	4.6	-1.4	-0.8
Accommodation and food service activities	I	-0.6	1.7	-0.8	2.7	0.0	0.1
Accommodation	I55	2.1	4.2	-3.1	6.6	1.2	-2.7
Food and beverage service activities	I56	-2.8	-0.1	1.6	-0.6	-0.9	3.4
Information and communication	J	-3.7	2.8	4.9	-1.9	-6.3	7.9
Publishing activities	J58	8.6	1.3	-5.4	14.4	-5.9	-3.3
Motion picture, video, television programme production; programming and broadcasting activities	J59	-28.5	20.7	-15.4	-10.7	33.3	-12.6
Programming and broadcasting activities	J60	5.1	-8.1	-9.8	15.2	13.5	-13.9
Telecommunications	J61	-2.3	2.8	14.6	-3.6	-5.3	7.8
Computer programming, consultancy and related activities	J62	-4.8	2.1	4.4	-2.9	-9.0	10.4
Information service activities	J63	0.2	6.2	-14.7	6.8	-5.0	6.5
Real estate activities	L	9.8	-0.5	-10.8	-1.4	14.8	4.7
Professional, scientific and technical activities (specific grouping under Regulation (EU) 2019/2152)	M_STS	7.1	13.4	3.8	-12.3	-0.4	3.4
Legal and accounting activities	M69	3.8	3.1	-3.0	-6.1	16.4	3.0
Management consultancy activities	M702	1.0	-1.6	-8.5	2.9	20.6	-6.0
Architectural and engineering activities; technical testing and analysis	M71	16.4	53.9	12.6	-27.4	-20.9	15.9
Advertising and market research	M73	6.7	-4.2	-7.2	4.5	10.6	2.0
Other professional, scientific and technical activities	M74	4.6	-3.7	10.6	-6.3	-5.6	-4.4
Administrative and support service activities	N	2.6	-2.9	8.1	-2.5	-1.3	3.7
Rental and leasing activities	N77	13.8	-7.1	9.3	-4.7	-5.4	12.8
Employment activities	N78	0.0	-8.6	8.5	-9.6	18.8	-2.0
Travel agency, tour operator reservation service and related activities	N79	-9.0	9.3	-1.8	-1.0	7.1	2.9
Security and investigation activities	N80	0.6	-4.2	17.5	-1.9	-6.7	7.3
Services to buildings and landscape activities	N81	-2.7	12.9	-3.7	5.5	-9.1	-3.1
Office administrative, office support and other business support activities	N82	7.5	-4.8	5.3	-0.2	-5.6	0.3
* Preliminary data.							

Table 2

Changes of production indices in services (compared to the same month of the previous year) - calendar-adjusted data							
							(Per cent)
Economic activities	NACE.BG - 2008	IX.2025	X.2025	XI.2025	XII.2025	I.2026	II.2026*
Services of the business economy (except trade and financial and insurance activities)	HTNXX	-1.6	2.1	6.0	0.9	0.3	6.3
Transportation and storage	H	3.6	2.4	4.6	0.6	-1.6	-2.5
Land transport and transport via pipelines	H49	2.1	0.7	1.6	1.0	-1.1	3.1
Water transport	H50	-5.1	-27.8	-26.6	-8.1	-4.4	16.0
Air transport	H51	15.9	7.9	65.1	0.1	41.0	65.1
Warehousing and support activities for transportation	H52	3.9	8.0	10.1	0.2	-6.6	-19.3
Postal and courier activities	H53	0.0	-4.3	-12.2	1.1	-8.3	-7.8
Accommodation and food service activities	I	-1.1	1.9	-1.1	6.1	5.6	5.5
Accommodation	I55	3.9	20.5	7.4	26.1	32.3	14.0
Food and beverage service activities	I56	-5.5	-8.3	-5.5	-5.0	-10.0	-0.8
Information and communication	J	-4.4	-0.7	8.8	2.4	-4.0	11.7
Publishing activities	J58	-4.5	-1.6	-12.3	8.8	-5.1	3.9
Motion picture, video, television programme production; programming and broadcasting activities	J59	-36.2	-32.6	-34.2	-24.1	-20.7	-14.9
Programming and broadcasting activities	J60	6.6	-19.7	-11.4	-0.3	8.7	0.1
Telecommunications	J61	-14.7	-11.8	4.2	0.5	3.0	9.3
Computer programming, consultancy and related activities	J62	2.1	7.6	15.8	5.2	-6.5	18.0
Information service activities	J63	9.7	18.6	14.1	-0.9	-13.0	-1.6
Real estate activities	L	-8.3	-2.9	-8.1	-22.1	6.3	2.7
Professional, scientific and technical activities (specific grouping under Regulation (EU) 2019/2152)	M_STS	-1.9	9.9	16.7	4.0	4.3	15.5
Legal and accounting activities	M69	-3.2	-1.6	2.4	-1.4	9.0	21.3
Management consultancy activities	M702	-31.2	-16.2	-35.2	-18.3	-6.3	-5.0
Architectural and engineering activities; technical testing and analysis	M71	17.3	62.1	89.3	32.2	-6.8	28.4
Advertising and market research	M73	15.2	1.4	-1.1	-6.3	12.0	22.6
Other professional, scientific and technical activities	M74	1.1	-7.5	-1.4	-8.4	17.0	5.7
Administrative and support service activities	N	-0.7	-0.1	-1.1	4.7	0.0	5.5
Rental and leasing activities	N77	16.8	8.6	26.6	23.0	1.9	11.4
Employment activities	N78	13.2	3.1	10.5	-13.5	14.3	9.2
Travel agency, tour operator reservation service and related activities	N79	-34.2	-9.9	-19.6	-22.8	-15.3	-7.3
Security and investigation activities	N80	-4.0	-4.7	7.3	4.4	-6.5	7.1
Services to buildings and landscape activities	N81	8.9	19.4	4.2	22.0	11.9	9.9
Office administrative, office support and other business support activities	N82	12.8	-4.6	-24.4	14.2	-0.9	-0.8
* Preliminary data.							

Table 3

Production indices in services - seasonally adjusted (2021 = 100)													
NACE.BG - 2008	II.2025	III.2025	IV.2025	V.2025	VI.2025	VII.2025	VIII.2025	IX.2025	X.2025	XI.2025	XII.2025	I.2026	II.2026*
HTNXK	121.6	118.6	117.8	119.5	120.6	121.2	120.4	121.8	125.8	128.8	124.7	123.2	128.9
H	121.1	111.8	111.9	112.3	112.1	109.5	110.5	111.9	113.2	114.8	113.4	113.2	118.6
H49	105.9	103.9	102.8	104.6	105.7	102.4	104.3	105.1	104.4	105.8	106.9	104.6	108.4
H50	130.1	133.6	140.4	142.2	154.0	159.5	147.7	133.1	112.5	117.1	140.6	137.1	150.1
H51	268.5	321.0	304.4	317.4	314.7	269.5	306.4	302.7	329.4	376.1	318.9	371.7	426.2
H52	136.8	105.8	109.8	105.0	102.6	104.2	101.0	104.5	108.1	107.9	104.4	103.6	108.3
H53	121.9	112.5	112.4	116.9	114.2	115.9	115.0	116.9	118.5	110.2	115.2	113.6	112.6
I	142.6	141.3	140.5	140.6	142.9	142.5	144.0	143.2	145.5	144.4	148.4	148.4	148.5
I55	165.9	160.7	163.3	161.9	170.9	172.2	172.3	175.9	183.2	177.5	189.2	191.5	186.3
I56	129.3	130.2	127.1	128.4	127.0	124.9	127.1	123.5	123.4	125.4	124.7	123.6	127.8
J	119.2	117.0	120.3	118.8	126.0	122.9	128.7	124.0	127.5	133.8	131.2	122.9	132.6
J58	85.2	86.0	92.1	95.5	90.5	86.4	83.0	90.1	91.3	86.3	98.7	92.9	89.9
J59	88.7	90.7	84.9	94.2	71.4	77.8	99.7	71.3	86.1	72.8	65.0	86.7	75.7
J60	76.5	59.6	84.4	77.4	78.3	71.1	77.5	81.5	74.9	67.6	77.8	88.3	76.0
J61	119.1	116.3	114.3	111.9	116.0	113.2	113.5	110.9	114.0	130.7	126.0	119.4	128.7
J62	121.6	122.6	127.3	124.7	137.8	133.7	144.4	137.5	140.5	146.6	142.4	129.6	143.0
J63	148.2	129.9	142.7	147.8	151.9	151.5	149.2	149.5	158.8	135.5	144.7	137.4	146.4
L	111.3	106.9	101.4	104.3	100.6	101.3	97.7	107.3	106.8	95.3	94.0	107.9	113.0
M_STS	117.5	118.0	116.9	126.9	121.3	126.9	119.1	127.5	144.5	150.1	131.6	131.1	135.5
M69	126.4	132.4	126.0	133.8	134.0	122.1	129.1	134.0	138.2	134.0	125.8	146.4	150.8
M702	111.6	98.2	102.1	122.4	91.3	96.8	100.4	101.4	99.8	91.3	94.0	113.3	106.4
M71	124.3	123.3	112.3	129.8	142.3	154.8	117.1	136.2	209.7	236.1	171.4	135.6	157.2
M73	108.3	111.5	122.6	116.7	120.1	127.2	118.2	126.2	120.8	112.1	117.1	129.5	132.0
M74	111.3	117.2	121.0	127.3	108.2	123.7	127.0	132.8	127.9	141.5	132.5	125.1	119.6
N	121.8	127.0	117.2	118.4	120.2	131.9	119.0	122.0	118.5	128.1	124.9	123.3	127.8
N77	114.2	116.1	104.8	103.2	105.8	100.7	107.6	122.4	113.7	124.3	118.4	112.1	126.5
N78	139.0	137.3	141.5	141.0	144.4	137.3	144.7	144.7	132.2	143.5	129.7	154.1	151.0
N79	194.6	196.5	193.8	199.9	188.6	191.6	172.0	156.5	171.1	168.0	166.3	178.1	183.3
N80	111.7	101.6	102.0	102.4	103.8	148.3	106.3	106.9	102.4	120.3	118.0	110.1	118.1
N81	113.6	107.5	109.2	121.0	127.8	132.6	128.8	125.3	141.5	136.2	143.7	130.7	126.6
N82	109.3	147.5	109.3	109.4	112.4	109.4	107.4	115.4	109.9	115.7	115.4	109.0	109.4
* Preliminary data.													

Table 4

Production indices in services - calendar-adjusted (2021 = 100)													
NACE.BG - 2008	II.2025	III.2025	IV.2025	V.2025	VI.2025	VII.2025	VIII.2025	IX.2025	X.2025	XI.2025	XII.2025	I.2026	II.2026*
HTNXK	110.3	118.1	111.3	115.2	128.0	131.2	126.2	124.3	124.6	126.0	141.9	106.4	117.3
H	110.4	113.5	109.9	112.4	118.4	121.2	111.9	113.7	118.5	113.7	110.8	95.5	107.6
H49	101.0	110.6	101.4	105.0	110.1	109.6	97.6	103.4	110.4	110.7	107.7	89.0	104.1
H50	105.4	130.9	143.7	153.6	161.3	193.3	164.5	137.3	119.8	106.0	136.8	104.0	122.2
H51	146.8	223.9	244.8	327.7	413.5	425.5	489.5	403.7	324.4	218.6	211.8	200.3	242.4
H52	124.5	107.5	112.2	104.2	105.0	112.7	101.5	105.0	113.3	108.1	101.8	94.2	100.4
H53	117.6	114.2	109.8	112.1	113.5	113.8	108.3	111.0	122.3	120.4	128.9	111.1	108.4
I	121.2	124.8	120.8	131.4	159.5	197.3	219.5	154.9	125.1	109.8	134.0	125.3	127.8
I55	139.0	125.1	127.5	132.2	202.5	277.1	311.5	204.9	142.9	110.2	154.3	156.9	158.5
I56	110.8	124.6	116.9	130.9	134.4	150.7	165.9	125.7	114.8	109.6	122.1	106.9	109.9
J	108.3	119.8	113.8	112.9	131.6	120.2	122.1	123.2	129.9	136.9	164.6	109.9	121.0
J58	68.9	73.2	80.9	86.7	96.2	104.4	79.7	110.7	96.1	87.5	115.0	81.4	71.7
J59	69.6	88.4	73.0	81.3	68.8	72.4	86.4	59.5	104.8	82.2	117.0	65.8	59.3
J60	70.6	58.0	89.1	81.9	83.0	58.5	56.2	79.2	97.2	88.8	81.6	65.4	70.7
J61	111.2	114.6	109.1	110.6	119.9	114.7	115.7	113.8	114.0	130.2	138.3	111.9	121.6
J62	108.2	130.2	119.1	115.8	146.0	127.9	133.9	134.3	143.1	149.1	192.7	113.3	127.7
J63	143.7	133.4	141.7	141.6	151.8	145.5	133.7	143.2	156.1	151.9	176.6	125.4	141.4
L	108.4	105.7	96.1	97.1	104.7	103.5	97.6	116.7	102.2	90.0	109.5	101.8	111.3
M_STS	106.1	122.8	111.6	121.5	127.3	128.8	107.5	123.3	140.7	156.3	184.1	108.3	122.5
M69	116.8	137.8	126.3	134.2	142.5	122.7	117.8	129.7	135.2	129.1	153.2	132.0	141.6
M702	104.4	104.5	98.2	112.5	92.4	96.3	92.0	109.6	96.9	86.2	124.3	99.4	99.2
M71	105.0	128.0	97.8	119.1	150.9	166.3	108.0	123.7	191.5	260.3	284.8	96.4	134.8
M73	91.4	109.6	123.9	116.8	125.1	123.9	100.8	119.6	135.0	131.3	156.0	93.5	112.1
M74	107.9	125.2	114.4	121.7	113.0	121.2	114.0	130.2	126.2	138.3	167.5	115.3	114.0
N	112.4	121.1	110.1	115.4	130.2	142.2	128.2	131.1	118.0	126.7	130.8	106.6	118.5
N77	103.5	109.6	98.1	107.0	109.0	106.3	109.4	125.5	109.5	132.3	135.0	98.8	115.3
N78	136.0	140.6	141.8	137.7	143.2	136.1	143.2	143.1	133.5	144.0	148.6	138.2	148.5
N79	125.8	139.8	141.5	172.4	273.3	309.8	308.7	236.8	167.7	85.7	105.7	101.7	116.6
N80	110.5	99.5	100.9	100.4	103.9	150.8	108.9	108.6	104.3	118.9	127.0	101.1	118.3
N81	100.4	101.7	105.2	124.8	139.4	146.5	133.6	123.1	146.7	139.0	155.9	107.3	110.3
N82	106.2	147.5	102.8	105.5	123.4	104.8	98.0	126.9	106.3	130.7	120.5	100.7	105.4
* Preliminary data.													