

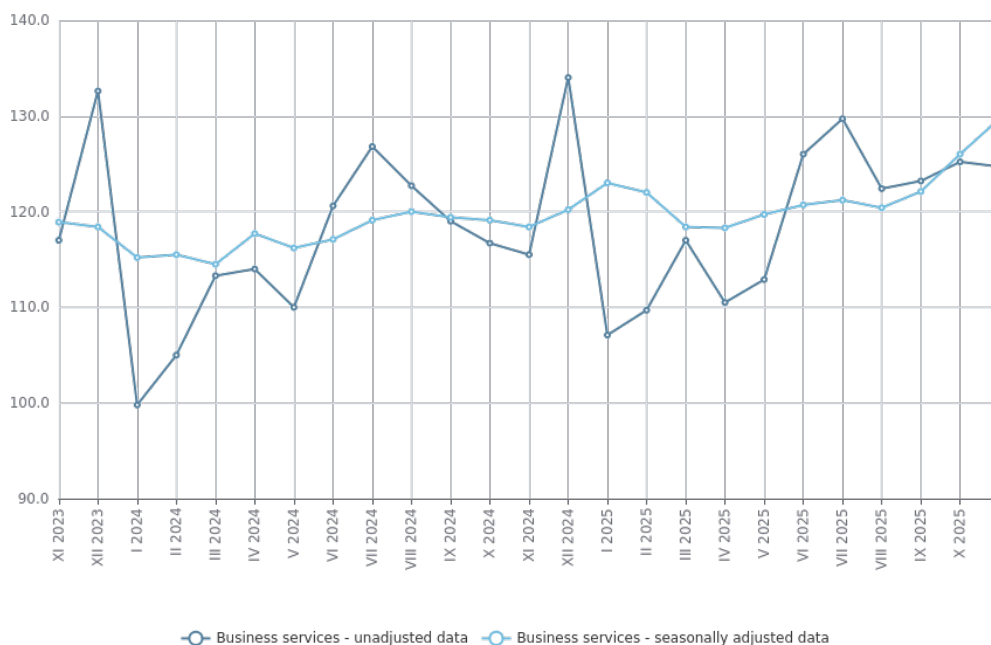


SERVICES PRODUCTION INDICES - NOVEMBER 2025

In November 2025, the total production index in **Services of the business economy**^[1] increased by 2.9% compared to the previous month. The data are preliminary and seasonally adjusted.

Compared to November 2024, a rise of 9.8% was registered in the calendar-adjusted index according to preliminary data.

Figure 1. Production indices for Business services (2021 = 100)

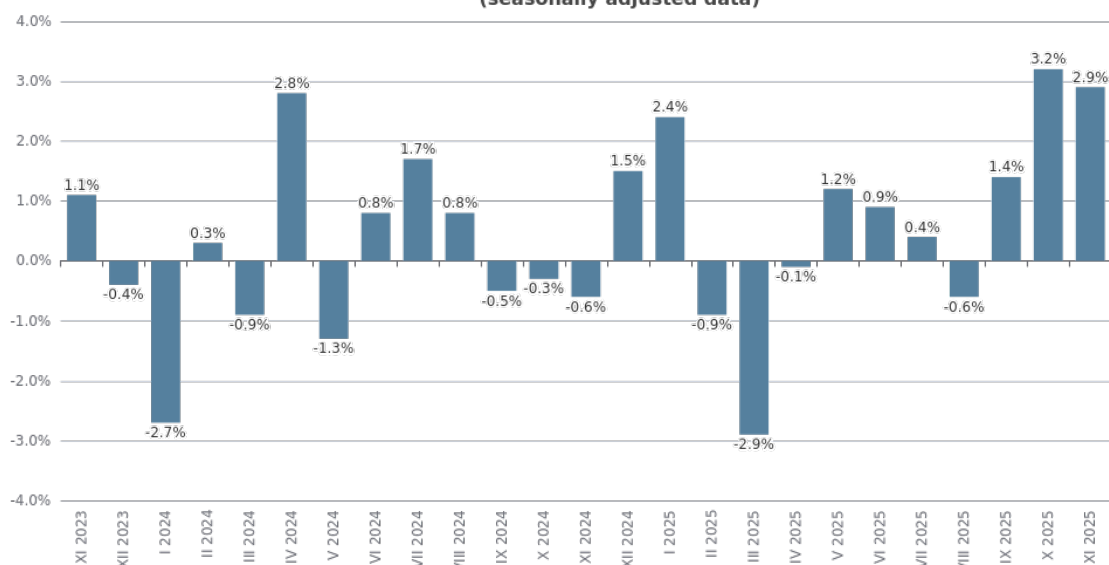


^[1] Business services include the following sectors from NACE.BG - 2008: H - Transportation and storage, I - Accommodation and food service activities, J - Information and communication, L - Real estate activities, M_ST5 - Professional, scientific and technical activities (specific grouping under Regulation (EU) 2019/2152), and N - Administrative and support service activities.

Monthly changes

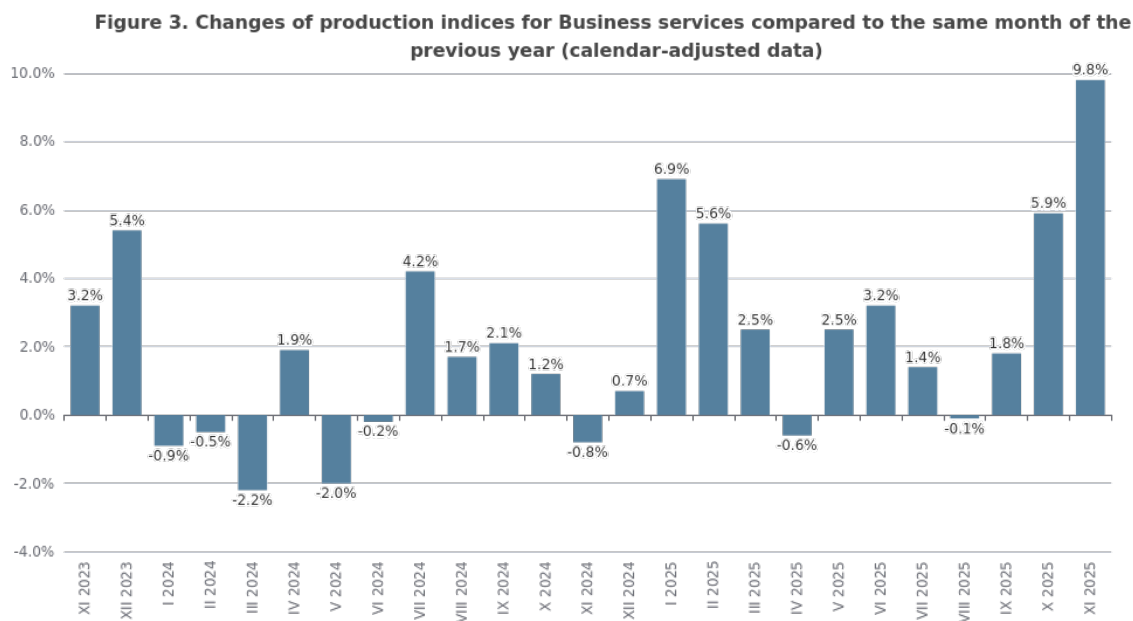
Compared to the previous month, an increase was reported in the following sectors: 'Administrative and support service activities' - by 9.0%, 'Professional, scientific and technical activities' - by 6.2%, 'Information and communication' - by 4.7%, and 'Transportation and storage' - by 1.7%. A decrease was seen in the sectors: 'Real estate activities' - by 9.8%, and 'Accommodation and food service activities' - by 1.2%.

Figure 2. Changes of production indices for Business services compared to the previous month (seasonally adjusted data)



Annual changes

On an annual basis, a growth was observed in the following sectors: 'Professional, scientific and technical activities' - by 21.2%, 'Information and communication' - by 14.7%, 'Real estate activities' - by 6.0%, 'Administrative and support service activities' - by 5.4%, and 'Transportation and storage' - by 3.4%. A decrease was registered only in the sector 'Accommodation and food service activities' - by 0.6%.



Methodological notes

Monthly indices of production in services are calculated and published two months after the reference period (M+2) in accordance with the requirements of Regulation (EU) 2019/2152 of the European Parliament and of the Council for European Business Statistics.

Production indices in services are calculated by deflating the turnover indices for each activity with the corresponding producer price indices. The purpose of the production index is to measure changes in output volume at monthly intervals. The indices are calculated with 2021 as a base year.

Seasonal adjustment is a statistical method, which eliminates the seasonal component of time series.

Calendar adjustment is an adjustment for variations caused by calendar effects, a different number of calendar and working days in the months, national holidays and outliers (for example, the presence of more non-working days in May could contribute to the decline in some activities).

Table 1

Changes of production indices in services (compared to the previous month) - seasonally adjusted data							
							(Per cent)
Economic activities	NACE.BG - 2008	VI.2025	VII.2025	VIII.2025	IX.2025	X.2025	XI.2025*
Services of the business economy (except trade and financial and insurance activities)	HTNXK	0.9	0.4	-0.6	1.4	3.2	2.9
Transportation and storage	H	-0.3	-2.6	1.1	1.4	1.4	1.7
Land transport and transport via pipelines	H49	1.2	-3.2	1.8	0.7	-0.6	1.5
Water transport	H50	8.6	3.0	-7.6	-10.0	-14.8	4.2
Air transport	H51	-3.7	-13.6	13.2	0.2	10.8	15.0
Warehousing and support activities for transportation	H52	-2.3	0.7	-2.5	3.8	3.6	0.3
Postal and courier activities	H53	-2.1	1.7	-0.3	1.4	1.5	-7.5
Accommodation and food service activities	I	2.2	-0.3	0.4	-0.8	1.1	-1.2
Accommodation	I55	5.8	0.5	0.1	2.5	1.1	-3.8
Food and beverage service activities	I56	-2.5	1.8	-3.5	-1.1	1.7	1.5
Information and communication	J	5.6	-1.9	4.6	-3.7	2.9	4.7
Publishing activities	J58	-5.3	-5.0	-4.7	9.5	1.1	-4.7
Motion picture, video, television programme production; programming and broadcasting activities	J59	-24.5	15.1	28.4	-31.7	25.4	-22.9
Programming and broadcasting activities	J60	0.7	-5.2	8.3	0.8	-5.6	-0.2
Telecommunications	J61	3.3	-2.4	-0.2	-2.4	2.6	14.4
Computer programming, consultancy and related activities	J62	10.1	-2.3	7.9	-4.6	2.5	4.4
Information service activities	J63	1.9	0.7	-0.9	0.6	4.7	-15.6
Real estate activities	L	-3.2	0.6	-2.9	10.0	-0.4	-9.8
Professional, scientific and technical activities (specific grouping under Regulation (EU) 2019/2152)	M_STS	-4.6	4.4	-5.5	7.5	12.1	6.2
Legal and accounting activities	M69	-1.4	-8.9	9.4	3.6	2.0	-3.3
Management consultancy activities	M702	-25.3	5.8	3.7	0.5	-2.1	-8.6
Architectural and engineering activities; technical testing and analysis	M71	10.0	8.2	-24.6	19.0	49.7	19.5
Advertising and market research	M73	3.1	5.9	-7.0	6.6	-4.4	-5.9
Other professional, scientific and technical activities	M74	-14.9	14.2	2.6	4.3	-3.5	9.6
Administrative and support service activities	N	1.5	8.6	-9.9	3.6	-1.7	9.0
Rental and leasing activities	N77	1.8	-3.5	4.6	15.4	-7.8	13.4
Employment activities	N78	1.1	-4.2	5.7	-0.2	-8.3	8.3
Travel agency, tour operator reservation service and related activities	N79	-4.8	-8.7	-11.0	-1.0	19.8	-3.7
Security and investigation activities	N80	1.2	43.3	-28.5	0.0	-4.0	20.1
Services to buildings and landscape activities	N81	8.2	4.0	-5.0	-2.9	15.1	-3.7
Office administrative, office support and other business support activities	N82	3.2	-5.1	0.8	8.0	-4.3	4.8
* Preliminary data.							

Table 2

Changes of production indices in services (compared to the same month of the previous year) - calendar-adjusted data							
							(Per cent)
Economic activities	NACE.BG - 2008	VI.2025	VII.2025	VIII.2025	IX.2025	X.2025	XI.2025*
Services of the business economy (except trade and financial and insurance activities)	HTNXK	3.2	1.4	-0.1	1.8	5.9	9.8
Transportation and storage	H	2.4	-4.0	0.7	2.1	-0.3	3.4
Land transport and transport via pipelines	H49	0.6	-5.0	-1.0	1.5	-2.3	1.2
Water transport	H50	18.8	26.1	8.9	6.1	-11.2	-9.1
Air transport	H51	26.5	0.3	31.0	15.2	7.5	65.7
Warehousing and support activities for transportation	H52	0.0	-3.4	-4.9	0.7	4.9	7.6
Postal and courier activities	H53	-6.1	-10.7	-9.1	-6.4	-9.0	-17.9
Accommodation and food service activities	I	-0.1	-0.6	0.9	-0.7	3.2	-0.6
Accommodation	I55	2.3	2.1	1.6	3.9	20.5	7.4
Food and beverage service activities	I56	-2.6	-3.9	-0.4	-4.0	-8.3	-5.5
Information and communication	J	9.6	2.4	7.7	1.6	6.4	14.7
Publishing activities	J58	2.6	-22.7	-46.8	4.8	7.9	-2.9
Motion picture, video, television programme production; programming and broadcasting activities	J59	-44.1	-26.5	22.5	-36.1	-15.0	-36.4
Programming and broadcasting activities	J60	5.0	-9.4	0.4	11.6	-7.3	-1.1
Telecommunications	J61	-3.9	-7.6	-6.3	-12.6	-9.7	5.4
Computer programming, consultancy and related activities	J62	19.3	10.7	20.4	10.8	16.0	24.1
Information service activities	J63	41.5	25.0	31.0	23.1	35.6	31.1
Real estate activities	L	-4.2	6.9	-0.1	4.9	11.8	6.0
Professional, scientific and technical activities (specific grouping under Regulation (EU) 2019/2152)	M_STS	1.5	1.7	-14.5	0.8	14.5	21.2
Legal and accounting activities	M69	13.4	-4.1	-3.4	5.8	8.8	13.5
Management consultancy activities	M702	-40.4	-46.2	-53.5	-44.0	-33.3	-48.5
Architectural and engineering activities; technical testing and analysis	M71	40.0	52.6	-1.3	26.9	74.6	104.8
Advertising and market research	M73	-2.9	11.3	2.0	13.9	0.2	-1.0
Other professional, scientific and technical activities	M74	-4.7	7.3	5.1	27.3	16.1	23.1
Administrative and support service activities	N	1.6	12.4	0.7	4.0	5.7	5.4
Rental and leasing activities	N77	-16.6	-24.0	-11.1	3.2	-2.9	14.6
Employment activities	N78	18.8	23.3	28.9	25.1	13.5	20.9
Travel agency, tour operator reservation service and related activities	N79	-9.4	-5.0	-16.7	-26.7	0.2	-9.7
Security and investigation activities	N80	5.1	52.5	3.2	4.6	5.5	22.6
Services to buildings and landscape activities	N81	19.7	33.3	29.2	19.6	38.4	23.3
Office administrative, office support and other business support activities	N82	3.6	-1.0	-2.2	13.7	-1.8	-21.9
* Preliminary data.							

Table 3

Production indices in services - seasonally adjusted (2021 = 100)													
NACE.BG - 2008	XI.2024	XII.2024	I.2025	II.2025	III.2025	IV.2025	V.2025	VI.2025	VII.2025	VIII.2025	IX.2025	X.2025	XI.2025*
HTNXK	118.4	120.2	123.0	122.0	118.4	118.3	119.7	120.7	121.2	120.4	122.1	126.0	129.7
H	109.9	114.9	115.0	120.7	110.9	111.9	112.3	112.0	109.1	110.3	111.9	113.5	115.5
H49	104.4	107.4	106.8	104.7	101.6	102.2	104.4	105.6	102.3	104.1	104.8	104.3	105.8
H50	127.9	137.1	142.5	129.7	133.6	140.6	142.8	155.1	159.7	147.6	132.9	113.2	118.0
H51	240.3	313.3	259.1	274.7	324.3	308.4	321.7	309.9	267.6	303.0	303.6	336.3	386.8
H52	102.1	107.1	113.6	137.0	107.0	110.6	105.1	102.7	103.5	100.9	104.7	108.5	108.9
H53	132.8	124.2	125.1	122.2	112.6	112.3	116.8	114.4	116.3	116.0	117.5	119.2	110.3
I	144.4	144.0	145.4	144.7	142.2	141.0	141.5	144.5	144.1	144.6	143.5	145.0	143.3
I55	178.6	179.4	182.0	183.2	176.9	176.7	179.0	189.4	190.3	190.6	195.4	197.5	190.0
I56	124.2	123.2	120.9	121.8	120.1	117.8	118.4	115.5	117.5	113.4	112.2	114.1	115.8
J	116.6	121.1	126.3	119.6	117.3	119.9	118.9	125.6	123.3	129.0	124.2	127.8	133.9
J58	89.0	84.8	98.5	86.4	87.2	92.6	96.0	91.0	86.4	82.4	90.2	91.2	86.9
J59	107.0	82.2	111.5	87.3	90.0	84.4	93.5	70.6	81.3	104.3	71.2	89.3	68.8
J60	73.5	78.7	85.7	77.4	63.7	78.0	76.0	76.5	72.5	78.5	79.2	74.8	74.6
J61	123.4	122.4	115.5	120.7	118.0	115.1	112.6	116.4	113.5	113.3	110.6	113.5	129.9
J62	120.3	126.1	134.5	120.9	121.9	126.3	124.4	136.9	133.8	144.3	137.7	141.1	147.3
J63	92.7	130.9	157.1	149.6	129.6	143.8	149.5	152.4	153.5	152.1	153.0	160.1	135.1
L	88.9	102.2	102.7	110.1	106.2	101.5	103.9	100.5	101.2	98.2	108.1	107.7	97.1
M_STS	128.8	122.6	125.6	118.3	117.0	120.2	127.4	121.5	126.9	119.9	128.8	144.5	153.4
M69	119.0	114.4	137.3	127.4	130.4	125.1	134.4	132.5	120.7	132.0	136.7	139.4	134.8
M702	174.8	144.1	127.5	118.4	107.2	109.2	123.0	91.8	97.2	100.7	101.2	99.1	90.6
M71	126.4	120.3	135.4	121.3	115.0	120.7	131.0	144.1	155.9	117.6	139.8	209.3	250.0
M73	114.1	126.0	116.0	108.1	111.4	122.6	116.7	120.2	127.4	118.4	126.3	120.8	113.6
M74	114.3	113.6	106.3	112.0	117.4	121.6	127.0	108.1	123.4	126.7	132.1	127.4	139.7
N	125.3	117.0	123.9	122.7	127.5	117.1	118.0	119.8	130.1	117.3	121.5	119.4	130.1
N77	114.2	113.4	119.4	117.4	117.1	101.9	103.3	105.1	101.5	106.2	122.5	112.9	128.0
N78	119.1	134.9	136.8	138.6	134.9	141.9	141.5	143.0	137.0	144.8	144.6	132.6	143.5
N79	194.7	197.3	204.8	203.9	202.8	202.5	197.1	187.6	171.3	152.5	151.0	180.9	174.1
N80	100.4	99.9	117.5	113.0	103.3	103.2	102.5	103.7	148.6	106.3	106.3	102.1	122.6
N81	112.7	110.7	112.1	110.2	104.9	107.3	120.4	130.3	135.5	128.7	125.0	143.8	138.5
N82	153.4	107.4	105.6	107.8	147.3	106.9	108.4	111.9	106.2	107.0	115.5	110.5	115.9
* Preliminary data.													

Table 4

Production indices in services - calendar-adjusted (2021 = 100)													
NACE.BG - 2008	XI.2024	XII.2024	I.2025	II.2025	III.2025	IV.2025	V.2025	VI.2025	VII.2025	VIII.2025	IX.2025	X.2025	XI.2025*
HTNXK	114.9	134.4	106.1	110.2	117.1	111.5	114.9	128.2	131.6	126.7	124.6	124.5	126.3
H	110.2	110.4	97.6	109.9	111.4	110.0	111.9	118.4	121.2	111.8	113.7	118.4	113.9
H49	109.5	104.7	91.0	100.1	107.1	101.7	104.2	110.0	109.7	97.5	103.4	110.3	110.8
H50	116.6	133.2	108.8	105.4	130.9	143.7	153.6	161.3	193.3	164.5	137.3	119.8	106.0
H51	131.9	212.9	142.0	146.8	223.9	244.8	327.7	413.5	425.5	489.5	403.7	324.4	218.6
H52	100.9	104.9	100.9	124.5	107.7	112.1	104.2	105.0	112.7	101.5	105.0	113.3	108.6
H53	146.7	136.3	121.2	117.6	114.2	109.8	112.1	113.5	113.8	108.3	111.0	122.3	120.5
I	109.5	124.9	117.6	121.4	123.7	120.2	130.3	161.1	201.2	224.1	157.0	125.2	108.8
I55	114.2	136.3	132.0	154.8	139.2	142.0	147.2	225.5	308.5	346.9	228.1	159.1	122.7
I56	106.7	118.2	109.2	102.5	114.6	107.4	120.4	123.6	138.6	152.0	117.5	105.5	100.8
J	119.7	150.8	114.5	108.3	119.8	113.8	112.9	131.6	120.2	122.2	123.3	129.8	137.3
J58	91.0	96.4	85.8	68.9	73.2	80.9	86.7	96.2	104.4	79.7	110.7	96.1	88.4
J59	122.8	153.7	83.0	69.6	88.3	73.0	81.3	68.8	72.6	85.9	59.5	104.8	78.1
J60	100.5	82.5	60.1	70.6	58.0	89.1	81.9	83.0	58.5	60.3	83.7	88.8	99.4
J61	123.8	134.4	108.6	111.2	114.6	109.1	110.6	119.9	114.7	115.7	113.8	114.0	130.6
J62	120.2	168.8	121.2	108.2	130.2	119.1	115.8	146.1	127.9	133.8	134.3	143.3	149.2
J63	115.6	158.7	144.1	143.7	133.4	141.7	141.6	151.8	145.5	133.7	143.2	156.1	151.6
L	85.5	123.4	95.8	108.4	105.7	96.1	97.1	104.7	103.5	97.6	116.7	102.2	90.6
M_STS	129.4	168.8	103.8	106.0	121.1	113.1	121.4	127.3	128.7	107.7	123.3	140.6	156.9
M69	114.3	142.7	120.7	116.8	138.7	126.3	134.2	142.7	122.4	118.4	129.7	134.8	129.7
M702	167.4	187.1	106.1	104.4	104.5	98.2	112.5	92.4	96.3	92.0	109.6	96.9	86.2
M71	127.5	199.2	103.5	104.6	121.0	103.7	118.8	150.7	165.8	108.4	123.7	191.4	261.1
M73	134.7	168.4	83.5	91.4	109.6	123.9	116.8	125.1	123.9	100.8	119.6	135.0	133.4
M74	111.9	145.1	98.7	107.9	124.8	114.5	121.6	113.0	121.4	113.8	130.2	126.5	137.7
N	121.1	118.4	106.3	112.8	120.9	110.4	115.4	130.1	142.3	127.9	131.1	118.0	127.7
N77	115.3	123.3	97.6	103.5	109.4	98.3	106.3	108.5	107.3	108.1	125.5	109.8	132.1
N78	119.1	155.4	121.0	136.0	137.6	141.8	137.7	143.2	136.1	143.2	143.1	133.5	144.0
N79	95.8	123.0	120.1	125.8	139.8	141.5	172.4	273.3	309.8	308.7	236.8	167.7	86.5
N80	99.6	107.6	106.9	111.8	100.2	101.5	101.0	103.9	150.8	108.9	108.6	104.3	122.1
N81	112.7	116.3	95.9	100.4	101.7	105.2	124.8	139.4	146.5	133.6	123.1	146.7	139.0
N82	167.5	104.8	101.7	106.2	147.5	102.8	105.5	123.4	104.8	98.0	126.9	106.3	130.8
* Preliminary data.													