

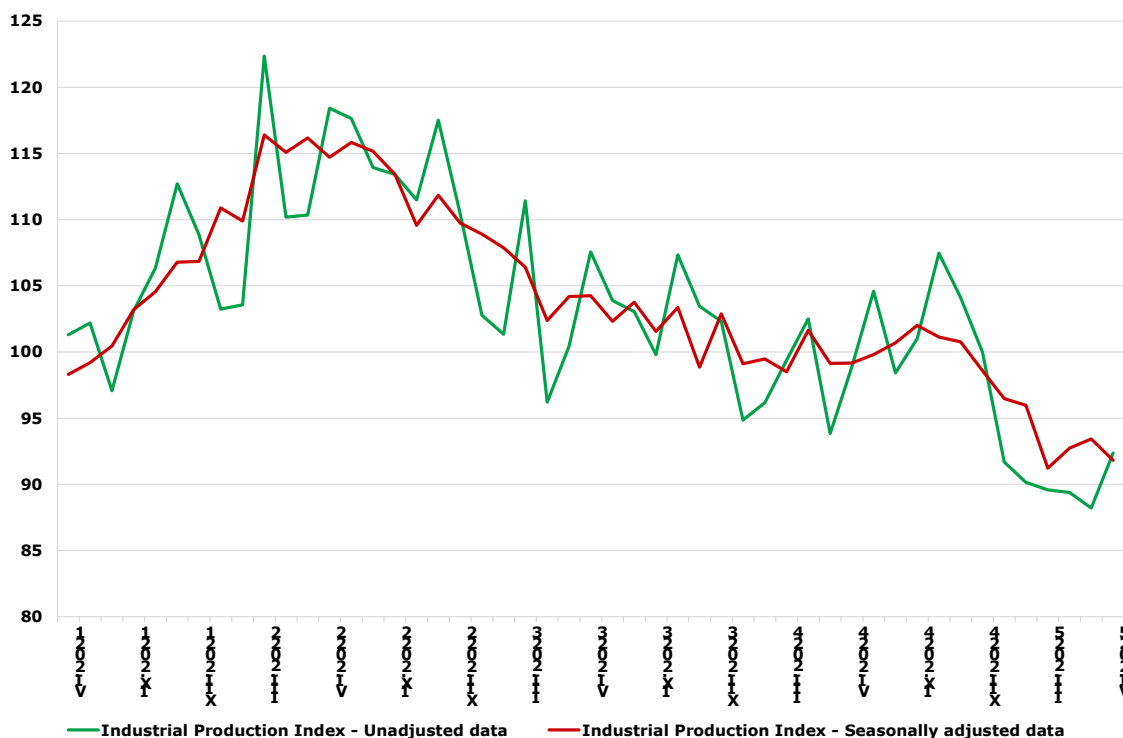


INDUSTRIAL PRODUCTION INDICES IN JUNE 2025

The Industrial Production Index decreased by 1.7% in June 2025 compared to the previous month. The data are preliminary and seasonally adjusted.

In comparison with June 2024, a decline of 8.2% was registered in the calendar-adjusted Industrial Production Index.

Figure 1. Industrial Production Indices (2021 = 100)



Monthly changes

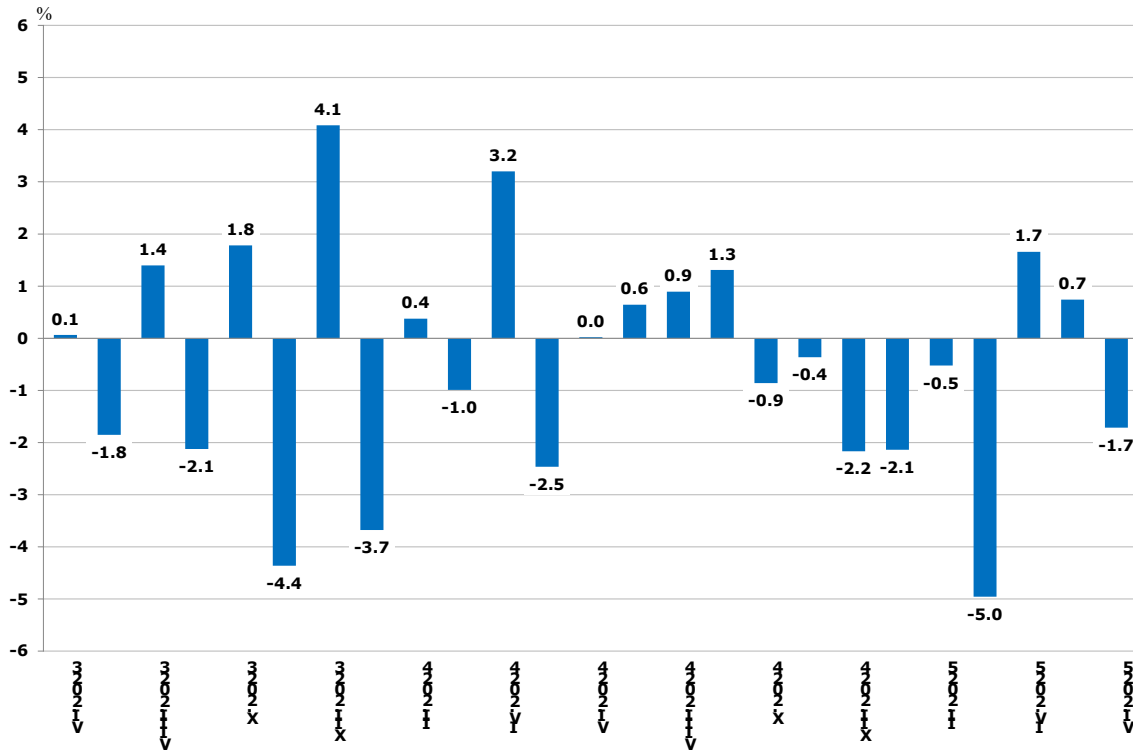
In June 2025, compared to the previous month, a decrease was seen in the electricity, gas, steam and air conditioning supply - by 5.2%, and in the manufacturing - by 2.4%, while a rise was registered in the mining and quarrying industry - by 16.9%.

More significant decline in the manufacturing was reported in the manufacture of fabricated metal products, except machinery and equipment - by 17.4%, in the other manufacturing - by 13.7%, and in the manufacture of other transport equipment - by 10.1%.

A rise was seen in the manufacture of basic pharmaceutical products and pharmaceutical preparations - by 14.8%, and in the repair and installation of machinery and equipment - by 13.9%.

INDUSTRIAL PRODUCTION INDICES IN JUNE 2025

**Figure 2. Changes of Industrial Production Indices
compared to the previous month
(Seasonally adjusted)**



Annual changes

On an annual basis, a drop of the Industrial Production Index was observed in the electricity, gas, steam and air conditioning supply - by 17.6%, and in the manufacturing - by 7.1%, while an increase was registered in the mining and quarrying industry - by 27.5%.

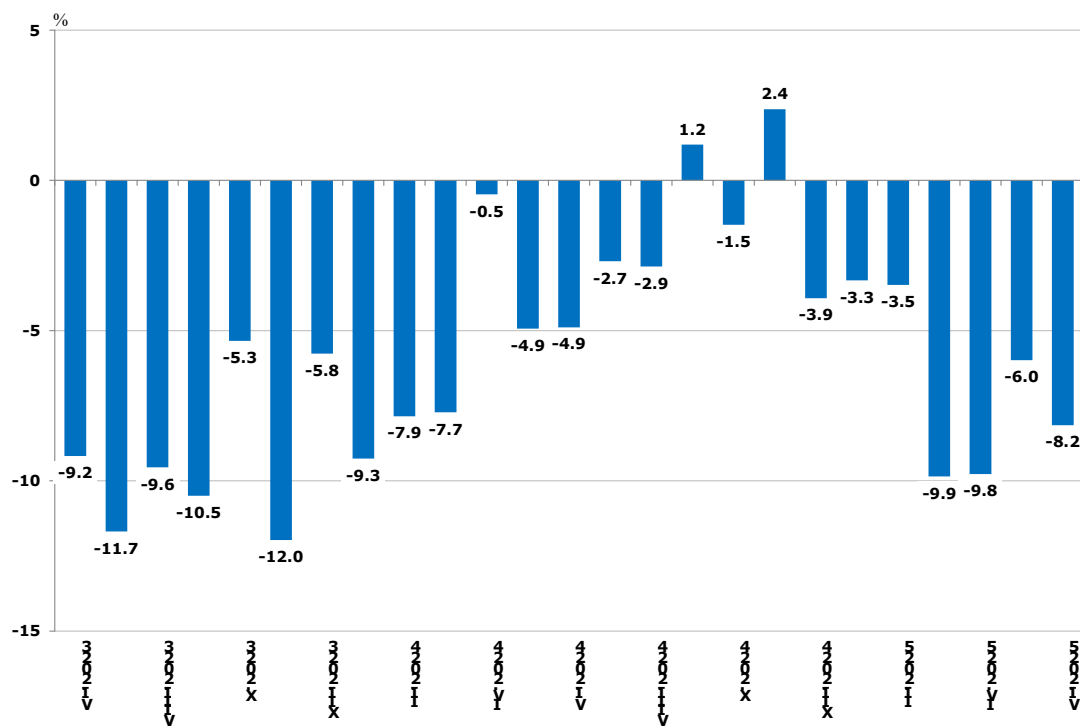
In the manufacturing, a significant decline in production, compared to the same month of the previous year, was seen in the manufacture of basic metals - by 41.8%, in the manufacture of textiles - by 27.7%, and in the manufacture of paper and paper products - by 22.3%.

A rise was reported in the manufacture of tobacco products - by 67.0%, in the manufacture of basic pharmaceutical products and pharmaceutical preparations - by 14.9%, and in the manufacture of other non-metallic mineral products - by 13.9%.

INDUSTRIAL PRODUCTION INDICES

IN JUNE 2025

Figure 3. Changes of the Industrial Production Indices compared to the same month of the previous year (Calendar-adjusted)



INDUSTRIAL PRODUCTION INDICES

IN JUNE 2025

Methodological notes

The monthly indices of industrial production are calculated in accordance with the requirements of Regulation (EU) 2019/2152 of the European Parliament and of the Council on European Business Statistics.

The Monthly Industrial Production and Industrial Turnover Indices measure changes in production and turnover values of industrial enterprises. This information can be used to access the current economic development and for short-term forecasts. Indices do not measure the actual production level; they aim to measure the average change in the value of production between two points in time. Indices are compiled based on information collected through a representative sampling survey on industrial enterprises. The sample covers enterprises with an annual turnover of more than 97% of the total turnover in the industry.

The Industrial Production Indices are calculated at a constant base year, that is to say they are weighted with the structure of the value added at factor costs in the base year.

Seasonal adjustment is a statistical method which eliminates the seasonal component of the time series.

Calendar adjustment is an adjustment for variations in the monthly data, caused by calendar effects, the different number of calendar and working days in the months, national holidays and outliers (for example, the presence of more non-working days in May could contribute to the decline in production in some activities).

Since July 2024, all dynamic rows have been recalculated based on 2021 as base year and have been published in IS Infostat.

INDUSTRIAL PRODUCTION INDICES

IN JUNE 2025

Annex

Table 1

Changes of Industrial Production Indices compared to the previous month¹

(Per cent)

Economic activities	NACE.BG - 2008	2025					
		I	II	III	IV	V	VI*
Industry	B_TO_E36	-2.1	-0.5	-5.0	1.7	0.7	-1.7
Mining and quarrying	B	-19.3	-6.2	5.6	-1.4	0.9	16.9
Mining of coal and lignite	B05	-56.3	8.7	-37.4	15.6	-4.9	28.7
Extraction of crude petroleum and natural gas	B06
Mining of metal ores	B07	-9.9	-2.6	1.4	-3.5	-4.0	24.4
Other mining and quarrying	B08	8.3	-21.5	8.9	6.0	-1.8	-4.6
Mining support service activities	B09
Manufacturing	C	-1.8	-1.4	-0.4	-1.8	2.0	-2.4
Manufacture of food products	C10	-3.9	-7.4	0.9	1.7	0.7	1.4
Manufacture of beverages	C11	-0.5	-2.2	-4.9	1.7	-1.4	-0.4
Manufacture of tobacco products	C12	14.4	6.7	-1.2	27.4	-12.1	-3.1
Manufacture of textiles	C13	-6.5	2.6	-1.0	1.9	-5.0	-6.7
Manufacture of wearing apparel	C14	0.6	-1.0	-4.7	4.0	-5.7	8.0
Manufacture of leather and related products	C15	2.2	-4.2	-1.9	14.0	-3.9	-6.7
Manufacture of wood and of products of wood and cork, except furniture; manufacture of articles of straw and plaiting materials	C16	-2.2	-3.6	-2.4	-2.6	-4.5	-0.3
Manufacture of paper and paper products	C17	-9.8	3.2	-1.9	-0.9	-3.3	0.6
Printing and reproduction of recorded media	C18	-0.5	-3.2	6.2	-3.1	1.4	1.8
Manufacture of coke and refined petroleum products	C19
Manufacture of chemicals and chemical products	C20	-4.4	-3.5	-0.5	-2.0	7.5	-6.0
Manufacture of basic pharmaceutical products and pharmaceutical preparations	C21	-2.9	-8.8	6.7	-5.1	2.4	14.8
Manufacture of rubber and plastic products	C22	-4.5	-0.9	1.1	0.7	-3.0	1.3
Manufacture of other non-metallic mineral products	C23	1.3	-12.8	4.1	-7.6	11.7	-3.1
Manufacture of basic metals	C24	0.8	3.2	0.6	-3.4	0.6	-4.5
Manufacture of fabricated metal products, except machinery and equipment	C25	14.6	-16.8	12.9	-6.6	1.4	-17.4
Manufacture of computer, electronic and optical products	C26	-15.3	17.0	12.4	-17.6	2.9	6.3
Manufacture of electrical equipment	C27	2.0	-2.5	2.9	9.8	-6.3	-2.8
Manufacture of machinery and equipment n.e.c.	C28	0.3	5.2	2.5	-7.2	1.4	-2.1
Manufacture of motor vehicles, trailers and semi-trailers	C29	17.9	-1.1	3.8	-1.0	5.0	-5.8
Manufacture of other transport equipment	C30	-1.3	18.6	-32.5	26.5	-7.0	-10.1
Manufacture of furniture	C31	-0.8	12.4	7.9	-7.8	4.3	-7.8
Other manufacturing	C32	-17.0	20.0	-15.0	16.2	-0.5	-13.7
Repair and installation of machinery and equipment	C33	11.9	-15.2	-3.8	5.2	-8.6	13.9
Electricity, gas, steam and air conditioning supply	D	20.6	10.7	-43.0	53.9	-8.0	-5.2
Electricity, gas, steam and air conditioning supply	D35	20.6	10.7	-43.0	53.9	-8.0	-5.2

¹ Seasonally adjusted.

* Preliminary data.

„..“ - Confidential data.

INDUSTRIAL PRODUCTION INDICES
IN JUNE 2025

Table 2

**Changes of Industrial Production Indices compared to the same month
of the previous year²**

(Per cent)

Economic activities	NACE.BG - 2008	2025					
		I	II	III	IV	V	VI*
Industry	B_TO_E36	-3.3	-3.5	-9.9	-9.8	-6.0	-8.2
Mining and quarrying	B	-4.5	-1.6	2.7	-3.7	8.5	27.5
Mining of coal and lignite	B05	-18.7	22.4	-52.0	-62.8	-54.8	-35.2
Extraction of crude petroleum and natural gas	B06
Mining of metal ores	B07	-16.8	-14.8	-2.3	-17.5	-5.5	16.9
Other mining and quarrying	B08	-1.5	-38.3	-25.7	-21.3	-14.3	-17.0
Mining support service activities	B09
Manufacturing	C	-0.3	-5.6	-4.4	-7.3	-1.3	-7.1
Manufacture of food products	C10	-10.6	-16.7	-15.1	-14.6	-7.1	-9.5
Manufacture of beverages	C11	-7.7	-10.4	-10.4	-15.3	-6.6	-11.4
Manufacture of tobacco products	C12	61.0	44.5	20.5	49.1	47.7	67.0
Manufacture of textiles	C13	-17.7	-19.3	-14.2	-10.8	-18.5	-27.7
Manufacture of wearing apparel	C14	-17.5	-16.2	-19.3	-11.8	-20.0	-13.1
Manufacture of leather and related products	C15	-3.3	-13.7	-8.7	4.4	-0.1	-4.3
Manufacture of wood and of products of wood and cork, except furniture; manufacture of articles of straw and plaiting materials	C16	-6.9	-15.4	-12.7	-9.8	-12.0	-12.2
Manufacture of paper and paper products	C17	-21.6	-19.5	-17.2	-23.8	-23.9	-22.3
Printing and reproduction of recorded media	C18	-6.9	-8.2	-1.1	-5.4	-1.5	-4.4
Manufacture of coke and refined petroleum products	C19
Manufacture of chemicals and chemical products	C20	-0.1	-6.0	-6.2	-15.3	-9.1	-21.1
Manufacture of basic pharmaceutical products and pharmaceutical preparations	C21	4.2	-17.3	-10.1	-8.3	-7.5	14.9
Manufacture of rubber and plastic products	C22	0.3	-0.1	-1.6	-3.1	-4.2	-4.3
Manufacture of other non-metallic mineral products	C23	32.0	-2.2	10.7	-3.8	24.0	13.9
Manufacture of basic metals	C24	-34.1	-36.0	-34.5	-38.7	-36.7	-41.8
Manufacture of fabricated metal products, except machinery and equipment	C25	27.4	5.6	25.2	8.1	17.3	-6.9
Manufacture of computer, electronic and optical products	C26	-15.7	-14.3	24.7	-1.0	7.0	7.1
Manufacture of electrical equipment	C27	1.2	-11.7	-4.5	20.4	11.5	0.8
Manufacture of machinery and equipment n.e.c.	C28	8.2	6.7	11.8	5.1	10.4	7.1
Manufacture of motor vehicles, trailers and semi-trailers	C29	-9.1	-6.5	5.4	-8.1	7.8	8.3
Manufacture of other transport equipment	C30	33.3	54.6	-27.8	6.1	-1.7	-12.5
Manufacture of furniture	C31	-2.8	11.8	18.3	12.5	18.5	11.7
Other manufacturing	C32	-20.7	8.5	-6.6	10.6	12.8	-6.9
Repair and installation of machinery and equipment	C33	9.4	-3.9	-0.9	-13.6	-14.0	0.2
Electricity, gas, steam and air conditioning supply	D	-13.6	11.2	-34.5	-12.0	-26.6	-17.6
Electricity, gas, steam and air conditioning supply	D35	-13.6	11.2	-34.5	-12.0	-26.6	-17.6

² Calendar-adjusted.

* Preliminary data.

„..“ - Confidential data.

INDUSTRIAL PRODUCTION INDICES

IN JUNE 2025

Table 3

Industrial Production Indices (Seasonally adjusted, 2021 = 100)

NACE.BG - 2008	2024							2025						
	VI	VII	VIII	IX	X	XI	XII	I	II	III	IV	V	VI*	
B_TO_E36	99.2	99.8	100.7	102.0	101.1	100.8	98.6	96.5	96.0	91.2	92.7	93.4	91.8	
B	77.2	83.8	102.4	112.0	85.9	87.2	105.4	85.1	79.8	84.3	83.1	83.9	98.0	
B05	46.7	58.8	48.4	42.6	19.3	55.2	90.5	39.5	43.0	26.9	31.1	29.6	38.1	
B06	
B07	100.0	99.6	111.2	118.3	107.8	104.7	110.8	99.9	97.3	98.6	95.1	91.4	113.7	
B08	87.6	88.6	87.8	81.6	84.6	86.3	79.0	85.6	67.2	73.2	77.6	76.2	72.7	
B09	
C	105.6	104.9	106.9	105.9	107.5	107.4	105.2	103.3	101.8	101.4	99.6	101.6	99.1	
C10	103.0	103.6	103.7	103.1	107.9	100.6	99.5	95.6	88.6	89.4	90.9	91.6	92.9	
C11	106.9	106.0	105.4	109.2	102.9	99.5	102.7	102.1	99.9	95.0	96.7	95.3	95.0	
C12	59.9	69.6	78.7	80.6	77.9	66.2	75.6	86.5	92.3	91.2	116.3	102.2	99.0	
C13	66.1	62.5	58.0	72.3	61.0	56.3	56.1	52.4	53.8	53.3	54.3	51.6	48.1	
C14	91.6	90.2	88.4	87.8	90.0	92.8	77.9	78.4	77.6	74.0	76.9	72.5	78.4	
C15	62.7	61.9	62.7	59.3	67.2	66.8	61.9	63.3	60.6	59.5	67.8	65.1	60.8	
C16	88.7	87.6	86.2	92.4	87.7	91.5	92.0	89.9	86.7	84.6	82.4	78.7	78.4	
C17	94.2	99.9	91.5	97.6	93.4	91.3	81.7	73.7	76.1	74.7	73.9	71.5	71.9	
C18	98.6	91.4	87.8	94.6	92.1	94.5	91.4	90.9	88.1	93.5	90.6	91.9	93.5	
C19	
C20	117.1	100.8	109.7	103.7	98.9	109.9	101.9	97.4	94.0	93.5	91.7	98.5	92.6	
C21	115.2	114.3	125.7	108.6	121.0	112.2	120.8	117.3	107.0	114.1	108.3	110.8	127.2	
C22	84.4	84.1	83.8	84.8	81.6	86.3	85.3	81.5	80.7	81.6	82.1	79.7	80.7	
C23	90.0	94.5	85.8	86.5	91.0	95.7	112.3	113.7	99.1	103.2	95.3	106.5	103.2	
C24	122.0	100.3	92.9	100.1	94.6	90.5	71.7	72.3	74.6	75.0	72.5	72.9	69.6	
C25	145.2	164.3	175.0	162.1	185.4	171.7	166.8	191.1	159.0	179.5	167.7	170.0	140.5	
C26	102.2	105.1	101.6	107.8	104.8	111.6	108.7	92.1	107.7	121.1	99.7	102.6	109.1	
C27	96.8	98.8	103.0	98.9	103.5	104.8	96.6	98.5	96.1	98.9	108.5	101.7	98.8	
C28	85.4	83.9	92.6	95.0	95.9	89.6	93.1	93.4	98.2	100.7	93.5	94.8	92.8	
C29	106.7	116.9	116.5	105.5	98.0	102.3	96.0	113.2	111.9	116.2	115.0	120.7	113.7	
C30	94.4	87.5	133.1	100.9	113.3	99.2	105.5	104.1	123.5	83.3	105.4	98.0	88.1	
C31	76.1	75.3	81.5	79.4	81.3	79.5	80.8	80.2	90.1	97.3	89.7	93.6	86.3	
C32	120.2	116.8	109.7	99.7	130.1	121.8	133.5	110.7	132.9	112.9	131.2	130.5	112.6	
C33	113.7	110.6	110.8	121.9	133.9	107.4	113.8	127.4	108.0	103.9	109.3	99.9	113.8	
D	69.2	86.2	71.5	89.2	84.4	77.6	62.8	75.8	83.9	47.8	73.5	67.7	64.2	
D35	69.2	86.2	71.5	89.2	84.4	77.6	62.8	75.8	83.9	47.8	73.5	67.7	64.2	

* Preliminary data.
 „..“ - Confidential data.

INDUSTRIAL PRODUCTION INDICES
IN JUNE 2025

Table 4

Industrial Production Indices
(Calendar-adjusted, 2021 = 100)

NACE.BG - 2008	2024							2025					
	VI	VII	VIII	IX	X	XI	XII	I	II	III	IV	V	VI*
B_TO_E36	101.3	103.1	98.6	102.7	106.0	104.9	101.7	90.8	90.7	91.8	89.1	89.1	93.0
B	74.1	80.8	101.3	119.5	95.8	92.5	119.3	82.6	75.1	81.8	75.5	76.8	94.4
B05	24.2	51.3	44.0	48.8	40.9	71.6	112.5	55.1	45.4	19.3	9.6	7.9	15.7
B06
B07	97.2	87.6	115.5	137.9	109.8	96.3	124.1	92.4	84.8	95.4	90.6	91.4	113.7
B08	93.7	92.4	90.9	86.0	95.7	96.1	78.6	62.8	52.7	69.6	76.1	79.2	77.8
B09
C	111.4	108.7	103.6	107.0	115.6	111.3	102.6	93.4	93.1	103.7	98.0	100.7	103.5
C10	103.9	103.2	104.8	106.7	119.7	103.4	103.0	87.3	77.0	88.7	87.6	90.3	94.1
C11	127.7	131.0	129.8	120.3	95.7	90.4	95.0	74.6	72.5	86.4	93.0	97.1	113.1
C12	72.5	87.8	84.7	90.1	82.5	64.3	73.8	52.9	63.4	96.4	127.3	119.4	121.1
C13	71.4	63.0	47.3	73.6	64.6	59.2	51.5	47.5	54.1	56.6	54.0	54.9	51.6
C14	98.0	102.0	82.5	87.0	92.4	95.5	73.8	80.9	77.3	72.4	69.7	65.5	85.2
C15	66.9	68.0	50.8	58.2	74.7	77.4	56.9	62.6	58.5	62.5	67.3	62.0	64.0
C16	93.3	93.6	83.5	95.4	93.9	97.6	86.3	76.1	77.4	85.6	82.7	81.7	81.9
C17	97.9	103.2	85.9	96.7	99.8	95.7	75.1	69.2	70.9	77.0	71.0	71.1	76.1
C18	101.9	90.8	81.1	91.3	98.9	107.0	96.9	81.8	79.5	95.6	89.1	92.0	97.4
C19
C20	120.8	101.5	104.6	102.3	99.4	112.4	100.9	91.7	89.2	101.8	92.7	97.8	95.3
C21	123.5	111.2	114.6	100.4	129.4	112.0	127.1	114.0	96.2	125.0	106.2	107.2	141.8
C22	88.7	87.9	79.0	87.6	89.9	88.0	77.4	74.7	75.5	84.6	81.8	79.2	84.9
C23	95.3	102.8	89.8	91.9	101.3	101.8	103.3	84.9	83.3	103.3	96.1	112.9	108.5
C24	123.3	97.3	83.1	95.6	97.8	92.8	65.1	70.9	71.9	80.3	73.1	75.6	71.8
C25	152.8	176.9	173.4	162.4	196.3	189.1	173.3	153.8	139.7	180.7	169.5	166.6	142.3
C26	107.3	109.0	89.8	108.5	117.4	116.6	104.3	85.5	104.7	127.9	96.8	98.7	114.9
C27	104.9	103.2	96.1	101.2	110.3	112.3	86.6	91.6	95.9	102.5	107.9	95.5	105.7
C28	90.9	87.4	81.5	96.7	104.7	94.1	89.5	83.7	95.5	107.7	94.7	92.9	97.4
C29	108.4	107.9	103.6	107.9	105.7	114.2	84.9	115.7	114.9	125.6	114.9	119.4	117.5
C30	104.3	89.0	130.0	97.0	123.5	97.1	89.7	81.5	124.3	81.7	110.4	98.0	91.2
C31	81.2	77.9	77.7	80.4	88.0	84.5	81.6	70.2	83.9	103.1	87.9	93.6	90.7
C32	137.5	117.7	110.0	103.7	144.1	130.0	122.4	95.2	117.3	113.2	127.5	129.1	127.9
C33	116.9	112.0	107.8	128.1	141.5	117.3	150.2	94.3	92.0	103.3	99.3	93.6	117.1
D	64.1	91.9	76.2	77.3	73.8	86.8	81.8	87.2	90.7	53.4	63.4	51.3	52.8
D35	64.1	91.9	76.2	77.3	73.8	86.8	81.8	87.2	90.7	53.4	63.4	51.3	52.8

* Preliminary data.
„..“ - Confidential data.