

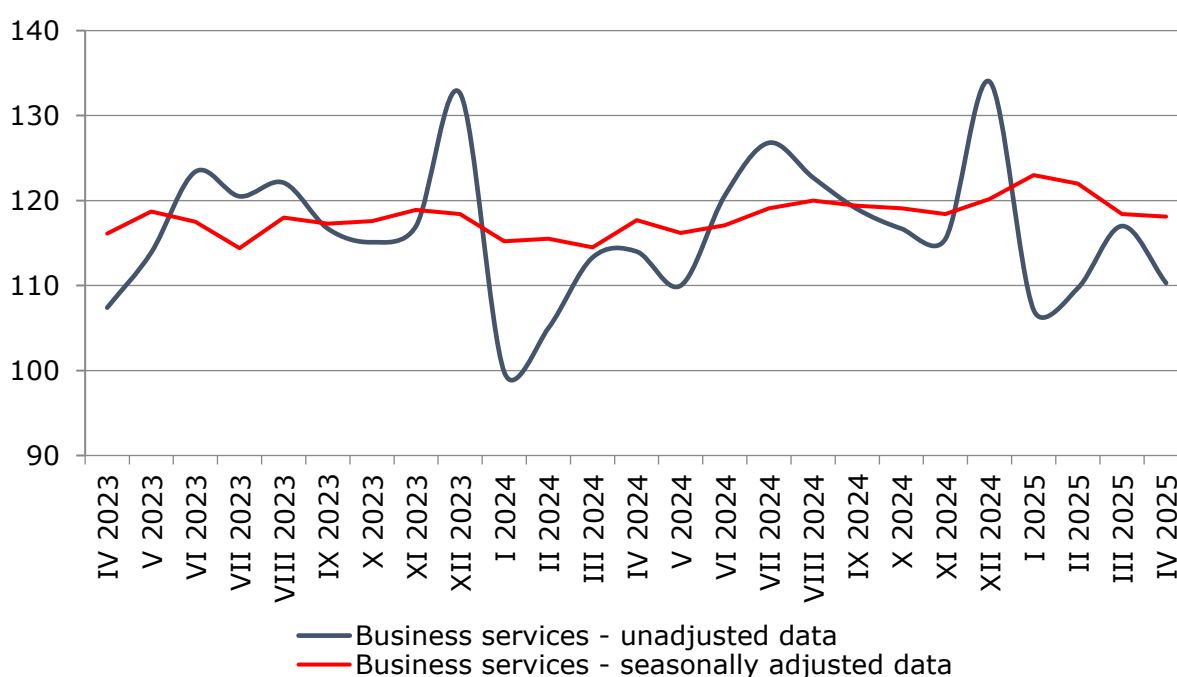


SERVICES PRODUCTION INDICES IN APRIL 2025

In April 2025, the total production index in **Services of the business economy**¹ decreased by 0.2% compared to the previous month. The data are preliminary and seasonally adjusted.

Compared to April 2024, a decrease of 0.9% was registered in the calendar-adjusted index according to preliminary data.

Figure 1. Production indices for Business services (2021 = 100)

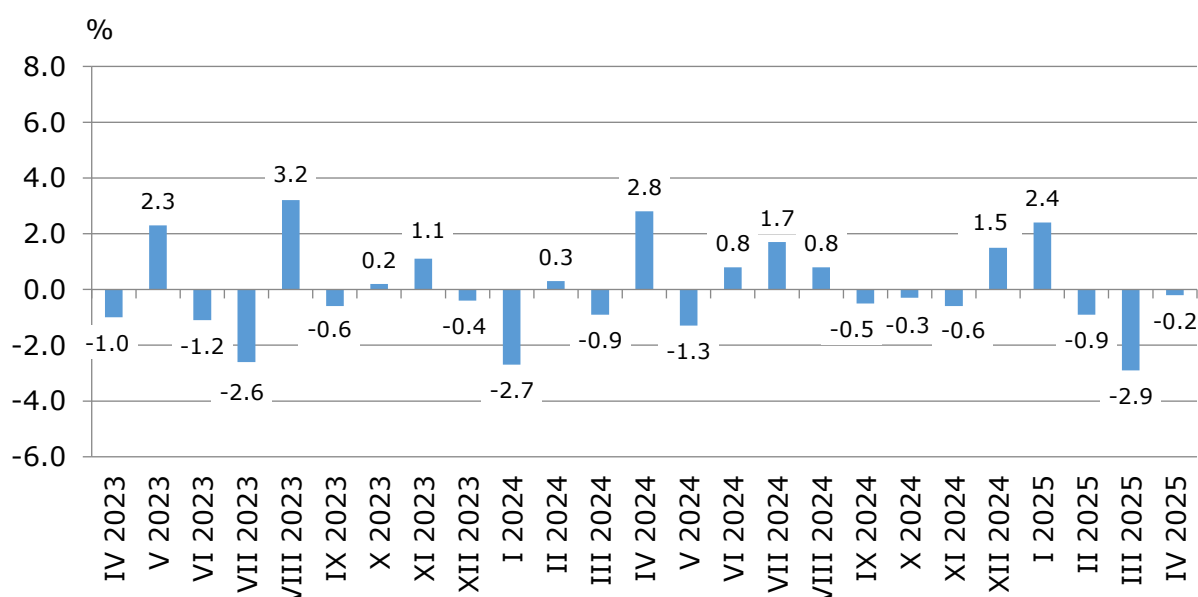


¹ Business services include the following sectors from NACE.BG - 2008: H - Transportation and storage, I - Accommodation and food service activities, J - Information and communication, L - Real estate activities, M_STG - Professional, scientific and technical activities (specific grouping under Regulation (EU) 2019/2152), and N - Administrative and support service activities.

Monthly changes

A decline, compared to the previous month, was reported in the following sectors: 'Administrative and support service activities' - by 8.2%, 'Real estate activities' - by 3.7%, and 'Accommodation and food service activities' - by 0.5%. An increase was seen in the sectors: 'Information and communication' - by 2.5%, 'Transportation and storage' - by 0.8%, and 'Professional, scientific and technical activities' - by 0.7%.

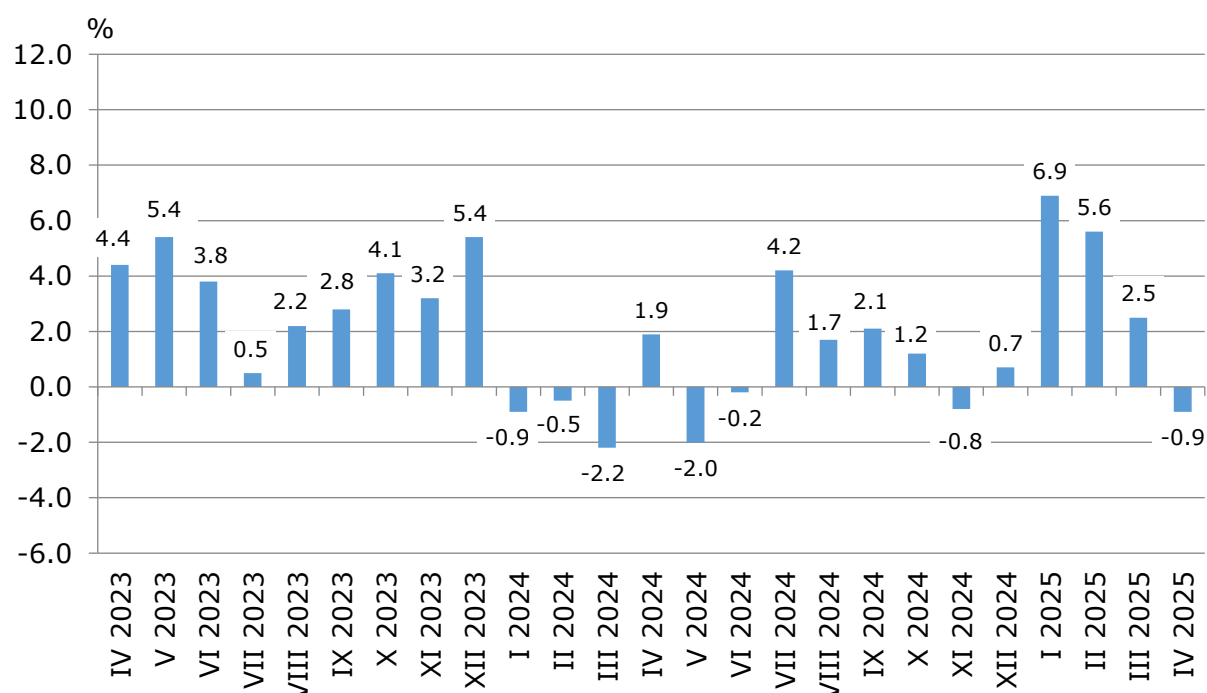
**Figure 2. Changes of production indices for Business services
compared to the previous month
(Seasonally adjusted data)**



Annual changes

On an annual basis, a decrease was observed in the sectors: 'Transportation and storage' - by 5.4%, and 'Accommodation and food service activities' - by 5.1%. A rise was registered in the following sectors: 'Information and communication' - by 3.5%, 'Real estate activities' - by 1.6%, 'Professional, scientific and technical activities' - by 1.0%, and 'Administrative and support service activities' - by 0.8%.

**Figure 3. Changes of production indices for Business services
compared to the same month of the previous year
(Calendar-adjusted data)**



Methodological notes

Monthly indices of production in services are calculated and published two months after the reference period (M+2) in accordance with the requirements of Regulation (EU) 2019/2152 of the European Parliament and of the Council for European Business Statistics.

Production indices in services are calculated by deflating the turnover indices for each activity with the corresponding producer price indices. The purpose of the production index is to measure changes in output volume at monthly intervals. The indices are calculated with 2021 as a base year.

Seasonal adjustment is a statistical method, which eliminates the seasonal component of time series.

Calendar adjustment is an adjustment for variations caused by calendar effects, a different number of calendar and working days in the months, national holidays and outliers (for example, the presence of more non-working days in May could contribute to the decline in some activities).

Since July 2024, all dynamic rows have been recalculated based on the 2021 base year and have been published in IS Infostat.

Annex

Table 1

Changes of production indices in services¹
(Compared to the previous month)

(Per cent)

Economic activities	NACE.BG - 2008	2024		2025			
		XI	XII	I	II	III	IV*
Services of the business economy (except trade and financial and insurance activities)	HTNXK	-0.6	1.5	2.4	-0.9	-2.9	-0.2
Transportation and storage	H	-3.6	4.5	0.1	4.9	-8.1	0.8
Land transport and transport via pipelines	H49	-2.0	2.9	-0.5	-2.0	-2.9	0.3
Water transport	H50	2.2	7.2	4.0	-9.0	3.0	5.2
Air transport	H51	-22.3	30.4	-17.3	6.0	18.0	-5.4
Warehousing and support activities for transportation	H52	-2.5	4.9	6.1	20.6	-21.9	3.5
Postal and courier activities	H53	-0.2	-6.5	0.7	-2.4	-7.8	-0.3
Accommodation and food service activities	I	0.5	-0.3	1.0	-0.5	-1.7	-0.5
Accommodation	I55	-0.7	0.5	1.4	0.6	-3.4	0.9
Food and beverage service activities	I56	1.5	-0.7	-1.9	0.7	-1.4	-2.2
Information and communication	J	-3.2	3.9	4.3	-5.3	-1.9	2.5
Publishing activities	J58	4.6	-4.7	16.2	-12.3	0.9	4.2
Motion picture, video, television programme production; programming and broadcasting activities	J59	0.3	-23.1	35.6	-21.7	3.2	-6.3
Programming and broadcasting activities	J60	-5.5	7.1	9.0	-9.7	-17.7	22.3
Telecommunications	J61	-1.8	-0.9	-5.6	4.5	-2.3	-1.7
Computer programming, consultancy and related activities	J62	-1.6	4.8	6.7	-10.1	0.8	3.9
Information service activities	J63	-23.1	41.3	20.0	-4.8	-13.4	10.9
Real estate activities	L	-7.9	14.9	0.5	7.2	-3.5	-3.7
Professional, scientific and technical activities (specific grouping under Regulation (EU) 2019/2152)	M_STS	3.9	-4.8	2.4	-5.8	-1.1	0.7
Legal and accounting activities	M69	-7.7	-3.8	20.0	-7.2	2.3	-7.3
Management consultancy activities	M702	17.8	-17.6	-11.5	-7.1	-9.5	1.9
Architectural and engineering activities; technical testing and analysis	M71	9.0	-4.8	12.5	-10.4	-5.2	4.1
Advertising and market research	M73	-5.5	10.5	-7.9	-6.8	3.0	5.7
Other professional, scientific and technical activities	M74	4.3	-0.6	-6.4	5.4	4.8	2.1
Administrative and support service activities	N	10.6	-6.6	5.9	-1.0	3.9	-8.2
Rental and leasing activities	N77	-3.7	-0.7	5.2	-1.7	-0.2	-10.1
Employment activities	N78	2.8	13.2	1.4	1.3	-2.6	3.9
Travel agency, tour operator reservation service and related activities	N79	1.9	1.3	3.8	-0.4	-0.6	-1.3
Security and investigation activities	N80	4.2	-0.4	17.6	-3.8	-8.6	-0.4
Services to buildings and landscape activities	N81	6.7	-1.8	1.3	-1.7	-4.9	1.3
Office administrative, office support and other business support activities	N82	41.6	-30.0	-1.7	2.1	36.7	-27.3

¹ Seasonally adjusted data.

* Preliminary data.

Table 2

Changes of production indices in services¹
(Compared to the same month of the previous year)

(Per cent)

Economic activities	NACE.BG - 2008	2024		2025			
		XI	XII	I	II	III	IV*
Services of the business economy (except trade and financial and insurance activities)	HTNXK	-0.8	0.7	6.9	5.6	2.5	-0.9
Transportation and storage	H	1.0	6.5	4.7	7.8	-2.1	-5.4
Land transport and transport via pipelines	H49	3.6	7.1	2.8	-2.6	-5.1	-9.4
Water transport	H50	-22.7	-22.8	19.9	0.6	11.4	6.2
Air transport	H51	9.2	59.8	19.7	18.2	49.6	17.0
Warehousing and support activities for transportation	H52	-8.0	-0.6	6.8	31.8	-2.6	0.4
Postal and courier activities	H53	18.3	10.8	1.5	1.0	-5.9	-15.0
Accommodation and food service activities	I	3.7	0.1	3.2	1.1	-2.8	-5.1
Accommodation	I55	5.6	0.9	-0.9	7.3	-5.0	-4.1
Food and beverage service activities	I56	2.5	-0.4	6.4	-3.3	-1.2	-5.8
Information and communication	J	-0.4	0.4	11.7	3.4	2.1	3.5
Publishing activities	J58	-13.3	-20.3	19.9	-5.4	-0.2	2.2
Motion picture, video, television programme production; programming and broadcasting activities	J59	41.0	-24.6	20.0	-17.9	-12.2	-9.4
Programming and broadcasting activities	J60	-17.5	-3.6	7.3	-21.1	-22.5	-10.6
Telecommunications	J61	7.4	6.6	-1.0	0.5	-1.2	-2.9
Computer programming, consultancy and related activities	J62	-0.4	-1.1	16.5	4.6	3.3	7.0
Information service activities	J63	-27.4	9.8	38.5	26.2	20.9	19.0
Real estate activities	L	-29.0	-5.6	9.9	18.1	15.9	1.6
Professional, scientific and technical activities (specific grouping under Regulation (EU) 2019/2152)	M_STS	6.0	-1.9	7.1	2.5	5.6	1.0
Legal and accounting activities	M69	-7.9	-11.7	19.3	7.5	21.0	6.0
Management consultancy activities	M702	48.4	22.6	-11.7	-17.1	-1.0	-9.8
Architectural and engineering activities; technical testing and analysis	M71	17.6	-2.4	30.4	24.3	-0.6	0.6
Advertising and market research	M73	-13.7	-6.0	-13.7	-14.3	-6.2	-8.3
Other professional, scientific and technical activities	M74	-6.0	-6.9	5.1	9.1	10.7	14.4
Administrative and support service activities	N	0.6	0.7	1.6	7.4	9.4	0.8
Rental and leasing activities	N77	-10.8	-1.0	-30.5	-5.8	-11.0	-24.4
Employment activities	N78	-8.2	13.1	21.9	25.8	18.7	40.5
Travel agency, tour operator reservation service and related activities	N79	-14.0	-4.0	14.4	9.0	10.6	1.4
Security and investigation activities	N80	-8.3	-5.0	19.4	10.7	1.6	1.5
Services to buildings and landscape activities	N81	0.5	0.6	1.1	1.8	-7.8	-7.1
Office administrative, office support and other business support activities	N82	29.0	2.1	-3.9	2.2	35.4	1.0

¹ Calendar-adjusted data.

* Preliminary data.

SERVICES PRODUCTION INDICES IN APRIL 2025

Table 3

Production indices in services - seasonally adjusted (2021 = 100)

NACE.BG - 2008	2024									2025			
	IV	V	VI	VII	VIII	IX	X	XI	XII	I	II	III	IV*
HTNXK	117.7	116.2	117.1	119.1	120.0	119.4	119.1	118.4	120.2	123.0	122.0	118.4	118.1
H	117.2	110.8	109.7	113.0	109.5	109.9	114.0	109.9	114.9	115.0	120.7	110.9	111.8
H49	111.2	104.7	105.2	107.0	104.0	104.0	106.6	104.4	107.4	106.8	104.7	101.6	102.0
H50	132.4	121.0	131.4	128.0	136.1	125.0	125.1	127.9	137.1	142.5	129.7	133.6	140.5
H51	266.2	283.2	255.0	250.9	229.1	256.4	309.1	240.3	313.3	259.1	274.7	324.3	306.9
H52	111.3	103.8	100.9	107.0	103.6	103.1	104.7	102.1	107.1	113.6	137.0	107.0	110.8
H53	128.9	118.1	120.2	130.2	127.3	126.2	133.1	132.8	124.2	125.1	122.2	112.6	112.3
I	144.6	142.9	143.7	144.4	143.6	144.0	143.7	144.4	144.0	145.4	144.7	142.2	141.5
I55	182.3	182.0	188.6	190.7	188.6	187.2	179.9	178.6	179.4	182.0	183.2	176.9	178.5
I56	122.1	120.7	119.7	117.9	117.8	118.8	122.3	124.2	123.2	120.9	121.8	120.1	117.4
J	115.8	117.5	115.9	119.7	120.3	122.0	120.4	116.6	121.1	126.3	119.6	117.3	120.3
J58	88.8	92.4	88.6	110.6	150.4	86.2	85.1	89.0	84.8	98.5	86.4	87.2	90.8
J59	92.2	83.1	123.6	109.6	87.4	109.5	106.7	107.0	82.2	111.5	87.3	90.0	84.4
J60	96.3	82.0	75.0	76.6	82.1	79.7	77.7	73.5	78.7	85.7	77.4	63.7	77.9
J61	118.0	121.4	120.9	122.2	120.7	125.6	125.7	123.4	122.4	115.5	120.7	118.0	115.9
J62	118.1	120.0	116.8	121.2	122.7	124.9	122.3	120.3	126.1	134.5	120.9	121.9	126.6
J63	120.2	121.0	110.6	122.6	115.6	123.3	120.6	92.7	130.9	157.1	149.6	129.6	143.7
L	101.4	95.5	105.3	94.9	97.0	103.5	96.5	88.9	102.2	102.7	110.1	106.2	102.4
M_STS	114.4	115.2	119.0	125.6	135.6	124.4	124.0	128.8	122.6	125.6	118.3	117.0	117.9
M69	113.6	130.0	117.7	124.9	136.5	129.3	128.9	119.0	114.4	137.3	127.4	130.4	120.9
M702	117.8	116.7	144.3	170.4	199.9	174.5	148.4	174.8	144.1	127.5	118.4	107.2	109.3
M71	111.4	111.1	105.2	109.7	113.9	109.4	116.0	126.4	120.3	135.4	121.3	115.0	119.7
M73	128.6	114.9	123.9	115.2	115.8	111.5	120.8	114.1	126.0	116.0	108.1	111.4	117.7
M74	105.3	102.9	112.2	115.4	120.8	104.4	109.6	114.3	113.6	106.3	112.0	117.4	119.9
N	113.3	116.3	117.9	114.9	115.2	116.0	113.3	125.3	117.0	123.9	122.7	127.5	117.1
N77	122.7	116.3	126.3	129.3	119.0	120.1	118.6	114.2	113.4	119.4	117.4	117.1	105.3
N78	97.7	124.6	121.1	111.1	112.9	116.3	115.9	119.1	134.9	136.8	138.6	134.9	140.2
N79	197.0	197.0	205.7	200.6	207.4	199.9	191.1	194.7	197.3	204.8	203.9	202.8	200.2
N80	100.9	103.2	98.8	97.6	103.4	101.9	96.3	100.4	99.9	117.5	113.0	103.3	102.9
N81	113.6	103.3	108.3	101.2	100.2	103.9	105.6	112.7	110.7	112.1	110.2	104.9	106.3
N82	106.1	107.5	110.9	107.4	105.6	109.3	108.4	153.4	107.4	105.6	107.8	147.3	107.1

* Preliminary data.

SERVICES PRODUCTION INDICES IN APRIL 2025

Table 4

Production indices in services - calendar-adjusted (2021 = 100)

NACE.BG - 2008	2024									2025			
	IV	V	VI	VII	VIII	IX	X	XI	XII	I	II	III	IV*
HTNXK	112.2	112.1	124.2	129.8	126.8	122.5	117.6	114.9	134.4	106.1	110.2	117.1	111.3
H	116.0	110.2	115.6	126.2	111.1	111.4	118.7	110.2	110.4	97.6	109.9	111.4	109.7
H49	112.0	104.2	109.4	115.4	98.5	101.8	112.9	109.5	104.7	91.0	100.1	107.1	101.5
H50	135.3	130.2	135.8	153.3	151.0	129.5	134.9	116.6	133.2	108.8	105.4	130.9	143.7
H51	209.2	281.8	326.8	424.3	373.6	350.6	301.8	131.9	212.9	142.0	146.8	223.9	244.8
H52	111.1	103.4	105.1	116.6	106.8	104.3	108.0	100.9	104.9	100.9	124.5	107.7	111.5
H53	129.2	113.6	120.8	127.4	119.1	118.7	134.4	146.7	136.3	121.2	117.6	114.2	109.9
I	126.6	136.3	161.3	202.4	222.1	158.1	121.4	109.5	124.9	117.6	121.4	123.7	120.2
I55	148.1	159.5	220.4	302.2	341.3	219.5	132.0	114.2	136.3	132.0	154.8	139.2	142.0
I56	114.0	122.7	126.9	144.1	152.5	122.3	115.1	106.7	118.2	109.2	102.5	114.6	107.4
J	109.9	112.9	120.0	117.4	113.4	121.3	122.0	119.7	150.8	114.5	108.3	119.8	113.7
J58	77.2	82.4	93.7	135.1	149.8	105.7	89.0	91.0	96.4	85.8	68.9	73.2	78.9
J59	80.6	71.7	123.0	98.8	70.1	93.1	123.4	122.8	153.7	83.0	69.6	88.3	73.0
J60	99.6	87.4	79.0	64.5	60.1	75.0	95.8	100.5	82.5	60.1	70.6	58.0	89.1
J61	112.4	120.8	124.8	124.2	123.5	130.2	126.3	123.8	134.4	108.6	111.2	114.6	109.1
J62	111.4	113.2	122.5	115.6	111.1	121.2	123.6	120.2	168.8	121.2	108.2	130.2	119.2
J63	119.1	114.5	107.3	116.4	102.0	116.4	115.1	115.6	158.7	144.1	143.7	133.4	141.7
L	94.8	87.7	109.3	96.8	97.7	111.2	91.4	85.5	123.4	95.8	108.4	105.7	96.3
M_STS	110.6	108.7	125.4	126.4	126.0	122.3	122.8	129.4	168.8	103.8	106.0	121.1	111.7
M69	118.5	129.0	125.8	127.7	122.7	122.6	123.9	114.3	142.7	120.7	116.8	138.7	125.6
M702	108.6	101.7	155.1	179.0	197.9	195.9	145.4	167.4	187.1	106.1	104.4	104.5	98.0
M71	102.9	100.3	107.7	108.7	109.8	97.5	109.6	127.5	199.2	103.5	104.6	121.0	103.5
M73	129.3	115.2	128.9	111.3	98.8	105.0	134.8	134.7	168.4	83.5	91.4	109.6	118.6
M74	98.8	97.4	118.6	113.1	108.3	102.3	109.0	111.9	145.1	98.7	107.9	124.8	113.0
N	109.6	114.5	128.1	126.7	127.0	126.1	111.7	121.1	118.4	106.3	112.8	120.9	110.5
N77	130.9	124.2	130.0	141.2	121.5	121.6	113.1	115.3	123.3	97.6	103.5	109.4	99.0
N78	101.7	123.1	120.5	110.4	111.2	114.4	117.6	119.1	155.4	121.0	136.0	137.6	143.0
N79	139.4	162.0	301.7	326.0	370.5	323.1	167.3	95.8	123.0	120.1	125.8	139.8	141.4
N80	99.7	101.7	98.9	98.9	105.6	103.9	98.9	99.6	107.6	106.9	111.8	100.2	101.2
N81	112.7	106.6	116.5	109.9	103.4	102.9	106.0	112.7	116.3	95.9	100.4	101.7	104.8
N82	101.7	106.5	119.1	105.8	100.2	111.7	108.3	167.5	104.8	101.7	106.2	147.5	102.8

* Preliminary data.