

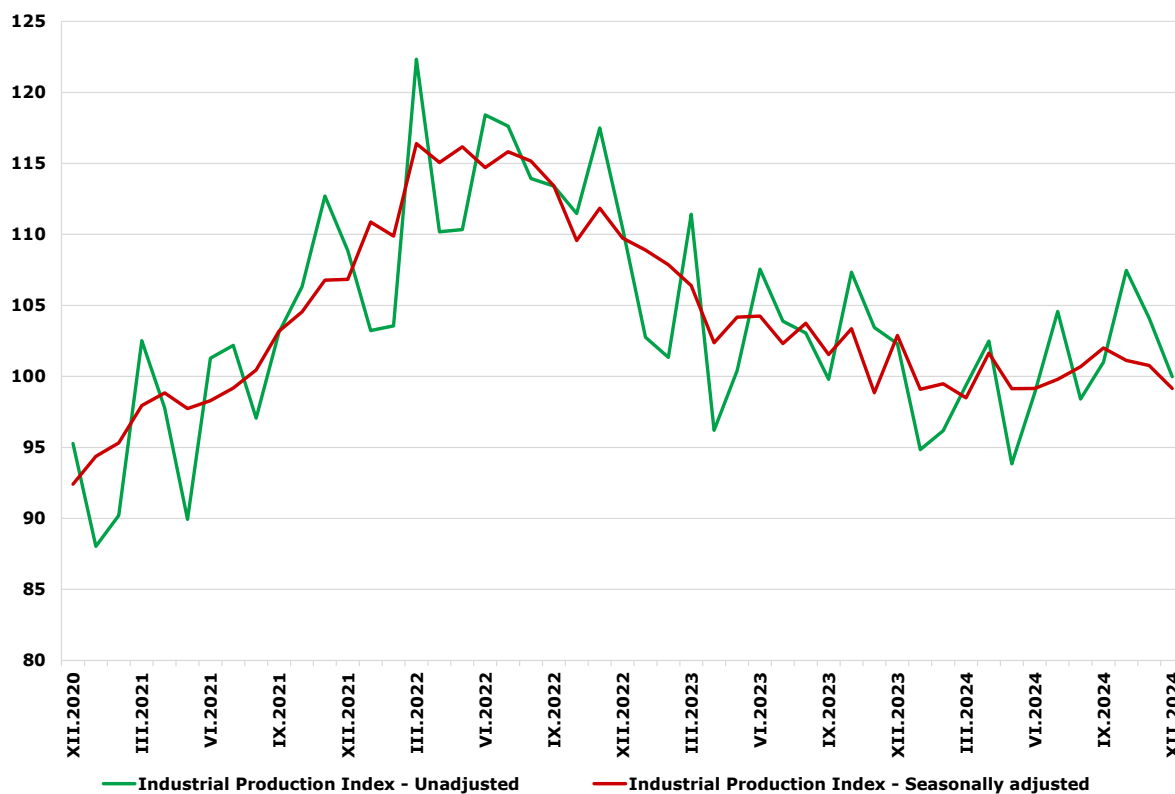


INDUSTRIAL PRODUCTION INDICES IN DECEMBER 2024

The Industrial Production Index decreased by 1.6% in December 2024 compared to the previous month. The data are preliminary and seasonally adjusted.

In comparison with December 2023, a decrease of 3.9% was registered in the calendar-adjusted Industrial Production Index.

Figure 1. Industrial Production Indices (2021 = 100)



INDUSTRIAL PRODUCTION INDICES IN DECEMBER 2024

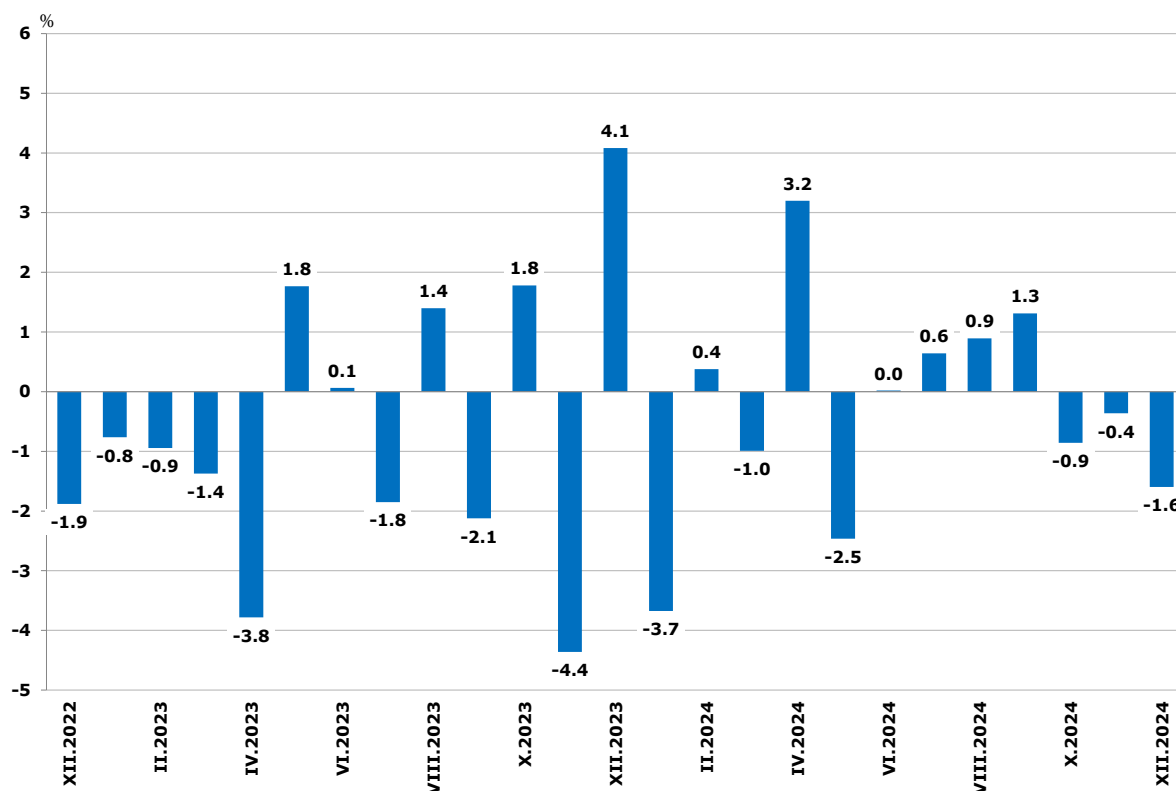
Monthly changes

In December 2024, compared to the previous month, a decrease was seen in the electricity, gas, steam and air conditioning supply - by 7.4%, and in the manufacturing - by 1.6%, while an increase was registered in the mining and quarrying industry - by 21.4%.

More significant decline in the manufacturing was reported in the manufacture of basic metals - by 19.8%, in the manufacture of wearing apparel - by 15.4%, and in the manufacture of paper and paper products - by 9.2%.

A Growth was observed in the manufacture of other non-metallic mineral products - by 16.9%, in the manufacture of tobacco products - by 12.3%, in other manufacturing - by 9.7%, and in the manufacture of basic pharmaceutical products and pharmaceutical preparations - by 9.2%.

**Figure 2. Changes of Industrial Production Indices compared to the previous month
(Seasonally adjusted)**



INDUSTRIAL PRODUCTION INDICES IN DECEMBER 2024

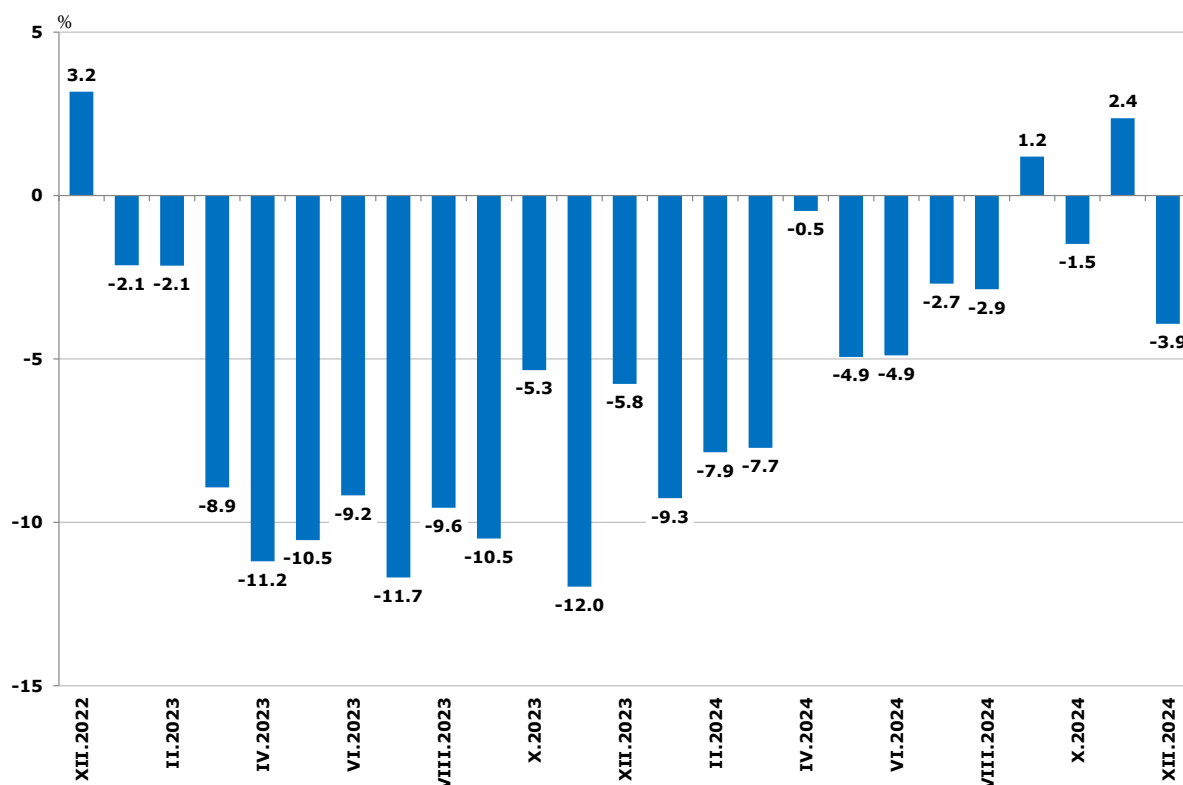
Annual changes

On an annual basis, a decrease of the Industrial Production Index was observed in the electricity, gas, steam and air conditioning supply - by 28.8%, and in the manufacturing - by 1.2%, while an increase was registered in the mining and quarrying industry - by 8.0%.

The most significant production decline in the manufacturing, compared to the same month of the previous year, was seen in the manufacture of basic metals - by 36.2%, in the manufacture of wearing apparel - by 23.0%, and in the manufacture of leather and related products - by 20.8%.

A rise was observed in the manufacture of basic pharmaceutical products and pharmaceutical preparations - by 29.4%, in the manufacture of fabricated metal products, except machinery and equipment - by 21.3%, and in the manufacture of computer, electronic and optical products - by 17.9%.

Figure 3. Changes of the Industrial Production Indices compared to the same month of the previous year (Calendar-adjusted)



INDUSTRIAL PRODUCTION INDICES

IN DECEMBER 2024

Methodological notes

The monthly indices of industrial production are calculated in accordance with the requirements of Regulation (EU) 2019/2152 of the European Parliament and of the Council on European Business Statistics.

The Monthly Industrial Production and Industrial Turnover Indices measure changes in production and turnover values of industrial enterprises. This information can be used to assess the current economic development and for short-term forecasts. Indices do not measure the actual production level; they aim to measure the average change in the value of production between two points in time. Indices are compiled based on information collected through a representative sampling survey on industrial enterprises. The sample covers enterprises with an annual turnover of more than 97% of the total turnover in the industry.

The Industrial Production Indices are calculated at a constant base year, that is to say they are weighted with the structure of the value added at factor costs in the base year.

Seasonal adjustment is a statistical method which eliminates the seasonal component of the time series.

Calendar adjustment is an adjustment for variations in the monthly data, caused by calendar effects, the different number of calendar and working days in the months, national holidays and outliers (for example, the presence of more non-working days in May could contribute to the decline in production in some activities).

Since July 2024, all dynamic rows have been recalculated based on 2021 as base year and have been published in IS Infostat.

INDUSTRIAL PRODUCTION INDICES

IN DECEMBER 2024

Annex

Table 1

Changes of Industrial Production Indices compared to the previous month¹

(Per cent)

Economic activities	NACE.BG - 2008	2024					
		VII	VIII	IX	X	XI	XII*
Industry	B_TO_E36	0.6	0.9	1.3	-0.9	-0.4	-1.6
Mining and quarrying	B	8.5	22.2	9.4	-23.3	1.5	21.4
Mining of coal and lignite	B05	25.8	-17.7	-12.0	-54.7	186.3	64.7
Extraction of crude petroleum and natural gas	B06
Mining of metal ores	B07	-0.3	11.6	6.4	-8.9	-2.9	7.5
Other mining and quarrying	B08	1.1	-0.9	-7.0	3.6	2.0	-8.7
Mining support service activities	B09
Manufacturing	C	-0.7	1.9	-0.9	1.5	-0.1	-1.6
Manufacture of food products	C10	0.5	0.1	-0.5	4.6	-6.7	-0.6
Manufacture of beverages	C11	-0.8	-0.6	3.6	-5.7	-3.3	3.2
Manufacture of tobacco products	C12	16.2	13.1	2.5	-3.4	-15.1	12.3
Manufacture of textiles	C13	-5.4	-7.2	24.7	-15.7	-7.7	0.8
Manufacture of wearing apparel	C14	-1.5	-2.0	-0.6	2.4	3.2	-15.4
Manufacture of leather and related products	C15	-1.2	1.3	-5.4	13.2	-0.5	-7.2
Manufacture of wood and of products of wood and cork, except furniture; manufacture of articles of straw and plaiting materials	C16	-1.3	-1.6	7.3	-5.1	4.3	0.6
Manufacture of paper and paper products	C17	6.0	-8.4	6.7	-4.3	-2.3	-9.2
Printing and reproduction of recorded media	C18	-7.3	-3.9	7.8	-2.6	2.6	-3.1
Manufacture of coke and refined petroleum products	C19
Manufacture of chemicals and chemical products	C20	-13.9	8.9	-5.5	-4.6	11.1	-7.1
Manufacture of basic pharmaceutical products and pharmaceutical preparations	C21	-0.8	10.0	-13.6	11.4	-7.2	9.2
Manufacture of rubber and plastic products	C22	-0.3	-0.4	1.2	-3.7	5.7	-0.7
Manufacture of other non-metallic mineral products	C23	5.0	-9.3	0.9	5.2	5.2	16.9
Manufacture of basic metals	C24	-17.8	-7.3	7.7	-5.5	-4.3	-19.8
Manufacture of fabricated metal products, except machinery and equipment	C25	13.1	6.5	-7.3	14.3	-7.4	-4.7
Manufacture of computer, electronic and optical products	C26	2.8	-3.3	6.1	-2.8	6.5	-1.4
Manufacture of electrical equipment	C27	2.0	4.2	-3.9	4.6	1.3	-7.6
Manufacture of machinery and equipment n.e.c.	C28	-1.7	10.3	2.6	1.0	-6.6	4.0
Manufacture of motor vehicles, trailers and semi-trailers	C29	9.5	-0.3	-9.4	-7.1	4.4	-5.7
Manufacture of other transport equipment	C30	-7.2	52.1	-24.2	12.3	-12.4	6.3
Manufacture of furniture	C31	-1.1	8.3	-2.7	2.4	-2.2	1.8
Other manufacturing	C32	-2.9	-6.1	-9.1	30.5	-6.4	9.7
Repair and installation of machinery and equipment	C33	-2.7	0.1	10.0	9.9	-19.8	5.6
Electricity, gas, steam and air conditioning supply	D	24.6	-17.0	24.7	-5.4	-8.0	-7.4
Electricity, gas, steam and air conditioning supply	D35	24.6	-17.0	24.7	-5.4	-8.0	-7.4

¹ Seasonally adjusted.

* Preliminary data.

„..“ - Confidential data.

INDUSTRIAL PRODUCTION INDICES

IN DECEMBER 2024

Table 2

Changes of Industrial Production Indices compared to the same month of the previous year²

(Per cent)

Economic activities	NACE.BG - 2008	2024					
		VII	VIII	IX	X	XI	XII*
Industry	B_TO_E36	-2.7	-2.9	1.2	-1.5	2.4	-3.9
Mining and quarrying	B	-1.6	15.4	30.9	-9.9	-5.0	8.0
Mining of coal and lignite	B05	-8.8	-27.1	-18.3	-53.5	-4.7	26.9
Extraction of crude petroleum and natural gas	B06
Mining of metal ores	B07	-5.6	8.4	23.7	-5.7	-16.3	-4.1
Other mining and quarrying	B08	-0.1	-0.3	-2.0	-15.7	-0.1	-13.7
Mining support service activities	B09
Manufacturing	C	-3.9	-1.9	-1.6	0.2	3.2	-1.2
Manufacture of food products	C10	2.6	2.7	-0.3	3.3	-2.5	-3.4
Manufacture of beverages	C11	-1.9	-0.6	5.3	-3.4	-12.6	-3.5
Manufacture of tobacco products	C12	39.5	-19.7	2.5	35.4	3.5	13.9
Manufacture of textiles	C13	-7.8	-24.3	10.2	-5.6	-22.4	-14.6
Manufacture of wearing apparel	C14	-10.5	-9.2	-16.8	-10.7	-2.1	-23.0
Manufacture of leather and related products	C15	-22.9	-21.7	-31.1	-7.6	-18.8	-20.8
Manufacture of wood and of products of wood and cork, except furniture; manufacture of articles of straw and plaiting materials	C16	-0.8	0.0	10.0	-2.5	4.1	9.4
Manufacture of paper and paper products	C17	15.8	11.0	6.3	-1.0	-4.0	-10.6
Printing and reproduction of recorded media	C18	2.7	-1.0	3.9	2.5	3.5	-14.8
Manufacture of coke and refined petroleum products	C19
Manufacture of chemicals and chemical products	C20	9.4	11.6	5.0	-11.6	20.1	5.6
Manufacture of basic pharmaceutical products and pharmaceutical preparations	C21	6.2	17.8	-6.0	7.7	1.4	29.4
Manufacture of rubber and plastic products	C22	-0.5	-0.3	-1.2	-5.4	0.3	-0.3
Manufacture of other non-metallic mineral products	C23	3.3	-5.6	-2.2	4.1	13.0	11.8
Manufacture of basic metals	C24	-2.9	-19.4	-14.9	-13.9	-14.7	-36.2
Manufacture of fabricated metal products, except machinery and equipment	C25	12.5	15.1	25.3	23.7	23.9	21.3
Manufacture of computer, electronic and optical products	C26	-5.6	-13.9	4.1	6.4	17.4	17.9
Manufacture of electrical equipment	C27	-15.0	-8.2	-8.1	3.3	8.4	-8.5
Manufacture of machinery and equipment n.e.c.	C28	-17.4	-1.9	-4.3	3.2	-4.2	-4.4
Manufacture of motor vehicles, trailers and semi-trailers	C29	-2.1	-10.6	-14.3	-29.0	-13.4	-14.6
Manufacture of other transport equipment	C30	-41.2	-1.4	-23.0	9.8	4.0	1.6
Manufacture of furniture	C31	-8.5	5.2	4.5	13.3	5.0	-6.7
Other manufacturing	C32	-25.8	-32.0	-28.4	-10.1	-3.7	-4.2
Repair and installation of machinery and equipment	C33	-0.1	-8.9	4.5	8.8	-8.5	-9.0
Electricity, gas, steam and air conditioning supply	D	12.9	-10.3	13.3	7.3	11.7	-28.8
Electricity, gas, steam and air conditioning supply	D35	12.9	-10.3	13.3	7.3	11.7	-28.8

² Calendar-adjusted.

* Preliminary data.

„..“ - Confidential data.

INDUSTRIAL PRODUCTION INDICES

IN DECEMBER 2024

Table 3

Industrial Production Indices (Seasonally adjusted, 2021 = 100)

NACE.BG - 2008	2023	2024											
	XII	I	II	III	IV	V	VI	VII	VIII	IX	X	XI	XII*
B_TO_E36	102.9	99.1	99.5	98.5	101.6	99.1	99.2	99.8	100.7	102.0	101.1	100.8	99.2
B	100.3	88.7	80.2	81.8	84.8	76.0	77.2	83.8	102.4	112.0	85.9	87.2	105.8
B05	69.1	51.7	34.7	47.1	47.0	38.7	46.7	58.8	48.4	42.6	19.3	55.2	90.9
B06
B07	114.8	110.3	104.6	101.9	106.4	101.2	100.0	99.6	111.2	118.3	107.8	104.7	112.6
B08	90.1	88.3	105.9	97.3	99.0	89.5	87.6	88.6	87.8	81.6	84.6	86.3	78.8
B09
C	106.6	103.4	106.6	105.2	105.9	103.0	105.6	104.9	106.9	105.9	107.5	107.4	105.6
C10	102.9	106.5	104.6	103.6	105.8	98.3	103.0	103.6	103.7	103.1	107.9	100.6	100.0
C11	106.0	110.8	111.2	103.4	112.8	102.4	106.9	106.0	105.4	109.2	102.9	99.5	102.7
C12	67.4	54.9	66.0	79.0	79.2	70.5	59.9	69.6	78.7	80.6	77.9	66.2	74.3
C13	65.4	62.5	66.4	61.8	62.1	63.9	66.1	62.5	58.0	72.3	61.0	56.3	56.7
C14	99.1	93.7	92.0	88.7	87.8	88.9	91.6	90.2	88.4	87.8	90.0	92.8	78.5
C15	78.4	66.1	70.0	63.7	67.5	66.1	62.7	61.9	62.7	59.3	67.2	66.8	62.0
C16	84.6	96.7	102.6	96.5	91.1	88.7	88.7	87.6	86.2	92.4	87.7	91.5	92.0
C17	90.0	90.2	92.3	89.3	95.7	93.4	94.2	99.9	91.5	97.6	93.4	91.3	82.9
C18	107.3	97.8	95.0	94.8	95.9	93.5	98.6	91.4	87.8	94.6	92.1	94.5	91.6
C19
C20	96.5	97.3	100.1	99.1	107.6	108.5	117.1	100.8	109.7	103.7	98.9	109.9	102.1
C21	94.3	113.4	125.5	126.3	116.1	117.7	115.2	114.3	125.7	108.6	121.0	112.2	122.5
C22	86.6	80.8	79.9	81.9	85.2	82.5	84.4	84.1	83.8	84.8	81.6	86.3	85.7
C23	102.8	88.9	101.9	94.3	97.6	86.1	90.0	94.5	85.8	86.5	91.0	95.7	111.9
C24	104.9	105.7	114.9	114.6	118.8	118.1	122.0	100.3	92.9	100.1	94.6	90.5	72.5
C25	133.5	154.4	147.7	143.7	153.6	145.8	145.2	164.3	175.0	162.1	185.4	171.7	163.6
C26	93.7	105.7	125.2	99.7	99.2	94.7	102.2	105.1	101.6	107.8	104.8	111.6	110.1
C27	104.4	97.2	107.9	101.3	92.2	91.3	96.8	98.8	103.0	98.9	103.5	104.8	96.9
C28	98.1	86.0	92.8	90.7	88.0	85.3	85.4	83.9	92.6	95.0	95.9	89.6	93.2
C29	109.5	125.9	120.7	112.1	126.8	114.8	106.7	116.9	116.5	105.5	98.0	102.3	96.5
C30	103.5	77.7	85.4	100.8	99.4	98.2	94.4	87.5	133.1	100.9	113.3	99.2	105.5
C31	87.2	81.9	81.4	84.3	79.7	80.0	76.1	75.3	81.5	79.4	81.3	79.5	80.9
C32	140.4	137.4	123.2	119.8	119.0	116.8	120.2	116.8	109.7	99.7	130.1	121.8	133.5
C33	124.0	117.7	111.7	103.8	126.2	114.8	113.7	110.6	110.8	121.9	133.9	107.4	113.4
D	87.6	83.3	80.6	75.5	85.6	90.7	69.2	86.2	71.5	89.2	84.4	77.6	71.9
D35	87.6	83.3	80.6	75.5	85.6	90.7	69.2	86.2	71.5	89.2	84.4	77.6	71.9

* Preliminary data.

„..“ - Confidential data.

INDUSTRIAL PRODUCTION INDICES

IN DECEMBER 2024

Table 4

Industrial Production Indices (Calendar-adjusted, 2021 = 100)

NACE.BG - 2008	2023	2024											
	XII	I	II	III	IV	V	VI	VII	VIII	IX	X	XI	XII*
B_TO_E36	105.8	93.9	94.0	101.8	98.8	94.8	101.3	103.1	98.6	102.7	106.0	104.9	101.7
B	110.4	86.5	76.4	79.7	78.3	70.8	74.1	80.8	101.3	119.5	95.8	92.5	119.2
B05	88.7	67.8	37.1	40.2	25.9	17.5	24.2	51.3	44.0	48.8	40.9	71.6	112.5
B06
B07	129.4	111.0	99.4	97.6	109.8	96.7	97.2	87.6	115.5	137.9	109.8	96.3	124.1
B08	91.1	63.7	85.4	93.8	96.7	92.4	93.7	92.4	90.9	86.0	95.7	96.1	78.6
B09
C	103.9	93.7	98.6	108.5	105.7	102.0	111.4	108.7	103.6	107.0	115.6	111.3	102.6
C10	106.7	97.6	92.4	104.5	102.6	97.2	103.9	103.2	104.8	106.7	119.7	103.4	103.0
C11	98.4	80.8	80.9	96.5	109.8	103.9	127.7	131.0	129.8	120.3	95.7	90.4	95.0
C12	62.8	32.8	43.8	80.0	85.4	80.9	72.5	87.8	84.7	90.1	82.5	64.3	71.6
C13	60.3	57.8	67.0	66.0	60.5	67.4	71.4	63.0	47.3	73.6	64.6	59.2	51.5
C14	95.9	98.1	92.2	89.7	79.1	81.9	98.0	102.0	82.5	87.0	92.4	95.5	73.9
C15	72.7	64.7	67.8	68.5	64.4	62.0	66.9	68.0	50.8	58.2	74.7	77.4	57.6
C16	78.9	81.8	91.5	98.0	91.7	92.8	93.3	93.6	83.5	95.4	93.9	97.6	86.3
C17	84.0	88.3	88.1	93.1	93.2	93.4	97.9	103.2	85.9	96.7	99.8	95.7	75.1
C18	113.9	87.9	86.6	96.6	94.2	93.4	101.9	90.8	81.1	91.3	98.9	107.0	97.0
C19
C20	95.6	91.7	94.9	108.6	109.4	107.6	120.8	101.5	104.6	102.3	99.4	112.4	100.9
C21	98.1	109.4	116.3	139.0	115.8	115.8	123.5	111.2	114.6	100.4	129.4	112.0	126.9
C22	77.7	74.4	75.6	85.9	84.4	82.7	88.7	87.9	79.0	87.6	89.9	88.0	77.4
C23	92.4	64.3	85.1	93.3	99.9	91.0	95.3	102.8	89.8	91.9	101.3	101.8	103.3
C24	102.1	107.5	112.2	122.7	119.3	119.5	123.3	97.3	83.1	95.6	97.8	92.8	65.1
C25	139.9	120.7	132.3	144.3	156.8	142.0	152.8	176.9	173.4	162.4	196.3	189.1	169.7
C26	88.5	101.4	122.2	102.6	97.8	92.2	107.3	109.0	89.8	108.5	117.4	116.6	104.3
C27	94.6	90.5	108.6	107.4	89.6	85.7	104.9	103.2	96.1	101.2	110.3	112.3	86.6
C28	93.6	77.3	89.6	96.3	90.0	84.2	90.9	87.4	81.5	96.7	104.7	94.1	89.5
C29	99.4	127.3	122.9	119.2	125.0	110.8	108.4	107.9	103.6	107.9	105.7	114.2	84.9
C30	88.3	61.2	80.4	113.2	104.1	99.7	104.3	89.0	130.0	97.0	123.5	97.1	89.7
C31	87.5	72.2	75.1	87.2	78.2	79.0	81.2	77.9	77.7	80.4	88.0	84.5	81.6
C32	127.8	120.0	108.1	121.2	115.3	114.4	137.5	117.7	110.0	103.7	144.1	130.0	122.4
C33	165.1	86.2	95.7	104.3	114.9	108.9	116.9	112.0	107.8	128.1	141.5	117.3	150.2
D	114.9	101.0	81.5	81.5	72.0	70.0	64.1	91.9	76.2	77.3	73.8	86.8	81.8
D35	114.9	101.0	81.5	81.5	72.0	70.0	64.1	91.9	76.2	77.3	73.8	86.8	81.8

* Preliminary data.

„..“ - Confidential data.