



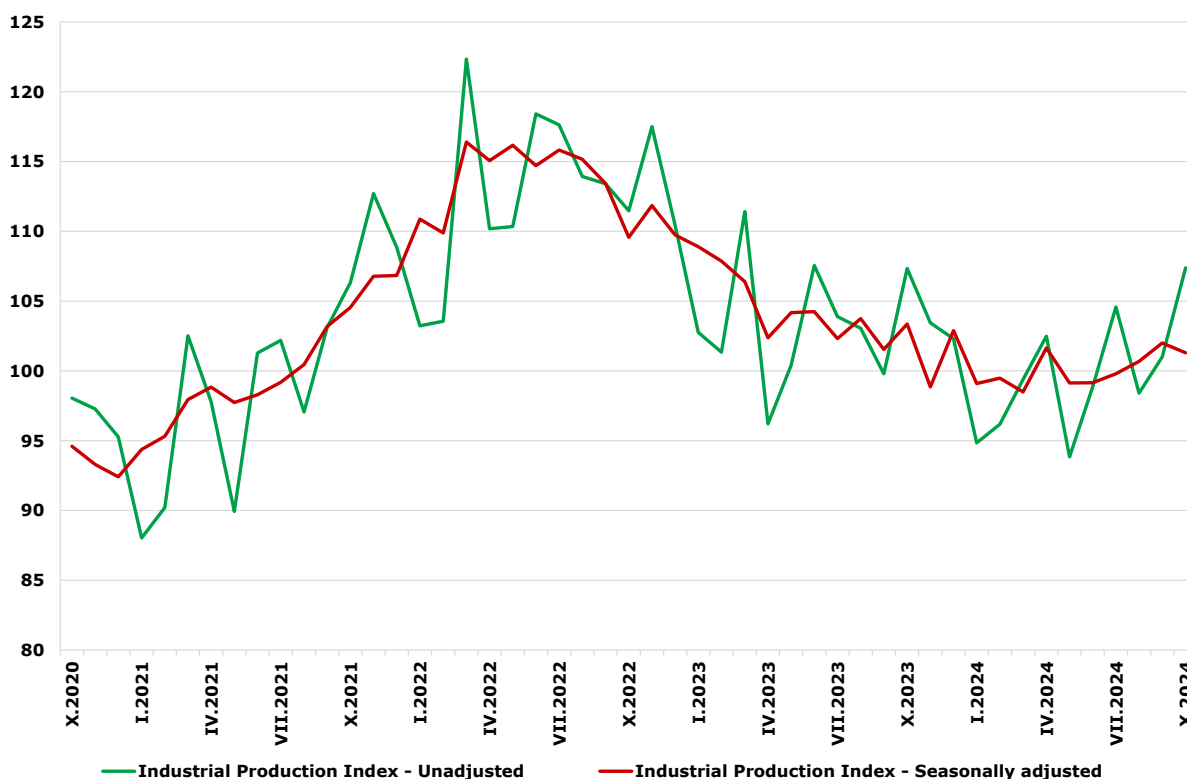
Since July 2024, NSI has started publishing Industrial Production Indices by base year 2021 = 100 in accordance with the requirements of Regulation (EU) 2019/2152 of the European Parliament and of the Council for European Business Statistics and Commission Implementing Regulation (EU) 2020/1197.

INDUSTRIAL PRODUCTION INDICES IN OCTOBER 2024

The Industrial Production Index went down by 0.7% in October 2024 compared to the previous month. The data are preliminary and seasonally adjusted.

In comparison with October 2023, a decrease of 1.6% was registered in the calendar-adjusted Industrial Production Index.

Figure 1. Industrial Production Indices (2021 = 100)



INDUSTRIAL PRODUCTION INDICES IN OCTOBER 2024

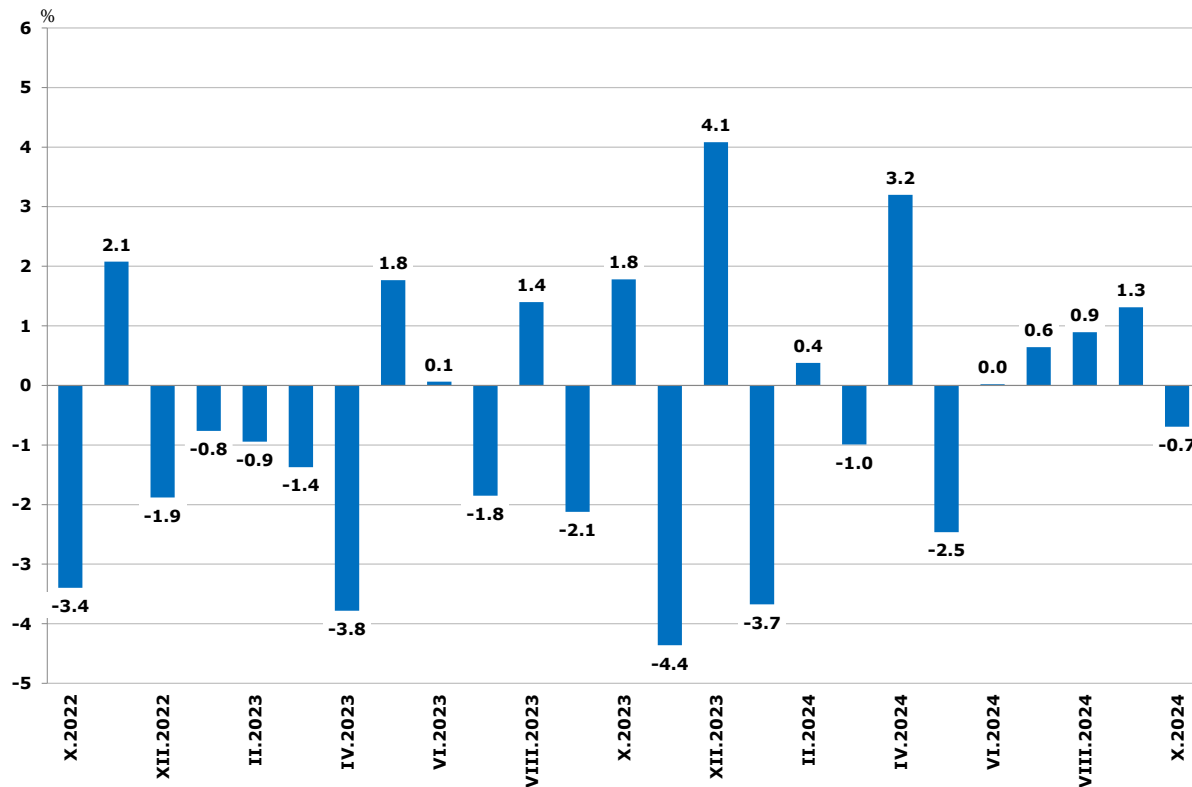
Monthly changes

In October 2024, compared to the previous month, a decline was seen in the mining and quarrying industry - by 22.9%, and in the electricity, gas, steam and air conditioning supply - by 4.8%, while an increase was registered in the manufacturing - by 1.3%.

More significant growth in the manufacturing was reported in the other manufacturing - by 30.5%, in the manufacture of fabricated metal products, except machinery and equipment - by 13.1%, in the manufacture of other transport equipment - by 13.0%, in the manufacture of leather and related products - by 12.7%, and in the manufacture of basic pharmaceutical products and pharmaceutical preparations - by 12.3%.

A decrease was registered in the manufacture of textiles - by 14.6%, and in the manufacture of tobacco products - by 10.6%.

**Figure 2. Changes of Industrial Production Indices compared to the previous month
(Seasonally adjusted)**



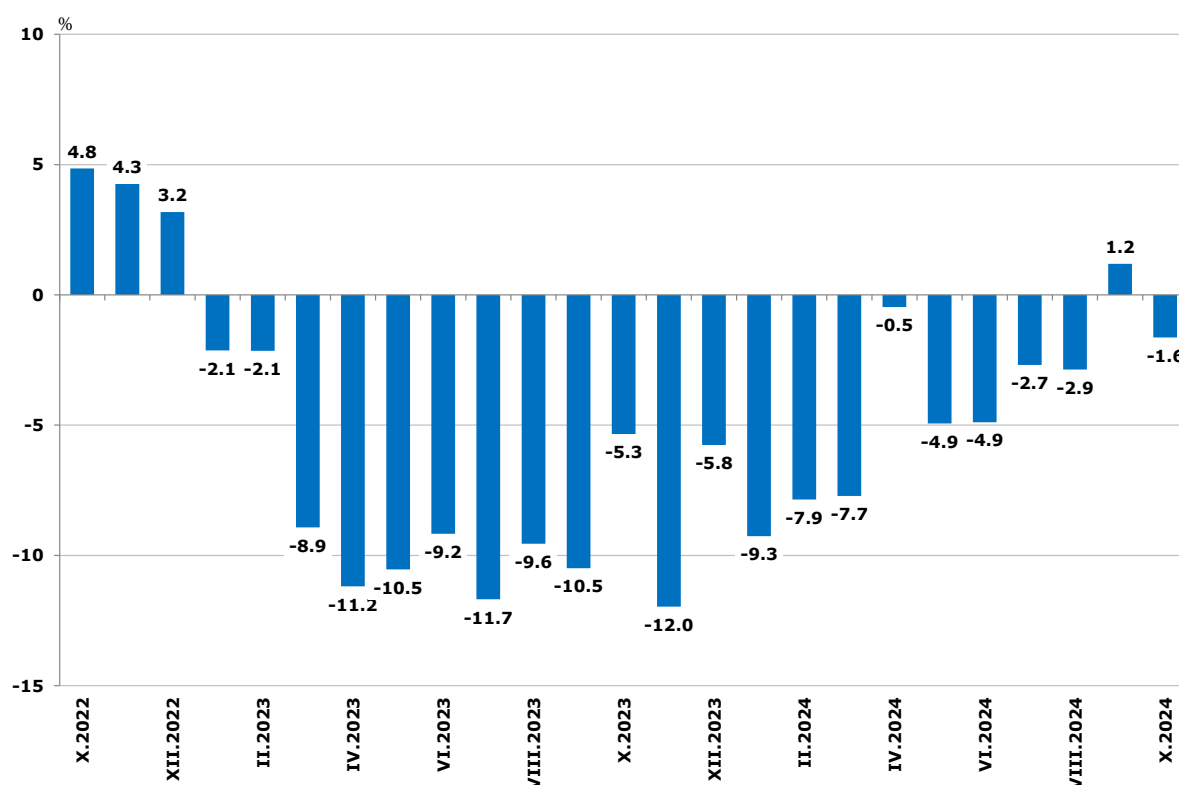
Annual changes

On an annual basis, a decline of the Industrial Production Index was observed in the mining and quarrying industry - by 10.0%, and in the manufacturing - by 0.1%, while an increase was registered in the electricity, gas, steam and air conditioning supply - by 7.9%.

The most significant production drop in the manufacturing, compared to the same month of the previous year, was seen in the manufacture of motor vehicles, trailers and semi-trailers - by 29.0%, and in the manufacture of basic metals - by 14.1%.

A rise was observed in the manufacture of tobacco products - by 23.8%, in the manufacture of fabricated metal products, except machinery and equipment - by 22.2%.

Figure 3. Changes of the Industrial Production Indices compared to the same month of the previous year (Calendar-adjusted)



Methodological notes

The monthly indices of industrial production are calculated in accordance with the requirements of Regulation (EU) 2019/2152 of the European Parliament and of the Council on European Business Statistics.

INDUSTRIAL PRODUCTION INDICES

IN OCTOBER 2024

The Monthly Industrial Production and Industrial Turnover Indices measure changes in production and turnover values of industrial enterprises. This information can be used to access the current economic development and for short-term forecasts. Indices do not measure the actual production level; they aim to measure the average change in the value of production between two points in time. Indices are compiled based on information collected through a representative sampling survey on industrial enterprises. The sample covers enterprises with an annual turnover of more than 97% of the total turnover in the industry.

The Industrial Production Indices are calculated at a constant base year, that is to say they are weighted with the structure of the value added at factor costs in the base year.

Seasonal adjustment is a statistical method which eliminates the seasonal component of the time series.

Calendar adjustment is an adjustment for variations in the monthly data, caused by calendar effects, the different number of calendar and working days in the months, national holidays and outliers (for example, the presence of more non-working days in May could contribute to the decline in production in some activities).

Since July 2024, all dynamic rows have been recalculated based on the 2021 base year and have been published in IS Infostat.

INDUSTRIAL PRODUCTION INDICES

IN OCTOBER 2024

Annex

Table 1

Changes of Industrial Production Indices compared to the previous month¹

(Per cent)

Economic activities	NACE.BG - 2008	2024					
		V	VI	VII	VIII	IX	X*
Industry	B_TO_E36	-2.5	0.0	0.6	0.9	1.3	-0.7
Mining and quarrying	B	-10.3	1.6	8.5	22.2	9.4	-22.9
Mining of coal and lignite	B05	-17.7	20.7	25.8	-17.7	-12.0	-55.6
Extraction of crude petroleum and natural gas	B06
Mining of metal ores	B07	-4.9	-1.3	-0.3	11.6	6.4	-7.7
Other mining and quarrying	B08	-9.6	-2.1	1.1	-0.9	-7.0	3.1
Mining support service activities	B09
Manufacturing	C	-2.8	2.6	-0.7	1.9	-0.9	1.3
Manufacture of food products	C10	-7.1	4.7	0.5	0.1	-0.5	5.0
Manufacture of beverages	C11	-9.3	4.4	-0.8	-0.6	3.6	-5.9
Manufacture of tobacco products	C12	-10.9	-15.0	16.2	13.1	2.5	-10.6
Manufacture of textiles	C13	2.9	3.4	-5.4	-7.2	24.7	-14.6
Manufacture of wearing apparel	C14	1.3	3.0	-1.5	-2.0	-0.6	2.0
Manufacture of leather and related products	C15	-2.0	-5.2	-1.2	1.3	-5.4	12.7
Manufacture of wood and of products of wood and cork, except furniture; manufacture of articles of straw and plaiting materials	C16	-2.7	0.1	-1.3	-1.6	7.3	-2.1
Manufacture of paper and paper products	C17	-2.4	0.9	6.0	-8.4	6.7	-3.7
Printing and reproduction of recorded media	C18	-2.4	5.4	-7.3	-3.9	7.8	-2.5
Manufacture of coke and refined petroleum products	C19
Manufacture of chemicals and chemical products	C20	0.8	7.9	-13.9	8.9	-5.5	-3.6
Manufacture of basic pharmaceutical products and pharmaceutical preparations	C21	1.4	-2.1	-0.8	10.0	-13.6	12.3
Manufacture of rubber and plastic products	C22	-3.2	2.3	-0.3	-0.4	1.2	-3.8
Manufacture of other non-metallic mineral products	C23	-11.8	4.6	5.0	-9.3	0.9	5.1
Manufacture of basic metals	C24	-0.6	3.4	-17.8	-7.3	7.7	-5.6
Manufacture of fabricated metal products, except machinery and equipment	C25	-5.1	-0.4	13.1	6.5	-7.3	13.1
Manufacture of computer, electronic and optical products	C26	-4.6	8.0	2.8	-3.3	6.1	-4.3
Manufacture of electrical equipment	C27	-0.9	6.0	2.0	4.2	-3.9	4.9
Manufacture of machinery and equipment n.e.c.	C28	-3.0	0.0	-1.7	10.3	2.6	1.7
Manufacture of motor vehicles, trailers and semi-trailers	C29	-9.5	-7.0	9.5	-0.3	-9.4	-7.0
Manufacture of other transport equipment	C30	-1.3	-3.9	-7.2	52.1	-24.2	13.0
Manufacture of furniture	C31	0.4	-4.9	-1.1	8.3	-2.7	2.6
Other manufacturing	C32	-1.8	2.9	-2.9	-6.1	-9.1	30.5
Repair and installation of machinery and equipment	C33	-9.1	-0.9	-2.7	0.1	10.0	10.5
Electricity, gas, steam and air conditioning supply	D	6.0	-23.8	24.6	-17.0	24.7	-4.8
Electricity, gas, steam and air conditioning supply	D35	6.0	-23.8	24.6	-17.0	24.7	-4.8

¹ Seasonally adjusted.

* Preliminary data.

„..“ - Confidential data.

INDUSTRIAL PRODUCTION INDICES

IN OCTOBER 2024

Table 2

Changes of Industrial Production Indices compared to the same month of the previous year²

(Per cent)

Economic activities	NACE.BG - 2008	2024					
		V	VI	VII	VIII	IX	X*
Industry	B_TO_E36	-4.9	-4.9	-2.7	-2.9	1.2	-1.6
Mining and quarrying	B	-15.9	-16.9	-1.6	15.4	30.9	-10.0
Mining of coal and lignite	B05	-56.2	-24.0	-8.8	-27.1	-18.3	-53.5
Extraction of crude petroleum and natural gas	B06
Mining of metal ores	B07	-9.6	-19.7	-5.6	8.4	23.7	-5.8
Other mining and quarrying	B08	-9.8	-12.5	-0.1	-0.3	-2.0	-16.3
Mining support service activities	B09
Manufacturing	C	-6.5	-2.0	-3.9	-1.9	-1.6	-0.1
Manufacture of food products	C10	-6.9	6.0	2.6	2.7	-0.3	3.2
Manufacture of beverages	C11	-6.0	0.6	-1.9	-0.6	5.3	-4.2
Manufacture of tobacco products	C12	-5.1	-27.9	39.5	-19.7	2.5	23.8
Manufacture of textiles	C13	-11.5	-4.2	-7.8	-24.3	10.2	-5.7
Manufacture of wearing apparel	C14	-15.1	-15.3	-10.5	-9.2	-16.8	-11.0
Manufacture of leather and related products	C15	-26.6	-31.5	-22.9	-21.7	-31.1	-9.0
Manufacture of wood and of products of wood and cork, except furniture; manufacture of articles of straw and plaiting materials	C16	-6.4	-2.0	-0.8	0.0	10.0	0.6
Manufacture of paper and paper products	C17	1.5	-1.1	15.8	11.0	6.3	-1.0
Printing and reproduction of recorded media	C18	3.3	6.5	2.7	-1.0	3.9	2.2
Manufacture of coke and refined petroleum products	C19
Manufacture of chemicals and chemical products	C20	20.5	34.5	9.4	11.6	5.0	-10.5
Manufacture of basic pharmaceutical products and pharmaceutical preparations	C21	12.8	6.7	6.2	17.8	-6.0	7.5
Manufacture of rubber and plastic products	C22	-9.4	-2.8	-0.5	-0.3	-1.2	-5.8
Manufacture of other non-metallic mineral products	C23	-8.4	0.5	3.3	-5.6	-2.2	4.1
Manufacture of basic metals	C24	19.3	25.2	-2.9	-19.4	-14.9	-14.1
Manufacture of fabricated metal products, except machinery and equipment	C25	2.6	4.3	12.5	15.1	25.3	22.2
Manufacture of computer, electronic and optical products	C26	-25.1	-14.0	-5.6	-13.9	4.1	4.2
Manufacture of electrical equipment	C27	-22.0	-19.1	-15.0	-8.2	-8.1	3.4
Manufacture of machinery and equipment n.e.c.	C28	-20.8	-15.9	-17.4	-1.9	-4.3	3.2
Manufacture of motor vehicles, trailers and semi-trailers	C29	-12.7	-16.2	-2.1	-10.6	-14.3	-29.0
Manufacture of other transport equipment	C30	-29.4	-28.1	-41.2	-1.4	-23.0	9.8
Manufacture of furniture	C31	-3.8	-15.2	-8.5	5.2	4.5	12.8
Other manufacturing	C32	-24.6	-22.0	-25.8	-32.0	-28.4	-10.1
Repair and installation of machinery and equipment	C33	-3.9	-4.9	-0.1	-8.9	4.5	8.8
Electricity, gas, steam and air conditioning supply	D	18.4	-18.3	12.9	-10.3	13.3	7.9
Electricity, gas, steam and air conditioning supply	D35	18.4	-18.3	12.9	-10.3	13.3	7.9

² Calendar-adjusted.

* Preliminary data.

„..“ - Confidential data.

INDUSTRIAL PRODUCTION INDICES

IN OCTOBER 2024

Table 3

Industrial Production Indices (Seasonally adjusted, 2021 = 100)

NACE.BG - 2008	2023			2024									
	X	XI	XII	I	II	III	IV	V	VI	VII	VIII	IX	X*
B_TO_E36	103.4	98.8	102.9	99.1	99.5	98.5	101.6	99.1	99.2	99.8	100.7	102.0	101.3
B	95.0	90.6	100.3	88.7	80.2	81.8	84.8	76.0	77.2	83.8	102.4	112.0	86.4
B05	64.7	58.6	69.1	51.7	34.7	47.1	47.0	38.7	46.7	58.8	48.4	42.6	18.9
B06
B07	112.7	112.0	114.8	110.3	104.6	101.9	106.4	101.2	100.0	99.6	111.2	118.3	109.3
B08	100.2	86.8	90.1	88.3	105.9	97.3	99.0	89.5	87.6	88.6	87.8	81.6	84.2
B09
C	108.2	104.7	106.6	103.4	106.6	105.2	105.9	103.0	105.6	104.9	106.9	105.9	107.3
C10	105.8	102.6	102.9	106.5	104.6	103.6	105.8	98.3	103.0	103.6	103.7	103.1	108.3
C11	105.6	111.7	106.0	110.8	111.2	103.4	112.8	102.4	106.9	106.0	105.4	109.2	102.8
C12	57.8	63.8	67.4	54.9	66.0	79.0	79.2	70.5	59.9	69.6	78.7	80.6	72.1
C13	65.0	71.2	65.4	62.5	66.4	61.8	62.1	63.9	66.1	62.5	58.0	72.3	61.8
C14	101.2	97.7	99.1	93.7	92.0	88.7	87.8	88.9	91.6	90.2	88.4	87.8	89.6
C15	76.0	85.0	78.4	66.1	70.0	63.7	67.5	66.1	62.7	61.9	62.7	59.3	66.9
C16	90.3	88.2	84.6	96.7	102.6	96.5	91.1	88.7	88.7	87.6	86.2	92.4	90.5
C17	94.6	95.7	90.0	90.2	92.3	89.3	95.7	93.4	94.2	99.9	91.5	97.6	94.0
C18	90.0	91.7	107.3	97.8	95.0	94.8	95.9	93.5	98.6	91.4	87.8	94.6	92.3
C19
C20	111.3	91.7	96.5	97.3	100.1	99.1	107.6	108.5	117.1	100.8	109.7	103.7	99.9
C21	115.1	105.4	94.3	113.4	125.5	126.3	116.1	117.7	115.2	114.3	125.7	108.6	122.0
C22	86.1	87.0	86.6	80.8	79.9	81.9	85.2	82.5	84.4	84.1	83.8	84.8	81.6
C23	87.4	84.0	102.8	88.9	101.9	94.3	97.6	86.1	90.0	94.5	85.8	86.5	90.9
C24	108.9	106.6	104.9	105.7	114.9	114.6	118.8	118.1	122.0	100.3	92.9	100.1	94.5
C25	152.1	138.9	133.5	154.4	147.7	143.7	153.6	145.8	145.2	164.3	175.0	162.1	183.3
C26	98.6	96.0	93.7	105.7	125.2	99.7	99.2	94.7	102.2	105.1	101.6	107.8	103.2
C27	101.6	98.7	104.4	97.2	107.9	101.3	92.2	91.3	96.8	98.8	103.0	98.9	103.8
C28	95.1	93.0	98.1	86.0	92.8	90.7	88.0	85.3	85.4	83.9	92.6	95.0	96.6
C29	135.1	119.0	109.5	125.9	120.7	112.1	126.8	114.8	106.7	116.9	116.5	105.5	98.1
C30	106.9	92.5	103.5	77.7	85.4	100.8	99.4	98.2	94.4	87.5	133.1	100.9	114.0
C31	72.8	75.7	87.2	81.9	81.4	84.3	79.7	80.0	76.1	75.3	81.5	79.4	81.5
C32	146.2	126.4	140.4	137.4	123.2	119.8	119.0	116.8	120.2	116.8	109.7	99.7	130.1
C33	125.2	117.0	124.0	117.7	111.7	103.8	126.2	114.8	113.7	110.6	110.8	121.9	134.6
D	78.8	77.9	87.6	83.3	80.6	75.5	85.6	90.7	69.2	86.2	71.5	89.2	84.9
D35	78.8	77.9	87.6	83.3	80.6	75.5	85.6	90.7	69.2	86.2	71.5	89.2	84.9

* Preliminary data.

„..” - Confidential data.

INDUSTRIAL PRODUCTION INDICES

IN OCTOBER 2024

Table 4

Industrial Production Indices (Calendar-adjusted, 2021 = 100)

NACE.BG - 2008	2023			2024									
	X	XI	XII	I	II	III	IV	V	VI	VII	VIII	IX	X*
B_TO_E36	107.6	102.4	105.8	93.9	94.0	101.8	98.8	94.8	101.3	103.1	98.6	102.7	105.8
B	106.3	97.3	110.4	86.5	76.4	79.7	78.3	70.8	74.1	80.8	101.3	119.5	95.7
B05	87.9	75.1	88.7	67.8	37.1	40.2	25.9	17.5	24.2	51.3	44.0	48.8	40.9
B06
B07	116.4	115.0	129.4	111.0	99.4	97.6	109.8	96.7	97.2	87.6	115.5	137.9	109.7
B08	113.5	96.1	91.1	63.7	85.4	93.8	96.7	92.4	93.7	92.4	90.9	86.0	95.0
B09
C	115.4	107.9	103.9	93.7	98.6	108.5	105.7	102.0	111.4	108.7	103.6	107.0	115.3
C10	115.8	106.1	106.7	97.6	92.4	104.5	102.6	97.2	103.9	103.2	104.8	106.7	119.6
C11	99.1	103.4	98.4	80.8	80.9	96.5	109.8	103.9	127.7	131.0	129.8	120.3	94.9
C12	60.9	62.2	62.8	32.8	43.8	80.0	85.4	80.9	72.5	87.8	84.7	90.1	75.5
C13	68.4	76.3	60.3	57.8	67.0	66.0	60.5	67.4	71.4	63.0	47.3	73.6	64.5
C14	103.5	97.5	95.9	98.1	92.2	89.7	79.1	81.9	98.0	102.0	82.5	87.0	92.1
C15	80.9	95.4	72.7	64.7	67.8	68.5	64.4	62.0	66.9	68.0	50.8	58.2	73.6
C16	96.2	93.7	78.9	81.8	91.5	98.0	91.7	92.8	93.3	93.6	83.5	95.4	96.8
C17	100.8	99.7	84.0	88.3	88.1	93.1	93.2	93.4	97.9	103.2	85.9	96.7	99.8
C18	96.4	103.4	113.9	87.9	86.6	96.6	94.2	93.4	101.9	90.8	81.1	91.3	98.5
C19
C20	112.4	93.6	95.6	91.7	94.9	108.6	109.4	107.6	120.8	101.5	104.6	102.3	100.5
C21	120.1	110.4	98.1	109.4	116.3	139.0	115.8	115.8	123.5	111.2	114.6	100.4	129.1
C22	95.0	87.7	77.7	74.4	75.6	85.9	84.4	82.7	88.7	87.9	79.0	87.6	89.5
C23	97.3	90.1	92.4	64.3	85.1	93.3	99.9	91.0	95.3	102.8	89.8	91.9	101.2
C24	113.6	108.8	102.1	107.5	112.2	122.7	119.3	119.5	123.3	97.3	83.1	95.6	97.6
C25	158.8	152.6	139.9	120.7	132.3	144.3	156.8	142.0	152.8	176.9	173.4	162.4	194.0
C26	110.4	99.4	88.5	101.4	122.2	102.6	97.8	92.2	107.3	109.0	89.8	108.5	115.0
C27	106.8	103.6	94.6	90.5	108.6	107.4	89.6	85.7	104.9	103.2	96.1	101.2	110.4
C28	101.5	98.3	93.6	77.3	89.6	96.3	90.0	84.2	90.9	87.4	81.5	96.7	104.7
C29	148.8	131.8	99.4	127.3	122.9	119.2	125.0	110.8	108.4	107.9	103.6	107.9	105.7
C30	112.4	93.4	88.3	61.2	80.4	113.2	104.1	99.7	104.3	89.0	130.0	97.0	123.5
C31	77.7	80.5	87.5	72.2	75.1	87.2	78.2	79.0	81.2	77.9	77.7	80.4	87.6
C32	160.3	135.0	127.8	120.0	108.1	121.2	115.3	114.4	137.5	117.7	110.0	103.7	144.1
C33	130.1	128.3	165.1	86.2	95.7	104.3	114.9	108.9	116.9	112.0	107.8	128.1	141.5
D	68.8	77.6	114.9	101.0	81.5	81.5	72.0	70.0	64.1	91.9	76.2	77.3	74.2
D35	68.8	77.6	114.9	101.0	81.5	81.5	72.0	70.0	64.1	91.9	76.2	77.3	74.2

* Preliminary data.

„..“ - Confidential data.